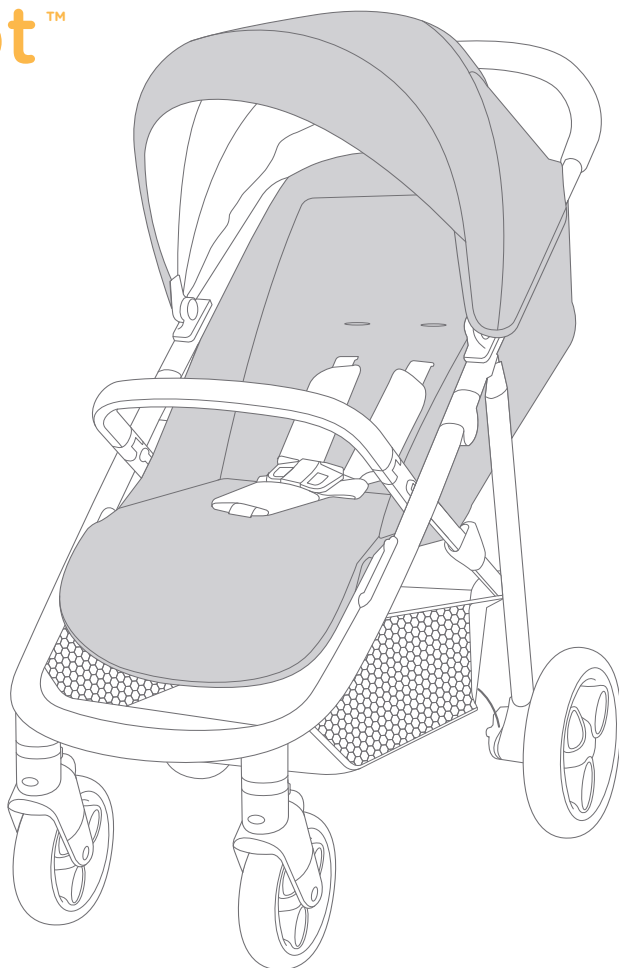


**bright**  
by **Joie™**

**eucalypt™**

stroller

instruction manual

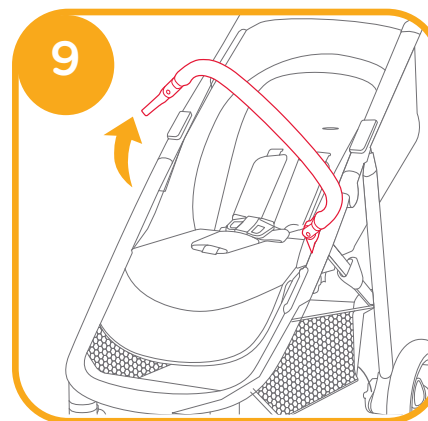
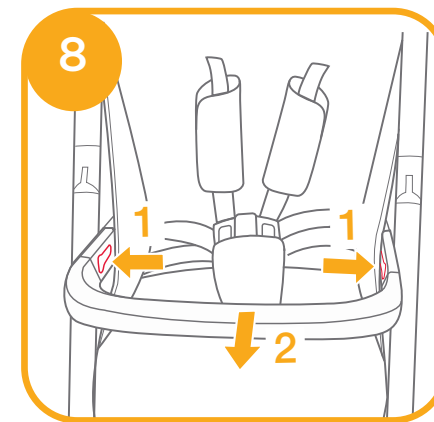
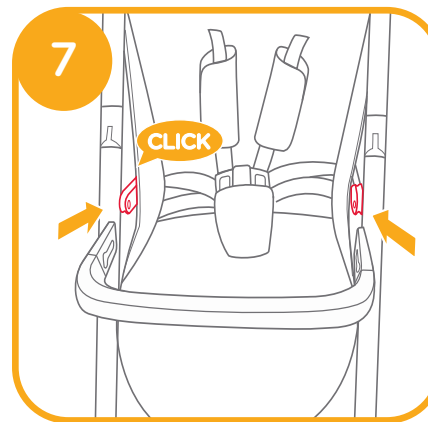
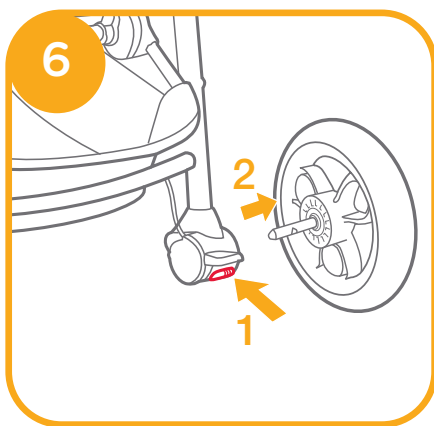
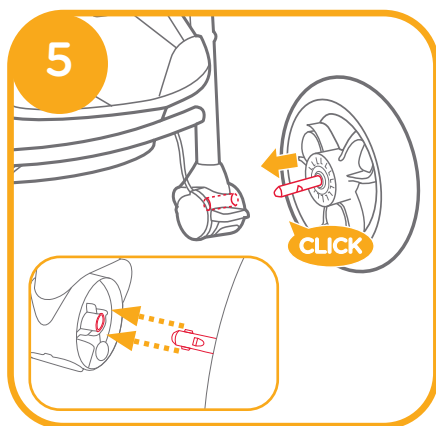
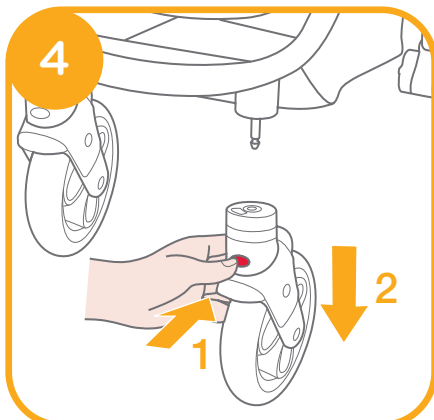
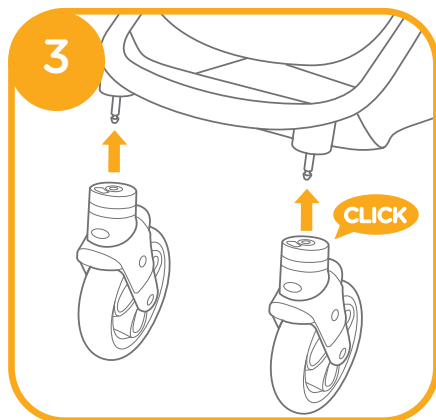
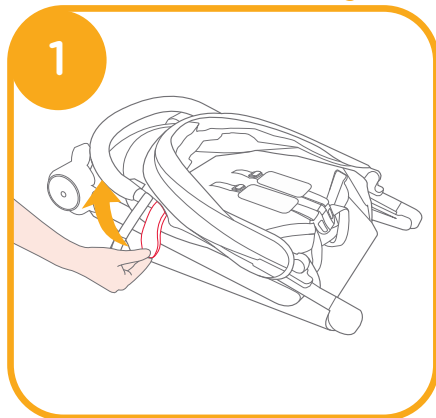


**IMPORTANT: KEEP THIS INSTRUCTION BOOKLET  
IN THE PLACE PROVIDED AT THE BACK OF THE  
CHILD RESTRAINT**

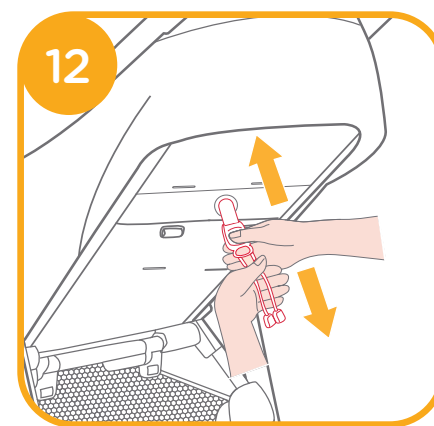
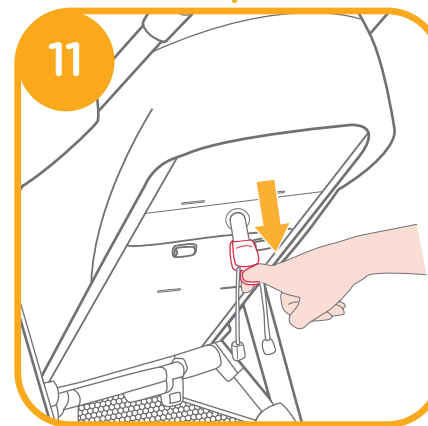
**Keep these Instructions for future reference**

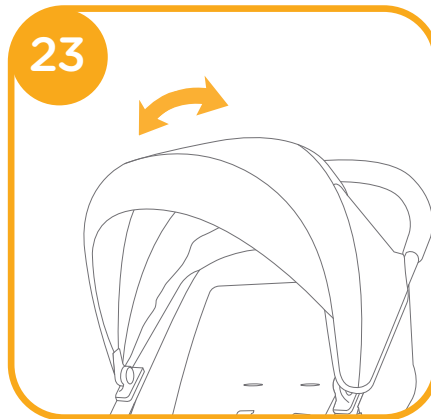
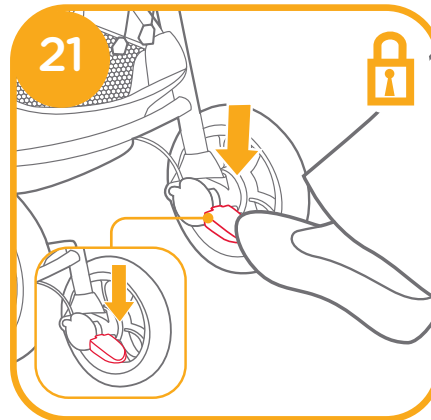
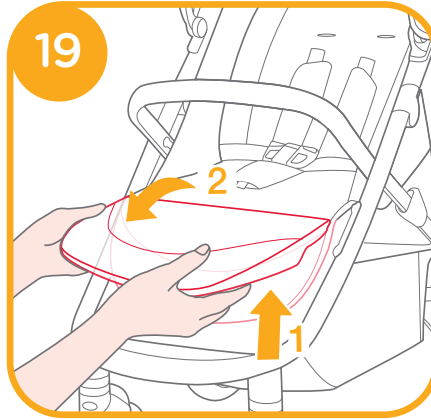
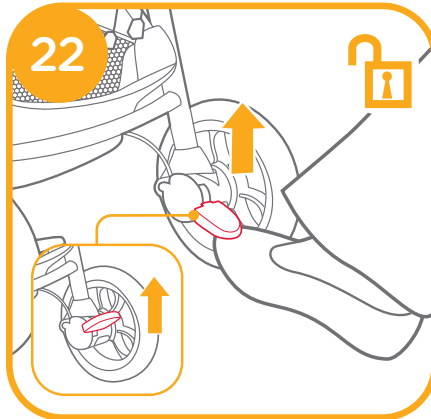
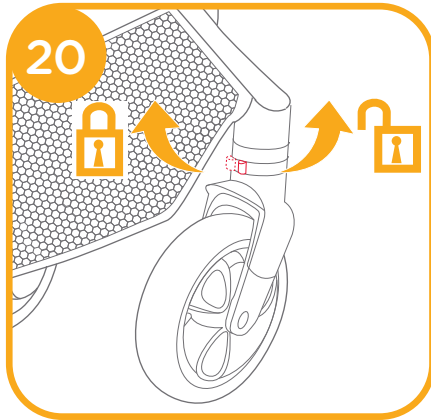
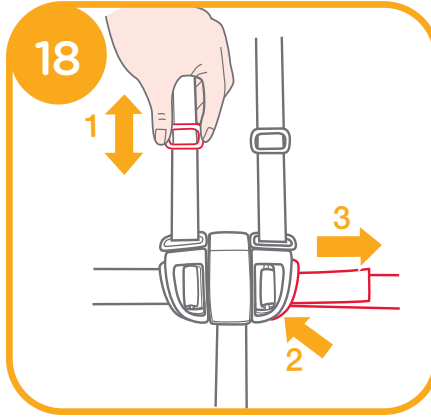
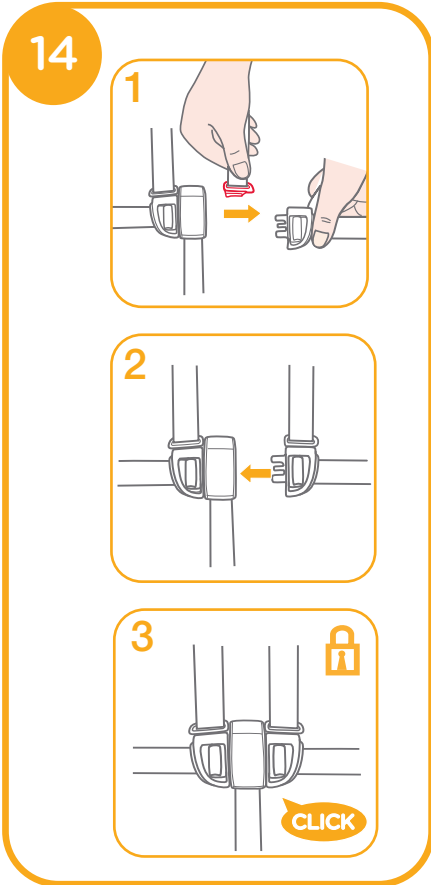
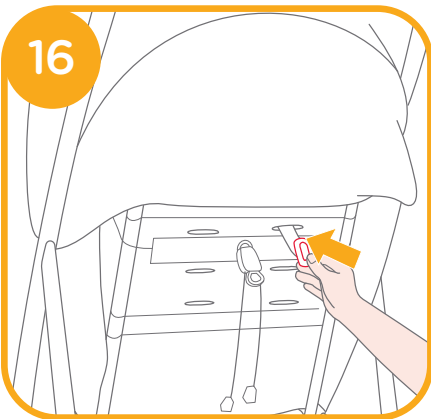
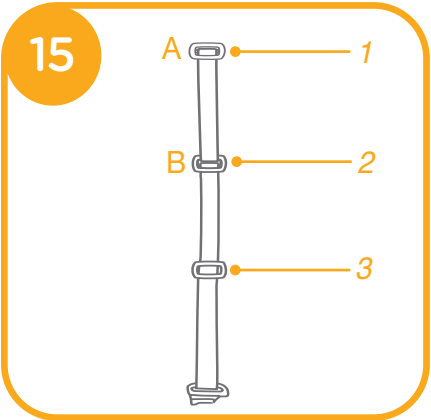
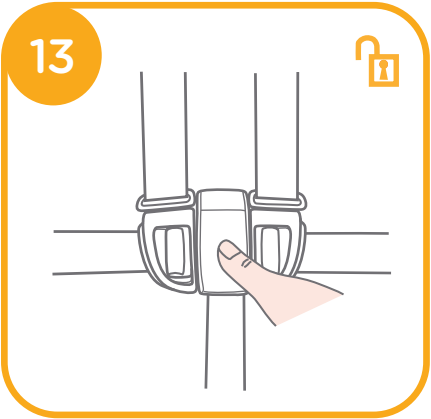
# IMPORTANT - READ CAREFULLY AND KEEP FOR FUTURE REFERENCE.

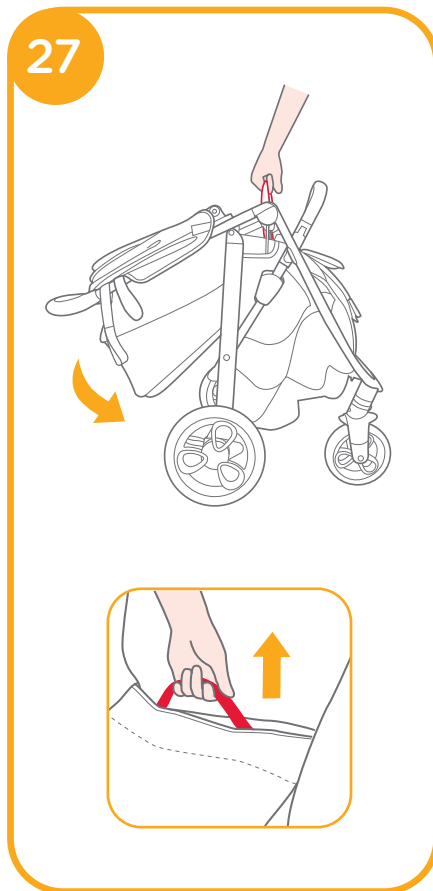
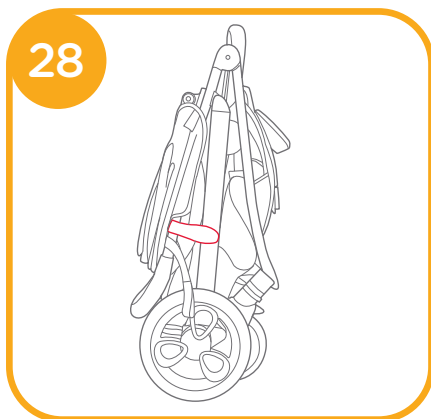
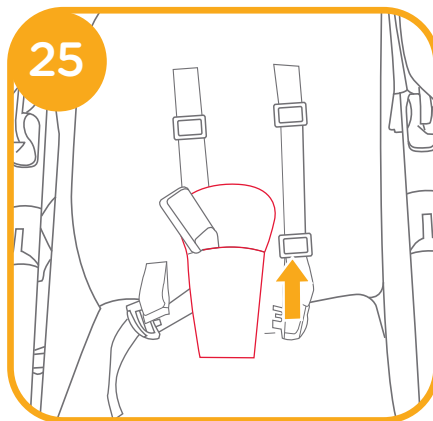
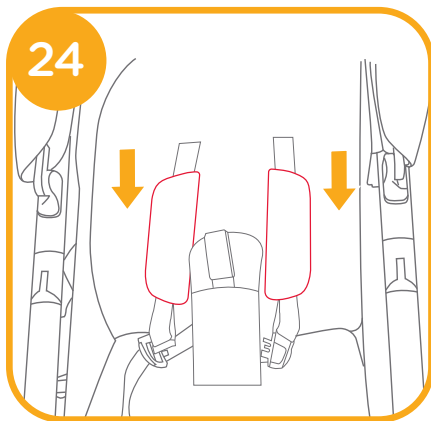
## Stroller Assembly



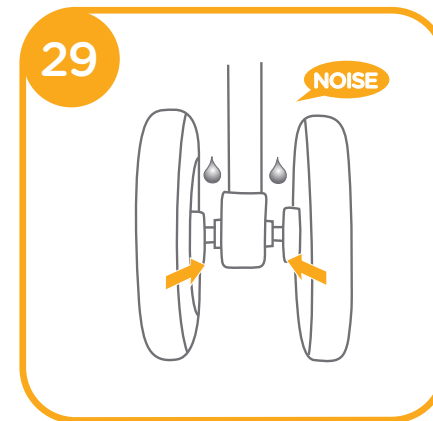
## Stroller Operation







## Care and Maintenance



Congratulations on becoming part of the Joie family! We are so excited to be part of your journey with your little one. While traveling with the Bright by Joie eucalypt, you are using a high quality, fully certified stroller, complies with Australian Trade Practices Act 1974 Consumer Protection Notice No 8 of 2007. This product is suitable for children up to 22kg or 4 years whichever comes first. Please carefully read this manual and follow each step to ensure a comfortable ride and best protection for your child.

## IMPORTANT - READ CAREFULLY AND KEEP FOR FUTURE REFERENCE.

Visit us at [joiebaby.com](http://joiebaby.com) to download manuals and see more exciting Joie products!

For warranty information, please visit our website at [joiebaby.com](http://joiebaby.com)

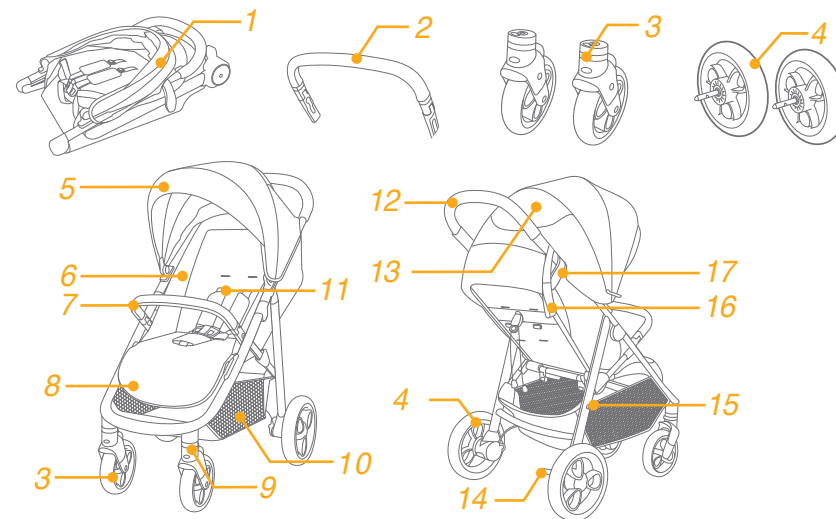
## Emergency

In case of emergency or accident, it is most important to have your child taken care of with first aid and medical treatment immediately.

## Parts List

Make sure all parts are available before assembly. If any part is missing, please contact local retailer. No tools are required for assembly.

- |                  |                   |                     |                  |
|------------------|-------------------|---------------------|------------------|
| 1 Stroller Frame | 6 Seat Pad        | 11 Shoulder Harness | 16 Tether Strap  |
| 2 Armbar         | 7 Armbar          | 12 Handle           | 17 Storage Latch |
| 3 Front Wheels   | 8 Calf Support    | 13 Window           |                  |
| 4 Rear Wheels    | 9 Swivel Lock     | 14 Brake Lever      |                  |
| 5 Canopy         | 10 Storage Basket | 15 Storage Mount    |                  |



## WARNING

- ! FOLLOW THE MANUFACTURER'S INSTRUCTIONS.
- ! PUT ON ALL THE BRAKES WHENEVER YOU PARK THE STROLLER.
- ! DO NOT LEAVE CHILDREN UNATTENDED.
- ! DO NOT CARRY EXTRA CHILDREN OR BAGS ON THIS STROLLER.
- ! MAKE SURE CHILDREN ARE CLEAR OF ANY MOVING PARTS IF YOU ADJUST THE STROLLER, OTHERWISE THEY MAY BE INJURED.
- ! TO AVOID INJURY OR DEATH: ALWAYS APPLY THE BRAKES WHENEVER THE STROLLER IS STATIONARY.
- ! ALWAYS KEEP CHILD IN VIEW WHILE IN STROLLER.
- ! ALWAYS USE THE CROTCH COMBINATION WITH THE WAIST AND SHOULDER HARNESSSES.
- ! TO AVOID SERIOUS INJURY FROM FALLING OR SLIDING OUT, ALWAYS USE SEAT BELT.
- ! USE THIS STRAP TO STOP THE STROLLER ROLLING AWAY.
- ! ENSURE THAT ALL THE LOCKING DEVICES ARE ENGAGED BEFORE USE.
- ! DO NOT LET YOUR CHILD PLAY WITH THIS PRODUCT.
- ! NEVER LEAVE THE HARNESS BUCKLED WHEN NOT FITTED TO A CHILD IN THE STROLLER BECAUSE THE HARNESS CAN FORM LOOPS WHICH MAY POSE A STRANGULATION HAZARD.
- ! THE USE OF ACCESSORIES NOT APPROVED BY THE VEHICLE MANUFACTURER IS UNSAFE.
- ! ADULT ASSEMBLY REQUIRED.

- ! USE THE STROLLER WITH A CHILD WEIGHING LESS THAN 22KG. IT WILL CAUSE DAMAGE TO THE STROLLER WITH AN UNFITTED CHILD.
- ! TO PREVENT A HAZARDOUS, UNSTABLE CONDITION, DO NOT PLACE MORE THAN 4.5KG IN THE STORAGE BASKET.
- ! THE STROLLER IS NOT BE USED NEAR AN OPEN FIRE OR EXPOSED FLAME.
- ! USE THE STROLLER WITH ONLY ONE CHILD AT A TIME. NEVER PLACE PURSES, SHOPPING BAGS, PARCELS OR ACCESSORY ITEMS ON THE HANDLE OR HOOD.
- ! OVERLOADING, FOLDING INCORRECTLY, OR USING COMPONENT PARTS FROM OTHER MANUFACTURERS MAY CAUSE THE STROLLER TO BE DAMAGED, BROKEN OR UNSAFE.
- ! PLEASE READ ALL THE INSTRUCTIONS IN THE MANUAL BEFORE USING THE PRODUCT. PLEASE SAVE INSTRUCTION MANUAL FOR FUTURE USE. FAILURE TO FOLLOW THESE WARNINGS AND INSTRUCTIONS MAY RESULT IN SERIOUS INJURY OR DEATH.
- ! CHILD MAY SLIP INTO LEG OPENINGS AND BE STRANGLED IF THE HARNESS IS NOT USED.
- ! CARE SHOULD BE TAKEN IF THE STROLLER IS USED ON STAIRS OR ESCALATORS.
- ! KEEP AWAY FROM HIGH TEMPERATURE OBJECTS, LIQUIDS, AND ELECTRONICS.
- ! NEVER ALLOW YOUR CHILD TO STAND ON THE STROLLER OR SIT IN THE STROLLER WITH HEAD TOWARD FRONT OF STROLLER .
- ! NEVER PLACE THE STROLLER ON ROADS, SLOPES OR DANGEROUS AREAS.

- ! DO MAKE SURE ALL MECHANISMS ARE FIXED BEFORE USING THE STROLLER.
- ! TO AVOID STRANGULATION, DO NOT PLACE ITEMS WITH A STRING AROUND YOUR CHILD'S NECK, SUSPEND STRINGS FROM THIS PRODUCT, OR ATTACH STRINGS TO TOYS.
- ! DO NOT LIFT STROLLER WHILE CHILD IS IN STROLLER.
- ! DO NOT USE STORAGE BASKET AS A CHILD CARRIER.
- ! TO PREVENT TIPPING, NEVER LET CHILD CLIMB THE STROLLER . ALWAYS LIFT THE CHILD IN AND OUT OF THE STROLLER.
- ! TO AVOID FINGER ENTRAPMENT, USE CARE WHEN FOLDING AND UNFOLDING THE STROLLER.
- ! PLEASE KEEP THE STORAGE LATCH LOCKING CORRECTLY WHEN LIFT AND MOVE THE UNIT. PLEASE TRANSPORT THE FOLDED STROLLER SAFELY.
- ! TO ENSURE YOUR CHILD'S SAFETY, PLEASE MAKE SURE ALL PARTS ARE ASSEMBLED AND FASTENED PROPERLY BEFORE USING THE STROLLER .
- ! TO AVOID STRANGULATION, DO MAKE SURE YOUR CHILD IS CLEAR FROM THE CANOPY.
- ! THE VEHICLE IS DESIGNED FOR USE ON FLAT OR GENTLY SLOPING SURFACES AND MAY BE UNSTABLE ON HIGHER SLOPING AND UNEVEN SURFACES; RESULTING IN THE POSSIBILITY OF THE VEHICLE TIPPING OVER.
- ! DISCONTINUE USING STROLLER IF IT IS DAMAGED OR BROKEN.
- ! THIS PRODUCT IS NOT SUITABLE FOR RUNNING OR SKATING. STROLLER TO BE USED ONLY AT WALKING SPEED. THIS PRODUCT IS NOT INTENDED FOR USE WHILE JOGGING.

- ! TO AVOID SUFFOCATION, REMOVE PLASTIC BAG AND PACKAGING MATERIALS BEFORE USING THIS PRODUCT. THE PLASTIC BAG AND PACKAGING MATERIALS SHOULD THEN BE KEPT AWAY FROM BABIES AND CHILDREN.
- ! STROLLER DESIGNED TO BE USED FROM BIRTH SHALL RECOMMEND THE USE OF THE MOST RECLINED POSITION FOR NEW BORN BABIES.
- ! THE BRAKES MUST ALWAYS BE APPLIED WHEN THE STROLLER IS NOT MOVING.
- ! EXTRA CARE IS NEEDED IF USED ON MOVING VEHICLES AND CHILD SHOULD NOT BE LEFT UNATTENDED, EVEN WITH BRAKES ENGAGED.
- ! USE THIS HARNESS AT ALL TIMES.
- ! SECURE THE CHILD IN THE HARNESS AT ALL TIMES.
- ! DO NOT ATTACH ITEMS TO THE HANDLE, SEAT BACK OR SIDES OF THE STROLLER. ANY ADDITIONAL LOAD WILL AFFECT THE STABILITY OF THE STROLLER AND COULD CAUSE THE STROLLER TO TIP.
- ! WARNING TO AVOID SERIOUS INJURY, MAKE SURE THE CANOPY IS ASSEMBLED WHEN BACKREST IS IN THE MOST RECLINED POSITION.
- ! WARNING: DO NOT USE FOR UNSUPERVISED SLEEPING.
- ! THE VEHICLE IS NOT TO BE USED AS AN UNSUPERVISED SLEEPING ENVIRONMENT.
- ! DO NOT USE THIS BASSINET ONCE THE CHILD CAN SIT UP UNAIDED.



# Stroller Assembly

Please read all the instructions in this manual before assembling and using this product.

## Open Stroller

see images 1 - 2

Separate storage latch from storage mount 1, and then lift the handle upwards 2, a click sound means the stroller is open completely.

! Check that the stroller is completely latched before continuing to use.

## Assemble & Detach Front Wheel

see images 3 - 4

## Assemble & Detach Rear Wheels

see images 5 - 6

## Assemble & Detach Armbar

see images 7 - 9

The completely assembled stroller is shown as 10

# Stroller Operation

## Adjust Backrest

see images 11 - 12

Recline Backrest

Pull tab to recline backrest. 11

! Hold the backrest with the other hand if a child is already seated in the stroller.

Raise Backrest

Hold both left and right strings and push up the angle adjuster to raise backrest. 12

! Make sure the recline is set properly for use.

## Use Buckle

see images 13 - 14

Release Buckle

Press the center button to release the buckle. 13

Lock Buckle

Match the waist belt buckle with the shoulder buckle 14 - 1, and click into the center buckle. 14 - 2 A "click" sound means the buckle is locked completely. 14 - 3

! To avoid serious injury from falling or sliding out, always secure your child with harness.

! Make sure your child is snugly secured. The space between the child and the shoulder harness is about the thickness of one hand.

! Do not cross the shoulder belts. This will cause pressure on a child's neck.

## Use Shoulder & Waist Harnesses

see images 15 - 18

! In order to protect your child from falling out, after your child is placed into the seat, check whether the shoulder and waist harnesses are at proper height and length.

15 - 1 Shoulder harness anchor A

15 - 2 Shoulder harness anchor B

15 - 3 Slide adjuster

For larger child, use shoulder harness anchor A and the highest shoulder slots. For smaller child, use shoulder harness anchor B and the lowest shoulder slots.

To adjust the position of the shoulder harness anchor, turn the anchor to be level with the side facing forward. Thread it through the shoulder harness slot from back to front. 16

Rethread it through the slot that is closest to child's shoulder height. 17

Use slide adjuster to change the harness length. 18 - 1

Press the button 18 - 2, while pulling the waist harness to proper length. 18 - 3

## Adjust Calf Support

see image 19

The calf support has 2 positions.

To raise the calf support, push it upwards. A "click" sound means the calf is locked completely.



To lower calf support, press the adjustment buttons on both sides of the calf support <sup>19</sup> - 1, and rotate the calf support downwards. <sup>19</sup> - 2

## Use Front Swivel Lock see image <sup>20</sup>

Front wheel locked or unlocked status as <sup>20</sup>

**Tip** It is recommended to use swivel locks on uneven surfaces.

## Use Brake see images <sup>21</sup> - <sup>22</sup>

To lock the rear wheels, step down on the brake lever. <sup>21</sup>

To release wheels, just lift the brake lever upwards. <sup>22</sup>

**Tip** Always set the parking brake when stroller is not moving.

## Use Canopy see image <sup>23</sup>

The canopy can be opened or folded, pull it toward front or back. <sup>23</sup>

## Use Shoulder Harness Cover and Crotch Harness Cover see images <sup>24</sup> - <sup>25</sup>

The shoulder harness cover or crotch harness cover can be removed from the webbing. To assemble shoulder harness cover and crotch harness cover in reverse steps.

## Fold Stroller see images <sup>26</sup> - <sup>28</sup>

! Please fold the canopy before folding the stroller.

1. Press the folding button. <sup>26</sup>
2. Pull the folding webbing upward, the frame will automatically fold backward. <sup>27</sup>
3. The storage latch will automatically hook onto the storage mount, then the stroller is folded and locked completely. The stroller can stand when folded. <sup>28</sup>

## Care and Maintenance

- ! Removable seat pad may be washed in cold water and drip-dried. No bleach.
- ! To clean stroller frame, use only household soap and warm water. No bleach or detergent.
- ! From time to time, check your stroller for loose screws, worn parts, torn material or stitching. Replace or repair the parts as needed.
- ! Excessive exposure to sun or heat could cause fading or warping of parts.
- ! If stroller becomes wet, open canopy and allow to dry thoroughly before storing.
- ! If wheels squeak, use a light oil (e.g., Silicon Spray, antirust oil, or sewing machine oil). It is important to get the oil into the axle and wheel assembly. <sup>29</sup>
- ! When using your stroller at the beach, completely clean your stroller after use to remove sand and salt from mechanisms and wheel assemblies.



Distributed by Allison AU Pty Ltd

ACN: 642 240 140

Unit 1, 35 Lyn Parade

Prestons

NSW Australia 2170

For after-sales & warranty service, contact:

1800 951 070

[customerservice@allisonau.com.au](mailto:customerservice@allisonau.com.au)