

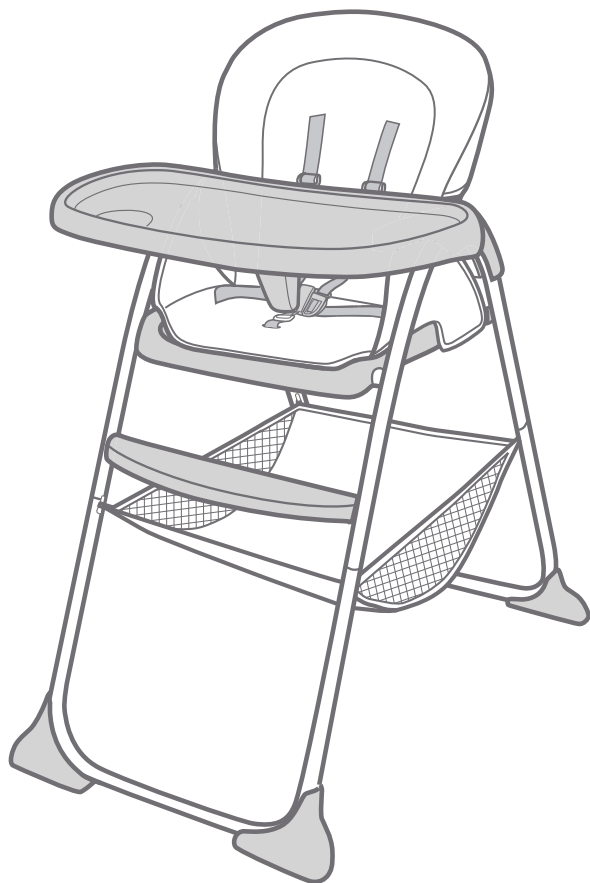
Joie™

6-36 months

# mimzy™ snacker

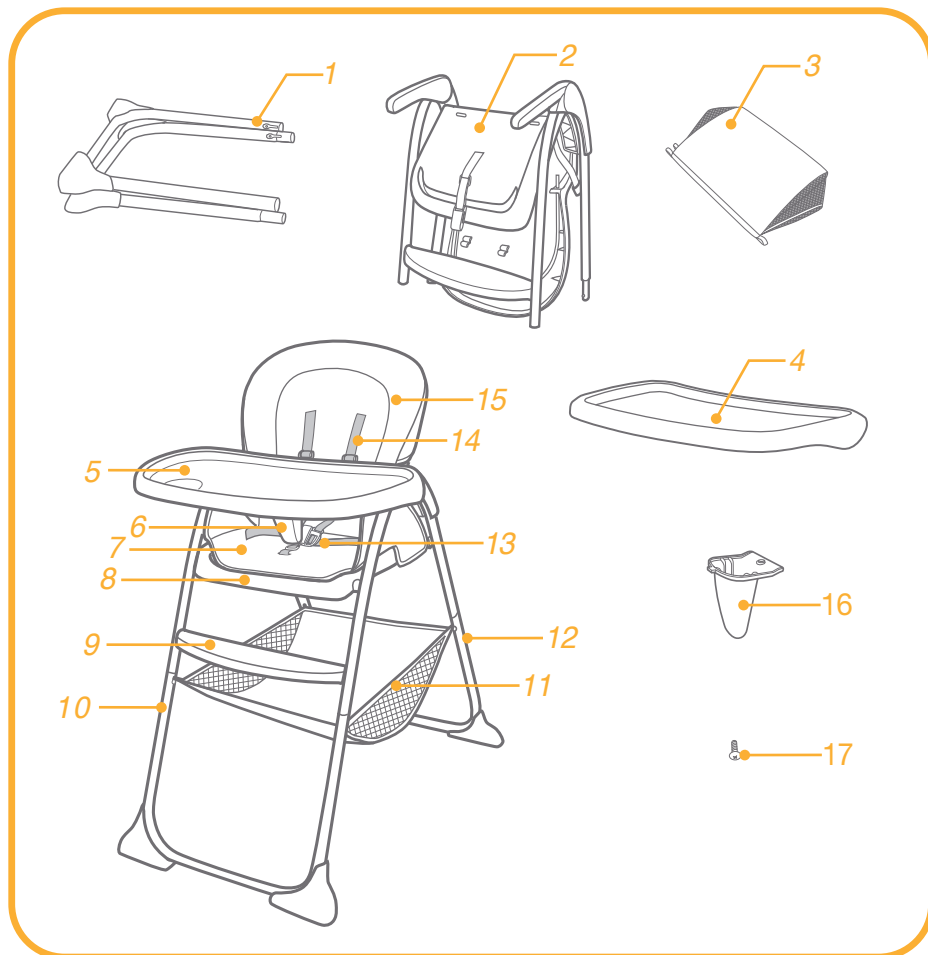
## highchair

GB Instruction Manual

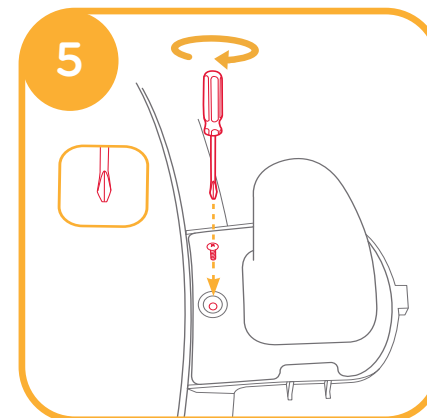
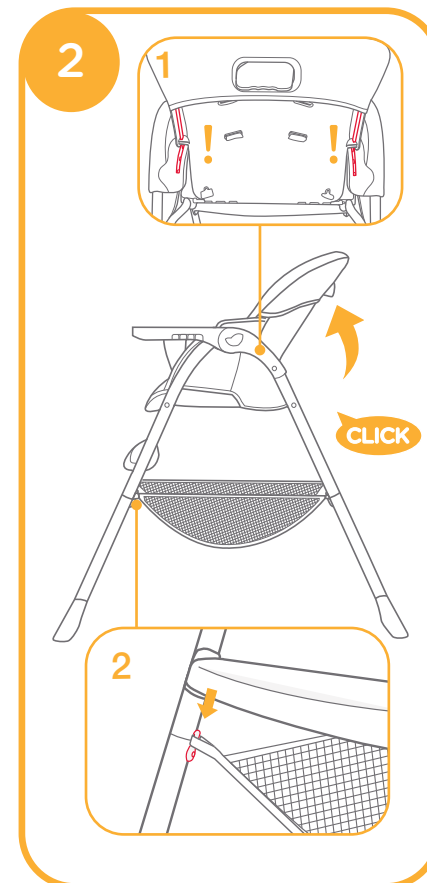
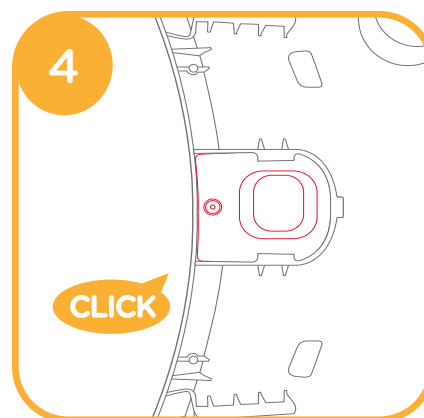
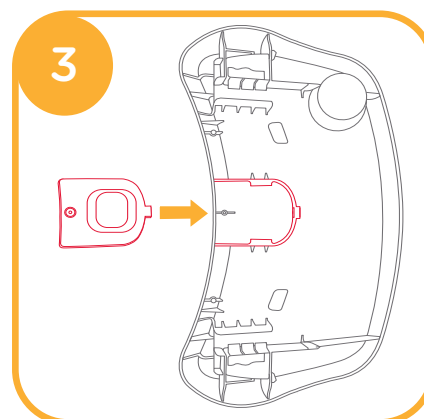
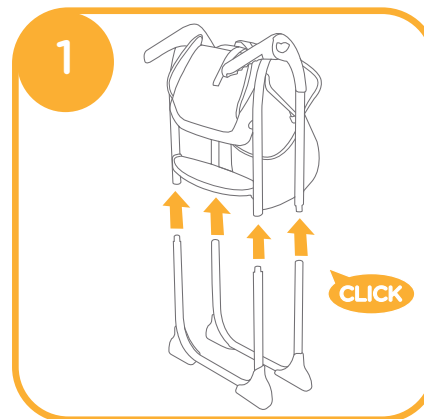


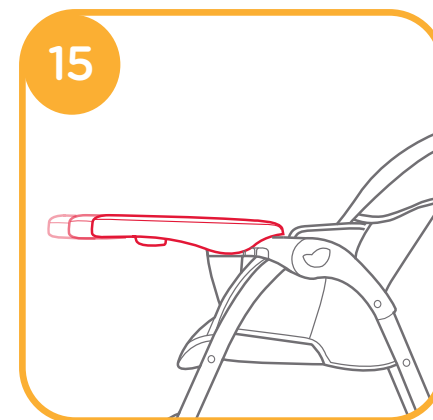
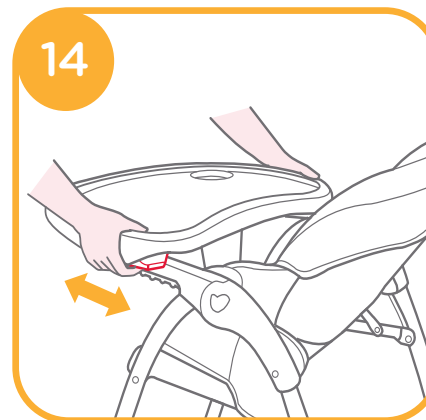
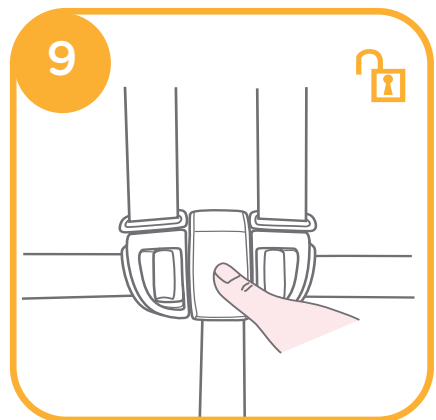
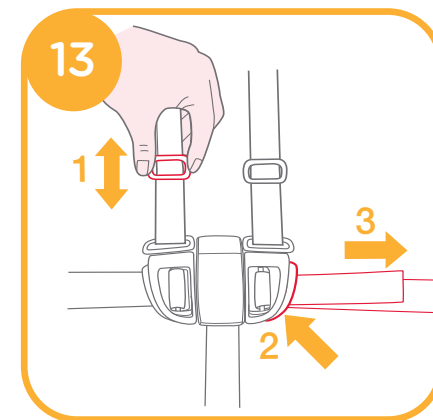
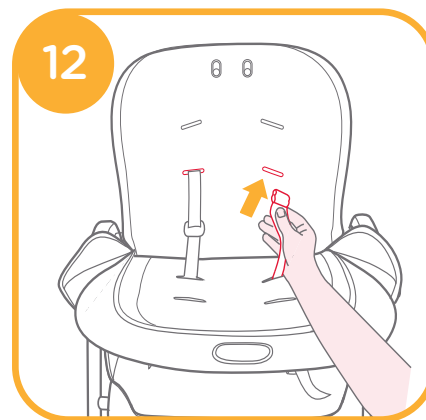
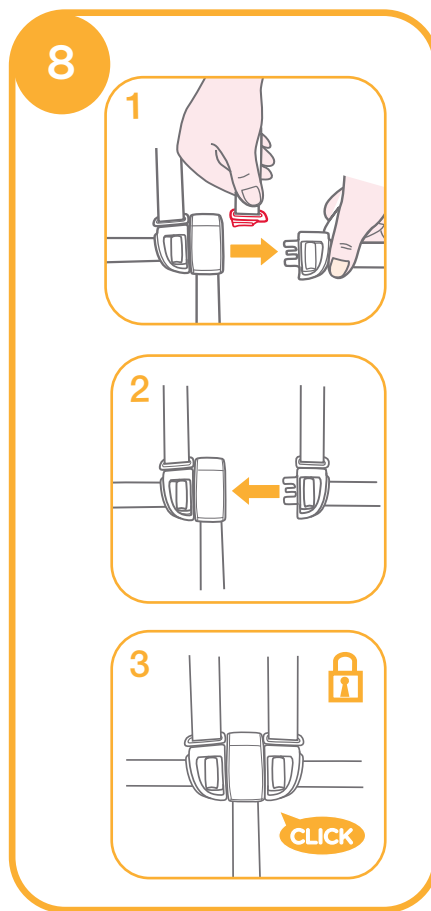
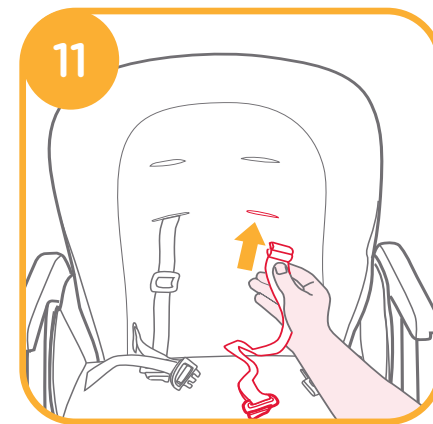
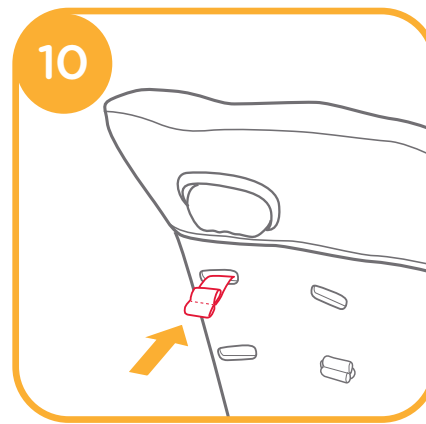
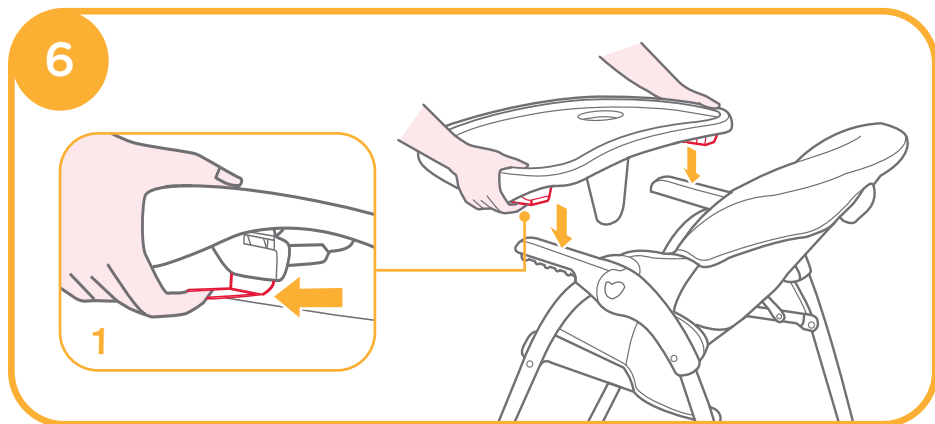
**IMPORTANT! READ CAREFULLY AND  
KEEP FOR FUTURE REFERENCE**

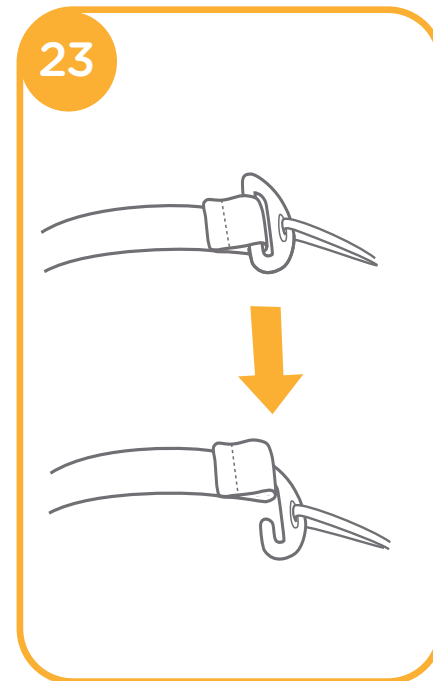
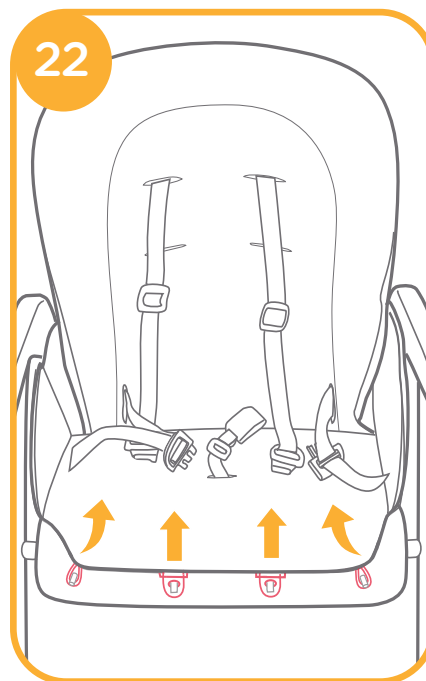
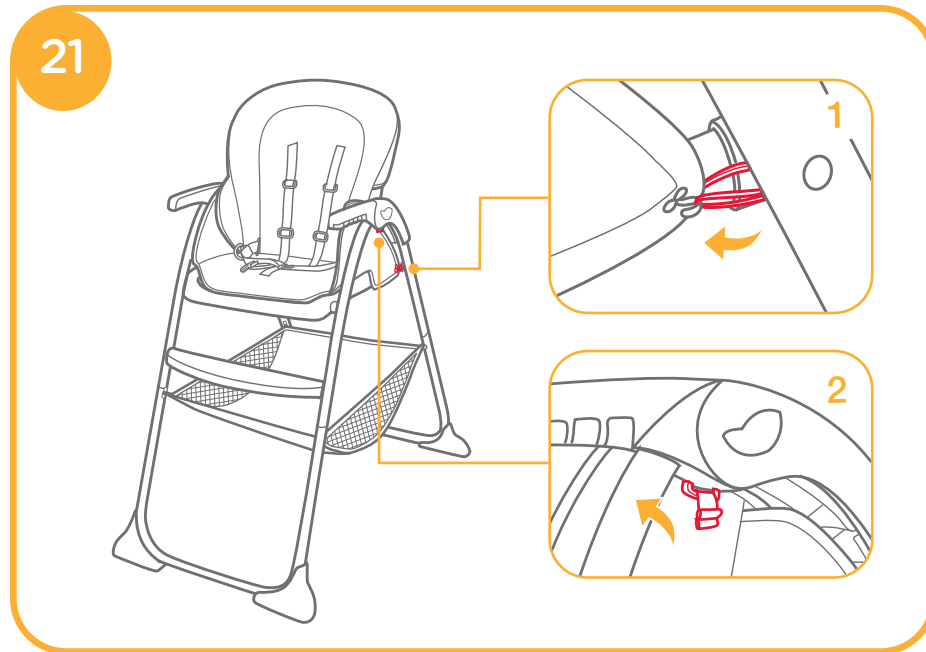
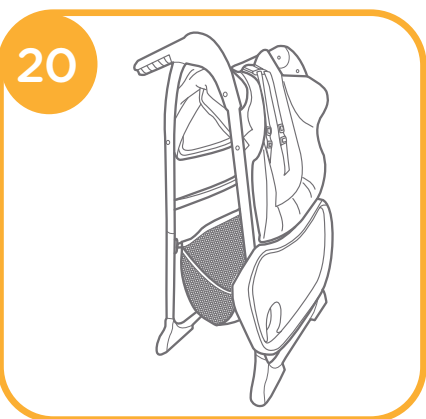
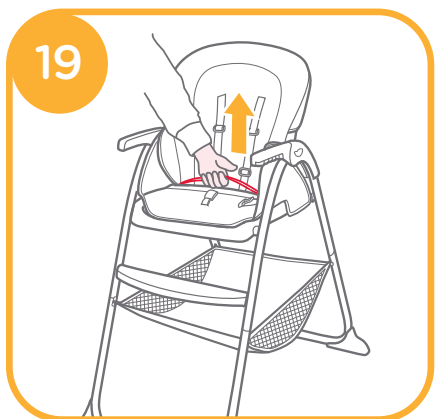
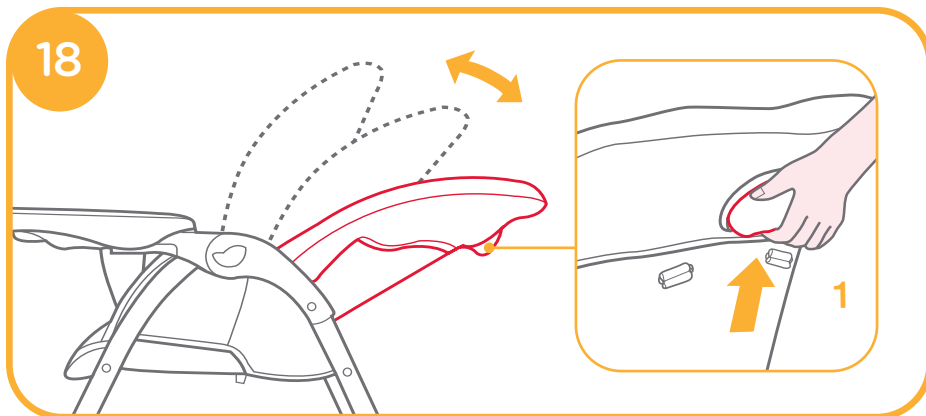
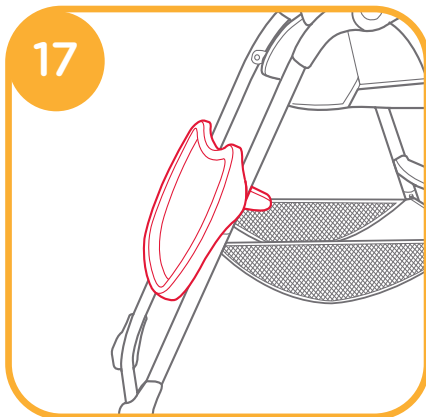
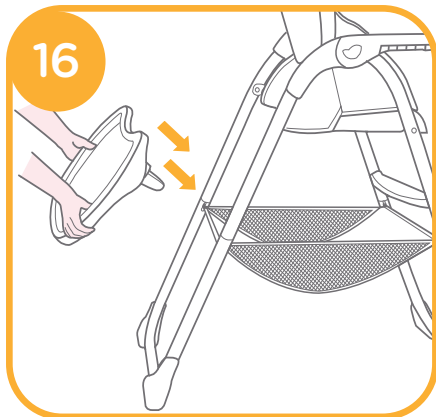
## Parts List



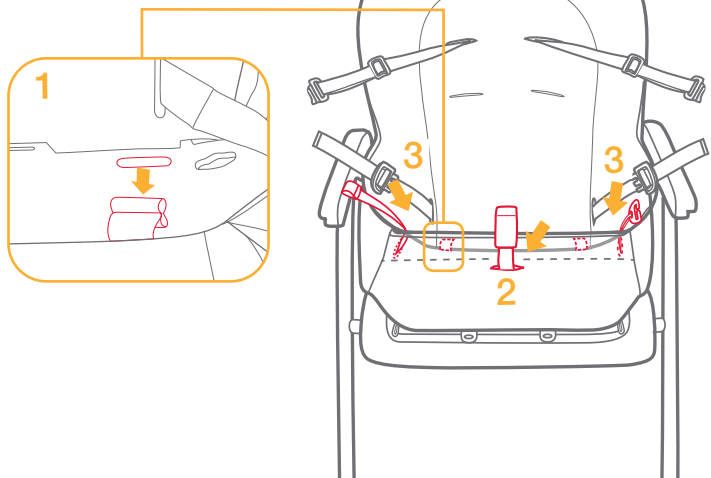
## Highchair Assembly



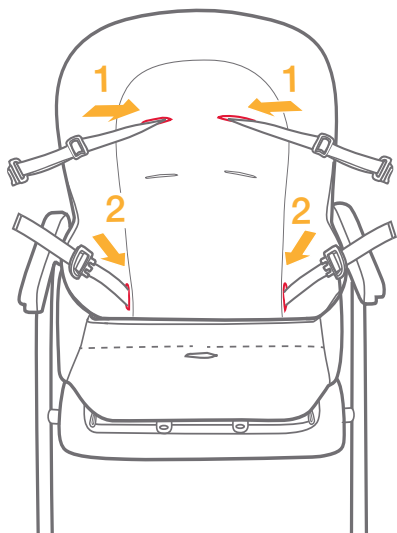




24



25



Congratulations on becoming part of the Joie family! We are so excited to be part of your life with your little one. While using the Joie Mimzy™ Snacker, your baby is enjoying a high quality, fully certified highchair, approved to European safety standards EN 14988:2017+A2:2024. When using as highchair, the suitable age is 6-36 months. Please carefully read this manual and follow each step to ensure a comfortable using and best protection for your child.

Please keep the Instruction Manual handy for future reference.

Visit us at [Joiebaby.com](http://Joiebaby.com) to download manuals and see more exciting Joie products.

For warranty information, please visit our website at [joiebaby.com](http://joiebaby.com)

## ! IMPORTANT! READ CAREFULLY AND KEEP FOR FUTURE REFERENCE.

### Emergency

In case of emergency or accident, it is most important to have your child taken care of with first aid and medical treatment immediately.

### Parts List

Make sure all parts are available before assembly. If any part is missing, please contact local retailer.

1 Leg Assembly	7 Seat Pad	13 5-Point Buckle
2 Seat Assembly	8 Seat	14 Shoulder Harness
3 Basket	9 Footrest	15 Backrest
4 Tray	10 Front Leg	16 Tray Horn
5 Tray	11 Basket	17 Screw
6 Tray Horn	12 Rear Leg	

## ⚠ WARNINGS

- ! Read all the instructions in this manual before using this product.
- ! Failure to follow these warnings and the assembly instructions could result in danger.
- ! Adult assembly required.
- ! NEVER LEAVE THE INFANT UNATTENDED IN THE HIGHCHAIR.
- ! Place infant on their back when using this product.
- ! When using the highchair, the product is intended for children able to sit up unaided and up to 3 years or a maximum weight of 15 kg.
- ! Secure your child at all times with the restraint system provided, in all reclining or upright positions. The tray is not designed to hold your child in the product.
- ! It is recommended that the product be used in the upright position only by children capable of sitting upright unassisted.
- ! The most reclined (cradle) backrest position is intended for children needing more support to sit upright.
- ! Stop using the reclined cradle when the child starts to stand up.
- ! DO NOT USE THIS PRODUCT FOR INFANT SLEEP.
- ! This product does not replace a cot or bed. Should the child fall asleep, then it should be placed in a suitable cot or crib.
- ! Infants should be placed on a firm, flat surface to sleep. Do not put objects or accessories in an infant's sleep environment.
- ! DO NOT place this product near a blind, cord, strap or similar item that could become wrapped around an infant's neck.
- ! DO NOT make any modification to this highchair or use it along with component parts from other manufacturers.
- ! DO NOT use the highchair if any parts are broken, torn or missing.
- ! Do NOT use accessories or replacement parts other than those approved by the manufacturer.
- ! DO NOT allow your child to stand in or on the highchair.
- ! Do NOT move or lift this product with the baby inside it.
- ! DO NOT allow children to play with or around highchair while occupied.
- ! DO NOT allow children to lean over sides of highchair. It may become unbalanced and tip over.
- ! DO NOT place any heavy bags, packages, or other items on the highchair tray. They may cause the chair to tip over.
- ! Always use on a flat and level floor.
- ! Be aware of the risk of open fire and other sources of strong heat in the vicinity of the product.
- ! All assembly fittings should be unfolded completely and tightened properly before using the product.

- ! Regularly check the locks and fittings for security.
- ! Regularly inspect the product for damaged hardware, loose joints, missing parts or sharp edges.
- ! Remove your child from product before folding or adjusting the highchair.
- ! Make sure the product has been folded or unfolded completely before letting your child approach the highchair.
- ! Consult the distributor for issues concerning maintenance, repair and part replacement.
- ! DO NOT place food that is hot enough to burn child's skin on the tray.
- ! Make sure that any harness is correctly fitted.
- ! Do not use the product unless all components are correctly fitted and adjusted.
- ! Do not use the high chair until the child can sit up unaided.
- ! To avoid suffocation, remove plastic bag and packaging materials before using this product. The plastic bag and packaging materials should then be kept away from babies and children.
- ! WARNING Make sure the safety harness is correctly fitted.
- ! WARNING Never leave the child unattended.
- ! To prevent serious injury or death from falling or sliding out, always use the restraint system and ensure it is correctly fitted.
- ! Falling hazard: Prevent your child from climbing on the high chair.
- ! Keep children away when unfolding and folding the product to avoid injury.
- ! Be aware of the risk of tilting when your child can push its feet against a table or any other structure.
- ! Always use the restraint system.
- ! WARNING: check this product regularly before using it, and do not use it if any part is loose or missing or if there are any signs of damage. Do not substitute parts. Contact the manufacturer if replacement parts or additional instructions are needed.

## Assemble Highchair

Please read all the instructions in this manual before assembling and using this product.

1. Align the tubes of leg assembly with those of seat assembly, and then insert to assemble. A click means both the two tubes are assembled properly. **1**
  - ! Please check the legs are assembled well by pulling them apart.
2. Using the button on the back of the seat to open the highchair by rotating the backrest upwards **2**. a "click" means the backrest is locked completely.
  - ! Please check the recline wire and seat latch slot are fully engaged before use. **2** -1
  - ! If they are not correctly engaged, please fold the unit as **19** and repeat the above operation.
3. Please attach basket to the support leg by 4 pairs of webbings **2** -2. Pull webbings upwards to remove basket.
4. Place the tray over tray bar **6** while pulling the button on both sides under the tray outward **6** -1 until a "click" is heard. The assembled highchair is shown as **7**
  - ! The tray horn cannot be removed after installed. **5**

## Use Buckle

**Tip** To avoid serious injury from falling or sliding out, always secure your child with harness.

Make sure your child is snugly secured, and that the space between the child and the shoulder harness is about the thickness of one hand.

DO NOT cross the shoulder belts. This will cause pressure on child's neck.

### Lock Buckle

Match the waist belt buckle with the shoulder buckle **8** -1, and "click" into the center buckle **8** -2, a "click" means the buckle is locked completely. **8** -3

### Release Buckle

Press the center button to release the buckle. **9**

## Adjust Shoulder and waister Harnesses

**Tip** The shoulder harness must go into the slot that is even with or slightly above the shoulders. In order to protect your child from falling out, after your child is placed into the seat, check whether the shoulder harnesses are at proper height.

For larger child, use the upper shoulder slots. For smaller child, use the lower shoulder slots.

Choose a pair of proper shoulder slots, thread shoulder harnesses out off previous slots **10**, and then insert into desired slots in seat pad and seat back. **11** **12**

! When changing shoulder harness slots, make sure shoulder harnesses are going through same slots in seat pad and seat back.

Use slide adjuster to change the harness length **13** -1, press the button **13** -2, while pulling the waist harness to proper length. **13** -3

## Use Tray

Sliding the tray along the tray bar to a proper position 14 while pulling the button under the tray outward 6-1.

The tray has 3 positions for adjustment. 15

- ! Ensure both sides of tray are in matching positions.
- ! Pull tray backward to ensure both guides are secure.

When the tray is not in use, It can be stored on the rear legs.

Lift the tray from the tray bar, while pulling the button under the tray outward. 6-1

Place the tray over the rear legs and snap the tray guides into place. It will automatically slide to the end of the rear legs 16. The stored tray is shown as 17

## Adjust Recline

There are 3 recline positions. 18

Squeeze button on the back of seat and push down or pull up to adjust the seat back to a desired recline position. 18-1

- ! It is recommended that the product be used in the upright position only by children capable of sitting upright unassisted.

## Fold Highchair

- ! DO NOT fold the highchair with child in it.

Fold the highchair by following these steps:

1. Remove tray before folding the highchair.
2. Pull the folding webbing upward, the back rest will automatically fold backward. 19
3. Store the tray on the rear legs. 20

## Detach Seat Pad

1. Disassemble 2 pairs of webbings and 2 pairs of elastic straps on both sides of armrest. 21-1 21-2
2. Disassemble 2 pairs of fastening pieces and 2 pairs of elastic straps on the bottom of seat. 22
3. Remove the clip from folding webbing. 23
4. Disassemble the webbing on the bottom of seat pad 24-1. Remove crotch harness and folding webbing from seat pad. 24-2 24-3
5. Remove shoulder harnesses and waist harnesses from seat pad 25-1 25-2, then remove seat pad from seat back.

To assemble seat pad in reverse steps.

## Care and Maintenance

- ! Your seat pad can be spot cleaned with a sponge and soapy water. DO NOT use bleach.
- ! Drip dry the washed seat pad. DO NOT put in dryer.
- ! To clean the frame, wipe with a damp cloth then wipe out any traces of moisture on the frame with a dry cloth.
- ! DO NOT use undiluted neutral detergent, gasoline or other organic solvent to wash the highchair. It may cause damage to the highchair.
- ! From time to time, check your highchair for worn parts, torn material or stitching. Replace or repair the parts as needed.
- ! If the highchair is not in use for a long period of time, please put it in the shade and somewhere your child can not access it.



Allison AU Pty Ltd.  
Unit 1, 35 Lyn Parade Prestons,  
NSW Australia 2170

bring the kids™

Share the joy at [joiebaby.com](http://joiebaby.com)

IM-001840C