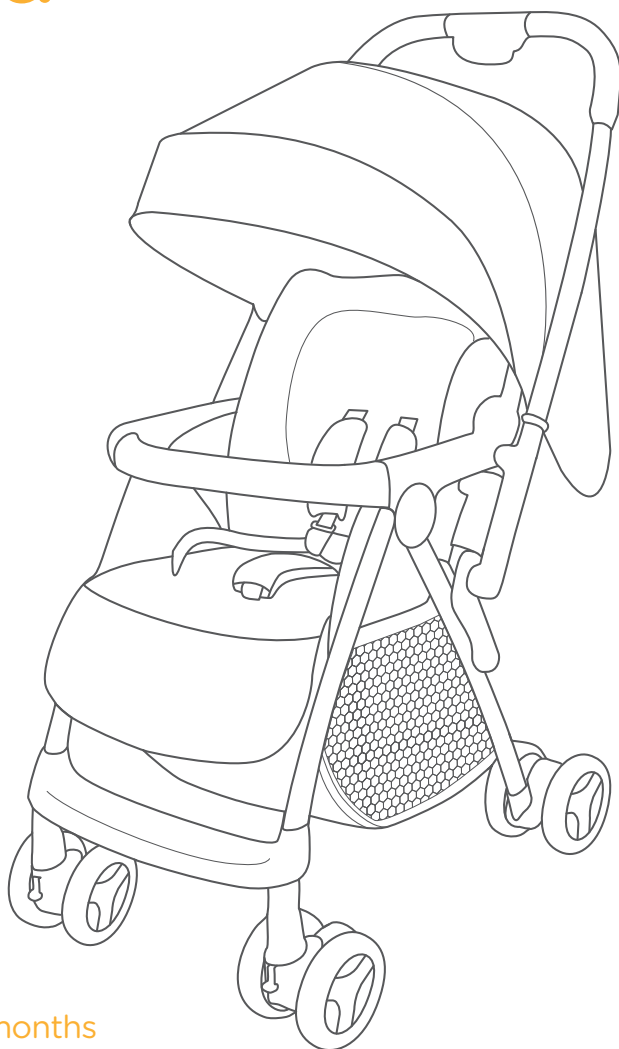


bright
by Joie™

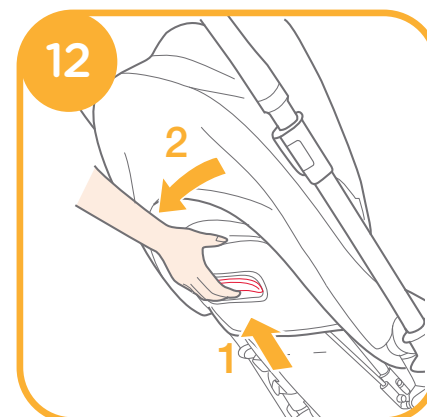
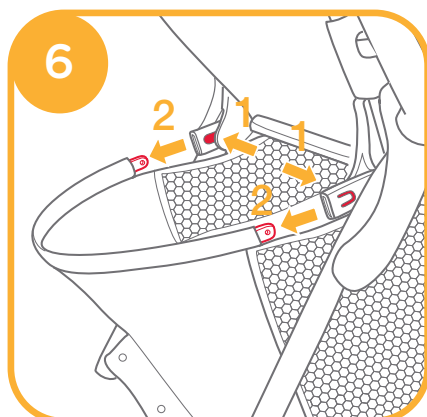
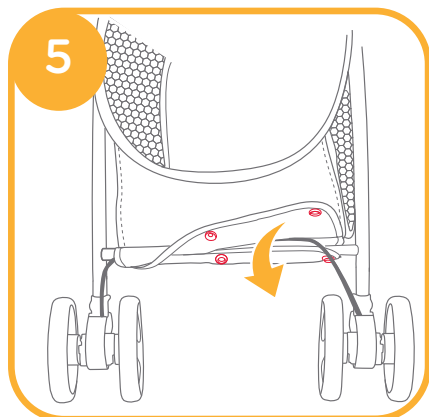
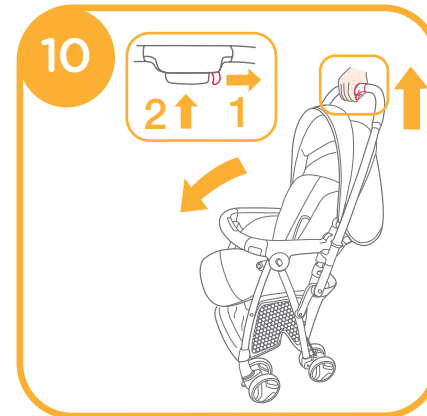
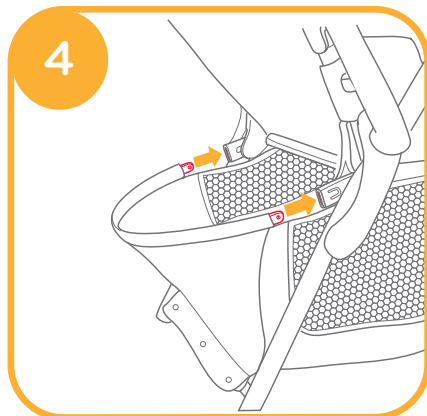
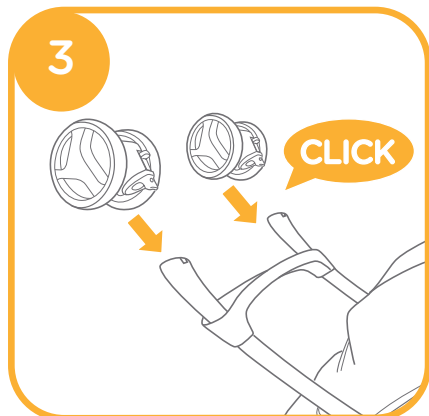
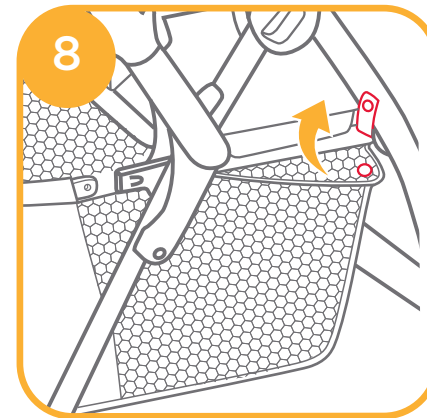
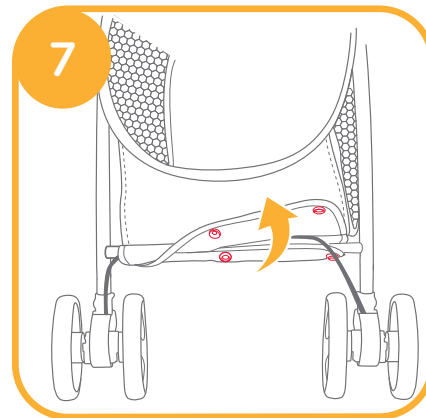
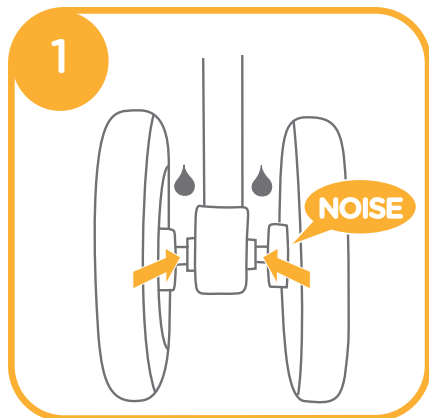
telo pea™

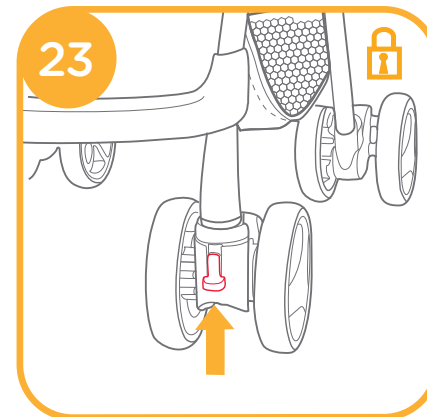
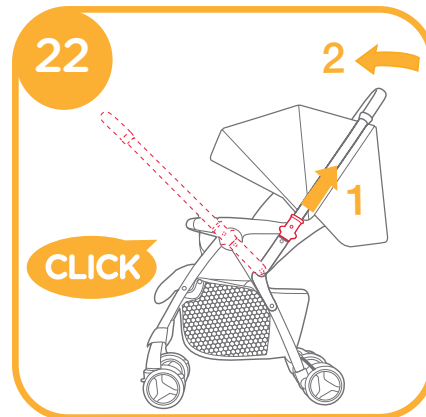
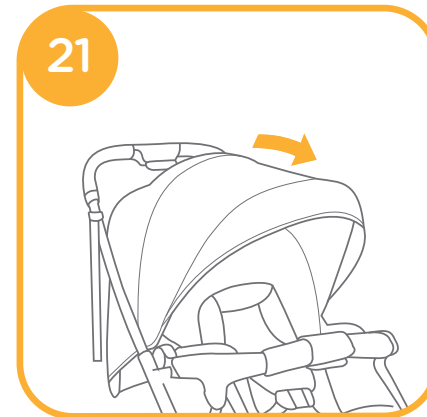
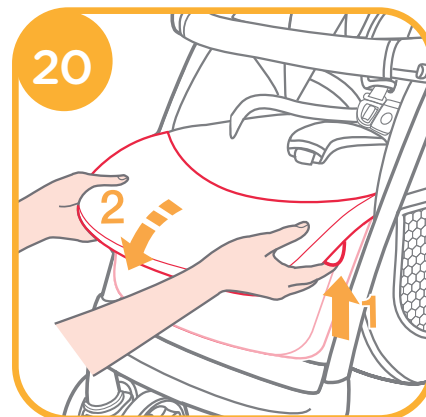
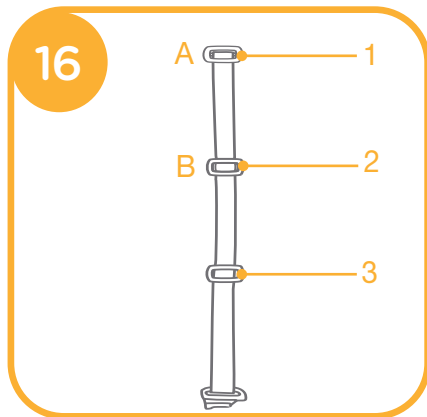
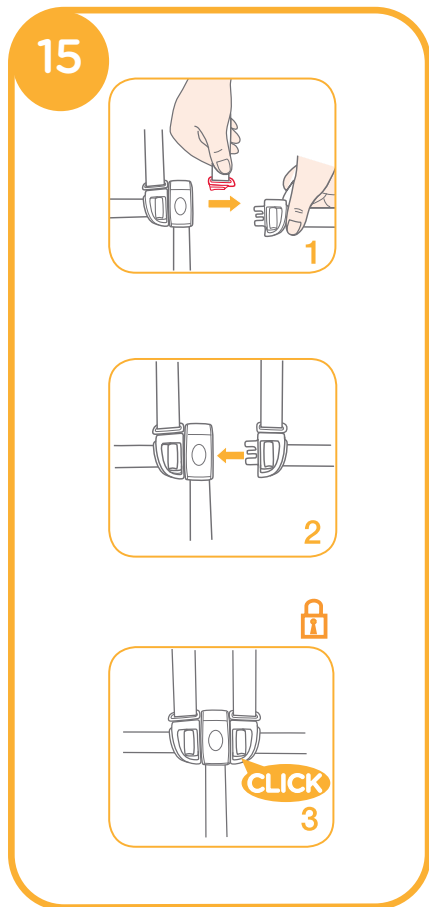
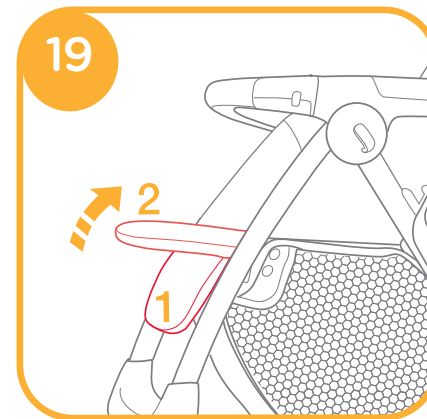
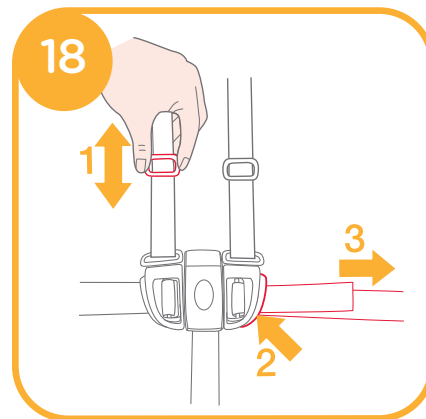
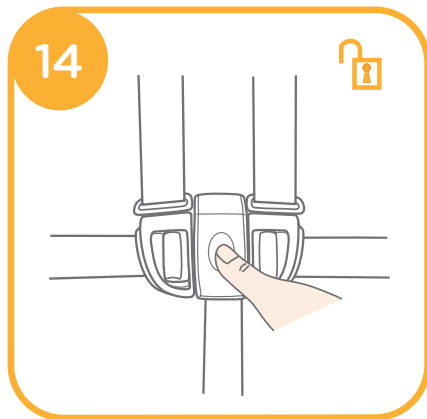
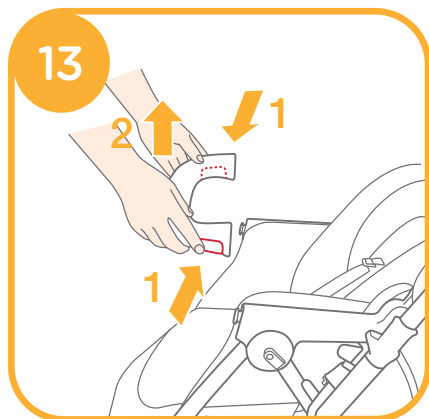
stroller

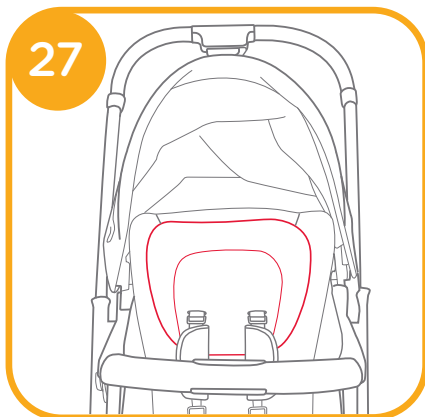
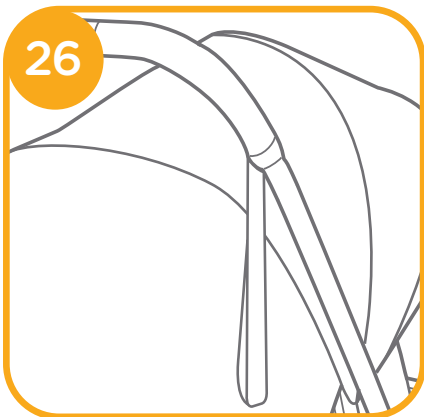
Instruction Manual



birth to 22kg/0-48 months







Congratulations on becoming part of the Joie family. We are so excited to be part of your journey with your little one. While traveling with the Bright by Joie Telopea™, you are using a high quality, fully certified stroller, complies with Australian Trade Practices Act 1974 Consumer Protection Notice No 8 of 2007. This product is suitable for use with children weighing under 22kg. Please carefully read this manual and follow each step to ensure a comfortable ride and best protection for your child.

IMPORTANT - Keep these instructions for future reference.

Visit us at joiebaby.com to download manuals and see more exciting Joie products!

Emergency

In case of emergency or accident, it is most important to have your child taken care of with first aid and medical treatment immediately.

Product Information

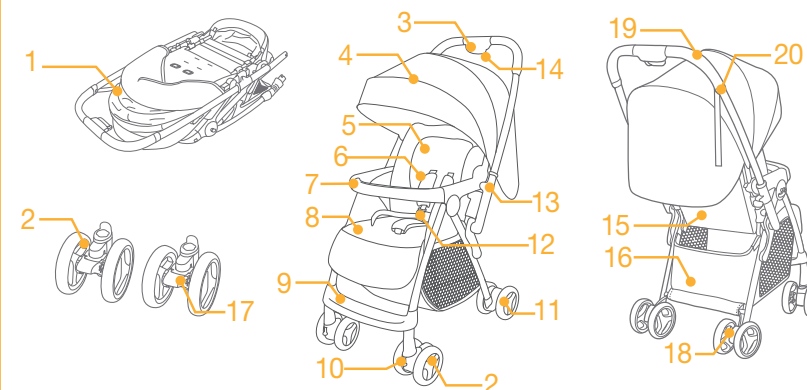
Read all the instructions in this manual before using this product. If you have any further questions, please consult the retailer. Some features may vary depending on model.

Product	Telopea Stroller
Suitable for	Child weighing under 22kg (birth - 48 months)
Materials	Plastics, metal, fabrics
Patent No.	Patents pending
Made in	China
Brand Name	Bright by Joie
Website	www.joiebaby.com
Distributor	Allison AU Pty Ltd

Parts List

Make sure all parts are available before assembly. If any part is missing, please contact local distributor. No tools are required for assembly.

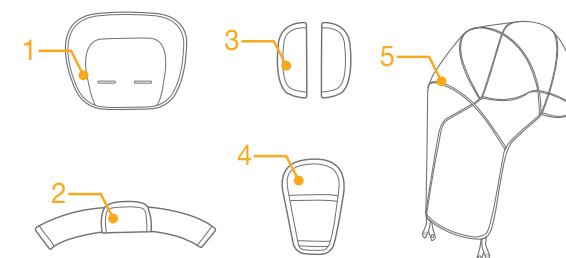
1 Stroller	7 Armbar	14 Secondary Lock
2 Front Wheels	8 Seat Pad	15 Backrest Adjuster
3 One-Hand-Fold Button	9 Footrest	16 Storage Basket
4 Hood	10 Front Swivel Lock	17 Front Break Lever
5 Headrest	11 Rear Wheel	18 Rear Brake Lever
6 Shoulder Harness Cover	12 5 Point Buckle	19 Handle
	13 Reversible Slider	20 Tether Strap



Accessories (May not be included)

- 1 Head Support
- 2 Armbar Cover
- 3 Shoulder Harness Cover
- 4 Crotch Harness Cover
- 5 Rain Cover

Accessories may be sold separately or may not be available depending on region.



WARNING

- ! FOLLOW THE MANUFACTURER'S INSTRUCTIONS.
- ! PUT ON ALL THE BRAKES WHENEVER YOU PARK THE STROLLER.
- ! DO NOT LEAVE CHILDREN UNATTENDED.
- ! DO NOT CARRY EXTRA CHILDREN OR BAGS ON THIS STROLLER.
- ! MAKE SURE CHILDREN ARE CLEAR OF ANY MOVING PARTS IF YOU ADJUST THE STROLLER, OTHERWISE THEY MAY BE INJURED.
- ! USE THIS HARNESS AT ALL TIMES.
- ! TO AVOID INJURY OR DEATH: ALWAYS APPLY THE BRAKES WHENEVER THE STROLLER IS STATIONARY.
- ! ALWAYS KEEP CHILD IN VIEW WHILE IN STROLLER.
- ! ALWAYS USE THE CROTCH COMBINATION WITH THE WAIST BELT AND THE SHOULDER HARNESSES.
- ! TO AVOID SERIOUS INJURY FROM FALLING OR SLIDING OUT, ALWAYS USE SEAT BELT.
- ! USE THIS STRAP TO STOP THE STROLLER ROLLING AWAY.
- ! ENSURE THAT ALL THE LOCKING DEVICES ARE ENGAGED BEFORE USE.
- ! DO NOT LET YOUR CHILD PLAY WITH THIS PRODUCT.
- ! NEVER LEAVE THE HARNESS BUCKLED WHEN NOT FITTED TO A CHILD IN THE STROLLER BECAUSE THE HARNESS CAN FORM LOOPS WHICH MAY POSE A STRANGULATION HAZARD.
- ! THE USE OF ACCESSORIES NOT APPROVED BY THE VEHICLE MANUFACTURER IS UNSAFE.
- ! ADULT ASSEMBLY REQUIRED.
- ! USE THE STROLLER WITH A CHILD WEIGHING LESS THAN 15KG. OVERLOADING THE STROLLER CAN BE UNSAFE AND MAY DAMAGE THE STROLLER.
- ! TO PREVENT A HAZARDOUS, UNSTABLE CONDITION, DO NOT PLACE MORE THAN 4.5KG IN THE STORAGE BASKET.
- ! THE STROLLER IS NOT BE USED NEAR AN OPEN FIRE OR EXPOSED FLAME.
- ! USE THE STROLLER WITH ONLY ONE CHILD AT A TIME. NEVER PLACE PURSES, SHOPPING BAGS, PARCELS OR ACCESSORY ITEMS ON THE HANDLE OR HOOD.
- ! OVERLOADING, FOLDING INCORRECTLY, OR USING COMPONENT PARTS FROM OTHER MANUFACTURERS MAY CAUSE THE STROLLER TO BE DAMAGED, BROKEN OR UNSAFE.
- ! PLEASE READ ALL THE INSTRUCTIONS IN THE MANUAL BEFORE USING THE PRODUCT. PLEASE SAVE INSTRUCTION MANUAL FOR FUTURE USE. FAILURE TO FOLLOW THESE WARNINGS AND INSTRUCTIONS MAY RESULT IN SERIOUS INJURY OR DEATH.
- ! CHILD MAY SLIP INTO LEG OPENINGS AND BE STRANGLED IF THE HARNESS IS NOT USED.
- ! CARE SHOULD BE TAKEN IF THE STROLLER IS USED ON STAIRS OR ESCALATORS.
- ! KEEP AWAY FROM HIGH TEMPERATURE OBJECTS, LIQUIDS, AND ELECTRONICS.
- ! NEVER ALLOW YOUR CHILD TO STAND ON THE STROLLER OR SIT IN THE STROLLER WITH HEAD TOWARD FRONT OF STROLLER.
- ! WARNING TO AVOID SERIOUS INJURY, MAKE SURE THE CANOPY IS ASSEMBLED WHEN BACKREST IS IN THE MOST RECLINED POSITION.

- ! NEVER PLACE THE STROLLER ON ROADS, SLOPES OR DANGEROUS AREAS.
- ! DO MAKE SURE ALL MECHANISMS ARE FIXED BEFORE USING THE STROLLER.
- ! TO AVOID STRANGULATION, DO NOT PLACE ITEMS WITH A STRING AROUND YOUR CHILD'S NECK, SUSPEND STRINGS FROM THIS PRODUCT, OR ATTACH STRINGS TO TOYS.
- ! DO NOT LIFT STROLLER WHILE CHILD IS IN STROLLER.
- ! DO NOT USE STORAGE BASKET AS A CHILD CARRIER.
- ! TO PREVENT TIPPING, NEVER LET CHILD CLIMB THE STROLLER. ALWAYS LIFT THE CHILD IN AND OUT OF THE STROLLER.
- ! TO AVOID FINGER ENTRAPMENT, USE CARE WHEN FOLDING AND UNFOLDING THE STROLLER.
- ! PLEASE KEEP THE STORAGE LATCH LOCKING CORRECTLY WHEN LIFT AND MOVE THE UNIT. PLEASE TRANSPORT THE FOLDED STROLLER SAFELY.
- ! TO ENSURE YOUR CHILD'S SAFETY, PLEASE MAKE SURE ALL PARTS ARE ASSEMBLED AND FASTENED PROPERLY BEFORE USING THE STROLLER.
- ! TO AVOID STRANGULATION, DO MAKE SURE YOUR CHILD IS CLEAR FROM THE CANOPY.
- ! THE VEHICLE IS DESIGNED FOR USE ON FLAT OR GENTLY SLOPING SURFACES AND MAY BE UNSTABLE ON HIGHER SLOPING AND UNEVEN SURFACES; RESULTING IN THE POSSIBILITY OF THE VEHICLE TIPPING OVER.
- ! DISCONTINUE USING STROLLER IF IT IS DAMAGED OR BROKEN.
- ! THIS PRODUCT IS NOT SUITABLE FOR RUNNING OR SKATING. STROLLER TO BE USED ONLY AT WALKING SPEED. THIS PRODUCT IS NOT INTENDED FOR USE WHILE JOGGING.

- ! TO AVOID SUFFOCATION, REMOVE PLASTIC BAG AND PACKAGING MATERIALS BEFORE USING THIS PRODUCT. THE PLASTIC BAG AND PACKAGING MATERIALS SHOULD THEN BE KEPT AWAY FROM BABIES AND CHILDREN.
- ! THIS STROLLER IS SUITABLE FOR USE WITH NEWBORN BABIES WHEN THE BACKREST IS SET TO THE MOST RECLINED POSITION.
- ! THE BRAKES MUST ALWAYS BE APPLIED WHEN THE STROLLER IS NOT MOVING.
- ! EXTRA CARE IS NEEDED IF USED ON MOVING VEHICLES AND CHILD SHOULD NOT BE LEFT UNATTENDED, EVEN WITH BRAKES ENGAGED.
- ! SECURE THE CHILD IN THE HARNESS AT ALL TIMES.
- ! DO NOT ATTACH ITEMS TO THE HANDLE, SEAT BACK OR SIDES OF THE STROLLER. ANY ADDITIONAL LOAD WILL AFFECT THE STABILITY OF THE STROLLER AND COULD CAUSE THE STROLLER TO TIP.
- ! TO AVOID SERIOUS INJURY, MAKE SURE THE CANOPY IS ASSEMBLED WHEN BACKREST IS IN THE MOST RECLINED POSITION.
- ! DO NOT USE FOR UNSUPERVISED SLEEPING.
- ! THE VEHICLE IS NOT TO BE USED AS AN UNSUPERVISED SLEEPING ENVIRONMENT.

Stroller Assembly

Please read all the instructions in this manual before assembling and using this product.

Open Stroller

Push secondary lock ②- 1 and squeeze one-hand-fold button. ②- 2. Meanwhile, pull the stroller backward to open. Latches should click into place.

! Check that the stroller is completely open before continuing.

Assemble Front Wheels

Assemble front wheels to front legs. Check that wheels are securely attached by pulling on wheel assemblies. ③

The front wheels can be disassembled by pressing the snap buttons.

Assemble & Detach Storage Basket

Assemble storage basket, please see images ④ - ⑤.

Detach storage basket, please see images ⑥ - ⑧.

The completely assembled stroller is shown as ⑨.

Stroller Operation

Fold Stroller

Before folding, pull up hood.

Push secondary lock ⑩ - 1 and squeeze one-hand-fold button ⑩ - 2. Push the stroller forward to fold.

A click sound means the stroller is folded completely. ⑪

! The stroller can not be folded when the handle is in the front position.

Adjust Backrest Angle

Recline Backrest

There are 4 angles for the backrest.

To recline the backrest, squeeze the recline handle on the back of the seat ⑫ - 1, pull down on the backrest. ⑫ - 2

To raise the backrest, push up.

! Make sure the recline is set properly for use.

Use Armbar

The armbar can be pulled up on both left and right sides.

Press armbar release button ⑬ - 1, and then pull up the armbar ⑬ - 2. Align the armbar end with matching component, and then push down to lock.

Tip Armbar can be opened for easy seating and unseating of child.

Use Buckle

Release Buckle

Press the center button to release the buckle. ⑭

Lock Buckle

Match the waist belt buckle with the shoulder buckle ⑮ - 1, and click into the center buckle. ⑮ - 2

A click sound means the buckle is locked completely. ⑮ - 3

! To avoid serious injury from falling or sliding out, always secure your child with harness.

! Make sure your child is snugly secured. The space between the child and the shoulder harness is about the thickness of one hand.

! Do not cross the shoulder belts. This will cause pressure on child's neck.

Use Shoulder & Waist Harnesses

! In order to protect your child from falling out, after your child is placed into the seat, check whether the shoulder and waist harnesses are at proper height and length.

⑯ - 1 Shoulder harness anchor A

⑯ - 2 Shoulder harness anchor B

⑯ - 3 Slide adjuster

For larger child, use shoulder harness anchor A and the highest shoulder slots. For smaller child, use shoulder harness anchor B and the lowest shoulder slots.

Use either shoulder harness anchor in the slots that are closest to child's shoulder height. ⑰

Use slide adjuster to change the harness length. ⑱ - 1

Press the button ⑱ - 2, while pulling the waist harness to proper length. ⑱ - 3

Tip For larger child, use the highest shoulder slots. For smaller child, use the lowest shoulder slots.

Adjust Calf Support

There are two reclining angles, 1-2 ⑲, for adjustment.

To raise calf support, push the calf support from position 1 to position 2. ⑲

To lower calf support, press the adjustment buttons on both sides of the calf support ⑳ - 1, and rotate the calf support downwards. ⑳ - 2

Use Hood

To open the hood, pull hood toward front. 21
To fold the hood, push hood toward back.

Switch Handle Direction

To change handle position, pull up the left and right reversible sliders 22- 1 and move the handle to the other side until it clicks into place. 22- 2

! Make sure child's hands and legs are clear from the armrest when switching the handle.

Use Front Swivel Lock

Pull up the front swivel locks to maintain the moving direction. 23

Tip It is recommended to use swivel lock on uneven surfaces.

Use Brake

To lock front wheels, step on the brake levers. 24 Lift the brake levers to release wheels.

To lock rear wheels, step on the brake lever. 25 Lift the brake lever to release wheels.

Tip The brake must be engaged when placing and removing children.

Tip Always apply brake when stroller is in stopped position.

Tip To ensure brake is fully on, gently rock the stroller backwards and forwards before releasing the handle.

! To prevent potential hazard, always make sure the parking device for all swiveling wheels are engaged and the swiveling wheels are locked when you use the handle in reversed position.

Use Tether Strap

Use the tether strap to prevent the stroller inadvertently rolling away. Check that when your hand is through the loop, it allows you to easily control the stroller. 26

Use Accessories

Accessories may be sold separately or may not be available depending on region.

Use Head Support

see images 27

Use Shoulder Harness Cover and Crotch Harness Cover

The shoulder harness cover or crotch harness cover can be removed from the webbing. To assemble shoulder harness cover and crotch harness cover in reverse steps.

Care and Maintenance

1. Removable seat pad may be washed in cold water and drip-dried. No bleach.
2. To clean stroller frame, use only household soap and warm water. No bleach or detergent.
3. From time to time check your stroller for loose screws, worn parts, torn material or stitching. Replace or repair the parts as needed.
4. Excessive exposure to sun or heat could cause fading or warping of parts.
5. If stroller becomes wet, open hood and allow to dry thoroughly before storing.
6. If wheels squeak, use a light oil (e.g., Silicon Spray, antirust oil, or sewing machine oil). It is important to get the oil into the axle and wheel assembly. 1
7. When using your stroller at the beach, completely clean your stroller afterward to remove sand and salt from mechanisms and wheel assemblies.



Distributed by Allison AU Pty Ltd

ACN: 642 240 140

Unit 1, 35 Lyn Parade

Prestons

NSW Australia 2170

For after-sales & warranty service, contact:

1800 951 070

customerservice@allisonau.com.au