

Joie™

Instruction Manual

chive™

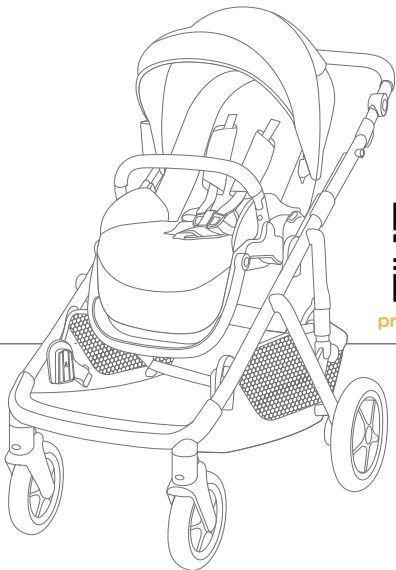
single-to-double stroller

Upper seat weight - up to 50 lb. (22.7 kg)

Lower seat weight - rear-facing up to 35 lb. (16 kg)

forward-facing up to 50 lb. (22.7 kg)

Height - up to 45 in. (114.3 cm) in any seat



watch my



product videos

IMPORTANT!

Read all instructions before assembling and using the stroller.

Keep instructions for future use.

Contents:

- 3 Warranty Information
- 4 Warnings
- 8 Parts List
- 10 Opening Stroller
- 10 Attaching & Detaching Front Wheels
- 12 Attaching & Detaching Rear Wheels
- 14 Attaching & Detaching Canopy
- 14 Attaching & Detaching Cup Holder
- 16 Attaching & Detaching Arm Bar
- 18 Securing Your Child
- 22 Adjusting Recline
- 22 Adjusting Calf Support
- 24 Using Front Swivel Locks
- 24 Using Brake
- 26 Using Canopy
- 28 Removing Harness & Buckle Covers
- 28 Adjusting Handlebar
- 30 Adjusting Seat Height
- 30 Using Reversible Seat
- 34 Folding Stroller
- 36 Using Second Stroller Seat (sold separately)
- 38 Using Removable Shopping Basket (sold separately)
- 40 Using Joie Infant Car Seat (sold separately) on Upper Seat Mounts
- 42 Seating Options
- 44 Care & Maintenance

Child Usage Requirements

This stroller is suitable for use with children who meet the following requirements:

Weight: Upper stroller seat - up to 50 lb. (22.7 kg)
Lower stroller seat - rear-facing up to 35 lb. (16 kg)
forward-facing up to 50 lb. (22.7 kg)

Height: up to 45 in. (114.3 cm), in either seat

When using with a Joie infant car seat, refer to the requirements in the car seat manual.

Warranty Information:

Product Registration

Please fill in the information below. The model number and the date of manufacture are located on a label on the stroller frame. Fill out the prepaid registration postcard attached to the product and mail it today. To register your product online, please visit: <https://joiebaby.com/us/register-gear>.

Model Name: _____

Model Number: _____

Date of Manufacture: _____

Date of Purchase: _____

register your
product online



Limited Warranty

We have purposely designed our high-quality products so that they can grow with both your child and your family. Because we stand by our product, our gear is covered by a custom limited warranty per product, starting from the day it was purchased. Please have the proof of purchase, model number, and date of manufacture available when you contact us. For warranty information please visit: www.joiebaby.com.

Contact

In the USA:

Joie Baby USA Consumer Service Contact Info.

Address: 70 Thousand Oaks Blvd., Morgantown, PA 19543

In Canada:

Joie Bébé Canada Consumer Service Contact Info.

Address: PO Box 96528 RPO Brunswick, Kirkland, Quebec H9H 5L4

Email: info.us@joiebaby.com

Phone: 1-866-798-7866

WARNING

Failure to follow these warnings and instructions could result in serious injury or death.

- **NEVER** leave your child unattended.
- **Choking Hazard:** Keep small parts away from children. These components may pose a choking hazard.
- **Suffocation Risk:** Remove all plastic covers before using the stroller. Destroy these covers or keep them completely out of the reach of children.
- **Modification Warning: DO NOT** modify the stroller in any way unless specified in the manual. Unauthorized changes can compromise safety.
- **Genuine Parts ONLY:** Use **ONLY** genuine parts and accessories from Joie.
- **ONLY** use the infant car seat adapters that are included with this stroller.
- **Overloading, incorrect folding, and using accessories other than those approved by Joie**, e.g., child seats, bag hooks, rain covers, buggy boards, baskets, etc., may damage or make the stroller unstable and unsafe.
- **When using the stroller in double mode**, load a child into the upper seat before loading a child into the lower seat.
- **When using the stroller in double mode**, unload a child from the lower seat before unloading a child from the upper seat.

WARNING

Failure to follow these warnings and instructions could result in serious injury or death.

- **Weight & Height Limits:** This stroller is **ONLY** suitable for children up to 50 lb. (22.7 kg) in the upper seat, up to 35 lb. (16 kg) in the rear-facing lower seat, up to 50 lb. (22.7 kg) in the forward-facing lower seat and up to 45 in. (114.3 cm) tall in any seat. Exceeding these limits can cause wear and tear, potentially leading to an unstable stroller.
- **One child per seat use:** This stroller is designed for one child per seat. **NEVER** transport more than one child per seat at a time.
- **To prevent a hazardous, unstable condition, DO NOT** place more than 20 lb. (9.07 kg) in the storage basket and **NEVER** place purses, shopping bags, parcels, or other items on the handlebar or canopy.
- **DO NOT** use the storage basket as a child carrier.
- **Avoid serious injury from falling or sliding out. ALWAYS** use the harness. After fastening the buckles, adjust the belts to get a snug fit around your child.
- **Broken Stroller:** If the stroller becomes damaged or broken, stop using it immediately. A damaged stroller can be unsafe.

WARNING

Failure to follow these warnings and instructions could result in serious injury or death.

- **Avoid Finger Entrapment:** Use care when folding and unfolding the stroller. Ensure that the stroller is fully erected and locked before allowing your child near the stroller.
- **Strangulation Hazard: DO NOT** place items with a string around your child's neck, suspend strings from the stroller, or attach strings to toys.
- **DO NOT** let your child play with the stroller.
- **ALWAYS** keep your child in view while they are in the stroller.
- **NEVER** allow your child to stand on the stroller.
- **The brake MUST be engaged** when the stroller is stopped and when seating or unseating your child.
- **Negotiate curbs and rough ground carefully.** Repeated impact could cause damage to the stroller.
- **The stroller is to be used ONLY at a walking speed** and is not intended for use while jogging, skating, etc.
- **NEVER** use the stroller on stairs or escalators. You may suddenly lose control of the stroller, or your child may fall out.
- **DO NOT allow** a child who weighs more than 35 lb. (16 kg) to use the lower stroller seat while rear-facing.

WARNING

Failure to follow these warnings and instructions could result in serious injury or death.

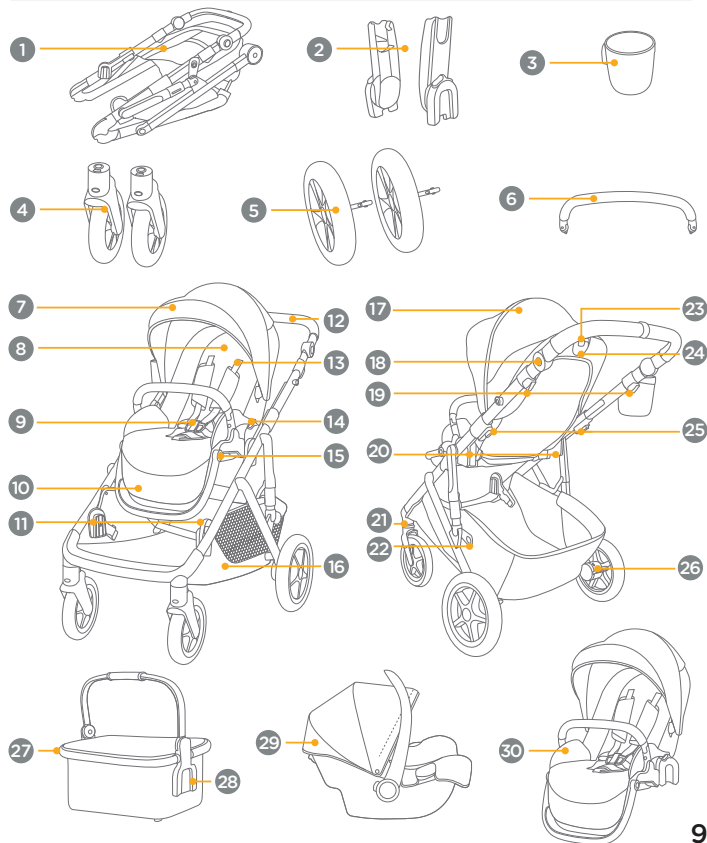
- **The stroller seat is not intended for sleep.** Should your child need to sleep, they should be placed in a crib or sleeping area based on their requirements.
- **ALWAYS** allow the fabric to air dry away from direct heat.
- **DO NOT** leave the stroller near a strong heat source, i.e. a radiator or open fire.
- **DO NOT** store the stroller in a damp place.
- **To avoid burns, NEVER** put hot liquids in the cup holder.
- **To prevent a hazardous, unstable condition, DO NOT** place more than 1 lb. (0.5 kg) in the cup holder.
- **When using the stroller frame with a Joie infant car seat,** refer to the child usage requirements listed in the car seat instruction manual.
- **To prevent a hazardous, unstable condition, DO NOT** place more than 22 lb. (10 kg) in the removable shopping basket.
- **DO NOT** use the removable shopping basket as a child or pet carrier.

Parts List:

Please make sure there are no missing parts. Please contact Joie Consumer Service if anything is missing.

- 1 Stroller Frame
- 2 Infant Car Seat Adapters
- 3 Cup Holder
- 4 Front Wheels
- 5 Rear Wheels
- 6 Arm Bar
- 7 Canopy
- 8 Seat Pad
- 9 Restraint Buckle
- 10 Calf Support
- 11 Lower Seat Mounts
- 12 Handlebar
- 13 Shoulder Harness
- 14 Seat Release Button (x2)
- 15 Calf Support Adjustment Button (x2)
- 16 Storage Basket
- 17 Canopy Window
- 18 Handlebar Height Adjustment Button (x2)
- 19 Frame Folding Buttons
- 20 Upper Seat Mounts
- 21 Front Swivel Lock (x2)
- 22 Storage Latch
- 23 Seat Folding Button
- 24 Recline Lever
- 25 Seat Height Adjustment Buttons
- 26 Brake Lever
- 27 Removable Shopping Basket (sold separately)
- 28 Removable Shopping Basket Mount (x2)
- 29 Joie Infant Car Seat (sold separately)
- 30 Second Stroller Seat (sold separately)

Parts List:



Opening Stroller:

- 1 - Separate the storage latch from the storage mount.
- 2 - Lift the handlebar upwards. A “clicking” sound will confirm that the stroller is completely open
- 3 - Insert the stroller seat into the upper seat mounts.
A “clicking” sound will confirm that the stroller seat is properly locked in place.
- 4 - Pull on the seat back and rotate until the seat clicks into place.

IMPORTANT: Check that the stroller is completely open by pushing down on the handlebar.

Attaching & Detaching Front Wheels:

5 - Attaching the Front Wheels:

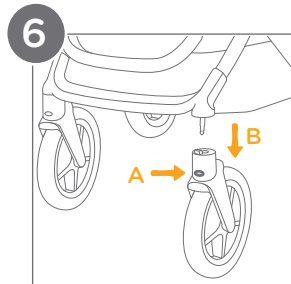
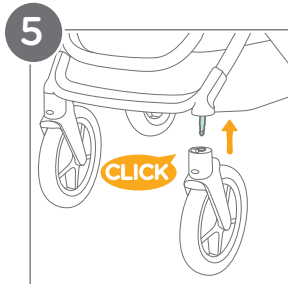
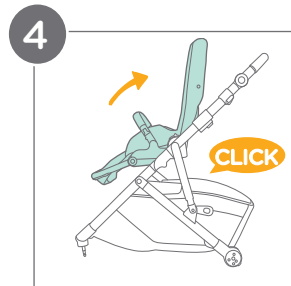
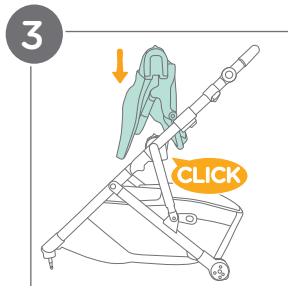
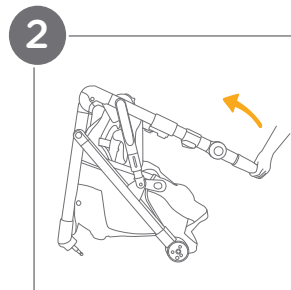
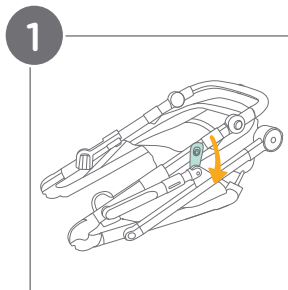
Insert the front wheels into the front legs.

A “clicking” sound will confirm that the wheels are properly locked in place.

IMPORTANT: Safety Check: ALWAYS pull on the wheels after attachment to ensure that they are securely fastened.

6 - Detaching the Front Wheels:

To remove the front wheels, press the release button (A) on each wheel and pull the front wheel away from the front leg (B).



Attaching & Detaching Rear Wheels:

1 - Attaching the Rear Wheels:

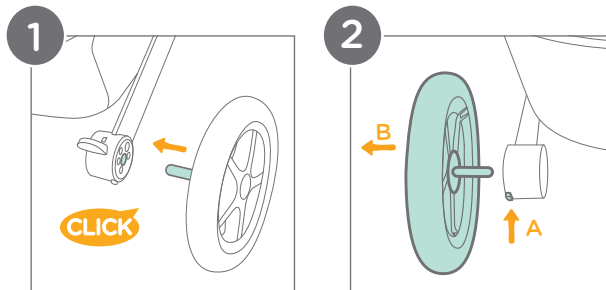
Insert the rear wheels into the rear legs.

A “clicking” sound will confirm that the wheels are properly locked in place.

IMPORTANT: Safety Check: ALWAYS pull on the wheels after attachment to ensure that they are securely fastened.

2 - Detaching the Rear Wheels:

To remove the rear wheels, press the release button (A) on the base of each rear leg and pull the rear wheel away from the rear leg (B).



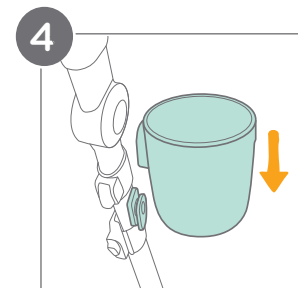
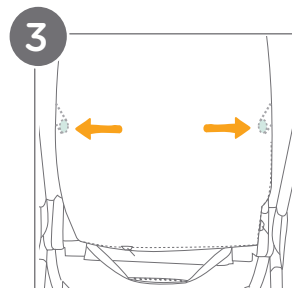
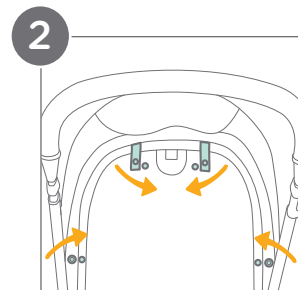
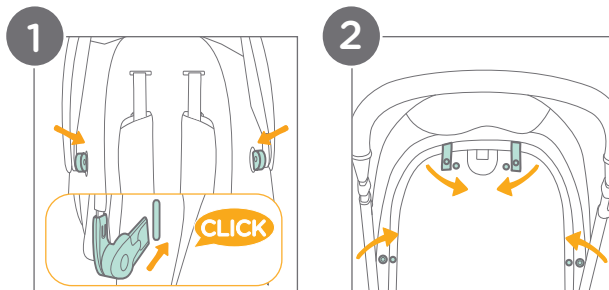
Attaching & Detaching Canopy:

Attaching the Canopy:

- 1 - Insert the canopy mounts into the slots on the front of the seat frame. A “clicking” sound will indicate that the canopy is properly locked in place.
- 2 - Attach the four snaps on the top and sides of the rear flap of the canopy to the corresponding snaps on the seat back.

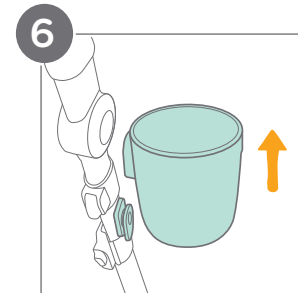
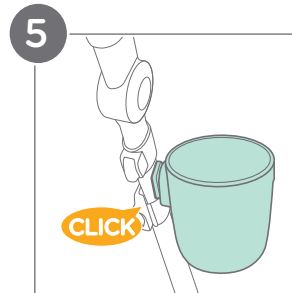
3 - Detaching the Canopy:

Detach the four snaps from step 2 above. Press the canopy release tabs located on both sides of the canopy mount. These are inside the fabric, but can be pressed from the outside. The canopy will lift off from the front.



Attaching & Detaching Cup Holder:

- 4 - To attach, align the cup holder with the designated mount on the stroller frame. Slide the cup holder downward until it snaps over the mount.
- 5 - A “clicking” sound will indicate that the cup holder is properly locked in place.
- 6 - To detach the cup holder, pull upward to slide it off of the mount.



Attaching & Detaching Arm Bar:

1 - Attaching the Arm Bar:

Insert both ends of the arm bar into the arm bar mounts. A “clicking” sound will confirm that the arm bar is properly locked in place.

2 - Detaching the Arm Bar:

To remove the arm bar, press the arm bar release buttons (A) and pull the arm bar out (B).

3 - Rotating the Arm Bar:

Press and hold one arm bar release button (C) while lifting up to rotate the arm bar at the arm bar mount on the other side of the stroller (D).

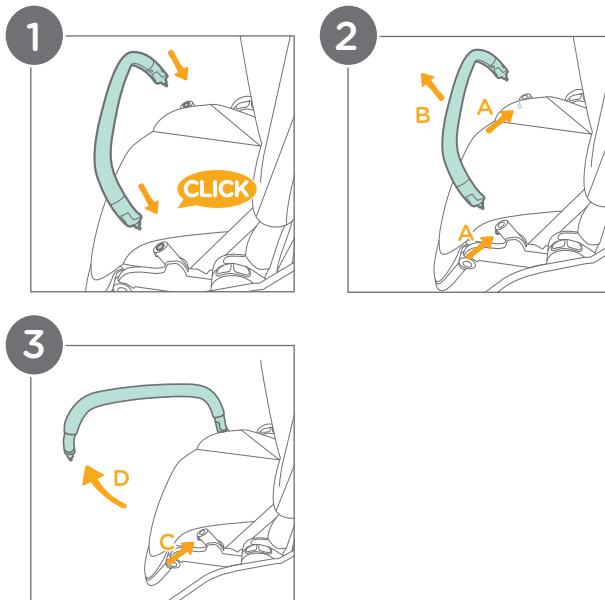
IMPORTANT: ALWAYS secure the child with the harness.

The arm bar is **NOT** a restraint device.

DO NOT lift the stroller by the arm bar. This can cause damage or injury.

Use care when attaching the arm bar onto the stroller with a child in the stroller.

CAREGIVER MUST ALWAYS help the child get into and out of the stroller.



Securing Your Child:

1 - Releasing the Restraint Buckle:

Locate the button in the center of the restraint buckle and press it firmly to release the harness straps.

2 - Locking the Restraint Buckle:

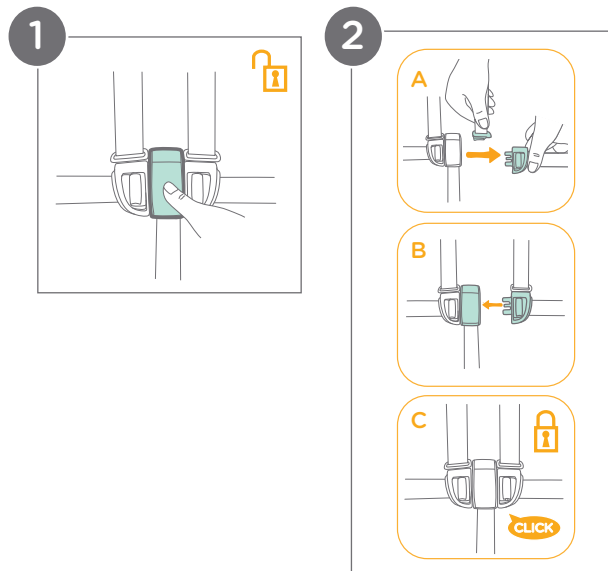
Slide the shoulder harness buckle into the waist belt buckle (A). Insert the combined buckles into the center buckle (B). A “clicking” sound will confirm that the restraint buckle is properly locked in place (C).

IMPORTANT: ALWAYS engage the brake: This is crucial whenever the stroller is stopped, especially when seating or unseating your child. A parked stroller with a disengaged brake can roll away, posing a serious fall hazard.

Secure your child with the harness: NEVER leave your child unbuckled in the stroller. A secure harness is essential to help prevent your child from falling or sliding out of the stroller.

Proper harness adjustment: Ensure that the harness straps are snug but comfortable. The space between the child and the harness straps should be about a 1/2 inch (1 cm).

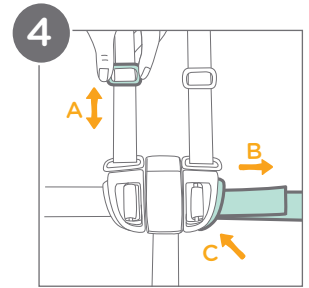
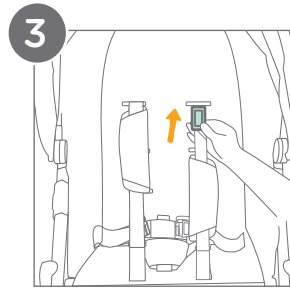
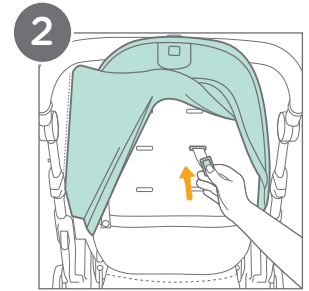
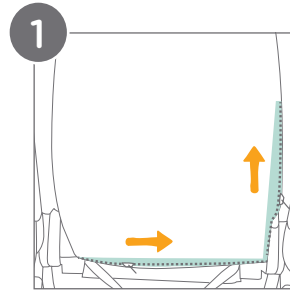
Shoulder strap positioning: NEVER cross the shoulder straps. **ALWAYS** keep them straight over your child's shoulders to avoid putting pressure on the child's neck.



Shoulder Harness Height Adjustment:

- 1 - Unzip the zippers on the side and bottom of the seat back to access the harness anchors.
- 2 - Turn the harness anchor to be in line with the harness strap. Thread it through the shoulder harness slot from back to front.
- 3 - Re-thread the harness anchor through the correct slot from front to back. Ensure that both sides are adjusted to slots at the same height. Re-zip the zippers.
- 4 - Use the slide adjuster (A) to adjust the length of the shoulder harness straps. Pull the waist harness strap (B) to tighten the waist harness. Press the button (C) on the waist belt buckle and pull to loosen the waist harness strap (B).

IMPORTANT: DO NOT adjust the harness anchors with a child in the stroller.

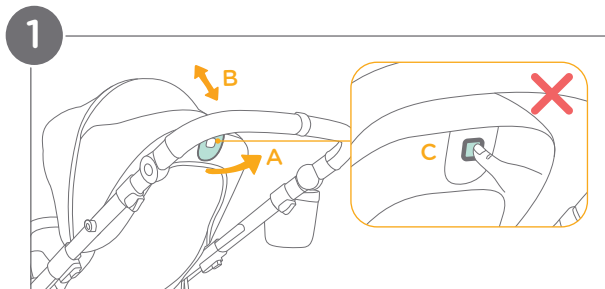


Adjusting Recline:

There are 3 recline angles for the backrest.

- 1 - Pull the recline lever (A) on the back of the seat. Pull down to recline the backrest or push up to raise the backrest (B).

DO NOT press the seat folding button (C) in the middle of the recline lever when adjusting the recline angle.



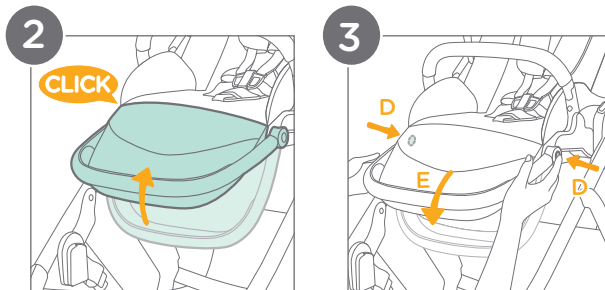
Adjusting Calf Support:

2 - Raising the Calf Support:

Lift the 2-position calf support upwards. A “clicking” sound will indicate that it is properly locked in place.

3 - Lowering the Calf Support:

Press the calf support adjustment buttons on both sides of the calf support (D) and rotate the calf support downwards (E).



Using Front Swivel Locks:

1 - Locking the Front Wheels:

Ensure that the front wheels are positioned straight ahead, not angled to the side or turned around.

The swivel locks are located on the backside of each wheel.

Rotate each swivel lock clockwise. A “clicking” sound will confirm that the wheels are properly locked in a straight position.

Unlocking the Front Wheels:

Rotate each swivel lock counter-clockwise. The wheels will swivel freely again.

Tip It is recommended to use the swivel locks on uneven surfaces.

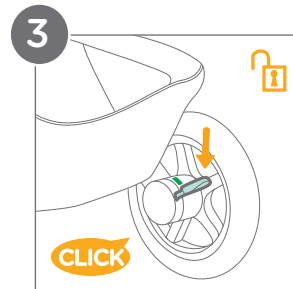
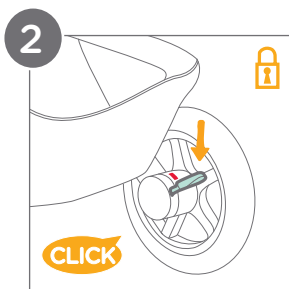
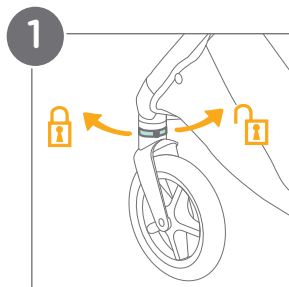
Using Brake:

2 - To lock the rear wheels, press the brake lever downwards, and the indicator will show red.

3 - To unlock the rear wheels, press the brake lever downwards, and the indicator will show green.

A “clicking” sound will confirm that the brake lever was fully pressed down.

IMPORTANT: ALWAYS set the brake when the stroller is not moving.



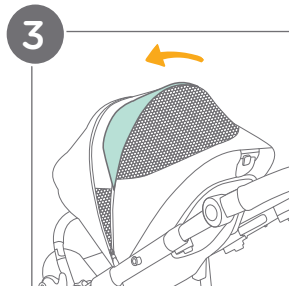
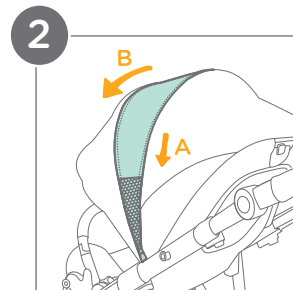
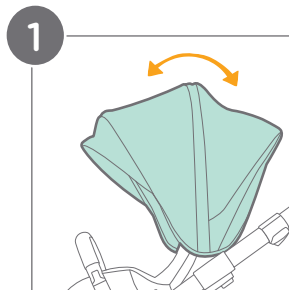
Using Canopy:

Opening and Closing the Canopy:

- 1 - To open, pull the canopy forward toward the front of the seat. To close, push the canopy back.
- 2 - For extended canopy coverage, unzip the canopy zipper (A) and pull the canopy fully forward (B).

Ventilation:

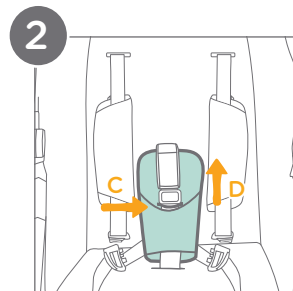
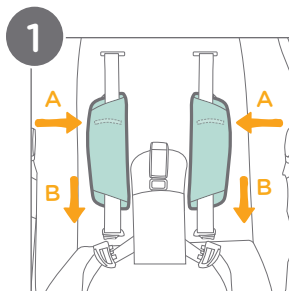
- 3 - For additional airflow, flip the canopy window cover up.



Removing Harness & Buckle Covers:

1 - Removing the Shoulder Harness Covers:

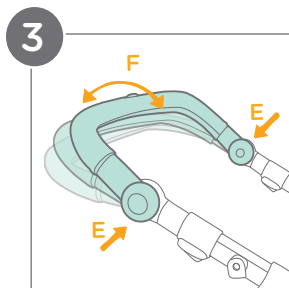
Release the restraint buckle and slide the shoulder harness buckles out of the waist belt buckle. Unthread the shoulder harness straps from the elastic on the inside of the shoulder harness covers (A). Slide the harness covers off of the straps by pulling them down (B).



2 - Removing the Crotch Buckle Cover:

Unbuckle the harness straps. Unthread the center buckle from the elastic (C) on the inside of the crotch buckle cover. Pull the crotch buckle cover up to remove it (D).

To reattach the covers, repeat the above steps in reverse order.



Adjusting Handlebar:

There are 3 handlebar positions:

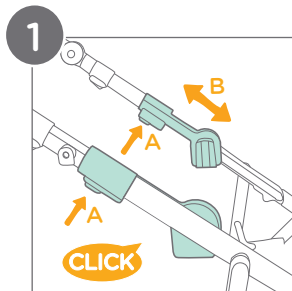
- 3 - To adjust the handlebar height, squeeze and hold the handlebar height adjustment buttons (E) and rotate the handlebar up or down (F).

Adjusting Seat Height:

There are 3 seat height positions:

- 1 - To raise or lower the seat height, squeeze and hold both seat height adjustment buttons (A) and push down or pull up (B).

Lock the seat in position by releasing the height adjustment buttons. A “clicking” sound will confirm that the seat is properly locked in place. Ensure that both sides are adjusted to the same height.



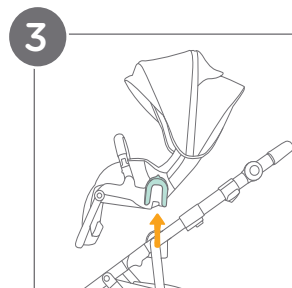
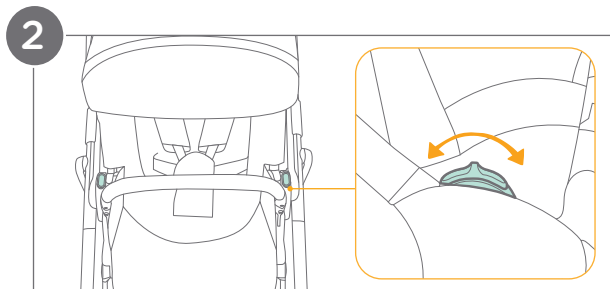
Using Reversible Seat:

IMPORTANT: DO NOT reverse the seat with a child in the stroller.

The seat is reversible, so the child can face rearward or forward.

- 2 - Use your thumbs to pull both seat release buttons towards you while holding onto the underside of the seat.
- 3 - Lift the seat off of the frame.

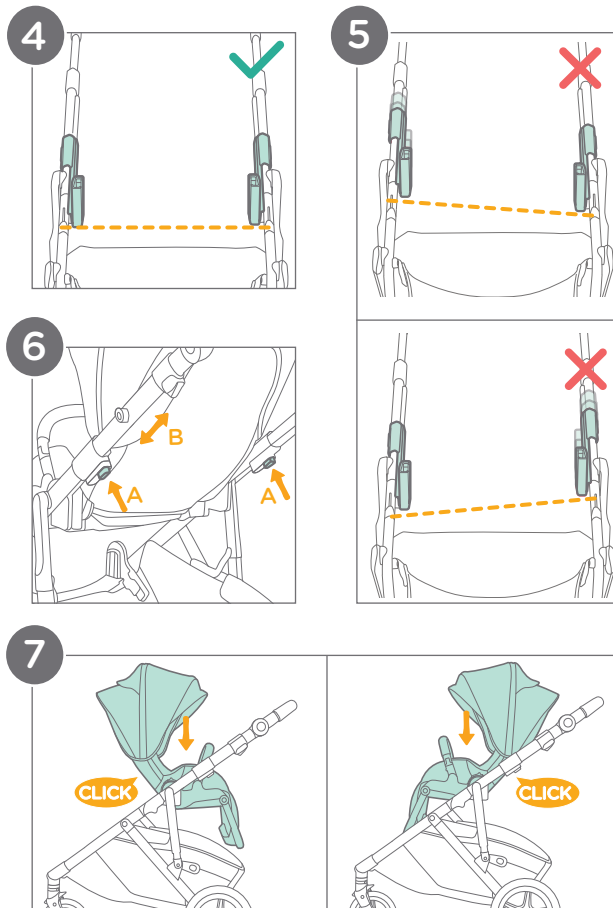
(Using Reversible Seat continued on pg. 32)



Using Reversible Seat: (cont.)

- 4- The seat mounts must be level for the seat to attach to the frame.
- 5- If the mounts are uneven:
- 6- Squeeze and hold the seat height adjustment buttons (A) to unlock the seat mount. Pull up or push down on the seat mounts to adjust them to the same seat height (B). Lock the seat mounts into position by releasing the seat height adjustment buttons.
- 7- Turn the seat to the reverse direction and reinsert the seat onto the seat mounts. A “clicking” sound will confirm that the seat is properly locked in place.

IMPORTANT: Safety Check: ALWAYS pull up on the seat to ensure that it is securely attached.



Folding Stroller:

The stroller can be folded with the seat rear-facing or forward-facing. For the easiest fold, move the stroller seat to the lowest height position.

IMPORTANT: DO NOT fold the frame when the front swivel locks are engaged.

Before folding, ensure that the canopy is completely closed.

DO NOT fold the frame with an infant car seat, lower stroller seat, or removable shopping basket attached. Infant car seat adapters may remain attached.

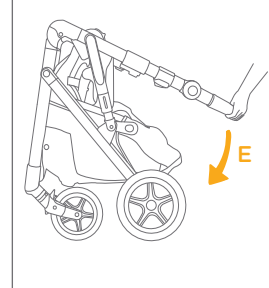
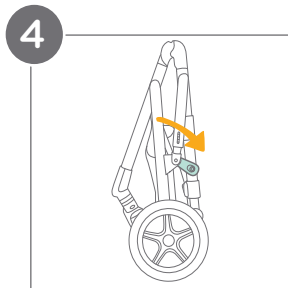
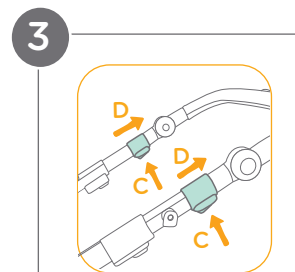
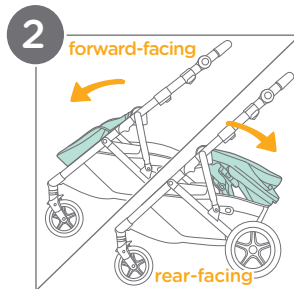
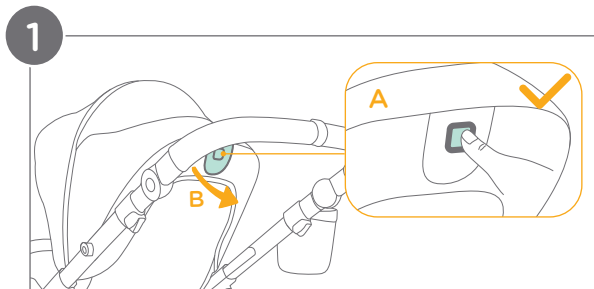
- 1 - Press the seat folding button (A) on the middle of the recline lever, then pull the recline lever (B).
- 2 - Fold the seat toward the calf support. The seat will collapse on itself and pivot down into the storage basket.
- 3 - Press in both frame folding buttons (C). Pull upwards on both fold release tabs (D) simultaneously and hold them in position. Push down on the handlebar to fold the stroller (E).
- 4 - The fold latch will engage automatically when the stroller is fully folded.



The stroller can stand when folded.



Use the handle on the back of the seat to carry the stroller.



Using Second Stroller Seat: (sold separately)

A second stroller seat can be purchased separately and can be added to the lower seat mounts of the stroller.

The second stroller seat is interchangeable and has the same functionality as the included seat.

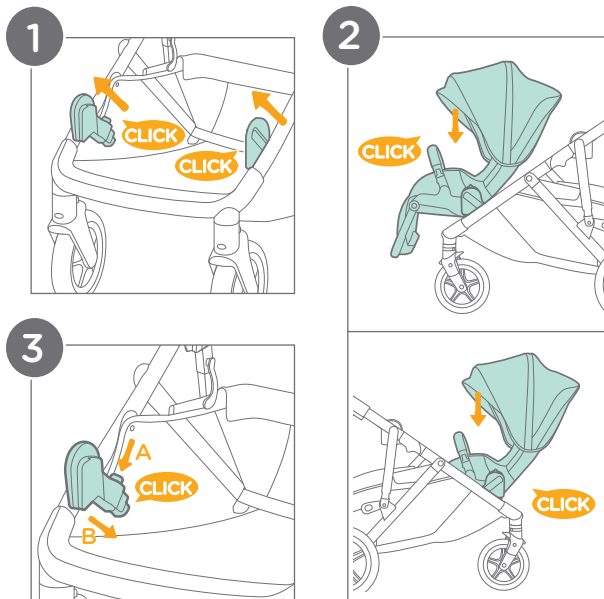
Attaching the second stroller seat to the lower seat mounts:

- 1 - Extend the lower seat mounts by sliding them forward. A “clicking” sound will confirm that the lower seat mounts are properly locked in place.
- 2 - Align the second stroller seat with the lower seat mounts and click it into place. It can be attached forward-facing or rear-facing.
- 3 - When not using the lower seat mounts, store them by pushing the button at their base (A) and sliding them backwards (B). A “clicking” sound will confirm that the lower seat mounts are properly stored.

See pg. 42 for complete double stroller seating options.

IMPORTANT: DO NOT fold the stroller while the second stroller seat is attached to the lower seat mounts.

DO NOT allow a child who weighs more than 35 lb. (16 kg) to use the lower stroller seat while rear-facing.



Using Removable Shopping Basket:

(sold separately)

- 1 - Unfold each removable shopping basket mount from the storage position and rotate the handle upward.

Attaching and detaching the removable shopping basket to the upper seat mounts:

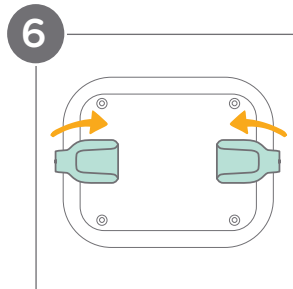
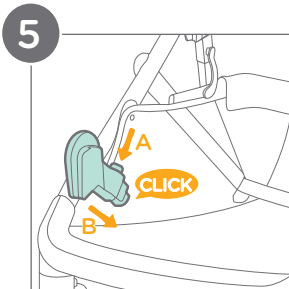
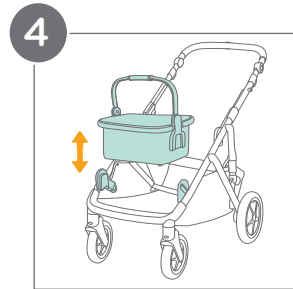
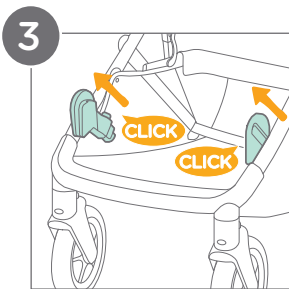
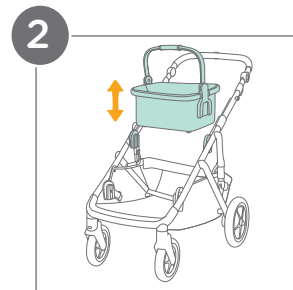
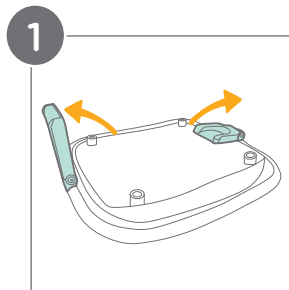
- 2 - Align the removable shopping basket mounts with the upper seat mounts and slide into place. To detach, pull up on the shopping basket handle.

Attaching and detaching the removable shopping basket to the lower seat mounts:

- 3 - Extend the lower seat mounts by sliding them forward. A “clicking” sound will confirm that the lower seat mounts are properly locked in place.
- 4 - Align the removable shopping basket mounts with the lower seat mounts and slide into place. To detach, pull up on the removable shopping basket handle.
- 5 - When not using the lower seat mounts, store them by pushing the button at their base (A) and sliding them backwards (B). A “clicking” sound will confirm that the lower seat mounts are properly stored.
- 6 - Store the removable shopping basket flat by folding the mounts under the basket and rotating the handle down.

IMPORTANT: DO NOT fold the stroller while the removable shopping basket is attached.

The maximum weight in the removable shopping basket is 22 lb. (10 kg).



Using Joie Infant Car Seat (sold separately) on Upper Seat Mounts:

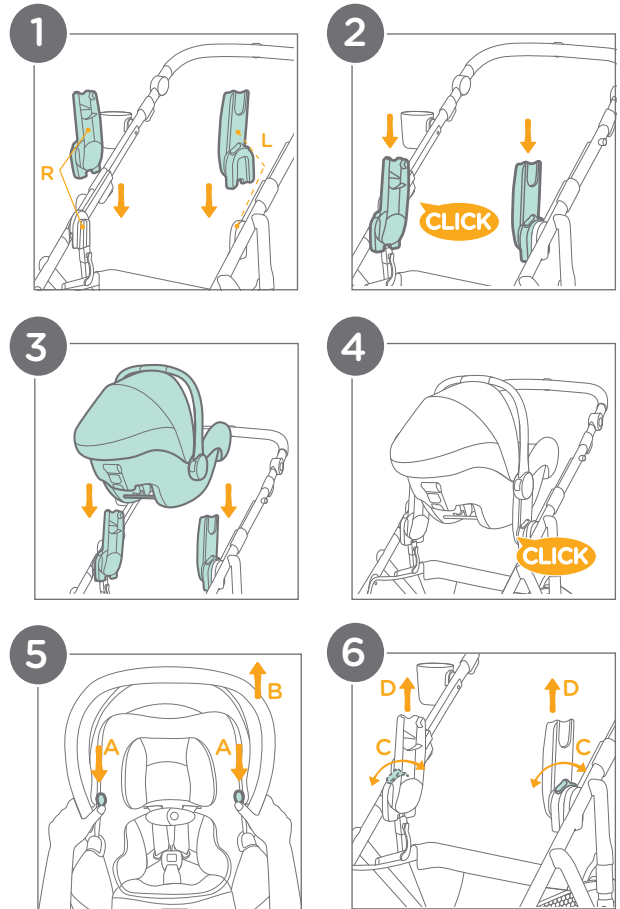
For information about using your Joie infant car seat, refer to the instruction manual included with the infant car seat.

- 1 - First, remove any seat or accessory that is attached to the upper seat mounts. Attach the included car seat adapters to the upper seat mounts. Ensure that the letters on the adapters match the letters on the upper seat mounts.
- 2 - A “clicking” sound will confirm that the adapters are properly locked in place.
- 3 - Attach the infant car seat by placing the car seat onto the adapters.
- 4 - A “clicking” sound will confirm that the car seat is properly locked in place.
- 5 - To remove the infant car seat, press the car seat release buttons (A) and lift the car seat upwards (B).
- 6 - To remove the infant car seat adapters, slide the adapter release buttons in either direction (C) and lift the adapters upwards (D).

IMPORTANT: Fall Hazard: ALWAYS check that the infant car seat and adapters are securely attached to the stroller by pulling up on them after they are in place.

ALWAYS secure your child with the car seat harness when using the car seat.

ONLY use the infant car seat adapters that are included with this stroller.



Seating Options:

The stroller can be used in double mode or single mode. When using the stroller frame with a second stroller seat, removable shopping basket, or Joie infant car seat, please refer to the following instructions.

- 1 - When using the stroller in double mode, the upper seat mounts must be adjusted to the highest height position.
Ensure that the lower seat mounts are extended by sliding them forward. A “clicking” sound will confirm that the lower seat mounts are properly locked in place.
- 2 - When using the stroller in single mode, the **ONLY** item permitted on the lower seat mounts alone is the removable shopping basket. The stroller seat, removable shopping basket, or Joie infant car seat can be adjusted to any of the 3 height positions.
- 3 - **DO NOT** use the stroller frame with an infant car seat forward-facing in any position.
DO NOT use two infant car seats.
NEVER use an infant car seat on the lower seat mounts.

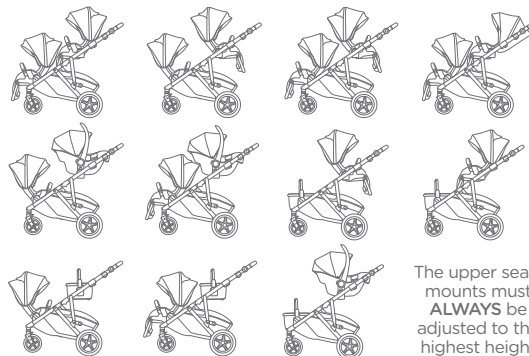
IMPORTANT: The second stroller seat, the removable shopping basket, and the Joie infant car seat are sold separately from the stroller.

When using the stroller in double mode, load a child into the upper seat before loading a child into the lower seat.

When using the stroller in double mode, unload a child from the lower seat before unloading a child from the upper seat.

1

double mode options

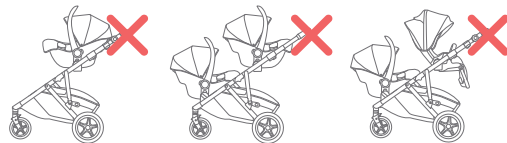


2

single mode options



3



Care & Maintenance:

Cleaning:

Seat pad: Spot clean with a sponge and soapy water.

Stroller frame: Wipe clean with a solution of warm water and mild household soap. Avoid bleach and harsh detergents.

Plastic parts: Periodically wipe clean with a damp cloth.

Metal parts: After contact with water, thoroughly dry the metal parts to prevent rust.

Maintenance:

Regular inspection: Check the stroller regularly for loose or missing parts. Discontinue use if parts are loose or missing.

Worn parts: Replace any worn or damaged parts. Use **ONLY** Joie replacement parts.

Torn material or stitching: Repair or replace torn fabric or stitching. Use **ONLY** Joie replacement fabrics.

Contact Joie Consumer Service at:

Email: info.us@joiebaby.com • Phone: 1-866-798-7866

Storage:

Extreme weather exposure: Avoid excessive sun or heat exposure to prevent fading or warping of parts. Avoid storing outside or in cold conditions.

Drying after use: If the stroller gets wet, open the canopy and allow it to dry completely before storing.

Wheel Maintenance:

Squeaking wheels: Apply a light coat of lubricating oil (e.g., silicone spray, anti-rust oil, or sewing machine oil) directly to the axle and wheel assembly to eliminate squeaking.

Beach Use:

After beach use: Thoroughly clean the stroller to remove sand and salt from the mechanisms and wheels. This helps to prevent rust.

Cup Holder:

Use mild detergent and warm water.

For a more thorough cleaning, remove the cup holder (see pg. 14).

The cup holder can be placed on the top rack of your dishwasher for convenient cleaning.

Joie™

Effortlessly happy.

Helping parents be their best
with worry-free baby gear.