

# Joie™

Instruction Manual

## mint UAS™

Built-in UAS infant seat

Height: less than 76 cm (30 in.)

Weight: 1.8 to 13.6 kg (4 to 30 lb.)

---



watch my



install videos

## IMPORTANT!

Read the instructions in this manual before use of the product.  
Keep this manual for future use.

---

## Contents:

---

- 3 Important
  - Welcome to the Family!
  - If You Need Help
  - Register Your Child Restraint
- 5 Child Requirements
- 6 Warnings
- 14 Best Practices
- 15 Vehicle Compatibility
- 16 Vehicle Belts
- 18 Choose Your Installation
- 22 Parts List
- 24 Using Canopy
- 24 Adjusting Handle
- 26 Checking and Adjusting Harness Height
- 30 Removing and Attaching Head Support
- 32 Removing Infant Insert
- 32 Removing Low Birth Weight Pillow
- 34 Install Using UAS Attachments
- 36 Detaching UAS Attachments
- 38 Install Using Lap/Shoulder Belt
- 40 Install Using Lap Belt ONLY
- 42 Install in an Aircraft
- 42 Accessories
- 44 Securing Child in Seat
- 48 Removing Canopy/Fabric
- 52 Care and Maintenance

---

## Important:

---

### Welcome to the Joie Family!

Ensure your child's safety – **READ THIS MANUAL CAREFULLY!**

Although no child restraint can promise to protect in every situation, using it correctly reduces the chance of serious injury. Even if the child restraint seems easy, follow the step-by-step instructions in this book.

**Store this instruction manual in the pocket located behind the softgoods near the lap belt guide on your child's left side.**

### If You Need Help

If you have questions in Canada, about parts, use, or maintaining your child restraint, contact our Customer Service Department for assistance. To ensure a speedy response, please have your child restraint's model number and date of manufacture ready. You can find the information on a sticker located on the underside of the child restraint.

### Joie Bébé Canada Consumer Service Contact Info.

**Address:** PO Box 96528 RPO Brunswick,  
Kirkland, Quebec H9H 5L4

**Email:** [info.us@joiebaby.com](mailto:info.us@joiebaby.com)

**Phone:** 1-866-798-7866

---

## Important:

---

### Register this Child Restraint

Child restraints could be recalled for safety reasons. You must register this restraint to be reached in a recall. Send your name, address, e-mail address if available and the restraint's model number and manufacturing date to **Joie Bébé Canada, PO Box 96528 RPO Brunswick, Kirkland, Quebec H9H 5L4**, call **1-866-798-7866**, or register online at:

[www.joiebaby.com/register-car-seat](http://www.joiebaby.com/register-car-seat)

For recall information, call Transport Canada at 1-800-333-0371 or go to [www.tc.gc.ca](http://www.tc.gc.ca)

For future reference, record the following information about your child restraint in case you move, lose your registration card, or need to reference it for any reason. You can find this information on the registration card or on the label located on the back of the child restraint:

**Model Name:**

---

**Model Number:**

---

**Date of Manufacture:**

---

**Date of Purchase:**

---

---

## Child Requirements:

---

This child restraint is for a child that meets BOTH of the following requirements:

**Weight:** 1.8 to 13.6 kg (4 to 30 lb.)

**Height:** less than 76 cm (30 in.)

**STOP using this child restraint as soon as the child reaches the max. weight OR the max. height.**

**NEVER use this child restraint forward-facing.**

According to accident statistics, children are safer when properly restrained in the rear seating positions than in the front seating positions. **Children should ride rear-facing as long as possible.**

### Preterm or Low Birth Weight Infants

To ensure the safety of your preterm or low birth weight infant (born before 37 weeks or weighing less than 2.3 kg (5 lb)), Joie recommends following the AAP's guidelines and consulting your doctor or hospital staff before the child's first car or airplane trip. A medical evaluation is crucial to check for breathing and heart rate concerns when traveling in a rear facing child restraint.

For more information or to have your restraint system inspected by a certified professional, visit the CPSAC website <https://cpsac.org/find-a-tech/>

---

## ⚠️ WARNING

---

**DEATH OR SERIOUS INJURY** can occur if you fail to follow the warnings, instructions and labels on the child restraint.

---

- Read **ALL INSTRUCTIONS** before use of the infant carrier.
- Read the vehicle owner's manual for information on child restraint installation.
- **KEEP INSTRUCTIONS FOR FUTURE USE.**
- Failure to follow these instructions and the child restraint's labels can result in the child striking the vehicle's interior during a sudden stop or crash.
- **DO NOT** allow anyone who has not read the instruction manual to install or use this child restraint.
- **DO NOT** place a rear-facing child seat on the front seat with the air bag. **DEATH OR SERIOUS INJURY CAN OCCUR.** The back seat is the safest place for children 12 and under.



---

## ⚠️ WARNING

---

**DEATH OR SERIOUS INJURY** can occur if you fail to follow the warnings, instructions and labels on the child restraint.

---

- If an air bag inflates, it can hit the child and car seat with great force and cause serious injury or death to your child. Review your vehicle owner's manual for more information about air bags and car seat use.
- **DO NOT** use the child restraint if it is damaged or broken or if parts are missing.
- **NEVER use a child restraint that has been involved in a MODERATE or SEVERE crash.**
- Use **ONLY** with a child that weighs 1.8-13.6 kg (4-30 lb.) and whose height is less than 76 cm (30 in.).
- **STOP** using this child restraint as soon as the child reaches the max. weight **OR** the max. height.

---

## WARNING

---

**DEATH OR SERIOUS INJURY** can occur if you fail to follow the warnings, instructions and labels on the child restraint.

---

- **NEVER** secure this child restraint using an inflatable seat belt. Move to a vehicle seat that does not have an inflatable seat belt, or install using the vehicle's UAS.
- A child's safety is your responsibility. **NEVER** leave child unattended.
- Before each use, **ALWAYS** check the child restraint to make sure it is tightly secured to the vehicle seat.
- According to accident statistics, children are safer when properly restrained in the rear seating positions than in the front seating positions.
- If your vehicle does not have a back seat, review your vehicle owner's manual.
- The vehicle seat belt system **MUST** hold child restraint securely. Not all vehicle seat belts can be used with a child restraint.

---

## WARNING

---

**DEATH OR SERIOUS INJURY** can occur if you fail to follow the warnings, instructions and labels on the child restraint.

---

- Select a suitable location for the child restraint in your vehicle. Secure the child restraint with a vehicle seat belt or lower anchor attachments that are properly routed as shown in this manual.
- **NEVER** attach two lower anchor attachments to one vehicle lower anchor point unless specifically allowed by the vehicle manufacturer.
- A rear-facing child restraint must be properly leveled. An improperly reclined child restraint can result in breathing difficulties, injury, or ejection.
- **DO NOT** remove the UAS anchors from the child restraint. If using the vehicle seat belt to secure the child restraint, the UAS anchors must be properly stored.
- **DO NOT** allow the child restraint to contact the vehicle interior (the side of the car door or the seat in the front).

---

## ⚠️ WARNING

---

**DEATH OR SERIOUS INJURY** can occur if you fail to follow the warnings, instructions and labels on the child restraint.

- **STRANGULATION HAZARD:** Children have **STRANGLER** in loose or partially buckled harness straps. Fully restrain the child even when the carrier is used outside of the vehicle.
- **SUFFOCATION HAZARD:** The infant carrier can roll over on soft surfaces and suffocate a child. Never place the carrier on beds, sofas, or other soft surfaces.
- **FALL HAZARD:** Child's activity can move child restraint. **NEVER** place carrier on counter tops, tables, or any other elevated surface. Always stay within arm's reach whenever the carrier is not on the floor/ground.
- **FALL HAZARD:** The carrier can fall from a shopping cart. **DO NOT** use on a shopping cart.



---

## ⚠️ WARNING

---

**DEATH OR SERIOUS INJURY** can occur if you fail to follow the warnings, instructions and labels on the child restraint.

- Be sure the handle locks into the carrying position before lifting the carrier.
- **DO NOT** use the child restraint if it has frayed or cut harness straps, or is damaged in any way. To find out if damaged parts are replaceable, call 1-866-798-7866.
- **NEVER** modify any part of the child restraint.
- **DO NOT** attach additional padding, toys, or other devices unless made by Joie and described in these instructions. Use only approved accessories. Unapproved items can injure your child and may void the warranty.
- **NEVER** leave the child restraint unsecured in your vehicle even when it is unoccupied. In a crash, it could become a projectile and injure other vehicle occupants.

---

## WARNING

---

**DEATH OR SERIOUS INJURY** can occur if you fail to follow the warnings, instructions and labels on the child restraint.

---

- **NEVER** use clothing or blankets that interfere with providing a properly tightened harness. An unsecured or improperly harnessed child can come out of the restraint during a crash.
- Place blankets over child **AFTER** the harness has been properly tightened.
- **ONLY** use with Joie strollers or appropriate Joie adapters designed for use with Joie strollers.

This child restraint system conforms to all applicable Canadian Motor Vehicle Safety Standards.

---

## WARNING

---

**NEVER** use a child restraint that has been involved in a **MODERATE** or **SEVERE** crash.

Even if there is no visible damage, the child restraint's internal structure may be compromised, and may not protect your child in a future crash.

**A child restraint is still usable after a minor incident in which ALL of the following apply:**

- 1) The vehicle was able to be driven away from the crash site.
- 2) The vehicle door nearest the car restraint was **NOT** damaged.
- 3) None of the passengers in the vehicle sustained any injuries in the crash.
- 4) If the vehicle has air bags, the air bags did not deploy during the crash; and
- 5) There is no visible damage to the child restraint.

**Contact Joie with any questions or concerns.**

---

## Best Practices:

---

### Expiration:

**DO NOT USE THIS CHILD RESTRAINT 7 YEARS AFTER ORIGINAL PURCHASE.**

Stop using it after that date and dispose of it. If the original purchase date is unknown, the manufacture date located on the child restraint should be used.

### Hot Weather Warning:

Child restraints can become extremely hot in the sun or warm weather. Always check the seat temperature before placing your child inside to avoid burns.

### Clothing:

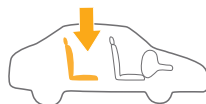
For proper harness fit and child safety, avoid bulky clothing like heavy jackets or snowsuits when using the child restraint. Ensure the harness is snug but comfortable on your child.

---

## Vehicle Compatibility:

---

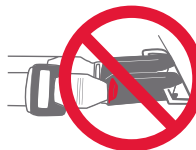
**You MUST read and understand ALL child restraint related instructions and warnings in your vehicle owner's manual to correctly and safely use this child restraint in your vehicle.**



This child restraint can **ONLY** be installed on vehicle seats that face forward. **DO NOT** install in seats that face to the sides or rear of the vehicle.



**DO NOT** place a rear-facing child seat on the front seat with the air bag. **DEATH OR SERIOUS INJURY CAN OCCUR.** The back seat is the safest place for children 12 and under.



**NEVER** attach two lower anchor attachments to one vehicle lower anchor point unless specifically allowed by the vehicle manufacturer.

**DO NOT** use both the vehicle seat belt and UAS at the same time.

If your vehicle is equipped with front passenger side air bags, check your vehicle owner's manual for child restraint installation instructions.

---

## Vehicle Compatibility: (cont.)

---

Vehicle classes in which this restraint system may be used.

This restraint system may only be used in passenger cars, multi-purpose passenger vehicles (MPVs), and trucks equipped with lap/shoulder seat belts and tether anchors.

---

## Vehicle Belts:

---

These vehicle belts **CANNOT BE USED** with your child restraint. Install with lower anchors instead.

### 1 - Motorized Belts (Automatic)

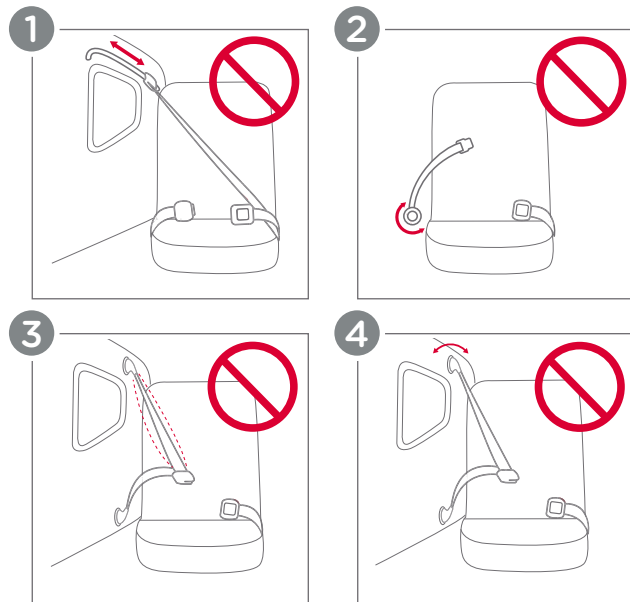
These should not be used unless the shoulder belt can be removed, the lap belt is locked and use is allowed by the vehicle manufacturer.

### 2 - Non-Locking (ELR) Lap Belts

This belt only locks in a crash or sudden stop and should only be used with a belt shortening clip.

### 3 - Airbag/Inflatable Belts

### 4 - Door Mounted Belts



## Choose Your Installation:

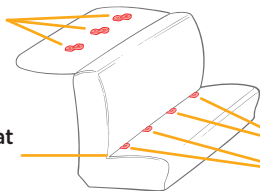
This child restraint can be installed in your vehicle using either the vehicle seat belt **OR** the rigid lower anchor attachments. Both are safe to use. **INSTALL USING ONLY ONE METHOD** and use the method that provides the best installation for you and your vehicle.

## UAS Overview:

### UAS (Lower Anchor Attachment) with Tether:

The UAS system, or lower anchor attachment and top tether, allows you to securely attach your child restraint in your car without using the vehicle seat belt. All 2003 and newer model year vehicles are required to have a UAS system, although some manufacturers began including UAS earlier. Some vehicle owner's manuals use the term ISOFIX or LATCH to identify the UAS system.

#### Vehicle's Tether Anchor



Typical seat in a passenger vehicle. Other vehicle types may have different UAS locations.

#### Vehicle Seat Bight

#### UAS Lower Anchors



Review your vehicle owner's manual for exact location and use.

## Vehicle Belt Install:

### Vehicle Seat Belt:

Refer to your vehicle owner's manual to determine if the belts in your vehicle lock by switching the seat belt's retractor **OR** have a locking latch plate that locks the vehicle's seat belt.

#### Vehicle Seat Belt Terms Retractor

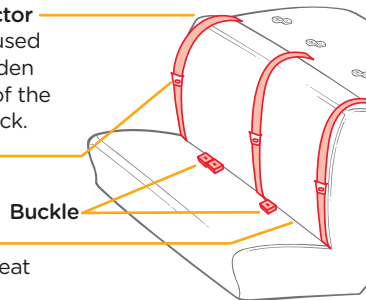
A device that winds up the unused vehicle seat belt. It is often hidden inside the panels on the walls of the vehicle or in the vehicle seatback.

#### Latch Plate

Metal tongue that inserts into the buckle.

#### Seat Bight

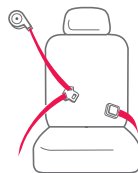
The crease where the vehicle seat back and seat bottom meet.



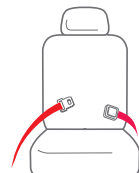
Review your vehicle owner's manual for exact location and use.

### Identify Your Seat Belt Type:

The vehicle seat belt types that can be used with this child restraint.

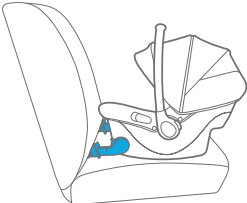
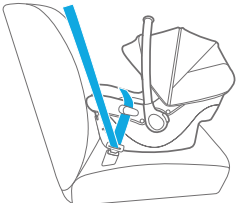
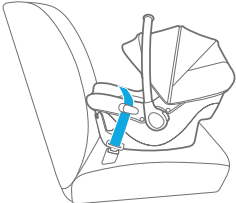


Lap/Shoulder Belt  
3 connection points



Lap Belt Only  
2 connection points

## Choose Your Installation:

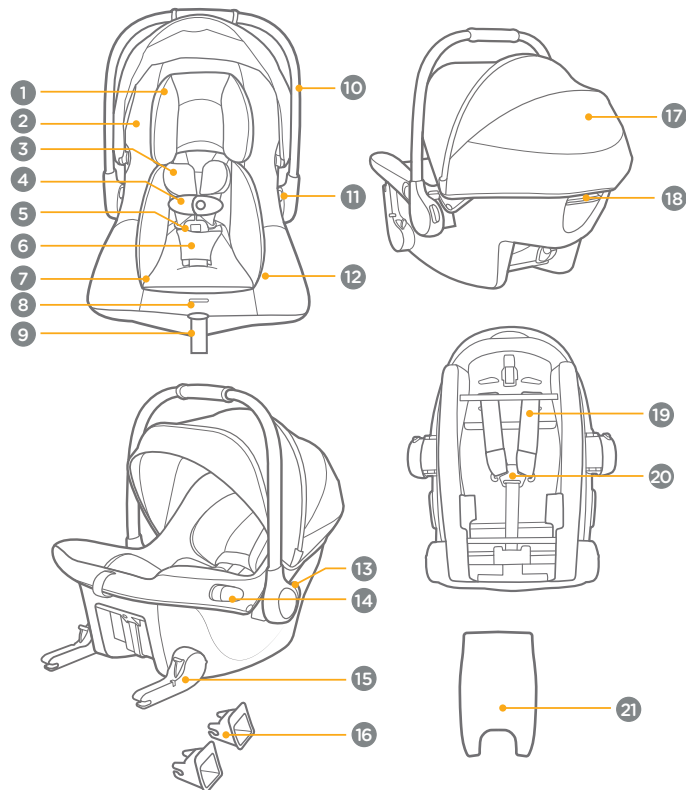
Installation Method	Suitable For
<p data-bbox="65 185 405 208">Rigid Lower Anchor Attachments</p> 	
<p data-bbox="65 448 264 471">Lap/Shoulder Belt</p> 	<p data-bbox="429 438 667 503">Height: <b>less than 76 cm (30 in.)</b></p> <p data-bbox="429 541 711 607">Weight: <b>1.8 - 13.6 kg (4-30 lb.)</b></p> <p data-bbox="429 645 711 731"><b>Children should ride rear-facing as long as possible.</b></p>
<p data-bbox="65 726 225 749">Lap Belt ONLY</p> 	

## Parts List:

Please make sure there are no missing parts. Please contact Joie Consumer Service if anything is missing.

- 1 Head Support
- 2 Seat Pad
- 3 Harness Pad (x2)
- 4 Chest Clip
- 5 Crotch Buckle
- 6 Crotch Pad
- 7 Infant Insert
- 8 Harness Adjustment Button
- 9 Harness Adjustment Strap
- 10 Handle
- 11 Stroller Adapter Release Button
- 12 Instruction Manual Pocket  
Store this instruction manual in the pocket located within the seat pad.
- 13 Handle Adjustment Button (x2)
- 14 Lap Belt Guide (x2)
- 15 Rigid Lower Anchor Attachment (x2)
- 16 Rigid Lower Anchor Attachment Guides (x2)
- 17 Canopy Window
- 18 Rigid Lower Anchor Attachment & Stroller Release
- 19 Shoulder Harness Straps
- 20 Harness Splitter Plate
- 21 Low Birth Weight Pillow  
(attached to the back of the infant insert)

## Parts List:



## Using Canopy:

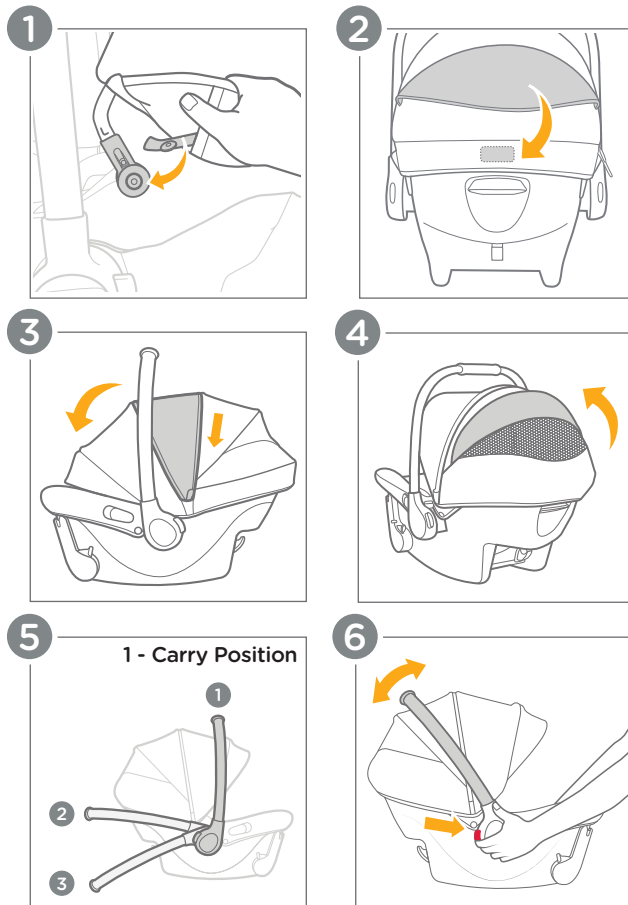
- 1 - Fasten the snap under the canopy fabric to the canopy hinge on both sides.
- 2 - Attach the hook and loop fasteners onto the canopy rear panel.
- 3 - Open the zipper on the canopy for extra shade. To close the zipper, close the canopy first and then close the zipper.
- 4 - For added ventilation, flip the canopy window cover up.

## Adjusting Handle:

- 5 - The handle can be adjusted to 3 positions.
- 6 - To adjust the handle position, squeeze the handle adjustment buttons on both sides and rotate the handle until it clicks into a locked position.

**WARNING:** Ensure that the handle is locked in the carry position before lifting the child restraint. An unlocked handle could move unexpectedly, causing injury to the child.

Joie recommends to have the handle in the carry position when in the vehicle. This allows space between front/rear seats and easier install/removal of the carrier.



---

## Checking Harness Height Fit:

---

For safety and comfort, ensure that the harness straps fit snugly on your child's shoulders and are positioned **AT** or **JUST BELOW** their shoulders.

1 - Have your child sit in the child restraint with the harness buckled. The shoulder straps **MUST** be **AT** or **JUST BELOW** the child's shoulders. If the shoulder straps are not **AT** or **JUST BELOW** the shoulders, adjust the harness height.

---

## Adjusting Harness Height:

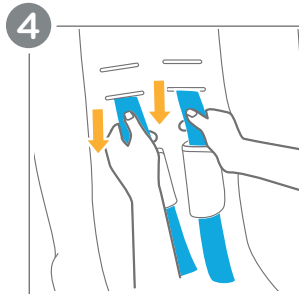
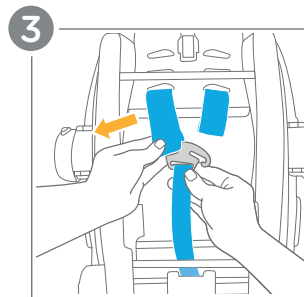
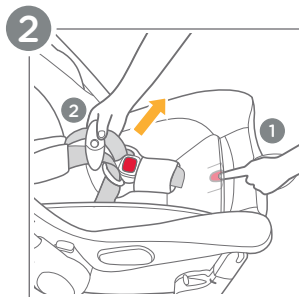
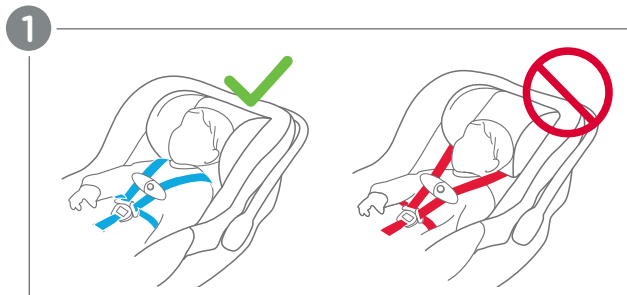
---

2 - Remove the child from the child restraint and loosen the harness straps by pressing the harness adjustment button (1) and pulling on the straps (2).

3 - Turn the child restraint over and locate the metal harness splitter plate where the shoulder straps come together. Carefully remove **BOTH** shoulder straps from the metal harness splitter plate.

4 - Turn the child restraint back over and pull **BOTH** shoulder straps out through the front of the child restraint.

(Adjusting Harness Height continued on pg. 28)



## Adjusting Harness Height: (cont.)

**5** - Re-thread the shoulder straps through the correct slots on the front of the child restraint.

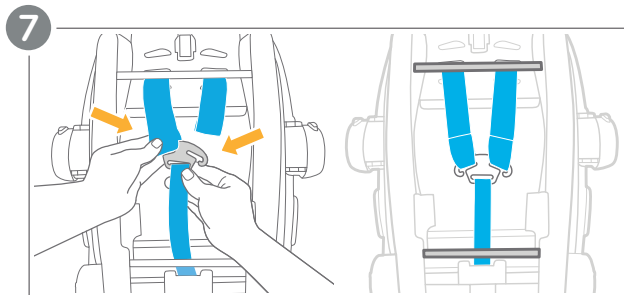
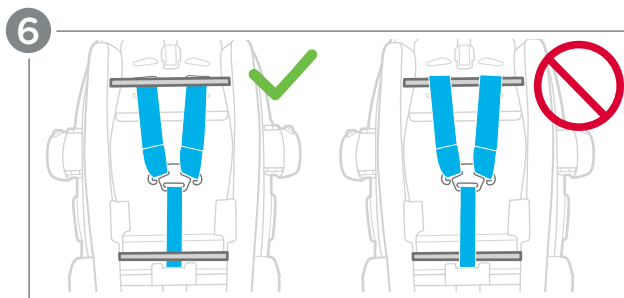
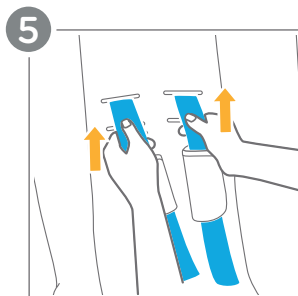
**6** - Ensure that the harness straps pass **UNDER** the cross bars.

**WARNING:** Ensure that the shoulder straps are not twisted before attaching to the splitter plate.

**7** - Once you've adjusted the shoulder straps to the desired height, re-attach **BOTH** shoulder strap loops into the metal harness splitter plate.

### Check the Final Fit:

Have your child sit back in the child restraint and repeat **Step 1 - Checking Harness Height Fit** to ensure the harness is snug and positioned correctly **AT** or **JUST BELOW** the shoulders.



---

## Removing Head Support:

---

The head support can be used as necessary, to provide a snug fit for small babies. It can be removed when your child has outgrown it.

**1** - Locate the head support straps behind the seat fabric. Carefully pull apart the hook and loop fastener to detach the head support.

Gently pull the head support upwards to remove it completely.

**WARNING:** The head support straps **CANNOT** go through the same slots as the harness straps and should only be used in the top two harness slot positions.

---

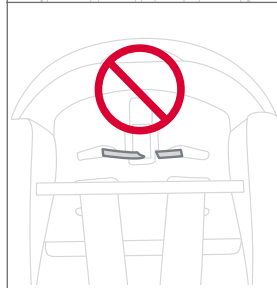
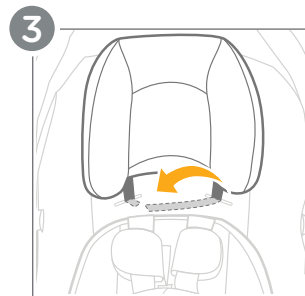
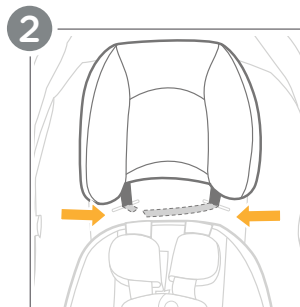
## Attaching Head Support:

---

**2** - Thread each head support strap through a harness slot in the softgoods. Ensure that both slots are at the same level. **DO NOT** thread the straps all the way through the seat shell.

**3** - Attach the hook and loop fasteners on the head support straps to each other.

**WARNING:** The head support straps **CANNOT** go through the same slots as the harness straps and should only be used in the top two harness slot positions.



The infant insert can be used as necessary, to provide a snug fit for babies under 5 kg (11 lb.).

The low birth weight pillow, attached to the infant insert, can be used for even smaller babies. It is best for babies under 3.6 kg (8 lb.).

## Removing Infant Insert:

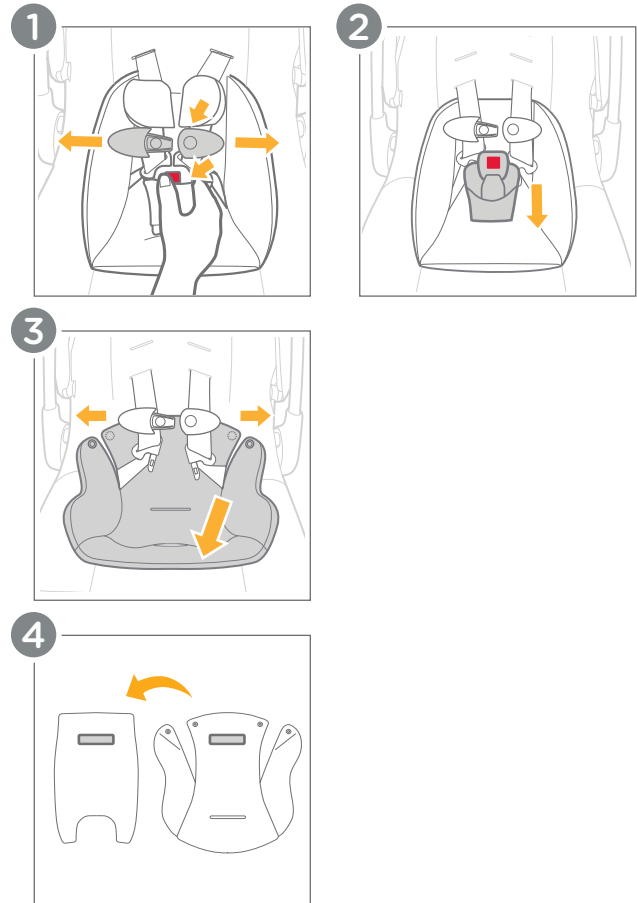
- 1 - Unbuckle the harness by pressing the release button on the crotch buckle.
- 2 - Thread the crotch strap through the slot of the infant insert.
- 3 - Unfasten the snaps near the top of the infant insert and gently pull the infant insert outward to remove it completely.

**IMPORTANT:** The infant insert can be used for smaller babies, but **MUST** be removed once the child reaches 5 kg (11 lb.).

## Removing Low Birth Weight Pillow:

- 4 - To remove the low birth weight pillow, detach the hook and loop fasteners from the infant insert.

**IMPORTANT:** The low birth weight pillow can be used from birth to 5 kg (11 lb.) and is best for infants under 3.6 kg (8 lb.).



## Install Using UAS Attachments:

### INSTALL USING ONLY ONE METHOD.

**NEVER** install using **BOTH** the seat belt and the UAS attachments. Only install in a forward facing vehicle seat.

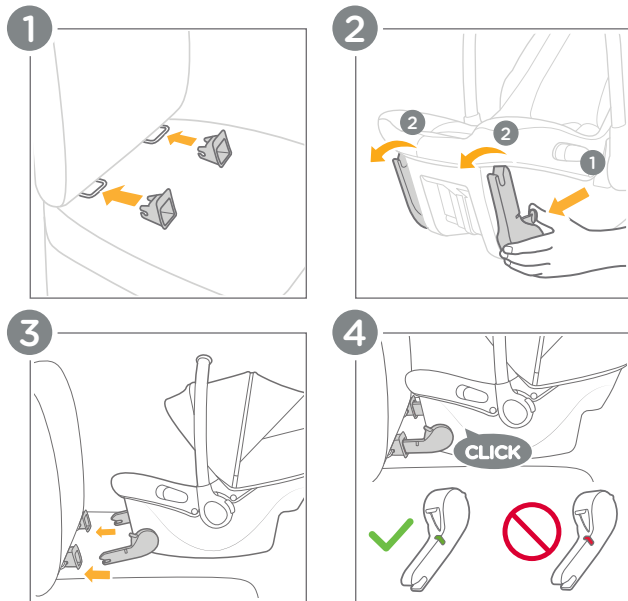
**1** - Insert the rigid lower anchor attachment guides to help with installation.

**2** - Press the rigid lower anchor attachment rotate button (1) on either side to turn the rigid lower anchor attachments down (2).

**3** - Line up the rigid lower anchor attachments with the rigid lower anchor attachment guides, and then attach both rigid lower anchor attachments onto the lower anchor points in your vehicle.

**4** - Listen for two audible **CLICKS**. The colors of the indicators on both rigid lower anchor attachments should be completely green. Check to ensure that the child restraint is securely installed by pulling on both rigid lower anchor attachments.

(Install Using UAS Attachments continued on pg. 36)



## Install Using UAS Attachments:

(cont.)

**5** - Ensure that the **LEVEL LINE** on the restraint label is **LEVEL WITH THE GROUND**. Rotate the rigid lower anchor attachments by pressing the rigid lower anchor attachment rotate button (1) to adjust the recline of the seat (2).

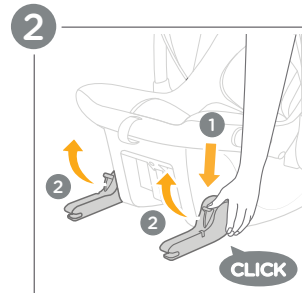
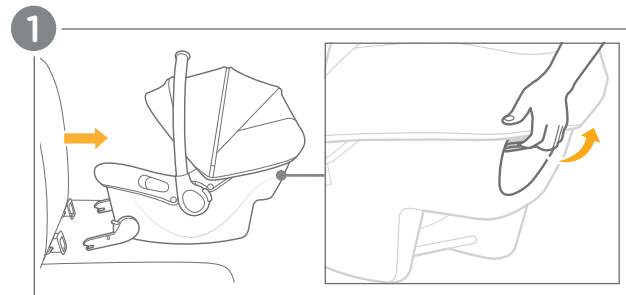
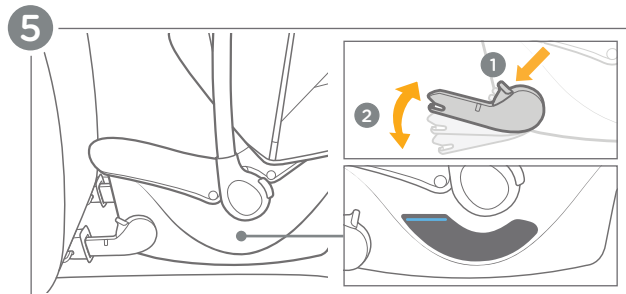
## Check Install!

- The blue level line must be level with the ground.
- The rigid lower anchor attachments are properly attached and show green on the indicators.
- The child restraint should be snug and **NOT MOVE** in any direction more than 2.5 cm (1 in.) at the belt path.

## Detaching UAS Attachments:

**1** - To remove the child restraint, squeeze the lower anchor attachment release lever on the back of the infant carrier and pull the child restraint away from the lower anchor points.

**2** - Press the UAS attachment rotate buttons to fold the rigid lower anchor attachments back to the storage position. Remove the child restraint from the vehicle.



---

## Install Using Lap/Shoulder Belt:

---

### INSTALL USING ONLY ONE METHOD.

**NEVER** install using **BOTH** the seat belt and the UAS attachments. Only install in a forward facing vehicle seat.

- 1 - Place the child restraint in the vehicle facing the back of the car.
- 2 - Thread your vehicle's lap belt under **BOTH** lap belt guides.
- 3 - Ensure that the **LEVEL LINE** on the restraint label is **LEVEL WITH THE GROUND**. A rolled-up towel or pool noodle may be used to adjust the recline of the child restraint.
- 4 - Press firmly into the middle of the child restraint while pulling the vehicle's shoulder belt to tighten.

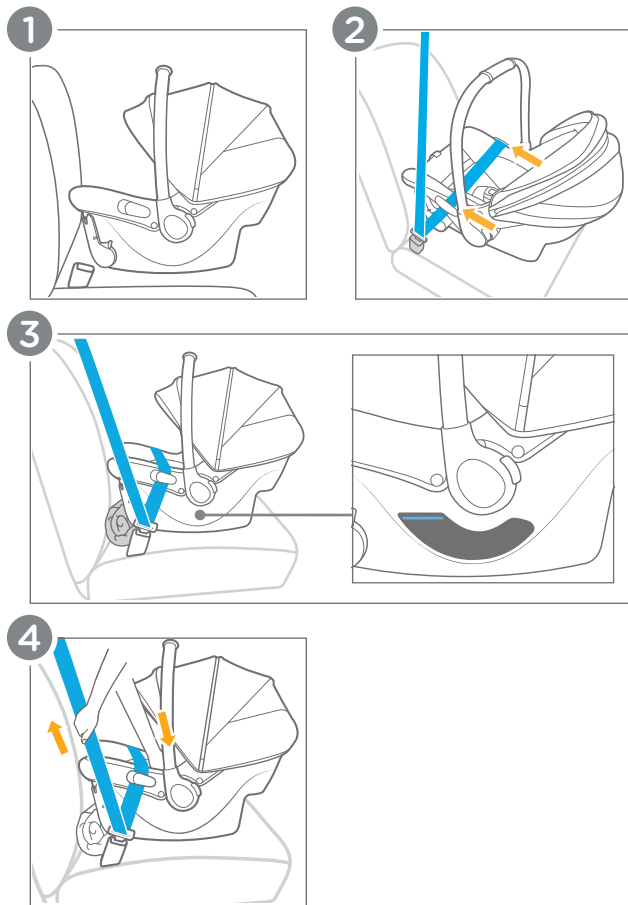
Lock the lap/shoulder belt using your car's locking mechanism (check your vehicle owner's manual). If your vehicle seat belt doesn't lock, use a locking clip.

---

## Check Install!

---

- The blue level line must be level with the ground.
- The vehicle belt is buckled and is as tight as possible around the child restraint. The vehicle belt is not loose or twisted.
- The child restraint should be snug and **NOT MOVE** in any direction more than 2.5 cm (1 in.) at the belt path.



---

## Install Using Lap Belt ONLY:

---

### INSTALL USING ONLY ONE METHOD.

**NEVER** install using **BOTH** the seat belt and the UAS attachments. Only install in a forward facing vehicle seat.

**1** - Place the child restraint in the vehicle facing the back of the car.

**2** - Thread your vehicle's lap belt under **BOTH** lap belt guides.

**3** - Ensure that the **LEVEL LINE** on the restraint label is **LEVEL WITH THE GROUND**. A rolled-up towel or pool noodle may be used to adjust the recline of the child restraint.

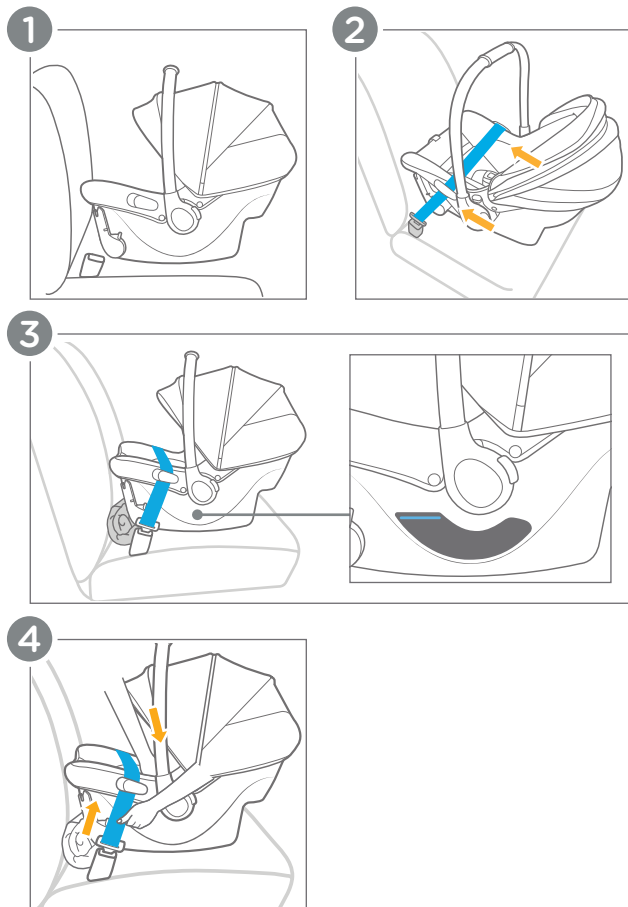
**4** - Press firmly into the middle of the child restraint while pulling the vehicle's lap belt to tighten.

---

## Check Install!

---

- The blue level line must be level with the ground.
- The vehicle belt is buckled and is as tight as possible around the child restraint. The vehicle belt is not loose or twisted.
- The child restraint should be snug and **NOT MOVE** in any direction more than 2.5 cm (1 in.) at the belt path.



---

## Install in an Aircraft:

---

This child restraint is certified for airplane use. Contact your airline about their policy before traveling.

**1** - Place the child restraint in the seat facing the back of the aircraft.

**2** - Thread your aircraft lap belt under BOTH lap belt guides.

**3** - Ensure that the **LEVEL LINE** on the restraint label is **LEVEL WITH THE FLOOR OF THE AIRCRAFT**. A rolled-up towel or pool noodle may be used to adjust the recline of the child restraint.

**4** - Press firmly into the middle of the child restraint while pulling the aircraft's lap belt strap to tighten.

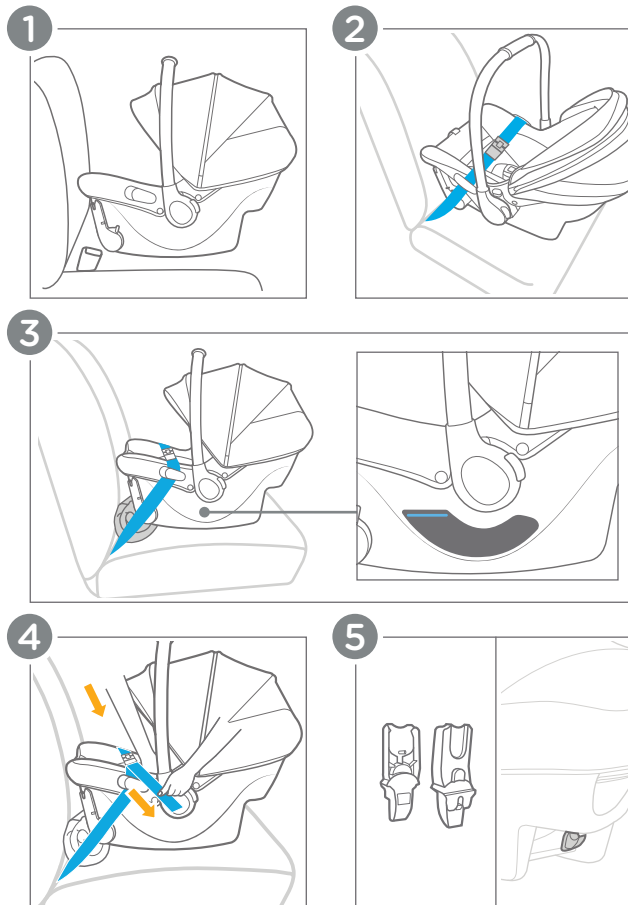
---

## Accessories:

---

**5** - The infant carrier can attach to Joie strollers using adapters or with the stroller's armband. Adapters are included with Joie strollers.

Visit [www.joiebaby.com](http://www.joiebaby.com) for more information.



## Securing Child in Seat:

**1** - The top of the child's head must be at least 1 in. (2.5 cm) below the top of the child restraint.

**2** - Loosen the harness straps by pressing the harness adjustment button (1) and pulling on the straps (2).

**3** - Press the chest clip button to release the chest clip and pull the two halves apart.

**4** - Press the button on the crotch buckle, remove the buckle tongues, and spread the harness straps apart. Place your child in the child restraint.

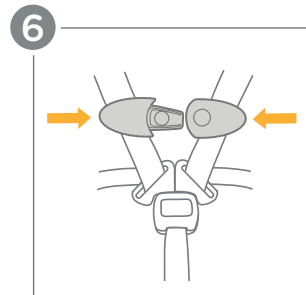
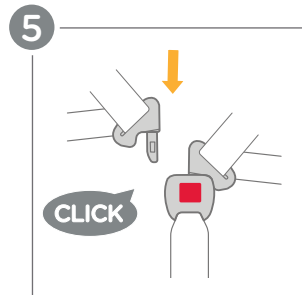
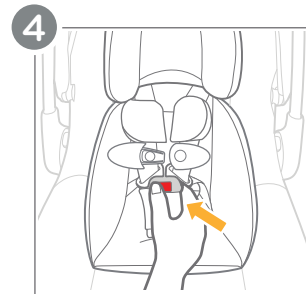
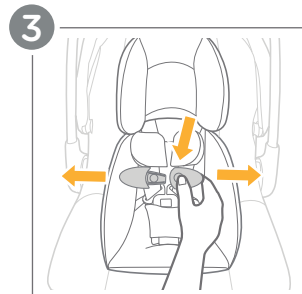
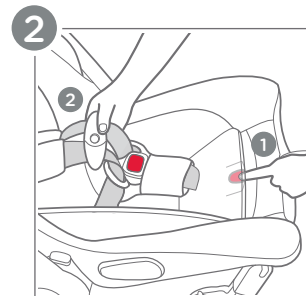
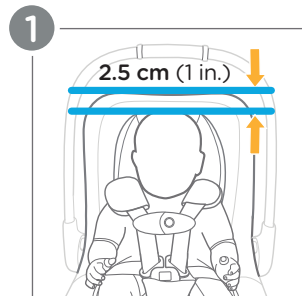
**IMPORTANT:** The child must be in a seated position against both the back and bottom of the seat with no gap behind the child. **DO NOT** allow the child to slouch.

The harness straps **MUST** be **AT** or **JUST BELOW** the child's shoulders to avoid injury.

**5** - Gently guide the child's arms through the shoulder straps. Insert the buckle tongues into the crotch buckle. Listen for a **CLICK**. Pull on the crotch buckle to ensure that it is properly latched.


**6** - Snap the chest clip together. Listen for a **CLICK**. Temporarily slide it towards the crotch buckle for tightening of the harness straps.

(Securing Child in Seat continued on pg. 46)



## Securing Child in Seat: (cont.)

**7** - Pull on the adjustment strap to tighten the harness. Slide any excess strap length from the child's waist up through the crotch buckle towards the shoulders, and repeat this step until the harness is snug on the child.

 The harness should be snug around your child's waist and shoulders. It may take a few adjustments, so be patient!

**8** - Without pressing the harness adjustment button, pull forward firmly on the harness straps at the shoulder. If the straps loosen, clean the harness adjustment button and strap (see pg. 53).

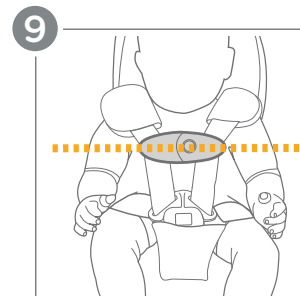
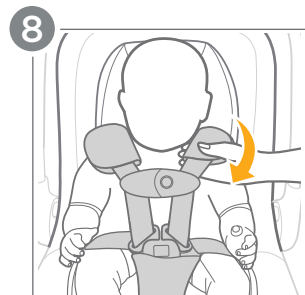
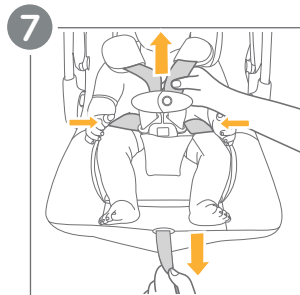
**9** - Position the chest clip at the child's armpit level.

## Check Setup!

**The harness is snug** - a snug harness cannot be pinched vertically at the collarbone area, and should not allow any slack. If the harness straps are not snugly adjusted, the child may be ejected from the seat in the event of a crash.

**IMPORTANT:** A snug strap should not allow any slack. It lies in a relatively straight line without sagging. It does not press on the child's flesh or push the child's body into an unnatural position.

- The chest clip and crotch buckle are secured properly.**
- The chest clip is at the child's armpit level.**
- The child's head is at least 2.5 cm (1 in.) below the top of the headrest.**
- The shoulder straps are AT or JUST BELOW the child's shoulders.**



**WARNING!** Ensure that nothing interferes with the harness. Ensure that the harness straps are snug around the child and lay flat.

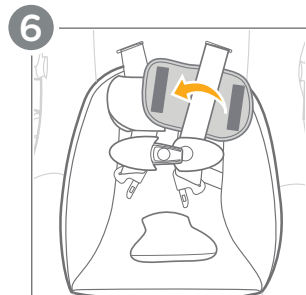
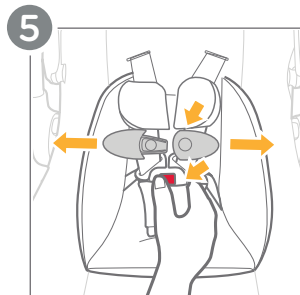
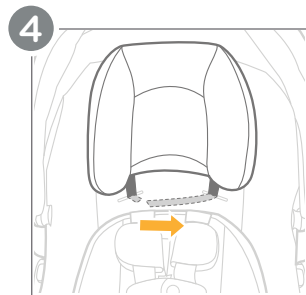
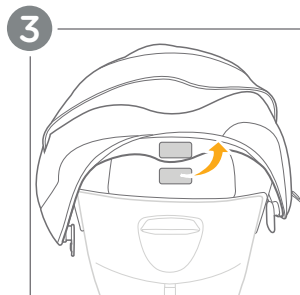
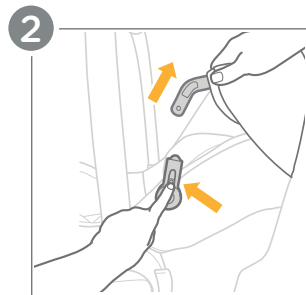
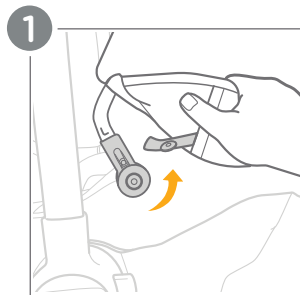
Serious injury or death could occur to a child that is not secured properly. If the child is not secured properly, the child could be ejected in a sudden stop or crash, resulting in serious injury or death.

## Removing Canopy/Fabric:

**WARNING!** NEVER use this child restraint without the softgoods in place.

- 1 - Unfasten the snap under the canopy fabric from the canopy hinge on both sides.
- 2 - Press the round plastic tab on the canopy support, then pull it upwards to disconnect it from the canopy hinge.
- 3 - Carefully pull apart the hook and loop closure at the back top of the seat.
- 4 - Refer to removing the head support on [pg. 30](#).
- 5 - Unbuckle the crotch buckle and chest clip.
- 6 - Unfasten and remove the harness pads.

(Removing Canopy/Fabric continued on [pg. 50](#))




## Removing Canopy/Fabric: (cont.)

**7** - Remove the crotch pad, then thread the crotch buckle and belt through the bottom slot of both the infant insert and seat pad.

**8** - Remove the infant insert by unsnapping the sides and pulling gently to remove it.

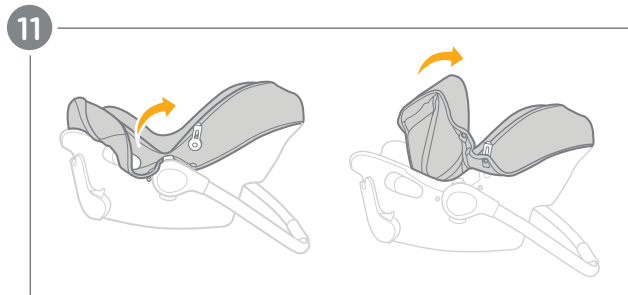
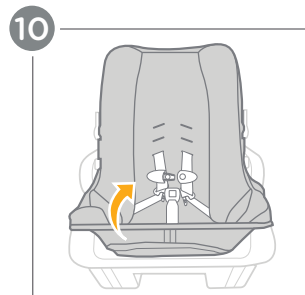
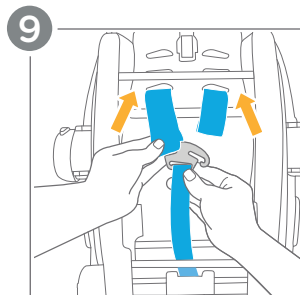
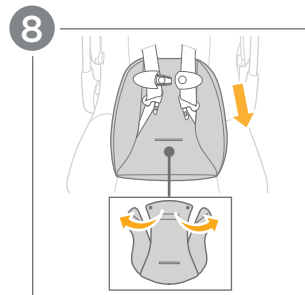
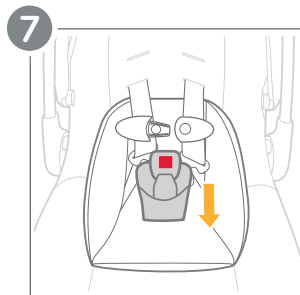
**9** - Turn the child restraint over and locate the metal harness splitter plate where the shoulder straps come together. Carefully remove **BOTH** shoulder straps from the metal harness splitter plate.

 Fully loosen the harness straps to easily access the splitter plate.

**10** - Starting from the bottom, lift the seat pad to remove it from the child restraint shell.

**11** - Carefully slide the lap belt guides through the opening in the fabric. Continue lifting the seat pad until it's completely removed.

**To re-assemble, follow these steps in reverse order.**



---

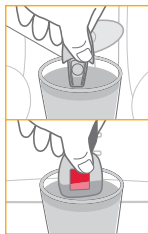
## Care and Maintenance:

---

**Washing the Seat Pads:** Refer to the care label attached to the fabrics for washing and drying instructions. **DO NOT** attempt to remove the foam or tape from under the seat pad.

**Cleaning the Seat Shell and Foams:** Use only mild detergent, water, and a soft cloth to clean the shell, base, and foams. Air dry after cleaning. **NEVER** use bleach or any other harsh chemicals anywhere on the child restraint.

**Cleaning the Buckle, Chest Clip, Harness, and LATCH straps:** Hand rinse the buckle and chest clip using warm water only. **DO NOT** use soaps, solvents, or lubricants. These can cause malfunctions. Air dry the buckle and chest clip. Use a damp soft cloth and mild detergent to hand wipe the harness and LATCH straps clean. **DO NOT** submerge or saturate the harness or LATCH straps. Doing so may compromise the safety of the straps.



**Storage:** When not in use for a long period, remove the child restraint from the vehicle seat. Store the child restraint in a cool, dry place that your child does not have access to.

**Normal Wear and Tear:** It is normal for the fabric to fade from sunlight and show wear and tear over time even when used normally.

**Regular Checks:** Regularly check that everything functions properly. If any parts are torn, broken, or missing stop using immediately and contact Joie for replacement parts.

---

## Care and Maintenance:

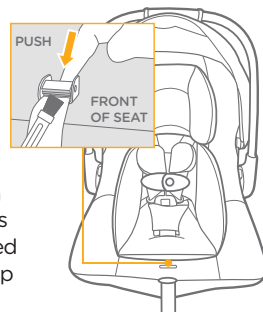
---

### Keeping Your Harness Adjustment Button & Strap Clean:

A clean harness adjustment button and strap are key to a properly functioning harness. Regularly check the button and strap for dirt and debris, and clean them as needed.

#### Cleaning Steps:

- 1. Expose the button:** Remove the softgoods (fabric) from the front of the car seat to access the harness adjustment button.
- 2. Open the mechanism:** Push down on the lever on the back of the button. This will expose the small teeth and any trapped debris. Pull the harness adjustment strap out slightly to help loosen debris.
- 3. Clean the button and strap:** Use a soft, nylon-bristled brush to remove any dirt or debris. For stubborn debris or residue, you can use a vacuum cleaner, a damp cloth, or a flat, plastic edged tool to scrape. **NEVER** use a sharp or metal tool.
- 4. Test and reassemble:** Test the harness to ensure it's working correctly. Reattach the softgoods to the seat and then test again.



#### Important:

**DO NOT** use harsh cleaning chemicals.

**DO NOT** saturate the harness adjustment strap with liquids.

---

### Joie Bébé Canada Consumer Service Contact Info.

**Address:** PO Box 96528 RPO Brunswick,  
Kirkland, Quebec H9H 5L4

**Email:** info.us@joiebaby.com **Phone:** 1-866-798-7866

**Joie™**

**Effortlessly happy.**

Helping parents be their best  
with worry-free baby gear.