

Joie™

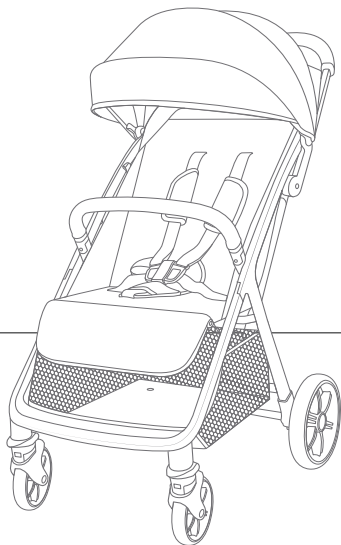
Instruction Manual

nutmeg™

compact travel stroller

birth up to 50 lb. (22.7 kg)

birth up to 45 in. (114.3 cm)



product
guide videos



IMPORTANT!

Read all instructions before assembling and using the stroller.
Keep instructions for future use.

Contents:

- 3 Warranty Information
- 4 Warnings
- 8 Parts List
- 10 Opening Stroller
- 12 Attaching & Detaching Front Wheels
- 14 Attaching & Detaching Rear Wheels
- 16 Attaching & Detaching Cup Holder
- 18 Attaching & Detaching Arm Bar
- 20 Securing Your Child
- 26 Adjusting Recline
- 28 Adjusting Calf Support
- 30 Using Front Swivel Locks
- 30 Using Brake
- 32 Using Canopy
- 34 Removing Harness Covers
- 34 Folding Stroller
- 36 Using Accessories
- 40 Using Carry Bag
- 42 Care & Maintenance

Child Usage Requirements

This stroller is suitable for use with children who meet the following requirements:

Weight: birth up to 50 lb. (22.7 kg)

Height: birth up to 45 in. (114.3 cm)

Warranty Information:

Product Registration

Please fill in the information below. The model number and the date of manufacture are located on a label on the stroller frame. Fill out the prepaid registration postcard attached to the product and mail it today. To register your product online, please visit: <https://joiebaby.com/us/register-gear>.

Model Name: _____

Model Number: _____

Date of Manufacture: _____

Date of Purchase: _____

register your
product online



Limited Warranty

We have purposely designed our high-quality products so that they can grow with both your child and your family. Because we stand by our product, our gear is covered by a custom limited warranty per product, starting from the day it was purchased. Please have the proof of purchase, model number and date of manufacture available when you contact us. For warranty information please visit: www.joiebaby.com.

Contact

In the USA:

Joie Baby USA Consumer Service Contact Info.

Address: 70 Thousand Oaks Blvd., Morgantown, PA 19543

In Canada:

Joie Bébé Canada Consumer Service Contact Info.

Address: PO Box 96528 RPO Brunswick, Kirkland, Quebec H9H 5L4

Email: info.us@joiebaby.com

Phone: 1-866-798-7866

WARNING

Failure to follow these warnings and instructions could result in serious injury or death.

- **NEVER** leave child unattended.
- **Choking Hazard:** Keep small parts away from children. These components may pose a choking hazard.
- **Suffocation Risk:** Remove all plastic covers before using the stroller. Destroy these covers or keep them completely out of reach of babies and children.
- **Broken Stroller:** If the stroller becomes damaged or broken, stop using it immediately. A damaged stroller can be unsafe.
- **Modification Warning:** **DO NOT** modify the stroller in any way unless specified in the manual. Unauthorized changes can compromise safety.
- **Genuine Parts Only:** Use only genuine parts and accessories from Joie.
- **Overloading, incorrect folding, and using accessories other than those approved by Joie,** e.g. child seats, bag hooks, rain covers, buggy boards, etc., may damage or make the stroller unsafe.

WARNING

Failure to follow these warnings and instructions could result in serious injury or death.

- **Weight & Height Limits:** This stroller is only suitable for children up to 50 lb. (22.7 kg) and 45 in. (114.3 cm) tall. Exceeding these limits can cause wear and tear, potentially leading to an unstable stroller.
- **Single Child Use:** This stroller is designed for one child only. **NEVER** transport more than one child at a time.
- **To prevent a hazardous, unstable condition, DO NOT** place more than 10 lb. (4.5 kg) in the storage basket and **NEVER** place purses, shopping bags, parcels, or other items on the handle or canopy.
- **DO NOT** use the storage basket as a child carrier.
- **Avoid serious injury from falling or sliding out.** **ALWAYS** use the harness. After fastening the buckles, adjust the harness straps to get a snug fit around your child.
- **Avoid Finger Entrapment:** Use care when folding and unfolding the stroller. Ensure the stroller is fully erected and locked before allowing your child near the stroller.

WARNING

Failure to follow these warnings and instructions could result in serious injury or death.

- **Strangulation Hazard: DO NOT** place items with a string around your child's neck, suspend strings from the stroller, or attach strings to toys.
- **DO NOT** let your child play with the stroller.
- **ALWAYS** keep your child in view while in the stroller.
- **NEVER** allow your child to stand on the stroller.
- **The brake MUST be engaged** when the stroller is stopped and when placing and removing child.
- **Negotiate curbs and rough ground carefully.** Repeated impact could cause damage to the stroller.
- **The stroller is to be used only at walking speed** and is not intended for use while jogging, skating, etc.
- **NEVER** use the stroller on stairs or escalators. You may suddenly lose control of the stroller or your child may fall out.
- **The stroller does not replace a crib or a bed.** Should your child need to sleep, they should be placed in a crib or sleeping area based on your child's requirements.

WARNING

Failure to follow these warnings and instructions could result in serious injury or death.

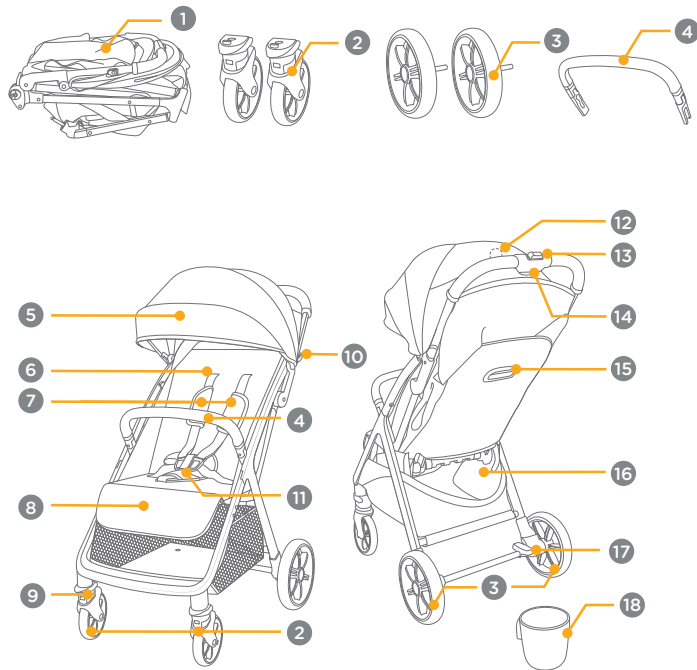
- **ALWAYS** allow the fabric to dry naturally away from direct heat.
- **DO NOT** leave the stroller exposed near a strong source of heat, i.e. a radiator or open fire, or store the stroller in a damp place.
- **To avoid burns, NEVER** put hot liquids in your cup holder.
- **To prevent a hazardous, unstable condition, DO NOT** place more than 1 lb. (0.5 kg) in the cup holder.
- **When using the stroller frame with a Joie car seat,** refer to the child usage requirements listed in the car seat instruction manual.
- **Child may slip into leg openings and strangle. NEVER** use in a reclined carriage position unless the calf support is raised to cover the front opening and the fabric flaps are snapped to the side of the stroller seat.

Parts List:

Please make sure there are no missing parts. Please contact Joie Consumer Service if anything is missing.

- 1 Stroller Frame
- 2 Front Wheels
- 3 Rear Wheels
- 4 Arm Bar
- 5 Canopy
- 6 Harness Straps
- 7 Shoulder Harness Covers
- 8 Calf Support
- 9 Front Swivel Lock (x2)
- 10 Infant Car Seat Lock
- 11 Restraint Buckle
- 12 Tracking Device Pocket
- 13 Secondary Lock
- 14 One-Hand-Fold Button
- 15 Recline Handle
- 16 Storage Basket
- 17 Brake Lever
- 18 Cup Holder

Parts List:



Opening Stroller:

1 - Take the Stroller Frame Out.

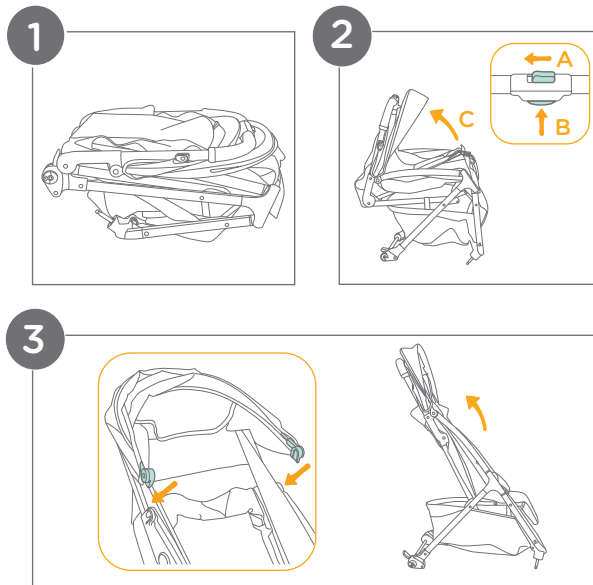
2 - Unfold the Stroller Frame:

Locate the secondary lock (A) on the handle. Slide it along the handle. Squeeze the one-hand-fold button (B) while holding the secondary lock in place. Rotate the handle upwards (C) until the stroller is fully open.

3 - Secure the Canopy:

Slide the canopy mounts onto the mount tabs on the stroller frame.

IMPORTANT: Safety Check: Before using the stroller, **ALWAYS** ensure all latches are securely closed and locked.



Attaching & Detaching Front Wheels:

1 - Attaching the Front Wheels:

Insert the front wheels into the designated slots on the front legs of the stroller frame.

A “clicking” sound will confirm that the wheels are properly locked in place.

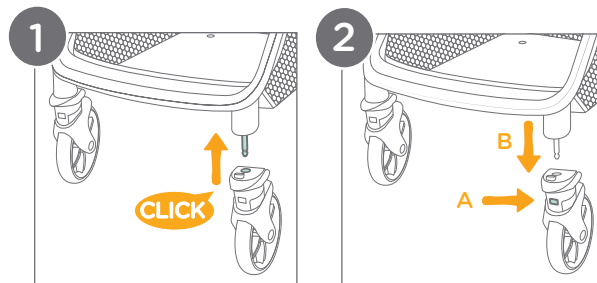
IMPORTANT: Safety Check: ALWAYS pull on the wheels after attachment to ensure that they are securely fastened.

2 - Detaching the Front Wheels:

Find the release button (A) on the front wheel assembly.

Press the release button while holding the wheel.

Pull the wheel straight out from the front leg (B) to detach it.



Attaching & Detaching Rear Wheels:

1 - Attaching the Rear Wheels:

Insert the rear wheels into the designated slots on the rear legs of the stroller frame.

A “clicking” sound will indicate that the wheels are properly locked in place.

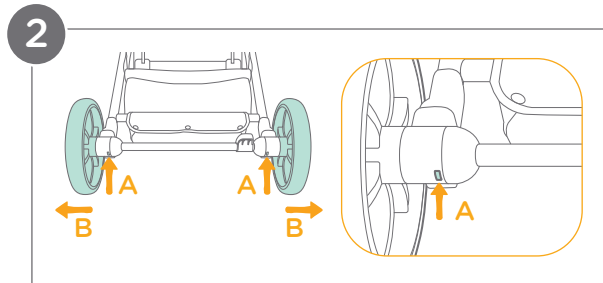
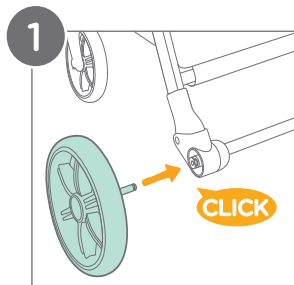
IMPORTANT: Safety Check: ALWAYS pull on the wheels after attachment to ensure that they are securely fastened.

2 - Detaching the Rear Wheels:

Find the release button (A) on the rear wheel assembly.

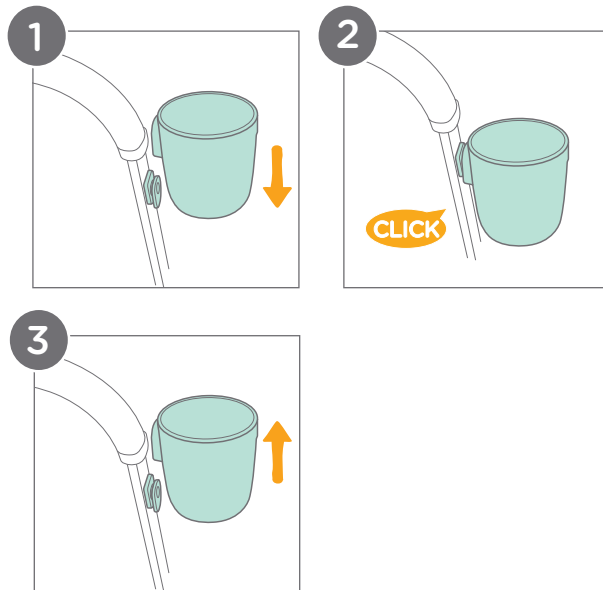
Press the release button while holding the wheel.

Pull the wheel straight out from the rear leg (B) to detach it.



Attaching & Detaching Cup Holder:

- 1 - To attach, align the cup holder with the designated mount on the stroller frame. Slide the clip on the cup holder downward until it snaps over the mount.
- 2 - A “clicking” sound will indicate that the cup holder is properly locked in place.
- 3 - To detach the cup holder, pull upward to slide it off of the mount.



Attaching & Detaching Arm Bar:

IMPORTANT: The arm bar is not a substitute for the harness. **ALWAYS** secure your child with the harness for proper restraint.

1 - Attaching the Arm Bar:

Align the ends of the arm bar with the designated arm bar mounts on the stroller frame.

Push the arm bar until it clicks into place.

A “clicking” sound will indicate that the arm bar is properly locked in place.

2 - Removing the Arm Bar:

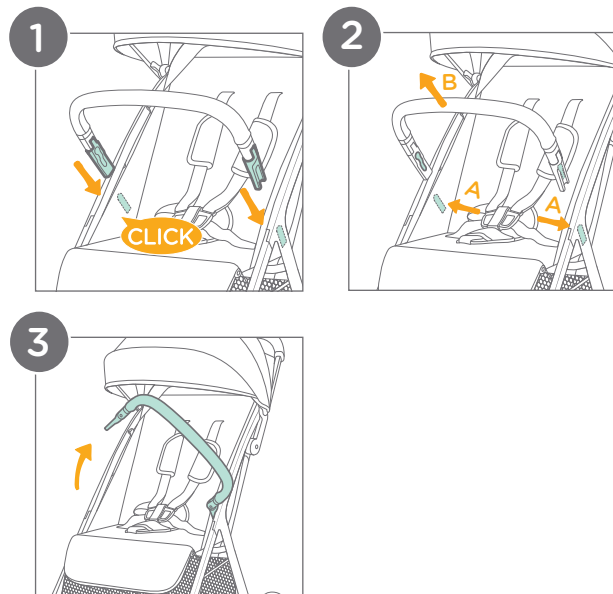
Find the arm bar release buttons on the inner arm bar. Press both arm bar release buttons simultaneously (A).

Pull the arm bar outward (B) to detach it from the stroller frame.

3 - Rotating the Arm Bar:

Locate the arm bar release button on either inner side of the arm bar.

While pressing the release button, rotate the arm bar.



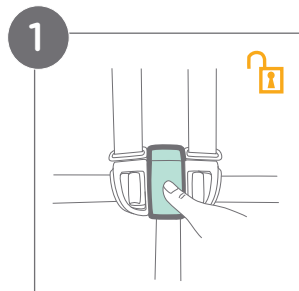
Securing Your Child:

IMPORTANT: ALWAYS engage the brake: This is crucial whenever the stroller is stopped, especially when placing or removing your child. A parked stroller with a disengaged brake can roll away, posing a serious fall hazard.

Secure your child with the harness: NEVER leave your child unbuckled in the stroller. A secure harness is essential to prevent them from falling or sliding out.

Proper harness adjustment: Ensure that the harness straps are snug but comfortable.

Shoulder strap positioning: NEVER cross the shoulder straps. **ALWAYS** keep them straight over your child's shoulders to avoid putting pressure on their neck.



1 - Releasing the Restraint Buckle:

Locate the button in the center of the restraint buckle and press it firmly to release the harness straps.

2 - Locking the Restraint Buckle:

Slide the shoulder harness buckle into the waist belt buckle (A). Insert the combined buckles into the center buckle (B). A “clicking” sound will confirm that the restraint buckle is properly locked in place (C).

IMPORTANT: ALWAYS secure your child with the harness.

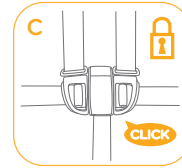
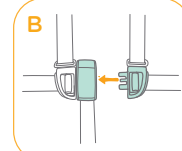
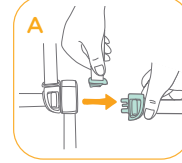
The arm bar is not a restraint and cannot prevent falls.

DO NOT lift the stroller by the arm bar. This can cause damage or injury.

Use care when snapping the arm bar on the stroller with a child in the stroller.

CAREGIVER MUST ALWAYS help child get into and out of the stroller.

2

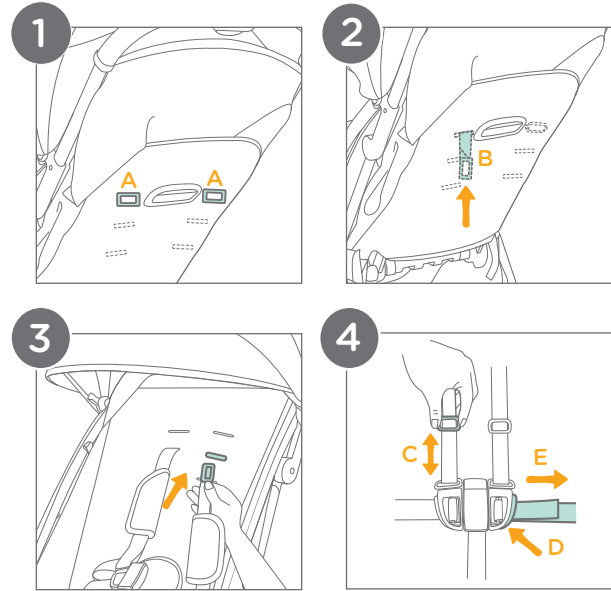


Shoulder Harness Height Adjustment:

- 1 - Locate the shoulder harness anchors (A) on back of seat.
- 2 - Turn the harness anchor to be in line with the harness strap. Thread it through the shoulder harness slot from back to front.
- 3 - Rethread the harness anchor through the correct slot from front to back. Ensure that both sides are adjusted to slots at the same height.
- 4 - Use the slide adjuster (C) to adjust the length of the shoulder harness straps. Pull the waist harness strap (D) to tighten the waist harness. Press the button (E) on the waist belt buckle to loosen the waist harness strap (D).

IMPORTANT: DO NOT adjust the shoulder harness height with a child in the stroller.

Shoulder harness height should be at or slightly above the child's shoulders.



Adjusting Recline:

1 - Reclining the Backrest:

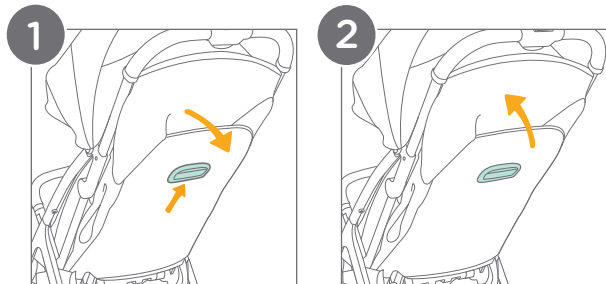
Locate the recline handle. Squeeze the recline handle while gently pulling the backrest downward to your desired reclining position.

2 - Raising the Backrest:

To raise the backrest, simply push it upwards until it reaches the desired position.

IMPORTANT: ALWAYS ensure that the backrest is securely locked in place before placing your child in the stroller.

Seat Adjustments: When making adjustments to the stroller seat, make sure your child's head, arms, and legs are clear of moving seat parts and stroller frame to prevent injury.



Adjusting Calf Support:

1 - Raising the Support:

Lift the 3-position calf support upwards. A “clicking” sound will indicate that it is properly locked in place.

2 - Lowering the Support:

Find the adjustment buttons on both sides of the calf support (A) and press both buttons simultaneously.

While holding the buttons pressed, gently rotate the calf support downwards (B) to your desired position.

3 - Fully Reclining the Stroller Seat:

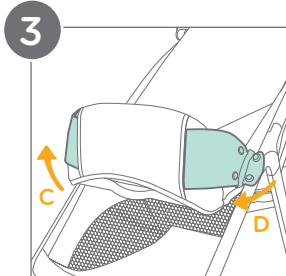
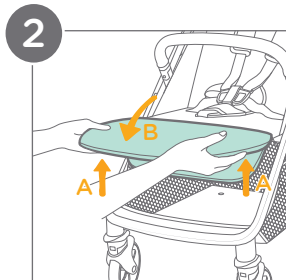
When using the stroller in full recline, the calf support must be fully raised (C) and the closure flaps attached.

When fully reclined, pull the closure flaps located at the bottom of the calf support outwards.

Locate the fabric loops on the side of the seat and pass the closure flaps through the loops.


Fasten the closure flaps securely to the corresponding snaps on the outside of the seat (D).

WARNING: The arm bar needs to be removed when the stroller is fully reclined. See pg. 18 for removal instructions.



Using Front Swivel Locks:

- 1 - Push the front swivel locks upwards to fix the wheels in a straight position. This will prevent them from swiveling freely. Push the locks back down to release them.

 Using the front swivel locks is recommended when traveling on uneven surfaces.

Using Brake:

2 - Locking the Brake:

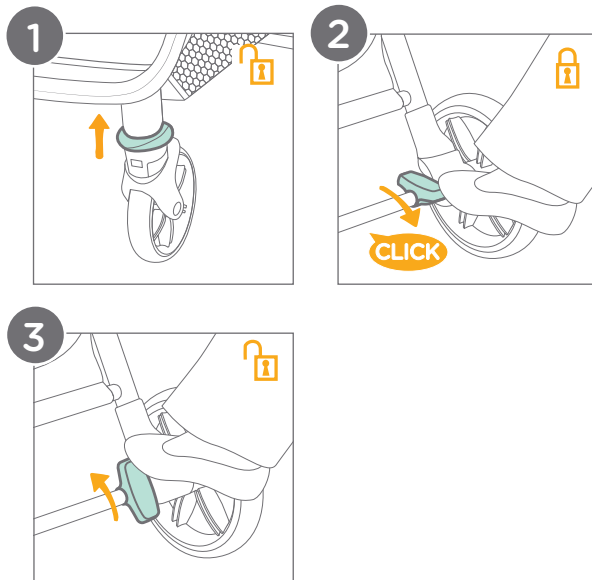
Step firmly on the brake lever and rotate the lever down. A “clicking” sound will indicate that the brake is properly locked in place.

3 - Unlocking the Brake:

Rotate the brake lever forward with your foot. The lever will return to its original position, and the wheels should move freely.

WARNING: ALWAYS apply the brake whenever the stroller is stopped.

Gently push the stroller to ensure the brake is securely engaged.



Using Canopy:


1 - Opening and Closing the Canopy:

To open, pull the canopy forward towards the front of the seat. To close, push the canopy back until it reaches the desired position.

- 2 - For extended canopy coverage, unzip the canopy zipper (A) and pull the canopy fully forward (B).

Ventilation:

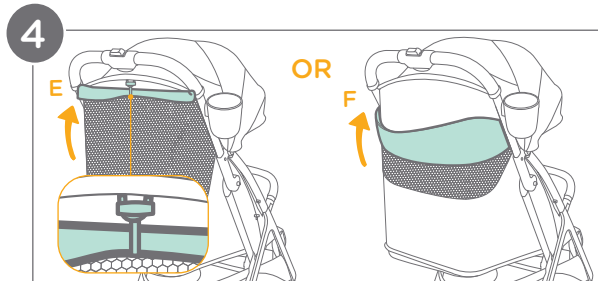
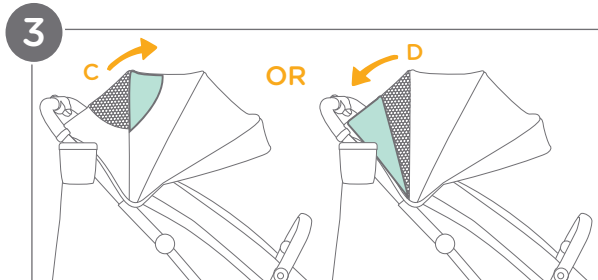
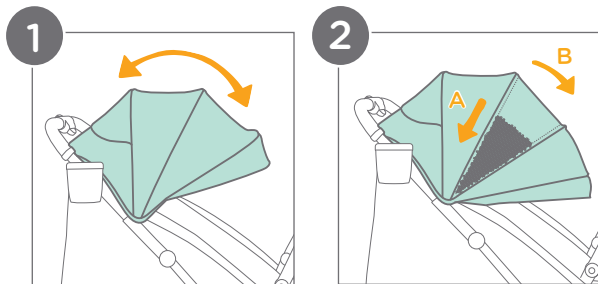
- 3 - For airflow, flip open the canopy window cover on the top of the stroller. Depending on your stroller model, the canopy window cover may look like drawing C or D.

 A tracking device may be added to the pocket inside the top canopy window cover.

- 4 - For additional airflow, roll up the canopy window cover on the back of the stroller.

Depending on your stroller model, the canopy window cover may look like drawing E or F.

For drawing E, keep the fabric in place by putting the toggle through the fabric loop.



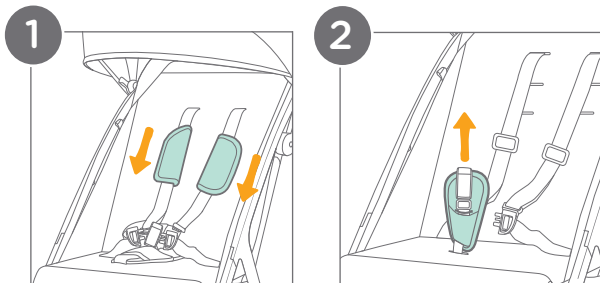
Removing Harness Covers:

1 - Removing the Shoulder Harness Covers:

Unbuckle the harness straps and slide the shoulder harness buckle out of the waist buckle. Slide the harness covers off of the straps by pulling them down over the waist buckle.

2 - Removing the Crotch Harness Cover:

Unbuckle the harness straps. Lift the cover up to remove it.



Folding Stroller:

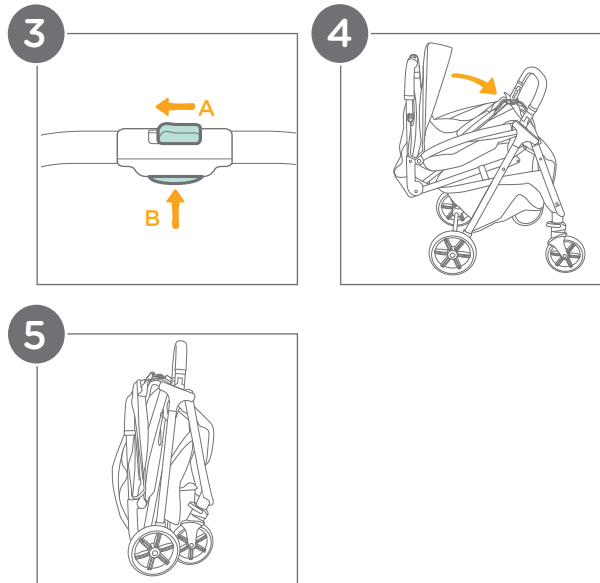
IMPORTANT: ALWAYS close the canopy before folding the stroller. This prevents damage to the canopy fabric.

Ensure that the snaps on each side of the calf support are unfastened before folding the stroller.

Ensure that the front swivel locks are released before folding the stroller. See pg. 30 for front swivel lock details.

Folding the Stroller:

- 3 - Slide the secondary lock (A). Squeeze the one-hand-fold button (B) while holding the secondary lock (A) in place.
- 4 - Gently push the stroller forward to initiate the folding mechanism.
- 5 - The stroller frame will fold and automatically lock into an upright position.



Using Accessories

IMPORTANT: ALWAYS adjust the backrest to the lowest position and collapse the canopy before attaching the car seat.

NEVER fold the stroller with the car seat attached. ALWAYS remove the car seat first.

1 - Engaging the Infant Car Seat Lock:

Find the infant car seat lock located near the base of the stroller handle. Engage the infant car seat lock by sliding its rotating part towards the inside of the stroller.

2 - Attaching a Joie Infant Car Seat:

Insert the infant car seat onto the stroller frame (A), **OVER** the arm bar, and **UNDER** the engaged infant car seat lock (B).

A “clicking” sound will indicate that the car seat is properly locked in place.

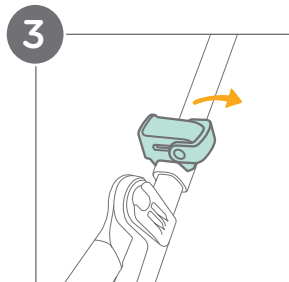
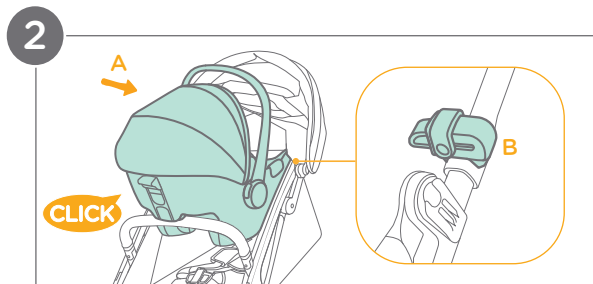
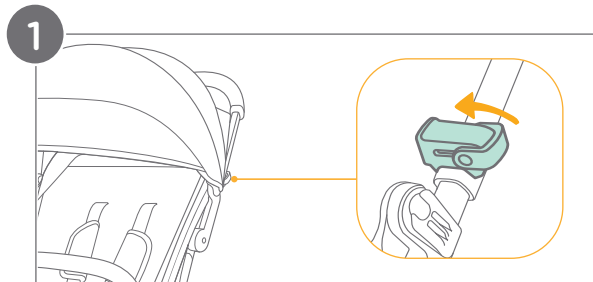
3 - Releasing the Infant Car Seat Lock:

Release the infant car seat lock by sliding its rotating part towards the outside of the stroller.

ALWAYS keep the infant car seat lock engaged when an infant car seat is attached to the stroller.



The infant car seat may be installed or removed with the infant car seat lock engaged.



4 - Removing the Car Seat:

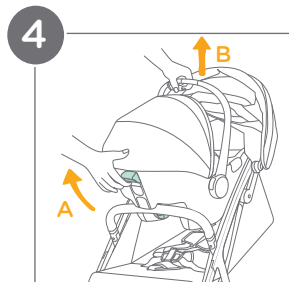
Locate the release handle (A) on the car seat and squeeze it.

While squeezing the release handle, lift the infant car seat upwards (B) to detach it from the stroller.

WARNING: Fall Hazard: ALWAYS check that the infant car seat is securely attached to the stroller by pulling up on the car seat.

ALWAYS insert the infant car seat rear-facing. **NEVER** use it forward-facing.

ALWAYS secure your child with the infant car seat harness. Refer to your Joie infant car seat manual for information on properly restraining your child.



Using Carry Bag:

If a carry bag is included with your Nutmeg stroller, first fold the stroller per the instructions on pg. 34.

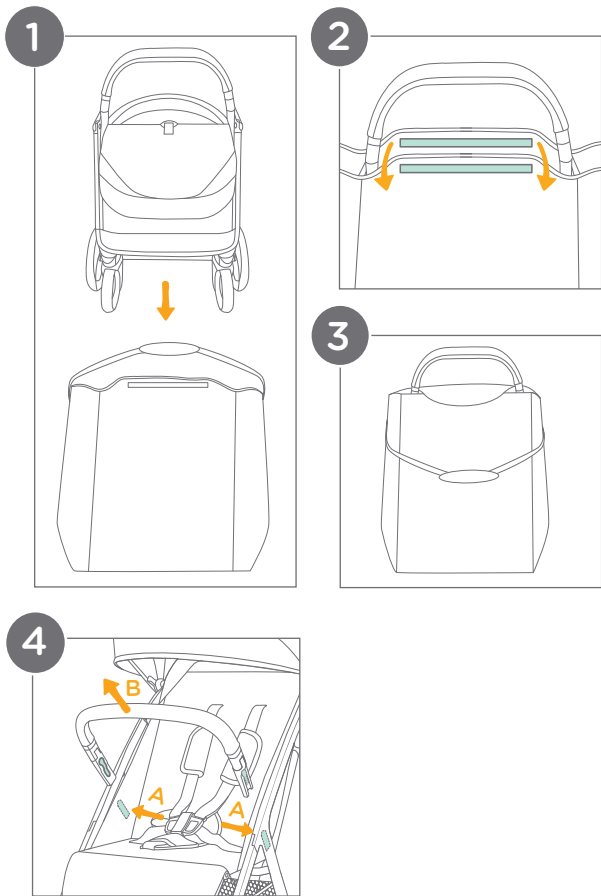
- 1 - Insert the folded stroller straight into the carry bag.
- 2 - The arm bar will be protruding from the top of the carry bag. Attach the corresponding hook and loop closure through the arm bar opening.
- 3 - The arm bar can then be used as a handle to carry the stroller.

For more compact travel, the arm bar can be removed and inserted into the carry bag. In this case, use the included strap on the carry bag.

4 - Removing the Arm Bar:

Find the arm bar release buttons on the inner arm bar. Press both arm bar release buttons simultaneously (A).

Pull the arm bar outward (B) to detach it from the stroller frame.



Care & Maintenance:

Cleaning:

Seat pad: Spot clean with a sponge and soapy water.

Stroller frame: Wipe clean with a solution of warm water and mild household soap. Avoid bleach and harsh detergents.

Plastic parts: Periodically wipe clean with a damp cloth.

Metal parts: After contact with water, thoroughly dry the metal parts to prevent rust.

Maintenance:

Regular inspection: Check the stroller regularly for loose or missing parts. Discontinue use if parts are loose or missing.

Worn parts: Replace any worn or damaged parts. Use only Joie replacement parts.

Torn material or stitching: Repair or replace torn fabric or stitching. Use only Joie replacement fabrics.

Contact Joie Consumer Service at:

Email: info.us@joiebaby.com • Phone: 1-866-798-7866

Storage:

Extreme weather exposure: Avoid excessive sun or heat exposure to prevent fading or warping of parts. Avoid storing outside or in cold conditions.

Drying after use: If the stroller gets wet, open the canopy and allow it to dry completely before storing.

Wheel Maintenance:

Squeaking wheels: Apply a light coat of lubricating oil (e.g., silicone spray, anti-rust oil, or sewing machine oil) directly to the axle and wheel assembly to eliminate squeaking.

Beach Use:

After beach use: Thoroughly clean the stroller to remove sand and salt from the mechanisms and wheels. This helps to prevent rust.

Cup Holder:

Use mild detergent and warm water.

For a more thorough cleaning, remove the cup holder (see pg. 16).

The cup holder can be placed on the top rack of your dishwasher for convenient cleaning.

Joie™

Effortlessly happy.

Helping parents be their best
with worry-free baby gear.