

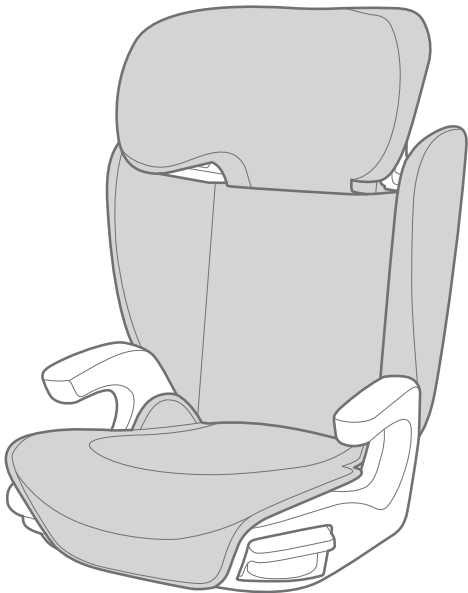
Joie™

ECE R129/04
Child height 100cm-150cm

i-Provo™

i-Size Booster

GB Instruction Manual



ECE R129/04: i-Size



Welcome to Joie™

Congratulations on becoming part of the Joie family! We are so excited to be part of your journey with your little one. While traveling with the i-Provo™ booster you are using a high quality, fully certified safety enhanced child restraint. Please carefully read this manual and follow each step to ensure a comfortable ride and best protection for your child.

To use this Joie booster according to ECE R129/04, your child must meet the following requirements.

Child height 100cm-150cm (Reference age 3.5-12 years).

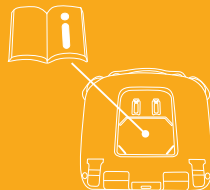
Booster

Please read all the instructions in this manual before installing and using the product.

**! IMPORTANT: KEEP FOR FUTURE REFERENCE.
PLEASE READ CAREFULLY.**

! Please keep the quick start guide for future reference.

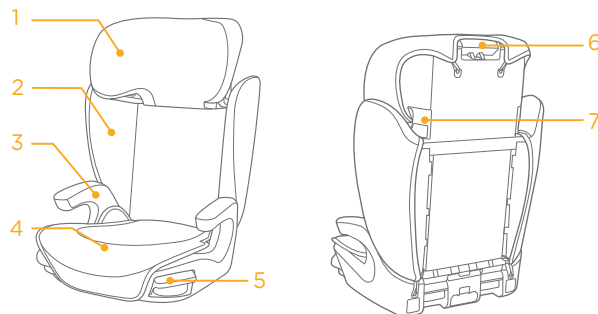
For warranty information, please visit our website at joiebaby.com



Parts List

Make sure all parts are available before assembly. If any part is missing, please contact local retailer. No tools are required for assembly.

- | | | | |
|---|--------------------|---|-------------------------------|
| 1 | Head Support | 6 | Head Support Adjustment Lever |
| 2 | Lower Back Support | 7 | Shoulder Belt Guide |
| 3 | Armrest | | |
| 4 | Base | | |
| 5 | Cupholders | | |



WARNING

- ! NO booster can guarantee full protection from injury in an accident. However proper use of this booster will reduce the risk of serious injury or death to your child.
- ! Always take care to follow the installation instructions correctly, this will ensure the booster performs at an optimum safety level.
- ! Do take care so that the rigid items and plastic parts of a booster shall be so located and installed that they are not liable to become trapped by a movable seat or in a door of the vehicle.
- ! To use this booster seat according to the ECE R129/04, your child must meet the following requirements.
Child height 100cm-150cm (reference age: 3.5-12 years). Forward facing only (in vehicle travel direction)
- ! The enhanced child restraint may not fit in all approved vehicles.
- ! Any straps holding the booster to the vehicle should be tight, that any straps restraining the child should be adjusted to the child's body, and that straps should not be twisted.
- ! The booster seat should be replaced if it has been subjected to heavy loads in the event of an accident or if it has been dropped.

WARNING

- ! This booster seat is only intended to be used in the car.
- ! Do not make any alterations or additions to the booster seat without approval from the type approval authority. DO NOT remove any of the white EPP/EPS foams. Failure to do so may result in serious safety issues.
- ! DO NOT use the seat if the surfaces are too hot from sunlight.
- ! Never leave the child unattended in the booster seat or vehicle, not even for a few minutes.
- ! Any luggage or other objects liable to cause injuries in the event of a collision shall be properly secured.
- ! The booster shall not be used without the soft goods.
- ! The booster soft goods should not be replaced with any other than the one recommended by the manufacturer, because the soft goods constitutes an integral part of the restraint performance.
- ! Always secure child in booster, even on short trips, as this is when most accidents occur.
- ! DO NOT leave this booster, or other items unbelted or unsecured in your vehicle. Remove the booster seat from the car if not regular used and store in a dry, sun-protected surrounding.

WARNING

- ! It's recommended not to use a second-hand booster seat whose history is not known. It may have invisible structural damages or defects due to incorrect usage/storage.
- ! DO NOT use any load bearing contact points other than those described in the instructions and marked on the booster.
- ! DO NOT install this booster under the following conditions:
 1. Vehicle seats facing sideways or rearward with respect to the vehicle's direction of travel.
 2. Vehicle seats movable during installation.
- ! Consult the retailer for issues concerning maintenance repair and part replacement.
- ! To avoid burns, never put hot liquids in your booster's cupholders.

Emergency

In case of emergency or accidents, it is most important to have your child taken care of with first aid and medical treatment immediately.

Product Information

1. This is an i-Size booster seat Enhanced Child Restraint System. It is approved according to UN Regulation No.129, for use primarily in "i-Size seating positions" as indicated by vehicle manufacturers in the vehicle user's manual.
2. If in doubt, consult either the Enhanced Child Restraint System manufacturer or the retailer.

Materials	Plastics, Metal, Fabrics
Patent No.	Patents pending
Suitable for	Children height 100cm-150cm (Reference age 3.5-12 years).
Installation	Forward facing (in vehicle travel direction)

Booster Assembly

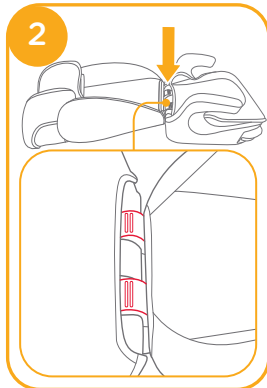
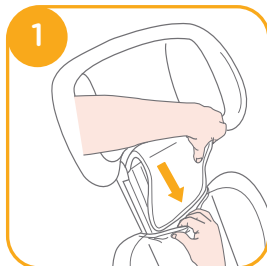
see images 1 - 3

1. Squeeze the head support adjustment lever first and then slide in lower back support under the fabric cover to connect them together. ①

! CHECK to make sure two pieces are securely snapped together by pulling on them.

2. To attach the lower back support to the base, hook the lower back support over the seat bar hinge on the base. ②

3. Rotate the lower back support up while holding the booster seat until it clicks into an upright position. ③



Height Adjustment – for Head Support

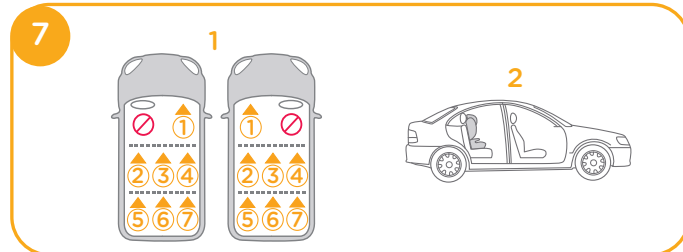
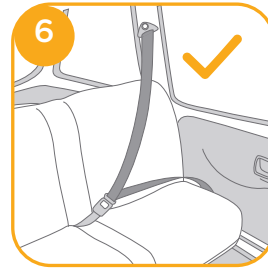
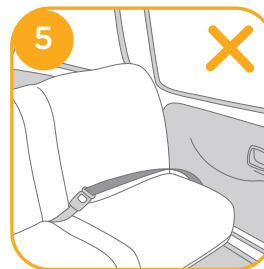
see image 4

Squeeze the head support adjustment lever while pulling up or down on the head support until it snaps into one of the 10 positions.



Concerns on Installation

see images 5 - 7



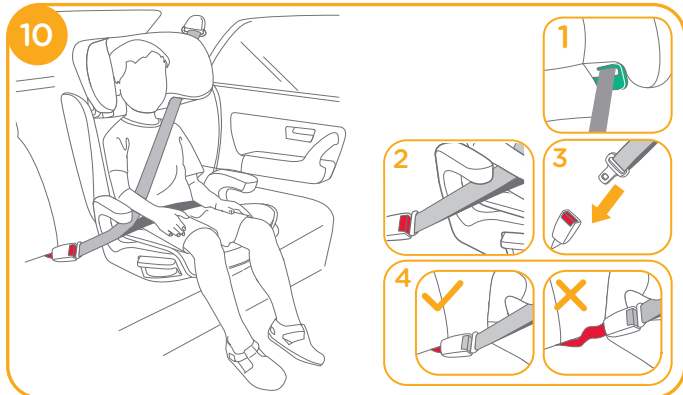
Installation with 3-point-belt

see images 8 - 14



! Pull the vehicle safety belt and pass through the belt path 10, and then buckle it up. 10 -3

! Position shoulder belt through the shoulder belt guide shown in 10 -1



! DO NOT position vehicle belt over top of the armrests. It must pass underneath the armrests. 10 -2

! The booster can not be used if the vehicle safety belt buckle (female buckle end) is too long to anchor the booster securely. 10 -4

! After your child is placed in this booster, the safety belt must be used correctly, and ensure that any lap strap is worn low down, so that the pelvis is firmly engaged. 10

! To ensure the correct head support height is obtained, the bottom of the headrest MUST be even with the top of child's shoulders as shown in 11 and the shoulder belt must be positioned in the green zone as shown in 12

! Place a booster firmly against the back of a forward-facing vehicle seat equipped with a lap/shoulder belt.



- ! Make sure, that the shoulder belt portion of the vehicle belt goes straight through the shoulder belt guide as shown in 13
- ! Tighten the vehicle belt by pulling the shoulder strap until all belt slack is removed.
- ! If the belt lays across child neck, head or face, readjust head support height.
- ! Any straps holding the booster to the vehicle should be tight and the straps should not be twisted.



Use Cupholders

see image 15

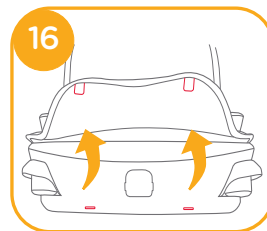


Detach Soft Goods

see images 16 - 17

Follow steps 16 - 17 to detach soft goods.

To re-attach the soft goods please repeat the above steps in the reverse order.



Care and Maintenance

- ! Please wash the soft goods and inner padding with cold water under 30°C.
- ! Do not iron the soft goods.
- ! Do not bleach or dry clean the soft goods.
- ! Do not use undiluted neutral detergent gasoline or other organic solvent to wash the booster. It may cause damage to the booster.
- ! Do not twist the soft goods and inner padding to dry with great force. It may leave the soft goods and inner padding with wrinkles.
- ! Please hang dry the soft goods.
- ! Please remove the booster from the vehicle seat if not in use for a long period of time. Put the booster in a cool, dry place and somewhere your child cannot access it.





Allison Baby UK Ltd,
Venture Point, Towers Business Park
Rugeley, Staffordshire, WS15 1UZ

NUNA International B.V.
Van der Valk Boumanweg 178 C,
2352 JD Leiderdorp, The Netherlands

bring the kids™

Share the joy at joiebaby.com

IM-002000A