

Joie™

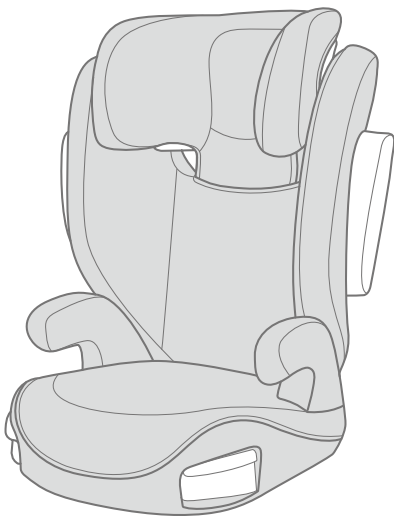
15-36kg

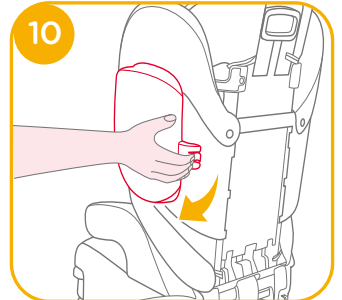
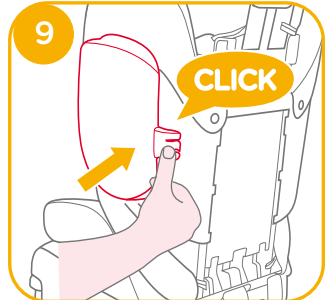
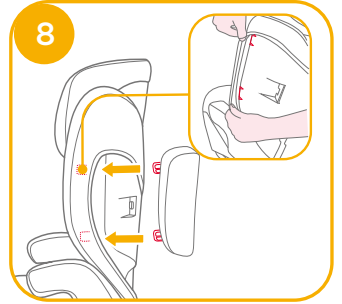
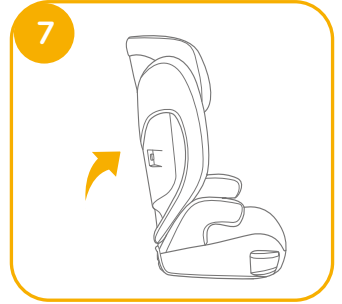
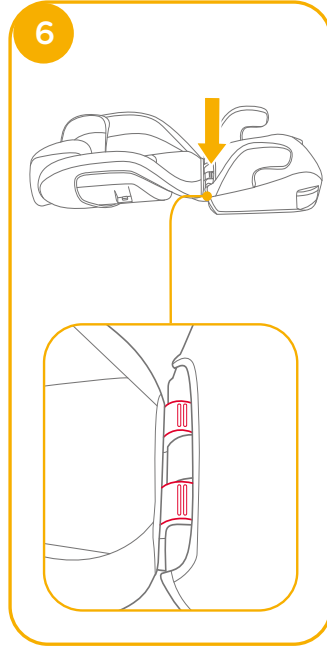
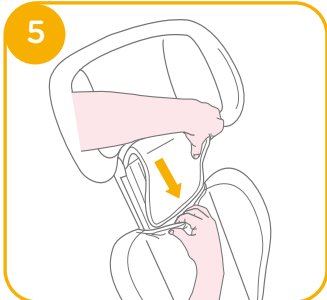
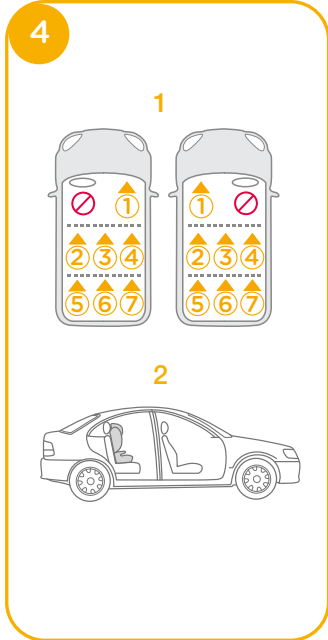
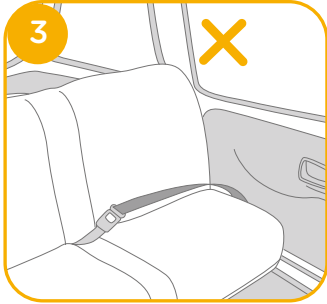
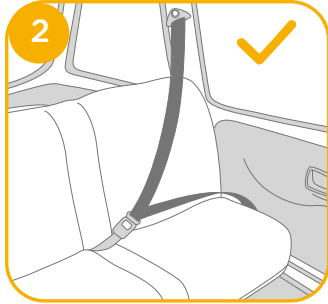
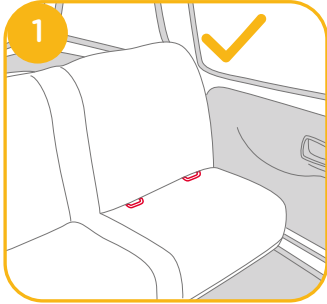
## i-Trillo™ FX

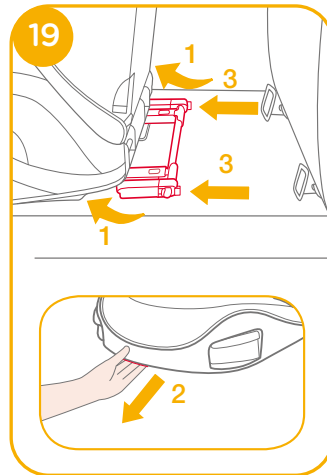
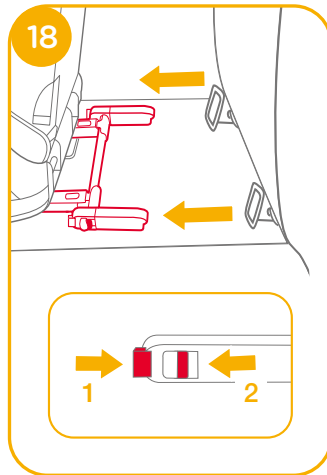
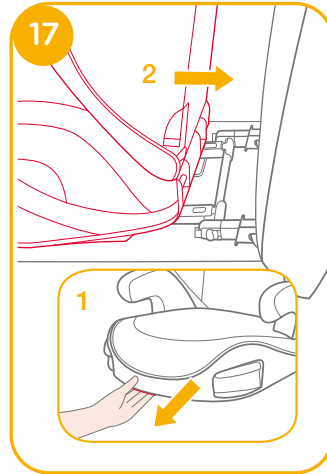
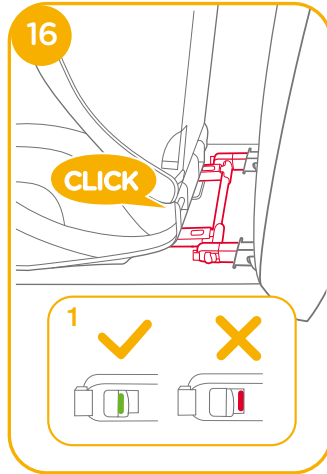
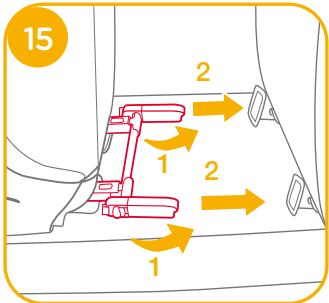
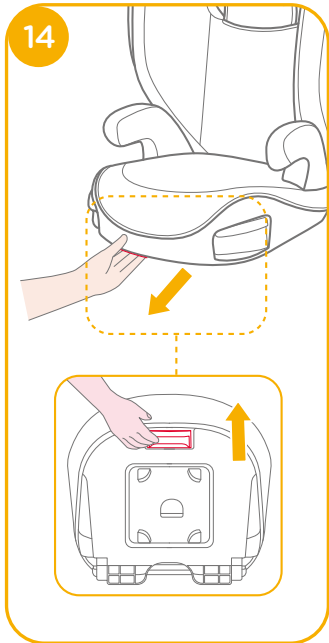
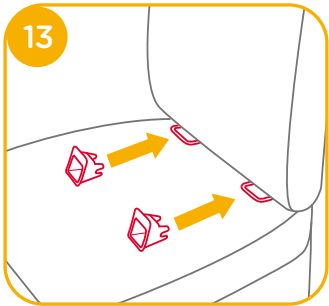
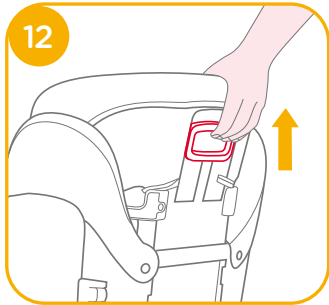
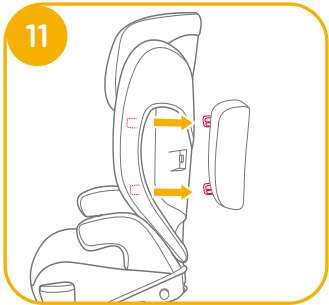
汽車用兒童保護裝置

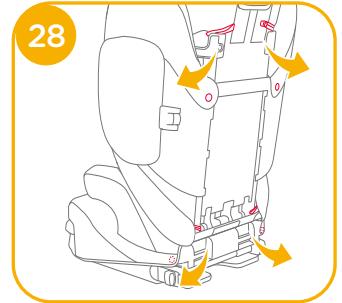
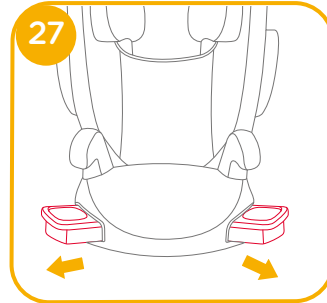
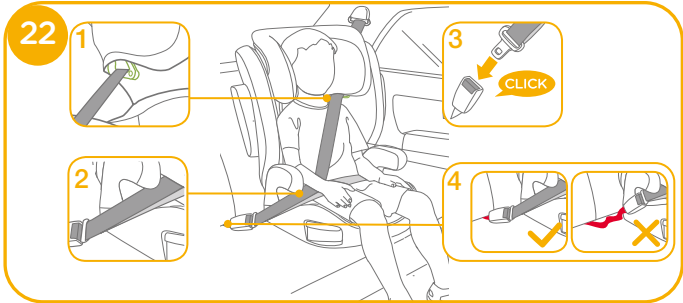
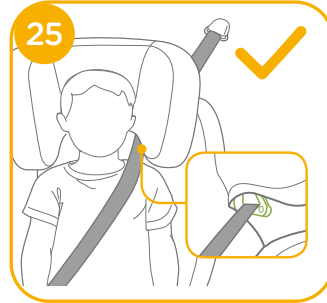
### 使用說明書

本產品符合安全標準  
CNS 11497 測試和認證  
組裝及使用本產品前  
請先閱讀說明書全文









# 恭喜您

恭喜您成為 Joie 家族的一員！很高興能與您的寶寶共度行車旅程。乘坐本產品時，您的寶寶享受的是一台高品質和通過安全標準及歐盟安全標準檢測的 II / III 級車用兒童保護裝置。請仔細研讀並依照本說明書的指示操作，如此才能保障並提供您的寶寶一個安全又舒適的行車旅程。

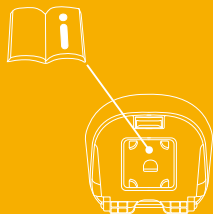
本車用兒童保護裝置適用於有 ISOFIX 固定裝置的汽車，因本車用兒童保護裝置是依安全標準 CNS 11497 去做測試和認證的。台灣區域使用請依照 CNS 標準規範。

這台車用兒童保護裝置適用於體重 15-36kg (約 3.5-12 歲) 的兒童。

## 汽車用兒童保護裝置

！重要：請仔細閱讀並妥善保存本說明書，以便日後參考。

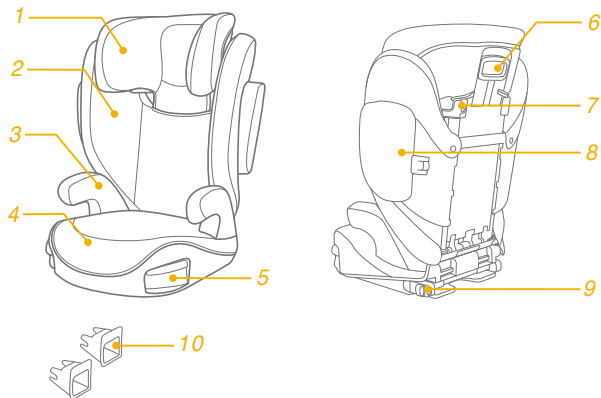
本說明書不使用時，請存放在底座下方的存儲空間內(如下圖)。安裝和使用本產品前，請先閱讀說明書全文。



## 產品組件及各部件名稱

請確認產品組件是否有遺漏，如有遺漏，請聯繫代理商。本產品無需工具進行組裝。

- |       |               |
|-------|---------------|
| 1 頭靠  | 6 頭靠調整拉桿      |
| 2 背靠  | 7 肩帶導向器       |
| 3 扶手  | 8 側向保護塑膠      |
| 4 底座  | 9 Isosafe 連接器 |
| 5 置物杯 | 10 ISOFIX 導向器 |



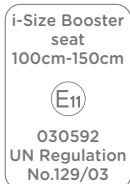
# 警告

- ! 必須小心定位和安裝兒童保護裝置，以免被活動式座椅或車門卡住。
- ! 兒童保護裝置適用於體重15-36kg (大約3.5-12歲的兒童)。
- ! 勿提供2歲以下兒童乘坐。
- ! 任何束縛兒童保護裝置至車輛之織帶應束緊，任何束縛兒童之織帶應根據兒童身體進行調節，且此織帶不應扭曲。
- ! 將寶寶放在本兒童保護裝置後，必須正確的扣合及使用安全帶，並確保腰部織帶能有效束縛骨盆部位。
- ! 不正確使用或安裝本兒童保護裝置，當緊急剎車和急轉彎時，可能會導致嚴重受傷或死亡的危險。
- ! 請勿使用其它廠商生產的兒童保護裝置座墊。請與代理商聯繫只可使用Joie配件更換零件。
- ! 請勿使用說明中未有顯示的任何配件。
- ! 請勿將此產品安裝在前座上，防止意外發生時造成乘坐的兒童傷亡。
- ! 在無人照料下，不得讓兒童留在兒童保護裝置內。
- ! 請勿將未使用汽車安全帶固定住的兒童座椅留在車內，以免緊急剎車時，傷害到其他乘客。若不經常使用兒童保護裝置時，請將其搬離汽車座椅。
- ! 任何行李或其他可能在碰撞中造成傷害之物品應適當牢固。
- ! 本兒童保護裝置若於意外中遭受劇烈撞擊後，不可繼續使用，應立即更換兒童保護裝置。意外可能導致兒童保護裝置產生潛在危險。
- ! 請勿在兒童保護裝置上進行未經驗證許可之改裝或增加其他裝置以及未依兒童保護裝置製造商提供之安裝說明使用，以免造成受傷或死亡。
- ! 請勿使用已經損壞或缺失零件的兒童保護裝置。請勿使用切割過的、磨損的或損壞的車輛安全座椅。
- ! 請讓座椅遠離日光，以免產品溫度過高對兒童的皮膚造成傷害。
- ! 請勿在未閱讀或了解本兒童保護裝置說明書及汽車說明書之前，使用或安裝本兒童保護裝置。因為可能會導致嚴重受傷或死亡的危險。
- ! 請勿使用二手兒童保護裝置或來歷不明的兒童保護裝置，因為它們可能存在危害乘坐兒童安全的潛在危險。
- ! 當本兒童保護裝置沒有座布時，請勿使用，因座布為兒童保護裝置束縛性能之整體構成要件。
- ! 請勿使用非本製造商推薦的座布，否則會影響兒童保護裝置的總體性能。
- ! 有關零件更換或維修問題，請向代理商諮詢。
- ! 請勿把本兒童保護裝置當作平常的椅子使用，會容易翻倒造成傷害。
- ! 不可使用繩子等其他物件代替汽車安全帶，以免兒童被意外勒住。
- ! 請勿讓您的寶寶穿著過大的衣物，所穿的衣物必須能讓兒童保護裝置的安全帶適當而安全地扣合。
- ! 使用本產品前，請取掉PE袋和包裝材料，並放到嬰兒和兒童觸摸不到的地方。
- ! 請勿搬運乘坐有兒童的兒童保護裝置。
- ! 不可使用除使用說明書中所標註以外之其他受力點。
- ! 請勿後向使用兒童保護裝置。
- ! 為避免燒傷，千万不要把熱液體放在兒童保護裝置的置物杯裏。

## 緊急情況處理

遇緊急事故時，需將安全帶剪斷，迅速將乘坐的兒童移離現場。

## 產品資訊



此兒童保護裝置符合CNS 3972或其他等效標準之三點式安全帶之車輛座椅使用。不適用於裝有二點式安全帶的汽車座椅上。

### 三點式安全帶安裝兒童保護裝置

1. 此為“通用型”兒童保護裝置，符合安全標準CNS 11497。其適用大部分(並非全部)之車輛座椅。
2. 若車輛製造商在車主使用手冊中述明其可適用此質量等級之“通用型”兒童保護裝置，則本裝置可安裝於該車輛上。
3. 此兒童保護裝置歸類為“通用型”，比其他無標示此注意事項之兒童保護裝置可適用於較多車輛。
4. 若有疑問，請洽兒童保護裝置製造商或代理商。

### 三點式安全帶和Isosafe連接器安裝兒童保護裝置

1. 此兒童保護裝置被歸類為“半通用型”，符合安全標準CNS 11497。用於裝有ISOFIX固定器系統之車輛座椅。
2. 其他車輛型式亦有可能適用此兒童保護裝置。若有疑問，請洽兒童保護裝置製造商或代理商。

### Allison Baby UK Ltd.

Venture Point, Towers Business Park,  
Rugeley, Staffordshire, WS15 1UZ  
[www.joiebaby.com](http://www.joiebaby.com)

產品名稱	汽車用兒童保護裝置
產品型號	C2218
適用範圍	15-36kg(約3.5-12歲)的寶寶
主要材質	塑膠、五金、布
質量等級	II / III
淨重	5.09kg
產品尺寸	624mmx543mmx555mm
製造日期	詳見產品上貼紙日期(年/月/日)
專利號碼	專利申請中
原產地	中國

委製商	巧兒宜國際股份有限公司
進口商	巧兒宜國際股份有限公司
地址	台北市內湖區瑞光路431號2樓
電話	02-27973000
統一編號	52603333

代理商	奇哥股份有限公司 Chickabiddy Co., Ltd
地址	台北市南京東路四段186號5樓
服務專線	0800-001-256/02-25781188
統一編號	04222671
網址	<a href="http://www.chick.com.tw">www.chick.com.tw</a>

## 安裝注意事項

見圖 1 - 4

## 產品組裝

見圖 5 - 11

1. 按壓頭靠調整拉桿，並對齊背靠垂直插入。頭靠座布需要在背靠座布下方 5
- ! 請嘗試拉動，以便檢查兩部份是否已正確卡合。
2. 當背靠安裝到底座上時先用力把背靠下壓，背靠上的 U 型鉤與底座上橫桿會相互卡合 6
3. 向上旋轉背靠 7
4. 使側向保護塑膠凸台和背靠上的凹槽對齊插入 8 9
- ! 請根據汽車的尺寸來選擇是否安裝側向保護塑膠。
5. 移除側向保護塑膠請參考 10 11

## 頭靠高度調整

見圖 12

按壓頭靠調整拉桿，同時上下滑動頭靠到合適高度，頭靠高度共有 10 個段位，調整如 12 所示。

## Isosafe連接裝置和三點式安全帶安裝或僅用三點式安全帶安裝兒童保護裝置

見圖 13 - 26

如果在座椅背靠下方有鐵環，可以使用連接器去連接。對它的位置和使用要求可以參考汽車使用說明。

1. 將ISOFIX導向器固定到ISOFIX固定點上，ISOFIX導向器既可防止汽車座椅表面被刮破，又可為Isosafe連接器導向 13
2. 按壓底座的Isosafe調整按鈕，拉出Isosafe連接器 14
- 將Isosafe連接器旋轉180度直到它們指向ISOFIX導向器的方向 15
3. 將Isosafe連接器與ISOFIX固定點對齊，然後將兩個Isosafe連接器與ISOFIX固定點卡合連接 16
- ! 請確定左右兩邊的Isosafe連接器都已固定到ISOFIX固定點上且兩個Isosafe連接器上的指示器應顯示綠色 16 -1
- ! 同時往外拉兩邊的Isosafe連接器，以確保Isosafe連接器已固定。
4. 按壓Isosafe調整按鈕，將座椅靠背縮回到所需位置 17
5. 移除兒童保護裝置：
  - a. 移除Isosafe連接器時，按壓連接器上的第二道安全鎖 18 -1與釋鎖按鈕 18 -2，然後將Isosafe連接器往外拉即可。
  - b. 將Isosafe連接器旋轉180度，然後按壓Isosafe調整按鈕來收合Isosafe連接器 19
  - ! 將汽車安全帶穿過兒童保護裝置路徑如 22 所示。並扣合安全帶來器 22 -3



! 也可以僅通過三點式安全帶連接 22 - 26

! 肩帶必須要穿過肩帶導向器 22 -1

! 安全帶必須通過扶手下方 22 -2

! 汽車安全帶母扣段若太長，接觸到或超過兒童保護裝置受力點位置，則不能使用 22 -4

! 兒童被放置在兒童保護裝置裏後，必須正確使用安全帶，確保腰帶固定在靠下方位置，這樣使骨盆牢固固定 22

! 如 23 所示，為保證正確的頭靠高度，頭靠的底部必須與兒童肩膀的最高點水平且肩帶必須穿過綠色區域橫跨兒童肩膀 24

! 請將兒童安全座椅與配置有三點式安全帶的前向汽車座椅被靠貼緊。

! 確保安全帶的肩帶部分直接穿過肩帶導向器如圖 25

! 如果安全帶橫跨了兒童的脖子、頭部或面孔，須重新調整頭靠高度。

! 所有將兒童保護裝置保持在汽車上的安全帶應該都是緊的，請確保汽車安全帶沒有鬆弛或扭曲。

## 使用置物杯

見圖 27

## 座布拆卸

見圖 28

打開座布背面的 4 對鈕扣和 4 對鬆緊帶並將其取下 28  
依相反步驟即可重新組裝座布。

## 保養維護與保固

! 請使用30度以下水溫清洗。

! 請勿使用熨斗熨燙。

! 請勿使用漂白劑及乾洗。

! 請勿使用未經稀釋的中性清潔劑、汽油或其他有機溶劑清洗本兒童保護裝置，否則可能對兒童保護裝置造成損壞。

! 請勿大力扭乾，過分大力扭乾可能留下皺褶。

! 請於陰涼處鋪平晾乾。


! 當長時間不使用本兒童保護裝置時，請將本兒童保護裝置從汽車座椅上拆除，並存放於陰涼處及實實不易接觸的地方。

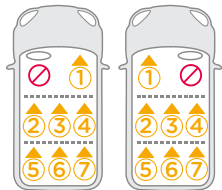


### 延長保固服務

請於購買起一個月內至奇哥官網進行登錄，登錄成功後即享有商品延長一年保固服務。

## 汽車安裝資訊

1. 其他車輛型式亦有可能適用此兒童保護裝置。以下車型主要為歐洲銷售車款安裝適配性資料。若有疑問，請洽兒童保護裝置製造商或代理商。
2. 兒童保護裝置不能安裝於前座之位置。
3. ● 表示汽車座椅可安裝本兒童保護裝置。
4. ✘ 表示汽車座椅不可安裝本兒童保護裝置。
5. ⚡ 表示用電或其它混合驅動的車輛。
6.  表示符合i-size的車輛。
7. SBI 表示汽車地板下有儲存盒。
8. 將此座椅安裝在地板下有儲物盒的汽車上時，請參考汽車使用說明書或聯繫代理商。  
! 表示汽車地板下儲物盒的位置。
9. 如果您的汽車品牌未被列入本說明書或未用“●”或“✘”進行標示，請查閱您的汽車手冊或聯絡兒童約束系統製造商，以進一步了解相關資訊。
10. 此汽車資訊信息是收集車輛及汽車座椅後仔細編制的。對於明細的準確性不承擔任何責任，目的僅用於指導。建議您在購買時檢查您所購買的兒童保護裝置與您的汽車是否匹配。



## NOTE

Joie™

15-36kg

## i-Trillo™ FX

high back booster

### Instruction Manual

This child restraint is approved to CNS 11497 series of amendments. Please read all the instructions in this manual before installing and using the product.



# GB Welcome to Joie™

Congratulations on becoming part of the Joie family! We are so excited to be part of your journey with your little one. While traveling with the i-Trillo™ FX series high back booster you are using a high quality, fully certified safety enhanced child restraint. Please carefully read this manual and follow each step to ensure a comfortable ride and best protection for your child.

To use this Joie booster according to CNS 11497, your child must meet the following requirements.

Child height 15-36kg (Reference age 3.5-12 years).

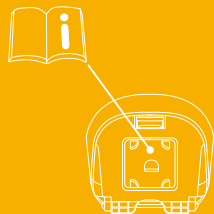
## Booster

Please read all the instructions in this manual before installing and using the product.

**! IMPORTANT: KEEP FOR FUTURE REFERENCE.  
PLEASE READ CAREFULLY.**

Please keep the instruction manual in the storage compartment at the bottom of the booster as right figure.

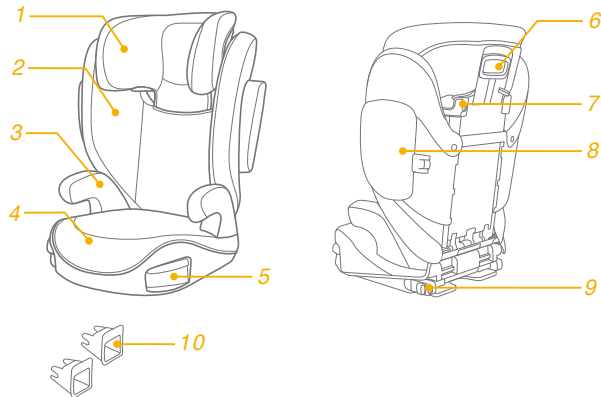
For warranty information, please visit our website at [joiebaby.com](http://joiebaby.com)



## Parts List

Make sure all parts are available before assembly. If any part is missing, please contact local retailer. No tools are required for assembly.

- |   |                    |    |                               |
|---|--------------------|----|-------------------------------|
| 1 | Head Support       | 6  | Head Support Adjustment Lever |
| 2 | Lower Back Support | 7  | Shoulder Belt Guide           |
| 3 | Armrest            | 8  | Side Impact Protection        |
| 4 | Base               | 9  | Isosafe Connector             |
| 5 | Cupholders         | 10 | ISOFIX Attachments Guides     |



## WARNING

- ! NO booster can guarantee full protection from injury in an accident. However proper use of this booster will reduce the risk of serious injury or death to your child.
- ! Always take care to follow the installation instructions correctly, this will ensure the booster performs at an optimum safety level.
- ! Do take care so that the rigid items and plastic parts of an booster shall be so located and installed that they are not liable to become trapped by a moveable seat or in a door of the vehicle.
- ! Your child must meet the following requirements. Child height 15-36kg (reference age: 3.5-12 years). Forward facing only (in vehicle travel direction)
- ! The enhanced child restraint may not fit in all approved vehicles.
- ! Any straps holding the booster to the vehicle should be tight, that any straps restraining the child should be adjusted to the child's body, and the straps should not be twisted.
- ! The booster seat should be replaced if it has been subjected to heavy loads in the event of an accident or if it has been dropped.

## WARNING

- ! This booster seat is only intended to be used in the car.
- ! Do not make any alterations or additions to the booster seat without approval from the type approval authority. DO NOT remove any of the white EPP/EPS foams. Failure to do so may result in serious safety issues.
- ! DO NOT use the seat if the surfaces are too hot from sunlight.
- ! Never leave the child unattended in the booster seat or vehicle, not even for a few minutes.
- ! Any luggage or other objects liable to cause injuries in the event of a collision shall be properly secured.
- ! The booster shall not be used without the soft goods.
- ! The booster soft goods should not be replaced with any other than the one recommended by the manufacturer, because the soft goods constitutes an integral part of the restraint performance.
- ! Always secure child in booster, even on short trips, as this is when most accidents occur.
- ! DO NOT leave this booster, or other items unbelted or unsecured in your vehicle. Remove the booster seat from the car if not regular used and store in a dry, sun-protected surrounding.

## WARNING

- ! It's recommended not to use a second-hand booster seat whose history is not known. It may have invisible structural damages or defects due to incorrect usage/storage.
- ! DO NOT use any load bearing contact points other than those described in the instructions and marked on the booster.
- ! DO NOT install this booster under the following conditions:
  1. Vehicle seats facing sideways or rearward with respect to the vehicle's direction of travel.
  2. Vehicle seats movable during installation.
- ! Consult the retailer for issues concerning maintenance repair and part replacement.
- ! To avoid burns, never put hot liquids in your booster's cupholders.

## Emergency

In case of emergency or accidents, it is most important to have your child taken care of with first aid and medical treatment immediately.

## Product Information

1. This is an i-Size booster seat Enhanced Child Restraint System. It is approved according to UN Regulation No.129, for use primarily in "i-Size seating positions" as indicated by vehicle manufacturers in the vehicle user's manual.
2. If in doubt, consult either the Enhanced Child Restraint System manufacturer or the retailer.

<b>Product</b>	Booster seat
<b>Materials</b>	Plastics, Metal, Fabrics
<b>Patent No.</b>	Patents pending
<b>Suitable for</b>	Child height 15-36kg (Reference age 3.5-12 years).
<b>Installation</b>	Forward facing (in vehicle travel direction)

## Concerns on Installation

see images 1 - 4

## Booster Assembly

see images 5 - 11

1. Squeeze the head support adjustment lever first and then slide in lower back support under the fabric cover to connect them together. 5
- ! CHECK to make sure two pieces are securely snapped together by pulling on them.
2. To attach the lower back support to the base, hook the lower back support over the seat bar hinge on the base. 6
3. Rotate the lower back support up while holding the booster seat until it clicks into an upright position. 7
4. Align the side impact protection with the slot of lower back support plastics mounts, and then insert to lock. 8 9
- ! Please choose whether to install the side impact protection according to the size of the car.
5. Remove side impact protection. Please refer to 10 11

## Height Adjustment – for Head Support

see image 12

Squeeze the head support adjustment lever while pulling up

or down on the head support until it snaps into one of the 10 positions. 12

## Installation using Isosafe System and 3-point belt or using 3-point belt only

see images 13 - 26

If vehicle is equipped with Isosafe, the vehicle lower anchor points may be visible at the vehicle seat crease. See your vehicle owner's manual for exact locations, anchor identification, and requirements for use.

1. Fit the ISOFIX guides with the ISOFIX anchor points. 13 The ISOFIX guides can protect the surface of the vehicle seat from being torn. They can also guide the Isosafe connectors.
2. Press the Isosafe adjusting button to pull out the Isosafe connectors. 14

Rotate the Isosafe connectors 180 degrees until they are pointing in the direction of the ISOFIX guides. 15

3. Line up the Isosafe connectors with the ISOFIX anchor points, and then click both Isosafe connectors into the ISOFIX anchor points. 16

! Make sure that both Isosafe connectors are securely attached to their ISOFIX anchor points. The colors of the indicators on the both Isosafe connectors should be completely green. 16 -1

! Check to make sure the booster is securely installed by pulling on the both Isosafe connectors.

4. Press the Isosafe adjustment button to retract the seat back to desired position. 17

5. To remove the booster:

- a. Press the secondary lock button **18** -1 first and then the button **18** -2 on the Isosafe connectors before removing the booster from the vehicle seat.
- b. Rotate the Isosafe connectors by 180 degrees, then press the Isosafe adjusting button to fold the Isosafe connectors. **19**

! Pull the vehicle safety belt and pass through the belt path **22**, and then buckle it up. **22** -3

! Could also be installed by using 3-point belt only. **22** - 26

! Position shoulder belt through the shoulder belt guide shown in **22** -1

! DO NOT position vehicle belt over top of the armrests. It must pass underneath the armrests. **22** -2

! The booster can not be used if the vehicle safety belt buckle (female buckle end) is too long to anchor the booster securely. **22** -4

! After your child is placed in this booster, the safety belt must be used correctly, and ensure that any lap strap is worn low down, so that the pelvis is firmly engaged. **22**

! To ensure the correct head support height is obtained, the bottom of the headrest **MUST** be even with the top of child's shoulders as shown in **23** and the shoulder belt must be positioned in the green zone as shown in **24**

! Place a booster firmly against the back of a forward-facing vehicle seat equipped with a lap/shoulder belt.

! Make sure, that the shoulder belt portion of the vehicle belt goes straight through the shoulder belt guide as shown in **25**

! Tighten the vehicle belt by pulling the shoulder strap until all belt slack is removed.

! If the belt lays across child neck, head or face, readjust head support height.

! Any straps holding the booster to the vehicle should be tight and the straps should not be twisted.

## Use Cupholders

see image **27**

## Detach Soft Goods

see image **28**

Open 4 pairs of buttons and 4 pairs of elastics on the back of soft goods to remove it. **28**

To refit the seat pad simply reverse the steps above.




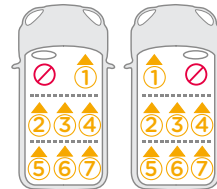
## Care and Maintenance

- ! Please wash the soft goods and inner padding with cold water under 30°C.
- ! Do not iron the soft goods.
- ! Do not bleach or dry clean the soft goods.
- ! Do not use undiluted neutral detergent gasoline or other organic solvent to wash the booster. It may cause damage to the booster.
- ! Do not twist the soft goods and inner padding to dry with great force. It may leave the soft goods and inner padding with wrinkles.
- ! Please hang dry the soft goods and inner padding in the shade.
- ! Please remove the booster from the vehicle seat if not in use for a long period of time. Put the booster in a cool, dry place and somewhere your child cannot access it.





## Vehicle Fitting Information



1. The Joie booster is suitable for fixing into the seat positions of most cars. The figures on the diagram below correspond with the vehicle fitting positions listed in the following pages. Seat positions in other cars may also be suitable to accept the booster. The following Vehicle Fitting Information is only for vehicles sold in European markets. If in doubt, consult either the booster manufacturer or the the retailer.
2. ALWAYS give priority to the rear seats of your vehicle.
3. If your child restraint can be fitted, it is marked with •
4. If your child restraint cannot be fitted, it is marked with ✕
5. Electric or hybrid vehicles are marked with ⚡
6. i-Size vehicles are marked with 
7. Vehicles with underfloor storage boxes are marked with **SB!**
8. If the vehicle is equipped with underfloor storage boxes, these positions are marked with !
9. If your vehicle is not listed in this manual or it is not marked with either a • or ✕ then please refer to your vehicle's handbook or contact the manufacturer for further information.






Alfa Romeo

	Guilietta (2018>)	x	.	x	.	-	-	-
	Guilietta (2010>)	x	.	x	.	-	-	-
	Guilietta (2018>)	x	.	x	.	-	-	-
	GT Sportcoupe (2004)	x	.	x	.	-	-	-
	MiTo (2009>)	x	.	-	.	-	-	-
	MiTo (2018>)	x	!	-	!	-	-	-
	Stelvio (2018>)	x	.	x	.	-	-	-
	156 Sportswagon (2005)	x	.	x	.	-	-	-
	159 (2011)	x	.	x	.	-	-	-

Audi

	A1 (2011>)	x	.	x	.	-	-	-
	A1 Sportback (2012>)	x	.	x	.	-	-	-
	A1 Sportback (2018>)	x	!	x	!	-	-	-
	S1 (2014>)	x	.	x	.	-	-	-
	A3 e-Tron Sportback (2015>)	x	.	x	.	-	-	-
	A3 Hatch (2012>)	x	.	x	.	-	-	-
	A3 S3 (2012>)	x	.	x	.	-	-	-
	A3/S3 Saloon (2014>)	x	.	x	.	-	-	-
	A3 Saloon (2018>)	x	.	x	.	-	-	-
	A3 (2004 - 2011)	x	.	x	.	-	-	-
	A3 (1996 - 2003)	x	.	x	.	-	-	-
	A4 Avant (2016>)	x	.	x	.	-	-	-
	A4/S4 (2009>)	x	.	x	.	-	-	-
	A4/S4 (2015>)	x	.	x	.	-	-	-
	A4/S4 Avant (2008 - 2016)	x	.	x	.	-	-	-
	A4 (2005 - 2009)	x	.	x	.	-	-	-
	A4 Allroad (2008 - 2016)	x	.	x	.	-	-	-
	A4 Saloon (2008>)	x	.	x	.	-	-	-
	A4 Saloon (2018>)	x	!	x	!	-	-	-
	A5 (2007>)	x	.	x	.	-	-	-
	A5 (2016>)	x	.	x	.	-	-	-
	A5/S5 Coupe (2016>)	x	.	-	.	-	-	-
	A5 Coupe (2006 - 2016)	x	.	-	.	-	-	-
	A5/S5 Sportback (2017>)	x	.	x	.	-	-	-
	A5/S5 Sportback (2007 - 2016)	x	.	x	.	-	-	-
	A6 Allroad (2016>)	x	.	x	.	-	-	-




	A6 (2011>)	x	.	x	.	-	-	-
	A6 Allroad (2011>)	x	.	x	.	-	-	-
	A6 Avant (2011>)	x	.	x	.	-	-	-
	A6/S6 (2011>)	x	.	x	.	-	-	-
	A6/S6 (2016>)	x	.	x	.	-	-	-
	A7/S7 Sportback (2016>)	x	.	x	.	-	-	-
	A7 Sportback (2011>)	x	.	x	.	-	-	-
	A7 Sportback (2018>)	x	!	x	!	-	-	-
	A8/S8 (2011>)	x	.	x	.	-	-	-
	A8 (2011>)	x	.	x	.	-	-	-
	A8 (2018>)	x	.	x	.	-	-	-
	Q2 (2016>)	x	.	x	.	-	-	-
	Q3 (2013>)	x	.	x	.	-	-	-
	Q3 (2018>)	x	!	x	!	-	-	-
	Q5/SQ5 (2012 - 2016)	x	.	x	.	-	-	-
	Q5 (2008 - 2012)	x	.	x	.	-	-	-
	Q5 (2018>)	x	.	x	.	-	-	-
	Q7 (2006 - 2016)	x	.	x	.	-	-	-
	Q7/SQ7 (2015>)	x	.	x	.	-	-	.
	TT Coupe (2006>)	x	.	x	.	-	-	-

Bentley

	Continental Flying Spur (2005 - 2012)	x	.	x	.	-	-	-
	Continental GT (2003 - 2012)	x	.	x	.	-	-	-
	Continental GTC (2005 - 2012)	x	.	x	.	-	-	-
	Mulsanne (2010>)	x	.	x	.	-	-	-
	Mulsanne (2012>)	x	.	x	.	-	-	-

BMW

	1 Series F20 (2011>)	x	.	x	.	-	-	-
	1-Series 5dr (2004 - 2011)	x	.	x	.	-	-	-
	1-Series Convertible (2008 - 2015)	x	.	x	.	-	-	-
	1-Series Coupe (2008 - 2015)	x	.	x	.	-	-	-
	2-Series AC-T (2015>)	x	.	x	.	-	-	-
	2-Series Coupe (2014>)	x	.	x	.	-	-	-
	2-Series Gran Tourer (2018>)	x	.	x	.	-	-	-

3GT (2013>)	×	●	×	●	-	-	-
3 Series F30 (2012>)	×	●	×	●	-	-	-
3-Series (2005 - 2011)	×	●	-	●	-	-	-
3-Series Coupe (2007- 2014)	×	●	×	●	-	-	-
4-Series Gran Coupe (2014>)	×	●	×	●	-	-	-
5-GT (2010>)	×	●	×	●	-	-	-
5-Series (2008 - 2010)	×	●	×	●	-	-	-
5-Series (2011>)	×	●	×	●	-	-	-
5-Series Saloon (2011>)	×	●	×	●	-	-	-
5-Series Saloon (2003 - 2010)	×	●	×	●	-	-	-
5-Series Touring (2011>)	×	●	×	●	-	-	-
5-Series Touring (2003 - 2010)	×	●	×	●	-	-	-
6-Series Coupe (2Dr) (2011>)	×	●	×	●	-	-	-
6-Series Convertible (2011>)	×	●	×	●	-	-	-
6-Series Gran Coupe (4dr) (2011>)	×	●	×	●	-	-	-
 6-Series Gran Turismo (2018>)	×	●	×	●	-	-	-
7-Series (2010>)	×	●	×	●	-	-	-
7-Series (2016>)	×	●	×	●	-	-	-
⚡ i3 (2014>)	×	●	×	●	-	-	-
M5 (2011)	×	●	×	●	-	-	-
M Sport Saloon (2018>)	×	!	×	!	-	-	-
X1 (2009 - 2015)	×	●	×	●	-	-	-
X1 (2016>)	×	●	×	●	-	-	-
 X1 F48 (2018>)	×	●	×	●	-	-	-
 X2 (2018>)	×	●	×	●	-	-	-
X3 F25 (2011>)	×	●	×	●	-	-	-
X4 (2014>)	×	●	×	●	-	-	-
X5 (2007 - 2014)	×	●	×	●	●	●	●
X5 (2015>)	×	●	×	●	●	●	●
X5 (2018>)	×	●	×	●	-	-	-
X5 M (2018>)	×	●	×	●	-	-	-
X6 (2008>)	×	●	×	●	-	-	-
X6 (2015>)	×	●	×	●	-	-	-

**Cadillac**

BLS Saloon (2006 - 2011)	×	●	×	●	-	-	-
CTS (2007)	×	●	×	●	-	-	-

**Chevrolet**


Aveo 5 door (2012>)	×	●	×	●	-	-	-
Camaro (2011)	×	●	×	●	-	-	-
Captiva (2007>)	×	●	×	●	-	-	-
Cruze (2009>)	×	●	×	●	-	-	-
Cruze (2012>)	×	●	×	●	-	-	-
Epica (2006)	×	●	×	●	-	-	-
HHR (2009)	×	●	×	●	-	-	-
Kalos (2002)	×	●	×	●	-	-	-
Lacetti (2004)	×	●	×	●	-	-	-
Malibu (2012)	×	●	×	●	-	-	-
Matiz (2006)	×	●	×	●	-	-	-
Nubira (2009)	×	●	×	●	-	-	-
Orlando (2011>)	×	●	×	●	-	-	-
Spark (2012>)	×	●	×	●	-	-	-
Tahoe (2006)	×	●	×	●	-	-	-
Traxx (2013>)	×	●	×	●	-	-	-
Volt (2011>)	×	●	×	●	-	-	-

**Chrysler**

300C (2012>)	×	●	×	●	-	-	-
Delta (2011>)	×	●	×	●	-	-	-
Delta (2007>)	×	●	×	●	-	-	-
Dodger Avenger (2007)	×	●	×	●	-	-	-
Dodger Caliber (2006)	×	●	×	●	-	-	-
Dodger Journey (2009)	×	●	×	●	-	-	-
Dodger Nitro (2006)	×	●	×	●	-	-	-
Dodge Ram (2008)	×	●	×	●	-	-	-
Grand Voyager (2008>)	×	●	×	●	●	●	●
Pacifica (2008)	×	●	×	●	-	-	-
PT Cruiser (2010)	×	●	×	●	-	-	-
Sebring (2007)	×	●	×	●	-	-	-
Voyager (2007)	×	●	×	●	●	●	●
Ypsilon (2011>)	×	●	×	●	-	-	-

**Citroen**

Berlingo II (2008>)	×	●	×	●	-	-	-
---------------------	---	---	---	---	---	---	---

Berlingo Multispace (2007>)	×	•	×	•	•	•	-
Berlingo Multispace (2009)	×	•	×	•	-	-	-
C1 (2006 - 2015)	×	•	×	•	-	-	-
C1 (2015>)	×	•	×	•	-	-	-
C2 (2004)	×	•	×	•	-	-	-
C3 5Dr (2005 - 2009)	×	•	×	•	-	-	-
C3 5Dr (2009 - 2016)	×	•	×	•	-	-	-
C3 5Dr (2017>)	×	•	×	•	-	-	-
C3 Picasso (2009>)	×	•	×	•	-	-	-
C4 (2010>)	×	•	×	•	-	-	-
C4 G-Picasso (2007 - 2013)	×	•	×	•	×	-	×
C4 Picasso (2007 - 2014)	×	•	×	•	•	•	-
C4 Picasso (2014>)	×	•	×	•	•	•	-
 C4-Cactus (2015>)	×	•	×	•	-	-	-
C5 (2005 - 2008)	×	•	×	•	-	-	-
C5 Saloon (2008>)	×	•	×	•	-	-	-
C5 Tourer (2008>)	×	•	×	•	-	-	-
C-Crosser (2007 - 2013)	×	•	×	•	-	-	-
DS3 (2011>)	×	•	×	•	-	-	-
DS3 Cabrio (2016>)	×	•	×	•	-	-	-
DS4 (2011>)	×	•	×	•	-	-	-
DS5 (2012>)	×	•	×	•	-	-	-
Evasion (2002)	×	•	×	•	•	×	•
Jumpy (2007 - 2012)	×	•	×	•	×	×	×
Nemo (2008>)	×	•	×	•	-	-	-
Saxo (2003)	×	•	×	•	-	-	-
Xsara (2000 - 2006)	×	•	×	•	-	-	-


**Dacia**

Dokker (2012)	×	•	×	•	-	-	-
Duster (2012>)	×	•	×	•	-	-	-
Duster (2018>)	×	•	×	•	-	-	-
Lodgy (2012)	×	•	×	•	-	-	-
Logan MCV (2013>)	×	•	×	•	-	-	-
Logan MCV (2018>)	×	•	×	•	-	-	-
Sandero (2013>)	×	•	×	•	-	-	-
Sandero (2018>)	×	•	×	•	-	-	-

**Daihatsu**












Cuore (2007)	×	•	×	•	-	-	-
Materia (2006)	×	•	×	•	-	-	-
Sirion (2005)	×	•	×	•	-	-	-
Terios (2005)	×	•	×	•	-	-	-
Trevis (2005)	×	•	×	•	-	-	-





**FIAT**

124 Spider (2016>)	×	-	-	-	-	-	-
500 (2008>)	×	•	×	•	-	-	-
500 3dr (2015>)	×	•	×	•	-	-	-
500 C (2009>)	×	•	×	•	-	-	-
500L (2013>)	×	•	×	•	-	-	-
500X (2015>)	×	•	×	•	-	-	-
Abarth 500 (2009>)	×	•	×	•	-	-	-
Abarth Grande Punto (2008 - 2011)	×	•	×	•	-	-	-
Abarth 595 (2018>)	×	!	-	!	-	-	-
Bravo (2007>)	×	•	×	•	-	-	-
Croma (2008)	×	•	×	•	-	-	-
Doblo (2007)	×	•	×	•	-	-	-
Doblo (2010>)	×	•	×	•	-	-	-
Punto (2014>)	×	•	×	•	-	-	-
Grande Punto (2006>)	×	•	×	•	-	-	-
Idea (2007)	×	•	×	•	-	-	-
Linea (2007)	×	•	×	•	-	-	-
Multipla (2007)	×	•	×	•	-	-	-
Panda (2012>)	×	•	×	•	-	-	-
Qubo (2008>)	×	•	×	•	-	-	-
Scudo II (2007)	×	•	×	•	•	×	•
Sedici (2006)	×	•	×	•	-	-	-
Stilo (2007)	×	•	×	•	-	-	-
Tipo (2016>)	×	•	×	•	-	-	-
 Tipo (2018>)	×	!	×	!	-	-	-
Ulysse (2003)	×	•	×	•	•	×	•






**Ford**

B-Max (2012>)	×	•	×	•	-	-	-
---------------	---	---	---	---	---	---	---

C-Max (2003 - 2010)	✗	•	✗	•	-	-	-
C-Max (2010 - 2012)	✗	•	✗	•	-	-	-
C-Max (2013>)	✗	•	✗	•	-	-	-
 Grand C-Max (2012)	✗	•	✗	•	-	-	-
 Grand C-Max (2018>)	✗	•	✗	•	•	•	•
 EcoSport (2015>)	✗	•	✗	•	-	-	-
 EcoSport (2018>)	✗	•	✗	•	-	-	-
Edge (2016>)	✗	•	✗	•	-	-	-
Edge Sport (2018>)	✗	•	✗	•	-	-	-
Fiesta (2004 - 2008)	✗	•	✗	•	-	-	-
Fiesta (2008>)	✗	•	✗	•	-	-	-
 Fiesta 3dr (2018>)	✗	!	✗	!	-	-	-
 Fiesta 5dr (2018>)	✗	!	✗	!	-	-	-
Focus (1998 - 2005)	✗	•	✗	•	-	-	-
Focus (2005 - 2009)	✗	•	✗	•	-	-	-
Focus (2010 - 2015)	✗	•	✗	•	-	-	-
Focus (2015>)	✗	•	✗	•	-	-	-
 Focus EV (2015>)	✗	•	✗	•	-	-	-
Focus (2017>)	✗	•	✗	•	-	-	-
Focus Estate (2017>)	✗	•	✗	•	-	-	-
 Focus (2018>)	✗	•	✗	•	-	-	-
Galaxy (2006 - 2015)	✗	•	✗	•	•	•	•
Galaxy (2016>)	✗	•	✗	•	✗	•	✗
Ka (2009 - 2016)	✗	•	✗	•	-	-	-
Ka+ (2016>)	✗	•	✗	•	-	-	-
 Ka+ (2018>)	✗	!	✗	!	-	-	-
Kuga (2013>)	✗	•	✗	•	-	-	-
 Kuga (2018>)	✗	•	✗	•	-	-	-
Maverick (2007)	✗	•	✗	•	-	-	-
Mondeo Estate (2002 - 2007)	✗	•	✗	•	-	-	-
Mondeo Estate (2007 - 2015)	✗	•	✗	•	-	-	-
Mondeo Estate (2017>)	✗	•	✗	•	-	-	-
Mondeo Hatchback (2007 - 2015)	✗	•	✗	•	-	-	-
Mondeo Hatchback (2017>)	✗	•	✗	•	-	-	-
Mondeo Saloon (2007 - 2015)	✗	•	✗	•	-	-	-
Mondeo (2007 - 2010)	✗	•	✗	•	-	-	-
Mondeo (2014>)	✗	•	✗	•	-	-	-
 Mondeo (2018>)	✗	•	✗	•	-	-	-



 Mondeo Turnier (2010)	✗	•	✗	•	-	-	-
 Mondeo Vignale (2018>)	✗	•	✗	•	-	-	-
Mondeo Ranger (2011)	✗	•	✗	•	-	-	-
S-Max (2006 - 2015)	✗	•	✗	•	-	-	-
S-Max (2016>)	✗	•	✗	•	✗	-	✗
 S-Max (2018>)	✗	•	✗	•	•	-	•
ST (2014>)	✗	•	✗	•	-	-	-
Tourneo Connect (2013)	✗	•	✗	•	-	-	-
Tourneo Custom (2012)	✗	•	✗	•	-	•	-
Transit Connect (2006)	✗	•	✗	•	-	-	-
Transit Kombi (2011)	✗	•	✗	•	-	-	-
Transit Custom (2012)	✗	•	✗	•	•	•	-
 Vignale (2018>)	✗	•	✗	•	-	-	-

Honda

Accord Saloon (2008>)	✗	•	✗	•	-	-	-
Accord Tourer (2008>)	✗	•	✗	•	-	-	-
City (2009)	✗	•	✗	•	-	-	-
Civic (2006 - 2011)	✗	•	✗	•	-	-	-
Civic (2012>)	✗	•	✗	•	-	-	-
 Civic (2018>)	✗	!	✗	!	-	-	-
Civic Type R (2007 - 2010)	✗	•	✗	•	-	-	-
Civic Hybrid Saloon (2006 - 2010)	✗	•	✗	•	-	-	-
 Civic Prestige 5dr (2018>)	✗	•	✗	•	-	-	-
Civic Tourer (2014>)	✗	•	✗	•	-	-	-
CR-V (2007 - 2013)	✗	•	✗	•	-	-	-
CR-V (2012>)	✗	•	✗	•	-	-	-
 CR-V S Plus (2018>)	✗	!	✗	!	-	-	-
CR-Z (2010>)	✗	•	✗	•	-	-	-
Elysion (2012>)	✗	•	✗	•	•	•	-
FRV (2005 - 2011)	✗	•	✗	•	-	-	-
HR-V (2015>)	✗	•	✗	•	-	-	-
 HR-V (2018>)	✗	!	✗	!	-	-	-
Insight (2009>)	✗	•	✗	•	-	-	-
Jazz (2001 - 2008)	✗	•	✗	•	-	-	-
Jazz (2008 - 2015)	✗	•	✗	•	-	-	-
Jazz (2016>)	✗	•	✗	•	-	-	-
 Jazz (2018>)	✗	!	✗	!	-	-	-

 Jazz Sport (2018>)	X	•	X	•	-	-	-
Legend (2006 - 2010)	X	•	X	•	-	-	-
Odyssey (2010>)	X	•	X	•	-	-	-

## Hyundai

Accent (2002)	X	•	X	•	-	-	-
Coupe (2001)	X	•	X	•	-	-	-
Elantra (2002)	X	•	X	•	-	-	-
Excel (2002)	X	•	X	•	-	-	-
Getz (2002 - 2005)	X	•	X	•	-	-	-
Getz (2005 - 2011)	X	•	X	•	-	-	-
Grandeur (2005)	X	•	X	•	-	-	-
i10 (2008>)	X	•	X	•	-	-	-
i10 Hatch (2008>)	X	•	X	•	-	-	-
i10 (2018>)	X	•	X	•	-	-	-
i20 (2015>)	X	•	X	•	-	-	-
i20 Hatch (2009>)	X	•	X	•	-	-	-
i30 (2012 - 2015)	X	•	X	•	-	-	-
i30 (2015>)	X	•	X	•	-	-	-
 i30 (2018>)	X	!	X	!	-	-	-
i40 (2011>)	X	•	X	•	-	-	-
i40 (2018>)	X	•	X	•	-	-	-
i800/H1 (2008>)	X	•	X	•	X	X	X
Ioniq (2016>)	X	•	X	•	-	-	-
iX20 (2011>)	X	•	X	•	-	-	-
iX20 (2018>)	X	•	X	•	-	-	-
iX35 (2010>)	X	•	X	•	-	-	-
iX55 (2009>)	X	•	X	•	-	-	-
 Kona (2018>)	X	•	X	•	-	-	-
Matrix (2008)	X	•	X	•	-	-	-
Pony (2002)	X	•	X	•	-	-	-
Santa Fe (2002)	X	•	X	•	-	-	-
Santa Fe (2007 - 2012)	X	•	X	•	X	-	X
Santa Fe (2012>)	X	•	X	•	•	•	•
Santa Fe (2018>)	X	•	X	•	-	-	-
Tucson (2004>)	X	•	X	•	-	-	-
Tucson (2010>)	X	•	X	•	-	-	-

 Tucson (2015>)	X	•	X	•	-	-	-
Tucson (2018>)	X	•	X	•	-	-	-
Veloster (2012>)	X	•	X	•	-	-	-
Verna (2002)	X	•	X	•	-	-	-



## Infiniti

EX SUV (2009>)	X	•	X	•	-	-	-
FX SUV (2009>)	X	•	X	•	-	-	-
G Coupe (2009>)	X	X	X	•	-	-	-
G Saloon (2009>)	X	•	X	•	-	-	-
G 70 (2016>)	X	X	X	•	-	-	-
M Saloon (2010>)	X	•	X	•	-	-	-
Q50 (2016>)	X	•	X	•	-	-	-

## Isuzu

D-Max (2007)	X	•	X	•	-	-	-
--------------	---	---	---	---	---	---	---

## Jaguar






 E-Pace (2018>)	X	!	X	!	-	-	-
F-Pace (2016>)	X	•	X	•	-	-	-
F-Type Coupe (2014>)	X	-	-	-	-	-	-
S-Type (2002)	X	•	X	•	-	-	-
X-Type (2001 - 2010)	X	•	X	•	-	-	-
X-Type Estate (2004 - 2010)	X	•	X	•	-	-	-
XE (2015>)	X	•	X	•	-	-	-
XF (2008>)	X	•	X	•	-	-	-
XF (2009>)	X	•	X	•	-	-	-
XF (2015>)	X	•	X	•	-	-	-
 XF (2018>)	X	•	X	•	-	-	-
XF R (2009>)	X	•	X	•	-	-	-
XF Sportbrake (2013>)	X	•	X	•	-	-	-
XJ (2003)	X	•	X	•	-	-	-
XJ (2010>)	X	•	X	•	-	-	-
XJ (2018>)	X	•	X	•	-	-	-





**Jeep**

XK Coupe (2006>)	x	•	x	•	-	-	-
XK Convertible (2006>)	x	•	x	•	-	-	-
XK R (2006>)	x	•	x	•	-	-	-

Cherokee (2014>)	x	•	x	•	-	-	-
Cherokee (2018>)	x	•	x	•	-	-	-
Commander (2006)	x	•	x	•	-	-	-
Compass (2011>)	x	•	x	•	-	-	-
Grand Cherokee (2010>)	x	•	x	•	-	-	-
Grand Cherokee (2018>)	x	•	x	•	-	-	-
Grand Patriot (2007)	x	•	x	•	-	-	-
Renegade (2015>)	x	•	x	•	-	-	-
Wrangler 5dr (2007>)	x	•	x	•	-	-	-
Wrangler (2011)	x	•	x	•	-	-	-
Wrangler (2018)	x	•	x	•	-	-	-

**Kia**


Carens (2006)	x	•	x	•	-	-	-
Carens (2013>)	x	•	x	•	•	•	-
Carnival (2006)	x	•	x	•	•	•	•
Cee'D (2006)	x	•	x	•	-	-	-
 Cee'D Hatch (2012>)	x	•	x	•	-	-	-
 Cee'D Hatch (2018>)	x	•	x	•	-	-	-
Magentis (2002 - 2005)	x	•	x	•	-	-	-
Mentor (2002)	x	•	x	•	-	-	-
 Niro (2018>)	x	•	x	•	-	-	-
Opirus (2003)	x	•	x	•	-	-	-
Optima (2011 - 2015)	x	•	x	•	-	-	-
Optima (2016>)	x	•	x	•	-	-	-
Picanto (2004>)	x	•	x	•	-	-	-
Picanto (2011>)	x	•	x	•	-	-	-
 Picanto (2018>)	x	•	x	•	-	-	-
Rio (2012>)	x	•	x	•	-	-	-
 Rio (2018>)	x	•	x	•	-	-	-
Sephia (2002)	x	•	x	•	-	-	-

Shuma (2002)	x	•	x	•	-	-	-
Sorento (2010 - 2014)	x	•	x	•	-	-	-
Sorento (2015>)	x	•	x	•	•	•	-
 Soul (2009>)	x	•	x	•	-	-	-
 Soul EV (2015>)	x	•	x	•	-	-	-
Soul (2018>)	x	•	x	•	-	-	-
Spectra (2002)	x	•	x	•	-	-	-
Sportage (2004)	x	•	x	•	-	-	-
Sportage (2011 - 2015)	x	•	x	•	-	-	-
Sportage (2016>)	x	•	x	•	-	-	-
 Sportage (2018>)	x	•	x	•	-	-	-
 Stonic (2018>)	x	•	x	•	-	-	-
Venga (2009>)	x	•	x	•	-	-	-

**Lancia**

Delta (2008>)	x	•	x	•	-	-	-
Delta (2011>)	x	•	x	•	-	-	-
Flavia (2012)	x	•	x	•	-	-	-
Musa (2004)	x	•	x	•	-	-	-
Phedra (2002)	x	•	x	•	-	-	-
Thema (2011>)	x	•	x	•	-	-	-
Voyager (2010>)	x	•	x	•	•	•	-
Ypsilon (2003)	x	•	x	•	-	-	-
Ypsilon (2012>)	x	•	x	•	-	-	-

**Land Rover**

Discovery 4 (2009>)	x	•	x	•	•	•	-
Discovery 5 (2016)	x	•	x	•	•	•	-
 Discovery 5 (2018>)	x	•	x	•	•	•	-
Discovery Sport (2015>)	x	•	x	•	•	•	-
Discovery Sport (2018>)	x	•	x	•	-	-	-
Freelander 2 (2006>)	x	•	x	•	-	-	-
Range Rover (2002 - 2012)	x	•	x	•	-	-	-
Range Rover (2013>)	x	•	x	•	-	-	-
Range Rover Evoque 3dr (2011>)	x	•	x	•	-	-	-
Range Rover Evoque 5dr (2011>)	x	•	x	•	-	-	-
Range Rover Evoque 3dr (2018>)	x	!	x	!	-	-	-

Range Rover Evoque 5dr (2018>)	x	!	x	!	-	-	-
Range Rover Sport (2005 - 2012)	x	.	x	.	-	-	-
Range Rover Sport (2013>)	x	.	x	.	.	.	-
Range Rover Sport (2018>)	x	.	x	.	.	.	-
Range Rover Velar (2017)	x	.	x	.	-	-	-
 Range Rover Velar (2018>)	x	.	x	.	-	-	-
Range Rover Vogue (2018>)	x	.	x	.	-	-	-

**Lexus**

CT (2011>)	x	.	x	.	-	-	-
CT (2018>)	x	.	x	.	-	-	-
GS (2000 - 2013>)	x	.	x	.	-	-	-
 GSh (2013>)	x	.	x	.	-	-	-
IS Saloon (2005 - 2012)	x	.	x	.	-	-	-
IS Saloon (2018>)	x	.	x	.	-	-	-
LS430 (2000)	x	.	x	.	-	-	-
 LS500h (2018>)	x	.	x	.	-	-	-
NX (2014>)	x	.	x	.	-	-	-
NX Sport (2018>)	x	.	x	.	-	-	-
RC 3dr (2018>)	x	!	x	!	-	-	-
RX300/RX400 (2006)	x	.	x	.	-	-	-
RX450h (2009)	x	.	x	.	-	-	-
RX (2010>)	x	.	x	.	-	-	-
RX (2018>)	x	.	x	.	-	-	-

**Maserati**


Quattroporte (2008)	x	.	x	.	-	-	-
Gran Turismo (2008)	x	.	x	.	-	-	-

**Maybach**


W240/V240 (2002)	x	.	x	.	-	-	-
------------------	---	---	---	---	---	---	---

**Mazda**





2 (2015>)	x	.	x	.	-	-	-
-----------	---	---	---	---	---	---	---

2 (2007 - 2015)	x	.	x	.	-	-	-
3 Hatchback (2014>)	x	.	x	.	-	-	-
3 Hatchback (2009 - 2013)	x	.	x	.	-	-	-
3 Saloon (2009 - 2013)	x	.	x	.	-	-	-
3 Hatch (2014>)	x	.	x	.	-	-	-
323 (2001)	x	.	x	.	-	-	-
5 (2005 - 2010)	x	.	x	.	-	-	-
6 Estate (2008 - 2012)	x	.	x	.	-	-	-
6 Estate (2012>)	x	.	x	.	-	-	-
6 Estate (2018>)	x	.	x	.	-	-	-
6 Hatch (2007 - 2012)	x	.	x	.	-	-	-
6 Saloon (2007 - 2009)	x	.	x	.	-	-	-
6 Saloon (2012>)	x	.	x	.	-	-	-
6 (2002 - 2008)	x	.	x	.	-	-	-
CX-3 (2015>)	x	.	x	.	-	-	-
 CX-5 (2011>)	x	.	x	.	-	-	-
 CX-5 (2018>)	x	.	x	.	-	-	-
CX-7 (2007 - 2011)	x	.	x	.	-	-	-
Demio (2007)	x	.	x	.	-	-	-
MPV (2002)	x	.	x	.	-	-	-
MX-5 (1998 - 2005)	x	-	-	-	-	-	-
MX-5 (2015>)	x	-	-	-	-	-	-
Premacy (2001)	x	.	x	.	-	-	-
RX-8 (2003)	x	.	x	.	-	-	-
Tribute (2001)	x	.	x	.	-	-	-
Verisa (2004)	x	.	x	.	-	-	-

**Mercedes-Benz**

A Class (2001 - 2005)	x	.	x	.	-	-	-
A Class (2005 - 2012)	x	.	x	.	-	-	-
A-Class (2013>)	x	.	x	.	-	-	-
B-Class (2005)	x	.	x	.	-	-	-
B-Class (2011>)	x	.	x	.	-	-	-
 B-Class EV (2015>)	x	.	x	.	-	-	-
C-Class (2000)	x	.	x	.	-	-	-
C-Class (2008>)	x	.	x	.	-	-	-
C-Class Coupe (2011>)	x	.	x	.	-	-	-
C-Class Estate (2008>)	x	.	x	.	-	-	-



C-Class Estate (2015>)	X	•	X	•	-	-	-
Citan (2012)	X	•	X	•	-	-	-
CLA (2013>)	X	•	X	•	-	-	-
CLC (2008)	X	•	X	•	-	-	-
CLK (2002 - 2010)	X	•	X	•	-	-	-
CLS Coupe (2004)	X	•	X	•	-	-	-
CLS Coupe (2011>)	X	!	X	!	-	-	-
 CLS Coupe (2018>)	X	!	X	!	-	-	-
CLS Shooting Brake (2012>)	X	•	X	•	-	-	-
 E-Class Coupe (2018>)	X	•	X	•	-	-	-
E-Class Coupe (2009>)	X	•	X	•	-	-	-
E-Class (2002)	X	•	X	•	-	-	-
E-Class (2006 - 2009)	X	•	X	•	-	-	-
E-Class Saloon (2009 - 2012)	X	•	X	•	-	-	-
E-Class Saloon (2013>)	X	•	X	•	-	-	-
E-Class Estate (2013>)	X	•	X	•	-	-	-
 E-Class Estate (2018>)	X	•	X	•	-	-	-
GL Class (2006 - 2012)	X	•	X	•	-	-	-
GL Class (2012>)	X	•	X	•	X	-	X
GLA (2014>)	X	•	X	•	-	-	-
GLC SUV (2018>)	X	•	X	•	-	-	-
GLE (2015>)	X	•	X	•	-	-	-
GLE (2018>)	X	•	X	•	-	-	-
GLK (2012)	X	•	X	•	-	-	-
GLS (2018>)	X	•	X	•	•	-	•
M (2011)	X	•	X	•	-	-	-
M-Klasse (1997 - 2005)	X	•	X	•	-	-	-
ML-Class (2005 - 2012)	X	•	X	•	-	-	-
ML-Class (2012>)	X	•	X	•	-	-	-
R-Class (2005 - 2012)	X	•	X	•	-	-	-
S Class (2005 - 2015)	X	•	X	•	-	-	-
SL Class (2011>)	X	-	-	-	-	-	-
SLK (2011>)	X	-	-	-	-	-	-
S-Class (2006 - 2013)	X	•	X	•	-	-	-
S-Class (2015>)	X	•	X	•	-	-	-
 S-Class (2018>)	X	•	X	•	-	-	-
Sprinter (2006)	X	•	X	•	-	-	-
V-Class (2014>)	X	•	X	•	•	•	•

MG

V-Class (2018>)	X	•	X	•	•	•	•
Vaneo (2001 - 2005)	X	•	X	•	-	-	-
Viano (2003 - 2010)	X	•	X	•	•	-	•
Vito (2010)	X	•	X	•	•	•	-
25 (1999 - 2005)	X	•	X	•	-	-	-
GS (2016>)	X	•	X	•	-	-	-
MG3 (2013 - 2015)	X	•	X	•	-	-	-
MG3 (2016>)	X	•	X	•	-	-	-
Streetwise (1999 - 2005)	X	•	X	•	-	-	-
ZR (2001 - 2005)	X	•	X	•	-	-	-
ZT (2003 - 2006)	X	•	X	•	-	-	-

MINI





Countryman (2010>)	X	•	X	•	-	-	-
Countryman 4 (2010>)	X	•	X	•	-	-	-
Countryman 5 (2010>)	X	•	X	•	-	-	-
Countryman (2014>)	X	•	X	•	-	-	-
R56 (2010>)	X	•	X	•	-	-	-
R57 (2009>)	X	•	X	•	-	-	-
Hatchback (2006 - 2014)	X	•	X	•	-	-	-
Hatchback (2014>)	X	•	X	•	-	-	-
Coupe (2009>)	X	-	-	-	-	-	-
Club Man (2007)	X	•	X	•	-	-	-
Hatchback 3Dr (2014>)	X	•	-	-	-	-	-
Hatchback 5dr (2015>)	X	•	X	•	-	-	-
Paceman (2013>)	X	•	X	•	-	-	-
5dr (2015>)	X	•	X	•	-	-	-

Mitsubishi

ASX (2010>)	X	•	X	•	-	-	-
Colt (2004 - 2008)	X	•	X	•	-	-	-
Colt (2007 - 2013)	X	•	X	•	-	-	-

Grandis (2004 - 2011)	×	●	×	●	-	-	-
Lancer (2007 - 2011)	×	●	×	●	-	-	-
Lancer Evo (2004)	×	●	-	●	-	-	-
Lancer Ralliart (2009 - 2011)	×	●	×	●	-	-	-
Lancer Sportback (2008 - 2012)	×	●	×	●	-	-	-
Mirage (2014>)	×	●	×	●	-	-	-
Outlander (2003)	×	●	×	●	-	-	-
Outlander (2006 - 2013)	×	●	×	●	-	-	-
Outlander (2013>)	×	●	×	●	-	-	-
⚡ Outlander PHEV (2015>)	×	●	×	●	-	-	-
Pajero (2007)	×	●	×	●	-	-	-
Shogun (2007>)	×	●	×	●	-	-	-

**Nissan**



Acenta (2012)	×	●	×	●	-	-	-
Almera (2000)	×	●	×	●	-	-	-
Juke (2010>)	×	●	×	●	-	-	-
 Juke 3dr (2018>)	×	!	×	!	-	-	-
 Juke 5dr (2018>)	×	!	×	!	-	-	-
⚡ Leaf EV (2011>)	×	●	×	●	-	-	-
 ⚡ Leaf EV (2018>)	×	!	×	!	-	-	-
Maxima (1999)	×	●	×	●	-	-	-
Micra (2000)	×	●	×	●	-	-	-
Micra (2011>)	×	●	×	●	-	-	-
 Micra (2018>)	×	!	×	!	-	-	-
Murano (2003)	×	●	×	●	-	-	-
Murano (2016>)	×	●	×	●	-	-	-
Navara (2005)	×	●	×	●	-	-	-
Note (2004 - 2013)	×	●	×	●	-	-	-
Note (2014>)	×	●	×	●	-	-	-
Pathfinder (2007)	×	●	×	●	-	-	-
Pixo (2009)	×	●	×	●	-	-	-
Primera (1996-2002)	×	●	×	●	-	-	-
Pulsar (2015>)	×	●	×	●	-	-	-
Qashqai +2 (2008 - 2015)	×	●	×	●	●	●	-
Qashqai (2007 - 2013)	×	●	×	●	-	-	-
Qashqai (2014>)	×	●	×	●	-	-	-
Qashqai (2018>)	×	●	×	●	-	-	-

Quest MPV (2012>)	×	●	×	●	●	●	-
Tiida (2004)	×	●	×	●	-	-	-
2008 X-Trail (2001)	×	●	×	●	-	-	-
2008 X-Trail (2007 - 2015)	×	●	×	●	-	-	-
X-Trail (2015>)	×	●	×	●	×	-	×
X-Trail (2018>)	×	!	×	!	-	-	-

**Opel**

Adam (2013>)	×	●	×	●	-	-	-
Agila (2002)	×	●	×	●	-	-	-
Agila (2008>)	×	●	×	●	-	-	-
⚡ Ampera (2011>)	×	●	×	●	-	-	-
Antara (2006 - 2015)	×	●	×	●	-	-	-
Astra (2004 - 2010)	×	●	×	●	-	-	-
Astra 5dr (2010>)	×	●	×	●	-	-	-
Astra (2015>)	×	●	×	●	-	-	-
Astra Estate (2010>)	×	●	×	●	-	-	-
Astra GTC (2011>)	×	●	×	●	-	-	-
Caravan (2004)	×	●	×	●	-	-	-
Combo (2001)	×	●	×	●	-	-	-
Corsa 3 dr Hatch (2006 - 2015)	×	●	×	●	-	-	-
Corsa 5 dr Hatch (2006 - 2015)	×	●	×	●	-	-	-
Corsa 5dr (2015>)	×	●	×	●	-	-	-
Corsa C (2000)	×	●	×	●	-	-	-
Corsa D (2006>)	×	●	×	●	-	-	-
Corsa VXR (2007>)	×	●	×	●	-	-	-
Insignia Hatch (2008>)	×	●	×	●	-	-	-
Insignia Saloon (2009>)	×	●	×	●	-	-	-
Insignia Sports Tourer (2009>)	×	●	×	●	-	-	-
Karl (2015>)	×	●	×	●	-	-	-
Meriva (2002)	×	●	×	●	-	-	-
Meriva (2010>)	×	●	×	●	-	-	-
Mokka (2012>)	×	●	×	●	-	-	-
Signum (2003-2008)	×	●	×	●	-	-	-
Vectra (2002 - 2008)	×	●	×	●	-	-	-
Vectra (2005 - 2014)	×	●	×	●	-	-	-
Vivaro (2001)	×	●	×	●	-	-	-
Zafira (2005 - 2014)	×	●	×	●	●	●	-






Peugeot

Zafira VXR (2005>)	x	.	x	.	.	.	-
Zafira Tourer (2012>)	x	.	x	.	.	.	-
107 (2005 - 2014)	x	.	x	.	-	-	-
108 3dr (2014)	x	.	-	.	-	-	-
108 5dr (2014)	x	.	-	.	-	-	-
108 (2015>)	x	.	x	.	-	-	-
 108 (2018>)	x	!	x	!	-	-	-
206 (1998)	x	.	x	.	-	-	-
206 3dr (2004 - 2009)	x	.	x	.	-	-	-
207 3dr (2006 - 2012)	x	.	x	.	-	-	-
207 5dr (2006 - 2012)	x	.	x	.	-	-	-
208 3dr (2012>)	x	.	x	.	-	-	-
208 5dr (2012>)	x	.	x	.	-	-	-
307 (2001 - 2008)	x	.	x	.	-	-	-
307 Estate (2002 - 2007)	x	.	x	.	-	-	-
308 (2014>)	x	.	x	.	-	-	-
308 Hatch (2007 - 2014)	x	.	x	.	-	-	-
308 SW (2008 - 2015)	x	.	x	.	-	-	-
308 SW (2015>)	x	.	x	.	-	-	-
 308 (2018>)	x	!	x	!	-	-	-
406 (2000)	x	.	x	.	-	-	-
407 (2004 - 2011)	x	.	x	.	-	-	-
407 (2010)	x	.	x	.	-	-	-
407 SW (2004 - 2011)	x	.	x	.	-	-	-
508 (2011>)	x	.	x	.	-	-	-
607 (2000)	x	.	x	.	-	-	-
807 (2002 - 2010)	x	.	x	.	.	.	.
1007 (2005)	x	.	x	.	-	-	-
2008 (2013>)	x	.	x	.	-	-	-
2008 (2018>)	x	!	x	!	-	-	-
3008 (2009 - 2016)	x	.	x	.	-	-	-
3008 (2017>)	x	.	x	.	-	-	-
3008 (2018>)	x	.	x	.	-	-	-
4007 (2007 - 2012)	x	.	x	.	-	-	-
4008 (2012)	x	.	x	.	-	-	-
5008 (2009>)	x	.	x	.	x	-	x

Pontiac



5008 (2011>)	x	.	x	.	.	.	-
207 SW (2007 - 2012)	x	.	x	.	-	-	-
208 5DR (2013>)	x	.	x	.	-	-	-
308 SW (2008 - 2015)	x	.	x	.	-	-	-
308 SW (2015>)	x	.	x	.	-	-	-
508 RXH (2013>)	x	.	x	.	-	-	-
508 SW (2011>)	x	.	x	.	-	-	-
Bipper (2008>)	x	.	x	.	-	-	-
Expert Tepee (2007 - 2016)	x	.	x	.	x	x	x
Partner Combi (2004 - 2010)	x	.	x	.	-	-	-
Partner Teepce (2008>)	x	.	x	.	-	-	-
RCZ (2011>)	x	.	x	.	-	-	-
Traveller (2016>)	x	.	x	.	.	.	.
Traveller (2018>)	x	.	x	.	.	.	.




Porsche

Grand AM	x	.	x	.	-	-	-
Cayenne (2003)	x	.	x	.	-	-	-
 Cayenne (2011>)	x	.	x	.	-	-	-
 Cayenne (2018>)	x	.	x	.	-	-	-
 Cayenne E-Hybrid (2015>)	x	.	x	.	-	-	-
Macan (2014)	x	.	x	.	-	-	-
 Macan Turbo (2018>)	x	.	x	.	-	-	-
Panamera (2009>)	x	.	-	.	-	-	-
Panamera (2018>)	x	.	-	.	-	-	-
Panamera Estate (2018>)	x	.	-	.	-	-	-
 Panamera E-Hybrid (2015>)	x	.	x	.	-	-	-

Renault

Avantime (2001)	x	.	x	.	-	-	-
Captur (2013>)	x	.	x	.	-	-	-
Captur (2018>)	x	.	x	.	-	-	-
Clio Sport (2013>)	x	.	x	.	-	-	-
Clio Sport (2006 - 2012)	x	.	x	.	-	-	-



Clio Sport Tourer (2007 - 2012)	×	●	×	●	-	-	-
Clio Sport Tourer (2013>)	×	●	×	●	-	-	-
Clio Sport Tourer (2018>)	×	●	×	●	-	-	-
Clio (1998 - 2003)	×	●	×	●	-	-	-
Clio (2005 - 2012)	×	●	×	●	-	-	-
Clio (2013>)	×	●	×	●	-	-	-
Clio (2018>)	×	!	×	!	-	-	-
Espace (2003 - 2012)	×	●	×	●	●	-	●
Fluence (2010)	×	●	×	●	-	-	-
Grand Espace (2000)	×	●	×	●	●	-	●
Grand Espace (2002 - 2012)	×	●	×	●	●	-	●
Grand Modus (2008 - 2012)	×	●	×	●	-	-	-
Grand Scenic (2009)	×	●	×	●	-	-	-
Kangoo (1999)	×	●	×	●	-	-	-
Kangoo (2008 - 2013)	×	●	×	●	-	-	-
Kadjar (2015>)	×	●	×	●	-	-	-
Kadjar (2018>)	×	●	×	●	-	-	-
 Koleos (2018>)	×	●	×	●	-	-	-
Laguna (2001)	×	●	×	●	-	-	-
Laguna (2008 - 2012)	×	●	×	●	-	-	-
Laguna GrandTour (2010)	×	●	×	●	-	-	-
Laguna Sport Tourer (2008 - 2012)	×	●	×	●	-	-	-
Megane (1999)	×	●	×	●	-	-	-
Megane (2007)	×	●	×	●	-	-	-
Megane (2017>)	×	●	×	●	-	-	-
Megane Coupe (2003)	×	●	×	●	-	-	-
Megane Grand Tour (1999 - 2003)	×	●	×	●	-	-	-
Megane Grand Tour (2009)	×	●	×	●	-	-	-
Megane Hatch (2002 - 2009)	×	●	×	●	-	-	-
Megane Hatch (2008>)	×	●	×	●	-	-	-
Megane Hatch (2018>)	×	●	×	●	-	-	-
Megane Scenic (2003)	×	●	×	●	-	-	-
Megane Sport Tourer (2009>)	×	●	×	●	-	-	-
 Megane Sport Tourer (2018>)	×	●	×	●	-	-	-
Modus (2004 - 2012)	×	●	×	●	-	-	-
Grand Modus (2008 - 2012)	×	●	×	●	-	-	-
Sandero (2012)	×	●	×	●	-	-	-
Scenic/Grand Scenic (1999)	×	●	×	●	-	-	-
Scenic (2002 - 2008)	×	●	×	●	-	-	-

Scenic (2003 - 2009)	×	●	×	●	-	-	-
Scenic (2009 - 2016)	×	●	×	●	●	-	-
 Scenic (2017>)	×	●	×	●	-	-	-
 Scenic (2018>)	×	●	×	●	-	-	-
Trafic (2001 - 2007)	×	●	×	●	-	●	-
Trafic (2010)	×	●	×	●	-	-	-
Twingo (1998 - 2007)	×	●	×	●	-	-	-
Twingo (2007 - 2014)	×	●	×	●	-	-	-
Twingo (2015>)	×	●	×	●	-	-	-
Twingo (2018>)	×	●	×	●	-	-	-
Vel Satis (2002)	×	●	×	●	-	-	-
 Zoe (2012)	×	●	×	●	-	-	-

**SAAB**

9-3 (2002 - 2012)	×	●	×	●	-	-	-
9-3 Sport Wagon (2005 - 2012)	×	●	×	●	-	-	-
9-3 X (2009 - 2012)	×	●	×	●	-	-	-
9-5 (2011 - 2012)	×	●	×	●	-	-	-
9-5 Estate (2005 - 2010)	×	●	×	●	-	-	-

**SEAT**

Alhambra (1995 - 2010)	×	●	×	●	●	-	-
Alhambra (2010>)	×	●	×	●	●	●	-
Altea (2004 - 2011)	×	●	×	●	-	-	-
Altea Freetrack4 (2007 - 2009)	×	●	×	●	-	-	-
Altea XL (2006 - 2011)	×	●	×	●	-	-	-
 Arona (2018>)	×	●	×	●	-	-	-
Arosa (1997 - 2004)	×	●	-	●	-	-	-
 Ateca Estate (2018>)	×	●	×	●	-	-	-
Cordoba Vario (1996 - 2002)	×	●	-	●	-	-	-
Exeo (2008 - 2014)	×	●	×	●	-	-	-
Exeo ST Estate (2008 - 2014)	×	●	×	●	-	-	-
Ibiza (1993 - 2002)	×	●	×	●	-	-	-
Ibiza (2002 - 2008)	×	●	×	●	-	-	-
Ibiza Cupra (2009>)	×	●	×	●	-	-	-
Ibiza FR (2009>)	×	●	×	●	-	-	-

Ibiza Hatch (2008 - 2013)	X	•	X	•	-	-	-
Inca (2000)	X	•	X	•	-	-	-
Leon Cupra (2007 - 2011)	X	•	X	•	-	-	-
Leon FR (2006 - 2012)	X	•	X	•	-	-	-
Leon Hatch (2005 - 2015)	X	•	X	•	-	-	-
Leon (1998)	X	•	X	•	-	-	-
Leon (2013>)	X	•	X	•	-	-	-
Leon Tourer ST (2018>)	X	•	X	•	-	-	-
Leon FR (2018>)	X	•	X	•	-	-	-
Mii (2011>)	X	•	X	•	-	-	-
Mii 3dr (2018>)	X	•	X	•	-	-	-
Mii 5dr (2018>)	X	•	X	•	-	-	-
Toledo (1994 - 2004)	X	•	X	•	-	-	-
Toledo (2013>)	X	•	X	•	-	-	-
Toledo (2018>)	X	!	X	!	-	-	-

## Skoda

Citigo (2011>)	X	•	X	•	-	-	-
Citigo 3dr (2018>)	X	•	X	•	-	-	-
Citigo 5dr (2018>)	X	•	X	•	-	-	-
Fabia (1999 - 2007)	X	•	X	•	-	-	-
Fabia (2015>)	X	•	X	•	-	-	-
Fabia (2018>)	X	!	X	!	-	-	-
Fabia Hatch (2007>)	X	•	X	•	-	-	-
Fabia Estate Combi (2008>)	X	•	X	•	-	-	-
Karoq (2018>)	X	•	X	•	-	-	-
Kodiaq (2018>)	X	•	X	•	-	-	-
Octavia (1996 - 2004)	X	•	X	•	-	-	-
Octavia Hatch (2004 - 2012)	X	•	X	•	-	-	-
Octavia Hatch (2013>)	X	•	X	•	-	-	-
Octavia Estate Combi (2005 - 2013)	X	•	X	•	-	-	-
Octavia Estate (2018>)	X	!	X	!	-	-	-
Octavia Scout (2007 - 2013)	X	•	X	•	-	-	-
Rapid (2013>)	X	•	X	•	-	-	-
Rapid (2018>)	X	!	X	!	-	-	-
Roomster (2006>)	X	•	X	•	-	-	-
Superb (2001 - 2008)	X	•	X	•	-	-	-

Superb (2008 - 2014)	X	•	X	•	-	-	-
Superb (2015>)	X	•	X	•	-	-	-
Superb Hatch (2018>)	X	!	X	!	-	-	-
Superb Combi/Estate (2008>)	X	•	X	•	-	-	-
Yeti (2009>)	X	•	X	•	-	-	-

## Smart

For Two Coupe (2007 - 2011)	X	-	-	-	-	-	-
For Two Coupe (2018>)	X	-	-	-	-	-	-
FourFour (2004 - 2006)	X	•	X	•	-	-	-
FourFour (2015>)	X	•	-	•	-	-	-
FourFour (2018>)	X	•	X	•	-	-	-

## Ssangyong

Actyon (2006 - 2011)	X	•	X	•	-	-	-
Korando (2011>)	X	•	X	•	-	-	-
Musso Pickup (2016)	X	•	X	•	-	-	-
Rexton (2014>)	X	•	X	•	-	-	-
Tivoli (2016>)	X	•	X	•	-	-	-
Turismo (2014>)	X	•	-	•	X	X	X

## Subaru

BRZ (2012>)	X	•	X	•	-	-	-
Forester (2003 - 2008)	X	•	X	•	-	-	-
Forester (2013>)	X	•	X	•	-	-	-
Impreza 5dr (2007 - 2012)	X	•	X	•	-	-	-
Impreza 5dr (2013>)	X	•	X	•	-	-	-
Justy (2004)	X	•	X	•	-	-	-
Legacy (2004)	X	•	X	•	-	-	-
Legacy (2012>)	X	•	X	•	-	-	-
Outback (2012>)	X	•	X	•	-	-	-
Sedan (2002 - 2004)	X	•	X	•	-	-	-
Wagon (2002 - 2004)	X	•	X	•	-	-	-
XV Hatchback (2011>)	X	•	X	•	-	-	-

**Suzuki**

Alto (2009>)	×	×	×	●	-	-	-
Baleno (2016>)	×	●	×	●	-	-	-
Grand Vitara (2002>)	×	●	×	●	-	-	-
Grand Vitara (2005>)	×	●	×	●	-	-	-
Ignis (2004)	×	●	×	●	-	-	-
Kizashi (2010)	×	●	×	●	-	-	-
Liana (2002)	×	●	×	●	-	-	-
Splash (2007>)	×	●	×	●	-	-	-
Swift (2004)	×	●	×	●	-	-	-
Swift Sport (2011>)	×	●	×	●	-	-	-
SX-4 (2006>)	×	●	×	●	-	-	-
SX-4 Saloon (2009>)	×	●	×	●	-	-	-
Vitara (2015>)	×	●	×	●	-	-	-
Wagon R+ (2002)	×	●	×	●	-	-	-

**TATA**




Indica Vista (2008)	×	●	×	●	-	-	-
---------------------	---	---	---	---	---	---	---

**Tesla**

Model S (2014>)	×	●	×	●	-	-	-
Model X (2016>)	×	●	×	●	●	×	●




**Toyota**

Auris (2007 - 2012)	×	●	×	●	-	-	-
Auris (2013>)	×	●	×	●	-	-	-
Avensis Hatch (2003 - 2011)	×	●	×	●	-	-	-
Avensis Tourer (2009>)	×	●	×	●	-	-	-
 Aygo (2018>)	×	●	×	●	-	-	-
Aygo (2014>)	×	●	×	●	-	-	-
Aygo 3dr (2005 - 2014)	×	●	×	●	-	-	-
Camry (2001)	×	●	×	●	-	-	-
Corolla (2002 - 2007)	×	●	×	●	-	-	-
C-HR (2018>)	×	●	×	●	-	-	-
EZ MPV (2013>)	×	●	×	●	-	-	-
GT86 (2012>)	×	●	×	●	-	-	-

GT86 (2018>)	×	!	-	!	-	-	-
Highlander (2013>)	×	●	×	●	-	-	-
IQ (2009)	×	●	×	●	-	-	-
Landcruiser (2002 - 2009)	×	●	×	●	-	-	-
Landcruiser (2009>)	×	●	×	●	-	-	-
 Landcruiser (2018>)	×	●	×	●	-	-	-
Previa (2000 - 2009)	×	●	×	●	-	-	-
⚡ Prius (2010>)	×	●	×	●	-	-	-
⚡ Prius 2 (2004 - 2010)	×	●	×	●	-	-	-
⚡ Prius 3 (2010 - 2016)	×	●	×	●	-	-	-
⚡ Prius 4 (2016>)	×	●	×	●	-	-	-
⚡ Prius Plus+ (2012>)	×	●	×	●	-	-	-
⚡ Prius PHEV 3 (2015>)	×	●	×	●	-	-	-
 ⚡ Prius (2018>)	×	●	×	●	-	-	-
RAV4 (2000 - 2006)	×	●	×	●	-	-	-
RAV4 (2013>)	×	●	×	●	-	-	-
RAV4 (2018>)	×	●	×	●	-	-	-
RAV4 MK3 (2006 - 2011)	×	●	×	●	-	-	-
Urban Cruiser (2009)	×	●	×	●	-	-	-
Verso (2009 - 2012)	×	●	×	●	-	-	-
Verso (2013>)	×	●	×	●	-	-	-
Yaris (1999 - 2005)	×	●	×	●	-	-	-
Yaris (2008 - 2011)	×	●	×	●	-	-	-
Yaris Hatch (2011>)	×	●	×	●	-	-	-
Yaris Hatch (2015>)	×	●	×	●	-	-	-
 Yaris Hatch (2018>)	×	●	×	●	-	-	-

**Vauxhall**






Adam (2013>)	×	●	×	●	-	-	-
Agila (2002)	×	●	×	●	-	-	-
Agila (2008>)	×	●	×	●	-	-	-
⚡ Ampera (2011>)	×	●	×	●	-	-	-
Antara (2006 - 2015)	×	●	×	●	-	-	-
Astra (2004 - 2010)	×	●	×	●	-	-	-
Astra (2015>)	×	●	×	●	-	-	-
Astra 5 dr (2010>)	×	●	×	●	-	-	-
Astra Estate (2010>)	×	●	×	●	-	-	-
Astra GTC (2011>)	×	●	×	●	-	-	-

 Astra Sport Tourer (2018>)	X	!	X	!	-	-	-
Caravan (2004)	X	•	X	•	-	-	-
Combo (2001)	X	•	X	•	-	-	-
Corsa 3dr Hatch (2006 - 2015)	X	•	X	•	-	-	-
Corsa 5dr Hatch (2006 - 2015)	X	•	X	•	-	-	-
Corsa 5dr (2015>)	X	•	X	•	-	-	-
Corsa C (2000)	X	•	X	•	-	-	-
Corsa D (2006>)	X	•	X	•	-	-	-
Corsa VXR (2007>)	X	•	X	•	-	-	-
 Crossland X (2018>)	X	•	X	•	-	-	-
 Grandland X (2018>)	X	•	X	•	-	-	-
Insignia Hatch (2008>)	X	•	X	•	-	-	-
Insignia Saloon (2009>)	X	•	X	•	-	-	-
Insignia Sports Tourer (2009>)	X	•	X	•	-	-	-
Karl (2015>)	X	•	X	•	-	-	-
Meriva (2002)	X	•	X	•	-	-	-
Meriva (2010>)	X	•	X	•	-	-	-
Mokka (2012>)	X	•	X	•	-	-	-
Mokka X (2018>)	X	•	X	•	-	-	-
Signum (2003 - 2008)	X	•	X	•	-	-	-
Vectra (2002 - 2008)	X	•	X	•	-	-	-
Vivaro (2001)	X	•	X	•	-	-	-
Viva (2015>)	X	•	X	•	-	-	-
Viva (2018>)	X	•	X	•	-	-	-
Zafira (2005 - 2014)	X	•	X	•	•	•	-
Zafira Tourer VXR (2005 - 2010)	X	•	X	•	•	•	-
Zafira Tourer (2012>)	X	•	X	•	•	•	-

**Volvo**

C30 (2006 - 2013)	X	•	X	•	-	-	-
C70 (2005)	X	•	X	•	-	-	-
S40 (2003 - 2012)	X	•	X	•	-	-	-
S60 (2010>)	X	•	X	•	-	-	-
S80 (2006>)	X	•	X	•	-	-	-
S90 (2016>)	X	•	X	•	-	-	-
V40 (1996 - 2004)	X	•	X	•	-	-	-
V40 (2012>)	X	•	X	•	-	-	-

**VW**

V40 (2017>)	X	•	X	•	-	-	-
V40 Cross County (2012>)	X	•	X	•	-	-	-
V40 Cross County (2018>)	X	!	X	!	-	-	-
V50 (2004 - 2012)	X	•	X	•	-	-	-
V60 (2010>)	X	•	X	•	-	-	-
 V60 PHEV (2015>)	X	•	X	•	-	-	-
V70 (2008>)	X	•	X	•	-	-	-
V90 (2016>)	X	•	X	•	-	-	-
 XC40 (2018>)	X	!	X	!	-	-	-
XC60 (2008>)	X	•	X	•	-	-	-
XC60 (2013>)	X	•	X	•	-	-	-
 XC60 (2018>)	X	!	X	!	-	-	-
XC70 (2000 - 2007)	X	•	X	•	-	-	-
XC70 (2007>)	X	•	X	•	-	-	-
XC90 (2002 - 2015)	X	•	X	•	•	•	-
XC90 (2016>)	X	•	X	•	X	-	X
 XC90 (2018>)	X	•	X	•	X	X	-
Amarok (2010)	X	•	X	•	-	-	-
Beetle (1998)	X	•	X	•	-	-	-
Beetle (2011>)	X	•	X	•	-	-	-
Beetle (2018>)	X	•	X	•	-	-	-
Bora (1998 - 2005)	X	•	X	•	-	-	-
Caddy (2000 - 2010)	X	•	X	•	-	-	-
Caddy (2010>)	X	•	X	•	X	-	X
Caddy Maxlife (2010 - 2015)	X	•	X	•	X	-	X
E-Golf Hatch Mk7 (2014>)	X	•	X	•	-	-	-
EOS (2006)	X	•	X	•	-	-	-
EOS (2010)	X	•	X	•	-	-	-
E-UPF (2014>)	X	•	X	•	-	-	-
Fox (2005)	X	•	X	•	-	-	-
Golf Hatch (2009 - 2012)	X	•	X	•	-	-	-
 Golf E (2014>)	X	•	X	•	-	-	-
Golf 4 (1997 - 2003)	X	•	X	•	-	-	-
Golf 4 Variant (1996 - 2006)	X	•	X	•	-	-	-
Golf Hatch Mk5 (2004 - 2008)	X	•	X	•	-	-	-
Golf Mk5 (2006 - 2009)	X	•	X	•	-	-	-

Golf Hatch (2008 - 2012)	×	×	×	●	-	-	-
Golf Hatch MK7 (2012>)	×	×	×	●	-	-	-
Golf Cabriolet (2009 - 2012)	×	×	×	●	-	-	-
⚡ Golf GTE Hatch Mk7 (2014>)	×	×	×	●	-	-	-
Golf Plus (2009 - 2011)	×	×	×	●	-	-	-
🚗 Golf Plus (2018>)	×	×	×	●	-	-	-
Golf SV (2017>)	×	×	×	●	-	-	-
Jetta (2011>)	×	×	×	●	-	-	-
Lupo (1999 - 2005)	×	●	-	-	-	-	-
LT (1999)	×	●	×	●	-	-	-
Multivan Caravelle (2008>)	×	×	×	●	●	●	-
New Beetle (1998 - 2002)	×	×	×	●	-	-	-
Passat (1996 - 2005)	×	×	×	●	-	-	-
Passat (2005 - 2010)	×	×	×	●	-	-	-
Passat (2010 - 2015)	×	×	×	●	-	-	-
Passat Estate (2005 - 2011)	×	×	×	●	-	-	-
Passat Estate (2011 - 2015)	×	×	×	●	-	-	-
Passat Estate (2015>)	×	×	×	●	-	-	-
Passat Saloon (2015>)	×	×	×	●	-	-	-
Passat Alltrack (2012>)	×	×	×	●	-	-	-
Passat CC (2008>)	×	×	×	●	-	-	-
Phaeton (2002)	×	×	×	●	-	-	-
Polo 3 (1994 - 2001)	×	×	×	●	-	-	-
Polo 4 (2005 - 2009)	×	×	×	●	-	-	-
Polo 5 (2009)	×	×	×	●	-	-	-
Polo 3dr (2009>)	×	×	×	●	-	-	-
Polo 5dr (2009>)	×	×	×	●	-	-	-
Polo 5dr (2015>)	×	×	×	●	-	-	-
🚗 Polo (2018>)	×	×	×	●	-	-	-
Scirocco (2008)	×	×	×	●	-	-	-
Scirocco (2011)	×	×	×	●	-	-	-
Scirocco (2018>)	×	●	-	-	-	-	-
Sharan (1998)	×	●	×	●	●	-	●
Sharan (2004)	×	●	×	●	-	-	-
Sharan (2010>)	×	×	×	●	●	●	-
Sharan (2018>)	×	×	×	●	●	●	-
T4 Caravelle (1999)	×	×	×	●	×	×	×
Multivan (1999 - 2003)	×	×	×	●	●	-	●

T5 Kombi (2003)	×	●	×	●	-	-	-
Multivan (2003)	×	●	×	●	●	-	●
Tiguan (2007 - 2016)	×	●	×	●	-	-	-
Tiguan (2016>)	×	●	×	●	-	-	-
🚗 Tiguan (2018>)	×	●	×	●	-	-	-
Touareg (2002 - 2010)	×	●	×	●	-	-	-
Touareg (2010>)	×	●	×	●	-	-	-
Touareg (2012>)	×	●	×	●	-	-	-
Touareg MK 1 (2009)	×	●	×	●	-	-	-
Touran (2003 - 2010)	×	●	×	●	-	-	-
Touran (2010 - 2015)	×	●	×	●	●	●	-
Touran (2016>)	×	●	×	●	-	-	●
🚗 T-ROC (2018>)	×	●	×	●	-	-	-
Transporter LT3 (2006)	×	●	×	●	-	-	-
UPF (2011>)	×	●	×	●	-	-	-
⚡ E - UP! (2014>)	×	●	×	●	-	-	-
⚡ E - UP! 3dr (2018>)	×	●	×	●	-	-	-
⚡ E - UP! 5dr (2018>)	×	●	×	●	-	-	-





Allison Baby UK Ltd,  
Venture Point, Towers Business Park  
Rugeley, Staffordshire, WS15 1UZ

bring the kids™

Share the joy at [joiebaby.com](http://joiebaby.com)

IM-001319C