



Instruction Manual

anchoTM

2-in-1 wind-up swing and rocker

Swing – Weight: birth up to 25 lb. (11.5 kg)
Height: birth up to 30 in. (76 cm)

Rocker – Weight: birth up to 20 lb. (9 kg)
Height: birth up to 27 in. (69 cm)



product
guide videos



IMPORTANT!

Read all instructions before assembling and using the product. Keep instructions for future use.

Contents:

- 3 Warranty Information
- 4 Warnings
- 8 Parts List
- 10 Assembling Swing
- 14 Using Buckle & Harness Straps
- 16 Rotating Seat
- 18 Using Wind-Up Handle
- 18 Starting & Stopping Swing
- 20 Adjusting Recline
- 20 Adjusting Handle
- 22 Using Rock-Stop Foot
- 22 Using Toys
- 22 Using Head Support
- 24 Removing Softgoods
- 26 Care & Maintenance

Child Usage Requirements

This product is suitable for use with children who meet the following requirements:

Swing – Weight: birth up to 25 lb. (11.5 kg)
Height: birth up to 30 in. (76 cm)

Rocker – Weight: birth up to 20 lb. (9 kg)
Height: birth up to 27 in. (69 cm)

Important:

Product Registration

Please fill in the information below. The model number and the date of manufacture are located on a label on the swing frame. Fill out the prepaid registration postcard attached to the product and mail it today. To register your product online, please visit: joiebaby.com/us/register-gear.

Model Name: _____

Model Number: _____

Date of Manufacture: _____

Date of Purchase: _____

register your
product online



Limited Warranty

We have purposely designed our high-quality products so that they can grow with both your child and your family. Because we stand by our product, our gear is covered by a custom limited warranty per product, starting from the day it was purchased. Please have the proof of purchase, model number, and date of manufacture available when you contact us. For warranty information, please visit: www.joiebaby.com/us.

Contact:

Joie Baby USA Consumer Service Contact Info.

Address: 70 Thousand Oaks Blvd., Morgantown, PA 19543

Email: info.us@joiebaby.com

Phone: 1-866-798-7866

WARNING

Failure to follow these warnings and instructions could result in serious injury or death.

FALL AND STRANGULATION HAZARDS:

- **Infants have suffered** head injuries falling from swings and rockers and have **STRANGLED** in the straps.
- **ALWAYS** use the restraints. Adjust them to fit snugly.
- **Stay near and watch the baby during use.** This product is not safe for sleep or unsupervised use. If the baby falls asleep, remove the baby as soon as possible and place the baby on a firm, flat sleep surface such as a crib or bassinet.
- **When using as a swing, DO NOT** move or lift the base with a child in the rocker.
- **STOP using as a swing**, when baby starts trying to climb out (approx. 9 months), has reached 25 lb. (11.5 kg), or has reached 30 in. (76 cm) tall, whichever comes first.

WARNING

Failure to follow these warnings and instructions could result in serious injury or death.

- **STOP using as a rocker** when baby starts trying to sit up (approx. 6 months), has reached 20 lb. (9 kg), or has reached 27 in. (69 cm) tall, whichever comes first.
- **NEVER** leave the child unattended. **ALWAYS** keep the child in view.
- **Fall Hazard:** Children have suffered head injuries falling from rockers. The child's activity can move the rocker. **NEVER** place the rocker on countertops, tables, or any other elevated surface. **ALWAYS** place the rocker on the floor.
- **Suffocation Hazard:** Babies have suffocated when seats tipped over on soft surfaces. The rocker can roll over on soft surfaces and suffocate the child. **NEVER** place the rocker on beds, sofas, cushions, or other soft surfaces.
- **Children have STRANGLED** in loose or partially buckled harness straps. Fully restrain the child at all times.

⚠ WARNING

Failure to follow these warnings and instructions could result in serious injury or death.

- **Fall Hazard:** The rocker can fall from a shopping cart. **DO NOT** use on a shopping cart.
- **NEVER** use the rocker as a means to transport an infant in a motor vehicle.
- **DO NOT** use the product if any parts are damaged, broken, torn, or missing.
- **DO NOT** use accessories or replacement parts other than those approved by Joie.
- **To avoid suffocation**, remove plastic bags and packaging materials before using this product. The plastic bags and packaging materials must be kept away from babies and children.
- **The upright position** is only for children who have developed enough upper body control to sit up without tipping forward.



⚠ WARNING

Failure to follow these warnings and instructions could result in serious injury or death.

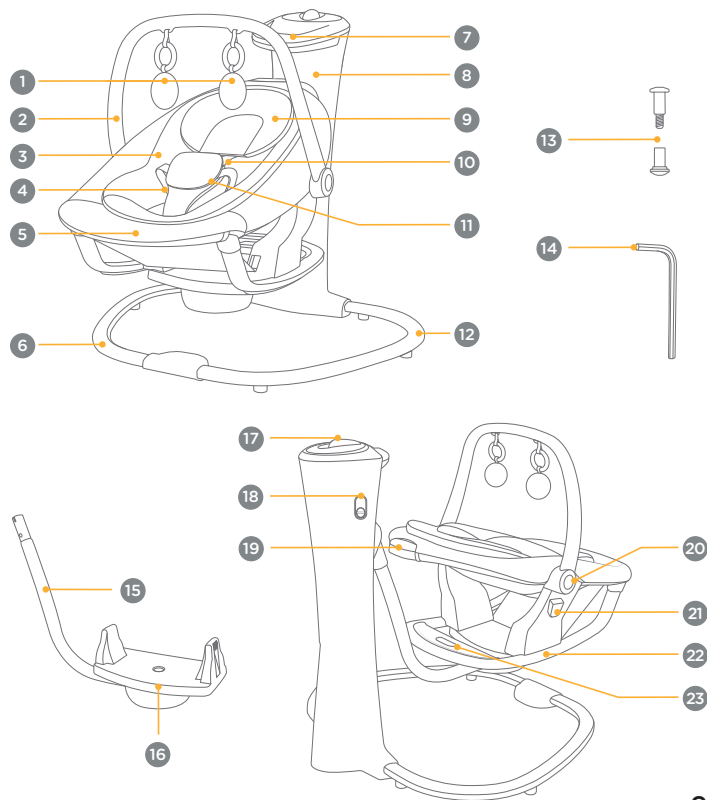
- **Suffocation Hazard:** Young infants have limited head and neck control. If the seat is too upright, the infant's head can drop forward and compress their airway.
- **ALWAYS** keep the swing seat fully reclined until the infant is at least 4 months old **AND** can hold up their head without help.
- **Ensure** that the product is fully assembled before use.
- **DO NOT** let children play with this product.
- **Be aware of the risk** of open fire and other sources of strong heat such as electric bar fires, gas fires, etc. near the product.
- **To avoid strangulation, DO NOT** place items with a string around your child's neck, suspend strings from this product, or attach strings to toys.
- **Wind-up swing components** may be under high-spring tension. Attempts to open or disassemble the wind-up housing may result in serious injury.

Parts List:

Please make sure there are no missing parts. Please contact Joie Consumer Service if anything is missing.

- 1 Toys
- 2 Rocker Handle
- 3 Infant Insert
- 4 Waist Harness Straps
- 5 Seat Pad
- 6 Left Base Assembly
- 7 Carry Handle
- 8 Wind-Up Housing
- 9 Head Support
- 10 Shoulder Harness Straps
- 11 Crotch Buckle Cover
- 12 Right Base Assembly
- 13 Screw Set
- 14 Allen Wrench
- 15 Swing Arm
- 16 Rocker Base
- 17 Wind-Up Handle
- 18 Speed Adjustment Switch
- 19 Recline Adjustment Lever
- 20 Handle Adjustment Button (x2)
- 21 Rocker Release Button
- 22 Rocker
- 23 Rock-Stop Foot

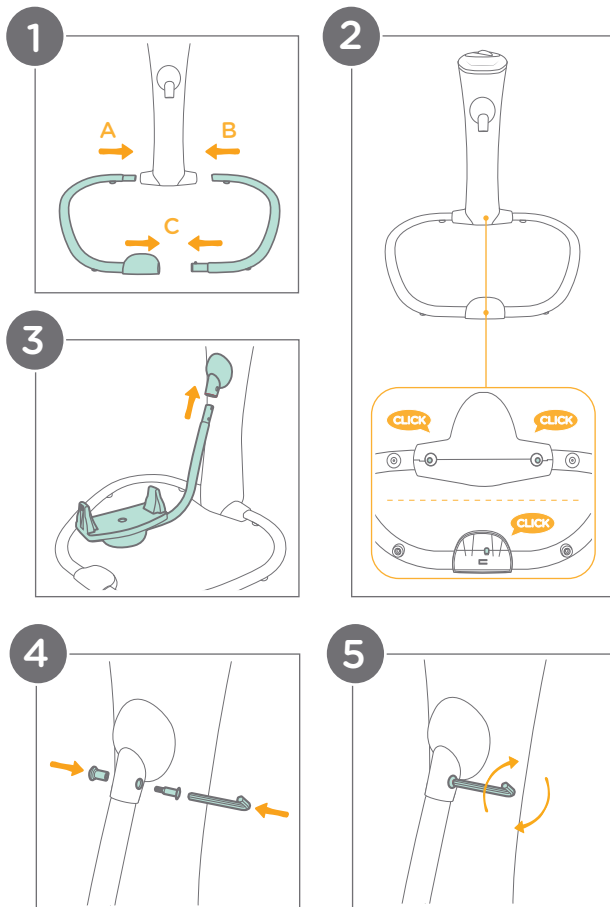
Parts List:



Assembling Swing:

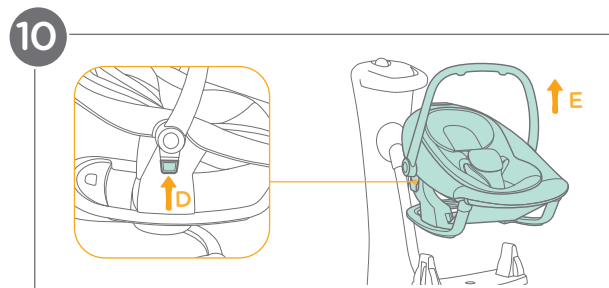
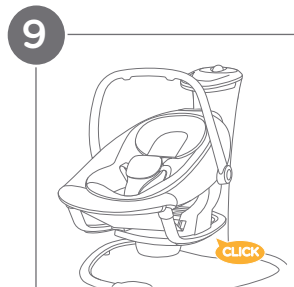
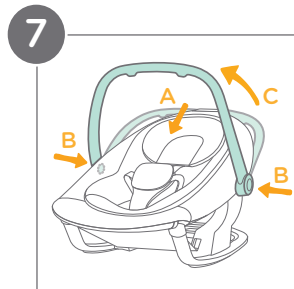
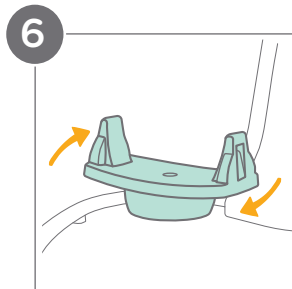
- 1 - Insert the left base assembly (A) into the left side of the wind-up housing. Insert the right base assembly (B) into the right side of the wind-up housing. This will also align and attach the two base assembly pieces to each other in the front (C).
- 2 - A “clicking” sound will confirm that each piece is properly locked in place.
- 3 - Insert the swing arm into the wind-up housing.
- 4 - Insert the two pieces of the screw set into each other through the opening in the top of the swing arm.
- 5 - Tighten the screw set with the included allen wrench.

(Assembling Swing continued on pg. 12)



Assembling Swing: (cont.)

- 6 - Turn the rocker base to be parallel with the front of the base assembly.
- 7 - Move the rocker handle from behind the seat to the front of the seat (A). Press the left and right handle adjustment buttons (B) at the same time and rotate the rocker handle to the upright position (C).
- 8 - Align the rocker with the rocker base. Place the seat directly down.
- 9 - A “clicking” sound will confirm that the rocker is properly locked in place. Pull up on the rocker handle to ensure that the rocker is securely attached.
- 10 - To remove the rocker, press the rocker release button (D) while pulling up on the rocker handle (E).



Using Buckle & Harness Straps:

1 - Releasing the Restraint Buckle:

Locate the button in the center of the restraint buckle and press it firmly to release the harness straps.

2 - Locking the Restraint Buckle:

Slide the shoulder harness buckle into the waist harness buckle (A). Insert the combined buckles into the center buckle (B). A “clicking” sound will confirm that the restraint buckle is properly locked in place (C).

3 - Adjusting the Shoulder Harness Height:

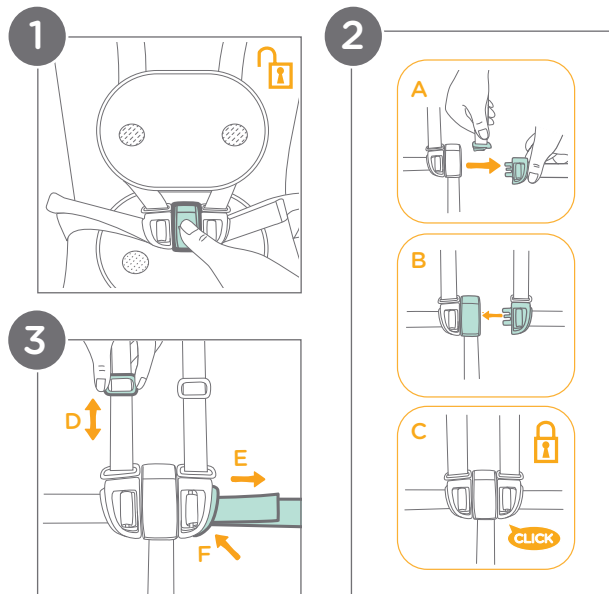
Use the slide adjuster (D) to adjust the length of the shoulder harness straps. Pull the waist harness strap (E) to tighten the waist harness. Press the button (F) on the waist belt buckle and pull to loosen the waist harness strap (E).

IMPORTANT: To avoid serious injury from falling or sliding out, **ALWAYS** secure your child with the harness.

Make sure your child is snugly secured. The space between the child and the shoulder harness straps should be about a 1/2 inch.

Note: An improperly restrained child may lean forward or shift in the seat, causing the swing to run poorly.

DO NOT cross the shoulder straps. This will cause pressure on the child's neck.

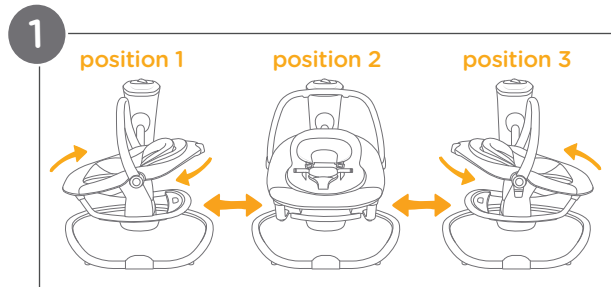


Rotating Seat:

The seat can be adjusted to 3 positions.

- 1 - The seat can be rotated 180 degrees. Turn the seat by grasping the rocker handle and rotating the seat left or right.

IMPORTANT: Ensure that the seat is locked into one of the 3 positions.



Using Wind-Up Handle:

1 - Lift the wind-up handle and rotate it clockwise to wind the swing. If the wind-up mechanism is completely unwound, approximately 35 turns will fully wind the swing.

2 - **IMPORTANT:** A snapping sound will indicate that the swing is fully wound. **DO NOT** attempt to wind the mechanism further.

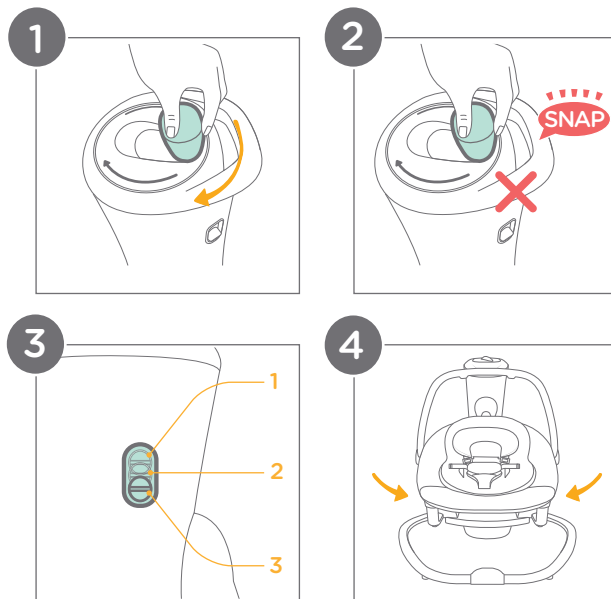
3 - The speed adjustment switch can be set to 3 levels. Setting 1 is high, setting 2 is medium, and setting 3 is low.

Starting & Stopping Swing:

4 - To start the swing, lightly push the seat left or right.

To stop the swing, lightly apply resistance in the opposite direction of the swing motion.

Swing will run approximately 30 minutes after being fully wound (run time will vary based on the weight of the child and the speed setting).



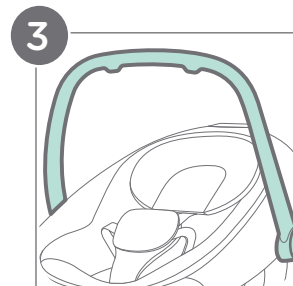
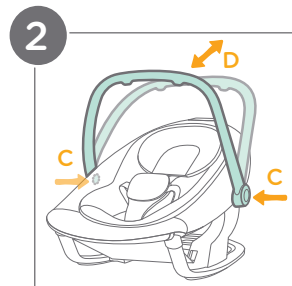
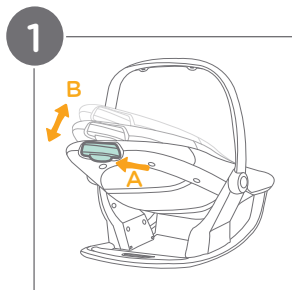
Adjusting Recline:

The recline can be adjusted to 3 positions.

- 1 - Squeeze the recline adjustment lever on the back of the seat (A) and raise or lower the seat back (B) to adjust it to the desired recline position.

IMPORTANT: Ensure that the seat is locked into one of the 3 recline positions.

ALWAYS keep the rocker seat fully reclined until the infant is at least 4 months old **AND** can hold up their head without help.



Adjusting Handle:

The handle can be adjusted to 2 positions.

- 2 - To adjust the handle, press the left and right handle adjustment buttons (C) at the same time and rotate the handle (D) to the desired position.

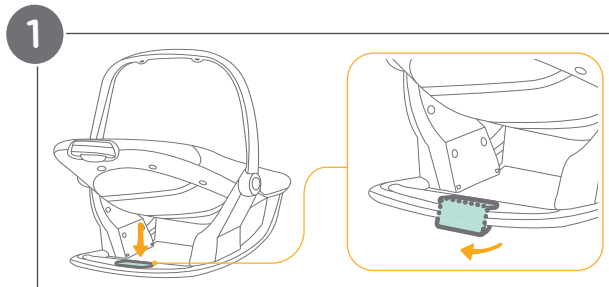
3 - WARNING! The handle must be in the fully upright position when lifting the rocker. **DO NOT** lift the rocker unless your child is properly harnessed.

Tip Rotate the handle back past the second position when placing the child in the seat.

Using Rock-Stop Foot:

- 1** - Locate the rock-stop foot on the back of the rocker. Rotate it fully down. This will disable rocking.

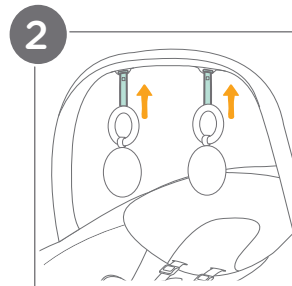
To enable rocking, rotate the rock-stop foot fully upward.



Using Toys:

- 2** - To attach the toys, thread the toy straps through the slots at the top of the rocker handle.

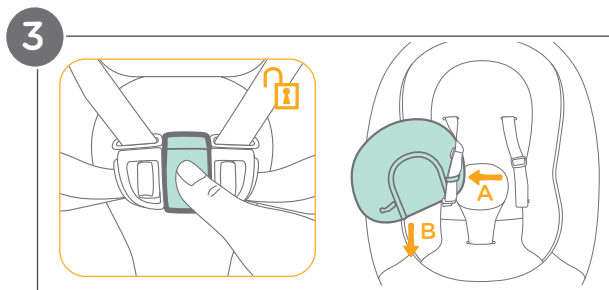
Toy shape or type may differ depending on the fashion.



Using Head Support:

- 3** - To remove the head support, release the restraint buckle and slide the shoulder harness buckles out of the waist belt buckles. Unthread the shoulder harness straps from the elastic on the back side of the head support (A). Slide the head support off of the straps by pulling it down (B).

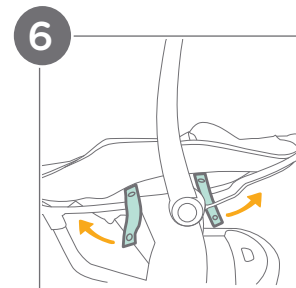
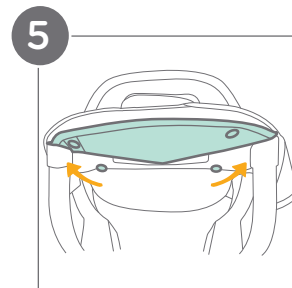
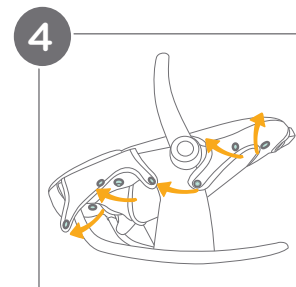
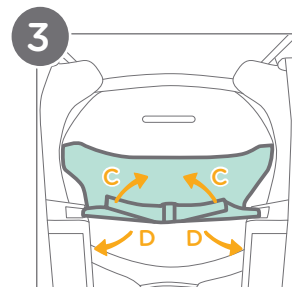
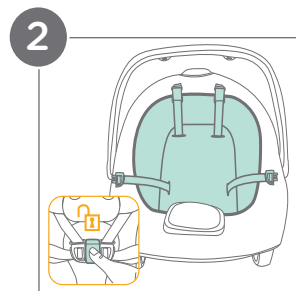
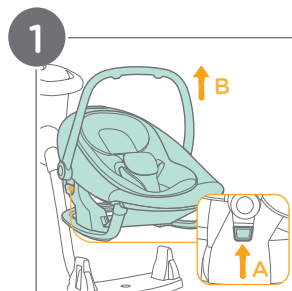
To reattach the head support, repeat the above steps in the reverse order.



Removing Softgoods:

- 1 - Remove the rocker by pressing the rocker release button (A) while pulling up on the rocker handle (B).
- 2 - Release the restraint buckle. To remove the infant insert, unthread the waist and shoulder harness straps from their corresponding openings.
- 3 - To remove the seat pad, first remove the fabric flap on the underside of the seat by unfastening the hook and loop fasteners (C) on both sides, unthreading them from the center clip (D), then unwrapping them from the slots.
- 4 - Disconnect the snaps on both sides of the seat pad.
- 5 - Disconnect the snaps on the front bottom of the seat pad.
- 6 - Disconnect the straps from around the tubing on the underside of the seat. Remove the seat pad from the seat frame.

To reattach the softgoods, repeat the above steps in the reverse order.



Care & Maintenance:

Cleaning:

To wash the seat pad and infant insert, refer to the care tags on the product. **DO NOT** tumble dry.

The product can be spot cleaned with a sponge and soapy water.

DO NOT use undiluted detergent, alcohol, or other solvent to wash the product. It may cause damage to the product.

DO NOT use bleach.

Maintenance:

Worn parts: Replace any worn or damaged parts. Use only Joie replacement parts.

Torn material or stitching: Repair or replace torn fabric or stitching. Use only Joie replacement fabrics.

Contact Joie Consumer Service at:

Email: info.us@joiebaby.com • Phone: 1-866-798-7866

Storage:

Before storing, run the swing until it stops to ensure that the spring is fully unwound.

If the product is not in use for a long period of time, store it where your child cannot access it.



Effortlessly happy.

Helping parents be their best
with worry-free baby gear.