



Instruction Manual

# base AR

infant car seat base

watch my



install videos



compatible with  
all Joie infant  
car seats



## IMPORTANT!

Read the instructions in this manual before use of the product.  
Keep this manual for future use.

---

## Contents:

---

- 3 Important
  - Welcome to the Joie Family!
  - If You Need Help
  - Register this Child Restraint
- 5 Child Requirements
- 6 Warnings
- 14 Best Practices
- 15 Vehicle Compatibility
- 16 Vehicle Belts
- 18 Choose Your Installation
- 22 Parts List
- 24 Adjusting Recline
- 26 **Base Install – Lower Anchor Attachments**
- 30 Removing and Storing Lower Anchor Attachments
- 32 **Base Install – Lap/Shoulder Belt**
- 36 **Base Install – Lap Belt ONLY**
- 40 Attaching and Removing Carrier from Base
- 42 Care and Maintenance

---

## Important:

---

### Welcome to the Joie Family!

Ensure your child's safety – **READ THIS MANUAL CAREFULLY!**

Although no child restraint can promise to protect in every situation, using it correctly reduces the chance of serious injury. Even if the child restraint seems easy, follow the step-by-step instructions in this book.

**Store this instruction manual in the compartment located on the underside of the base of the child restraint.**

### If You Need Help

If you have questions in the U.S.A about parts, use, or maintaining your child restraint, contact our Consumer Service Department for assistance. To ensure a speedy response, please have your child restraint's model number and date of manufacture ready. You can find the information on a sticker located on the underside of the child restraint.

### Joie Baby USA Consumer Service Contact Info.

**Address:** 70 Thousand Oaks Blvd., Morgantown, PA 19543

**Email:** [info.us@joiebaby.com](mailto:info.us@joiebaby.com)

**Phone:** 1-866-798-7866

---

## Important:

---

### Register this Child Restraint

Child restraints could be recalled for safety reasons. You must register this restraint to be reached in a recall. Send your name, address, e-mail address if available, and the restraint's model number and manufacturing date to **70 Thousand Oaks Blvd., Morgantown, PA 19543** or call **1-866-798-7866** or register online at:

[www.joiebaby.com/us/register-car-seat](http://www.joiebaby.com/us/register-car-seat)

For recall information, call the U.S. Government's Vehicle Safety Hotline at **1-888-327-4236 (TTY: 1-800-424-9153)** or go to <http://www.NHTSA.gov>.

For future reference, record the following information about your child restraint in case you move, lose your registration card, or need to reference it for any reason. You can find this information on the registration card or on the label located on the back of the child restraint:

**Model Name:**

---

**Model Number:**

---

**Date of Manufacture:**

---

**Date of Purchase:**

---

---

## Child Requirements:

---

**STOP** using this child restraint as soon as the child reaches the **max. weight OR the max. height** for their Joie infant car seat.

**NEVER** use this child restraint forward-facing.

According to accident statistics, children are safer when properly restrained in the rear seating positions than in the front seating positions. **Children should ride rear-facing as long as possible.**

### Preterm or Low Birth Weight Infants

To ensure the safety of your preterm or low birth weight infant (born before 37 weeks or weighing less than 5 lb. (2.3 kg)), Joie recommends following the AAP's guidelines and consulting your doctor or hospital staff before the child's first car trip.

A medical evaluation is crucial to check for breathing and heart rate concerns when traveling in a rear-facing child restraint.

For additional information or to have your child restraint inspected by a certified professional, you can visit the Safe Kids Worldwide website at [www.safekids.org](http://www.safekids.org)

## ⚠ WARNING!

**DEATH OR SERIOUS INJURY** can occur if you fail to follow the warnings, instructions, and labels on the child restraint.

- Read **ALL INSTRUCTIONS** before use of the child restraint.
- Read the vehicle owner's manual for information on child restraint installation.
- **KEEP INSTRUCTIONS FOR FUTURE USE.**
- Failure to follow these instructions and child restraint's labels can result in child striking the vehicle's interior during a sudden stop or crash.
- **DO NOT** allow anyone who has not read the instruction manual to install or use this child restraint.
- **DO NOT** place rear-facing child restraint on front seat with air bag. **DEATH OR SERIOUS INJURY CAN OCCUR.** The back seat is the safest place for children 12 and under.



## ⚠ WARNING!

**DEATH OR SERIOUS INJURY** can occur if you fail to follow the warnings, instructions, and labels on the child restraint.

- If an air bag inflates, it can hit the child and the child restraint with great force and cause serious injury or death to your child. Review your vehicle owner's manual for more information about air bags and child restraint use.
- **DO NOT** use the child restraint if it is damaged or broken or if parts are missing.
- **NEVER** use a child restraint that has been involved in a **MODERATE** or **SEVERE** crash.
- **STOP** using this child restraint as soon as the child reaches the max. weight **OR** the max. height for their Joie infant car seat.

---

## WARNING!

---

**DEATH OR SERIOUS INJURY** can occur if you fail to follow the warnings, instructions, and labels on the child restraint.

---

- **NEVER** secure this child restraint using an inflatable seat belt. Move to a vehicle seat that does not have an inflatable seat belt or install using lower anchor attachments.
- Your child's safety is your responsibility. **NEVER** leave child unattended.
- Before each use, **ALWAYS** check the child restraint to make sure it is tightly secured to the vehicle seat.
- According to accident statistics, children are safer when properly restrained in the rear seating positions than in the front seating positions.
- If your vehicle does not have a back seat, review your vehicle owner's manual.
- The vehicle seat belt system **MUST** hold the child restraint securely. Not all vehicle seat belts can be used with a child restraint.

---

## WARNING!

---

**DEATH OR SERIOUS INJURY** can occur if you fail to follow the warnings, instructions, and labels on the child restraint.

---

- Select a suitable location for the child restraint in your vehicle. Secure the child restraint with a vehicle seat belt or lower anchor attachment that is properly routed as shown in this manual.
- **NEVER** attach two lower anchor attachments to one vehicle lower anchor point unless specifically allowed by the vehicle manufacturer.
- A rear-facing child restraint must be properly leveled. An improperly reclined child restraint can result in breathing difficulties, injury, or ejection.
- **DO NOT** remove the lower anchor system from child restraint. If using the vehicle seat belt to secure the child restraint, the lower anchor attachments must be properly stored.
- **DO NOT** allow the child restraint to contact the vehicle interior (side of the car door or the seat in the front).

## ⚠ WARNING!

DEATH OR SERIOUS INJURY can occur if you fail to follow the warnings, instructions, and labels on the child restraint.

- **STRANGULATION HAZARD:** Children have **STRANGLED** in loose or partially buckled harness straps. Fully restrain the child even when the child restraint is used outside the vehicle.
- **SUFFOCATION HAZARD:** The child restraint can roll over on soft surfaces and suffocate the child. **NEVER** place the child restraint on beds, sofas, or other soft surfaces.
- **FALL HAZARD:** Child's activity can move the child restraint. **NEVER** place the child restraint on counter tops, tables, or any other elevated surface. **ALWAYS** stay within arm's reach whenever the child restraint is not on the floor/ground.
- **FALL HAZARD:** The child restraint can fall from a shopping cart. **DO NOT** use it on a shopping cart.



## ⚠ WARNING!

DEATH OR SERIOUS INJURY can occur if you fail to follow the warnings, instructions, and labels on the child restraint.

- Be sure the handle is locked into the carrying position before lifting the child restraint.
- **DO NOT** use the child restraint if it has frayed or cut harness straps or is damaged in any way. To find out if damaged parts are replaceable, call 1-866-798-7866.
- **NEVER** modify any part of the child restraint.
- **DO NOT** attach additional padding, toys, or other devices unless made by Joie and described in these instructions. Use **ONLY** approved accessories. Unapproved items can injure your child and may void the warranty.
- **NEVER** leave the child restraint unsecured in your vehicle, even when it is unoccupied. In a crash, it could become a projectile and injure other vehicle occupants.

---

## WARNING!

---

**DEATH OR SERIOUS INJURY** can occur if you fail to follow the warnings, instructions, and labels on the child restraint.

- **NEVER** use clothing or blankets that interfere with providing a properly tightened harness. An unsecured or improperly harnessed child can come out of the restraint during a crash.
- Place blankets over child **AFTER** harness has been properly tightened.
- **ONLY** use this base with Joie infant car seats.

This child restraint system conforms to all applicable Federal Motor Vehicle Safety Standards.

---

## WARNING!

---

**NEVER** use a child restraint that has been involved in a **MODERATE** or **SEVERE** crash.

Even if there is no visible damage, the child restraint's internal structure may be compromised and may not protect your child in a future crash.

**A child restraint is still usable after a minor incident in which all of the following apply:**

- 1) The vehicle was able to be driven away from the crash site.
- 2) The vehicle door nearest the child restraint was **NOT** damaged.
- 3) None of the passengers in the vehicle sustained any injuries in the crash.
- 4) If the vehicle has air bags, the air bags did not deploy during the crash; and
- 5) There is no visible damage to the child restraint.

**Contact Joie Consumer Service with any questions or concerns.**

## Best Practices:

### Expiration:

**DO NOT USE THIS CHILD RESTRAINT 7 YEARS AFTER ORIGINAL PURCHASE.**

Stop using it after that date and dispose of it. If the original purchase date is unknown, the manufacture date located on the base should be used.

### Hot Weather Warning:

Child restraints can become extremely hot in the sun or warm weather. **ALWAYS** check the seat temperature before placing your child inside to avoid burns.

### Clothing:

For proper harness fit and child safety, avoid bulky clothing like heavy jackets or snowsuits when using the child restraint. Ensure that the harness is snug but comfortable on your child.

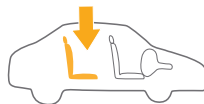
### Fit to Vehicle Seat:

Ensure that the base of the child restraint is at least 80% on the vehicle seat.



## Vehicle Compatibility:

**You MUST read and understand ALL child restraint related instructions and warnings in your vehicle owner's manual to correctly and safely use this child restraint in your vehicle.**



This child restraint can **ONLY** be installed on vehicle seats that face forward. **DO NOT** install in seats that face to the sides or rear of the vehicle.



**DO NOT** place rear-facing child seat on the front seat with the air bag. **DEATH OR SERIOUS INJURY CAN OCCUR.** The back seat is the safest place for children 12 and under.



**NEVER** attach two lower anchor attachments to one vehicle lower anchor point unless specifically allowed by the vehicle manufacturer.

**DO NOT** use both the vehicle seat belt and lower anchor attachments at the same time.

If your vehicle is equipped with front passenger side air bags, check your vehicle owner's manual for the child restraint installation instructions.



## Vehicle Belts:

These vehicle belts **CANNOT BE USED** with your child restraint. Install with lower anchor attachments instead.

### 1 - Motorized Belts (Automatic)

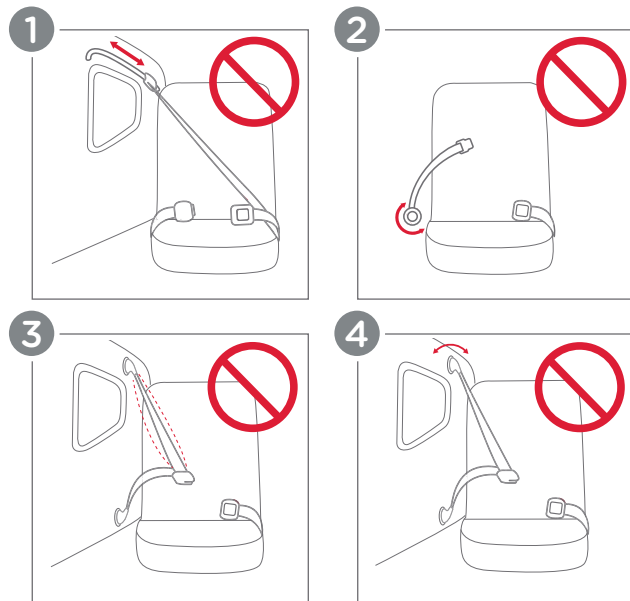
These should not be used unless the shoulder belt can be removed, the lap belt is locked, and use is allowed by the vehicle manufacturer.

### 2 - Non-Locking (ELR) Lap Belts

This belt only locks in a crash or sudden stop and should only be used with a belt shortening clip.

### 3 - Airbag/Inflatable Belts

### 4 - Door Mounted Belts



## Choose Your Installation:

This child restraint can be installed in your vehicle using either the vehicle seat belt **OR** the lower anchor attachments. Both are equally safe to use. **INSTALL USING ONLY ONE METHOD.**

## LATCH Install:

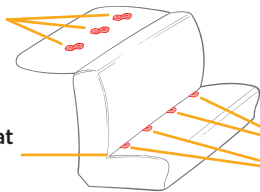
### LATCH (Lower Anchors and Tethers for Children):

The LATCH system or lower anchor attachment and top tether allow you to securely attach your safety seat in your car without using the vehicle seat belt. All 2003 and newer model year vehicles are required to have a LATCH system, although some manufacturers began including LATCH earlier. Some vehicle owner manuals use the term ISOFIX to identify the LATCH system.

#### Vehicle's Tether Anchor



#### Vehicle Seat Bight



Typical seat in a passenger vehicle. Other vehicle types may have different lower anchor locations.

#### LATCH: Lower Anchors



Review your vehicle owner's manual for exact location and use.

## Vehicle Belt Install:

### Vehicle Seat Belt:

Refer to your vehicle owner's manual to determine if the belts in your vehicle lock by switching the seat belt's retractor **OR** have a locking latch plate that locks the vehicle's seat belt.

### Vehicle Seat Belt Terms:

#### Retractor

A device that winds up the unused vehicle seat belt. It is often hidden inside the panels on the walls of the vehicle or in the vehicle seatback.

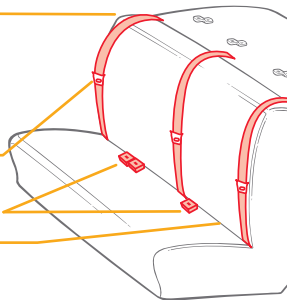
#### Latch Plate

The male end of the seat belt with the metal tongue.

#### Seat Bight

The crease where the vehicle seatback and seat bottom meet.

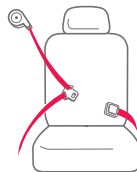
#### Buckle



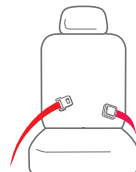
Review your vehicle owner's manual for exact location and use.

### Identify Your Seat Belt Type:

The vehicle seat belt types that can be used with this child restraint.



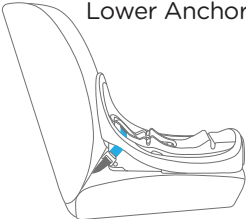
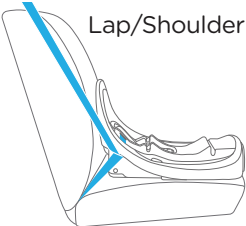
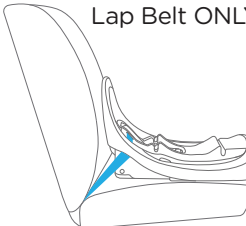
Lap/Shoulder Belt  
3 connection points



Lap Belt Only  
2 connection points

## Rear-Facing Installation Methods:

## Note

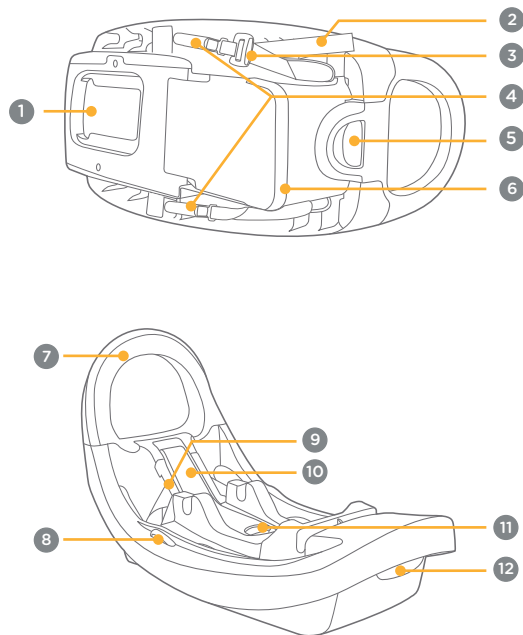
Installation Method	Suitable For
 <p>Lower Anchor Attachments</p> <p>Install pg. 26</p>	<p>The base is compatible with all Joie infant car seats.</p> <p>Please refer to the Joie infant car seat instruction manual for the installation of the infant car seat.</p>
 <p>Lap/Shoulder Belt</p> <p>Install pg. 32</p>	
 <p>Lap Belt ONLY</p> <p>Install pg. 36</p>	

## Parts List:

Please make sure there are no missing parts. Please contact Joie Customer Service if anything is missing.

- 1 Instruction Manual Storage
- 2 Lower Anchor Attachment Strap
- 3 Lower Anchor Attachment Strap Adjuster
- 4 Lower Anchor Attachments
- 5 Base Recline Lever
- 6 Base Recline Foot
- 7 Anti-Rebound Bar
- 8 Level Indicator
- 9 Lower Anchor Attachments Belt Path
- 10 Lock-Off Bar
- 11 Lock-Off Release Lever
- 12 Infant Car Seat Release Button

## Parts List:



## Adjusting Recline:



Ensure that the vehicle is on a flat and **LEVEL** surface.

**NEVER** adjust the recline when vehicle is on an incline.

**1** - The recline can be adjusted by pulling the recline adjustment lever (a) and pulling or pushing the base into the desired position (b). The base has 4 recline positions.

**2** - Place the base on your vehicle seat and adjust the recline. Ensure that the bubble level is entirely **UNDER** the lines for the correct recline.

### For 0-3 months:

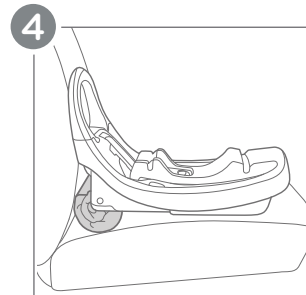
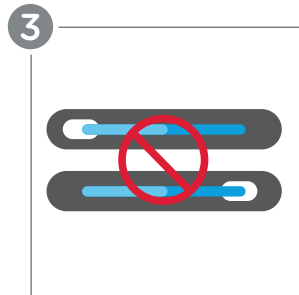
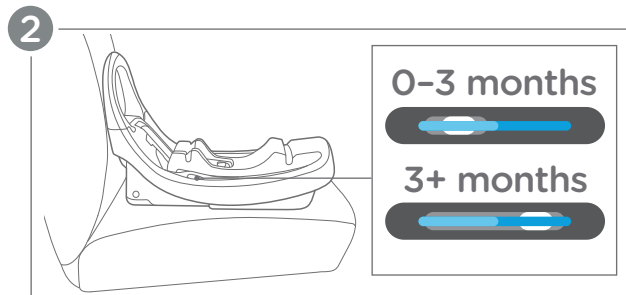
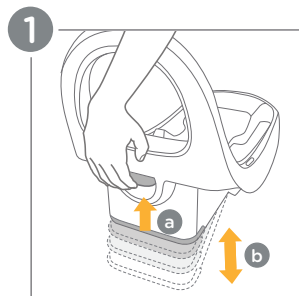
Ensure that the bubble is entirely under the light blue line.

### For 3+ months:

Ensure that the bubble is entirely under any portion of the line.

**3** - The bubble should not be outside the line for any recline position.

**4** - If needed, a rolled-up towel may be placed under the base at the vehicle seat bight to adjust the bubble to the correct position.



## Base Install - Lower Anchor Attachments:

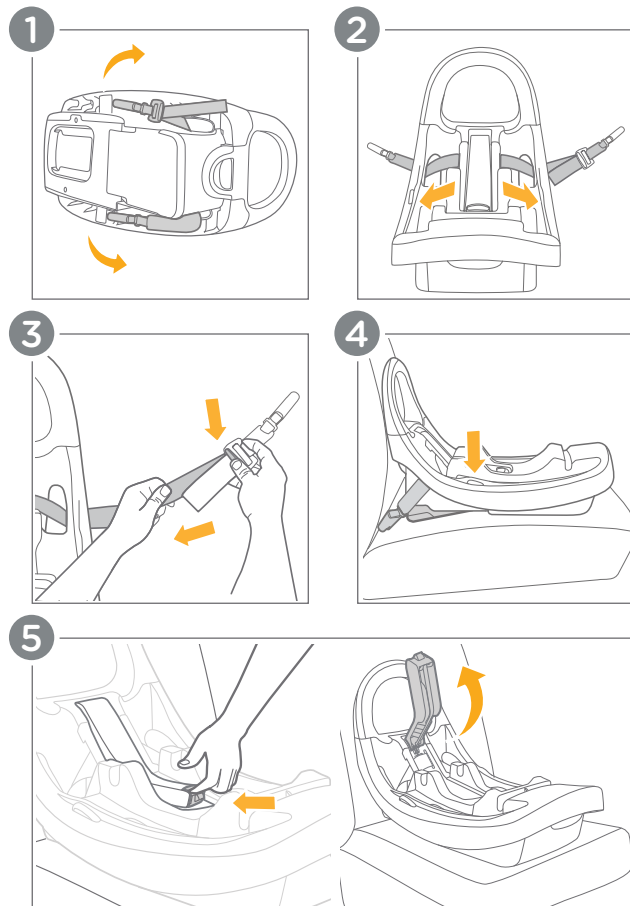
### INSTALL USING ONLY ONE METHOD.

**NEVER** install using **BOTH** vehicle belt and lower anchor attachments.  
**ONLY** install in a forward facing vehicle seat.

**BEFORE INSTALLING, refer to Adjusting Recline on pg. 24.**


- 1** - Press the lower anchor attachment release buttons to unhook the lower anchor attachments from the storage positions on the base.
- 2** - Ensure that the lower anchor attachment strap is threaded through the belt path, as shown.
- 3** - Press the button on the lower anchor attachment strap adjuster and pull to extend the lower anchor attachment strap to the full length.
- 4** - Place the base on the vehicle seat and check the recline level. Adjust the recline if needed.
- 5** - Lift up on the lock-off release lever and open the lock-off bar.

(Base Install - Lower Anchor Attachments continued on pg. 28)



## Base Install – Lower Anchor Attachments: (cont.)

**6** - Attach **BOTH** lower anchor attachments to the correct lower anchor points in your vehicle. Listen for a **CLICK**.

 The arrows on the sides of the lower anchor attachments should be pointing upwards. Refer to your vehicle's manual for specific lower anchor locations.

**7** - Press down firmly on the base while pulling on the free end of the lower anchor attachment strap to remove all the slack out of it.

**IMPORTANT:** DO NOT over tighten the lower anchor attachment strap or the lock-off bar will not close.

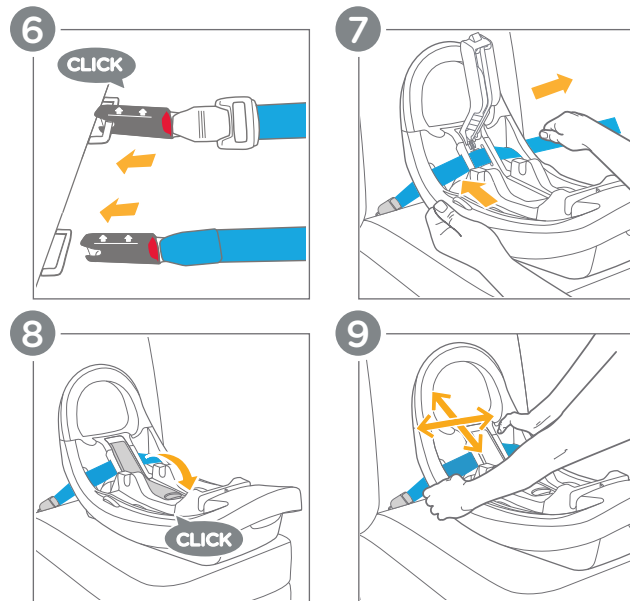
**8** - Close the lock-off bar. Listen for a **CLICK**. Keep your hands clear of the lock-off area while closing it.

**9** - Grab both sides of the base at the belt path and push and pull in all directions. The base should be snug and **NOT MOVE** in any direction **MORE THAN 1 in. (2.5 cm)** at the belt path.

After installing the base, continue on to Attaching Carrier to Base on pg. 40.

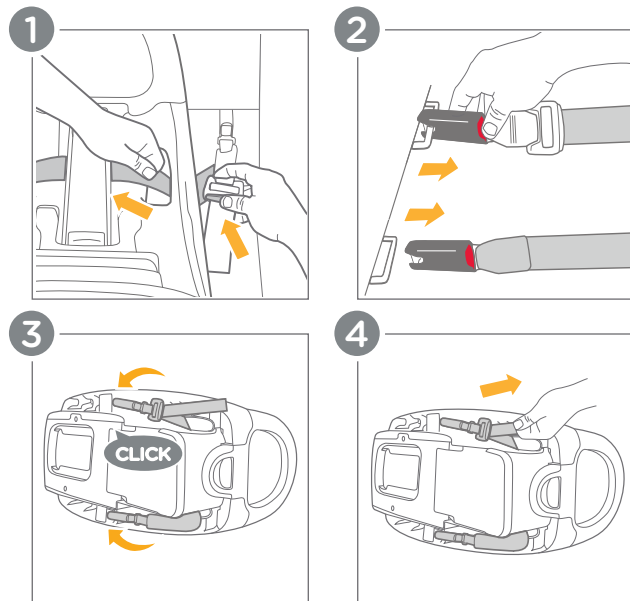
## Check Install!

- ☐ The recline is adjusted to the correct level.
- ☐ The lower anchor attachments are properly attached.
- ☐ The base should be snug and **NOT MOVE** in any direction more than 1 in. (2.5 cm) at the belt path.



## Removing and Storing Lower Anchor Attachments:

- 1 - Press the button on the lower anchor attachment strap adjuster and pull to extend the lower anchor attachment strap to the full length.
- 2 - Press the lower anchor attachment release buttons and pull to unhook the lower anchor attachments from the vehicle.
- 3 - Clip the lower anchor attachments to the storage positions on the base. Listen for a **CLICK**.
- 4 - Pull the lower anchor attachment strap to tighten the lower anchor attachments.





## Base Install – Lap/Shoulder Belt:

### INSTALL USING ONLY ONE METHOD.

**NEVER** install using **BOTH** vehicle belt and lower anchor attachments.

**ONLY** install in a forward facing vehicle seat.

**BEFORE INSTALLING**, refer to **Adjusting Recline** on pg. 24.

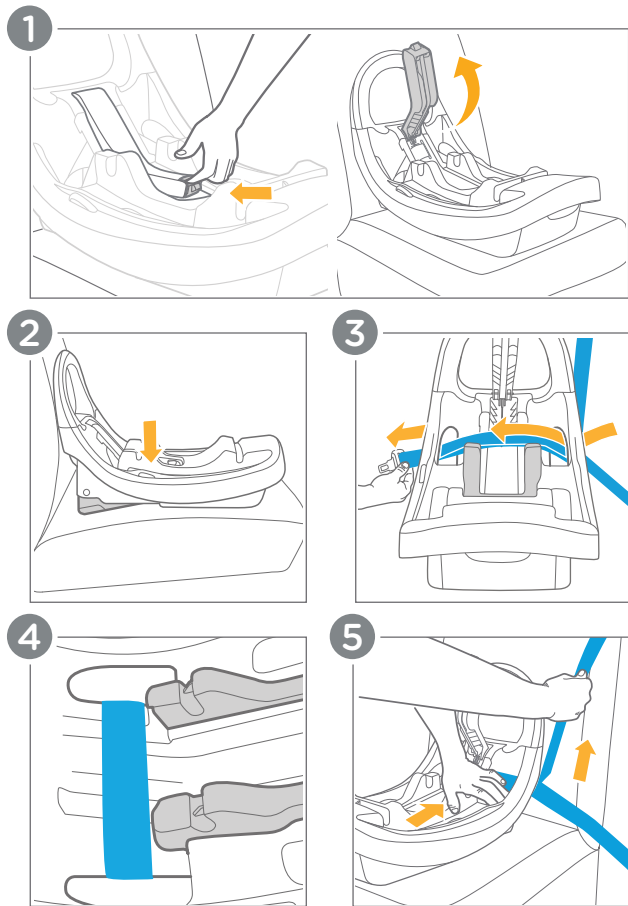
- 1 - Place the base on the vehicle seat. Lift up on the lock-off release lever and open the lock-off bar.
- 2 - Check the recline level.
- 3 - Thread the lap/shoulder belt through the belt path and buckle it.
- 4 - Ensure that the vehicle belt is above the notches on the base.

**IMPORTANT:** Ensure that the vehicle belt is not twisted and lies flat against the base.

- 5 - Press down firmly on the base while pulling on the vehicle shoulder belt to remove all the slack out of the vehicle lap belt.

**IMPORTANT:** **DO NOT** over tighten the vehicle belt or the lock-off bar will not close.

(Base Install – Lap/Shoulder Belt continued on pg. 34)



---

## Base Install – Lap/Shoulder Belt: (cont.)

---

**6** - Close the lock-off bar. Listen for a **CLICK**. Keep your hands clear of the lock-off area while closing it.

**7** - Grab both sides of the base at the belt path and push and pull in all directions. The base should be snug and **NOT MOVE** in any direction **MORE THAN 1 in. (2.5 cm)** at the belt path.

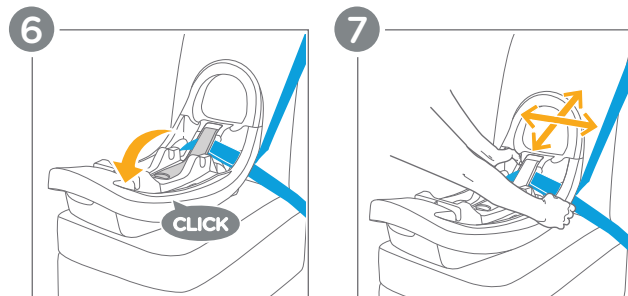
After installing the base, continue on to Attaching Carrier to Base on pg. 40.

---

## Check Install!

---

- ☐ The recline is adjusted to the correct level.
- ☐ The vehicle belt is buckled and is as tight as possible around the base. The vehicle belt is not loose or twisted.
- ☐ The base should be snug and **NOT MOVE** in any direction more than 1 in. (2.5 cm) at the belt path.



## Base Install - Lap Belt ONLY:

### INSTALL USING ONLY ONE METHOD.

**NEVER** install using **BOTH** vehicle belt and lower anchor attachments.  
**ONLY** install in a forward facing vehicle seat.

**BEFORE INSTALLING**, refer to **Adjusting Recline** on pg. 24.

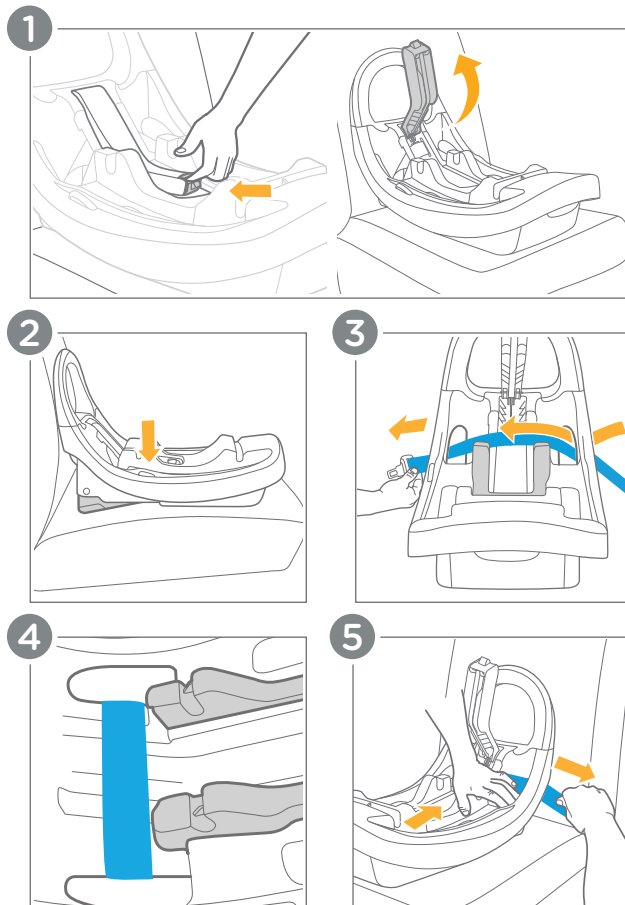
- 1 - Place the base on the vehicle seat. Lift up on the lock-off release lever and open the lock-off bar.
- 2 - Check the recline level.
- 3 - Thread the lap belt through the belt path and buckle it.
- 4 - Ensure that the vehicle belt is above the notches on the base.

**IMPORTANT:** Ensure that the vehicle belt is not twisted and lies flat against the base.

- 5 - Press down firmly on the base while pulling on the vehicle lap belt on the opposite side of the buckle to remove all the slack.

**IMPORTANT:** **DO NOT** over tighten the vehicle belt or the lock-off bar will not close.

(Base Install - Lap Belt ONLY continued on pg. 38)



---

## Base Install Lap Belt ONLY: (cont.)

---

**6** - Close the lock-off bar. Listen for a **CLICK**. Keep your hands clear of the lock-off area while closing it.

**7** - Grab both sides of the base at the belt path and push and pull in all directions. The base should be snug and **NOT MOVE** in any direction **MORE THAN 1 in. (2.5 cm)** at the belt path.

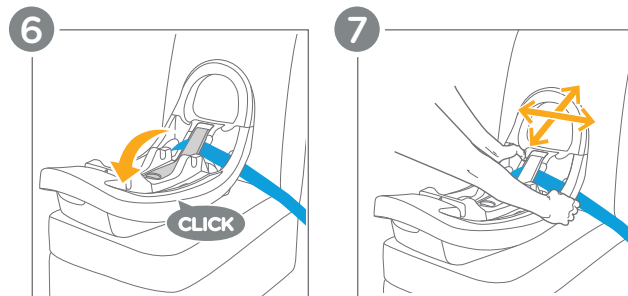
**After installing the base, continue on to Attaching Carrier to Base on pg. 40.**

---

## Check Install!

---

- ☐ The recline is adjusted to the correct level.
- ☐ The vehicle belt is buckled and is as tight as possible around the base. The vehicle belt is not loose or twisted.
- ☐ The base should be snug and **NOT MOVE** in any direction more than 1 in. (2.5 cm) at the belt path.



## Attaching Carrier to Base:

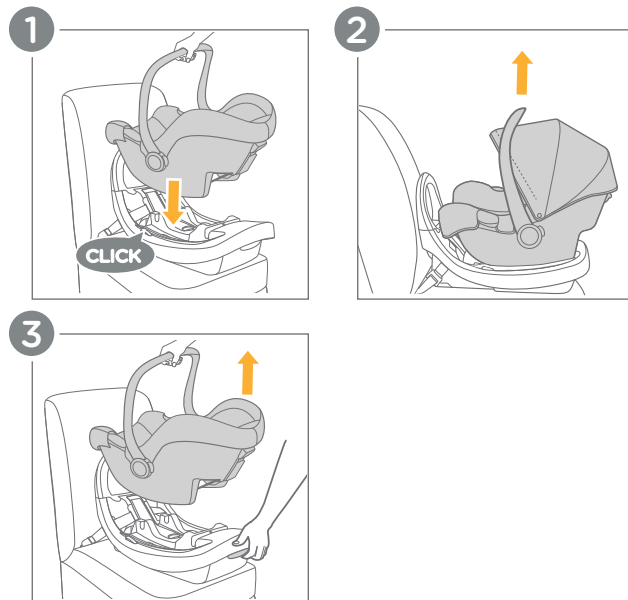
- 1 - Place the child restraint onto the base. Push down on the front of the child restraint. Listen for a **CLICK**.
- 2 - Check that the child restraint is secured by pulling up on the handle.

## Removing Carrier from Base:

- 3 - Squeeze the carrier release button and pull the child restraint up by the handle.

**IMPORTANT:** Refer to your Joie infant car seat manual for information on properly restraining your child in the carrier.

**IMPORTANT:** Carrier is not included. Carrier may differ from the illustrations. Any Joie infant car seat may be used with this base.



---

## Care and Maintenance:

---

### Cleaning:

Use **ONLY** mild detergent, water, and a soft cloth to clean the base. **NEVER** use bleach or any other harsh chemicals.

### Storage:

When not in use for a long period, remove the base from the vehicle. Store the base in a cool, dry place that your child does not have access to.

---

## Care and Maintenance:

---

### Normal Wear and Tear:

It is normal for the base to fade from sunlight and show wear and tear over time, even when used normally.

### Regular Checks:

Regularly check that everything functions properly. If any parts are torn, broken, or missing, stop using immediately and contact Joie Consumer Service for replacement parts.

### Joie Baby USA Consumer Service Contact Info.

**Address:** 70 Thousand Oaks Blvd., Morgantown, PA 19543

**Email:** [info.us@joiebaby.com](mailto:info.us@joiebaby.com)

**Phone:** 1-866-798-7866



**Effortlessly happy.**

Helping parents be their best  
with worry-free baby gear.