



Instruction Manual

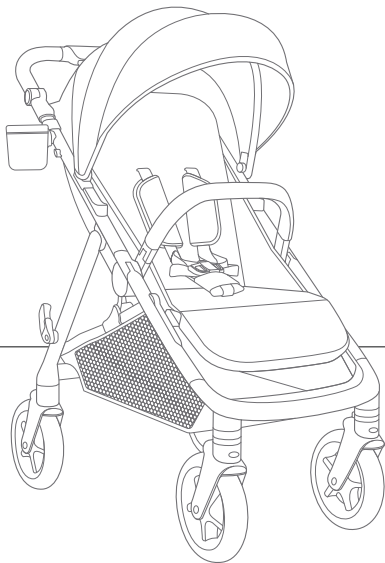
# caraway™ whirl

stroller with 360° wheels

Weight: up to 50 lb. (22.7 kg)

Height: up to 45 in. (114.3 cm)

---



## IMPORTANT!

Read all instructions before assembling and using the stroller.  
Keep instructions for future use.

---

## Contents:

---

- 3 Warranty Information
- 4 Warnings
- 8 Parts List
- 10 Opening Stroller
- 10 Attaching & Detaching Front Wheels
- 12 Attaching & Detaching Canopy
- 14 Attaching & Detaching Cup Holder
- 16 Attaching & Detaching Arm Bar
- 18 Securing Your Child
- 22 Adjusting Recline
- 22 Adjusting Calf Support
- 24 Using Front Swivel Locks
- 26 Using Brakes
- 28 Using Canopy
- 28 Removing Harness & Buckle Covers
- 30 Adjusting Handlebar
- 30 Using Whirl Wheels
- 32 Folding Stroller
- 34 Unfolding Stroller
- 36 Using Accessories
- 40 Care & Maintenance

### Child Usage Requirements

This stroller is suitable for use with children who meet the following requirements:

Weight: up to 50 lb. (22.7 kg)

Height: up to 45 in. (114.3 cm)

---

## Warranty Information:

---

### Product Registration

Please fill in the information below. The model number and the date of manufacture are located on a label on the stroller frame. Fill out the prepaid registration postcard attached to the product and mail it today. To register your product online, please visit: <https://joiebaby.com/us/register-gear>.

**Model Name:** \_\_\_\_\_

**Model Number:** \_\_\_\_\_

**Date of Manufacture:** \_\_\_\_\_

**Date of Purchase:** \_\_\_\_\_

register your  
product online



### Limited Warranty

We have purposely designed our high-quality products so that they can grow with both your child and your family. Because we stand by our product, our gear is covered by a custom limited warranty per product, starting from the day it was purchased. Please have the proof of purchase, model number, and date of manufacture available when you contact us. For warranty information, please visit: [www.joiebaby.com/us](http://www.joiebaby.com/us).

### Contact

#### Joie Baby USA Consumer Service Contact Info.

Address: 70 Thousand Oaks Blvd., Morgantown, PA 19543

Email: [info.us@joiebaby.com](mailto:info.us@joiebaby.com)

Phone: 1-866-798-7866

---

## WARNING

---

Failure to follow these warnings and instructions could result in serious injury or death.

- **NEVER** leave your child unattended.
- **Choking Hazard:** Keep small parts away from children. These components may pose a choking hazard.
- **Suffocation Risk:** Remove all plastic covers before using the stroller. Destroy these covers or keep them completely out of the reach of children.
- **Broken Stroller:** If the stroller becomes damaged or broken, stop using it immediately. A damaged stroller can be unsafe.
- **Modification Warning:** **DO NOT** modify the stroller in any way unless specified in the manual. Unauthorized changes can compromise safety.
- **Genuine Parts ONLY:** Use only genuine parts and accessories from Joie.
- **Overloading, incorrect folding, and using accessories other than those approved by Joie,** e.g., child seats, bag hooks, rain covers, buggy boards, baskets, etc., may damage or make the stroller unstable and unsafe.

---

## WARNING

---

Failure to follow these warnings and instructions could result in serious injury or death.

- **Weight & Height Limits:** This stroller is only suitable for children up to 50 lb. (22.7 kg) and 45 in. (114.3 cm) tall. Exceeding these limits can cause wear and tear, potentially leading to an unstable stroller.
- **Single Child Use:** This stroller is designed for one child only. **NEVER** transport more than one child at a time.
- **To prevent a hazardous, unstable condition, DO NOT** place more than 10 lb. (4.5 kg) in the storage basket and **NEVER** place purses, shopping bags, parcels, or other items on the handlebar or canopy.
- **DO NOT** use the storage basket as a child carrier.
- **Avoid serious injury from falling or sliding out.** **ALWAYS** use the harness. After fastening the buckles, adjust the belts to get a snug fit around your child.
- **Avoid Finger Entrapment:** Use care when folding and unfolding the stroller. Ensure that the stroller is fully erected and locked before allowing your child near the stroller.

---

## WARNING

---

Failure to follow these warnings and instructions could result in serious injury or death.

- **Strangulation Hazard: DO NOT** place items with a string around your child's neck, suspend strings from the stroller, or attach strings to toys.
- **DO NOT** let your child play with the stroller.
- **ALWAYS** keep your child in view while they are in the stroller.
- **NEVER** allow your child to stand on the stroller.
- **The brakes MUST be locked** when the stroller is stopped and when placing and removing your child.
- **Before locking the brakes**, ensure that whirl is deactivated and that the rear wheels are in the locked position.
- **Negotiate curbs and rough ground carefully.** Repeated impact could cause damage to the stroller.
- **The stroller is to be used ONLY at a walking speed** and is not intended for use while jogging, skating, etc.

---

## WARNING

---

Failure to follow these warnings and instructions could result in serious injury or death.

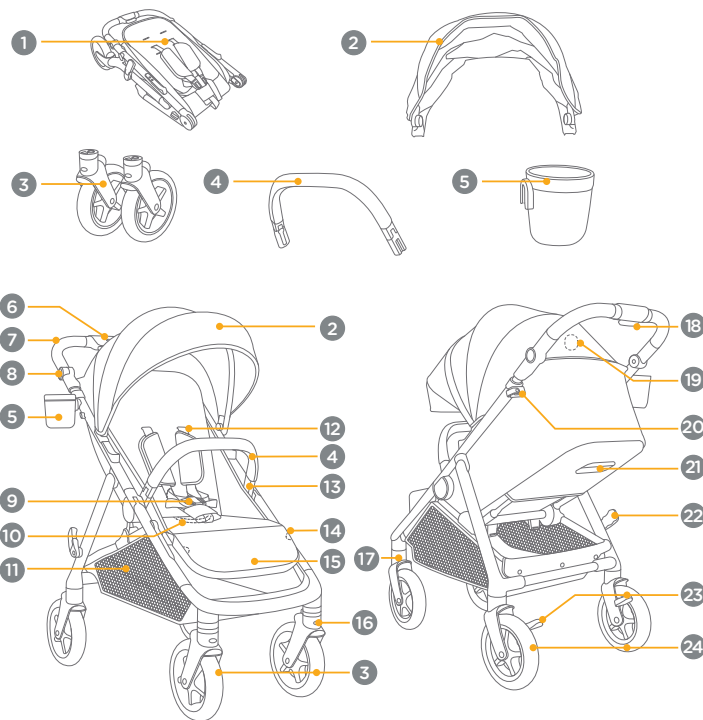
- **NEVER** use the stroller on stairs or escalators. You may suddenly lose control of the stroller or your child may fall out.
- **The stroller does not replace a crib or a bed.** Should your child need to sleep, they should be placed in a crib or sleeping area based on their requirements.
- **ALWAYS** allow the fabric to air dry away from direct heat.
- **DO NOT** leave the stroller near a strong heat source, i.e. a radiator or open fire.
- **DO NOT** store the stroller in a damp place.
- **To avoid burns, NEVER** put hot liquids in the cup holder.
- **To prevent a hazardous, unstable condition, DO NOT** place more than 1 lb. (0.5 kg) in the cup holder.
- **When using the stroller frame with a Joie infant car seat**, refer to the child usage requirements listed in the car seat instruction manual.

## Parts List:

Please make sure there are no missing parts. Please contact Joie Consumer Service if anything is missing.

- 1 Stroller Frame
- 2 Canopy
- 3 Front Wheels
- 4 Arm Bar
- 5 Cup Holder
- 6 Whirl Deactivation Button
- 7 Handlebar
- 8 Handlebar Adjustment Button (x2)
- 9 Restraint Buckle
- 10 Stroller Folding Strap
- 11 Storage Basket
- 12 Shoulder Harness
- 13 Arm Bar Release Button (x2)
- 14 Calf Support Adjustment Button (x2)
- 15 Calf Support
- 16 Wheel Release Button (x2)
- 17 Front Swivel Lock (x2)
- 18 Whirl Activation Button
- 19 Tracking Device Pocket
- 20 Infant Car Seat Lock
- 21 Recline Handle
- 22 Storage Latch
- 23 Brake Levers
- 24 Rear Wheels

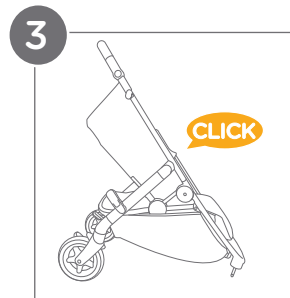
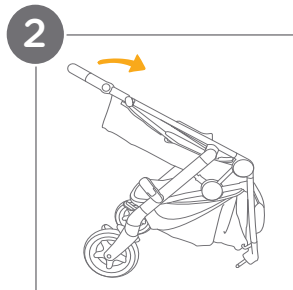
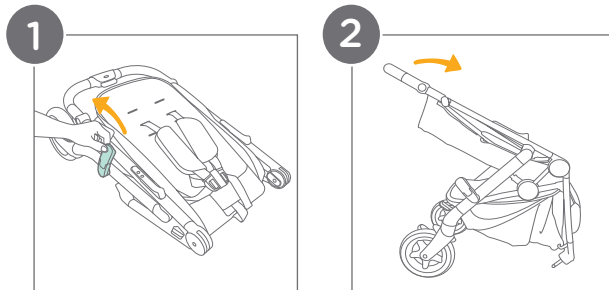
## Parts List:



## Opening Stroller:

- 1 - Separate the storage latch from the storage mount.
- 2 - Lift the handlebar upwards.
- 3 - A “clicking” sound will confirm that the stroller is completely open.

**IMPORTANT:** Check that the stroller is completely open by pushing down on the handlebar.



## Attaching & Detaching Front Wheels:

### 4 - Attaching the Front Wheels:

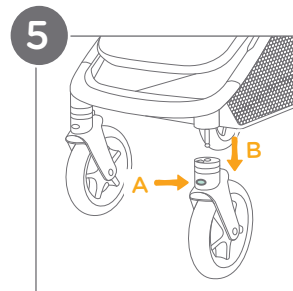
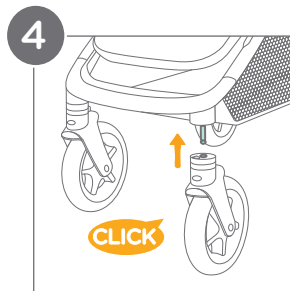
Insert the front wheels into the front legs.

A “clicking” sound will confirm that the wheels are properly locked in place.

**IMPORTANT:** Safety Check: **ALWAYS** pull on the wheels after attachment to ensure that they are securely fastened.

### 5 - Detaching the Front Wheels:

To remove the front wheels, press the wheel release button (A) on each wheel and pull the front wheel away from the front leg (B).

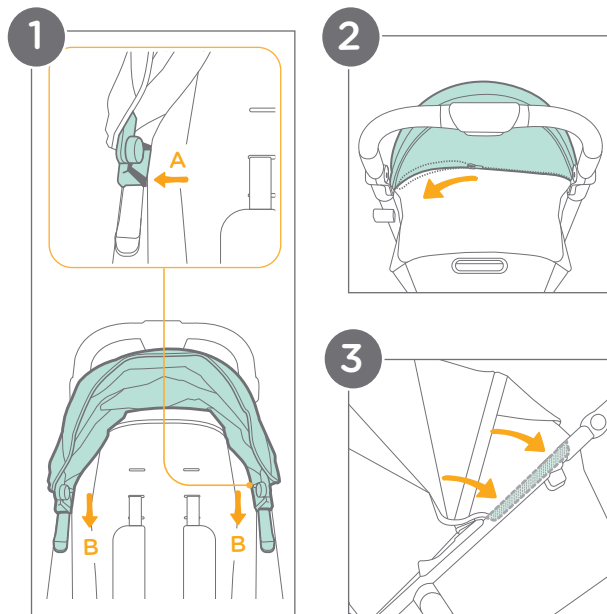


## Attaching & Detaching Canopy:

### Attaching the Canopy:

- 1 - Ensure that the elastics on the stroller seat are around the canopy clips (A). Slide the canopy clips into the canopy mounts on both sides of the stroller frame (B).
- 2 - Attach the canopy to the rear stroller frame by fully zipping the rear panel canopy zipper to the canopy frame zipper.
- 3 - Attach the hook and loop fasteners on the sides of the canopy to the sides of the seat.

To detach the canopy, repeat the above steps in reverse order.



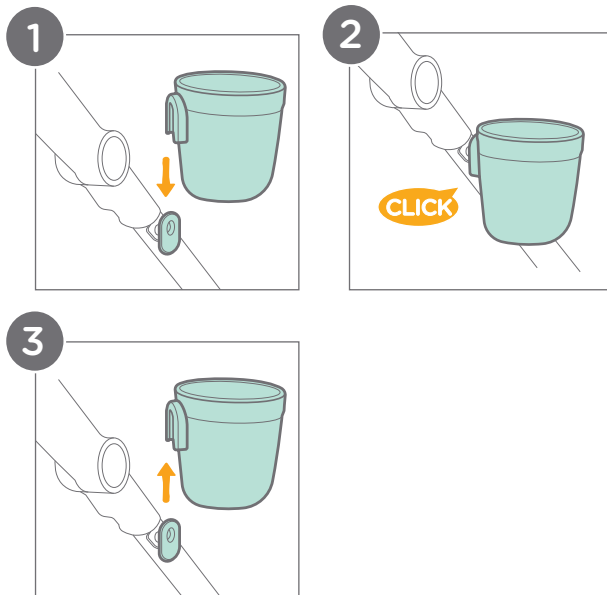
## Attaching & Detaching Cup Holder:

### Attaching the Cup Holder:

- 1 - To attach, align the cup holder with the designated mount on the stroller frame. Slide the clip on the cup holder downward until it snaps over the mount.
- 2 - A “clicking” sound will indicate that the cup holder is properly locked in place.

### Detaching the Cup Holder:

- 3 - To detach the cup holder, pull upward to slide it off of the mount.





## Attaching & Detaching Arm Bar:

- 1 - Before attaching the arm bar, ensure that the arm bar mounts are rotated and locked in position with the arrow pointing out.

### 2 - Attaching the Arm Bar:

Insert both ends of the arm bar into the arm bar mounts. A “clicking” sound will confirm that the arm bar is properly locked in place.

### 3 - Detaching the Arm Bar:

To remove the arm bar, press the arm bar release buttons (A) and pull the arm bar out (B).

### 4 - Rotating the Arm Bar:

Press and hold one arm bar release button (C) while lifting up to rotate the arm bar at the arm bar mount on the other side of the stroller (D).

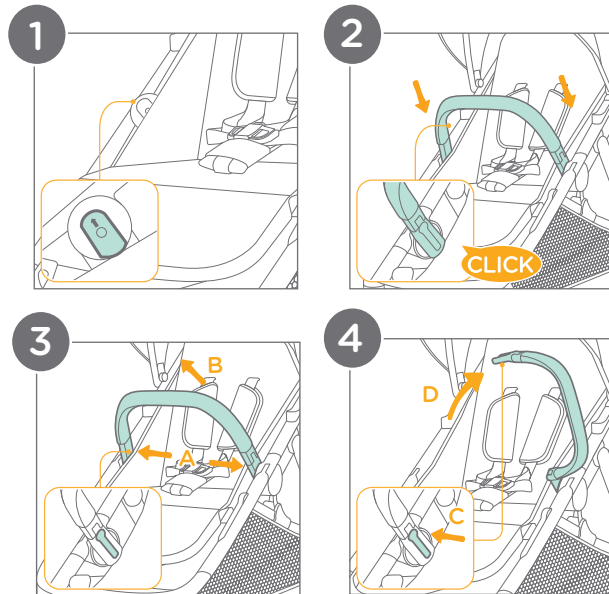
**IMPORTANT:** ALWAYS secure the child with the harness.

The arm bar is **NOT** a restraint device.

**DO NOT** lift the stroller by the arm bar. This can cause damage or injury.

**Use care** when attaching the arm bar onto the stroller with a child in the stroller.

**CAREGIVER MUST ALWAYS** help the child get into and out of the stroller.



## Securing Your Child:

### 1 - Releasing the Restraint Buckle:

Locate the button in the center of the restraint buckle and press it firmly to release the harness straps.

### 2 - Locking the Restraint Buckle:

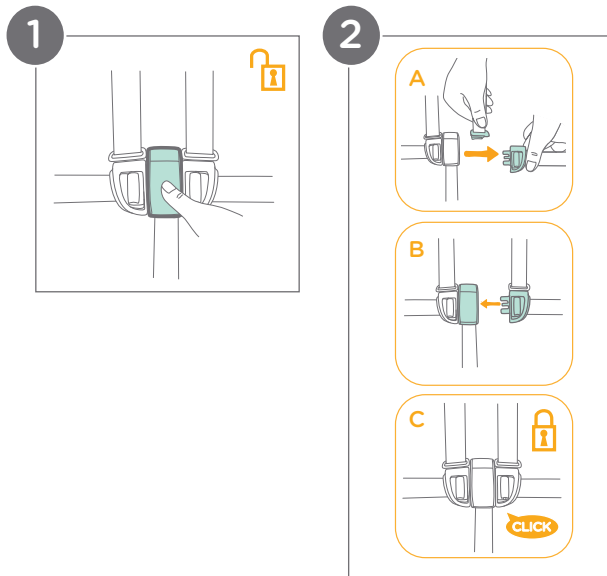
Slide the shoulder harness buckle into the waist belt buckle (A). Insert the combined buckles into the center buckle (B). A “clicking” sound will confirm that the restraint buckle is properly locked in place (C). Repeat on the second side of the center buckle.

**IMPORTANT: ALWAYS lock BOTH brakes:** This is crucial whenever the stroller is stopped, especially when placing or removing your child. A parked stroller with unlocked brakes can roll away, posing a serious fall hazard. Before locking the brakes, ensure that whirl is deactivated and that the rear wheels are in the locked position.

**Secure your child with the harness: NEVER** leave your child unbuckled in the stroller. A secure harness is essential to prevent them from falling or sliding out.

**Proper harness adjustment:** Ensure that the harness straps are snug but comfortable. The space between the child and the harness straps should be about a 1/2 inch.

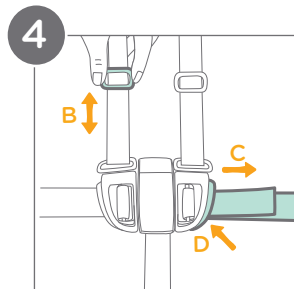
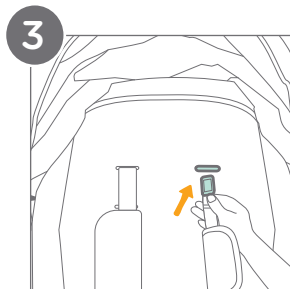
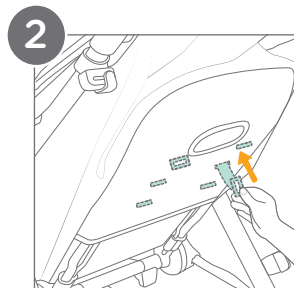
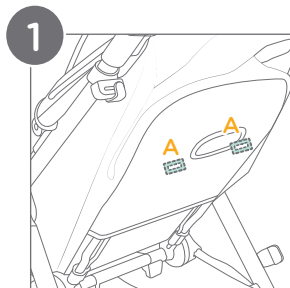
**Shoulder strap positioning: NEVER** cross the shoulder straps. **ALWAYS** keep them straight over your child's shoulders to avoid putting pressure on the child's neck.



## Shoulder Harness Height Adjustment:

- 1 - Locate the shoulder harness anchors (A) on the back of the seat, underneath the backrest fabric.
- 2 - Turn the harness anchor to be in line with the harness strap. Thread it through the shoulder harness slot from back to front.
- 3 - Re-thread the harness anchor through the correct slot from front to back. Ensure that both sides are adjusted to slots at the same height.
- 4 - Use the slide adjuster (B) to adjust the length of the shoulder harness straps. Pull the waist harness strap (C) to tighten the waist harness. Press the button (D) on the waist belt buckle and pull to loosen the waist harness strap (C).

**IMPORTANT:** DO NOT adjust the harness anchors with a child in the stroller.



## Adjusting Recline:

There are 3 recline angles for the backrest.

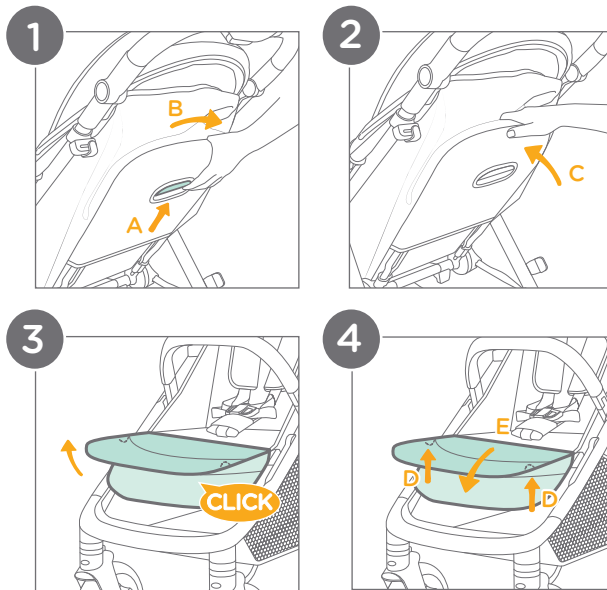
### 1 - Reclining the Backrest:

To recline the backrest, squeeze the recline handle (A) on the back of the seat, then pull down on the backrest (B).

### 2 - Raising the Backrest:

To raise the backrest, push up the backrest (C).

**IMPORTANT:** When making adjustments to the recline, make sure the child's head, arms, and legs are clear of moving seat parts and the stroller frame to prevent injury.



## Adjusting Calf Support:

There are 2 positions for the calf support.

### 3 - Raising the Calf Support:

To raise the calf support, lift the calf support upwards. A "clicking" sound will indicate that it is properly locked in place.

### 4 - Lowering the Calf Support:

Squeeze both calf support adjustment buttons on the underside of the calf support, beneath the fabric (D) and gently rotate the calf support downward (E).

---

## Using Front Swivel Locks:

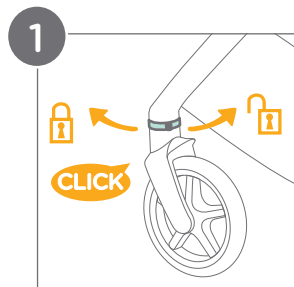
---

### 1 - Locking the Wheels:

Ensure that the front wheels are positioned straight ahead, not angled to the side or turned around.

The swivel locks are located on the backside of each wheel.

Rotate each swivel lock clockwise. A “clicking” sound will confirm that the wheels are properly locked in a straight position.



### Unlocking the Wheels:

Rotate each swivel lock counter-clockwise. The wheels will swivel freely again.

💡 It is recommended to use the swivel locks and to deactivate whirl on uneven surfaces.

## Using Brakes:

Before locking the brakes, ensure that whirl is deactivated and that the rear wheels are in the locked position.

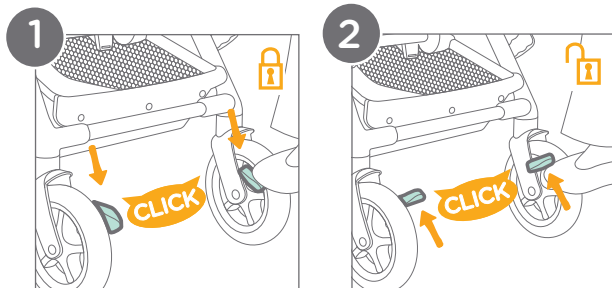
### 1 - Locking the Brakes:

Locate **BOTH** brake levers on the rear wheels. Step firmly on each lever to lock them. A “clicking” sound will confirm that the brakes are properly locked.

### 2 - Unlocking the Brakes:

Lift **BOTH** brake levers upwards to unlock them. A “clicking” sound will confirm that the brakes are properly unlocked.

**WARNING:** ALWAYS lock **BOTH** brake levers whenever the stroller is stopped. Gently push the stroller to ensure that the brakes are securely locked.




## Using Canopy:

### Opening and Closing the Canopy:

- 1 - To open, pull the canopy toward the front of the seat.  
To close, push the canopy back.
- 2 - For extended canopy coverage, unzip the canopy zipper and pull the canopy fully forward.

### Ventilation:

- 3 - For additional airflow, open the canopy window cover.

 A tracking device may be added to the pocket inside the canopy window cover.

## Removing Harness & Buckle Covers:

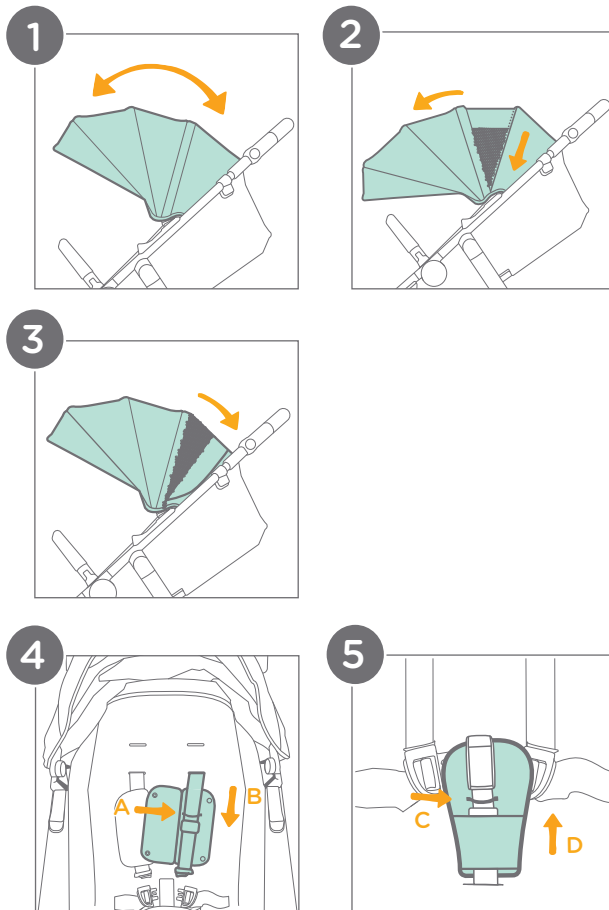
### 4 - Removing the Shoulder Harness Covers:

Unsnap the shoulder harness covers. Release the restraint buckle and slide the shoulder harness buckles out of the waist belt buckle. Unthread the shoulder harness straps from the elastic on the inside of the shoulder harness covers (A). Slide the harness covers off of the straps by pulling them down (B).

### 5 - Removing the Crotch Buckle Cover:

Unbuckle the harness straps. Unthread the center buckle from the elastic (C) on the inside of the crotch buckle cover. Lift the crotch buckle cover up to remove it (D).

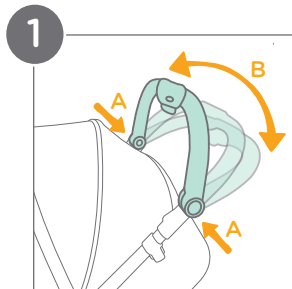
28 To reattach the covers, repeat the above steps in reverse order.



## Adjusting Handlebar

There are 3 positions for the handlebar.

- 1 - To adjust the handlebar, press the left and right handlebar adjustment buttons at the same time (A), and rotate the handlebar to the desired position (B).



## Using Whirl Wheels:

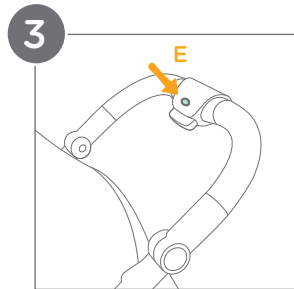
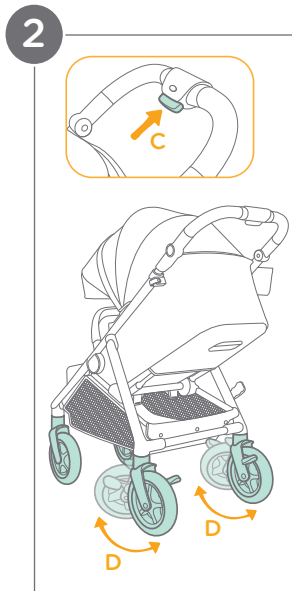
Use the whirl wheels for easier navigation through tight spaces.

- 2 - Press the whirl activation button (C) and the rear wheels of the stroller can be fully rotated (D).

**IMPORTANT:** Before using whirl, ensure that the front swivel locks and both brake levers are **NOT** locked. This will ensure that all wheels can freely swivel.

Ensure that the rear wheels are not in whirl mode before traveling on uneven or unlevel surfaces or mounting a curb.

- 3 - To stop using whirl, press the whirl deactivation button (E) and push the stroller forward for a short distance for the rear wheels to re-lock.





## Folding Stroller:

Before folding, ensure that the canopy is fully closed and the front wheels are rear facing with the front swivel locks disengaged.

- 1 - Ensure that the storage latch is pointing towards the back of the stroller. If it is not, rotate it counterclockwise.

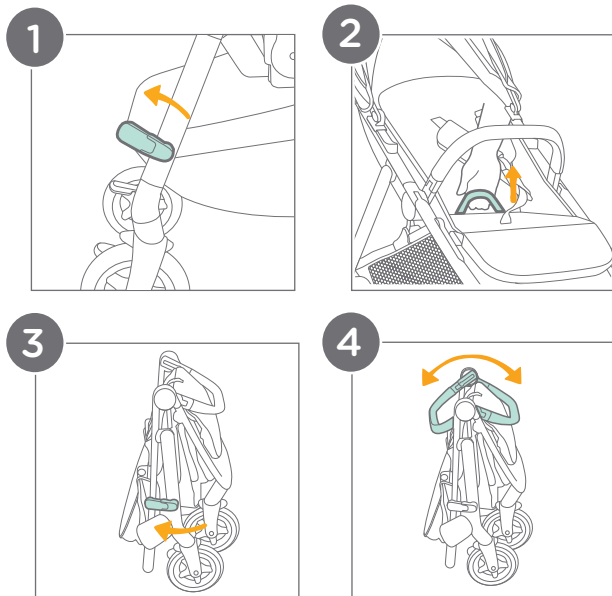


Locking the brakes makes folding easier.

- 2 - The stroller folding strap is located inside the stroller seat. Pull the stroller folding strap firmly upward and the frame will automatically fold.
- 3 - The storage latch will automatically hook onto the storage mount when fully folded.
- 4 - After folding, the arm bar can be pushed to either side of the stroller for a flatter fold.



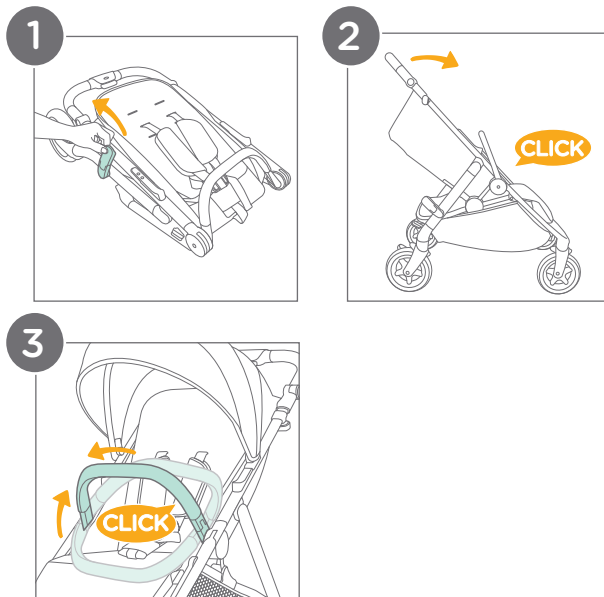
When the handlebar is in the middle position, the stroller can stand after folding.



## Unfolding Stroller:

- 1 - Separate the storage latch from the storage mount.
- 2 - Lift the handlebar upwards. A “clicking” sound will confirm that the stroller is completely open.
- 3 - Rotate the arm bar into the locked position by pushing the arm bar up or down. A “clicking” sound will confirm that the arm bar is properly locked.

**IMPORTANT:** Check that the stroller is completely open by pushing down on the handlebar.



## Using Accessories

**IMPORTANT:** ALWAYS adjust the backrest to the lowest position and close the canopy before attaching the infant car seat.

To recline the backrest, squeeze the recline handle (A) on the back of the seat, then pull down on the backrest (B).

**NEVER** fold the stroller with the car seat attached. ALWAYS remove the car seat first.

### 1 - Engaging the Infant Car Seat Lock:

Find the infant car seat lock located near the base of the stroller handle (C). Engage the infant car seat lock by sliding its rotating part towards the inside of the stroller.

### 2 - Attaching a Joie Infant Car Seat:

Insert the infant car seat onto the stroller frame (D), **OVER** the arm bar, and **UNDER** the engaged infant car seat lock (E).

A “clicking” sound will indicate that the car seat is properly locked in place.

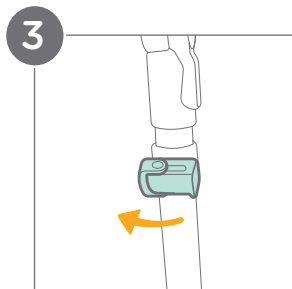
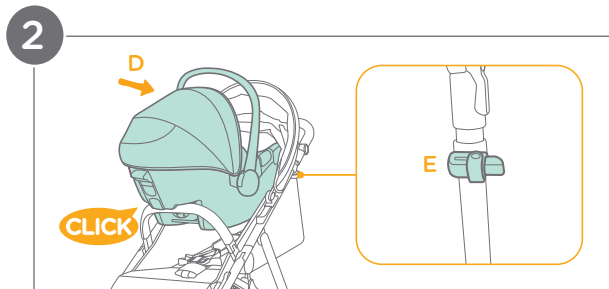
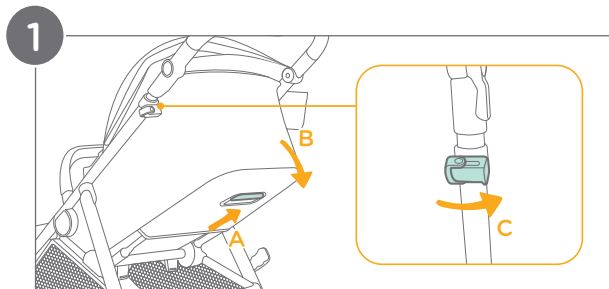
### 3 - Releasing the Infant Car Seat Lock:

Release the infant car seat lock by sliding its rotating part towards the outside of the stroller.

**ALWAYS** keep the infant car seat lock engaged when an infant car seat is attached to the stroller.



The infant car seat may be installed or removed with the infant car seat lock engaged.



#### 4 - Removing the Infant Car Seat:

Locate the release handle (A) on the car seat and squeeze it.

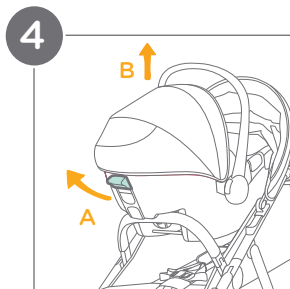
While squeezing the release handle, lift the infant car seat upwards (B) to detach it from the stroller.

**WARNING: Fall Hazard: ALWAYS** check that the infant car seat is securely attached to the stroller by pulling up on the car seat.

**ALWAYS** insert the infant car seat rear-facing. **NEVER** use it forward-facing.

**ALWAYS secure your child** with the infant car seat harness. Refer to your Joie infant car seat manual for information on properly restraining your child.

**ONLY** use Joie infant car seats with this stroller.



---

## Care & Maintenance:

---

### Cleaning:

**Seat pad:** Spot clean with a sponge and soapy water.

**Stroller frame:** Wipe clean with a solution of warm water and mild household soap. Avoid bleach and harsh detergents.

**Plastic parts:** Periodically wipe clean with a damp cloth.

**Metal parts:** After contact with water, thoroughly dry the metal parts to prevent rust.

### Maintenance:

**Regular inspection:** Check the stroller regularly for loose or missing parts. Discontinue use if parts are loose or missing.

**Worn parts:** Replace any worn or damaged parts. Use only Joie replacement parts.

**Torn material or stitching:** Repair or replace torn fabric or stitching. Use only Joie replacement fabrics.

**Contact Joie Consumer Service at:**

Email: [info.us@joiebaby.com](mailto:info.us@joiebaby.com) • Phone: 1-866-798-7866

### Storage:

**Extreme weather exposure:** Avoid excessive sun or heat exposure to prevent fading or warping of parts. Avoid storing outside or in cold conditions.

**Drying after use:** If the stroller gets wet, open the canopy and allow it to dry completely before storing.

### Wheel Maintenance:

**Squeaking wheels:** Apply a light coat of lubricating oil (e.g., silicone spray, anti-rust oil, or sewing machine oil) directly to the axle and wheel assembly to eliminate squeaking.

### Beach Use:

**After beach use:** Thoroughly clean the stroller to remove sand and salt from the mechanisms and wheels. This helps to prevent rust.

### Cup Holder:

Use mild detergent and warm water.

For a more thorough cleaning, remove the cup holder (see pg. 14).

The cup holder can be placed on the top rack of your dishwasher for convenient cleaning.





**Effortlessly happy.**

Helping parents be their best  
with worry-free baby gear.