



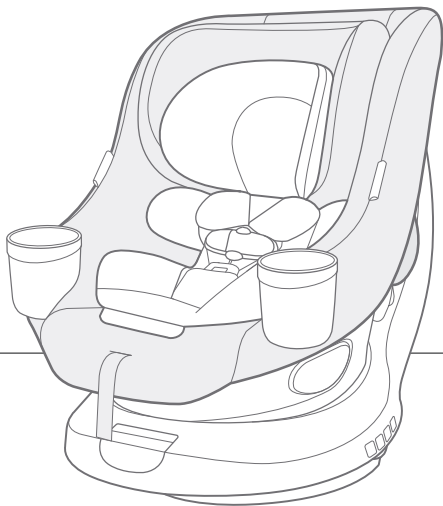
Instruction Manual

chili spin™ SI

2-in-1 360° rotating car seat

Height: less than 49 in. (125 cm)

Weight: 4 to 65 lb. (1.8 to 30 kg)



watch my



install videos

IMPORTANT!

Read all instructions before assembling and using the car seat.

Keep instructions for future use.

Contents:

3	Important
	Welcome to the Joie Family!
	If You Need Help
	Register Your Child Restraint
5	Child Requirements
6	Warnings
14	Best Practices
15	Vehicle Compatibility
16	Vehicle Belts
18	Choose Your Installation
	LATCH Install
	Vehicle Belt Install
20	Rear-Facing and Forward-Facing Requirements
22	Parts List
24	Headrest Height Adjustment
26	Crotch Buckle Adjustment
30	Adjusting Recline
32	Removing Infant Insert
34	Removing Side Impact Bolster
36	Rear-Facing (RF) - Install Using Lower Anchor Attachments
42	Rear-Facing (RF) - Install Using Lap/Shoulder Belt
46	Rear-Facing (RF) - Install Using Lap Belt ONLY
50	Rear-Facing (RF) - Securing Child
56	Forward-Facing (FF) - Install Using LATCH
62	Forward-Facing (FF) - Install Using Lap/Shoulder Belt and Tether
66	Forward-Facing (FF) - Install Using Lap Belt ONLY and Tether
70	Forward-Facing (FF) - Securing Child
76	Storing LATCH
78	Removing Softgoods
84	Cup Holders
86	Care and Maintenance

Color Key: ■ Rear-Facing & Belts ■ Forward-Facing

Important:

Welcome to the Joie Family!

Ensure your child's safety – **READ THIS MANUAL CAREFULLY!**

Although no child restraint can promise to protect in every situation, using it correctly reduces the chance of serious injury. Even if the child restraint seems easy, follow the step-by-step instructions in this book.

Store this instruction manual in the compartment located on the back of the child restraint.

If You Need Help

If you have questions in the U.S.A, about parts, use, or maintaining your child restraint, contact our Consumer Service Department for assistance. To ensure a speedy response, please have your child restraint's model number and date of manufacture ready. You can find the information on a sticker located on the underside of the child restraint.

Joie Baby USA Consumer Service Contact Info.

Address: 70 Thousand Oaks Blvd., Morgantown, PA 19543

Email: info.us@joiebaby.com

Phone: 1-866-798-7866

Important:

Register this Child Restraint

Child restraints could be recalled for safety reasons. You must register this restraint to be reached in a recall. Send your name, address, e-mail address if available, and the restraint's model number and manufacturing date to **70 Thousand Oaks Blvd., Morgantown, PA 19543** or call **1-866-798-7866** or register online at:

www.joiebaby.com/us/register-car-seat

For recall information, call the U.S. Government's Vehicle Safety Hotline at **1-888-327-4236 (TTY: 1-800-424-9153)** or go to <http://www.NHTSA.gov>.

For future reference, record the following information about your child restraint in case you move, lose your registration card, or need to reference it for any reason. You can find this information on the registration card or on the label located on the back of the child restraint:

Model Name:

Model Number:

Date of Manufacture:

Date of Purchase:

Child Requirements:

This child restraint is for a child that meets **BOTH** of the following requirements:

Weight: 4 to 65 lb. (1.8 to 30 kg)

Height: less than 49 in. (125 cm)

STOP using this child restraint as soon as the child reaches the max. weight OR the max. height.

According to accident statistics, children are safer when properly restrained in the rear seating positions than in the front seating positions. **Children should ride rear-facing as long as possible.**

Preterm or Low Birth Weight Infants

To ensure the safety of your preterm or low birth weight infant (born before 37 weeks or weighing less than 5 lb. (2.3 kg)), Joie recommends following the AAP's guidelines and consulting your doctor or hospital staff before the child's first car trip. A medical evaluation is crucial to check for breathing and heart rate concerns when traveling in a rear-facing child restraint.

For additional information or to have your child restraint inspected by a certified professional, you can visit the Safe Kids Worldwide website at www.safekids.org.

WARNING

DEATH OR SERIOUS INJURY can occur if you fail to follow the warnings, instructions and labels on the child restraint.

- Read **ALL INSTRUCTIONS** before use of the child restraint.
- Read the vehicle owner's manual for information on child restraint installation.
- **KEEP INSTRUCTIONS FOR FUTURE USE.**
- **DO NOT** allow anyone who has not read the instruction manual to install or use this child restraint.
- **DO NOT** use the child restraint if it is damaged or broken or if parts are missing.
- **NEVER** use a child restraint that has been involved in a **MODERATE** or **SEVERE** crash.
- **DO NOT** place a rear-facing child seat on the front seat with the air bag. **DEATH OR SERIOUS INJURY CAN OCCUR.** The back seat is the safest place for children 12 and under.



WARNING

DEATH OR SERIOUS INJURY can occur if you fail to follow the warnings, instructions and labels on the child restraint.

- If an air bag inflates, it can hit the child and the child restraint with great force and cause serious injury or death to your child. Review your vehicle owner's manual for more information about the air bags and child restraint use.
- Use **ONLY** with a child that weighs between 4 - 65 lb. (1.8 - 30 kg) and whose height is less than 49 in. (125 cm).
- Stop using this child restraint as soon as the child reaches the max. weight **OR** the max. height.
- **NEVER** secure this car restraint using an inflatable seat belt. Move to a vehicle seat that does not have an inflatable seat belt, or install using LATCH.
- A child's safety is your responsibility. **NEVER** leave your child unattended.
- Before each use, **ALWAYS** check the child restraint to make sure it is tightly secured to the vehicle seat.

WARNING

DEATH OR SERIOUS INJURY can occur if you fail to follow the warnings, instructions and labels on the child restraint.

- This restraint is certified for use only in passenger vehicles. This restraint is not certified for aircraft use, as aircraft belts will not accommodate proper installation of this restraint.
- Failure to follow these instructions and the child restraint's labels can result in the child striking the vehicle's interior during a sudden stop or crash.
- According to accident statistics, children are safer when properly restrained in the rear seating positions than in the front seating positions.
- If your vehicle does not have a back seat, review your vehicle owner's manual.
- Select a suitable location for the child restraint in your vehicle. Secure the child restraint with a vehicle seat belt or LATCH that is properly routed as shown in this manual.



WARNING

DEATH OR SERIOUS INJURY can occur if you fail to follow the warnings, instructions and labels on the child restraint.

- The vehicle seat belt system **MUST** hold the child restraint securely. Not all vehicle seat belts can be used with a child restraint.
- The rear-facing child restraint must be properly leveled. An improperly reclined child restraint can result in breathing difficulties, injury, or ejection.
- **DO NOT** remove the LATCH system from the child restraint. If using the vehicle seat belt to secure the child restraint, the lower anchor attachments must be properly stored.
- **DO NOT** allow the child restraint to contact the vehicle interior (the side of the car door or the seat in the front).

WARNING

DEATH OR SERIOUS INJURY can occur if you fail to follow the warnings, instructions and labels on the child restraint.

- **DO NOT** attach additional padding, toys, or other devices unless made by Joie and described in these instructions. Use only approved accessories. Unapproved items can injure your child and may void the warranty.
- **NEVER** modify any part of the child restraint.
- **DO NOT** use the tether when installing rear-facing.
- **DO NOT** use the child restraint if it has frayed or cut harness straps, or is damaged in any way.

To find out if damaged parts are replaceable, call 1-866-798-7866.

WARNING

DEATH OR SERIOUS INJURY can occur if you fail to follow the warnings, instructions and labels on the child restraint.

- **NEVER** attach two lower anchor attachments to one vehicle lower anchor point unless specifically allowed by the vehicle manufacturer.
- **DO NOT** use both the vehicle seat belt and LATCH at the same time.
- **DO NOT INSTALL** using the lower anchors (LATCH) for a child weighing more than 35 lb. (16 kg)
- **ALWAYS** make sure the turn lock indicator is fully green while the vehicle is in motion, even when the child is not in the seat.
- **NEVER** rotate the child restraint while the vehicle is in motion.
- **NEVER** leave the child restraint unsecured in your vehicle even when it is unoccupied. In a crash, it could become a projectile and injure other vehicle occupants.
- When installing forward-facing with lap belt only, **ALWAYS** recline the seat to POSITION 4.

WARNING

DEATH OR SERIOUS INJURY can occur if you fail to follow the warnings, instructions and labels on the child restraint.

- **NEVER** use clothing or blankets that interfere with providing a properly tightened harness. An unsecured or improperly harnessed child can come out of the restraint during a crash.
- Place blankets over child **AFTER** the harness has been properly tightened.
- **DO NOT** use this car seat for children that have implanted electronic medical devices. The magnetic locking mechanism on the chest clip can potentially disrupt the proper function of implanted electronic devices.

This child restraint system conforms to all applicable Federal motor vehicle safety standards.

WARNING

NEVER use a child restraint that has been involved in a **MODERATE** or **SEVERE** crash.

Even if there is no visible damage, the child restraint's internal structure may be compromised, and may not protect your child in a future crash.

The child restraint is still usable after a minor incident which includes all of the following situations:

- 1) The vehicle was able to be driven away from the crash site.
- 2) The vehicle door nearest the child restraint was **NOT** damaged.
- 3) None of the passengers in the vehicle sustained any injuries in the crash.
- 4) If the vehicle has air bags, the air bags did not deploy during the crash; and
- 5) There is no visible damage to the child restraint.

Contact Joie with any questions or concerns.

Best Practices:

Expiration:

DO NOT USE THIS CHILD RESTRAINT 10 YEARS AFTER ORIGINAL PURCHASE.

Stop using it after that date and dispose of it. If the original purchase date is unknown, the manufacture date located on the child restraint should be used.

Hot Weather Warning:

Child restraints can become extremely hot in the sun or warm weather. **ALWAYS** check the seat temperature before placing your child inside to avoid burns.

Clothing:

For proper harness fit and child safety, avoid bulky clothing like heavy jackets or snowsuits when using the child restraint. Ensure the harness is snug but comfortable on your child.

Fit to Vehicle Seat:

Ensure that the base of the child restraint is at least 80% on the vehicle seat.



Vehicle Compatibility:

You MUST read and understand ALL child restraint related instructions and warnings in your vehicle owner's manual to correctly and safely use this child restraint in your vehicle.



This child restraint can **ONLY** be installed on vehicle seats that face forward. **DO NOT** install in seats that face to the sides or rear of the vehicle.



DO NOT place rear-facing child seat on the front seat with the air bag. **DEATH OR SERIOUS INJURY CAN OCCUR.** The back seat is the safest place for children 12 and under.



NEVER attach two lower anchor attachments to one vehicle lower anchor point unless specifically allowed by the vehicle manufacturer.

DO NOT use both the vehicle seat belt and lower anchor attachment at the same time.

If your vehicle is equipped with front passenger side air bags, check your vehicle owner's manual for the child restraint installation instructions.

Vehicle Belts:

These vehicle belts **CANNOT BE USED** with your child restraint. Install with LATCH instead.

1 - Motorized Belts (Automatic)

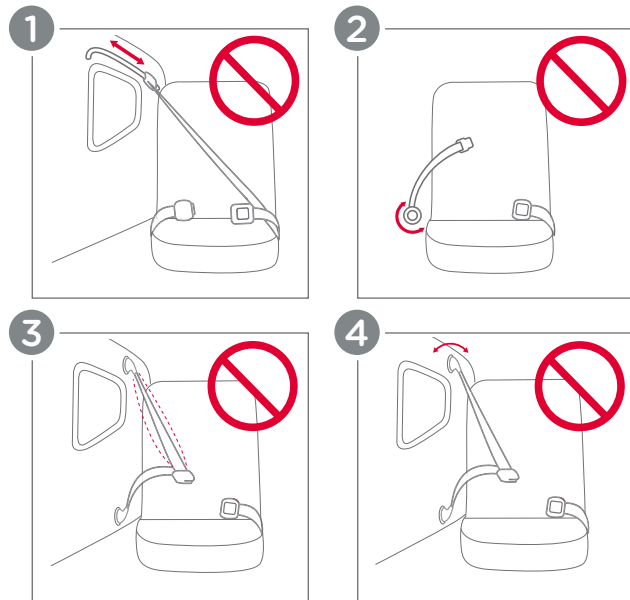
These should not be used unless the shoulder belt can be removed, the lap belt is locked, and use is allowed by the vehicle manufacturer.

2 - Non-Locking (ELR) Lap Belts

This belt only locks in a crash or sudden stop and should only be used with a belt shortening clip.

3 - Airbag/Inflatable Belts

4 - Door Mounted Belts



Choose Your Installation:

This child restraint can be installed in your vehicle using either the vehicle seat belt **OR** the lower anchor attachment (LATCH). Both are equally safe to use. **INSTALL USING ONLY ONE METHOD.**

LATCH Install:

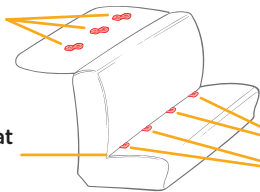
LATCH (Lower Anchors and Tethers for Children):

The LATCH system or lower anchors and top tether allow you to securely attach your safety seat in your car without using the vehicle seat belt. All 2003 and newer model year vehicles are required to have a LATCH system, although some manufacturers began including LATCH earlier. Some vehicle owner manuals use the term ISOFIX to identify the LATCH system.

Vehicle's Tether Anchor



Vehicle Seat Belt



Typical seat in a passenger vehicle. Other vehicle types may have different lower anchor locations.

LATCH: Lower Anchors



Review your vehicle owner's manual for exact location and use.

Vehicle Belt Install:

Vehicle Seat Belt:

Refer to your vehicle owner's manual to determine if the belts in your vehicle lock by switching the seat belt's retractor **OR** have a locking latch plate that locks the vehicle's seat belt.

Vehicle Seat Belt Terms:

Retractor

A device that winds up the unused vehicle seat belt. It is often hidden inside the panels on the walls of the vehicle or in the vehicle seatback.

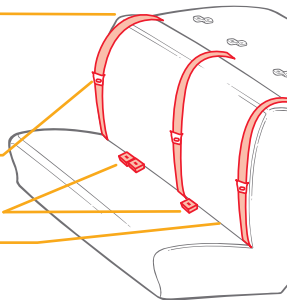
Latch Plate

The male end of the seat belt with the metal tongue.

Seat Bight

The crease where the vehicle seatback and seat bottom meet.

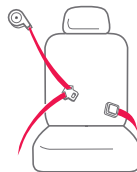
Buckle



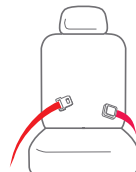
Review your vehicle owner's manual for exact location and use.

Identify Your Seat Belt Type:

The vehicle seat belt types that can be used with this child restraint.

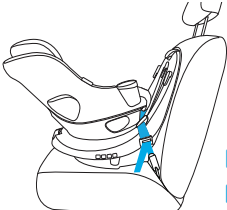
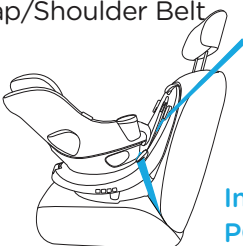
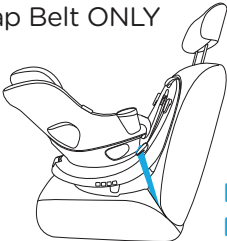


Lap/Shoulder Belt
3 connection points

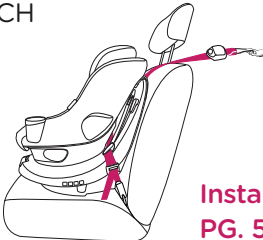
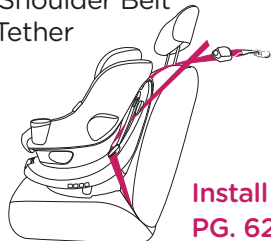
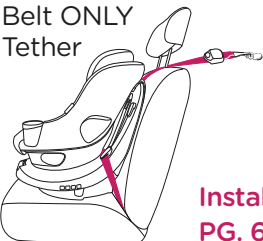


Lap Belt Only
2 connection points

Rear-Facing Requirements:

Installation Method	Suitable For
<p>Lower Anchor Attachments</p>  <p>Install PG. 36</p>	<p>Child height less than 43 in. (110 cm)</p> <p>Child weight 4 - 40 lb. (1.8 - 18 kg)</p> <p>According to accident statistics, children are safer when properly restrained in the rear seating positions than in the front seating positions.</p> <p>Children should ride rear-facing as long as possible.</p> <p>WARNING! DO NOT use the tether when installing rear-facing.</p> <p>WARNING! NEVER use lower anchors for children weighing more than 35 lb. (16 kg).</p>
<p>Lap/Shoulder Belt</p>  <p>Install PG. 42</p>	
<p>Lap Belt ONLY</p>  <p>Install PG. 46</p>	

Forward-Facing Requirements:

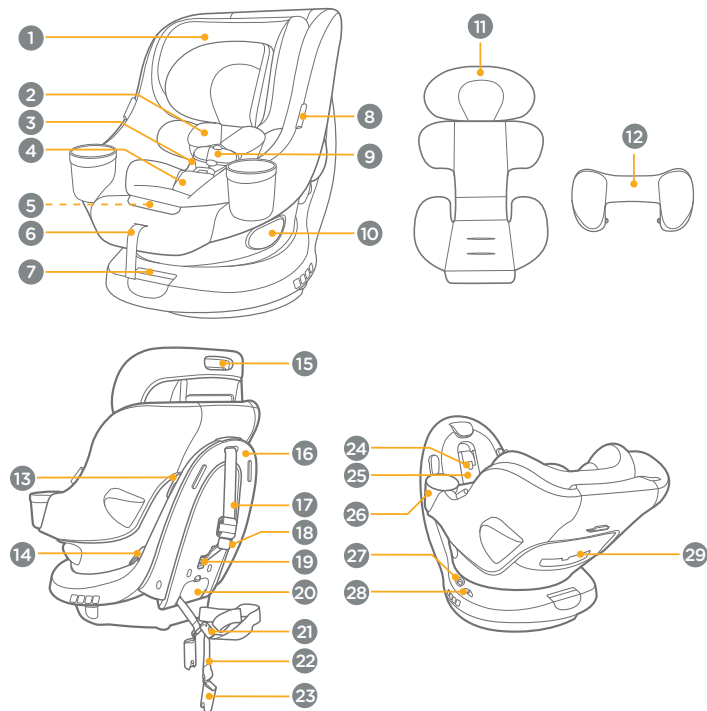
Installation Method	Suitable For
<p>LATCH</p>  <p>Install PG. 56</p>	<p>Child height less than 49 in. (125 cm)</p> <p>Child weight 30 - 65 lb. (13.6 - 30 kg)</p> <p>Child must be able to sit upright unassisted.</p> <p>WARNING! NEVER use LATCH for children weighing more than 35 lb. (16 kg).</p>
<p>Lap/Shoulder Belt and Tether</p>  <p>Install PG. 62</p>	
<p>Lap Belt ONLY and Tether</p>  <p>Install PG. 66</p>	

Parts List:

Please make sure there are no missing parts. Please contact Joie Consumer Service if anything is missing.

- 1 Headrest
- 2 Harness Pad (x2)
- 3 Harness Straps
- 4 Crotch Pad
- 5 Harness Adjustment Button
- 6 Harness Adjustment Strap
- 7 Recline Adjustment Lever
- 8 Harness Buckle Holder (x2)
- 9 Magnetic Chest Clip
- 10 Rotation Lever (x2)
- 11 Infant Insert
- 12 Side Impact Bolster
- 13 Shoulder Belt Path
- 14 Lower Anchor Attachments / Lap Belt Path
- 15 Headrest Adjustment Lever
- 16 Anti-Rebound Panel
- 17 Tether Strap
- 18 Tether Strap Adjuster
- 19 Tether Storage Clip
- 20 Lower Anchor Attachments Storage Door
- 21 Lower Anchor Attachment Strap Adjuster
- 22 Lower Anchor Attachment Strap
- 23 Lower Anchor Attachment (x2)
- 24 Lock-Off Release Button
- 25 Lock-Off Bar
- 26 Cup Holder (x2)
- 27 Turn Lock Indicator
- 28 Level Indicator
- 29 Instruction Manual Storage

Parts List:



Headrest Height Adjustment:

For safety and comfort, ensure the harness straps fit snugly and are positioned correctly on your child's shoulders.

1 - Locate the harness adjustment button (a) and press it down while pulling the shoulder harnesses (b) outward to loosen.

2 - Locate the headrest adjustment lever and squeeze it while moving the headrest up or down until it locks into one of the 10 available positions.

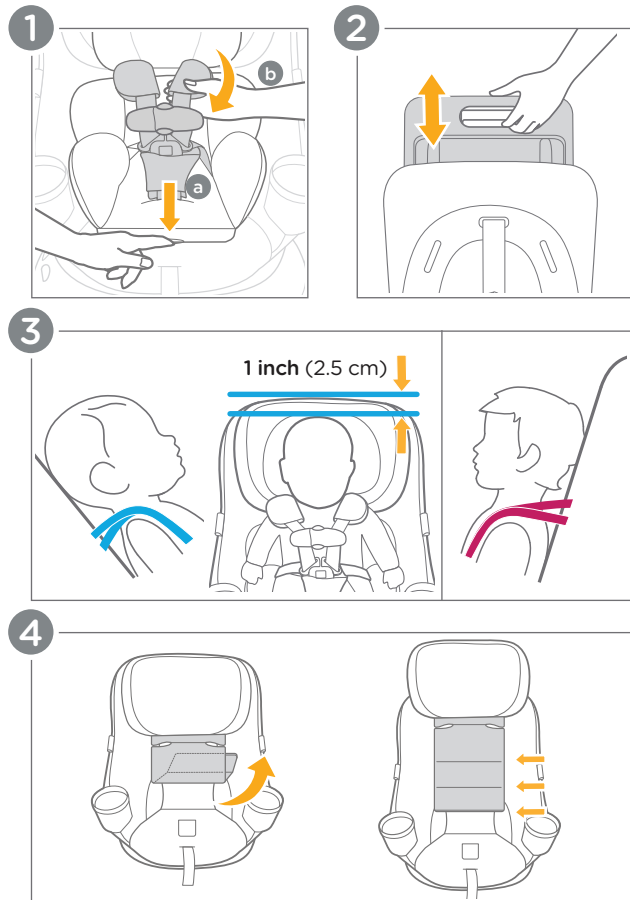
3 - Select **Rear-Facing** or **Forward-Facing**

Rear-Facing: Ensure the harness straps are **level** with or **slightly below** the top of your child's shoulders. Make sure your child's head is at least 1 in. (2.5 cm) below the top of the headrest.

Forward-Facing: Adjust the harness straps so they are **level** with or **slightly above** the top of your child's shoulders.

4 - The headrest back fabric has 3 folding positions. After adjusting the headrest, fold or unfold the back fabric to provide proper support.

Check the Final Fit: Have your child sit back in the child restraint and repeat **Step 1 - Headrest Height Adjustment** if necessary to ensure that the harness is snug and positioned correctly at the shoulders.

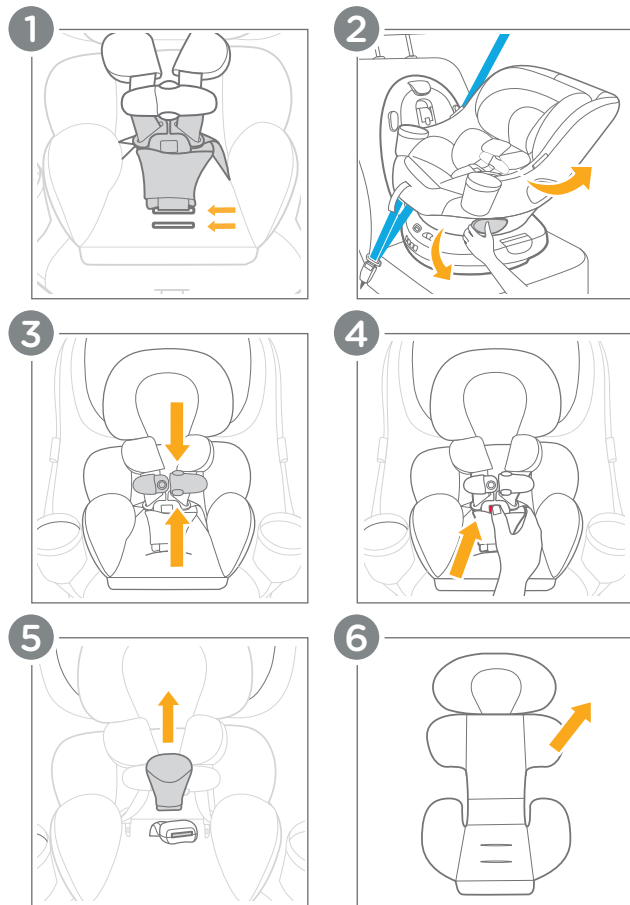


Crotch Buckle Adjustment:

For safety and comfort, the crotch buckle has two positions. Use the position that is closest to, but not under your child.

- 1 - The crotch buckle has two adjustable positions.
- 2 - Rotate the seat to the side position for easier access.
- 3 - Press the release buttons on the chest clip to separate.
- 4 - Press the crotch buckle button and remove the buckle tongues from the crotch buckle.
- 5 - Remove the crotch pad.
- 6 - If using the infant insert, gently pull the insert upwards, threading the crotch buckle through the insert to remove it.

(Crotch Buckle Adjustment continued on pg. 28)



Crotch Buckle Adjustment: (cont.)

7 - Lift the headrest pad flap up and out of the way. If using the side impact bolster, undo the two snaps inside the seat shell and pull the backrest fabric forward.

8 - Unbutton the side impact bolster from the seat pad on both sides. Unthread from the harness straps and pull up gently on the side impact bolster to remove it.

9 - Undo the snaps and pull up on the seat fabric around the harness adjustment strap.

10 - Locate the crotch buckle adjustment slots in the seat shell and squeeze/pinch the sides of the strap together.

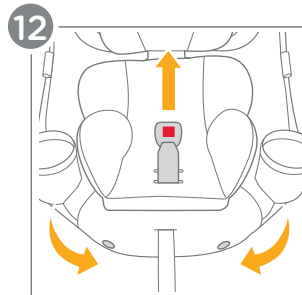
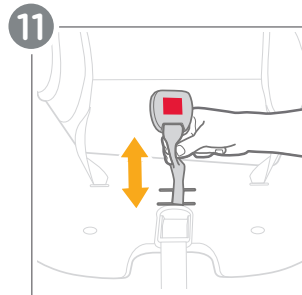
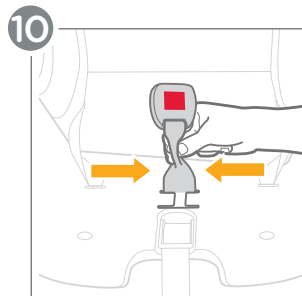
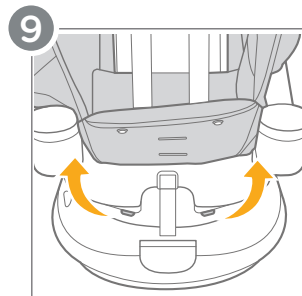
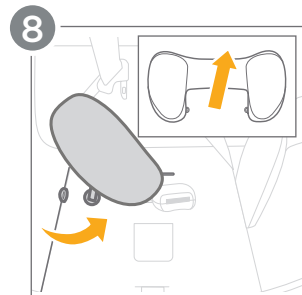
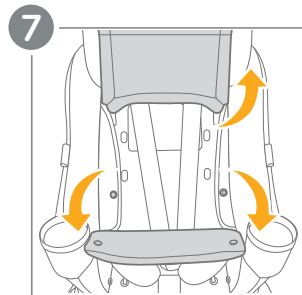
11 - Twist and slide the crotch buckle strap forward or backwards into the desired slot to best fit your child.

12 - Thread the crotch buckle back up through the seat fabric in the correct slot and reattach the seat fabric button snaps.

Reassemble the crotch pad, infant insert, and side impact bolster (if being used).

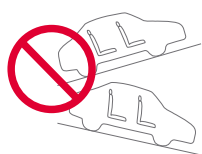
WARNING! ALWAYS ensure that the crotch buckle strap is **NOT** twisted and that the buckle button is facing outward.

IMPORTANT: ALWAYS ensure that the crotch buckle strap is properly secured by pulling up on the buckle.



Adjusting Recline:

ALWAYS adjust the recline when installing **Rear-Facing**.



Make sure the vehicle is on a flat and **LEVEL** surface.



NEVER adjust the recline when the vehicle is on an incline.

1 - Pull the rotation lever and turn the child restraint seat to either rear-facing or forward-facing based on your installation choice. Then place the child restraint on your vehicle seat.

2 - The recline can be adjusted by pulling the recline adjustment lever and pulling or pushing the seat into the desired position.

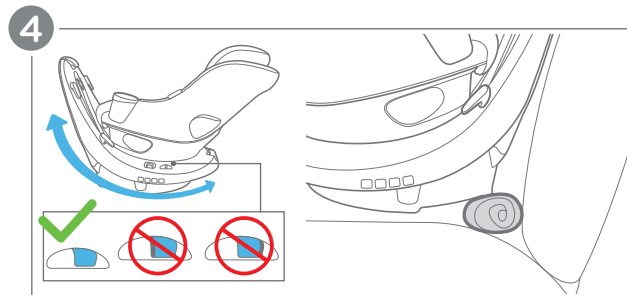
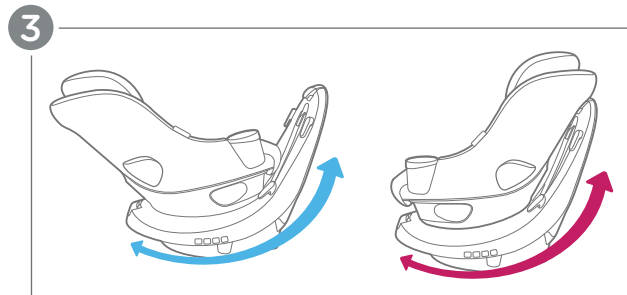
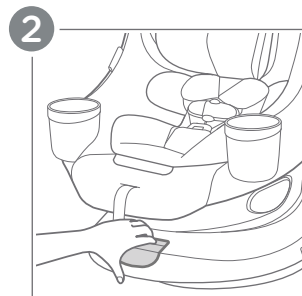
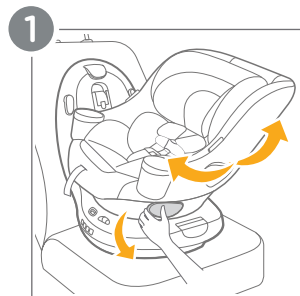
3 - This child restraint has 4 recline positions that can be used for either rear-facing or forward-facing.

ONLY use recline position 4 when installing forward-facing with a **LAP BELT ONLY**.

4 - When installing Rear-Facing: The level indicator on the child restraint window must show **FULLY BLUE** when placed on the vehicle seat.

If needed, a rolled towel may be placed under the child restraint at the vehicle seat crease, until the bubble is completely in the blue area.

After the seat has been installed, the seat must be uninstalled before adjusting the recline.



Removing Infant Insert:

The infant insert can be used as necessary, to provide a snug fit for small babies.

1 - Pull the rotation lever and turn the child restraint seat to the side position for easier access.

2 - Press the release buttons on the chest clip to separate.

3 - Press the button and remove the buckle tongues from the harness buckle.

4 - Remove the crotch pad.

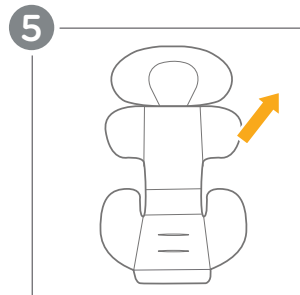
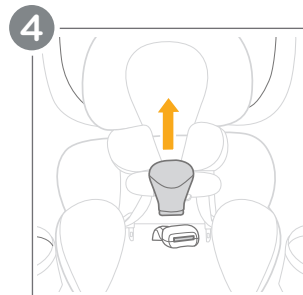
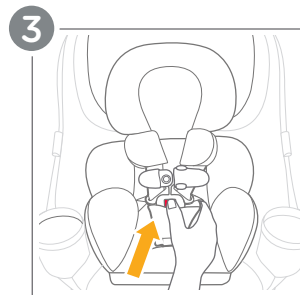
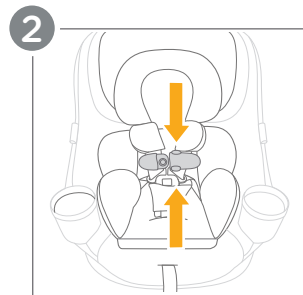
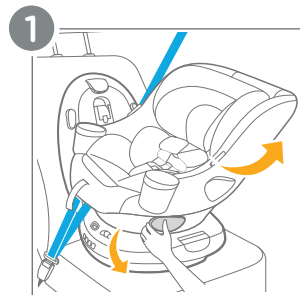
5 - Gently pull the infant insert upwards. Slide off the sleeve that covers the side impact bolster, then thread the harness buckle through the infant insert to remove it.

Reattach the crotch pad and harness pads (if being used).

IMPORTANT: The infant insert can be used for smaller babies, but **MUST** be removed once the child reaches 11 lb. (5 kg).

IMPORTANT: **NEVER** use the infant insert when forward-facing.

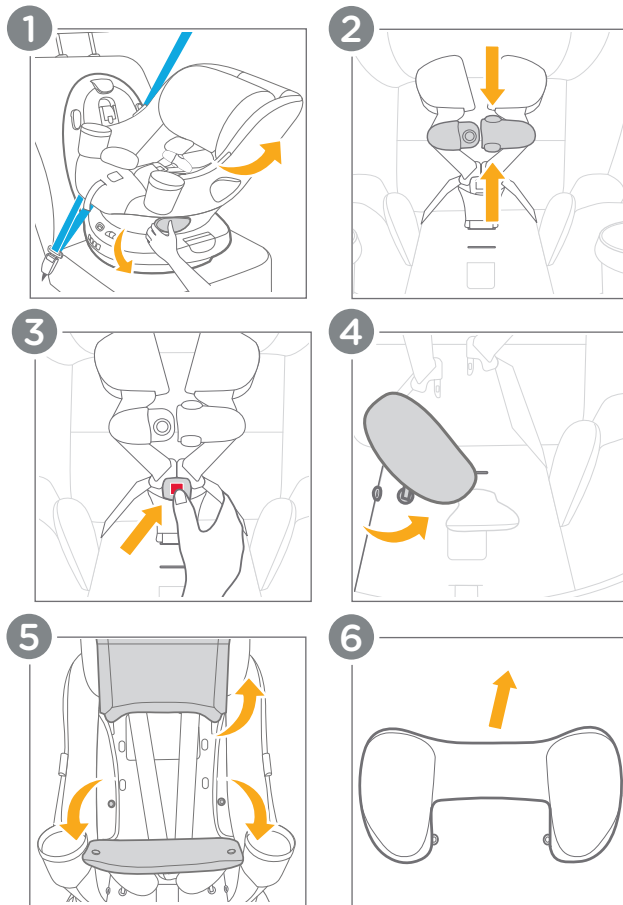
IMPORTANT: **NEVER** allow the infant insert to bunch or fold behind the child.



Removing Side Impact Bolster:

IMPORTANT: The side impact bolster **MUST** be used with children weighing under 40 lb. (18 kg).

- 1** - Pull the rotation lever and turn the child restraint seat to the side position for easier access.
- 2** - Unbuckle the harness by pressing the release buttons on the chest clip.
- 3** - Press the release buttons on the crotch buckle and remove both buckle tongues.
- 4** - Unbutton the side impact bolster from the seat pad on both sides.
- 5** - Undo the two snaps inside the seat shell and pull the backrest fabric forward.
- 6** - Unthread from the harness straps and pull up gently on the side impact bolster to remove it.



RF – Install Using Lower Anchor Attachments:

WARNING! DO NOT install by this method for a child weighing more than 35 lb. (16 kg).

WARNING! DO NOT use the tether when installing rear-facing.

INSTALL USING ONLY ONE METHOD.

NEVER install using **BOTH** seat belt and lower anchor attachments. **ONLY** install in a forward facing vehicle seat.

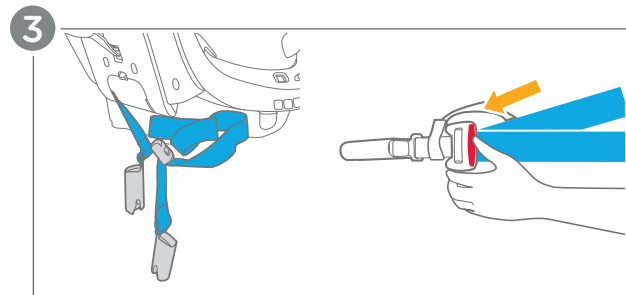
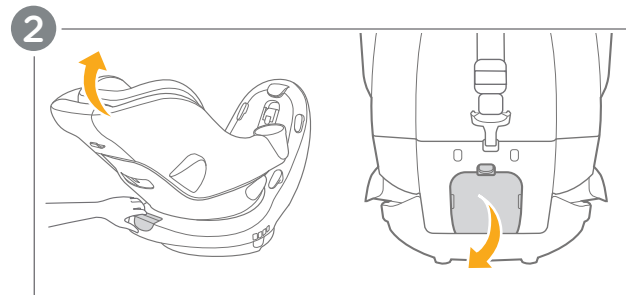
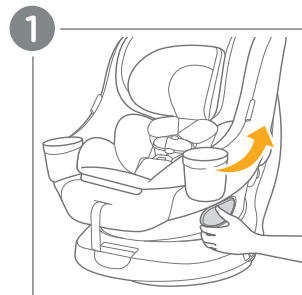
BEFORE INSTALLING, refer to **adjusting the recline** on pg. 30 and **properly storing the tether** on pg. 76.

1 - Pull the rotation lever and turn the child restraint seat to the rear-facing position.

2 - Recline the child restraint to the most upright position and open the lower anchor attachments storage door on the back of the child restraint base.

3 - Remove the lower anchor attachments that are secured permanently to the seat. Then press the button on the lower anchor attachment strap adjuster and pull to extend the lower anchor attachment straps to their full length.

(RF – Install Using Lower Anchor Attachments continued on pg. 38)



RF – Install Using Lower Anchor Attachments: (cont.)

4 - Open the lock-off bar on the child restraint base.

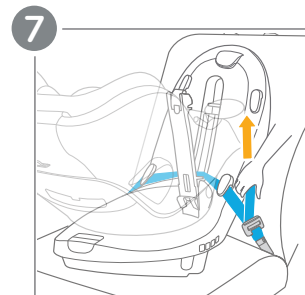
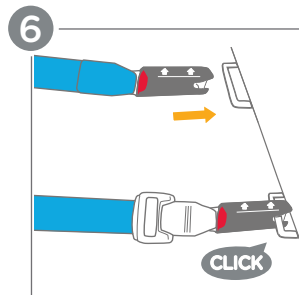
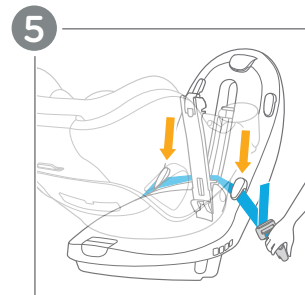
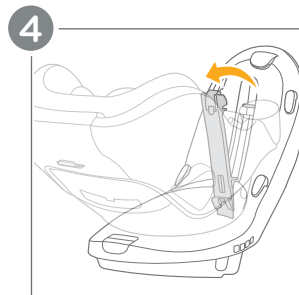
5 - Ensure that the lower anchor attachment straps are routed inside the lock-off bar and **UNDERNEATH** both belt guides on the child restraint base.

6 - Attach **BOTH** lower anchor attachments to the correct lower anchor points in your vehicle. Listen for a **CLICK**.

Tip The arrows on the sides of the lower anchor attachments should be pointing upwards. Refer to your vehicle's manual for specific lower anchor locations.

7 - Tighten the lower anchor attachment strap by pulling the loose end of the webbing. Push the child restraint down firmly while tightening to remove any slack in the strap.

(RF – Install Using Lower Anchor Attachments
continued on pg. 40)



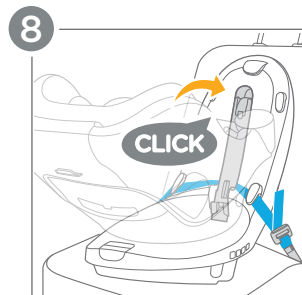
RF – Install Using Lower Anchor Attachments: (cont.)

8 - Once the lower anchor attachment strap is tight, close the lock-off bar. Listen for a **CLICK**. Keep your hands clear of the entire lock-off area while closing it.

After installing your child restraint, continue on to [Rear-Facing Securing Child](#) on pg. 50.

Check Install!

- ☐ The lock-off bar is securely locked.
- ☐ The lower anchor attachments are properly attached.
- ☐ The child restraint should be snug and **NOT MOVE** in any direction more than 1 in. (2.5 cm) at the belt path.



RF - Install Using Lap/Shoulder Belt:

WARNING! DO NOT use the tether when installing rear-facing.

INSTALL USING ONLY ONE METHOD.

NEVER install using **BOTH** seat belt and lower anchor attachments. Only install in a forward facing vehicle seat.

BEFORE INSTALLING, refer to **adjusting the recline on pg. 30** and **properly storing the tether on pg. 76**.

1 - Pull the rotation lever and turn the child restraint seat to the rear-facing position.

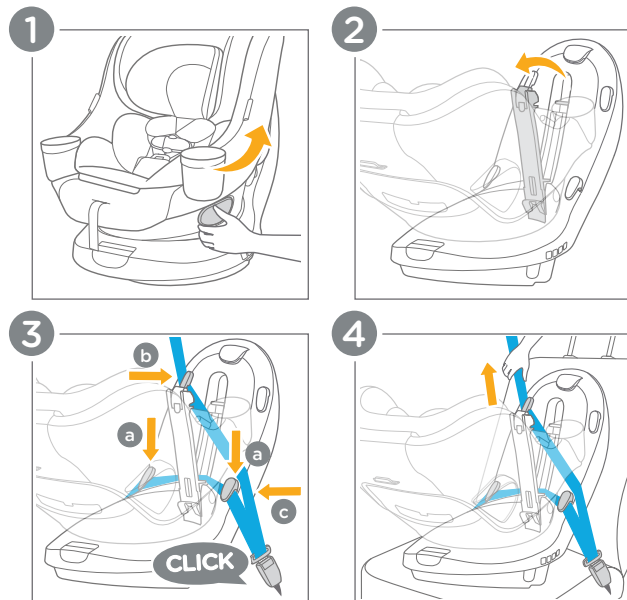
2 - Open the lock-off bar on the child restraint base.

3 - Thread the lap/shoulder belt through the belt path inside the lock-off bar on the child restraint base and buckle the lap/shoulder belt. The lap belt must be routed **UNDER BOTH** lap belt guides (a). The shoulder belt should be routed **UNDER ONLY** the shoulder belt guide that is closest to the retractor (b) and **ABOVE** the lap belt guides (c).

IMPORTANT: Ensure that the vehicle belt is not twisted and lies flat against the child restraint base.

4 - Tighten the lap/shoulder belt. Push the child restraint down firmly while tightening to remove any slack in the straps.

(RF - Install Using Lap/Shoulder Belt continued on pg. 44)



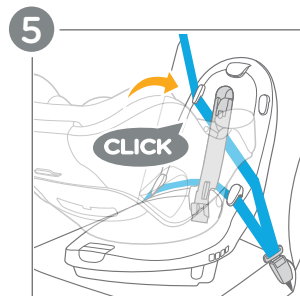
RF - Install Using Lap/Shoulder Belt: (cont.)

5 - Once the lap/shoulder belt is tight, close the lock-off bar. Listen for a **CLICK**. Keep your hands clear of the entire lock-off area while closing it.

After installing your child restraint, continue on to [Rear-Facing Securing Child](#) on pg. 50.

Check Install!

- ☐ The lock-off bar is securely locked.
- ☐ The vehicle belt is buckled and is as tight as possible around the child restraint. The vehicle belt is not loose or twisted.
- ☐ The child restraint should be snug and **NOT MOVE** in any direction more than 1 in. (2.5 cm) at the belt path.



RF – Install Using Lap Belt ONLY:

WARNING! DO NOT use the tether when installing rear-facing.

INSTALL USING ONLY ONE METHOD - NEVER install using **BOTH** seat belt and lower anchor attachments. **ONLY** install in a forward facing vehicle seat.

BEFORE INSTALLING, refer to **adjusting the recline** on pg. 30 and **properly storing the tether** on pg. 76.

1 - Pull the rotation lever and turn the child restraint seat to the rear-facing position.

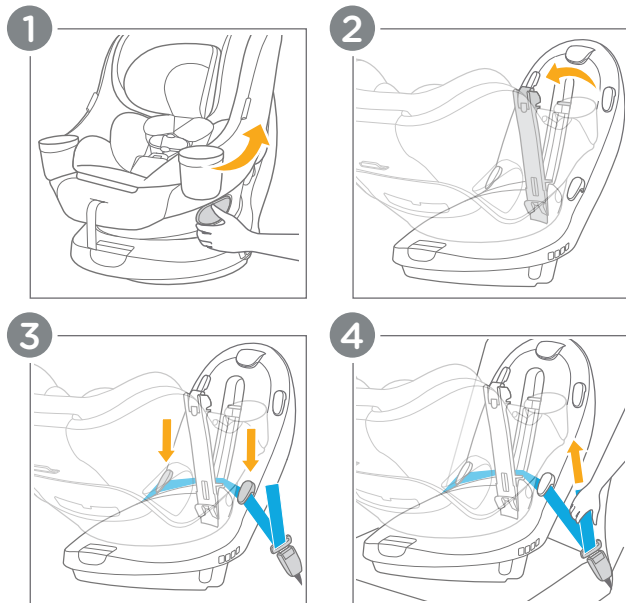
2 - Open the lock-off bar on the child restraint base.

3 - Thread the lap belt through the belt path inside the lock-off bar on the child restraint base and buckle the lap belt. Ensure that the lap belt is **UNDERNEATH** both belt guides.

IMPORTANT: Ensure that the vehicle belt is not twisted and lies flat against the child restraint base.

4 - Tighten the lap belt. Push the child restraint down firmly while tightening to remove any slack in the strap.

(RF – Install Using Lap Belt ONLY continued on pg. 48)



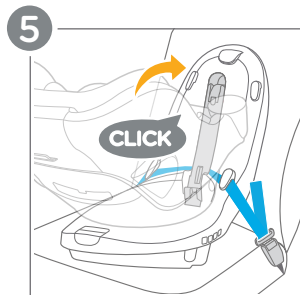
RF – Install Using Lap Belt ONLY: (cont.)

5 - Once the lap belt is tight, close the lock-off bar. Listen for a **CLICK**. Keep your hands clear of the entire lock-off area while closing it.

After installing your child restraint, continue on to [Rear-Facing Securing Child](#) on pg. 50.

Check Install!

- ☐ The lock-off bar is securely locked.
- ☐ The vehicle belt is buckled and is as tight as possible around the child restraint. The vehicle belt is not loose or twisted.
- ☐ The child restraint should be snug and **NOT MOVE** in any direction more than 1 in. (2.5 cm) at the belt path.



Rear-Facing Securing Child:

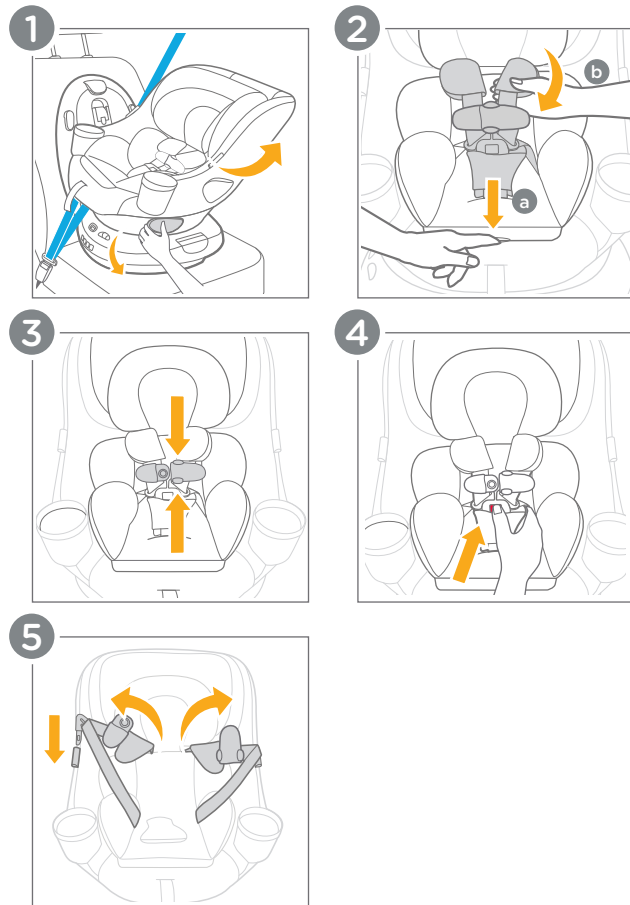
IMPORTANT: DO NOT use snowsuits or bulky garments when placing your child in the seat. They can prevent the harness straps from being tightened properly. To keep your child warm, buckle first, then use a blanket or backwards coat.

- 1 - Pull the rotation lever and turn the child restraint seat to the side position for easier access.
- 2 - Locate the harness adjustment button (a) and press it down while pulling the shoulder harnesses (b) outward to loosen.
- 3 - Press the release buttons on the chest clip to separate.
- 4 - Press the crotch buckle button and remove the buckle tongues from the harness buckle.

IMPORTANT: The child must be in a seated position against both the back and bottom of the seat with no gap behind the child. DO NOT allow the child to slouch.

- 5 - Spread apart the harness straps and insert the buckle tongues into the loops on either side of the child restraint to keep the straps out of the way. Place your child into the child restraint and gently guide the child's arms through the shoulder harness straps.

(Rear-Facing Securing Child continued on pg. 52)



Rear-Facing Securing Child: (cont.)

6 - The top of the child's head **MUST** be at least 1 in. (2.5 cm) below the top of the child restraint and the harness straps **MUST** be **AT** or **JUST BELOW** the child's shoulders to avoid injury. **If NOT, please refer to Headrest Height Adjustment on pg. 24.**

7 - Insert the buckle tongues into the buckle. Listen for a **CLICK**. Pull on the buckle to make sure it is properly attached.

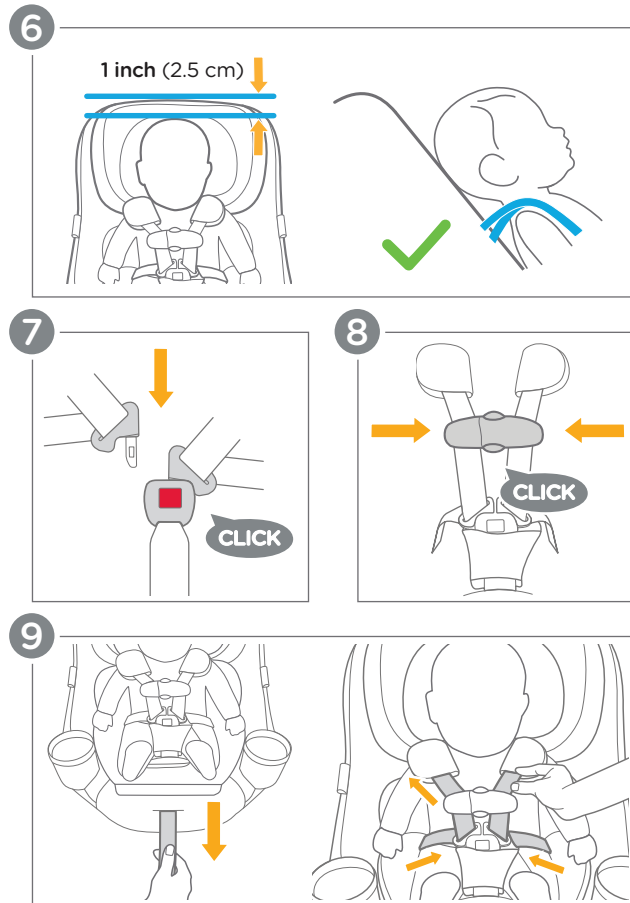
8 - Snap the chest clip together. Listen for a **CLICK**. Temporarily slide it towards the buckle before tightening of the harness straps.

9 - Pull on the harness adjustment strap to tighten the harness. Slide any excess strap length from the child's waist up through the buckle towards the shoulders, and repeat this step until the harness is secure. You should **NOT** be able to vertically pinch the harness strap.

WARNING! Ensure that nothing interferes with the harness. Ensure that the harness straps are snug around the child and lay flat. Serious injury or death could occur to a child that is not secured properly. If the child is not secured properly, the child could be ejected in a sudden stop or crash, resulting in serious injury or death.

Tip The harness should be snug around your child's waist and shoulders. It may take a few adjustments, so be patient!

(Rear-Facing Securing Child continued on pg. 54)



Rear-Facing Securing Child: (cont.)

10 - Without pressing the harness adjustment button, pull forward firmly on the harness straps at the shoulder. If the straps loosen, clean the harness adjustment button and strap (see pg. 87).

11 - Position the chest clip at the child's **ARMPIT LEVEL**.

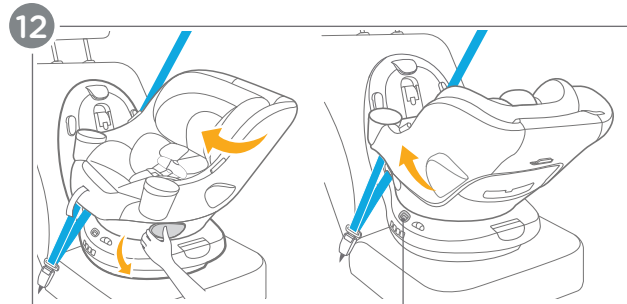
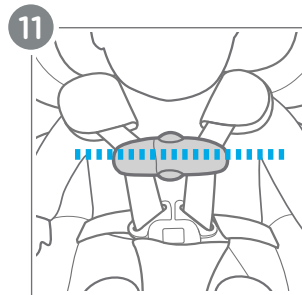
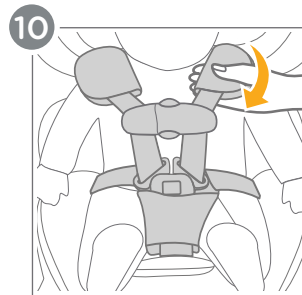
12 - Pull the rotation lever and turn the child restraint seat to the **REAR-FACING** position. Ensure that the turn lock indicator is fully **GREEN**.

Check Setup!

☐ **The harness is snug** – a snug harness cannot be pinched vertically, and should not allow any slack. If the harness straps are not snugly adjusted, the child may be ejected from the seat in the event of a crash.

IMPORTANT: A snug strap should not allow any slack. It lies in a relatively straight line without sagging. It does not press on the child's flesh or push the child's body into an unnatural position.

- ☐ **The chest clip and buckle are secured properly.**
- ☐ **The chest clip is at the child's armpit level.**
- ☐ **The child's head is at least 1 in. (2.5 cm) below the top of the headrest.**
- ☐ **The shoulder straps are AT or JUST BELOW the child's shoulders.**
- ☐ **The turn lock indicator is showing fully GREEN.**



WARNING! ALWAYS ensure that the turn lock indicator is fully green while the vehicle is in motion, even when the child is not in the seat.

NEVER rotate the child restraint while the vehicle is in motion.

FF - Install Using LATCH:

WARNING! DO NOT install by this method for a child weighing more than 35 lb. (16 kg).

INSTALL USING ONLY ONE METHOD.

NEVER install using BOTH seat belt and LATCH.

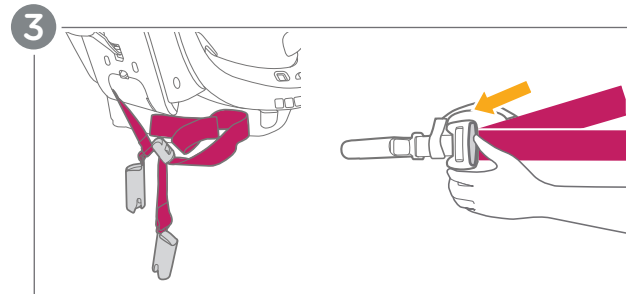
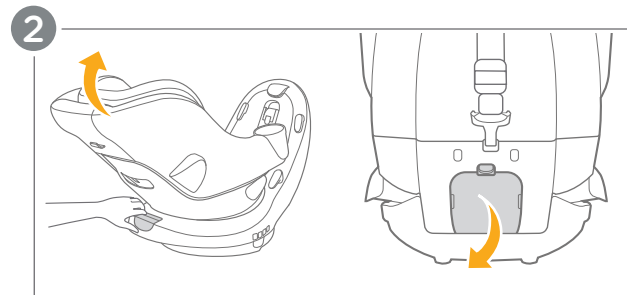
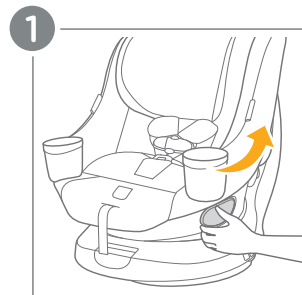
BEFORE INSTALLING, refer to adjusting the recline on pg. 30.

1 - Pull the rotation lever and turn the child restraint seat to the rear-facing position.

2 - Recline the child restraint to the most upright position and open the lower anchor attachments storage door on the back of the child restraint base.

3 - Remove the lower anchor attachments that are secured permanently to the seat. Then press the button on the lower anchor attachment strap adjuster and pull to extend the lower anchor attachment straps to their full length.

(FF - Install Using LATCH continued on pg. 58)



FF - Install Using LATCH: (cont.)

4 - Locate the top tether stored on the back of the child restraint base and unhook it from its storage. Loosen the tether strap fully by pulling up on the tether strap adjuster (a).

Then place the child restraint on the vehicle seat and lay the tether strap across the back of the vehicle seat.

Check your vehicle owner's manual for proper routing of the tether strap.

5 - Open the lock-off bar on the child restraint base.

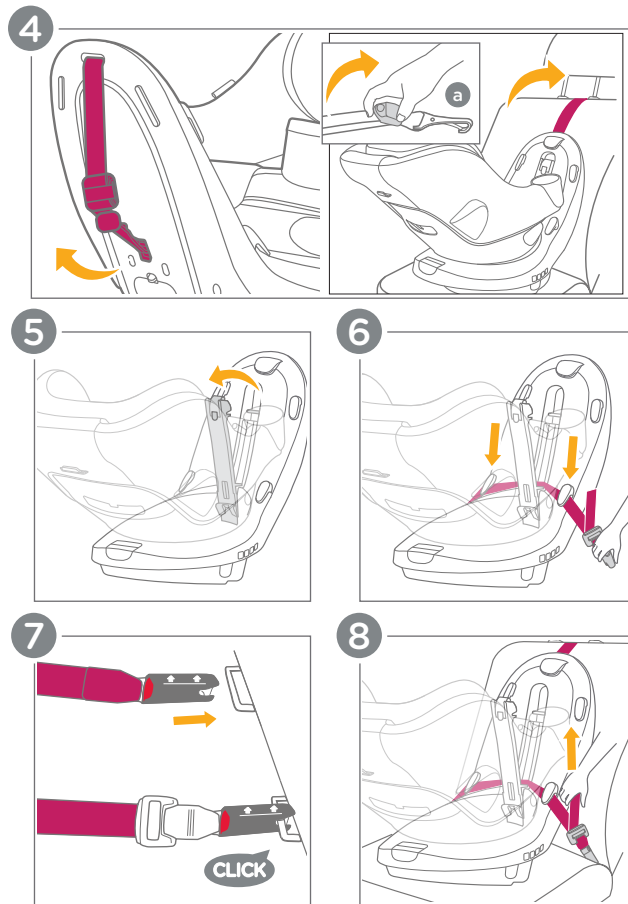
6 - Ensure that the lower anchor attachment straps are routed inside the lock-off bar and **UNDERNEATH** both belt guides on the child restraint base.

7 - Attach **BOTH** lower anchor attachments to the correct lower anchor points in your vehicle.

Tip The arrows on the sides of the lower anchor attachments should be pointing upwards. Refer to your vehicle's manual for specific lower anchor locations.

8 - Tighten the lower anchor attachment strap by pulling the loose end of the webbing. Push the child restraint down firmly while tightening to remove any slack in the strap.

(FF - Install Using LATCH continued on pg. 60)



FF - Install Using LATCH: (cont.)

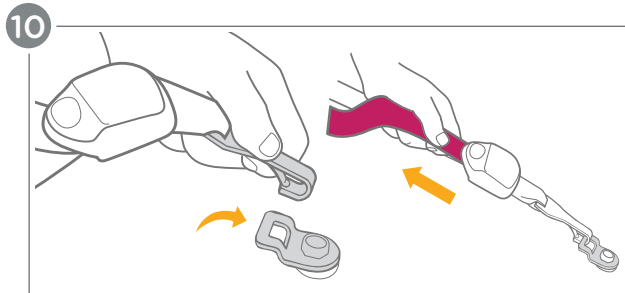
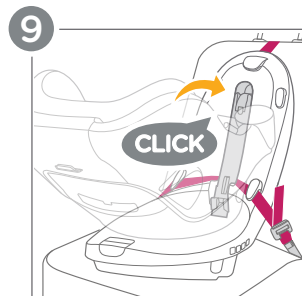
9 - Once the lower anchor attachment strap is tight, close the lock-off bar. Listen for a **CLICK**. Keep your hands clear of the entire lock-off area while closing it.

10 - Attach the tether to your vehicle's tether attachment point. Pull the loose end of the webbing on the top tether strap to tighten it. There should be no slack in the strap.

After installing your child restraint, continue on to **Forward-Facing Securing Child** on pg. 70.

Check Install!

- ☐ The lock-off bar is securely locked and the tether has no slack.
- ☐ The lower anchor attachments are properly attached.
- ☐ The child restraint should be snug and **NOT MOVE** in any direction more than 1 in. (2.5 cm) at the belt path.



FF - Install Using Lap/Shoulder Belt:

INSTALL USING ONLY ONE METHOD.

NEVER install using **BOTH** seat belt and LATCH.

ONLY install in a forward facing vehicle seat.

BEFORE INSTALLING, refer to **Adjusting Recline** on pg. 30.

1 - Pull the rotation lever and turn the child restraint seat to the rear-facing position.

2 - Open the lock-off bar on the child restraint base.

3 - Locate the top tether stored on the back of the child restraint base and unhook it from its storage. Loosen the tether strap fully by pulling up on the tether strap adjuster (a).

Then place the child restraint on the vehicle seat and lay the tether strap across the back of the vehicle seat.

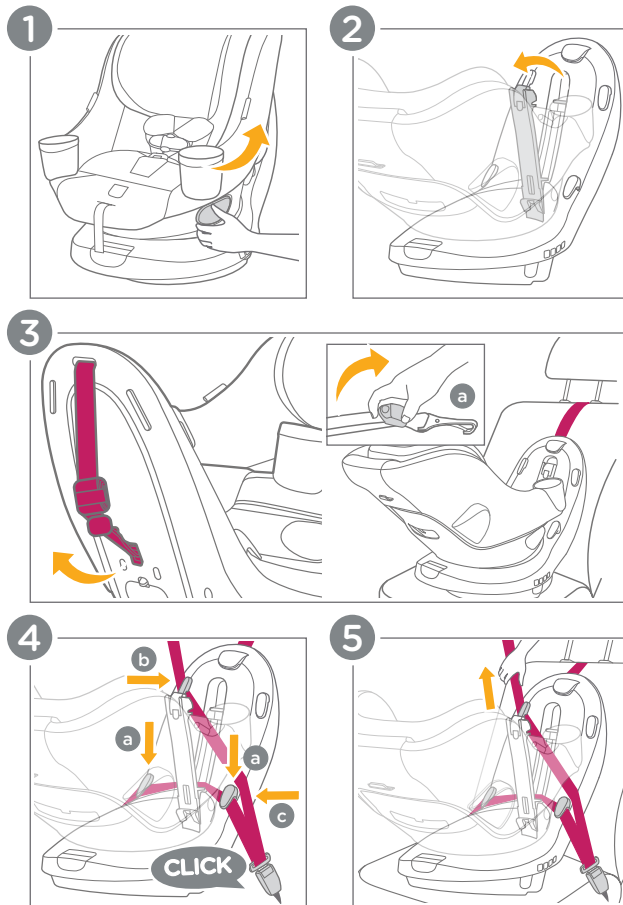
Check your vehicle owner's manual for proper routing of the tether strap.

4 - Thread the lap/shoulder belt through the belt path inside the lock-off bar on the child restraint base and buckle the lap/shoulder belt. The lap belt must be routed **UNDER BOTH** lap belt guides (a). The shoulder belt should be routed **UNDER ONLY** the shoulder belt guide that is closest to the retractor (b) and **ABOVE** the lap belt guides (c).

IMPORTANT: Ensure that the vehicle belt is not twisted and lies flat against the child restraint base.

5 - Tighten the lap/shoulder belt. Push the child restraint down firmly while tightening to remove any slack in the straps.

(FF - Install Using Lap/Shoulder Belt continued on pg. 64)



FF – Install Using Lap/Shoulder Belt: (cont.)

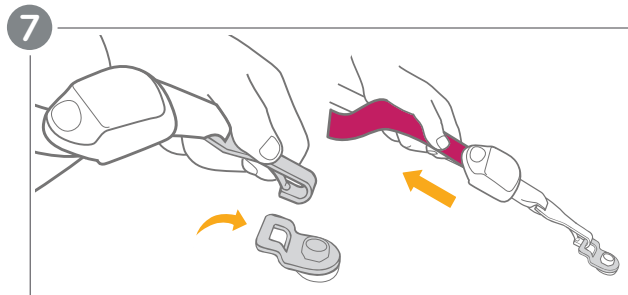
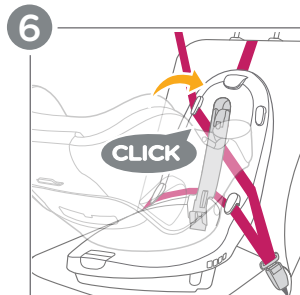
6 - Once the lap/shoulder belt is tight, close the lock-off bar. Listen for a **CLICK**. Keep your hands clear of the entire lock-off area while closing it.

7 - Attach the tether to your vehicle's tether attachment point. Pull the loose end of the webbing on the top tether strap to tighten it. There should be no slack in the strap.

After installing your child restraint, continue on to **Forward-Facing Securing Child** on pg. 70.

Check Install!

- ☐ The lock-off bar is securely locked and the tether has no slack.
- ☐ The vehicle belt is buckled and is as tight as possible around the child restraint. The vehicle belt is not loose or twisted.
- ☐ The child restraint should be snug and **NOT MOVE** in any direction more than 1 in. (2.5 cm) at the belt path.



FF - Install Using Lap Belt ONLY:

INSTALL USING ONLY ONE METHOD - NEVER install using BOTH seat belt and LATCH. **ONLY** install in a forward-facing vehicle seat.

BEFORE INSTALLING refer to **Adjusting Recline** on pg. 30.

WARNING! When installing forward-facing with lap belt only, **ALWAYS** recline the seat to **POSITION 4**.

1 - Pull the rotation lever and turn the child restraint seat to the rear-facing position.

2 - Open the lock-off bar on the child restraint base.

3 - Locate the top tether stored on the back of the child restraint base and unhook it from its storage. Loosen the tether strap fully by pulling up on the tether strap adjuster (a).

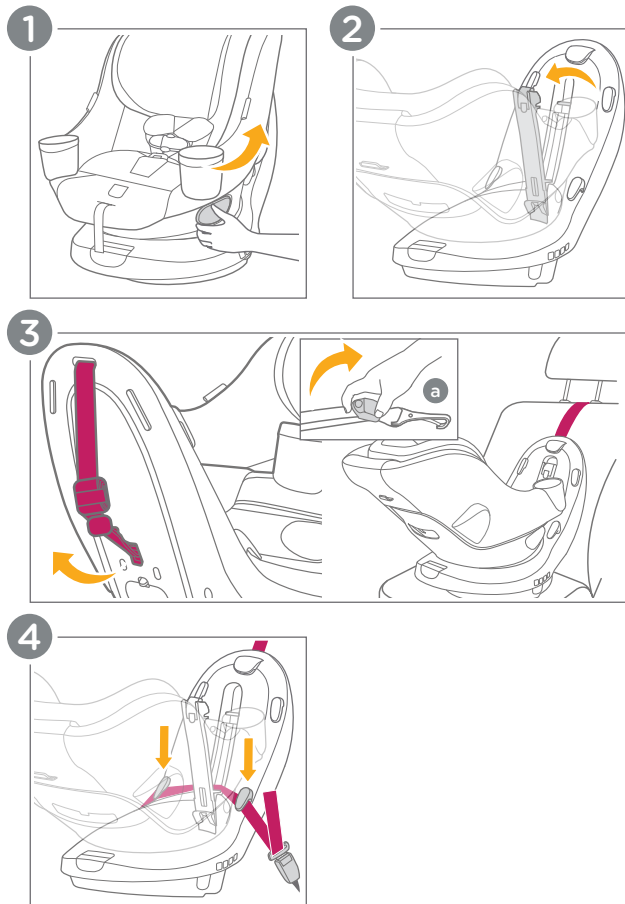
Then place the child restraint on the vehicle seat and lay the tether strap across the back of the vehicle seat.

Check your vehicle owner's manual for proper routing of the tether strap.

4 - Thread the lap belt through the belt path inside the lock-off bar on the child restraint base and buckle the lap belt. Ensure that the lap belt is **UNDERNEATH** both belt guides.

IMPORTANT: Ensure that the vehicle belt is not twisted and lies flat against the child restraint base.

(FF - Install Using Lap Belt ONLY continued on pg. 68)



FF – Install Using Lap Belt ONLY: (cont.)

5 - Tighten the lap belt. Push the child restraint down firmly while tightening to remove any slack in the strap.

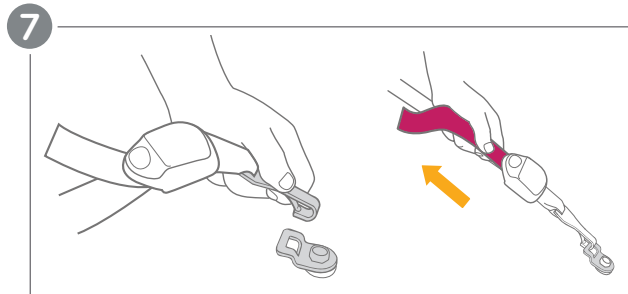
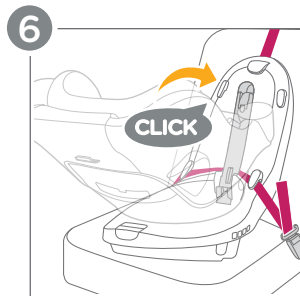
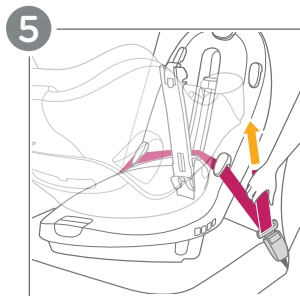
6 - Once the lap belt is tight, close the lock-off bar. Listen for a **CLICK**. Keep your hands clear of the entire lock-off area while closing it.

7 - Attach the tether strap to your vehicle's tether attachment point. Pull the loose end of the webbing on the top tether strap to tighten it. There should be no slack in the strap.

After installing your child restraint, continue on to **Forward-Facing Securing Child** on pg. 70.

Check Install!

- ☐ The lock-off bar is securely locked and the tether has no slack.
- ☐ The vehicle belt is buckled and is as tight as possible around the child restraint. The vehicle belt is not loose or twisted.
- ☐ The child restraint should be snug and **NOT MOVE** in any direction more than 1 in. (2.5 cm) at the belt path.



Forward-Facing Securing Child:

IMPORTANT: **DO NOT** use snowsuits or bulky garments when placing your child in the seat. They can prevent the harness straps from being tightened properly. To keep your child warm, buckle first, then use a blanket or backwards coat.

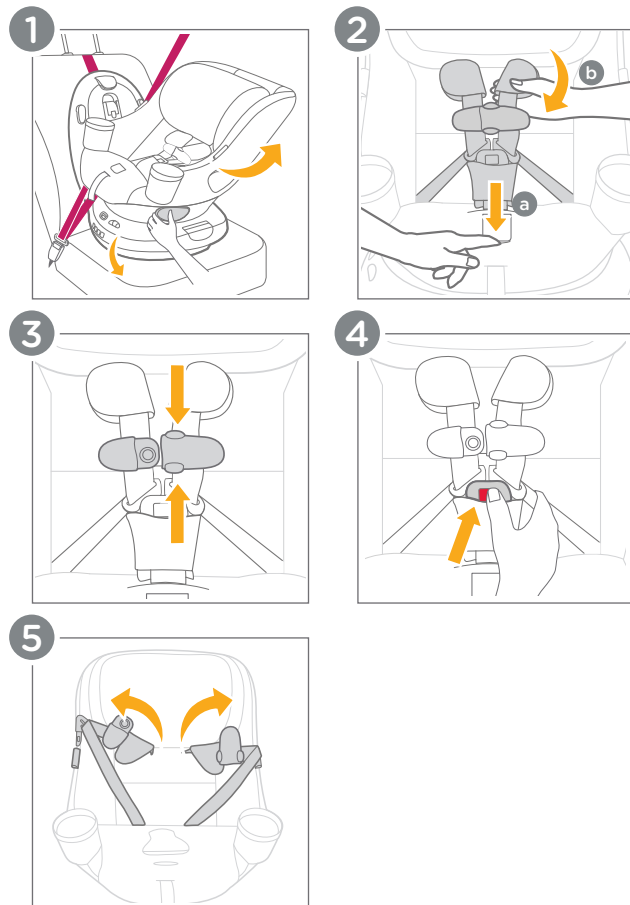
- 1 - Pull the rotation lever and turn the child restraint seat to the side position for easier access.
- 2 - Locate the harness adjustment button (a) and press it down while pulling the shoulder harnesses (b) outward to loosen.
- 3 - Press the release buttons on the chest clip to separate.
- 4 - Press the crotch buckle button and remove the buckle tongues from the harness buckle.

IMPORTANT: The child must be in a seated position against both the back and bottom of the seat with no gap behind the child. **DO NOT** allow the child to slouch.

- 5 - Spread apart the harness straps and insert the buckle tongues into the loops on either side of the child restraint to keep the straps out of the way. Place your child into the child restraint and gently guide the child's arms through the shoulder harness straps.

IMPORTANT: **NEVER** use the infant insert when forward-facing.

(Forward-Facing Securing Child continued on pg. 72)



Forward-Facing Securing Child: (cont.)

6 - Insert the buckle tongues into the buckle. Listen for a **CLICK**. Pull on the buckle to ensure that it is properly attached.

7 - Snap the chest clip together. Listen for a **CLICK**. Temporarily slide it towards the buckle for tightening of the harness straps.

8 - Pull on the harness adjustment strap to tighten the harness. Slide any excess strap length from the child's waist up through the buckle towards the shoulders, and repeat this step until the harness is secure. You should **NOT** be able to vertically pinch the harness straps.

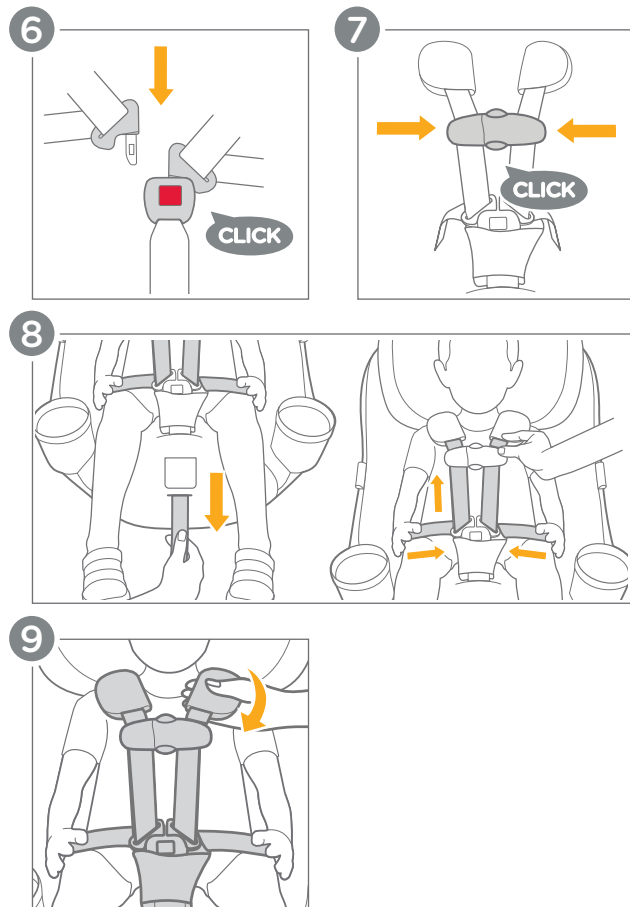
9 - Without pressing the harness adjustment button, pull forward firmly on the harness straps at the shoulder. If the straps loosen, clean the harness adjustment button and strap (see pg. 87).

WARNING! Ensure that nothing interferes with the harness. Ensure that the harness straps are snug around the child and lay flat.

Serious injury or death could occur to a child that is not secured properly. If the child is not secured properly, the child could be ejected in a sudden stop or crash, resulting in serious injury or death.

Tip The harness should be snug around your child's waist and shoulders. It may take a few adjustments, so be patient!

(Forward-Facing Securing Child continued on pg. 74)



Forward-Facing Securing Child: (cont.)

10 - Harness straps **MUST** be **AT** or **JUST ABOVE** child's shoulders. If **NOT**, please refer to **Headrest Height Adjustment** on pg. 24.

11 - Position the chest clip at the child's armpit level.

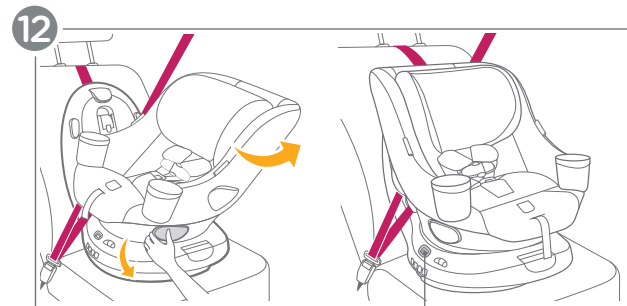
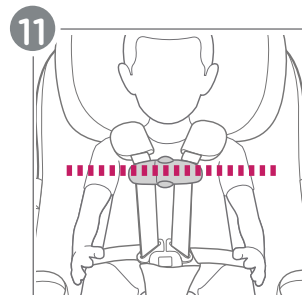
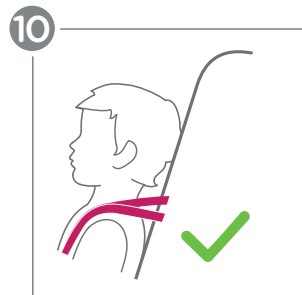
12 - Pull the rotation lever and turn the child restraint seat to the **FORWARD-FACING** position. Ensure that the turn lock indicator is fully **GREEN**.

Check Setup!

- ☐ **The harness is snug** - a snug harness cannot be pinched vertically, and should not allow any slack. If the harness straps are not snugly adjusted, the child may be ejected from the seat in the event of a crash.

IMPORTANT: A snug strap should not allow any slack. It lies in a relatively straight line without sagging. It does not press on the child's flesh or push the child's body into an unnatural position.

- ☐ **The chest clip and buckle are secured properly.**
- ☐ **The chest clip is at the child's armpit level.**
- ☐ **The shoulder straps are AT or JUST ABOVE** the child's shoulders.
- ☐ **The turn lock indicator is showing fully GREEN.**



WARNING! ALWAYS ensure that the turn lock indicator is fully green while the vehicle is in motion, even when the child is not in the seat.

NEVER rotate the child restraint while the vehicle is in motion.

Storing LATCH:

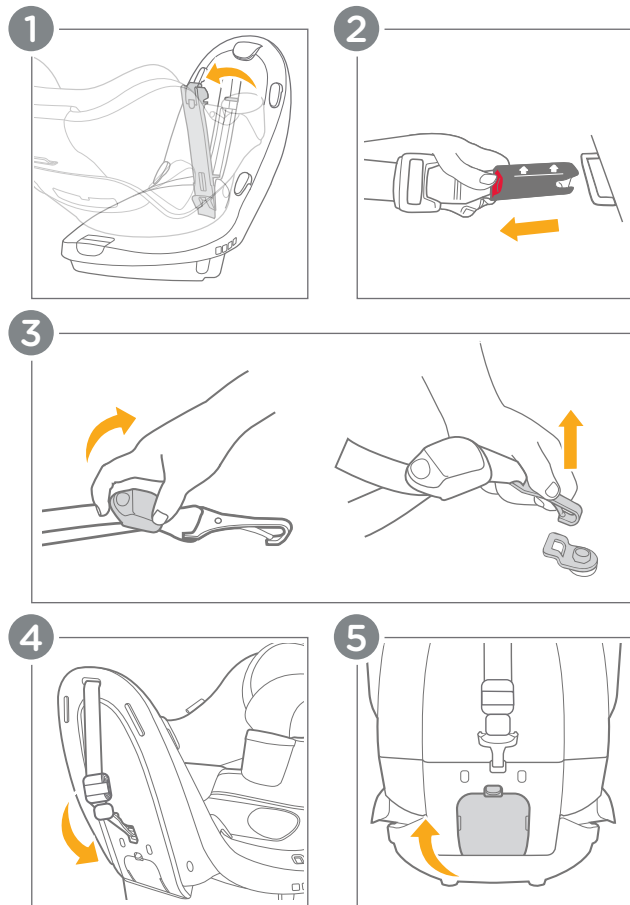
1 - Open the lock-off bar.

2 - Press the red buttons on both lower anchor attachments and pull to remove them from the lower anchor points in your vehicle.

3 - Lift the tether strap adjuster and pull to release the tether strap. Then unclip the tether from your vehicle.

4 - Store the tether on the tether storage clip on the back of the child restraint base when not in use.

5 - Store the lower anchor attachments and strap inside the lower anchor attachments storage door on the back of the child restraint base when not in use. The seat must be in the fully upright position to access the door.

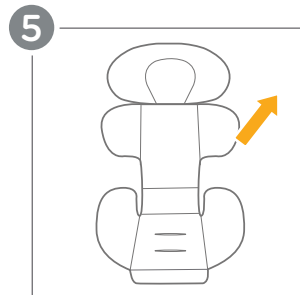
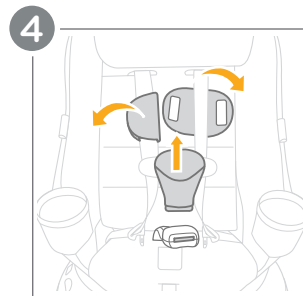
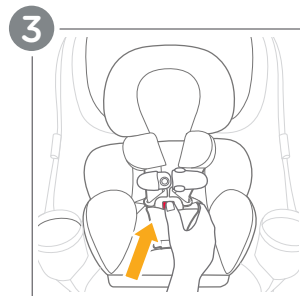
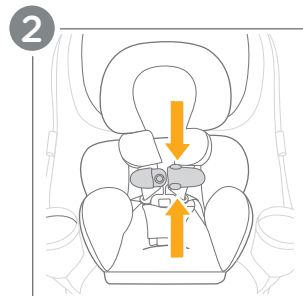
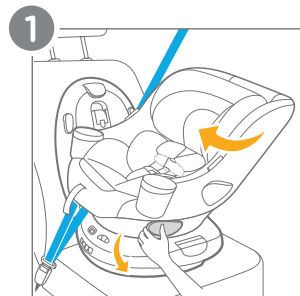


Removing Softgoods:

WARNING! NEVER use this child restraint without the softgoods in place.

- 1 - Pull the rotation lever and turn the child restraint seat to the side position.
- 2 - Press the release buttons on the chest clip to separate.
- 3 - Press the crotch buckle button and remove the buckle tongues from the harness buckle.
- 4 - Remove the crotch pad and the harness pads.
- 5 - If attached, gently pull the infant insert upwards. Slide off the sleeve that covers the side impact bolster, then thread the harness buckle through the infant insert to remove it.

(Removing Softgoods continued on pg. 80)



Removing Softgoods: (cont.)

6 - On the BACK of the headrest, unhook BOTH elastic straps of the headrest cover from the headrest.

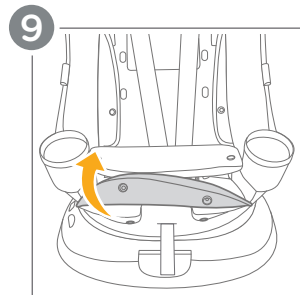
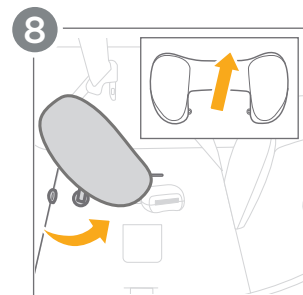
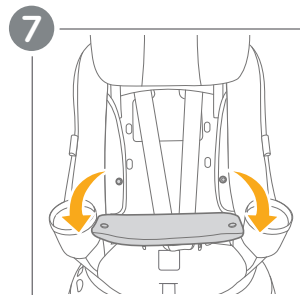
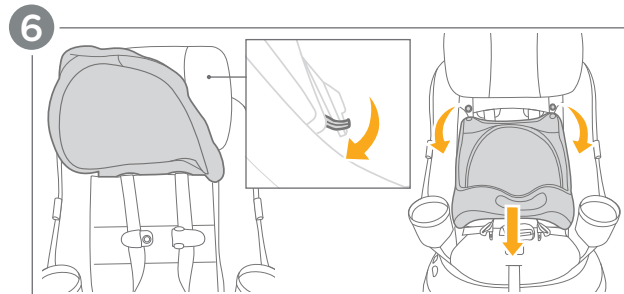
Then pull the headrest cover forward and undo BOTH snaps on the bottom of the headrest cover and remove the headrest cover.

7 - Undo the two snaps inside the seat shell, pull the backrest fabric forward, and slide the buckle through the fabric slot.

8 - If attached, unbutton the side impact bolster from the seat pad on both sides. Unthread from the harness straps and pull up gently on the side impact bolster to remove it.

9 - Undo the two snaps on the bottom of the seat fabric.

(Removing Softgoods continued on pg. 82)



Removing Softgoods: (cont.)

10 - Pull down on the fabric on either side of the seat to release it from around the side impact pods.

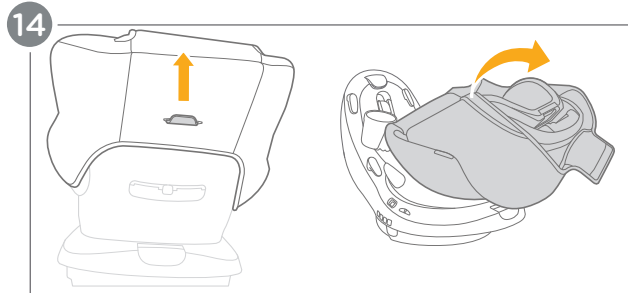
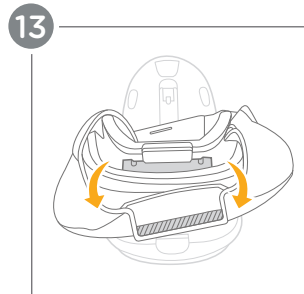
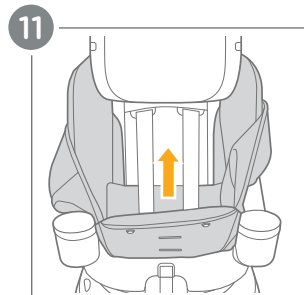
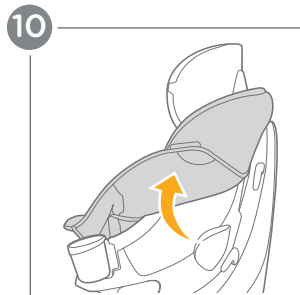
11 - Lift the bottom fabric up and away from the seat shell.

12 - Lower the headrest to the LOWEST position.

13 - Undo the clip on the fabric from the top of the seat shell.

14 - Pull the softgoods up around the seat shell and completely remove them.

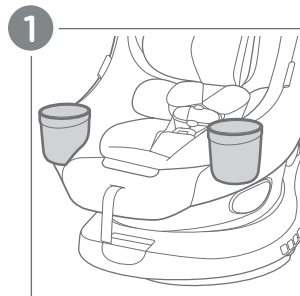
To reassemble, follow these steps in reverse order.



Cup Holders:

1 - DO NOT use the cup holders for hot beverages.

IMPORTANT: The maximum recommended weight in each cup holder is 1 lb. (0.5 kg).

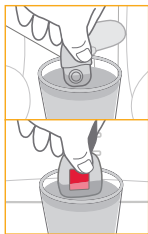


Care and Maintenance:

Washing the Seat Pads: Refer to the care label attached to the fabrics for washing and drying instructions. **DO NOT** attempt to remove the foam or tape from under the seat pad.

Cleaning the Seat Shell and Foams: Use only mild detergent, water, and a soft cloth to clean the shell, base, and foams. Air dry after cleaning. **NEVER** use bleach or any other harsh chemicals anywhere on the child restraint.

Cleaning the Buckle, Chest Clip, Harness, and LATCH straps: Hand rinse the buckle and chest clip using warm water only. **DO NOT** use soaps, solvents, or lubricants. These can cause malfunctions. Air dry the buckle and chest clip. Use a damp soft cloth and mild detergent to hand wipe the harness and LATCH straps clean. **DO NOT** submerge or saturate the harness or LATCH straps. Doing so may compromise the safety of the straps.



Storage: When not in use for a long period, remove the child restraint from the vehicle seat. Store the child restraint in a cool, dry place that your child does not have access to.

Normal Wear and Tear: It is normal for the fabric to fade from sunlight and show wear and tear over time even when used normally.

Regular Checks: Regularly check that everything functions properly. If any parts are torn, broken, or missing stop using immediately and contact Joie for replacement parts.

Care and Maintenance:

Keeping Your Harness Adjustment Button & Strap Clean:

A clean harness adjustment button and strap are key to a properly functioning harness. Regularly check the button and strap for dirt and debris, and clean them as needed.

Cleaning Steps:

1. Expose the button: Remove the softgoods (fabric) from the front of the car seat to access the harness adjustment button.

2. Open the mechanism: Push down on the lever on the back of the button. This will expose the small teeth and any trapped debris. Pull the harness adjustment strap out slightly to help loosen debris.

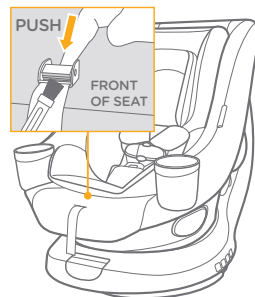
3. Clean the button and strap: Use a soft, nylon-bristled brush to remove any dirt or debris. For stubborn debris or residue, you can use a vacuum cleaner, a damp cloth, or a flat, plastic edged tool to scrape. **NEVER** use a sharp or metal tool.

4. Test and reassemble: Test the harness to ensure it's working correctly. Reattach the softgoods to the seat and then test again.

Important:

DO NOT use harsh cleaning chemicals.

DO NOT saturate the harness adjustment strap with liquids.



Joie Baby USA Consumer Service Contact Info.

Address: 70 Thousand Oaks Blvd., Morgantown, PA 15543

Email: info.us@joiebaby.com • **Phone:** 1-866-798-7866



Effortlessly happy.

Helping parents be their best
with worry-free baby gear.