

Joie™

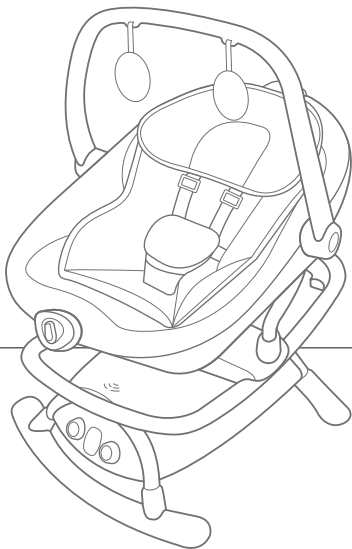
Instruction Manual

cinnamon™

2-in-1 glider and rocker

Glider – Weight: birth up to 25 lb. (11.5 kg)
Height: birth up to 30 in. (76 cm)

Rocker – Weight: birth up to 20 lb. (9 kg)
Height: birth up to 27 in. (69 cm)



product
guide videos



IMPORTANT!

Read the instructions in this manual before use of the product.
Keep this manual for future use.

Contents:

- 3 Warranty Information
- 4 Warnings
- 12 Parts List
- 14 Assembling Glider & Rocker
- 22 Using Buckle
- 24 Using Waist & Shoulder Harness Straps
- 26 Adjusting Recline
- 26 Adjusting Handle
- 28 Using Rock-Stop Foot
- 28 Using Vibration
- 30 Using Control Panel
- 34 Using AC Adapter
- 36 Using Toys
- 36 Using Infant Insert
- 38 Using Head Support
- 38 Removing Softgoods
- 42 Care & Maintenance

Child Usage Requirements

This product is suitable for use with children who meet the following requirements:

Glider - Weight: birth up to 25 lb. (11.5 kg)
Height: birth up to 30 in. (76 cm)

Rocker - Weight: birth up to 20 lb. (9 kg)
Height: birth up to 27 in. (69 cm)

Important:

Product Registration

Please fill in the information below. The model number and the date of manufacture are located on a label on the glider base. Fill out the prepaid registration postcard attached to the product and mail it today. To register your product online, please visit: joiebaby.com/us/register-your-product

Model Name: _____

Model Number: _____

Date of Manufacture: _____

Date of Purchase: _____

register your
product online



Limited Warranty

We have purposely designed our high-quality products so that they can grow with both your child and your family. Because we stand by our product, our gear is covered by a custom limited warranty per product, starting from the day it was purchased. Please have the proof of purchase, model number, and date of manufacture available when you contact us. For warranty information please visit: www.joiebaby.com/us

Contact:

Joie Baby USA Consumer Service Contact Info.

Address: 70 Thousand Oaks Blvd., Morgantown, PA 19543

Email: info.us@joiebaby.com

Phone: 1-866-798-7866

⚠️ WARNING

Failure to follow these warnings and instructions could result in serious injury or death.

FALL AND STRANGULATION HAZARDS:

- **Infants have suffered** head injuries falling from gliders and rockers and have strangled in straps.
- **ALWAYS** use restraints. Adjust to fit snugly.
- **Stay near and watch baby during use.** This product is not safe for sleep or unsupervised use. If baby falls asleep, remove baby as soon as possible and place baby on a firm, flat sleep surface such as a crib or bassinet.
- **When using as an infant glider, DO NOT** move or lift the base with child in the rocker.
- **When using as an infant glider, DO NOT** use this product once your child reaches 25 lb. (11.5 kg), 30 in. (76 cm) tall, or when they attempt to climb out (approx. 9 months), whichever comes first.

⚠️ WARNING

Failure to follow these warnings and instructions could result in serious injury or death.

- **When using as a rocker,** stop using the product when child begins trying to sit up, reaches 20 lb. (9 kg), or reaches 27 in. (69 cm), whichever comes first.
- **NEVER** leave child unattended. **ALWAYS** keep child in view.
- **Fall Hazard:** Children have suffered head injuries falling from gliders and rockers. Child's activity can move product. **NEVER** place product on counter tops, tables, or any other elevated surface. **ALWAYS** place product on floor.
- **Suffocation Hazard:** Babies have suffocated when seats tipped over on soft surfaces. Rocker can roll over on soft surfaces and suffocate child. **NEVER** place rocker on beds, sofas, cushions, or other soft surfaces.
- **Fall Hazard:** Rocker can fall from a shopping cart. **DO NOT** use on shopping cart.



WARNING

Failure to follow these warnings and instructions could result in serious injury or death.

- **Children have STRANGLED** in loose or partially buckled harness straps. Fully restrain the child at all times.
- **NEVER** use this rocker as a means to transport an infant in a motor vehicle.
- **DO NOT** use the product if any parts are broken, torn, or missing.
- **DO NOT** use accessories or replacement parts other than those approved by the manufacturer.
- **To avoid suffocation**, remove plastic bags and packaging materials before using this product. The plastic bags and packaging materials should be kept away from babies and children.

WARNING

Failure to follow these warnings and instructions could result in serious injury or death.

- **Suffocation Hazard:** Young infants have limited head and neck control. If the seat is too upright, infant's head can drop forward and compress the airway.
- **ALWAYS** keep swing seat fully reclined until infant is at least 4 months old **AND** can hold up head without help.
- **Ensure** that the product is fully assembled before use.
- **DO NOT** let children play with this product.
- **Be aware of the risk** of open fire and other sources of strong heat such as electric bar fires, gas fires, etc. near the product.
- **To avoid strangulation, DO NOT** place items with a string around your child's neck, suspend strings from this product, or attach strings to toys.

CAUTION

To prevent battery leaks, which can burn the skin and eyes:

- **Keep the batteries** out of children's reach.
- **Remove batteries** when storing product for a long time.
- **ALWAYS replace** the entire set of batteries at one time.
- **Dispose** of used batteries immediately.
- **Remove and discard** exhausted or leaky batteries immediately. Please safely dispose of batteries according to your state and local regulations.
- **Change batteries** when product operates poorly.
- **NEVER mix old and new batteries** or batteries of different brands or types.
- **Batteries are to be inserted** with the correct polarity.

CAUTION

To prevent battery leaks, which can burn the skin and eyes:

- **Non-rechargeable batteries** are not to be recharged.
- **Rechargeable batteries** are to be removed from the product before being charged.
- **Rechargeable batteries** are only to be charged under adult supervision.
- **AC adapter** is to be regularly examined for damage to the cord, plug, enclosure, and other parts. In the event of such damage, it **MUST NOT** be used.
- **The product must only be used** with the AC adapter included. **DO NOT** use with an extension cord.
- **DO NOT** short-circuit the supply terminals or battery terminals.

CAUTION

Changes or modifications to this unit not expressly approved by the party responsible for compliance could void the user authority to operate the equipment.

This device complies with part 15 of the FCC Rules. Operation is subject to the following two conditions: (1) This device may not cause harmful interference, and (2) this device must accept any interference received, including interference that may cause undesired operation.

NOTE: This equipment has been tested and found to comply with the limits for a Class B digital device, pursuant to Part 15 of the FCC Rules. These limits are designed to provide reasonable protection against harmful interference in a residential installation. This equipment generates, uses, and can radiate radio frequency energy and, if not installed and used in accordance with the instructions, may cause harmful interference to radio communications.

CAUTION

However, there is no guarantee that interference will not occur in a particular installation. If this equipment does cause harmful interference to radio or television reception, which can be determined by turning the equipment off and on, the user is encouraged to try to correct the interference by one or more of the following measures:

- Reorient or relocate the receiving antenna.
- Increase the separation between the equipment and receiver.
- Connect the equipment into an outlet on a circuit different from that to which the receiver is needed.
- Consult the dealer or an experienced radio/TV technician for help.

This Class B digital apparatus meets all requirements of the Canadian Interference-Causing Equipment Regulations.
CAN ICES- 3 (B) /NMB-3 (B).

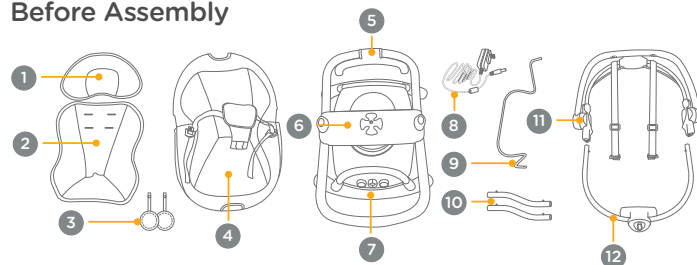
Parts List:

Please make sure there are no missing parts. Please contact Joie Consumer Service if anything is missing.

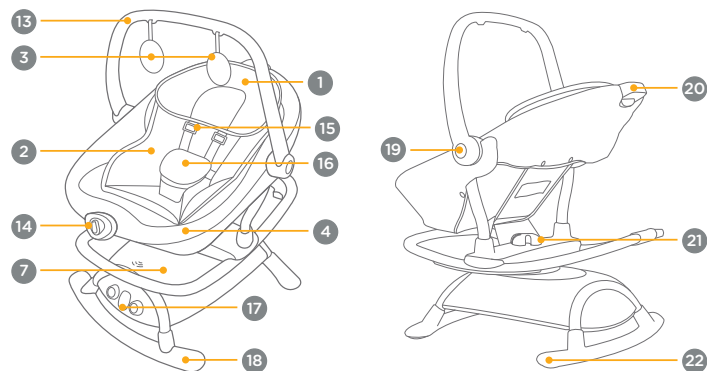
- 1 Head Support
- 2 Infant Insert
- 3 Toys
- 4 Seat Pad
- 5 Rock-Stop Foot
- 6 Rocker Base
- 7 Glider Base
- 8 AC Adapter
- 9 Support Bar
- 10 Rocker Legs
- 11 Upper Frame
- 12 Lower Frame
- 13 Handle
- 14 Vibration Module
- 15 Shoulder Harness Straps
- 16 Crotch Buckle Cover
- 17 Control Panel
- 18 Front Support Leg
- 19 Handle Adjustment Button
- 20 Recline Adjustment Button
- 21 Glider Mount
- 22 Rear Support Leg

Parts List:

Before Assembly



After Assembly



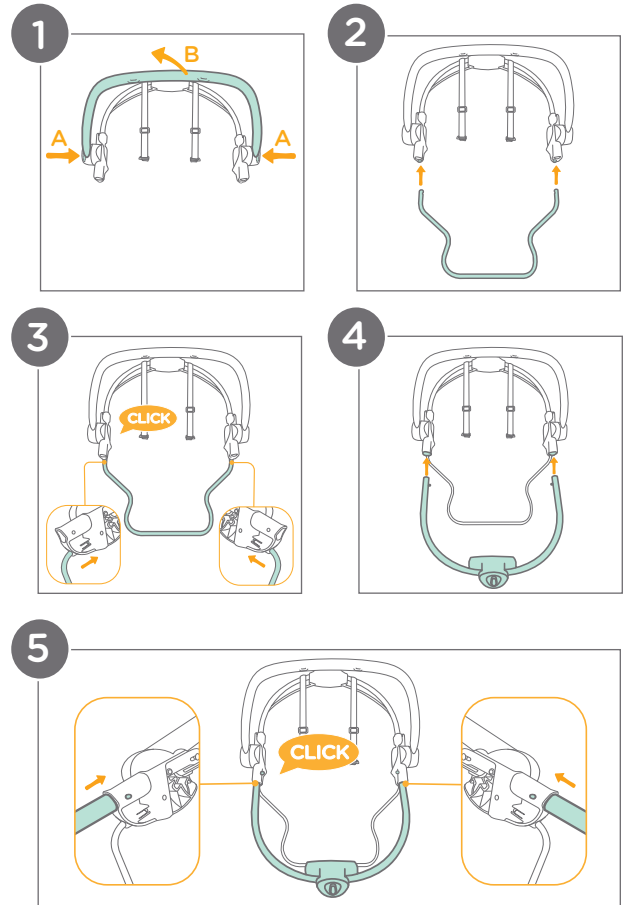
Assembling Glider & Rocker:

Before Any Assembly:

- 1 - On the upper frame, find the handle adjustment buttons at base of handle (A). While pushing both buttons in, rotate handle into fully upright position (B).

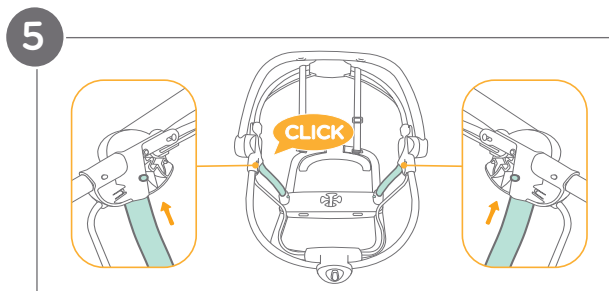
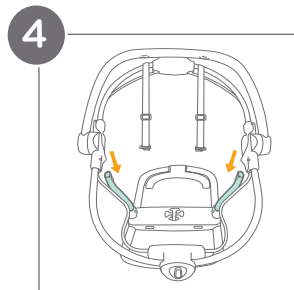
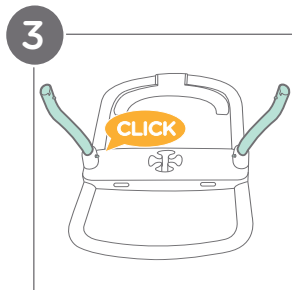
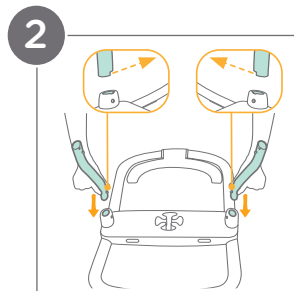
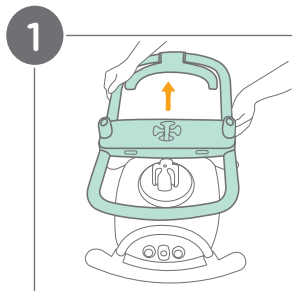
Assembling the Frame:

- 2 - Insert support bar into smaller, lower holes of the upper frame.
- 3 - A “clicking” sound will confirm that the support bar is properly locked in place.
- 4 - Insert lower frame into larger, upper holes of the upper frame.
- 5 - A “clicking” sound will confirm that the lower frame is properly locked in place.



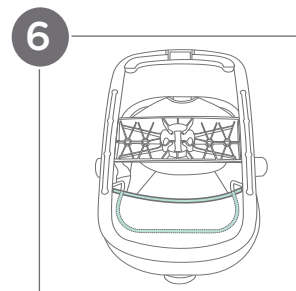
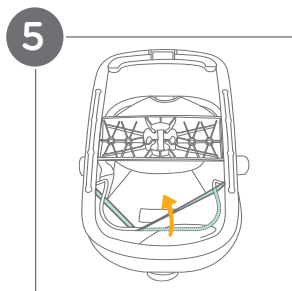
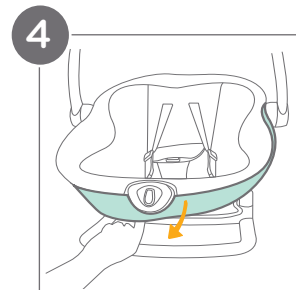
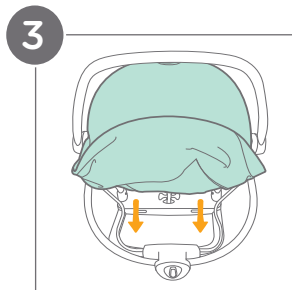
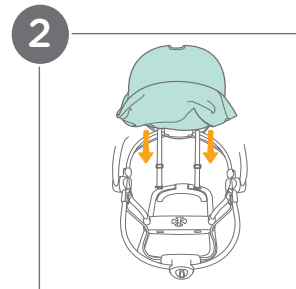
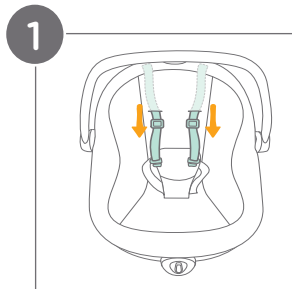
Assembling the Rocker:

- 1 - Remove rocker base from glider base.
- 2 - Insert rocker legs into rocker base. Ensure that notches on legs align with notches on base.
- 3 - A “clicking” sound will confirm that the rocker legs are properly locked in place.
- 4 - Insert the previously assembled upper and lower frames into the rocker legs.
- 5 - A “clicking” sound will confirm that the frame is properly locked in place.



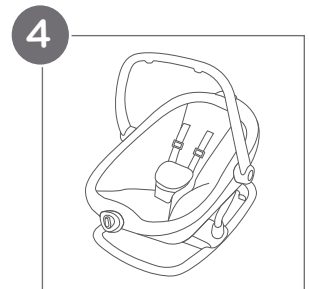
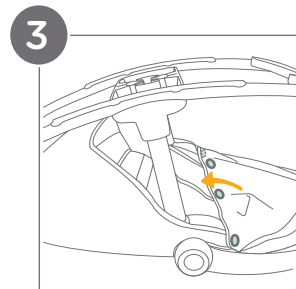
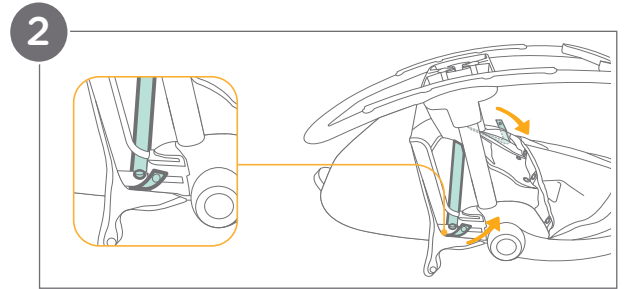
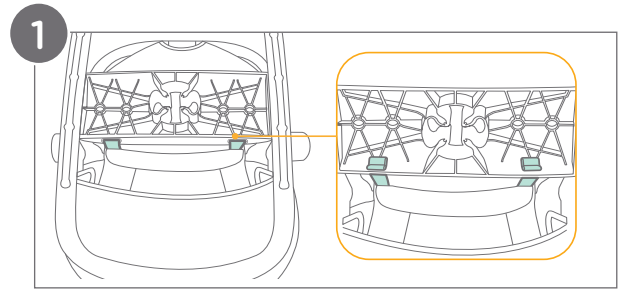
Attaching the Seat Pad:

- 1 - Take the seat pad and thread the shoulder harness straps through the shoulder harness slots.
- 2 - Wrap the top of the seat pad around the top of the upper frame.
- 3 - Starting at the vibration module, wrap the bottom of the seat pad around the bottom of the lower frame.
- 4 - Pull down on bottom of seat pad to fully wrap it around the lower frame.
- 5 - Flip rocker base over and secure bottom of seat pad over support bar.
- 6 - Ensure the seat pad is fully extended over the support bar.



Securing the Seat Pad:

- 1 - To attach the lower straps:** Flip the rocker base upside down. Locate the two lower straps without snaps hanging from the underside of the seat pad. Thread the straps all the way through the slots on the rocker base. Pull on the straps to ensure they are securely attached to the rocker base.
- 2 - To attach the side straps:** Still on the underside of the rocker base, find the two longer straps with snaps. On the frame of the rocker (round metal tube), find the spots where these snaps should connect. To attach the snaps, first wrap the strap over the frame, then attach it to the matching snap on the outside of the frame.
- 3 - To attach the back snaps:** Find the snaps located on the back edge of the seat pad and the matching snaps on the back of the rocker. Attach the back snaps on the seat pad to the corresponding snaps on the frame.
- 4 - The rocker is now fully assembled and ready to be used or attached to glider base (see pg. 32).**



Using Buckle:

1 - Release Buckle:

Locate the button in the center of the buckle and press it firmly to release the harness straps.

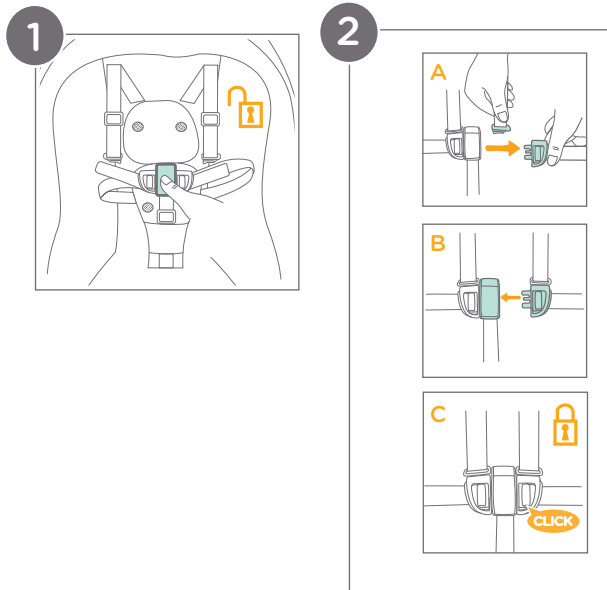
2 - Lock Buckle:

Slide the shoulder harness buckle into the lap belt buckle (A). Insert the combined buckles together into the center buckle (B). A “clicking” sound will confirm that the buckle is properly locked in place (C).

IMPORTANT: To avoid serious injury from falling or sliding out, **ALWAYS** secure your child with the harness.

Make sure your child is snugly secured. The space between the child and the shoulder harness straps should be about a 1/2 inch.

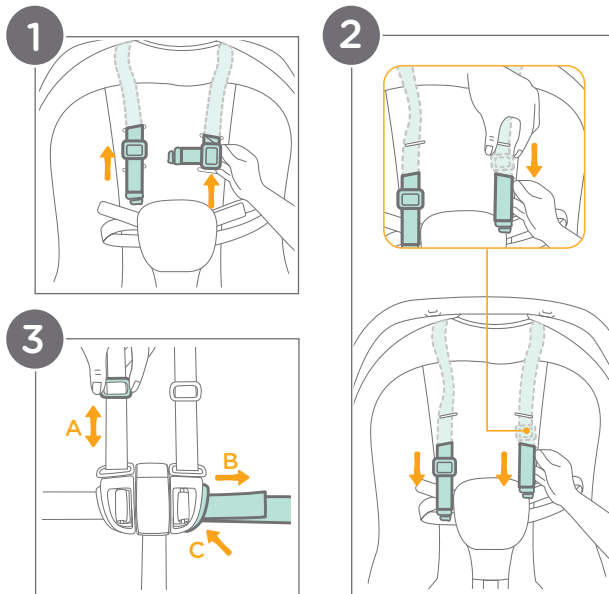
DO NOT cross the shoulder straps. This will cause pressure on the child’s neck.



Using Waist & Shoulder Harness Straps:

IMPORTANT: In order to protect your child from falling out, after your child is placed into the seat, check whether the shoulder and waist harness straps are at the proper height and length.

- 1 - To adjust the position of the shoulder harness strap, turn the slide adjuster to be level with the harness slot. Thread it through the shoulder harness slot from front to back.
- 2 - Re-thread it through the slot that is closest to child's shoulder height.
- 3 - Use the slide adjuster (A) to adjust the length of the shoulder harness straps. Pull the waist harness strap (B) to tighten the waist harness. Press the button (C) on the slide adjuster and pull to loosen the waist harness strap (B).



Adjusting Recline:

Recline can be adjusted to 3 positions.

- 1 - Squeeze recline adjustment button on the back of seat and push down or pull up to adjust the seat back to the desired recline position.

2 - IMPORTANT: Ensure that the seat is locked into one of the 3 recline positions.

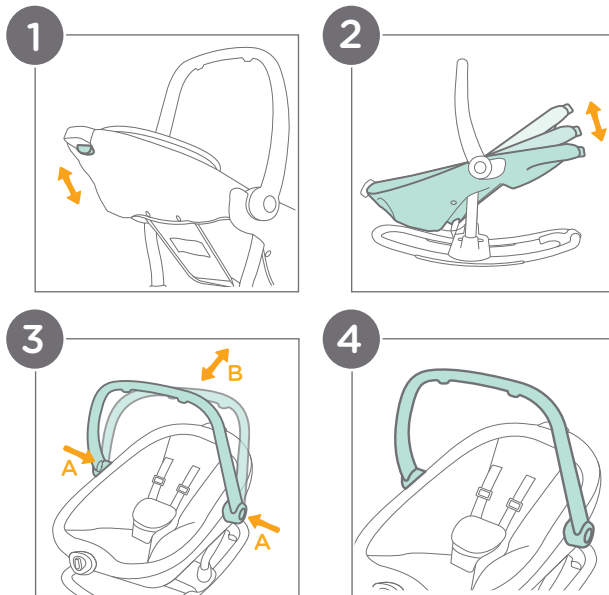
Adjusting Handle:

Handle can be adjusted to 2 positions.

- 3 - To adjust the handle, press the left and right handle adjustment buttons (A) at the same time and rotate the handle (B) to the desired position.

4 - WARNING!: Handle must be in the fully upright position when lifting rocker with child.

Tip Rotate handle back past the second position when placing child in seat.



Using Rock-Stop Foot:

- 1 - Locate rock-stop foot on back of rocker base. Rotate it fully down. This will keep the rocker steady.

To allow rocking, rotate rock-stop foot upward fully.

Using Vibration:

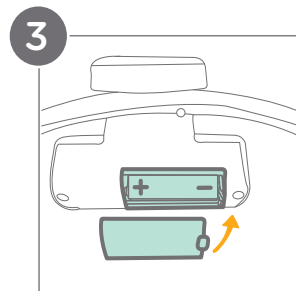
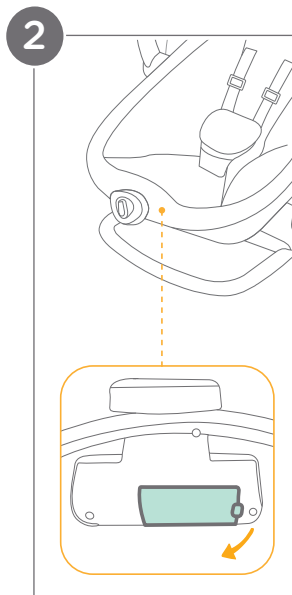
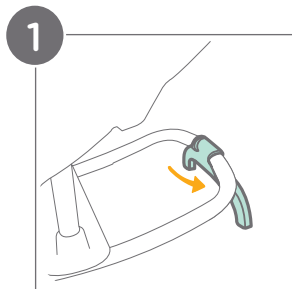
- 2 - Battery compartment is located behind the vibration module, under the seat pad. Remove battery cover using a flat-head screwdriver.
- 3 - Insert one “D” alkaline, disposable, 1.5V battery. Battery is not included. Replace battery cover.

Vibration Icons:

 Low Vibration Speed

 Vibration Off

 High Vibration Speed










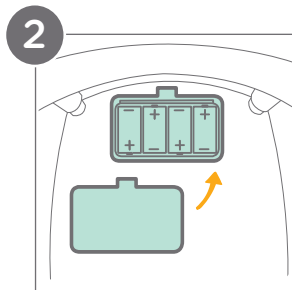
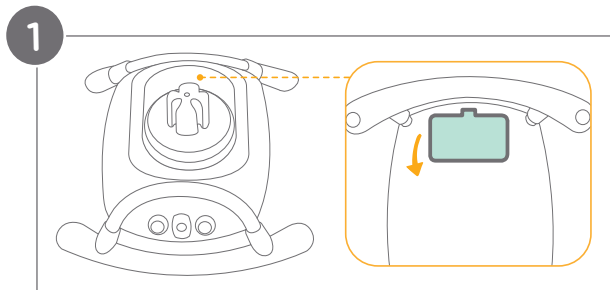
Using Control Panel:

Inserting Batteries:

- 1 - Battery compartment is located on the underside of the glider base. Remove battery cover using a flat-head screwdriver.
- 2 - Insert four “D” alkaline, disposable, 1.5V batteries. **NEVER** mix battery types. Batteries are not included. Replace battery cover.

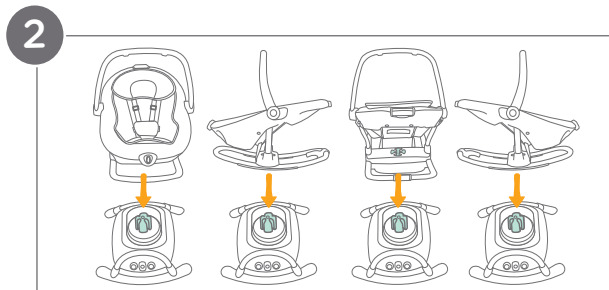
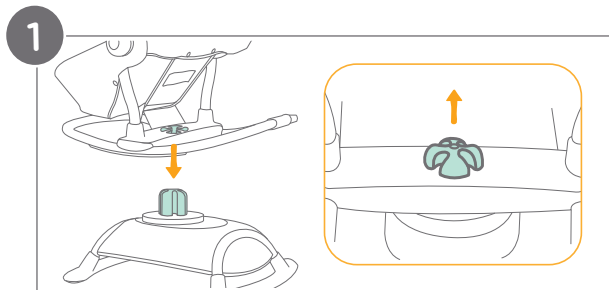
Control Panel Icons:

-  Main Power OFF/ON
-  Glider Speed UP/DOWN
-  Gliding Motion
-  Nature Sounds
-  Music
-  Rotation Motion
-  Speaker



Attaching Rocker:

- 1 - Place rocker onto glider mount.
- 2 - Rocker can be placed and used in 4 different positions as a glider.



Using AC Adapter:

- 1 - Find AC adapter jack on rear of glider base. Plug in small end of AC adapter cord.
- 2 - Plug the other end into your home's wall outlet.

IMPORTANT: Product does not recharge batteries.

When AC adapter is in use, batteries will automatically shut off.

DO NOT place the product near water or moisture. **DO NOT** use the product near possible wet areas, such as a bathtub, shower, washing machine, sink, swimming pool, wet basement, etc.

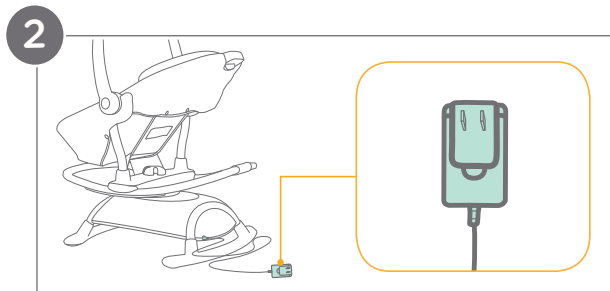
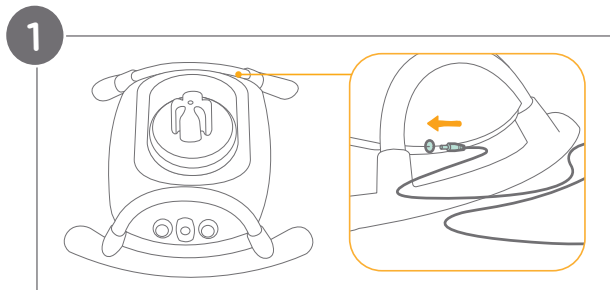
DO NOT use the AC adapter if it has been exposed to liquids, has been dropped, or is damaged.

Protect the AC adapter power cord. Place it so it is not walked on or pinched by furniture or other items.

Keep the AC adapter power cord out of reach of children.

DO NOT use AC adapter power cord with an extension cord.

Use **ONLY** the AC adapter power cord provided.

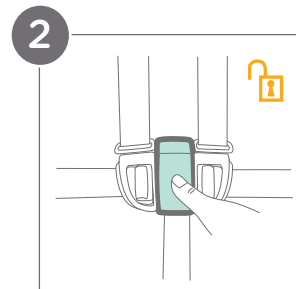
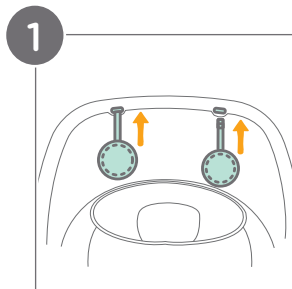


Using Toys:

- 1 - To attach toys, thread the toy straps through the slots at the top of the handle.

Using Infant Insert:

- 2 - To release the buckle, locate the button in the center of the buckle and press it firmly to release the harness straps.
- 3 - To attach infant insert, thread shoulder harness straps, waist harness straps, and crotch buckle cover through the corresponding openings.

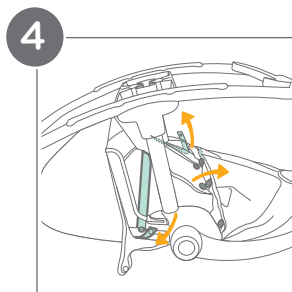
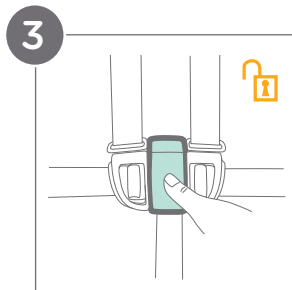
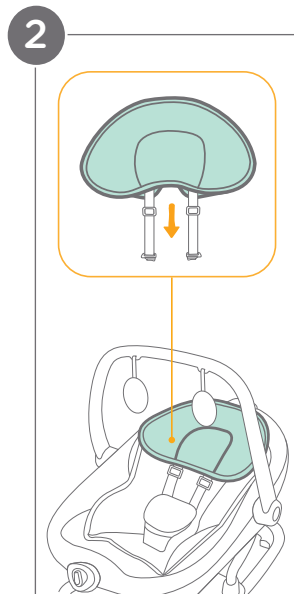
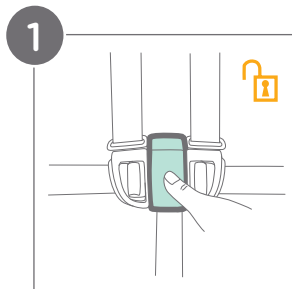


Using Head Support:

- 1 - To release buckle, locate the button in the center of the buckle and press it firmly to release the harness straps.
- 2 - To attach head support, thread the shoulder harness straps through the loops on the back.

Removing Softgoods:

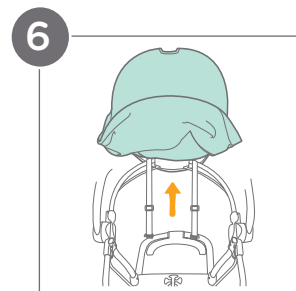
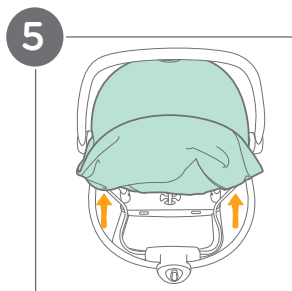
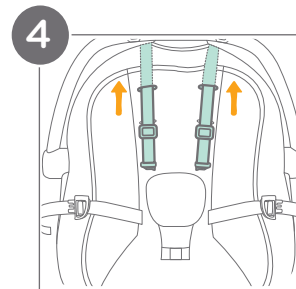
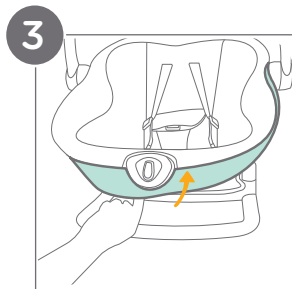
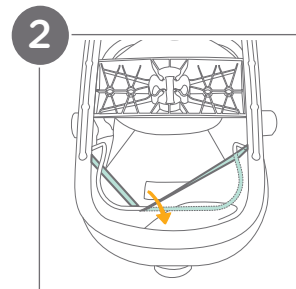
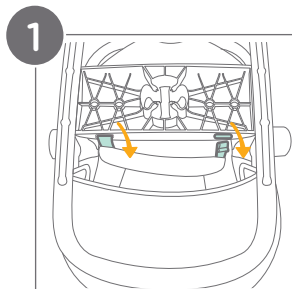
- 3 - To release the buckle, locate the button in the center of the buckle and press it firmly to release the harness straps.
If attached, remove head support and infant insert.
- 4 - On the back of the rocker, undo seat pad snaps from both the upper frame and the lower frame.



Removing the Seat Pad:

- 1 - Thread lower straps back through their slots in rocker base.
- 2 - Unhook seat pad from support bar.
- 3 - Flip seat over. First, remove seat pad from around vibration module. Then, tug back of seat pad to slowly release it from the lower frame.
- 4 - Thread shoulder harness straps back through their slots.
- 5 - Unwrap the bottom of the seat pad from around the lower frame.
- 6 - Unwrap and pull up the top of the seat pad from around the upper frame.

To reattach the softgoods, repeat the above steps in reverse order (See pg. 18-19 for more detail).



Care & Maintenance:

Cleaning:

To wash seat pad, infant insert, and head support, refer to care tags on product. **DO NOT** tumble dry.

The product can be spot cleaned with a sponge and soapy water.

DO NOT use undiluted detergent, alcohol, or other solvent to wash the product. It may cause damage to the product.

DO NOT use bleach.

Maintenance:

Worn parts: Replace any worn or damaged parts. Use only Joie replacement parts.

Torn material or stitching: Repair or replace torn fabric or stitching. Use only Joie replacement fabrics.

Contact Joie Consumer Service at:

Email: info.us@joiebaby.com • Phone: 1-866-798-7866

Storage:

If the product is not in use for a long period of time, store it where your child cannot access it.

Remove batteries before putting product into storage for a prolonged period of time.

Joie™

Effortlessly happy.

Helping parents be their best
with worry-free baby gear.