



Instruction Manual

mint latch™

Built-in LATCH infant seat

Child height less than 30 inches (76 cm)

Child weight 4 to 30 lb (1.8 to 13.6 kg)



installation
videos



Read all the instructions in this manual
before using the child restraint.

Contents:

3 Important

Welcome to the Family!
If you Need Help
Register Your Child Restraint

5 Child Requirements

6 Warnings

14 Best Practices

15 Vehicle Compatibility

16 Vehicle Belts

18 Choose your Installation

22 Parts List

24 Canopy

24 Handle Adjustment

26 Head Support

28 Infant Insert

30 Adjusting Harness Height

34 Securing Child in Seat

38 Install Using LATCH

40 To Remove LATCH

42 Install Using Lap/Shoulder Belt

44 Install Using Lap Belt ONLY

46 Install in an Aircraft

46 Accessories

48 Removing Canopy/Fabric

52 Care and Maintenance

Important:

Welcome to the Joie Family!

Ensure your child's safety – **READ THIS MANUAL CAREFULLY!**

Although no child restraint can promise to protect in every situation, using it correctly reduces the chance of serious injury. Even if the child restraint seems easy, follow the step-by-step instructions in this book.

Store this instruction manual in the pocket located within the seat pad.

If You Need Help

If you have questions in the U.S.A, about parts, use, or maintaining your child restraint, contact our Customer Service Department for assistance. To ensure a speedy response, please have your child restraint's model number and date of manufacture ready. You can find the information on a sticker located on the underside of the child restraint.

Joie Baby USA Consumer Service Contact Info

Address: 70 Thousand Oaks Blvd Morgantown, PA 19543

Email: info.us@joiebaby.com

Phone: 1-866-798-7866

Important:

Register this Child Restraint

Child restraints could be recalled for safety reasons. You must register this restraint to be reached in a recall. Send your name, address, e-mail address if available and the restraint's model number and manufacturing date to **70 Thousand Oaks Blvd Morgantown, PA 19543** or call **1-866-798-7866** or register online at:

www.joiebaby.com/carseatregistration

For recall information, call the U.S. Government's Vehicle Safety Hotline at **1-888-327-4236 (TTY: 1-800-424-9153)** or go to <http://www.NHTSA.gov>.

For future reference, record the following information about your child restraint in case you move, lose your registration card, or need to reference it for any reason. You can find this information on the registration card or on the label located on the back of the child restraint:

Model Name:

Model Number:

Date of Manufacture:

Date of Purchase:

Child Requirements:

This child restraint is for a child that meets **BOTH** of the following requirements:

Weight: 4 to 30 lb (1.8 to 13.6 kg)

Height: less than 30 inches (76 cm)

STOP using this child restraint as soon as the child reaches the max. weight OR the max. height.

NEVER use this child restraint forward-facing.

According to accident statistics, children are safer when properly restrained in the rear seating positions than in the front seating positions. **Children should ride rear-facing as long as possible, until at least 2 years old.**

Preterm or Low Birth Weight Infants

To ensure the safety of your preterm or low birth weight infant (born before 37 weeks or weighing less than 5 lb (2.3 kg), Joie recommends following the AAP's guidelines and consulting your doctor or hospital staff before the child's first car or airplane trip. A medical evaluation is crucial to check for breathing and heart rate concerns when traveling in a rear facing child restraint.

For additional information or to have your child restraint inspected by a certified professional, you can visit the Safe Kids Worldwide website at www.safekids.org

WARNING!

DEATH OR SERIOUS INJURY can occur if you fail to follow the warnings, instructions and labels on the child restraint.

- Read **ALL INSTRUCTIONS** before use of the infant carrier.
- Read the vehicle owner's manual for information on child restraint installation.
- **KEEP INSTRUCTIONS FOR FUTURE USE.**
- Failure to follow these instructions and child restraint's labels can result in child striking the vehicle's interior during a sudden stop or crash.
- **DO NOT** allow anyone who has not read the instruction manual to install or use this child restraint.
- **DO NOT** place rear-facing child seat on front seat with air bag. **DEATH OR SERIOUS INJURY CAN OCCUR.** The back seat is the safest place for children 12 and under.



WARNING!

DEATH OR SERIOUS INJURY can occur if you fail to follow the warnings, instructions and labels on the child restraint.

- If an air bag inflates, it can hit the child and car seat with great force and cause serious injury or death to your child. Review your vehicle owner's manual for more information about air bags and car seat use.
- Do not use the child restraint if it is damaged or broken or if parts are missing.
- **NEVER use a child restraint that has been involved in a MODERATE or SEVERE crash.**
- Use only with a child that weighs between 4-30 lb (1.8-13.6 kg) and height is less than 30 inches (76 cm).
- Stop using this child restraint as soon as the child reaches the max. weight OR the max. height.

WARNING!

DEATH OR SERIOUS INJURY can occur if you fail to follow the warnings, instructions and labels on the child restraint.

- **NEVER** secure this car restraint using an inflatable seat belt. Move to a vehicle seat that does not have an inflatable seat belt, or install using LATCH.
- A child's safety is your responsibility. **NEVER** leave child unattended.
- Before each use, always check the car restraint to make sure it is tightly secured to the vehicle seat.
- According to accident statistics, children are safer when properly restrained in the rear seating positions than in the front seating positions.
- If your vehicle does not have a back seat, review your vehicle owner's manual.
- Vehicle seat belt system **MUST** hold child restraint securely. Not all vehicle seat belts can be used with a child restraint.

WARNING!

DEATH OR SERIOUS INJURY can occur if you fail to follow the warnings, instructions and labels on the child restraint.

- Select a suitable location for the child restraint in your vehicle. Secure child restraint with a vehicle seat belt or lower anchor attachment that is properly routed as shown in this manual.
- **NEVER** attach two lower anchor connectors to one vehicle lower anchor point unless specifically allowed by the vehicle manufacturer.
- Rear-facing child restraint must be properly leveled. An improperly reclined child restraint can result in breathing difficulties, injury or ejection.
- **DO NOT** remove LATCH system from child restraint. If using vehicle seat belt to secure child restraint, lower anchor connectors must be properly stored.
- **DO NOT** allow child restraint to contact the vehicle interior (side of car door or seat in front).

WARNING!

DEATH OR SERIOUS INJURY can occur if you fail to follow the warnings, instructions and labels on the child restraint.

- **STRANGULATION HAZARD** Children have **STRANGLER** in loose or partially buckled harness straps. Fully restrain the child even when carrier is used outside the vehicle.
- **SUFFOCATION HAZARD** Infant carrier can roll over on soft surfaces and suffocate child. Never place carrier on beds, sofas, or other soft surfaces.
- **FALL HAZARD** Child's activity can move child restraint. **NEVER** place carrier on counter tops, tables, or any other elevated surface. Always stay within arm's reach whenever carrier is not on floor/ground.
- **FALL HAZARD** The carrier can fall from the shopping cart. **DO NOT** use on shopping cart.



WARNING!

DEATH OR SERIOUS INJURY can occur if you fail to follow the warnings, instructions and labels on the child restraint.

- Be sure handle locks into the carrying position before lifting carrier.
- **DO NOT** use child restraint if it has frayed or cut harness straps, or is damaged in any way. To find out if damaged parts are replaceable, call 1-866-798-7866.
- **NEVER** modify any part of the child restraint.
- **DO NOT** attach additional padding, toys, or other devices unless made by Joie and described in these instructions. Use only approved accessories. Unapproved items can injure your child and may void the warranty.
- **NEVER** leave child restraint unsecured in your vehicle even when it is unoccupied. In a crash, it could become a projectile and injure other vehicle occupants.

WARNING!

DEATH OR SERIOUS INJURY can occur if you fail to follow the warnings, instructions and labels on the child restraint.

- NEVER use clothing or blankets that interfere with providing a properly tightened harness. An unsecured or improperly harnessed child can come out of the restraint during a crash.
- Place blankets over child **AFTER** harness has been properly tightened.
- Only use with Joie strollers or appropriate Joie adapters designed for use with other strollers.

This child restraint system conforms to all applicable Federal motor vehicle safety standards.

WARNING!

NEVER use a child restraint that has been involved in a **MODERATE** or **SEVERE** crash.

Even if there is no visible damage, the child restraint's internal structure may be compromised, and may not protect your child in a future crash.

Child restraint is still usable after a minor incident in which ALL of the following apply:

- 1) The vehicle was able to be driven away from the crash site.
- 2) The vehicle door nearest the car restraint was NOT damaged.
- 3) None of the passengers in the vehicle sustained any injuries in the crash.
- 4) If the vehicle has air bags, the air bags did not deploy during the crash; and
- 5) There is no visible damage to the car restraint.

Contact Joie with any questions or concerns.

Best Practices:

Expiration:

This child restraint expires 7 years from the date of manufacture. Stop using it after that date and dispose of it. Check the label on the back of the seat for the manufacture date.

Hot Weather Warning:

Child restraints can become extremely hot in the sun or warm weather. Always check the seat temperature before placing your child inside to avoid burns.

Clothing:

For proper harness fit and child safety, avoid bulky clothing like heavy jackets or snowsuits when using the child restraint. Ensure the harness is snug but comfortable on your child.

Vehicle Compatibility:

You MUST read and understand ALL child restraint related instructions and warnings in your vehicle owner's manual to correctly and safely use this child restraint in your vehicle.



This child restraint can **ONLY** be installed on vehicle seats that face forward. **DO NOT** install in seats that face to the sides or rear of the vehicle.



DO NOT place rear-facing child seat on front seat with air bag. **DEATH OR SERIOUS INJURY CAN OCCUR.** The back seat is the safest place for children 12 and under.



NEVER attach two lower anchor connectors to one vehicle lower anchor point unless specifically allowed by the vehicle manufacturer.

DO NOT use both the vehicle seat belt and lower anchor attachment at the same time.

If your vehicle is equipped with front passenger side air bags, check your vehicle owner's manual for child restraint installation instructions.

Vehicle Belts:

These vehicle belts **CANNOT BE USED** with your child restraint. Install with lower anchors instead.

1-Motorized Belts (Automatic)

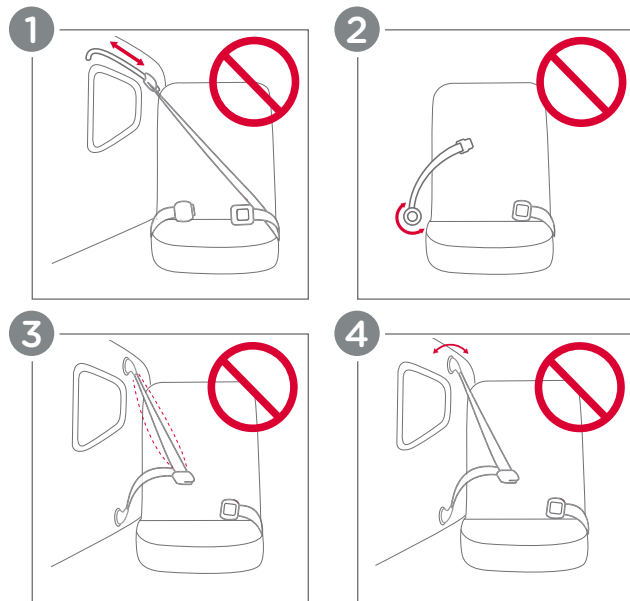
These should not be used unless the shoulder belt can be removed, the lap belt is locked and use is allowed by the vehicle manufacturer.

2-Non-Locking (ELR) Lap Belts

This belt only locks in a crash or sudden stop and should only be used with a belt shortening clip.

3-Airbag/Inflatable Belts

4-Door Mounted Belts



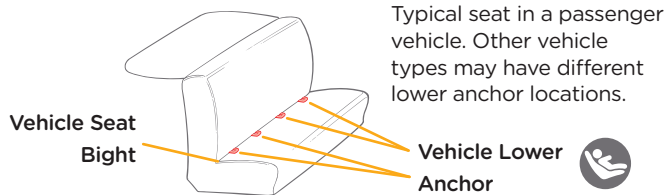
Choose your Installation:

This child restraint can be installed in your vehicle using either the vehicle seat belt OR the lower anchor attachment (LATCH). Both are equally safe to use. **INSTALL USING ONLY ONE METHOD.**

LATCH Install:

LATCH (Lower Anchor Attachment) with Tether:

The LATCH system or lower anchor attachment and top tether allow you to securely attach your safety seat in your car without using the vehicle seat belt. All 2003 and newer model year vehicles are required to have a LATCH system, although some manufacturers began including LATCH earlier. Some vehicle owner manuals use the term ISOFIX to identify the LATCH system.



Review your vehicle owner's manual for exact location and use.

Vehicle Belt Install:

Vehicle Seat Belt:

Refer to your vehicle owner's manual to determine if the belts in your vehicle lock by switching the seat belt's retractor OR have a locking latch plate that locks the vehicle's seat belt.

Vehicle Seat Belt Terms Retractor

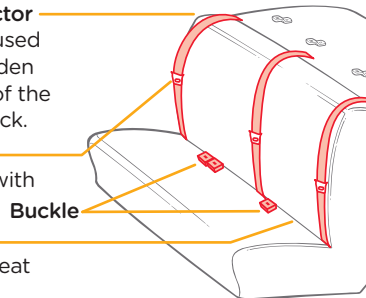
A device that winds up the unused vehicle seat belt. It is often hidden inside the panels on the walls of the vehicle or in the vehicle seatback.

Latch Plate

The male end of the seat belt with the metal tongue.

Seat Bight

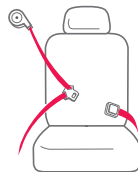
The crease where the vehicle seat back and seat bottom meet.



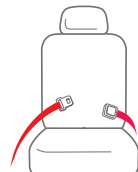
Review your vehicle owner's manual for exact location and use.

Identify Your Seat Belt Type:

The vehicle seat belt types that can be used with this child restraint.

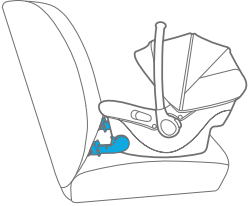
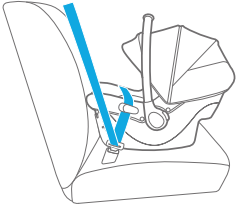
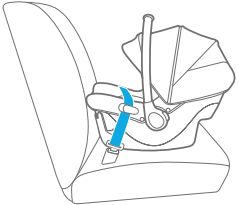


Lap/Shoulder Belt
3 connection points.



Lap Belt Only
2 connection points.

Choose Your Installation:

Installation Method	Suitable For
<p data-bbox="65 187 159 212">LATCH</p> 	<p data-bbox="427 511 703 643">Child height less than 30 inches (76 cm) Child weight 4-30 lb (1.8 - 13.6 kg)</p>
<p data-bbox="65 453 300 478">Lap/Shoulder Belt</p> 	
<p data-bbox="65 726 252 751">Lap Belt ONLY</p> 	

Page Intentionally
Left Blank

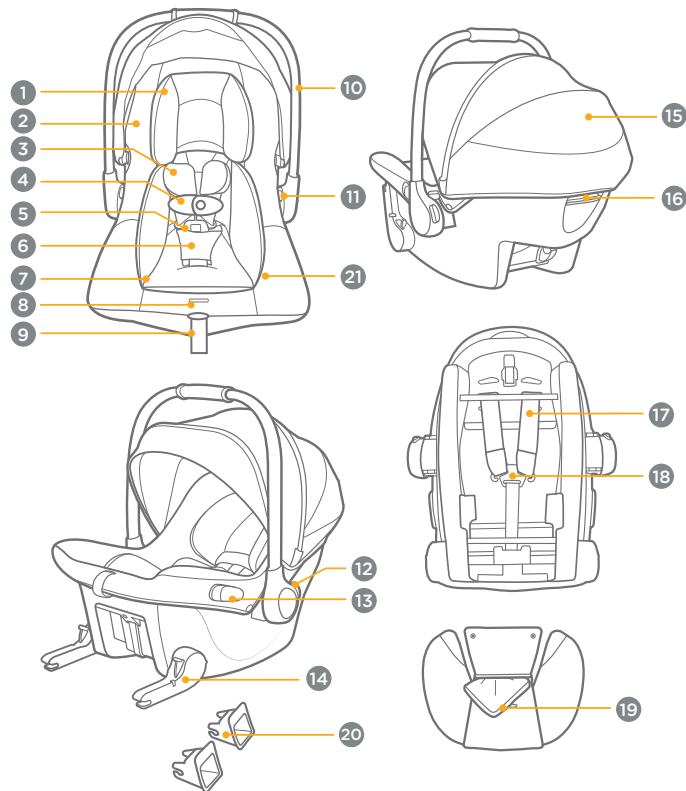
Parts List:

Please make sure there are no missing parts. Please contact Joie Customer Service if anything is missing.

- 1 Head Support
- 2 Seat Pad
- 3 Shoulder Pads
- 4 Chest Clip
- 5 Buckle
- 6 Crotch Pad
- 7 Infant Insert
- 8 Harness Adjustment Button
- 9 Harness Adjustment Strap
- 10 Handle
- 11 Stroller Adapter Release Button
- 12 Handle Adjustment Button
- 13 Lap Belt Guide
- 14 Rigid LATCH
- 15 Canopy Window
- 16 Rigid LATCH & Stroller Release
- 17 Shoulder Harness Straps
- 18 Harness Splitter Plate
- 19 Low Birth Weight Pillow (inside Infant Insert)
- 20 LATCH Guides
- 21 Manual Pocket

Store this instruction manual in the pocket located within the seat pad.

Parts List:



Canopy:

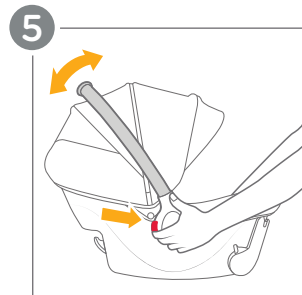
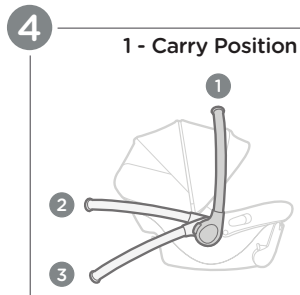
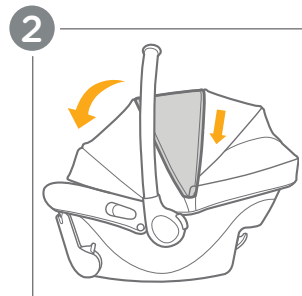
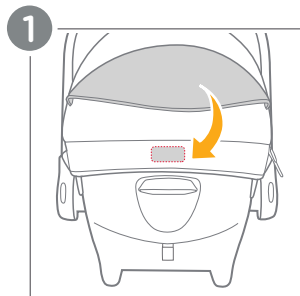
- 1 - Fix the loop and hook fasteners on canopy rear panel.
- 2 - Open the zipper on the canopy for extra shade.
- 3 - For added ventilation, flip the canopy window cover up.

Handle Adjustment:

- 4 - The handle can be adjusted to 3 positions.
- 5 - To adjust the handle position, squeeze handle buttons on both sides and rotate the handle until it clicks into a locked position.

WARNING: Make sure handle is locked in the carry position before lifting child restraint. An unlocked handle could move unexpectedly, causing injury to the child.

Joie recommends to have the handle in the carry position when in the vehicle. This allows space between front/rear seats and easier install/removal of the carrier.



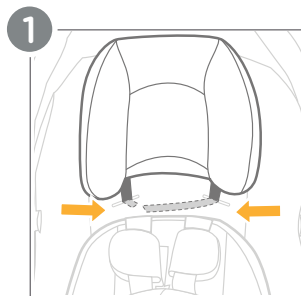
The head support can be used as necessary, to provide a snug fit for small babies.

Removing the Head Support:

The head support can be removed when your child has outgrown it.

- 1 - Locate the hook and loop fasteners behind the seat fabric. Carefully pull apart the fastener to detach the head support.
- 2 - Gently pull the head support upwards to remove it completely.

WARNING: The head support straps CAN NOT go through the same slots as the harness and should only be used in the top two harness slot positions.



The infant insert can be used as necessary, to provide a snug fit for small babies.

The low birth weight pillow located inside the infant insert can be used for even smaller babies.

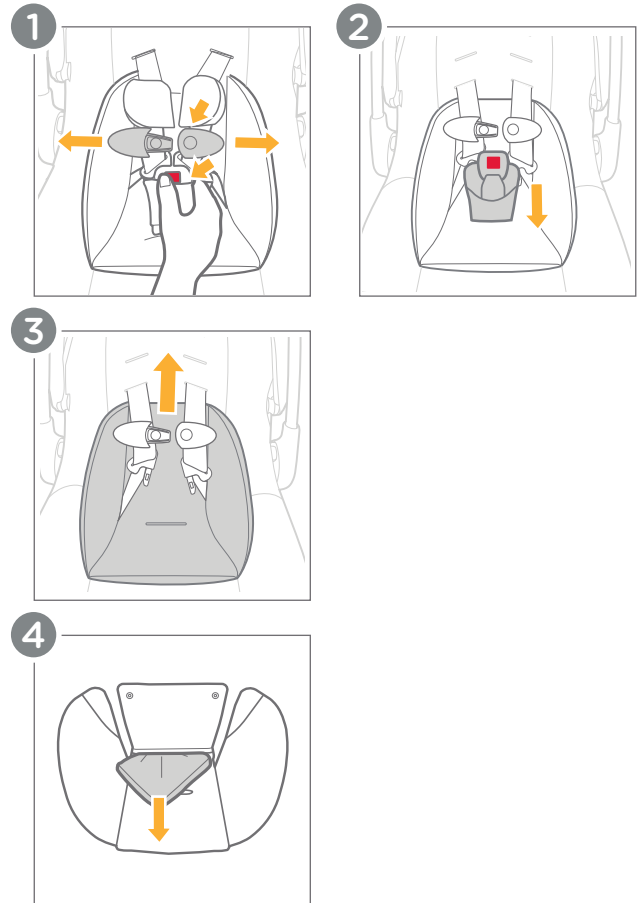
Removing the Infant Insert:

- 1 - Unbuckle the harness by pressing the release button on the buckle.
- 2 - Thread the crotch strap through the slot of the infant insert.
- 3 - Gently pull the infant insert upwards to remove it completely.

IMPORTANT: The infant insert can be used for smaller babies, but **MUST** be removed once the child reaches 11 lb (5 kg).

Removing Low Birth Weight Pillow:

- 4 - To remove the low birth weight pillow, slide it out of the pocket on the infant insert.



Check Harness Height Fit:

For safety and comfort, ensure the harness straps fit snugly on your child's shoulders and are positioned at or just below their shoulders.

1 - Have your child sit in the child restraint with the harness buckled. The shoulder straps should be at or just below the child's shoulders. If the shoulder straps are not at or just below the shoulders, adjust the harness height.

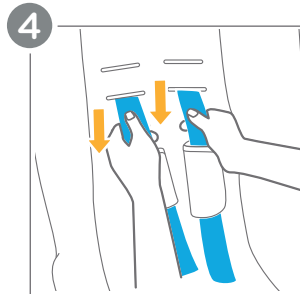
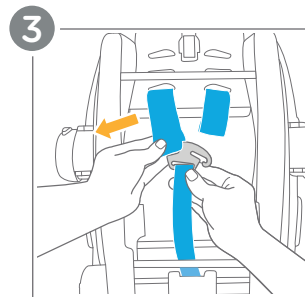
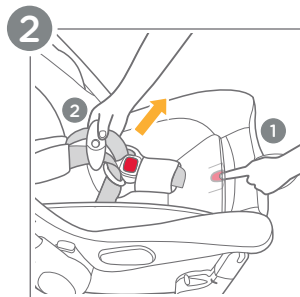
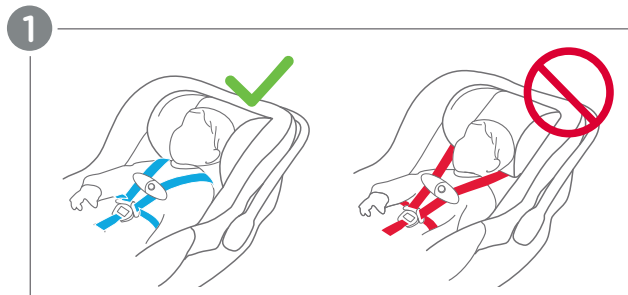
Adjusting Harness Height:

2 - Remove the child from the child restraint and loosen the harness straps by pressing the harness adjustment button (1) and pulling on the straps (2).

3 - Turn the child restraint over and locate the metal splitter plate where the shoulder straps come together. Carefully remove **BOTH** shoulder straps from the metal splitter plate.

4 - Turn the child restraint back over and pull **BOTH** shoulder straps out through the front of the child restraint.

(Adjusting Harness Height continued on PG. 32)



Adjusting Harness Height: (cont.)

5 - Re-thread the shoulder straps through the correct slots on the front of the child restraint.

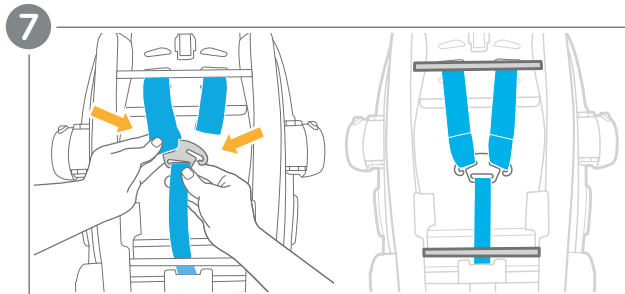
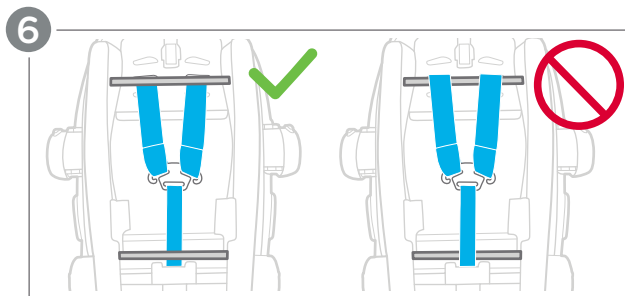
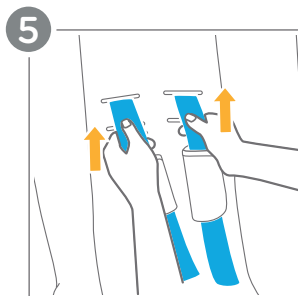
6 - Ensure the harness straps pass under the cross bars.

WARNING: Make sure shoulder straps are not twisted before attaching to the splitter plate.

7 - Once you've adjusted the shoulder straps to the desired height, re-attach BOTH shoulder strap loops into the metal splitter plate.

Check the Final Fit:

Have your child sit back in the child restraint and repeat **Step 1 - Check Harness Height Fit** to ensure the harness is snug and positioned correctly at or just below their shoulders.



Securing Child in Seat:

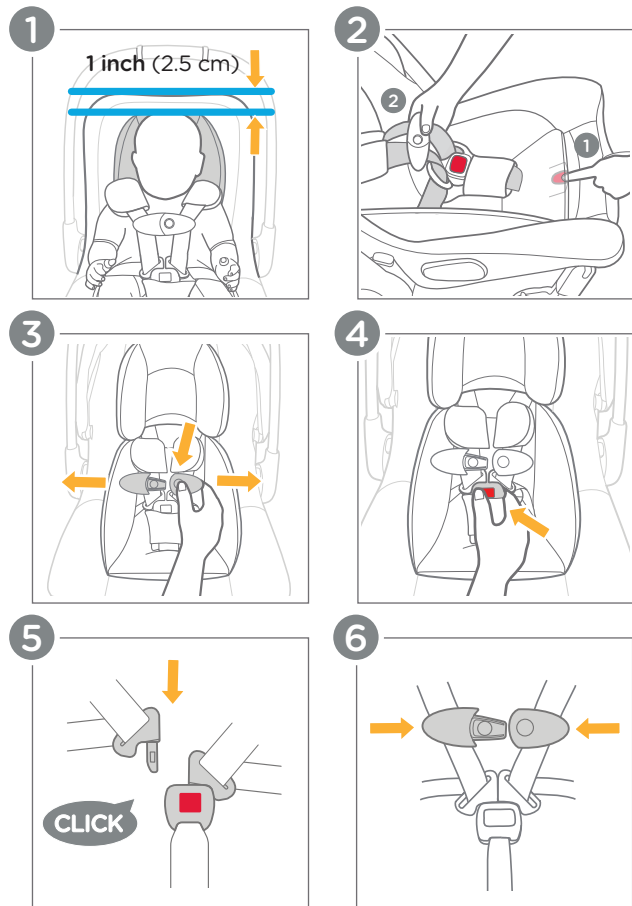
- 1 - The top of child's head must be at least 1 inch (2.5 cm) below top of child restraint.
- 2 - Loosen the harness straps by pressing the harness adjustment button (1) and pulling on the straps (2).
- 3 - Press the button to release the halves of the chest clip and separate chest clip.
- 4 - Press the button and remove the buckle tongues from the buckle and spread harness straps apart. Place your child in the child restraint.

IMPORTANT: Child must be in a seated position against both the back and bottom of the seat with no gap behind the child. Do not allow child to slouch.

Harness straps must be at or just below child's shoulders to avoid injury.

- 5 - Gently guide child's arms through the shoulder straps. Insert the buckle tongues into the buckle. Listen for click. Pull on the buckle to make sure it is properly latched.
- 6 - Snap the chest clip together and temporarily slide towards the buckle for tightening the harness straps.

(Securing Child in Seat continued on PG. 36)



Securing Child in Seat: (cont.)

7 - Pull on the adjustment strap to tighten the harness. Slide any excess strap length from the child's waist up through the buckle towards the shoulders, and repeat this step until the harness is snug on child.

TIP: The harness should be snug around your child's waist and shoulders. It may take a few adjustments, so be patient!

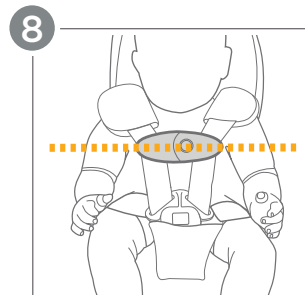
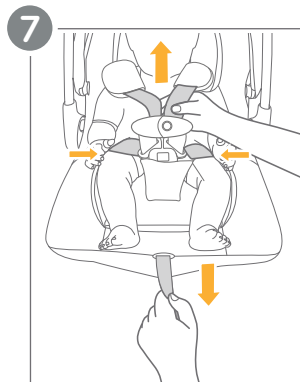
8 - Position the chest clip at child's armpit level.

Check Setup!

Harness is snug - A snug harness cannot be pinched, and should not allow any slack. If harness straps are not snugly adjusted, child may be ejected from seat in the event of a crash.

IMPORTANT: A snug strap should not allow any slack. It lies in a relatively straight line without sagging. It does not press on the child's flesh or push the child's body into an unnatural position.

- Chest clip and buckle are secured properly.**
- Chest clip is at child's armpit level.**
- Child's head is at least 1 inch (2.5 cm) below top of headrest.**
- Shoulder straps are at or just below child's shoulders.**



WARNING! Make sure that nothing interferes with the harness. Make sure harness straps are snug around child and lay flat.

Serious injury or death could occur to a child that is not secured properly. If child is not secured properly, child could be ejected in a sudden stop or crash, resulting in serious injury or death.

Install Using LATCH:

INSTALL USING ONLY ONE METHOD.

NEVER install using BOTH seat belt and LATCH.

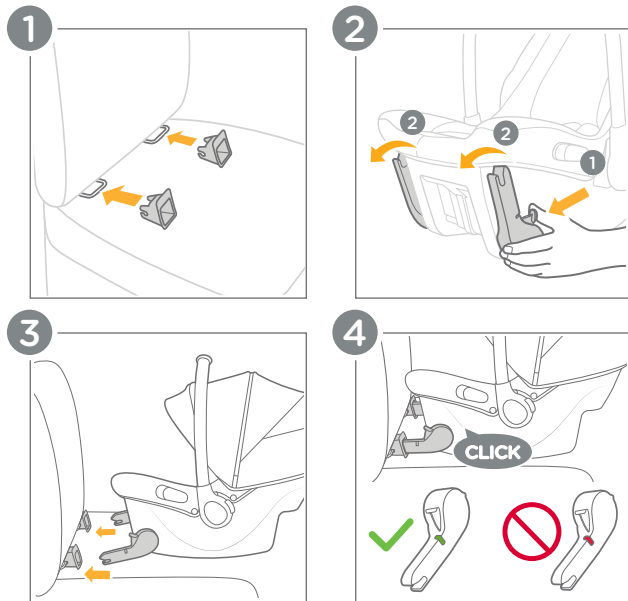
1 - Insert LATCH guides to help with installation.

2 - Press the LATCH rotate button (1) on either side first to turn the LATCH connectors down (2).

3 - Line up the LATCH connectors with the LATCH guides, and then click both LATCH connectors onto the LATCH anchor bars.

4 - There should be two audible clicks, and the colors of the indicators on both LATCH connectors should be completely green. Check to make sure the child restraint is securely installed by pulling on both LATCH connectors.

(Install Using LATCH continued on PG. 40)



Install Using LATCH: (cont.)

5 - Make sure the **LEVEL LINE** on the restraint label is **LEVEL WITH THE GROUND**. Rotate the LATCH by pressing the LATCH rotate button (1) to adjust the recline of the seat (2).

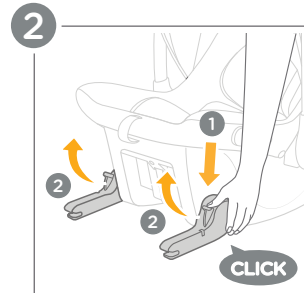
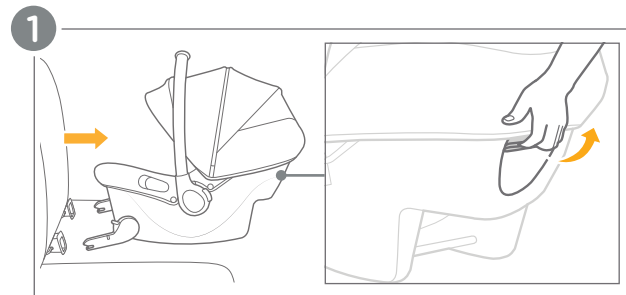
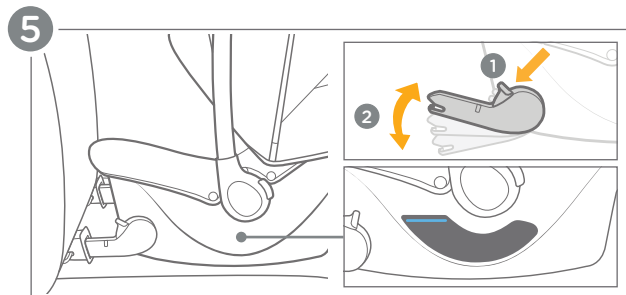
Check Install!

- Blue level line must be level with ground.
 - LATCH connectors are properly attached and show green on the indicators.
 - Child restraint should be stable and not move side to side more than 1 inch (2.5 cm).
-

To Remove LATCH:

1 - To remove the child restraint, squeeze the LATCH release lever on the back of the infant carrier and pull the child restraint away from the LATCH anchor bars.

2 - Press the LATCH rotate buttons to fold LATCH connectors back to the storage position. Remove child restraint from the vehicle.



Install Using Lap/Shoulder Belt:

INSTALL USING ONLY ONE METHOD.

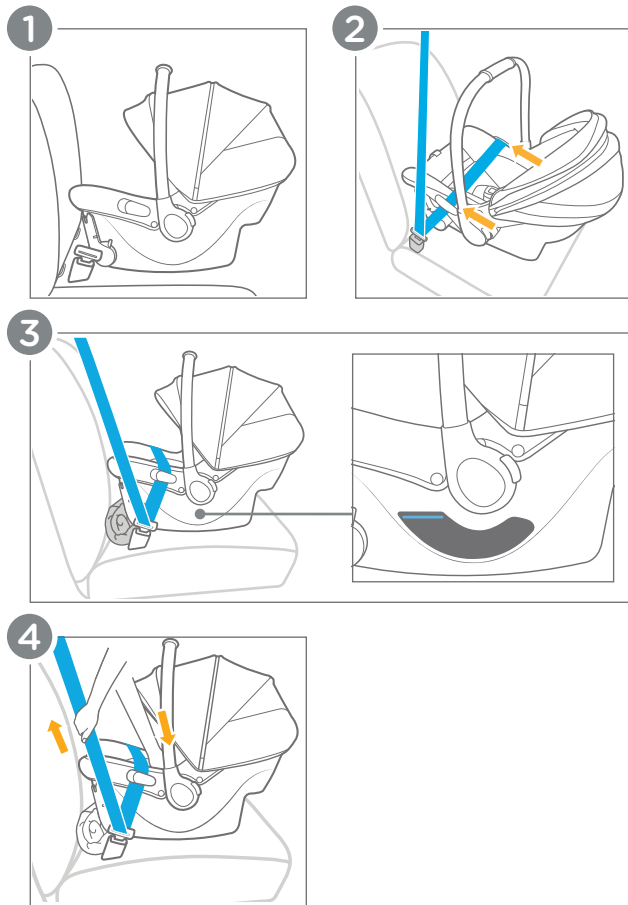
NEVER install using BOTH seat belt and LATCH.

Only install in a forward facing vehicle seat.

- 1 - Place the child restraint in the vehicle facing the back of the car.
- 2 - Thread your vehicles lap belt under BOTH lap belt guides.
- 3 - Make sure the **LEVEL LINE** on the restraint label is **LEVEL WITH THE GROUND**. A rolled-up towel or pool noodle may be used to adjust the recline of the child restraint.
- 4 - Press firmly into the middle of the child restraint while pulling the vehicle's shoulder belt to tighten.
- 5 - Lock the lap/shoulder belt using your car's locking mechanism (check your vehicle owner's manual). If your vehicle seat belt doesn't lock, use a locking clip.

Check Install!

- Blue level line must be level with ground.
- Vehicle belt is buckled and is as tight as possible around the child restraint. Vehicle belt is not loose or twisted.
- Child restraint should be stable and not move side to side more than 1 inch (2.5 cm) at belt path.



Install Using Lap Belt ONLY:

INSTALL USING ONLY ONE METHOD.

NEVER install using BOTH seat belt and LATCH.
Only install in a forward facing vehicle seat.

1 - Place the child restraint in the vehicle facing the back of the car.

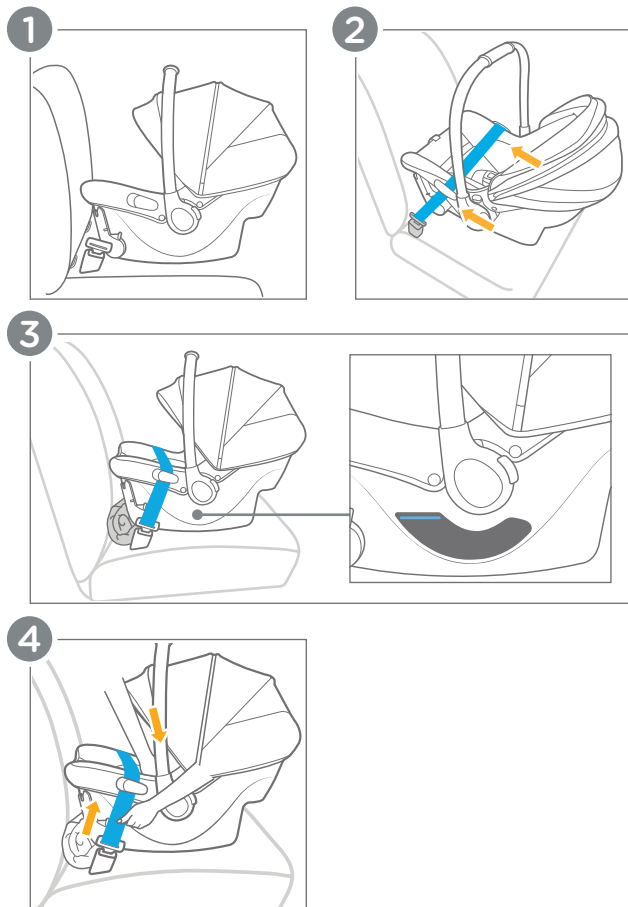
2 - Thread your vehicles lap belt under BOTH lap belt guides.

3 - Make sure the **LEVEL LINE** on the restraint label is **LEVEL WITH THE GROUND**. A rolled-up towel or pool noodle may be used to adjust the recline of the child restraint.

4 - Press firmly into the middle of the child restraint while pulling the vehicle's lap belt to tighten.

Check Install!

- Blue level line must be level with ground.
- Vehicle belt is buckled and is as tight as possible around the child restraint. Vehicle belt is not loose or twisted.
- Child restraint should be stable and not move side to side more than 1 inch (2.5 cm) at belt path.



Install in an Aircraft:

This child restraint is certified for airplane use. Contact your airline about their policy before traveling.

1a - Place the child restraint in the seat facing the back of the aircraft.

2 - Thread your aircraft lap belt under BOTH lap belt guides.

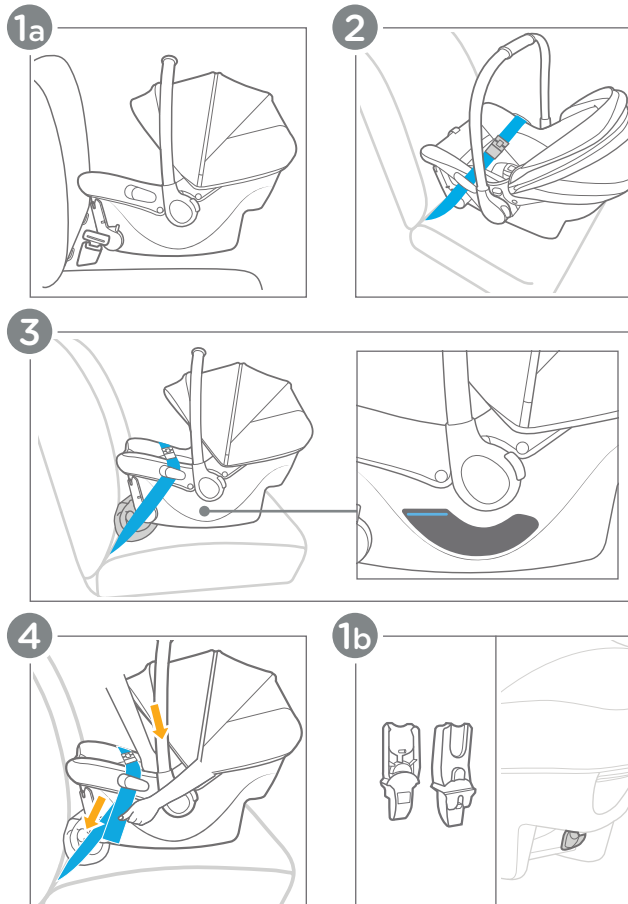
3 - Make sure the **LEVEL LINE** on the restraint label is **LEVEL WITH THE FLOOR OF THE AIRCRAFT**. A rolled-up towel or pool noodle may be used to adjust the recline of the child restraint.

4 - Press firmly into the middle of the child restraint while pulling the aircraft's lap belt to tighten.

Accessories:

1b - The infant carrier can attach to Joie strollers using adapters or with the stroller's armband. Adapters are included with Joie strollers.

Visit www.joiebaby.com for more information.



Removing Canopy/Fabric:

WARNING! NEVER use this child restraint without the softgoods in place.

1 - Unfasten the snaps under the canopy fabric on the sides of the child restraint.

2 - Press the round plastic tab on the canopy support, then pull it upwards to disconnect it from the hinge.

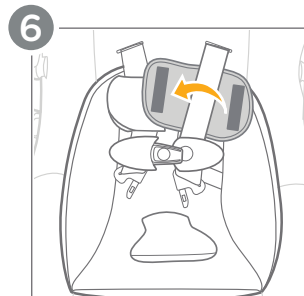
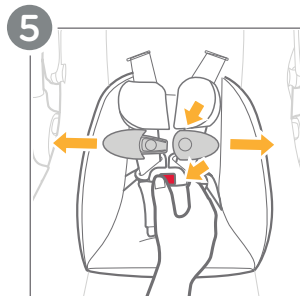
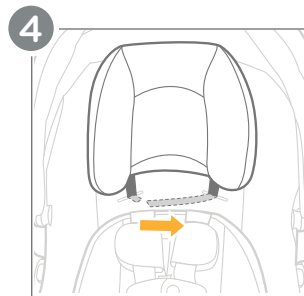
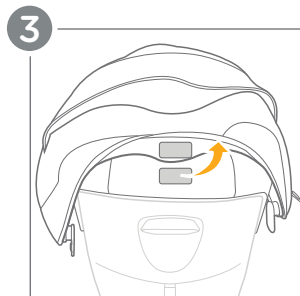
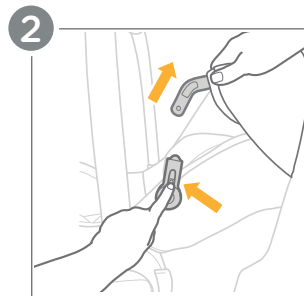
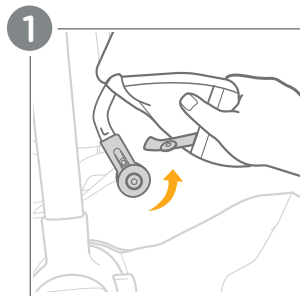
3 - Carefully pull apart the hook and loop closure at the back top of the seat.

4 - Refer to removing headrest on **PG. 26**.

5 - Unbuckle the buckle and chest clip.

6 - Unbutton and remove the shoulder pads.

(Removing Canopy/Fabric continued on **PG. 50**)



Removing Canopy/Fabric: (cont.)

7 - Remove the crotch pad, then thread the buckle and crotch belt through the bottom slot of both the infant insert and seat pad.

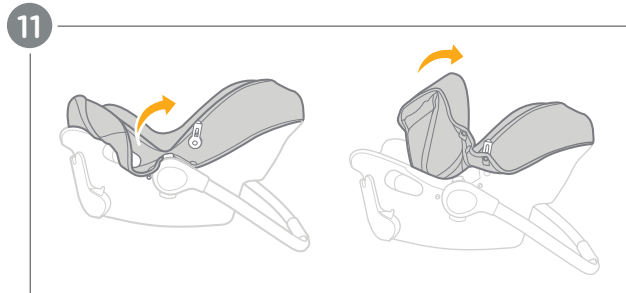
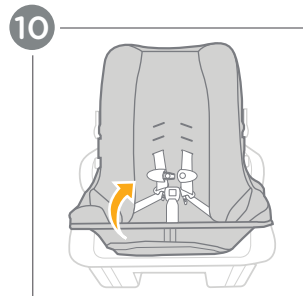
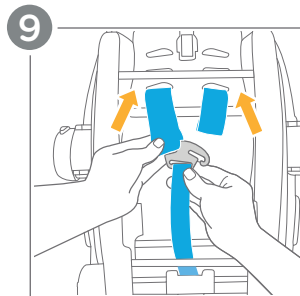
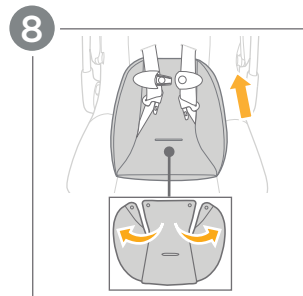
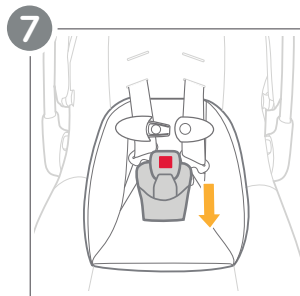
8 - Remove the infant insert.

9 - Disconnect the harness by referring to “Adjusting Harness Height” on **PG. 30**.

10 - Starting from the bottom, lift the seat pad to remove it from the child restraint shell.

11 - Carefully slide the lap belt guides through the opening in the fabric. Continue lifting the seat pad until it's completely removed.

To re-assemble, follow these steps in reverse order.



Care and Maintenance:

Washing:

Refer to the care label attached to the fabrics for washing and drying instructions. **DO NOT** attempt to remove the foam or tape under the seat pad.

Cleaning:

Use only mild detergent, water, and a soft cloth to clean the infant carrier shell, handle and harness straps. Air dry after cleaning. **DO NOT** iron harness straps. **NEVER** use bleach or any other harsh chemicals anywhere on the child restraint.

Buckle Care:

Rinse the buckle using warm water only. Do not use soaps, solvents, or lubricants. These can cause the buckle to malfunction. Air dry the buckle.

Care and Maintenance:

Storage:

When not in use for a long period, remove the infant carrier from the vehicle seat. Store the carrier in a cool, dry place that your child does not have access to.

Normal Wear and Tear:

It is normal for the fabric to fade from sunlight and show wear and tear over time even when used normally.

Regular Checks:

Regularly check if everything functions properly. If any parts are torn, broken, or missing stop using immediately and contact Joie for replacement parts.

Joie™

share the joy at joiebaby.com