

# Joie™

Instruction Manual

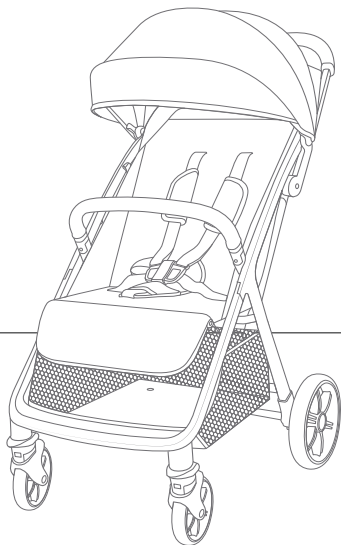
# nutmeg™

stroller

up to 50 lb maximum (22.7 kg)

up to 45 inches (114.3 cm)

---



product  
guide videos



## IMPORTANT!

Read the instructions in this manual before use of the product.

---

# Contents:

---

- 3 Warranty Information
- 4 Warnings
- 8 Parts List
- 10 Opening Stroller
- 12 Attaching & Detaching Front Wheels
- 14 Attaching & Detaching Rear Wheels
- 16 Attaching & Detaching Cupholder
- 18 Attaching & Detaching Armbar
- 20 Securing Your Child
- 26 Adjusting Backrest
- 28 Adjusting Calf Support
- 30 Using Front Swivel Lock
- 30 Using Brake
- 32 Using Canopy
- 32 Using Shoulder Harness Cover and Crotch Harness Cover
- 34 Folding Stroller
- 36 Using Accessories
- 40 Removing and Reassembling the Stroller Fabric
- 44 Using Carry Bag
- 46 Care and Maintenance

## Child Usage Requirements

This stroller is suitable for use with children who meet the following requirements:

Weight: up to 50 lb maximum (22.7 kg)

Height: up to 45 inches (114.3 cm)

---

# Warranty Information:

---

## Product Registration

Please fill in the information below. The model number and the date of manufacture are located on a label on the stroller frame. Fill out the prepaid registration postcard attached to the product and mail it today. To register your product online, please visit: <https://joiebaby.com/us/register-your-product>

**Model Name:** \_\_\_\_\_

**Model Number:** \_\_\_\_\_

**Date of Manufacture:** \_\_\_\_\_

**Date of Purchase:** \_\_\_\_\_

register your  
product online



## Limited Warranty

We have purposely designed our high-quality products so that they can grow with both your child and your family. Because we stand by our product, our gear is covered by a custom limited warranty per product, starting from the day it was purchased. Please have the proof of purchase, model number and date of manufacture available when you contact us. For warranty information please visit: [www.joiebaby.com](http://www.joiebaby.com)

## Contact:

### Joie Baby USA Consumer Service Contact Info

Address: 70 Thousand Oaks Blvd., Morgantown, PA 19543

Email: [info.us@joiebaby.com](mailto:info.us@joiebaby.com)

Phone: 1-866-798-7866

---



# WARNING

---

Failure to follow these warnings and instructions could result in serious injury or death.

- **NEVER** leave child unattended.
- **Choking Hazard:** Keep small parts away from children. These components may pose a choking hazard.
- **Suffocation Risk:** Remove all plastic covers before using the stroller. Destroy these covers or keep them completely out of reach of babies and children.
- **Broken Stroller:** If the stroller becomes damaged or broken, stop using it immediately. A damaged stroller can be unsafe.
- **Modification Warning:** Do not modify the stroller in any way unless specified in the manual. Unauthorized changes can compromise safety.
- **Genuine Parts Only:** Use only genuine parts and accessories from Joie.
- **Overloading, incorrect folding, and using accessories other than those approved by Joie,** e.g. child seats, bag hooks, rain covers, buggy boards, etc., may damage or make the stroller unsafe.

---

 **WARNING**

---

**Failure to follow these warnings and instructions could result in serious injury or death.**

- **Weight & Height Limits:** This stroller is only suitable for children up to 50 lb (22.7 kg) and 45 inches (114.3 cm) tall. Exceeding these limits can cause wear and tear, potentially leading to an unstable stroller.
- **Single Child Use:** This stroller is designed for one child only. Never transport more than one child at a time.
- **To prevent a hazardous, unstable condition,** do not place more than 10 lb (4.5 kg) in storage basket and never place purses, shopping bags, parcels or other items on the handle or canopy.
- **DO NOT** use storage basket as a child carrier.
- **Avoid serious injury from falling or sliding out.** ALWAYS use the harness. After fastening buckles, adjust belts to get a snug fit around your child.
- **Avoid Finger Entrapment:** Use care when folding and unfolding the stroller. Ensure the stroller is fully erected and locked before allowing your child near the stroller.

---



# WARNING

---

**Failure to follow these warnings and instructions could result in serious injury or death.**

- **Strangulation Hazard:** Do not place items with a string around your child's neck, suspend strings from the stroller, or attach strings to toys.
- **DO NOT** let your child play with the stroller.
- **ALWAYS** keep your child in view while in the stroller.
- **NEVER** allow your child to stand on the stroller.
- **The parking brake MUST be engaged** when the stroller is stopped and when placing and removing child.
- **Negotiate curbs and rough ground carefully.** Repeated impact could cause damage to the stroller.
- **The stroller is to be used only at walking speed** and is not intended for use while jogging, skating, etc.
- **NEVER** use the stroller on stairs or escalators. You may suddenly lose control of the stroller or your child may fall out.
- **The stroller does not replace a crib or a bed.** Should your child need to sleep, they should be placed in a crib or sleeping area based on your child's requirements.

---

 **WARNING**

---

**Failure to follow these warnings and instructions could result in serious injury or death.**

- **ALWAYS** allow the fabric to dry naturally away from direct heat.
- **DO NOT** leave the stroller exposed near a strong source of heat, i.e. a radiator or open fire, or store the stroller in a damp place.
- **To avoid burns**, never put hot liquids in your cupholder.
- **To prevent a hazardous, unstable condition**, DO NOT place more than 1 lb (0.5 kg) in the cupholder.
- **When using the stroller frame with a Joie car seat**, refer to the child usage requirements listed in the car seat instruction manual.
- **Child may slip into leg openings and strangle.** NEVER use in reclined carriage position unless the calf support is raised to cover the front opening and the fabric flaps are snapped to the side of the stroller seat.

---

## Parts List:

---

Please make sure there are no missing parts. Please contact Joie Customer Service if anything is missing.

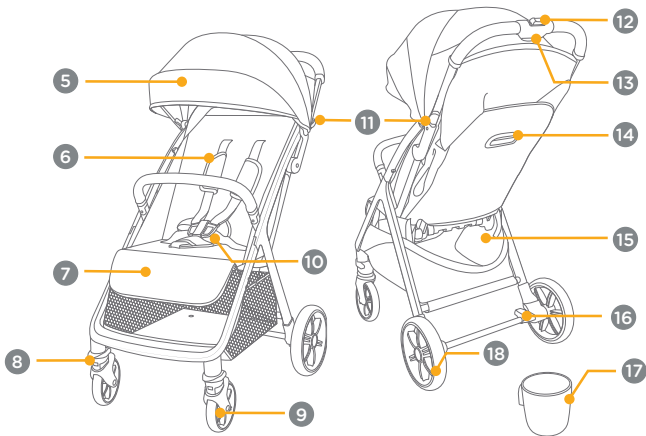
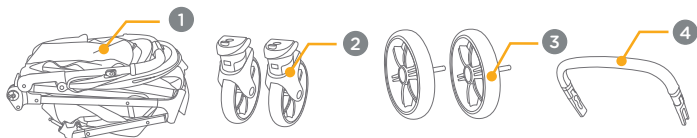
- 1 Stroller Frame
- 2 Front Wheel
- 3 Rear Wheel
- 4 Arm bar
- 5 Canopy
- 6 Shoulder Harness Cover
- 7 Calf Support
- 8 Swivel Lock
- 9 Front Wheel
- 10 Buckle
- 11 Infant Car Seat Lock
- 12 Secondary Lock
- 13 One-Hand-Fold Button
- 14 Backrest Adjuster Lever
- 15 Storage Basket
- 16 Brake Lever
- 17 Rear Wheel
- 18 Cupholder



---

# Parts List:

---



---

# Opening Stroller:

---

## 1 - Take the Stroller Frame Out.

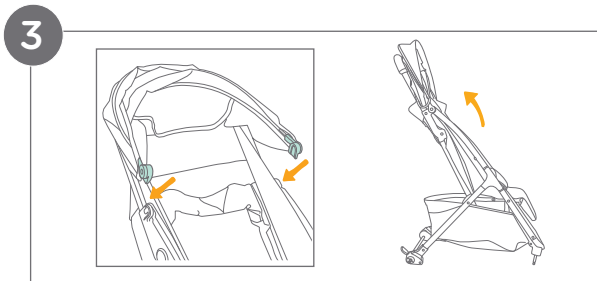
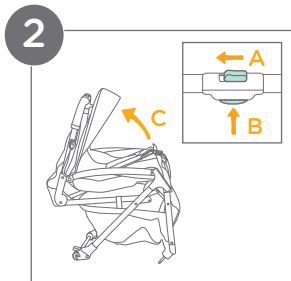
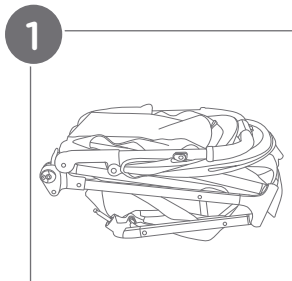
## 2 - Unfold the Stroller Frame:

Locate the secondary lock (A) on the handle. Slide it along the handle. Squeeze the one-hand-fold button (B) while holding the secondary lock in place. Rotate the handle upwards (C) until the stroller is fully open.

## 3 - Secure the Canopy (Optional):

Slide the canopy mounts onto the mount tabs on the stroller frame.

**IMPORTANT: Safety Check:** Before using the stroller, always ensure all latches are securely closed and locked.



---

# Attaching & Detaching Front Wheels:

---

## 1 - Attaching the Front Wheels:

Insert the front wheels into the designated slots on the front legs of the stroller frame.

A “clicking” sound will confirm that the wheels are properly locked in place.

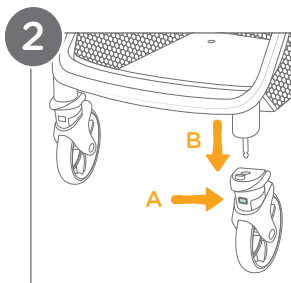
**IMPORTANT: Safety Check:** Always pull on the wheels after attachment to ensure they are securely fastened.

## 2 - Detaching the Front Wheels:

Find the release button (A) on the front wheel assembly.

Press the release button while holding the wheel.

Pull the wheel straight out from the front leg (B) to detach it.



---

# Attaching & Detaching Rear Wheels:

---

## 1 - Attaching the Rear Wheels:

Insert the rear wheels into the designated slots on the rear legs of the stroller frame.

A “clicking” sound will indicate that the wheels are properly locked in place.

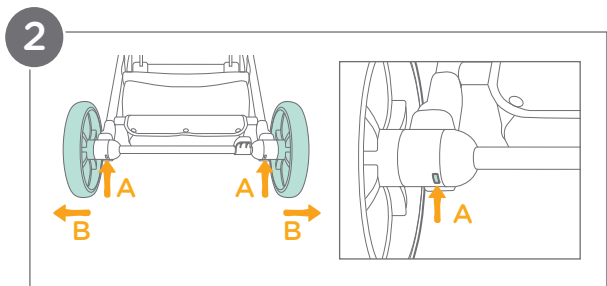
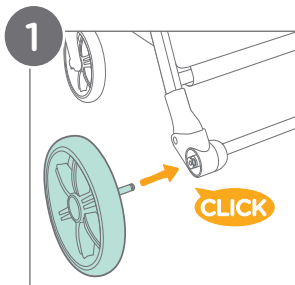
**IMPORTANT: Safety Check:** Always pull on the wheels after attachment to ensure they are securely fastened.

## 2 - Detaching the Rear Wheels:

Find the release button (A) on the rear wheel assembly.

Press the release button while holding the wheel.

Pull the wheel straight out from the rear leg (B) to detach it.



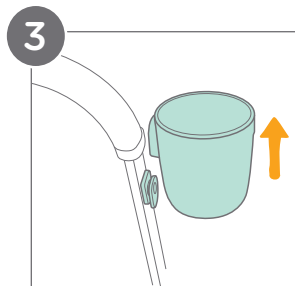
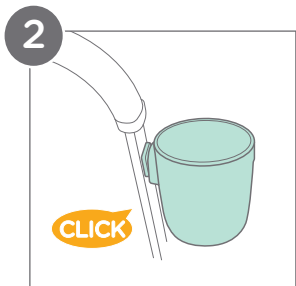
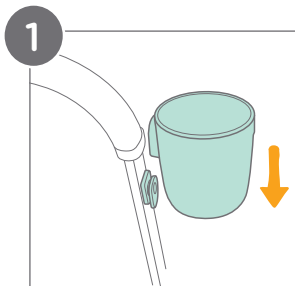
---

## Attaching & Detaching Cupholder:

---

- 1** - To attach, align the cupholder with the designated mount on the stroller frame. Slide the clip on the cupholder downward until it snaps over the mount.
- 2** - A “clicking” sound will indicate that the cupholder is properly locked in place.
- 3** - To detach cupholder, pull upward to slide it off of mount.





---

# Attaching & Detaching Armbar:

---

**IMPORTANT:** The armbar is not a substitute for the harness. Always secure your child with the harness for proper restraint.

## 1 - Attaching the Armbar:

Align the ends of the armbar with the designated armbar mounts on the stroller frame.

Push the armbar until it clicks into place.

A “clicking” sound will indicate that the armbar is properly locked in place.

## 2 - Removing the Armbar:

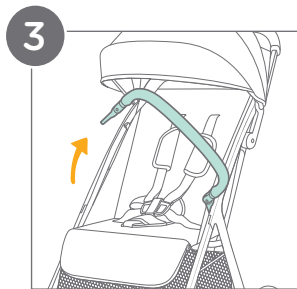
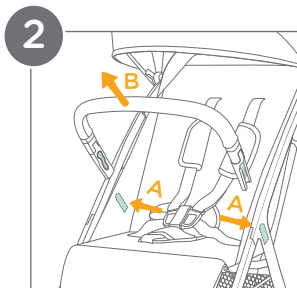
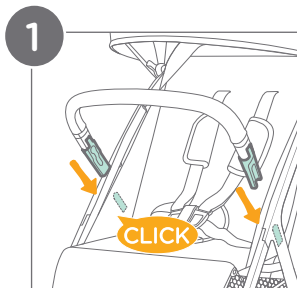
Find armbar release buttons on inner armbar. Press both armbar release buttons simultaneously (A).

Pull the armbar outward (B) to detach it from the stroller frame.

## 3 - Rotating the Armbar:

Locate the armbar release button on either inner side of the armbar.

While pressing the release button, rotate the armbar.



---

## Securing Your Child:

---

**IMPORTANT:** Always engage the parking brake: This is crucial whenever the stroller is stopped, especially when placing or removing your child. A parked stroller with a disengaged brake can roll away, posing a serious fall hazard.

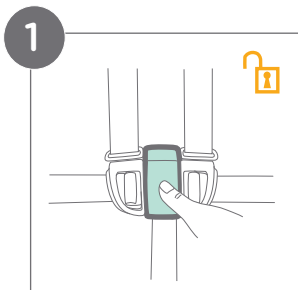
**Secure your child with the harness:** Never leave your child unbuckled in the stroller. A secure harness is essential to prevent them from falling or sliding out.

**Proper harness adjustment:** Ensure the harness straps are snug but comfortable.

**Shoulder strap positioning:** Never cross the shoulder straps. Always keep them straight over your child's shoulders to avoid putting pressure on their neck.

### 1 - Release Buckle:

Locate the button in the center of the buckle and press it firmly to release the harness straps.



## 2 - Lock Buckle:

Align the lap belt buckle with the shoulder harness buckle (A).

Insert the combined buckles together into the center buckle (B).

A “clicking” sound will indicate that the buckle is properly locked in place (C).

**IMPORTANT:** Always secure your child with the harness.

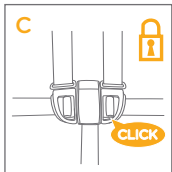
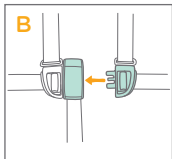
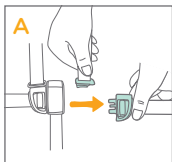
The arm bar is not a restraint and cannot prevent falls.

**DO NOT lift the stroller by the arm bar.** This can cause damage or injury.

**Use care** when snapping the arm bar on the stroller with a child in the stroller.

**CAREGIVER MUST** always help child get into and out of the stroller.

2

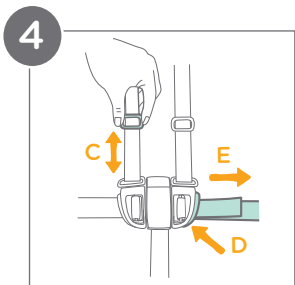
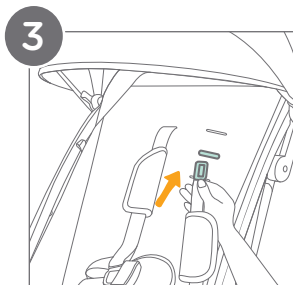
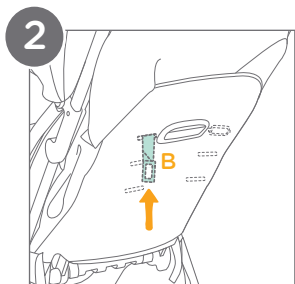
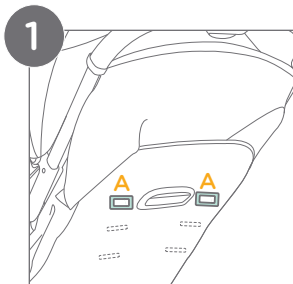


**IMPORTANT: Harness Check:** Always secure your child with the harness. The arm bar is not a restraint and cannot prevent falls.

### **Shoulder Harness Height Adjustment:**

- 1 -** Locate the shoulder harness anchors (A) on back of seat.
- 2 -** Turn the shoulder harness anchor (B) to face forward, aligning it with the front of the stroller. Thread the anchor through the shoulder harness slot from back to front.
- 3 -** Re-thread the anchor through the slot closest to your child's shoulder height.
- 4 -** Use the slide adjuster (C) to adjust the length of the shoulder harness straps. Press the button (D) on the slide adjuster to lengthen the waist harness straps (E).





---

# Adjusting Backrest:

---

## 1 - Recline Backrest:

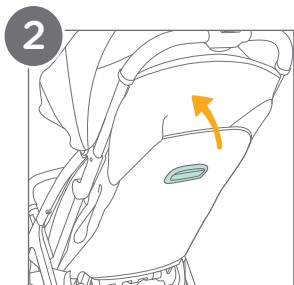
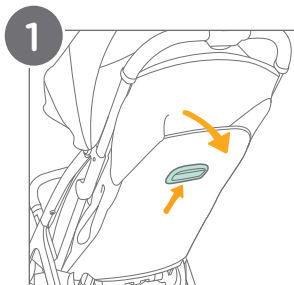
Locate the backrest adjuster handle. Squeeze the handle while gently pulling the backrest downward to your desired reclining position.

## 2 - Raise Backrest:

To raise the backrest, simply push it upwards until it reaches the desired position.

**IMPORTANT:** Always ensure the backrest is securely locked in place before placing your child in the stroller.

**Seat Adjustments:** When making adjustments to the stroller seat, make sure child's head, arms, and legs are clear of moving seat parts and stroller frame to prevent injury.



---

# Adjusting Calf Support:

---

## 1 - Raising the Support:

Lift the 3-position calf support upwards. A “clicking” sound will indicate that it is properly locked in place.

## 2 - Lowering the Support:

Find the adjustment buttons on both sides of the calf support (A) and press both buttons simultaneously.

While holding the buttons pressed, gently rotate the calf support downwards (B) to your desired position.

## 3 - Fully Recline the Stroller Seat:

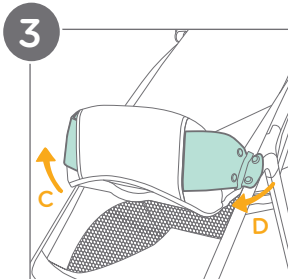
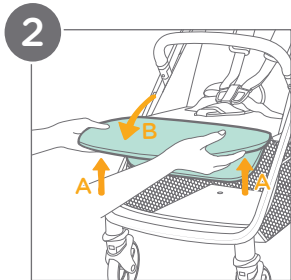
When using the stroller in full recline, the calf support must be fully raised (C) and the closure flaps attached.

When fully reclined, pull the closure flaps located at the bottom of the calf support outwards.

Locate the fabric loops on the side of the seat and pass the closure flaps through the loops.

Fasten the closure flaps securely to the corresponding snaps on the outside of the seat (D).

**WARNING:** Armbar needs to be removed when used in full recline. See page 18 for removal instructions.



---

## Using Front Swivel Lock:

---

- 1 - Push the front swivel locks upwards to fix the wheels in a straight position. This will prevent them from swiveling freely. Push the locks back down to release them.

**Tip:** Using the swivel locks is recommended when traveling on uneven surfaces.

---

## Using Brake:

---

### 2 - Locking the Brakes:

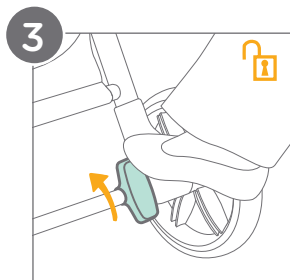
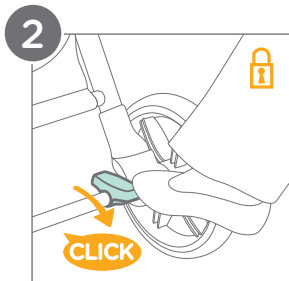
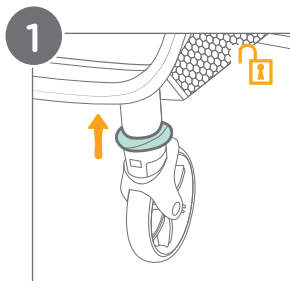
Step firmly on the brake lever and rotate the lever down. A “clicking” sound will indicate that the brakes are properly locked in place.

### 3 - Unlocking the Brakes:

Rotate the brake lever forward with your foot. The lever will return to its original position, and the wheels should move freely.

**WARNING:** Always apply the parking brake whenever the stroller is stopped.

Gently push the stroller to ensure the brake is securely engaged.



---

## Using Canopy:

---

### 1 - Opening and Closing the Canopy:

To open, pull the canopy forward towards the front of the seat. To close, push the canopy back until it reaches the desired position.

### Ventilation:

- 2 - For airflow, flip up the canopy window cover on top of stroller.
- 3 - For additional airflow, flip up the canopy window cover on back of stroller.

---

## Using Shoulder Harness Cover and Crotch Harness Cover:

---

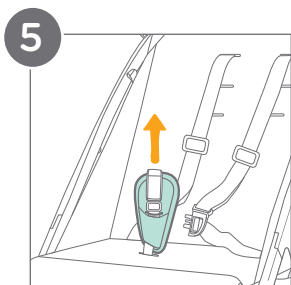
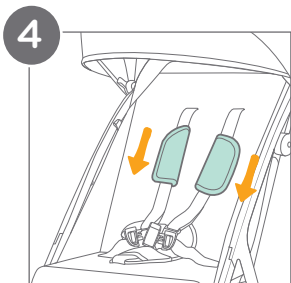
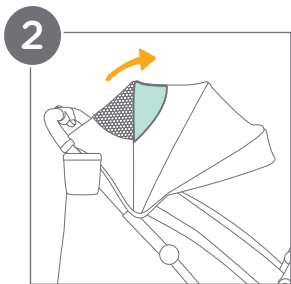
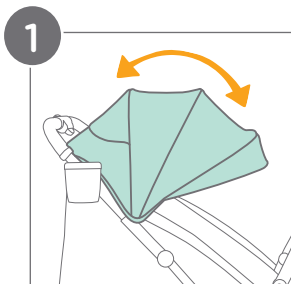
### 4 - Harness Covers:

Unbuckle the harness straps. Slide harness covers off straps, by pulling them down over the waist buckle.

### 5 - Crotch Pad:

Unbuckle the harness straps. Lift pad up to remove.





---

## Folding Stroller:

---

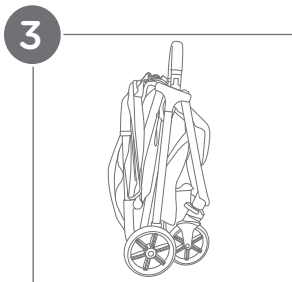
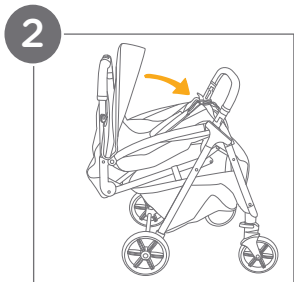
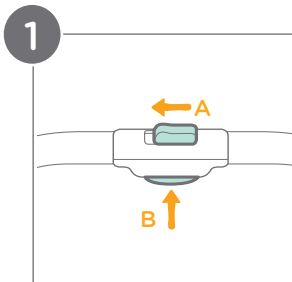
**IMPORTANT:** Always close the canopy before folding the stroller. This prevents damage to the canopy fabric.

Ensure that the snaps on each side of the calf support are unfastened before folding the stroller.

Ensure that the front swivel locks are released before folding the stroller. See page 30 for swivel lock details.

### Folding the Stroller:

- 1 - Locate and slide the secondary lock (A). Squeeze the one-hand-fold button (B) while holding the secondary lock (A) in place.
- 2 - Gently push the stroller forward to initiate the folding mechanism.
- 3 - The stroller frame will fold and automatically lock into an upright position on its own.



---

## Using Accessories

---

**IMPORTANT:** Always adjust the backrest to the lowest position and collapse the canopy before attaching the car seat.

**Never fold the stroller with the car seat attached.** Always remove the car seat first.

### Engaging the Infant Car Seat Lock:

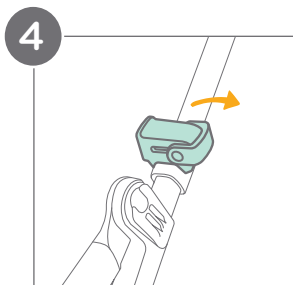
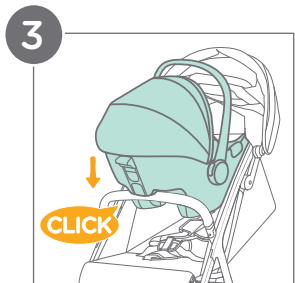
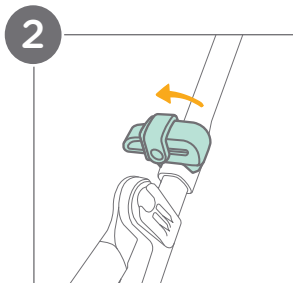
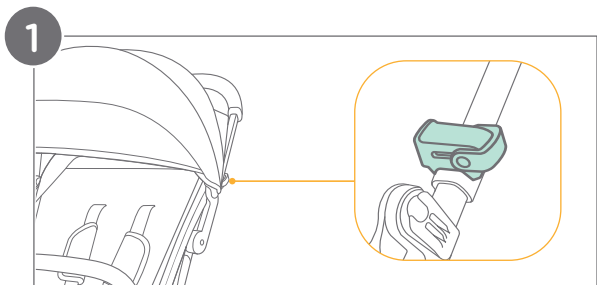
- 1 - Find the infant car seat lock located near the base of the stroller handle.
- 2 - Engage the infant car seat lock by sliding it towards inside of stroller.

### Attaching the Car Seat:

- 3 - Insert the car seat onto the stroller frame, over the armbar, but under the infant car seat lock.  
A “clicking” sound will indicate that the car seat is properly locked in place.

### Releasing the Infant Car Seat Lock:

- 4 - Release the infant car seat lock by sliding it towards outside of stroller.  
Infant car seat lock may be kept engaged or released as needed. Car seat may be installed or removed with infant car seat lock engaged.



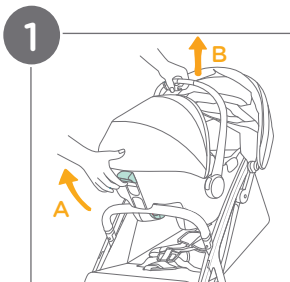
## 1 - Removing the Car Seat:

Locate the release handle (A) on the car seat and squeeze it.

While squeezing release handle, lift the infant car seat upwards (B) to detach it from the stroller.

**WARNING: Fall Hazard:** Always check that the infant car seat is securely attached to the stroller by pulling up on the car seat.

**Always secure your child** with the infant car seat harness.



---

# Removing and Reassembling the Stroller Fabric:

---

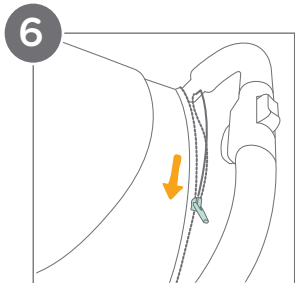
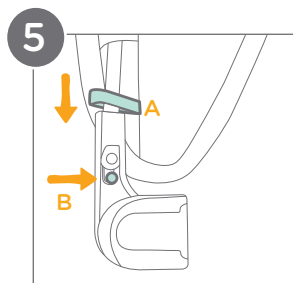
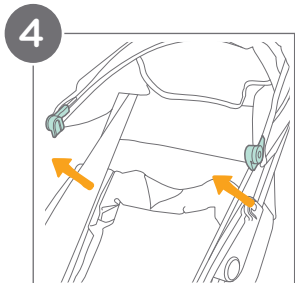
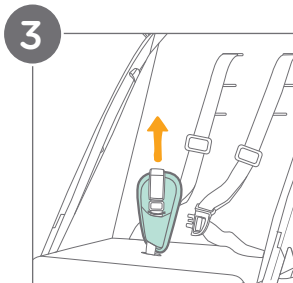
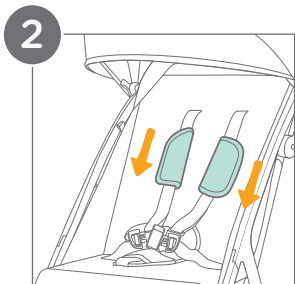
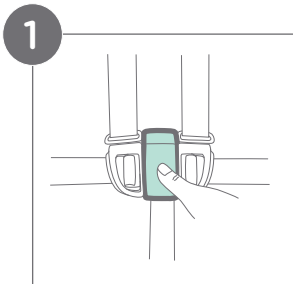
## Removing the Stroller Fabric:

- 1 - Unbuckle the harness.
- 2 - Slide harness covers off straps, by pulling them down over the waist buckle.
- 3 - Lift off the crotch pad cover for easier access.
- 4 - To remove canopy fabric, slide canopy mounts forward to detach canopy.
- 5 - Unhook the elastic strap (A) from the canopy mount on one side of the canopy.

Locate the button (B) on inside of canopy mount and push it while pulling the metal support out of the hinge.

- 6 - Unzip the canopy from the support bar and slide fabric off.





## **1 - Removing the Seat Fabric:**

On the sides of the seat, pull the plastic tabs upwards to detach the fabric from the frame.

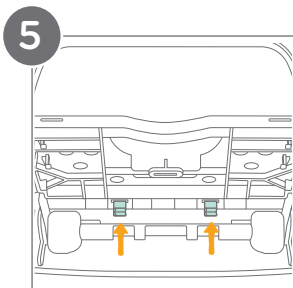
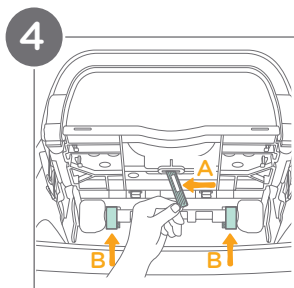
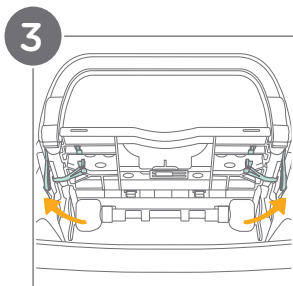
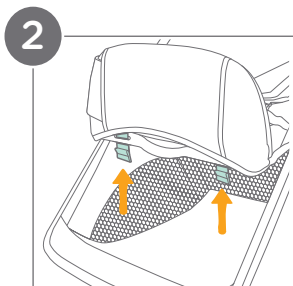
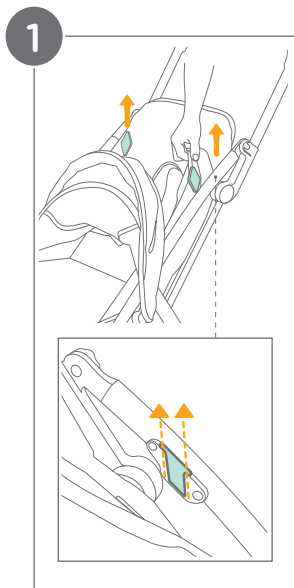
## **2 - Calf Support:**

Align the webbing tabs with the slot in the plastic on the calf support. Pass the webbing through the slot.

### **Seat Base:**

- 3** - On the bottom of the seat, undo the elastic loops from the tabs.
- 4** - Rotate the plastic ring (A) on the underside of the seat to allow it to pass through the crotch buckle slot.  
  
Undo loops and hooks (B) wrapped around seat tubing.
- 5** - Pass the webbing through the plastic slots on the bottom of the seat.

The fabric should now be loose and can be lifted completely off the frame.



---

## Using Carry Bag:

---

A carry bag is included only when purchasing Nutmeg as a travel system.

Fold the stroller per instructions on page 34.

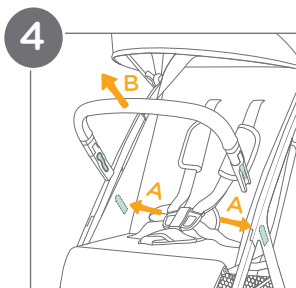
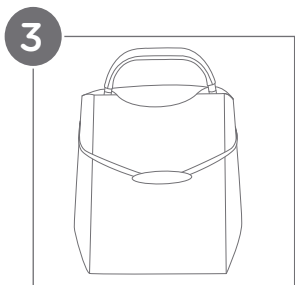
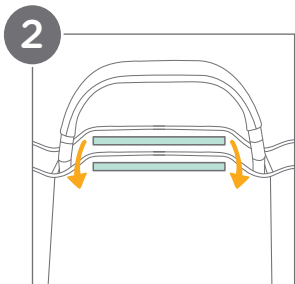
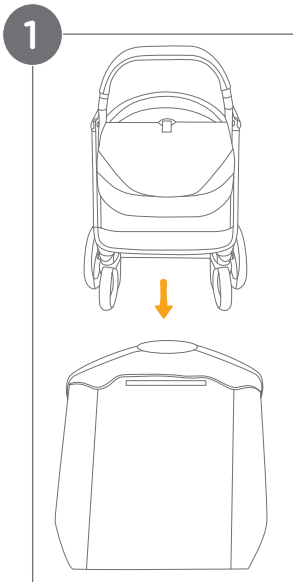
- 1 - Insert folded stroller straight into carry bag.
- 2 - Armbar will be protruding from top of carry bag. Attach corresponding loops and hooks for closure through the arm bar opening .
- 3 - The armbar can then be used as a handle to carry the stroller.

For more compact travel, the armbar can be removed and inserted into the carry bag. In this case, use the included strap on the carry bag.

### 4 - Removing the Armbar:

Find armbar release buttons on inner armbar. Press both armbar release buttons simultaneously (A).

Pull the armbar outward (B) to detach it from the stroller frame.



---

## Care and Maintenance:

---

### Cleaning:

**Removable seat pad:** Hand wash in cold water and air dry. Do not bleach. Refer to the care label for specific washing instructions.

**Stroller frame:** Wipe clean with a solution of warm water and mild household soap. Avoid bleach and harsh detergents.

**Plastic parts:** Periodically wipe clean with a damp cloth.

**Metal parts:** After contact with water, thoroughly dry the metal frame to prevent rust.

### Maintenance:

**Regular inspection:** Check stroller regularly for loose or missing parts. Discontinue use if parts are loose or missing.

**Loose screws:** Tighten any loose screws you find.

**Worn parts:** Replace any worn or damaged parts. Use only Joie replacement parts.

**Torn material or stitching:** Repair or replace torn fabric or stitching. Use only Joie replacement fabrics.

### Contact Joie Consumer Service at:

Email: [info.us@joiebaby.com](mailto:info.us@joiebaby.com) • Phone: 1-866-798-7866

## Storage:

**Sun and heat exposure:** Avoid excessive sun or heat exposure to prevent fading or warping of parts.

**Drying after use:** If the stroller gets wet, open the canopy and allow it to dry completely before storing.

## Wheel Maintenance:

**Squeaking wheels:** Apply a light coat of lubricating oil (e.g., silicone spray, anti-rust oil, or sewing machine oil) directly to the axle and wheel assembly to eliminate squeaking.

## Beach Use:

**After beach use:** Thoroughly clean the stroller to remove sand and salt from the mechanisms and wheels. This helps prevent rust and ensure smooth operation.

## Cupholder:

For a more thorough cleaning, remove the cupholder following the instructions on page 16.

Use mild detergent and warm water.

The cupholder can be placed on the top rack only of your dishwasher for convenient cleaning.

**Joie™**

**Effortlessly happy.**

Helping parents be their best  
with worry-free baby gear.