

Joie™

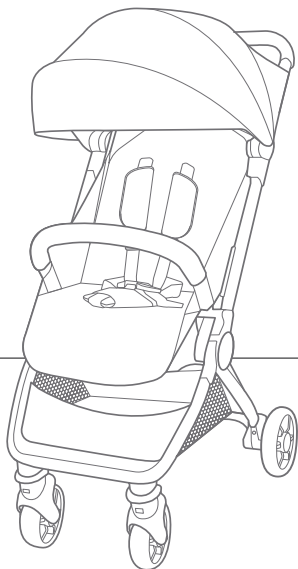
Instruction Manual

orzo mini™

compact travel stroller

up to 50 lb. (22.7 kg)

up to 45 in. (114.3 cm)



IMPORTANT!

Read all instructions before assembling and using the stroller. Keep instructions for future use.

Contents:

- 3 Warranty Information
- 4 Warnings
- 8 Parts List
- 10 Opening Stroller
- 12 Attaching & Detaching Front Wheels
- 14 Attaching & Detaching Rear Wheels
- 16 Securing Canopy
- 18 Attaching & Detaching Arm Bar
- 20 Securing Your Child
- 24 Adjusting Recline
- 26 Adjusting Calf Support
- 28 Using Front Swivel Locks
- 30 Using Brake
- 32 Using Canopy
- 34 Removing Harness & Buckle Covers
- 34 Adjusting Handlebar
- 36 Folding Stroller
- 38 Care & Maintenance

Child Usage Requirements

This stroller is suitable for use with children who meet the following requirements:

Weight: up to 50 lb. (22.7 kg)

Height: up to 45 in. (114.3 cm)

Warranty Information:

Product Registration

Please fill in the information below. The model number and the date of manufacture are located on a label on the stroller frame. Fill out the prepaid registration postcard attached to the product and mail it today. To register your product online, please visit: <https://joiebaby.com/us/register-gear>.

Model Name: _____

Model Number: _____

Date of Manufacture: _____

Date of Purchase: _____

register your
product online



Limited Warranty

We have purposely designed our high-quality products so that they can grow with both your child and your family. Because we stand by our product, our gear is covered by a custom limited warranty per product, starting from the day it was purchased. Please have the proof of purchase, model number and date of manufacture available when you contact us. For warranty information please visit: www.joiebaby.com.

Contact

In the USA:

Joie Baby USA Consumer Service Contact Info.

Address: 70 Thousand Oaks Blvd., Morgantown, PA 19543

In Canada:

Joie Bébé Canada Consumer Service Contact Info.

Address: PO Box 96528 RPO Brunswick, Kirkland, Quebec H9H 5L4

Email: info.us@joiebaby.com

Phone: 1-866-798-7866

WARNING

Failure to follow these warnings and instructions could result in serious injury or death.

- **NEVER** leave child unattended.
- **Choking Hazard:** Keep small parts away from children. These components may pose a choking hazard.
- **Suffocation Risk:** Remove all plastic covers before using the stroller. Destroy these covers or keep them completely out of reach of babies and children.
- **Broken Stroller:** If the stroller becomes damaged or broken, stop using it immediately. A damaged stroller can be unsafe.
- **Modification Warning:** **DO NOT** modify the stroller in any way unless specified in the manual. Unauthorized changes can compromise safety.
- **Genuine Parts Only:** Use only genuine parts and accessories from Joie.
- **Overloading, incorrect folding, and using accessories other than those approved by Joie,** e.g. child seats, bag hooks, rain covers, buggy boards, cup holders, etc., may damage or make the stroller unstable and unsafe.

WARNING

Failure to follow these warnings and instructions could result in serious injury or death.

- **Weight & Height Limits:** This stroller is only suitable for children up to 50 lb. (22.7 kg) and 45 in. (114.3 cm) tall, whichever comes first. Exceeding these limits can cause wear and tear, potentially leading to an unstable stroller.
- **Single Child Use:** This stroller is designed for one child only. **NEVER** transport more than one child at a time.
- **To prevent a hazardous, unstable condition, DO NOT** place more than 10 lb. (4.5 kg) in the storage basket and **NEVER** place purses, shopping bags, parcels, or other items on the handlebar or canopy.
- **DO NOT** use the storage basket as a child carrier.
- **Avoid serious injury from falling or sliding out. ALWAYS** use the harness. After fastening the buckles, adjust the harness straps to get a snug fit around your child.

WARNING

Failure to follow these warnings and instructions could result in serious injury or death.

- **Avoid Finger Entrapment:** Use care when folding and unfolding the stroller. Ensure the stroller is fully erected and locked before allowing your child near the stroller.
- **Strangulation Hazard: DO NOT** place items with a string around your child's neck, suspend strings from the stroller, or attach strings to toys.
- **DO NOT** let your child play with the stroller.
- **ALWAYS** keep your child in view while they are in the stroller.
- **NEVER** allow your child to stand on the stroller.
- **The brake MUST be engaged** when the stroller is stopped and when placing and removing child.
- **Negotiate curbs and rough ground carefully.** Repeated impact could cause damage to the stroller.

WARNING

Failure to follow these warnings and instructions could result in serious injury or death.

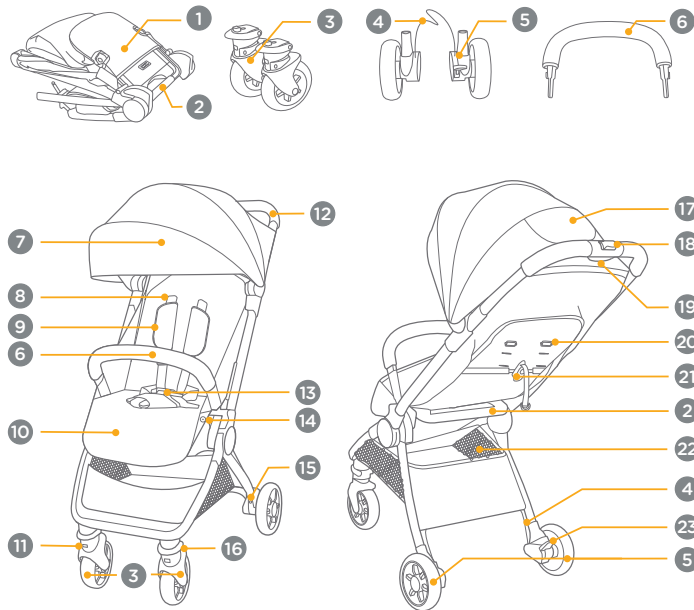
- **The stroller is to be used only at walking speed** and is not intended for use while jogging, skating, etc.
- **NEVER** use the stroller on stairs or escalators. You may suddenly lose control of the stroller or your child may fall out.
- **The stroller does not replace a crib or a bed.** Should your child need to sleep, they should be placed in a crib or sleeping area based on your child's requirements.
- **This stroller is not compatible** with any infant car seat. **DO NOT** attempt to attach an infant car seat to this stroller.
- **ALWAYS** allow the fabric to dry naturally away from direct heat.
- **DO NOT** leave the stroller near a strong heat source, i.e. a radiator or open fire.
- **DO NOT** store the stroller in a damp place.

Parts List:

Please make sure there are no missing parts. Please contact Joie Consumer Service if anything is missing.

- 1 Stroller Frame
- 2 Carry Handle
- 3 Front Wheels
- 4 Brake Line
- 5 Rear Wheels
- 6 Arm Bar
- 7 Canopy
- 8 Harness Straps
- 9 Shoulder Harness Covers
- 10 Calf Support
- 11 Front Wheel Release Button (x2)
- 12 Handlebar
- 13 Restraint Buckle
- 14 Calf Support Adjustment Button (x2)
- 15 Rear Wheel Release Button (x2)
- 16 Front Swivel Lock (x2)
- 17 Canopy Window Cover
- 18 Secondary Lock Release Button
- 19 One-Hand-Fold Button
- 20 Harness Strap Anchor (x2)
- 21 Recline Adjuster
- 22 Storage Basket
- 23 Brake Lever

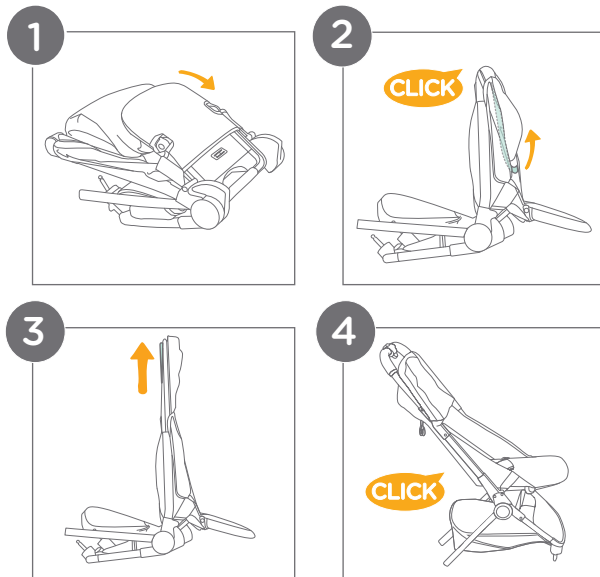
Parts List:



Opening Stroller:

- 1 - Rotate the calf support and seat bottom forward.
- 2 - Rotate the handlebar up and towards the back of the stroller until you hear or feel a **CLICK**.
- 3 - Pull up firmly on the handlebar while lifting the stroller and the bottom of the frame will open.
- 4 - Hear or feel a **CLICK** to confirm that the stroller is completely open.

IMPORTANT: Check that the stroller is completely open by pushing down on the handlebar.



Attaching & Detaching Front Wheels:

1 - Attaching the Front Wheels:

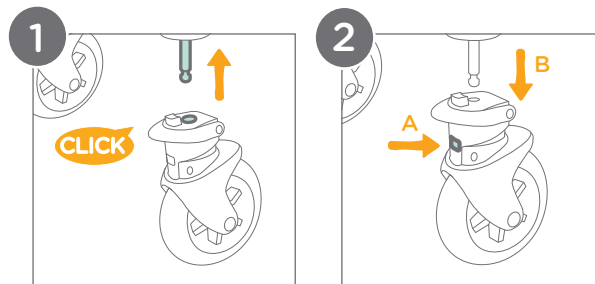
Insert the front wheels into the front legs.

Hear or feel a **CLICK** to confirm that the wheels are properly locked in place.

IMPORTANT: Safety Check: ALWAYS pull on the wheels after attachment to ensure that they are securely fastened.

2 - Detaching the Front Wheels:

Press the front wheel release button (A) while holding the wheel. Pull the wheel straight out from the front leg (B) to detach it.



Attaching & Detaching Rear Wheels:

1 - Attaching the Rear Wheels:

Insert the rear wheels into the rear legs (A).

Ensure that the brake lever is facing the inside of the stroller (B).

Hear or feel a **CLICK** to confirm that the wheels are properly locked in place.

IMPORTANT: Safety Check: ALWAYS pull on the wheels after attachment to ensure that they are securely fastened.

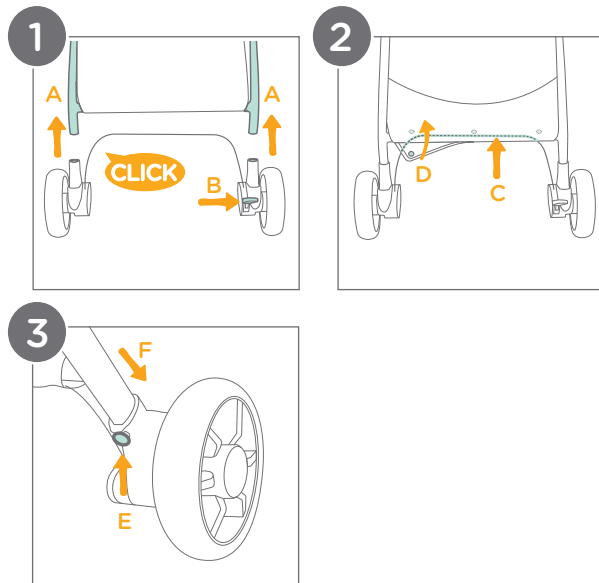
2 - Securing the Brake Line and Storage Basket:

Wrap the back flap of the storage basket around the back tubing of the stroller frame. Ensure that the brake line is secured inside of the back flap (C).

Secure the storage basket into place by fastening the 3 sets of snaps (D).

3 - Detaching the Rear Wheels:

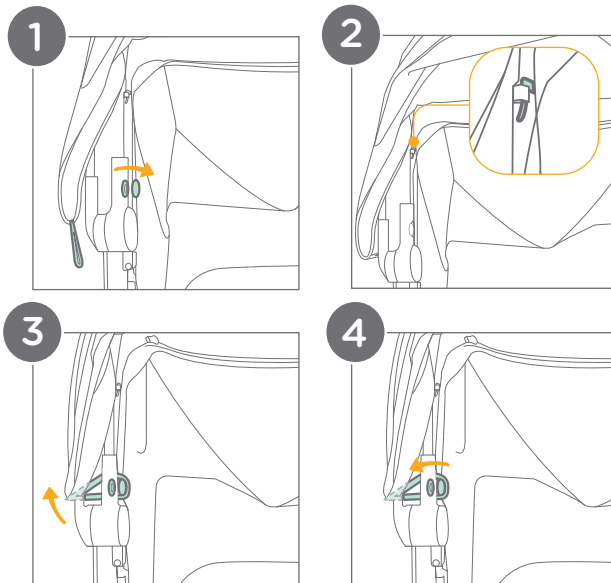
Unsnap the storage basket from Step 2. Press each rear wheel release button (E) while holding the wheel. Pull the rear wheel away from the rear leg (F) to detach it.



Securing Canopy:

- 1 - Open the snap on the side of the stroller frame, near the bottom of the canopy.
- 2 - Ensure that the canopy clip is secured in place.
- 3 - Wrap the canopy elastic around the back of the frame and in between the 2 sides of the snap.
- 4 - Refasten the snap, keeping the canopy elastic in the middle.

Repeat all steps on the other side of the stroller frame.



Attaching & Detaching Arm Bar:

1 - Attaching the Arm Bar:

Insert both ends of the arm bar into the arm bar mounts. Hear or feel a **CLICK** to confirm that the arm bar is properly locked in place.

2- Detaching the Arm Bar:

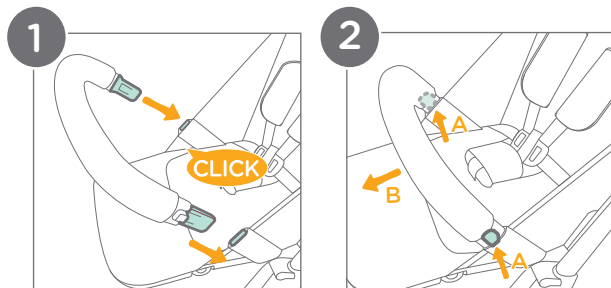
To remove the arm bar, press the arm bar release buttons (A) and pull the arm bar out (B).

IMPORTANT: ALWAYS secure the child with the harness. The arm bar is not a restraint device.

DO NOT lift the stroller by the arm bar. This can cause damage or injury.

Use care when attaching the arm bar on the stroller with a child in the stroller.

CAREGIVER MUST ALWAYS help the child get into and out of the stroller.



Securing Your Child:

1 - Releasing the Restraint Buckle:

Locate the button in the center of the restraint buckle and press it firmly to release the harness straps.

2 - Locking the Restraint Buckle:

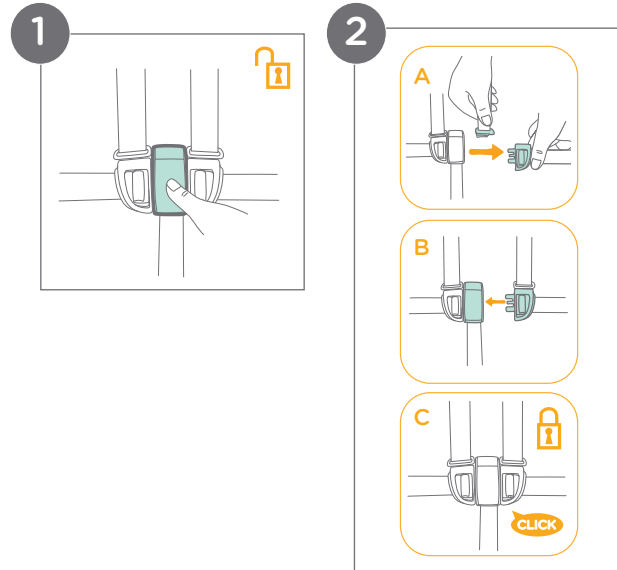
Slide the shoulder harness buckle into the waist belt buckle (A). Insert the combined buckles into the center buckle (B). Hear or feel a **CLICK** to confirm that the restraint buckle is properly locked in place (C). Repeat on the other buckle.

IMPORTANT: ALWAYS engage the brake:

This is crucial whenever the stroller is stopped, especially when placing or removing your child. A parked stroller with a disengaged brake can roll away, posing a serious fall hazard.

Secure your child with the harness: NEVER leave your child unbuckled in the stroller. A secure harness is essential to prevent them from falling or sliding out.

Proper harness adjustment: Ensure that the harness straps are snug but comfortable. The space between the child and the harness straps should be about a 1/2 inch (1 cm).



IMPORTANT: Shoulder strap positioning: **NEVER** cross the shoulder straps. **ALWAYS** keep them straight over your child's shoulders to avoid putting pressure on the child's neck.

(Securing Your Child continued on pg. 22)

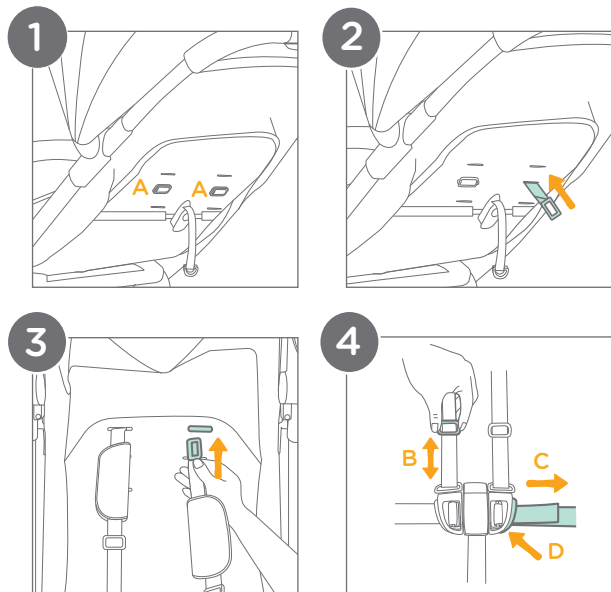
Securing Your Child: (cont.)

Shoulder Harness Height Adjustment:

- 1 - Locate the shoulder harness anchors (A) on the back of the seat.
- 2 - Turn the harness anchor to be in line with the harness strap. Thread it through the shoulder harness slot from back to front.
- 3 - Re-thread the harness anchor through the correct slot from front to back. Ensure that both sides are adjusted to slots at the same height.
- 4 - Use the slide adjuster (B) to adjust the length of the shoulder harness straps. Pull the waist harness strap (C) to tighten the waist harness. Press the button (D) on the waist belt buckle and pull to loosen the waist harness strap (C).

IMPORTANT: DO NOT adjust the shoulder harness height with a child in the stroller.

Shoulder harness height should be at or slightly above the child's shoulders.



Adjusting Recline:

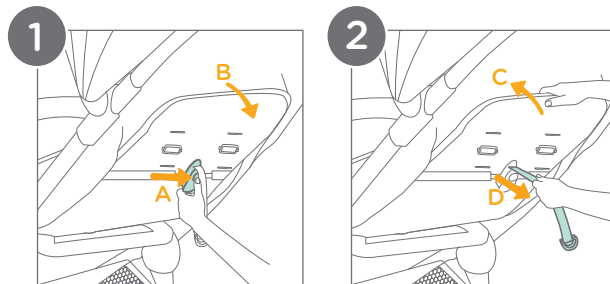
1 - Reclining the Backrest:

Press the lever (A) in the center of the recline adjuster while pulling the backrest backward (B).

2 - Raising the Backrest:

Push the backrest forward (C) while pulling the webbing (D) at the end of the recline adjuster.

IMPORTANT: When making adjustments to the recline, make sure the child's head, arms, and legs are clear of moving seat parts and the stroller frame to prevent injury.



Adjusting Calf Support:

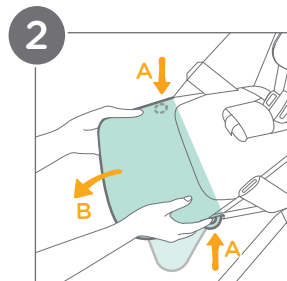
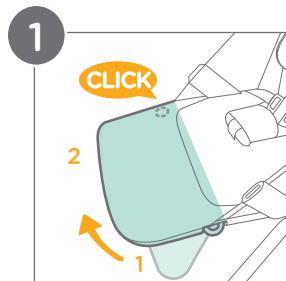
There are 2 positions for the calf support.
Position 1 is down and Position 2 is up.

1 - Raising the Calf Support:

To raise the calf support, lift the calf support upward. Hear or feel a **CLICK** to confirm that it is in Position 2.

2 - Lowering the Calf Support:

Squeeze both calf support adjustment buttons on the sides of the calf support (A) and gently rotate the calf support downward (B).



Using Front Swivel Locks:

1- Locking the Wheels:

Ensure that the front wheels are positioned straight ahead, not angled to the side or turned around.

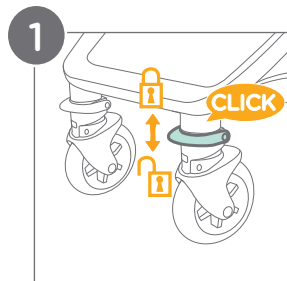
The swivel locks are located on the front of each wheel.

Push up on each front swivel lock. Hear or feel a **CLICK** to confirm that the wheels are properly locked in a straight position.

Unlocking the Wheels:

Push down on each front swivel lock. Hear or feel a **CLICK** to confirm that the wheels are unlocked. The wheels will swivel freely again.

💡 It is recommended to use the front swivel locks on uneven surfaces.



Using Brake:

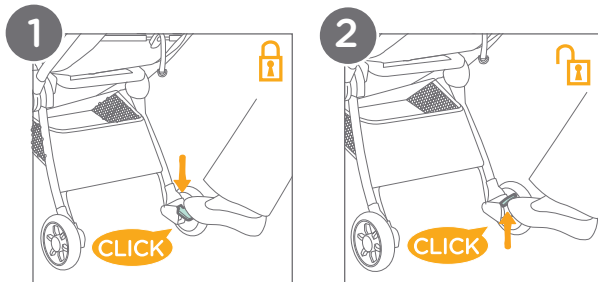
1 - Engaging the Brake:

Step firmly on the brake lever with your foot to engage it. Hear or feel a **CLICK** to confirm that the brake is securely engaged.

2 - Disengaging the Brake:

Lift the brake lever upwards with your foot to disengage it. The lever will return to its original position, and the wheels should move freely. Hear or feel a **CLICK** to confirm that the brake is fully disengaged.

WARNING: Always engage the brake whenever the stroller is stopped. Gently push the stroller to ensure that the brake is securely engaged.



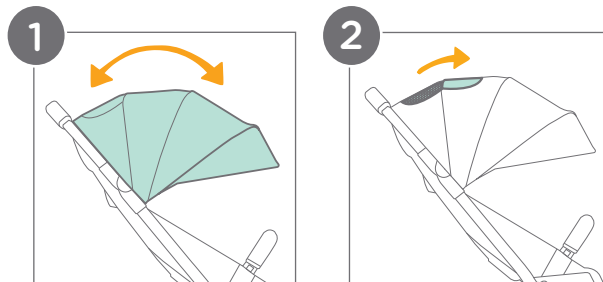
Using Canopy:

1 - Opening and Closing the Canopy:

To open, pull the canopy forward towards the front of the seat. To close, push the canopy back until it reaches the desired position.

Ventilation:

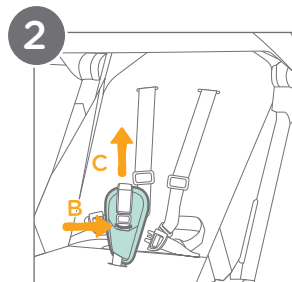
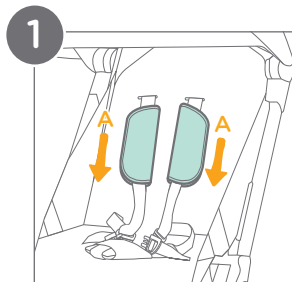
- 2 - For airflow, undo the hook and loop fastener and flip open the canopy window cover on the top of the stroller.



Removing Harness & Buckle Covers:

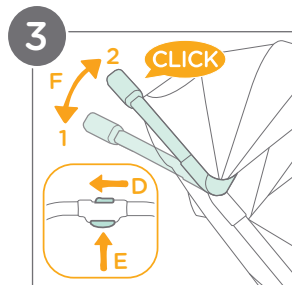
1 - Removing the Shoulder Harness Covers:

Unbuckle the harness straps and slide the shoulder harness buckle out of the waist buckle. Slide the harness covers off of the straps by pulling them down over the waist buckle (A).



2 - Removing the Crotch Harness Cover:

Unbuckle the harness straps. Unthread the center buckle from the elastic (B) on the inside of the crotch buckle cover. Lift the crotch buckle cover up to remove it (C).



Adjusting Handlebar:

3 - There are 2 Positions for the Handlebar.

Slide and hold the secondary lock release button (D). Squeeze the one-hand-fold button (E) while moving the handlebar up or down to the desired position (F).

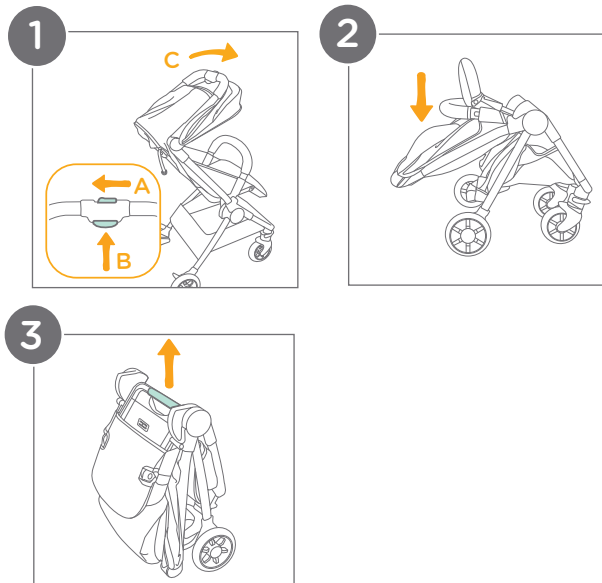
Hear or feel a **CLICK** to confirm that the handlebar is locked into one of the positions.

IMPORTANT: Moving the handlebar too far forward while having both buttons engaged will initiate folding.

Folding Stroller:

IMPORTANT: ALWAYS close the canopy and disengage the front swivel locks before folding the stroller.

- 1 - Slide and hold the secondary lock release button (A). Squeeze the one-hand-fold button (B) while moving the handlebar forward (C) so it folds into the seat back.
- 2 - Push gently downward on the seat back and the stroller will fold automatically.
- 3 - Lift the stroller by the carry handle to complete the fold.



Care & Maintenance:

Cleaning:

Seat pad: Spot clean with a sponge and soapy water.

Stroller frame: Wipe clean with a solution of warm water and mild household soap. Avoid bleach and harsh detergents.

Plastic parts: Periodically wipe clean with a damp cloth.

Metal parts: After contact with water, thoroughly dry the metal parts to prevent rust.

Maintenance:

Regular inspection: Check the stroller regularly for loose or missing parts. Discontinue use if parts are loose or missing.

Worn parts: Replace any worn or damaged parts. Use only Joie replacement parts.

Torn material or stitching: Repair or replace torn fabric or stitching. Use only Joie replacement fabrics.

Care & Maintenance:

Contact Joie Consumer Service at:

Email: info.us@joiebaby.com

Phone: 1-866-798-7866

Storage:

Extreme weather exposure: Avoid excessive sun or heat exposure to prevent fading or warping of parts. Avoid storing outside or in cold conditions.

Drying after use: If the stroller gets wet, open the canopy and allow it to dry completely before storing.

Wheel Maintenance:

Squeaking wheels: Apply a light coat of lubricating oil (e.g., silicone spray, anti-rust oil, or sewing machine oil) directly to the axle and wheel assembly to eliminate squeaking.

Beach Use:

After beach use: Thoroughly clean the stroller to remove sand and salt from the mechanisms and wheels. This helps to prevent rust.

Joie™

Effortlessly happy.

Helping parents be their best
with worry-free baby gear.