

Joie™

Instruction Manual

pepper™ spin SI

4-in-1 360° rotating car seat

Height: up to 60 in. (152 cm)

Weight: 4 to 120 lb. (1.8 to 54 kg)



watch my



install videos

IMPORTANT!

Read all instructions before assembling and using the car seat.
Keep instructions for future use.

Contents:

3	Important	Welcome to the Joie Family! If You Need Help Register Your Child Restraint
5	Child Requirements	
6	Warnings	
14	Best Practices	
15	Vehicle Compatibility	
16	Vehicle Belts	
18	Choose Your Installation	LATCH Install Vehicle Belt Install
20	Rear-Facing and Forward-Facing Requirements	
22	Highback and Backless Booster Requirements	
24	Parts List	
26	Adjusting Headrest Height	
30	Adjusting Crotch Buckle	
34	Adjusting Recline	
36	Removing Infant Insert	
38	Removing Side Impact Bolster	
40	Rear-Facing (RF) - Install Using Lower Anchor Attachments	
46	Rear-Facing (RF) - Install Using Lap/Shoulder Belt	
50	Rear-Facing (RF) - Install Using Lap Belt ONLY	
54	Rear-Facing (RF) - Securing Child in Seat	
60	Forward-Facing (FF) - Install Using Lap/Shoulder Belt and Tether	
64	Forward-Facing (FF) - Install Using Lap Belt ONLY and Tether	
68	Forward-Facing (FF) - Securing Child in Seat	
74	Storing LATCH	
76	Highback Booster - Install	
80	Highback Booster - Securing Child in Seat	
82	Backless Booster - Install/Use	
90	Reattaching Backless Booster	
92	Removing Softgoods	
98	Using Cup Holders	
100	Care and Maintenance	

Color Key: ■ Rear-Facing ■ Forward-Facing ■ Booster

Important:

Welcome to the Joie Family!

Ensure your child's safety – **READ THIS MANUAL CAREFULLY!**

Although no child restraint can promise to protect in every situation, using it correctly reduces the chance of serious injury. Even if the child restraint seems easy, follow the step-by-step instructions in this book.

Store this instruction manual in the compartment located on the back of the child restraint or the underside of the backless booster.

If You Need Help

If you have questions in the U.S.A. about parts, use, or maintaining your child restraint, contact our Consumer Service Department for assistance. To ensure a speedy response, please have your child restraint's model number and date of manufacture ready. You can find the information on a sticker located on the back of the child restraint base.

Joie Baby USA Consumer Service Contact Info.

Address: 70 Thousand Oaks Blvd., Morgantown, PA 19543

Email: info.us@joiebaby.com

Phone: 1-866-798-7866

Important:

Register this Child Restraint

Child restraints could be recalled for safety reasons. You must register this restraint to be reached in a recall. Send your name, address, e-mail address if available, and the restraint's model number and manufacturing date to **70 Thousand Oaks Blvd., Morgantown, PA 19543** or call **1-866-798-7866** or register online at:

www.joiebaby.com/us/register-car-seat

For recall information, call the U.S. Government's Vehicle Safety Hotline at **1-888-327-4236 (TTY: 1-800-424-9153)** or go to <http://www.NHTSA.gov>.

For future reference, record the following information about your child restraint in case you move, lose your registration card, or need to reference it for any reason. You can find this information on the registration card or on the label located on the back of the child restraint:

Model Name:

Model Number:

Date of Manufacture:

Date of Purchase:

Child Requirements:

This child restraint is for a child that meets **BOTH** of the following requirements:

Height: up to 60 in. (152 cm)

Weight: 4 to 120 lb. (1.8 to 54 kg)

STOP using this child restraint as soon as the child reaches the max. weight OR the max. height.

According to accident statistics, children are safer when properly restrained in the rear seating positions than in the front seating positions. **Children should ride rear-facing as long as possible.**

Preterm or Low Birth Weight Infants

To ensure the safety of your preterm or low birth weight infant (born before 37 weeks or weighing less than 5 lb. (2.3 kg)), Joie recommends following the AAP's guidelines and consulting your doctor or hospital staff before the child's first car trip.

A medical evaluation is crucial to check for breathing and heart rate concerns when traveling in a rear-facing child restraint.

For additional information or to have your child restraint inspected by a certified professional, you can visit the Safe Kids Worldwide website at www.safekids.org.

WARNING

DEATH OR SERIOUS INJURY can occur if you fail to follow the warnings, instructions, and labels on the child restraint.

- Read **ALL INSTRUCTIONS** before use of the child restraint.
- Read the vehicle owner's manual for information on child restraint installation.
- **KEEP INSTRUCTIONS FOR FUTURE USE.**
- Failure to follow these instructions and the child restraint's labels can result in the child striking the vehicle's interior during a sudden stop or crash.
- **DO NOT** allow anyone who has not read the instruction manual to install or use this child restraint.
- **DO NOT** place the rear-facing child restraint on the front seat with the air bag. **DEATH OR SERIOUS INJURY CAN OCCUR.** The back seat is the safest place for children 12 and under.



WARNING

DEATH OR SERIOUS INJURY can occur if you fail to follow the warnings, instructions, and labels on the child restraint.

- Your child's safety is your responsibility. **NEVER** leave your child unattended.
- If an air bag inflates, it can hit the child and the child restraint with great force and cause serious injury or death to your child. Review your vehicle owner's manual for more information about air bags and child restraint use.
- Use this child restraint **ONLY** with a child that weighs between 4 - 120 lb. (1.8 - 54 kg) and whose height is 60 in. (152 cm) or less.
- Stop using this child restraint as soon as the child reaches the max. weight **OR** the max. height.
- This child restraint is certified for use only in passenger vehicles. This child restraint is **NOT** certified for aircraft use, as aircraft belts will not accommodate proper installation of this child restraint.



WARNING

DEATH OR SERIOUS INJURY can occur if you fail to follow the warnings, instructions, and labels on the child restraint.

- **NEVER** secure this child restraint using an inflatable seat belt. Move it to a vehicle seat that does not have an inflatable seat belt or install using lower anchors.
- **NEVER** use lower anchors (LATCH) for children weighing more than 30 lb. (14 kg).
- Before each use, **ALWAYS** check the child restraint to ensure that it is tightly secured to the vehicle seat.
- **DO NOT** remove the LATCH system from the child restraint.
- **Car Seat with Harness:**
DO NOT use the lower anchors when using the vehicle seat belt for install.
- **Highback Booster Mode:**
Lower anchors may be used to secure the seat in place.

WARNING

DEATH OR SERIOUS INJURY can occur if you fail to follow the warnings, instructions, and labels on the child restraint.

- The vehicle seat belt system **MUST** hold the child restraint securely. Not all vehicle seat belts can be used with this child restraint.
- **NEVER** modify any part of the child restraint.
- Select a suitable location for the child restraint in your vehicle. Secure the child restraint with a vehicle seat belt or lower anchor attachments that are properly routed as shown in this manual.
- **NEVER** attach two lower anchor attachments to one vehicle lower anchor point unless specifically allowed by the vehicle manufacturer.
- The rear-facing child restraint **MUST** be properly leveled. An improperly reclined child restraint can result in breathing difficulties, injury, or ejection.

WARNING

DEATH OR SERIOUS INJURY can occur if you fail to follow the warnings, instructions, and labels on the child restraint.

- **DO NOT** allow the child restraint to contact the vehicle interior (the side of the car door or the seat in the front).
- **DO NOT** use the child restraint if it has frayed or cut harness straps or is damaged in any way. To find out if damaged parts are replaceable, call 1-866-798-7866.
- **DO NOT** use the child restraint if it is damaged or broken or if parts are missing.
- **DO NOT** use this car seat for children that have implanted electronic medical devices. The magnetic locking mechanism on the chest clip can potentially disrupt the proper function of implanted electronic devices.

WARNING

DEATH OR SERIOUS INJURY can occur if you fail to follow the warnings, instructions, and labels on the child restraint.

- The side impact bolster **MUST** be used with children weighing under 40 lb. (18 kg).
- The infant insert **MUST** be removed for children weighing over 11 lb. (5 kg).
- According to accident statistics, children are safer when properly restrained in rear seating positions than in front seating positions.
- If your vehicle does not have a back seat, review your vehicle owner's manual.
- **DO NOT** attach additional padding, toys, or other devices unless made by Joie Baby and described in these instructions. Use **ONLY** approved accessories. Unapproved items can injure your child and may void the warranty.
- **NEVER** leave the child restraint unsecured in your vehicle, even when it is unoccupied. In a crash, it could become a projectile and injure other vehicle occupants.

WARNING

DEATH OR SERIOUS INJURY can occur if you fail to follow the warnings, instructions, and labels on the child restraint.

- **ALWAYS** make sure the turn lock indicator is fully green while the vehicle is in motion, even when the child is not in the seat.
- **NEVER** rotate the child restraint while the vehicle is in motion.
- **NEVER** use clothing or blankets that interfere with providing a properly tightened harness. An unsecured or improperly harnessed child can come out of the restraint during a crash.
- Place blankets over the child **AFTER** the harness has been properly tightened.

This child restraint system conforms to all applicable Federal Motor Vehicle Safety Standards.

WARNING

NEVER use a child restraint that has been involved in a **MODERATE** or **SEVERE** crash.

Even if there is no visible damage, the child restraint's internal structure may be compromised and may not protect your child in a future crash.

The child restraint is still usable after a minor incident in which all of the following apply:

- 1) The vehicle was able to be driven away from the crash site.
- 2) The vehicle door nearest the child restraint was **NOT** damaged.
- 3) None of the passengers in the vehicle sustained any injuries in the crash.
- 4) If the vehicle has air bags, the air bags did not deploy during the crash; and
- 5) There is no visible damage to the child restraint.

Contact Joie Consumer Service with any questions or concerns.

Best Practices:

Expiration:

DO NOT USE THIS CHILD RESTRAINT 10 YEARS AFTER ORIGINAL PURCHASE.

Stop using it after that date and dispose of it. If the original purchase date is unknown, the manufacture date located on the child restraint should be used.

Hot Weather Warning:

Child restraints can become extremely hot in the sun or warm weather. Always check the seat temperature before placing your child inside to avoid burns.

Clothing:

For proper harness fit and child safety, avoid bulky clothing like heavy jackets or snowsuits when using the child restraint. Ensure that the harness is snug but comfortable on your child.

Fit to Vehicle Seat:

Ensure that the base of the child restraint is at least 80% on the vehicle seat.



Vehicle Compatibility:

You MUST read and understand ALL child restraint-related instructions and warnings in your vehicle owner's manual to correctly and safely use this child restraint in your vehicle.



This child restraint can **ONLY** be installed on vehicle seats that face forward. **DO NOT** install on seats that face to the sides or the rear of the vehicle.



According to accident statistics, children are safer when properly restrained in the rear seating positions than in the front seating positions.

DO NOT place the rear-facing child restraint on the front seat with the air bag. **DEATH OR SERIOUS INJURY CAN OCCUR.** The back seat is the safest place for children 12 and under.



If your vehicle is equipped with front passenger side air bags, check your vehicle owner's manual for child restraint installation instructions.

NEVER attach two lower anchor attachments to one vehicle lower anchor point unless specifically allowed by the vehicle manufacturer.

Car Seat with Harness:

DO NOT use the lower anchors when using the vehicle seat belt for install.

Highback Booster Mode:

Lower anchors may be used to secure the seat in place.

Vehicle Belts:

These vehicle belts **CANNOT BE USED** with your child restraint. Install with LATCH instead.

1 - Motorized Belts (Automatic)

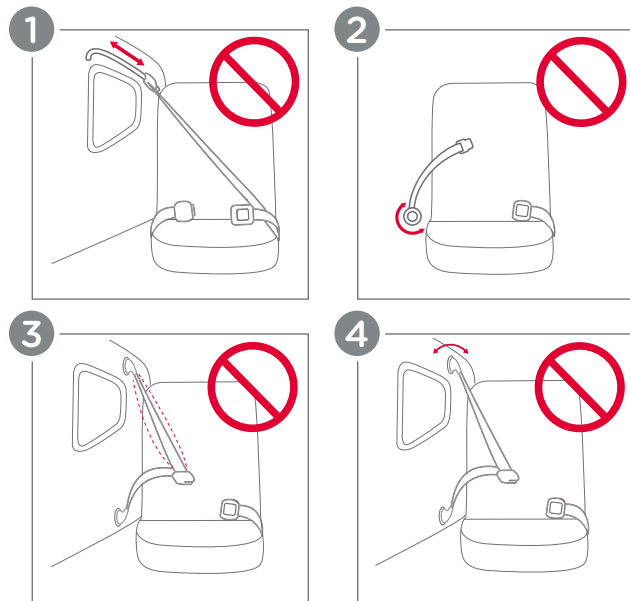
These should not be used unless the shoulder belt can be removed, the lap belt is locked, and use is allowed by the vehicle manufacturer.

2 - Non-Locking (ELR) Lap Belts

This belt only locks in a crash or sudden stop and should only be used with a belt shortening clip.

3 - Airbag/Inflatable Belts

4 - Door Mounted Belts



Choose Your Installation:

This child restraint can be installed in your vehicle using either the vehicle seat belt **OR** lower anchor attachments. Both are safe to use. Use the method that provides the best installation for you and your vehicle.

Car Seat with Harness: **DO NOT** use the lower anchors when using the vehicle seat belt for install.

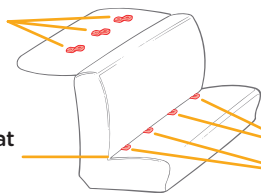
Highback Booster Mode: Lower anchors may be used to secure the seat in place.

LATCH Overview:

LATCH (Lower Anchors and Tethers for Children):

The LATCH system, or lower anchor attachment and top tether, allows you to securely attach your child restraint in your car without using the vehicle seat belt. All 2003 and newer model year vehicles are required to have a LATCH system, although some manufacturers began including LATCH earlier. Some vehicle owner's manuals use the term ISOFIX to identify the LATCH system.

Vehicle's Tether Anchor



Typical seat in a passenger vehicle. Other vehicle types may have different LATCH locations.

Vehicle Seat Bight

LATCH Lower Anchors



Review your vehicle owner's manual for exact location and use.

Vehicle Belt Overview:

Vehicle Seat Belt:

Refer to your vehicle owner's manual to determine if the belts in your vehicle lock by switching the seat belt's retractor **OR** have a locking latch plate that locks the vehicle's seat belt.

Vehicle Seat Belt Terms:

Retractor

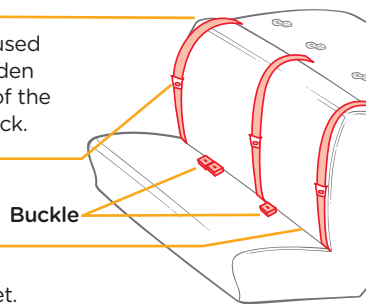
A device that winds up the unused vehicle seat belt. It is often hidden inside the panels on the walls of the vehicle or in the vehicle seatback.

Latch Plate

The male end of the seat belt with the metal tongue.

Seat Bight

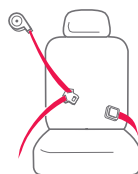
The crease where the vehicle seatback and seat bottom meet.



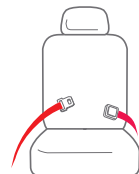
Review your vehicle owner's manual for exact location and use.

Identify Your Seat Belt Type:

The vehicle seat belt types that can be used with this child restraint.

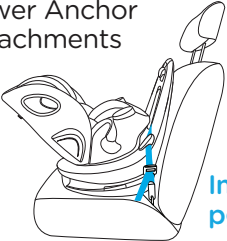
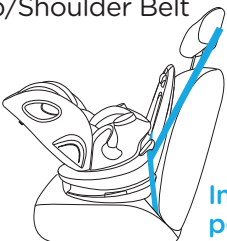



Lap/Shoulder Belt
3 connection points

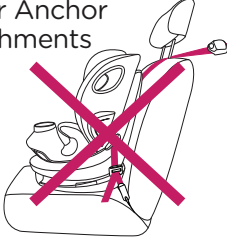
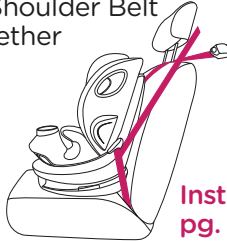



Lap Belt Only
2 connection points

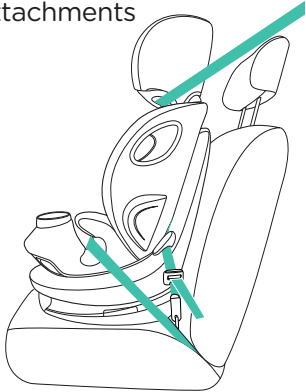
Rear-Facing Requirements:

Installation Method	Suitable For
<p>Lower Anchor Attachments</p>  <p>Install pg. 40</p>	<p>Height: less than 43 in. (110 cm)</p> <p>Weight: 4 - 40 lb. (1.8 - 18 kg)</p>
<p>Lap/Shoulder Belt</p>  <p>Install pg. 46</p>	<p>Children should ride rear-facing as long as possible.</p> <p>WARNING! DO NOT use the tether when installing rear-facing.</p>
<p>Lap Belt ONLY</p>  <p>Install pg. 50</p>	<p>WARNING! NEVER use lower anchors for children weighing more than 30 lb. (14 kg).</p>


Forward-Facing Requirements:

Installation Method	Suitable For
<p>Lower Anchor Attachments</p> 	<p>DO NOT install using lower anchor attachments when forward-facing.</p>
<p>Lap/Shoulder Belt and Tether</p>  <p>Install pg. 60</p>	<p>Height: less than 49 in. (125 cm)</p> <p>Weight: 30 - 65 lb. (14 - 30 kg)</p>
<p>Lap Belt ONLY and Tether</p>  <p>Install pg. 64</p>	<p>Child must be able to sit upright unassisted and must be at least 1 year old.</p>

Highback Booster Requirements:

Installation Method	Suitable For
<p>Lap/Shoulder Belt with Lower Anchor Attachments</p>  <p>Install pg. 76</p>	<p>Height: less than 57 in. (145 cm)</p> <p>Weight: 40 - 100 lb. (18 - 45 kg)</p> <p>At least 4 years old</p> <p>Children over 65 lb. (30 kg) who are at least 4 years old MUST be in booster mode.</p> <p>Check your local and state laws and the AAP/NHTSA recommendations.</p> <p>Lower anchor attachments may be used to secure the seat in place.</p>

Backless Booster Requirements:

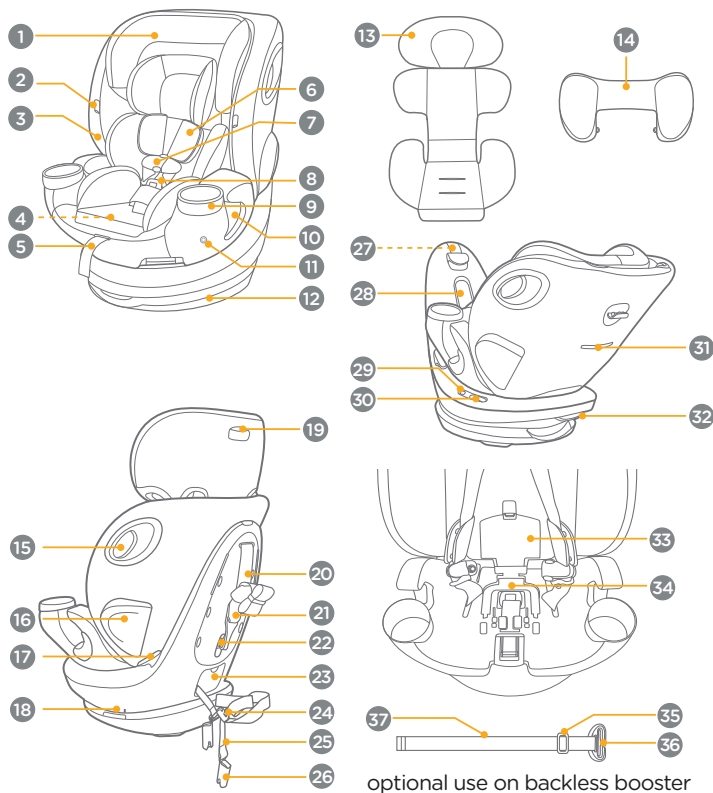
Installation Method	Suitable For
<p>Lap/Shoulder Belt</p>  <p>Install pg. 82</p>	<p>Height: 43 - 60 in. (110 - 152 cm)</p> <p>Weight: 50 - 120 lb. (23 - 54 kg)</p> <p>At least 4 years old</p> <p>Children over 65 lb. (30 kg) who are at least 4 years old MUST be in booster mode.</p> <p>Check your local and state laws and the AAP/NHTSA recommendations.</p>

Parts List:

Please make sure there are no missing parts. Please contact Joie Consumer Service if anything is missing.

- 1 Headrest
- 2 Harness Buckle Holder (x2)
- 3 Seat Pad
- 4 Harness Adjustment Button
- 5 Harness Adjustment Strap
- 6 Harness Pad (x2)
- 7 Magnetic Chest Clip
- 8 Crotch Buckle
- 9 Cup Holder (x2)
- 10 Booster Lower Belt Guide (x2)
- 11 Cup Holder Release Button (x2)
- 12 Child Restraint Foot
- 13 Infant Insert (2 pieces), optional up to 11 lb. (5 kg)
- 14 Side Impact Bolster, required up to 40 lb. (18 kg)
- 15 Rotation Lever (x2)
- 16 Side Impact Pod (x2)
- 17 Lower Anchor Attachment Strap Guide/Vehicle Belt Guide (x2)
- 18 Recline Position Indicator
- 19 Headrest Adjustment Lever
- 20 Tether Strap
- 21 Tether Strap Adjuster
- 22 Tether Storage Clip
- 23 Lower Anchor Attachments Storage Door
- 24 Lower Anchor Attachment Strap Adjuster
- 25 Lower Anchor Attachment Strap
- 26 Lower Anchor Attachment (x2)
- 27 Lock-Off Bar Release Button
- 28 Lock-Off Bar
- 29 Turn Lock Indicator
- 30 Level Indicator
- 31 Instruction Manual Storage
- 32 Recline Adjustment Lever
- 33 Harness Storage Door
- 34 Backless Booster Release Handle
- 35 Shoulder Belt Positioning Strap Adjuster
- 36 Shoulder Belt Positioning Clip
- 37 Shoulder Belt Positioning Strap

Parts List:



optional use on backless booster

Adjusting Headrest Height:

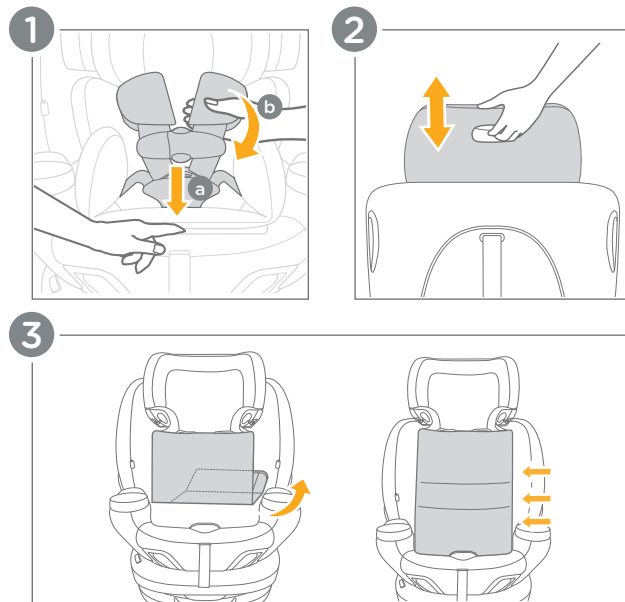
For safety and comfort, ensure that the harness straps fit snugly on your child's shoulders and are adjusted to the proper height stated below.

1 - Locate the harness adjustment button inside the slot above the harness adjustment strap (a). Press it down while pulling the shoulder harnesses (b) outward to loosen.

2 - Locate the headrest adjustment lever and squeeze it while moving the headrest up or down until it locks into one of the 15 available positions.

3 - The headrest back fabric has 3 folding positions. After adjusting the headrest, fold or unfold the back fabric to provide proper support.

(Adjusting Headrest Height continued on pg. 28)



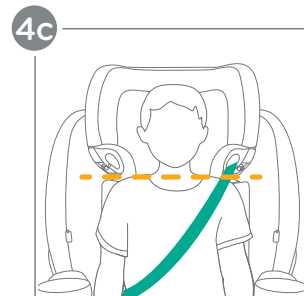
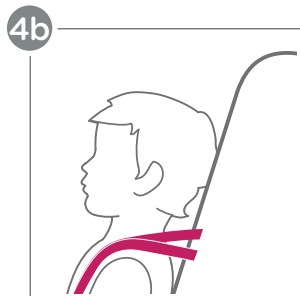
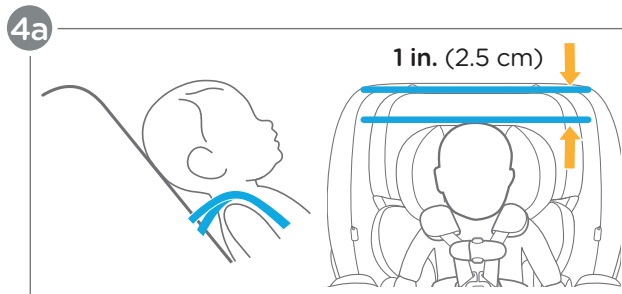
Adjusting Headrest Height: (cont.)

4 - Place your child in the child restraint and adjust the headrest for the correct adjustment for your installation:

a. Rear-Facing: The harness straps **MUST** be **AT** or **JUST BELOW** the child's shoulders, and the top of child's head **MUST** be at least 1 in. (2.5 cm) **BELOW** the top of the child restraint.

b. Forward-Facing: The harness straps **MUST** be **AT** or **JUST ABOVE** the child's shoulders.

c. Highback Booster: The belt guides **MUST** be **AT** or **JUST ABOVE** the child's shoulders.

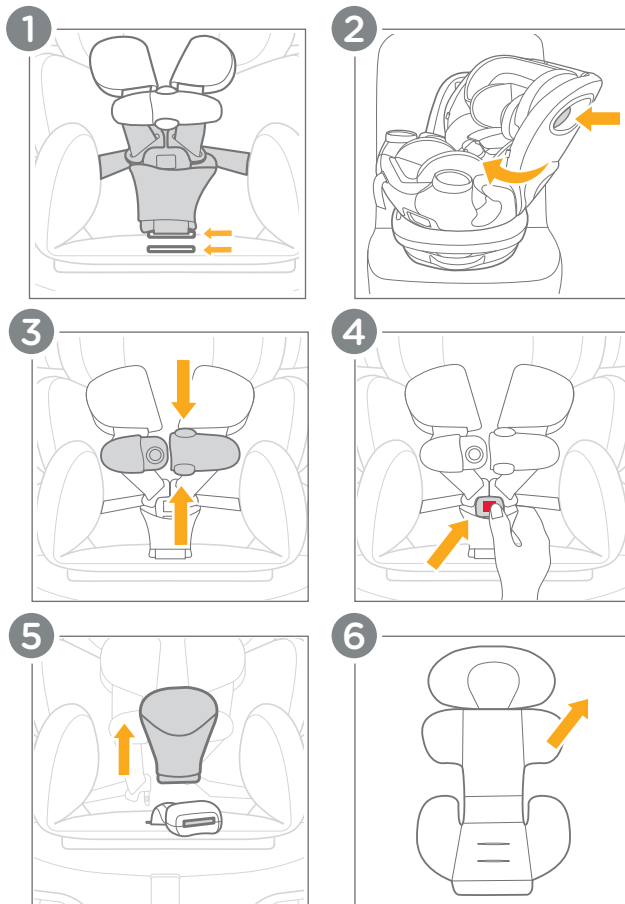


Adjusting Crotch Buckle:

The crotch buckle with strap has two positions. Use the position that is closest to (but not under) your child.

- 1 - Choose the proper crotch buckle opening.
- 2 - To change positions, rotate the seat to the side for easier access.
- 3 - Unbuckle the harness by pressing the release buttons on the chest clip.
- 4 - Press the release button to remove the buckle tongues from the crotch buckle.
- 5 - Remove the crotch pad.
- 6 - Gently pull the infant insert upwards. Slide off the sleeve that covers the side impact bolster, then thread the crotch buckle through the infant insert to remove it.

(Adjusting Crotch Buckle continued on pg. 32)



Adjusting Crotch Buckle: (cont.)

7 - Unbutton the side impact bolster from the seat pad on both sides.

8 - Pull the seat pad forward (a). Pull up gently on the side impact bolster to remove it (b).

9 - Keeping the seat pad forward, locate the crotch buckle adjustment slots in the seat shell and squeeze/pinch the sides of the crotch buckle strap together.

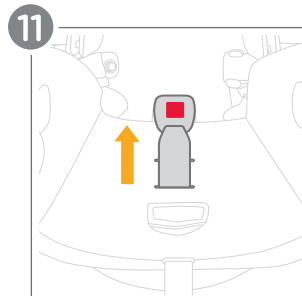
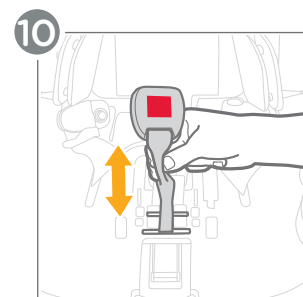
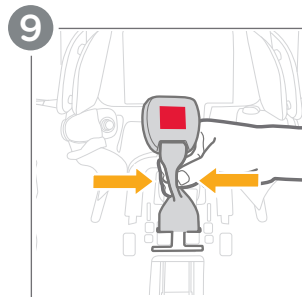
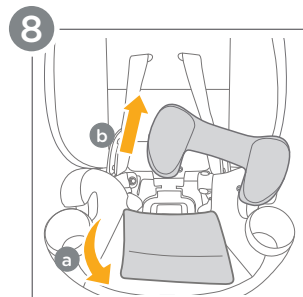
10 - Twist and slide the crotch buckle and strap forward or backward into the desired slot to best fit your child.

11 - Thread the crotch buckle and strap back up through the seat fabric in the corresponding slot. Push the seat pad back into place.

Reassemble the crotch pad, side impact bolster, and infant insert (if being used).

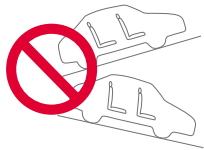
WARNING! ALWAYS ensure that the crotch buckle strap is NOT twisted and the crotch buckle button is facing outward.

IMPORTANT: ALWAYS ensure that the crotch buckle strap is properly secured by pulling up on the crotch buckle.

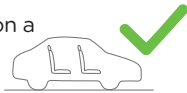


Adjusting Recline:

ALWAYS adjust the recline when installing **Rear-Facing** or **Forward-Facing**.



Make sure the vehicle is on a flat and **LEVEL** surface.



NEVER adjust the recline when the vehicle is on an incline.

1 - Squeeze the rotation lever and turn the child restraint seat to either rear-facing or forward-facing based on your installation choice. Then place the child restraint on your vehicle seat.

2 - The recline can be adjusted by squeezing the recline adjustment lever and pulling or pushing the seat into the desired position.

3 - This child restraint has 4 recline positions that can be used for either rear-facing or forward-facing.

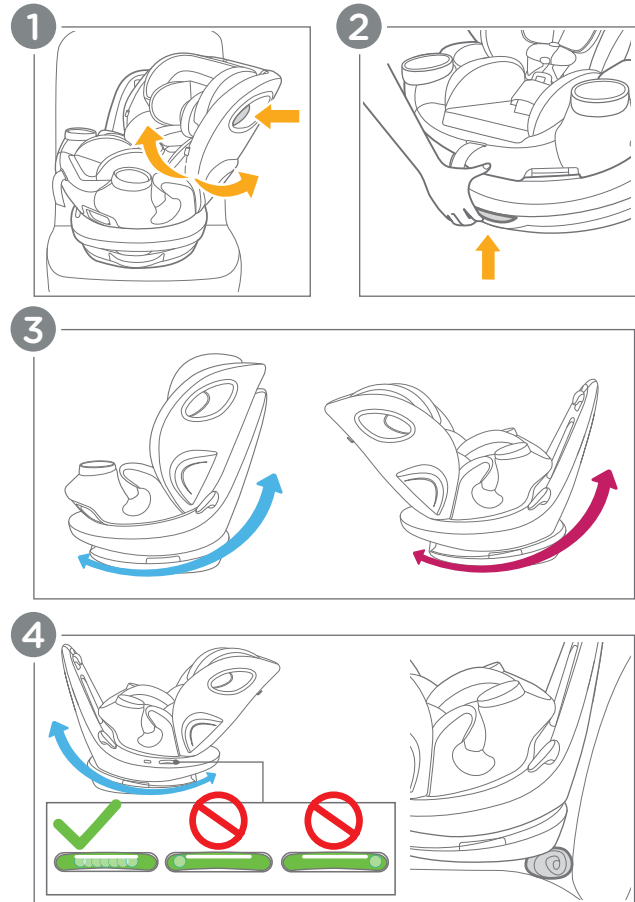
IMPORTANT: For all recline positions, ensure that the child restraint foot lays flat on the vehicle seat.

4 - When installing Rear-Facing OR Forward-Facing: The bubble indicator on the child restraint window must be **FULLY** within the **WHITE** line when placed on the vehicle seat.

When **Rear-Facing**, a rolled-up towel or pool noodle may be used to further adjust the recline of the child restraint.

When installing with a **LAP BELT ONLY**, **ONLY** use the **MOST RECLINED** position that keeps the bubble fully within the white line.

If adjusting the recline after installation, check that your installation is still correct and snug to the vehicle seat.



Removing Infant Insert:

The infant insert can be used, as needed, to provide a snug fit for small babies.

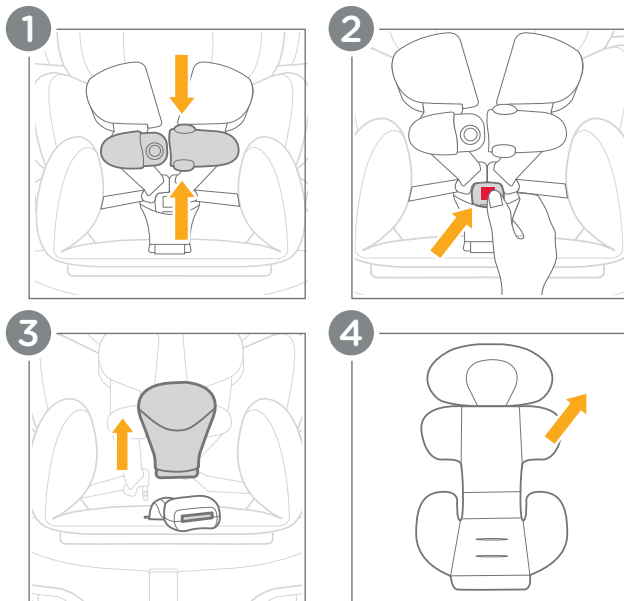
- 1 - Unbuckle the harness by pressing the release buttons on the chest clip.
- 2 - Press the release button to remove the buckle tongues from the crotch buckle.
- 3 - Remove the crotch pad.
- 4 - Gently pull the infant insert upwards. Slide off the sleeve that covers the side impact bolster, then thread the crotch buckle through the infant insert to remove it.

Reassemble the crotch pad (if being used).

IMPORTANT: The infant insert can be used for smaller babies, but **MUST** be removed once the child reaches 11 lb. (5 kg).

IMPORTANT: **NEVER** use the infant insert when forward-facing.

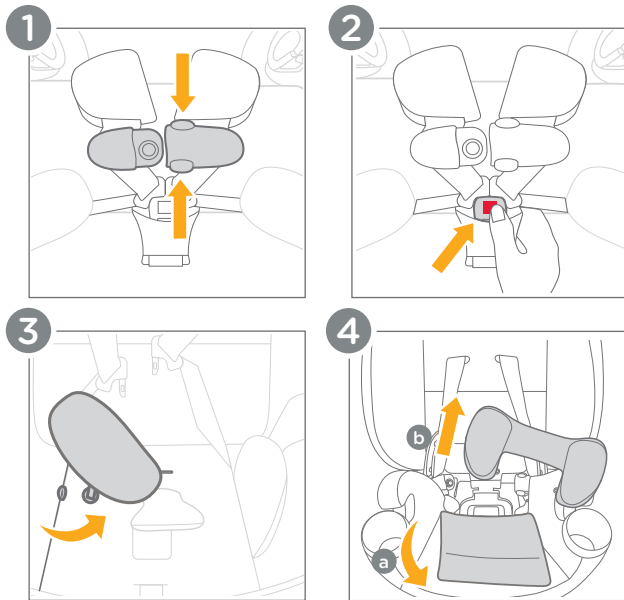
IMPORTANT: **NEVER** allow the infant insert to bunch or fold behind the child.



Removing Side Impact Bolster:

IMPORTANT: The side impact bolster **MUST** be used with children weighing under 40 lb. (18 kg).

- 1** - Unbuckle the harness by pressing the release buttons on the chest clip.
- 2** - Press the release button to remove the buckle tongues from the crotch buckle.
- 3** - Unbutton the side impact bolster from the seat pad on both sides.
- 4** - Pull the seat pad forward (a). Pull up gently on the side impact bolster to remove it (b).



RF - Install Using Lower Anchor Attachments:

WARNING! DO NOT install by this method for a child weighing more than 30 lb. (14 kg).

WARNING! DO NOT use the tether when installing rear-facing.

INSTALL USING ONLY ONE METHOD.

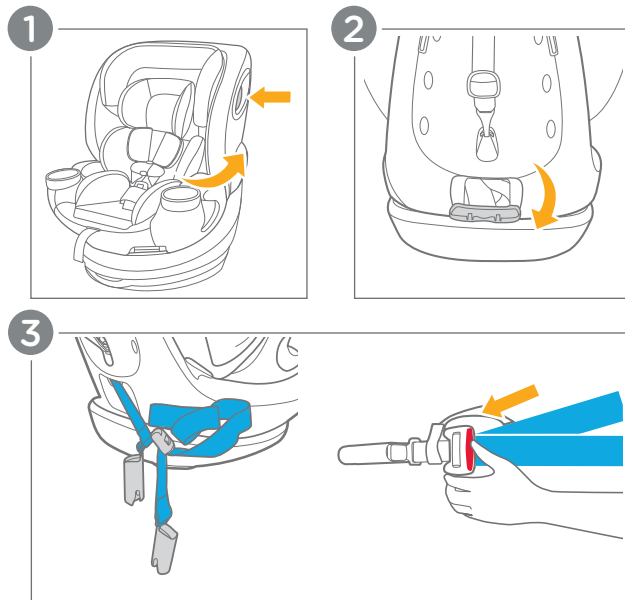
NEVER install using BOTH the seat belt and the lower anchors.

ONLY install on a forward facing vehicle seat.

BEFORE INSTALLING, refer to adjusting the recline on pg. 34 and properly storing the tether on pg. 74.

- 1 - Rotate the child restraint seat to the rear-facing position.
- 2 - Open the lower anchor attachments storage door on the back of the child restraint base.
- 3 - Remove the lower anchor attachments that are secured permanently to the seat. Then press the button on the lower anchor attachment strap adjuster and pull to extend the lower anchor attachment strap to its full length.

(RF - Install Using Lower Anchor Attachments continued on pg. 42)




RF - Install Using Lower Anchor Attachments: (cont.)

4 - Press the lock-off bar release button to open the lock-off bar on the child restraint base.

5 - Thread the lower anchor attachment strap through the belt path inside the lock-off bar and **UNDERNEATH BOTH** lower anchor attachment strap guides.

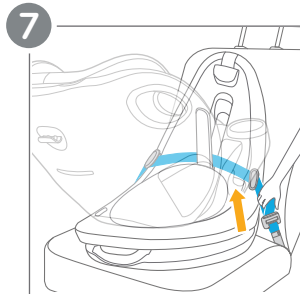
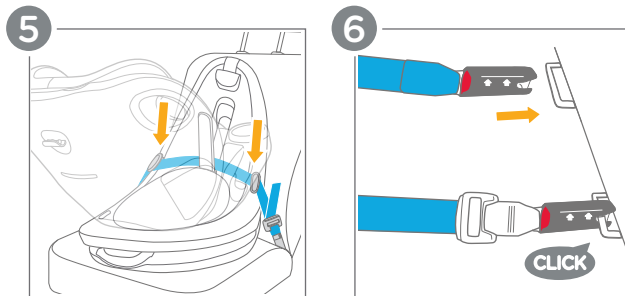
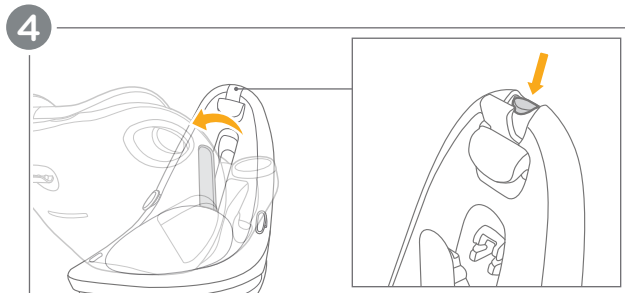
6 - Attach **BOTH** lower anchor attachments to the correct lower anchor points in your vehicle. Listen for a **CLICK**.

 The arrows on the sides of the lower anchor attachments should be pointing upwards. Refer to your vehicle owner's manual for specific lower anchor locations.

7 - Tighten the lower anchor attachment strap by pulling the loose end of the webbing. Push the child restraint down firmly while tightening to remove any slack in the strap.

IMPORTANT: Ensure that the lower anchor attachment strap is not twisted and lies flat against the child restraint base.

(RF - Install Using Lower Anchor Attachments continued on pg. 44)



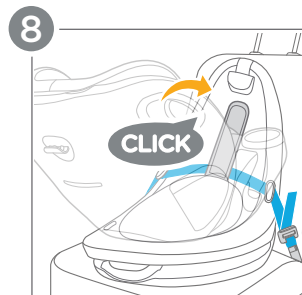
RF - Install Using Lower Anchor Attachments: (cont.)

8 - Once the lower anchor attachment strap is tight, close the lock-off bar. Listen for a **CLICK**. Keep your hands clear of the lock-off area while closing it.

After installing your child restraint, continue on to [Rear-Facing Securing Child in Seat](#) on pg. 54.

Check Install!

- The lock-off bar is securely locked.
- The bubble indicator on the child restraint window is **FULLY** within the **WHITE** line.
- The lower anchor attachments are properly attached and the lower anchor attachment strap is not loose or twisted.
- The child restraint should be snug and **NOT MOVE** in any direction more than 1 in. (2.5 cm) **AT THE BELT PATH**.



RF - Install Using Lap/Shoulder Belt

WARNING! DO NOT use the tether when installing rear-facing.

INSTALL USING ONLY ONE METHOD.

NEVER install using **BOTH** the seat belt and the lower anchors.

ONLY install on a forward facing vehicle seat.

BEFORE INSTALLING, refer to **adjusting the recline on pg. 34** and **properly storing the tether on pg. 74**.

1 - Rotate the child restraint seat to the rear-facing position.

2 - Press the lock-off bar release button to open the lock-off bar on the child restraint base.

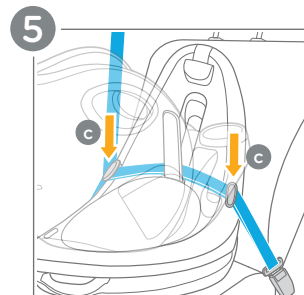
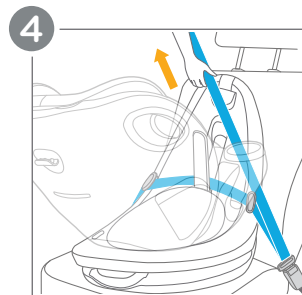
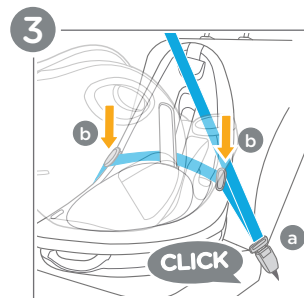
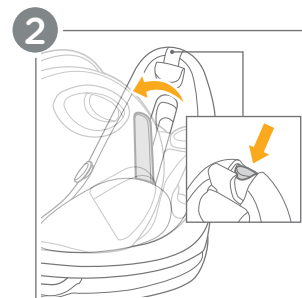
3 - Thread the lap/shoulder belt through the belt path inside the lock-off bar and buckle the lap/shoulder belt (a). Then route the lap belt **UNDER BOTH** vehicle belt guides (b).

4 - Tighten the lap/shoulder belt by pushing the child restraint down firmly while pulling up on the shoulder belt to remove any slack in the belts.

5 - Route the shoulder belt **UNDER BOTH** vehicle belt guides (c).

(RF - Install Using Lap/Shoulder Belt continued on pg. 48)

IMPORTANT: Ensure that the vehicle belt is not twisted and lies flat against the child restraint base.

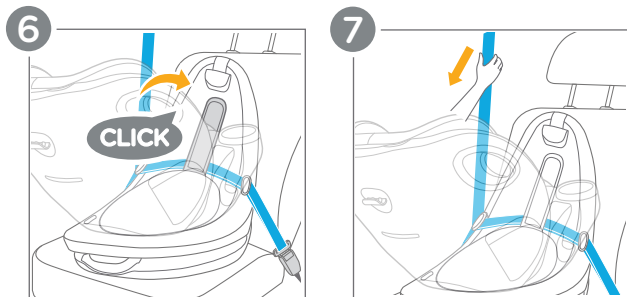


RF – Install Using Lap/Shoulder Belt: (cont.)

6 - Close the lock-off bar. Listen for a **CLICK**. Keep your hands clear of the lock-off area while closing it.

7 - After installation, **Joie recommends** fully extending the shoulder belt to engage the locking retractor. If your vehicle lacks a switchable retractor (see vehicle manual), the seat will still be safely installed without locking the belt.

After installing your child restraint, continue on to **Rear-Facing Securing Child in Seat** on pg. 54.



Check Install!

- The lock-off bar is securely locked.
- The bubble indicator on the child restraint window is **FULLY** within the **WHITE** line.
- The vehicle belt is buckled and is as tight as possible around the child restraint. The vehicle belt is not loose or twisted.
- The child restraint should be snug and **NOT MOVE** in any direction more than 1 in. (2.5 cm) **AT THE BELT PATH**.

RF – Install Using Lap Belt ONLY:

WARNING! DO NOT use the tether when installing rear-facing.

INSTALL USING ONLY ONE METHOD.

NEVER install using **BOTH** the seat belt and the lower anchors.

ONLY install on a forward facing vehicle seat.

BEFORE INSTALLING, refer to **adjusting the recline** on pg. 34 and **properly storing the tether** on pg. 74.

When installing with a **LAP BELT ONLY**, **ONLY** use the **MOST RECLINED** position that keeps the bubble fully within the white line.

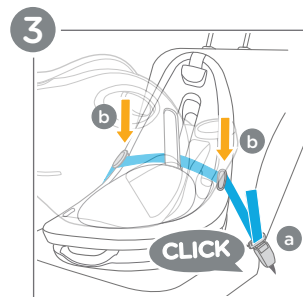
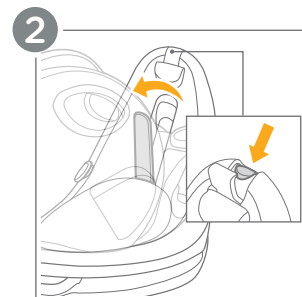
1 - Rotate the child restraint seat to the rear-facing position.

2 - Press the lock-off bar release button to open the lock-off bar on the child restraint base.

3 - Thread the lap belt through the belt path inside the lock-off bar and buckle the lap belt (a). Then route the lap belt **UNDER BOTH** vehicle belt guides (b).

IMPORTANT: Ensure that the vehicle belt is not twisted and lies flat against the child restraint base.

(RF – Install Using Lap Belt ONLY continued on pg. 52)

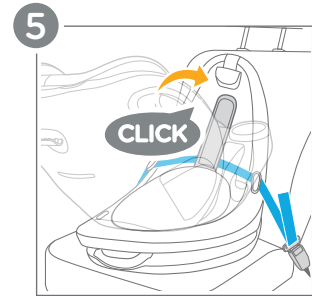
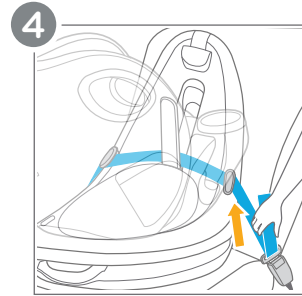


RF – Install Using Lap Belt ONLY: (cont.)

4 - Tighten the lap belt. Push the child restraint down firmly while tightening to remove any slack in the belt.

5 - Once the lap belt is tight, close the lock-off bar. Listen for a **CLICK**. Keep your hands clear of the lock-off area while closing it.

After installing your child restraint, continue on to [Rear-Facing Securing Child in Seat](#) on pg. 54.



Check Install!

- The lock-off bar is securely locked.
- The bubble indicator on the child restraint window is FULLY within the WHITE line.
- The vehicle belt is buckled and is as tight as possible around the child restraint. The vehicle belt is not loose or twisted.
- The child restraint should be snug and NOT MOVE in any direction more than 1 in. (2.5 cm) AT THE BELT PATH.

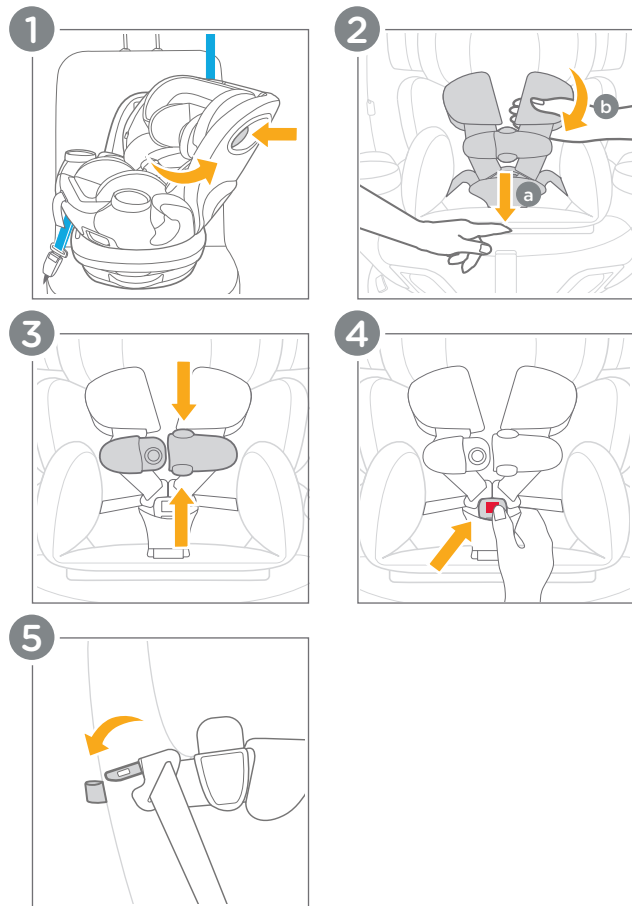
RF - Securing Child in Seat:

IMPORTANT: DO NOT use snowsuits or bulky garments when placing your child in the seat. They can prevent the harness straps from being tightened properly. To keep your child warm, buckle them first, then use a blanket or backwards coat.

- 1 - Squeeze the rotation lever and turn the child restraint seat to the side position for easier access.
- 2 - Locate the harness adjustment button above the slot at the harness adjustment strap (a). Press it down while pulling the shoulder harnesses (b) outward to loosen.
- 3 - Unbuckle the harness by pressing the release buttons on the chest clip.
- 4 - Press the release button to remove the buckle tongues from the crotch buckle.
- 5 - Spread apart the harness straps and insert the buckle tongues into the harness buckle holders on either side of the child restraint to keep the harness straps out of the way. Place your child into the child restraint and gently guide the child's arms through the harness straps.

IMPORTANT: The child must be in a seated position against both the back and bottom of the seat with no gap behind the child. DO NOT allow the child to slouch.

(RF - Securing Child in Seat continued on pg. 56)



RF - Securing Child in Seat: (cont.)

6 - The top of the child's head **MUST** be at least 1 in. (2.5 cm) below the top of the child restraint and the harness straps **MUST** be **AT** or **JUST BELOW** the child's shoulders to avoid injury. **If NOT, please refer to Adjusting Headrest Height on pg. 26.**


7 - Insert the buckle tongues into the crotch buckle. Listen for a **CLICK**. Pull on the crotch buckle to ensure that it is properly latched.

8 - Snap the chest clip together. Listen for a **CLICK**. Temporarily slide it down towards the buckle for tightening of the harness straps.

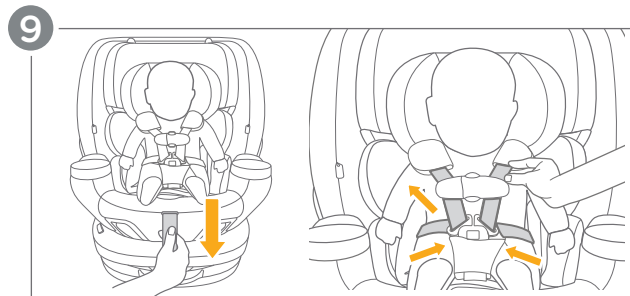
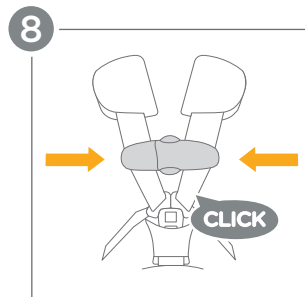
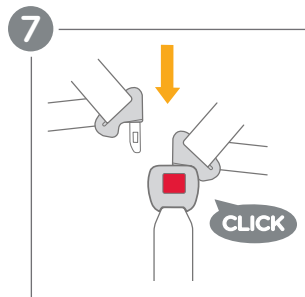
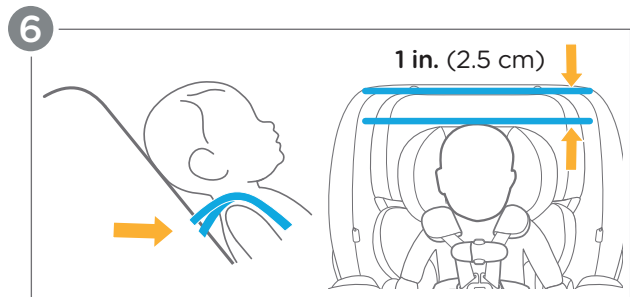
9 - Pull on the harness adjustment strap to tighten the harness. Slide any excess strap length from the child's waist up through the buckle towards the shoulders, and repeat this step until the harness is secure. You should **NOT** be able to vertically pinch the harness straps at the collarbone area.

WARNING! Ensure that nothing interferes with the harness. Ensure that the harness straps are snug around the child and lay flat.

Serious injury or death could occur to a child that is not secured properly. If the child is not secured properly, the child could be ejected in a sudden stop or crash, resulting in serious injury or death.

 The harness should be snug around your child's waist and shoulders. It may take a few adjustments, so be patient!

(RF - Securing Child in Seat continued on pg. 58)



RF - Securing Child in Seat: (cont.)

10 - Without pressing the harness adjustment button, pull forward firmly on the harness straps at the shoulder. If the straps loosen, clean the harness adjustment button and strap (see pg. 97).

11 - Position the chest clip at the child's **ARMPIT LEVEL**.

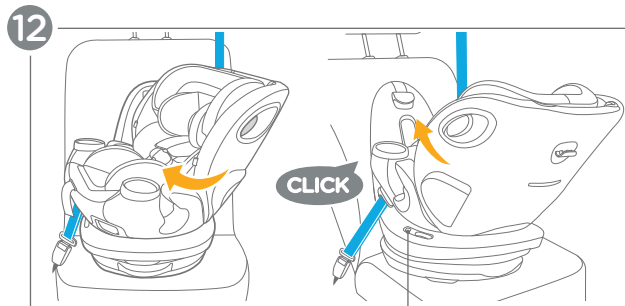
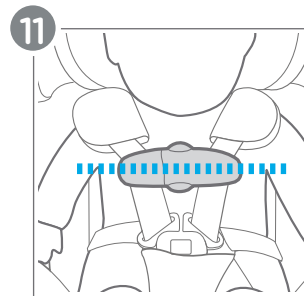
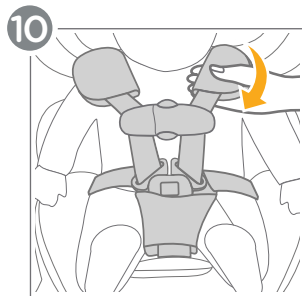
12 - Turn the child restraint seat to the **REAR-FACING** position. Listen for a **CLICK**. Ensure that the turn lock indicator is fully **GREEN**.

Check Setup!

The harness is snug - a snug harness cannot be pinched vertically at the collarbone area, and should not allow any slack. If the harness straps are not snugly adjusted, the child may be ejected from the seat in the event of a crash.

IMPORTANT: A snug strap should not allow any slack. It lies in a relatively straight line without sagging. It does not press on the child's flesh or push the child's body into an unnatural position.

- The chest clip and crotch buckle are secured properly.**
- The chest clip is at the child's armpit level.**
- The child's head is at least 1 in. (2.5 cm) below the top of the headrest.**
- The shoulder straps are AT or JUST BELOW the child's shoulders.**
- The turn lock indicator is showing fully GREEN.**



WARNING! ALWAYS ensure that the turn lock indicator is fully green while the vehicle is in motion, even when the child is not in the seat.

NEVER rotate the child restraint while the vehicle is in motion.

FF - Install Using Lap/Shoulder Belt and Tether:

INSTALL USING ONLY ONE METHOD.

DO NOT install using lower anchor attachments forward-facing.
ONLY install on a forward facing vehicle seat.

BEFORE INSTALLING, refer to **Adjusting Recline** on pg. 34.

1 - Rotate the child restraint seat to the rear-facing position.

2 - Locate the top tether stored on the back of the child restraint base and unhook it from its storage. Loosen the tether strap fully by pulling on the tether strap adjuster (a).

Then place the child restraint on the vehicle seat and lay the tether strap across the back of the vehicle seat.

Check your vehicle owner's manual for proper routing of the tether strap.

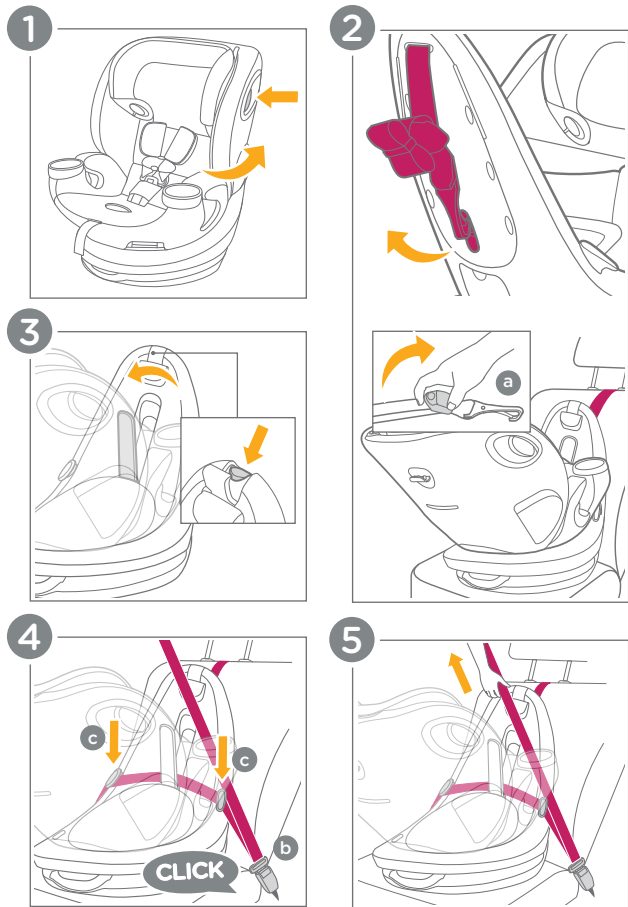
3 - Press the lock-off bar release button to open the lock-off bar on the child restraint base.

4 - Thread the lap/shoulder belt through the belt path inside the lock-off bar and buckle the lap/shoulder belt (b). Then route the lap belt **UNDER BOTH** vehicle belt guides (c).

5 - Tighten the lap/shoulder belt by pushing the child restraint down firmly while pulling up on the shoulder belt to remove any slack in the belts.

IMPORTANT: Ensure that the vehicle belt is not twisted and lies flat against the child restraint base.

(FF - Install Using Lap/Shoulder Belt and Tether
continued on pg. 62)



FF - Install Using Lap/Shoulder Belt and Tether: (cont.)

6 - Route the shoulder belt **UNDER BOTH** vehicle belt guides (a).

7 - Close the lock-off bar. Listen for a **CLICK**. Keep your hands clear of the lock-off area while closing it.

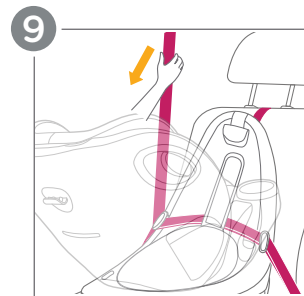
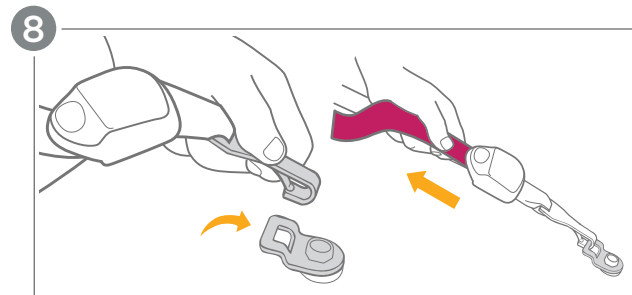
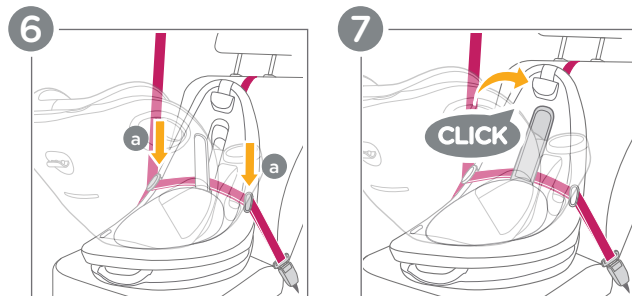
8 - Attach the top tether to your vehicle's tether attachment point. Pull the loose end of the webbing on the tether strap to tighten it. There should be no slack in the strap.

9 - After installation, **Joie recommends** fully extending the shoulder belt to engage the locking retractor. If your vehicle lacks a switchable retractor (see vehicle manual), the seat will still be safely installed without locking the belt.

After installing your child restraint, continue on to **Forward-Facing Securing Child in Seat** on pg. 68.

Check Install!

- The lock-off bar is securely locked and the tether has no slack.
- The bubble indicator on the child restraint window is **FULLY** within the **WHITE** line.
- The vehicle belt is buckled and is as tight as possible around the child restraint. The vehicle belt is not loose or twisted.
- The child restraint should be snug and **NOT MOVE** in any direction more than 1 in. (2.5 cm) **AT THE BELT PATH**.



FF - Install Using Lap Belt ONLY and Tether:

INSTALL USING ONLY ONE METHOD.

DO NOT install using lower anchor attachments forward-facing.
ONLY install in a forward facing vehicle seat.

BEFORE INSTALLING, refer to **Adjusting Recline** on pg. 34.

When installing with a **LAP BELT ONLY**, **ONLY** use the **MOST RECLINED** position that keeps the bubble fully within the white line.

1 - Rotate the child restraint seat to the rear-facing position.

2 - Locate the top tether stored on the back of the child restraint base and unhook it from its storage. Loosen the tether strap fully by pulling on the tether strap adjuster (a).

Then place the child restraint on the vehicle seat and lay the tether strap across the back of the vehicle seat.

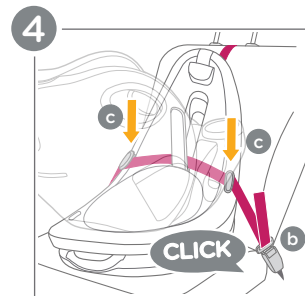
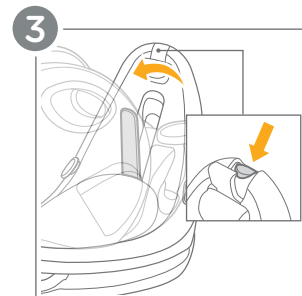
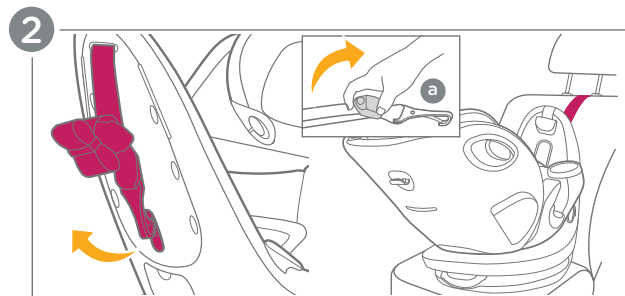
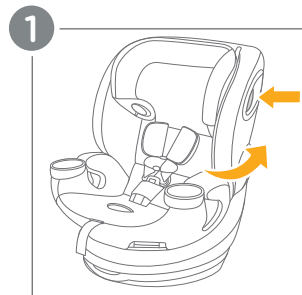
Check your vehicle owner's manual for proper routing of the tether strap.

3 - Press the lock-off bar release button to open the lock-off bar on the child restraint base.

4 - Thread the lap belt through the belt path inside the lock-off bar and buckle the lap belt (b). Then route the lap belt **UNDER BOTH** vehicle belt guides (c).

IMPORTANT: Ensure that the vehicle belt is not twisted and lies flat against the child restraint base.

(FF - Install Using Lap Belt ONLY and Tether continued on pg. 66)



FF - Install Using Lap Belt ONLY and Tether: (cont.)

5 - Tighten the lap belt. Push the child restraint down firmly while tightening to remove any slack in the belt.

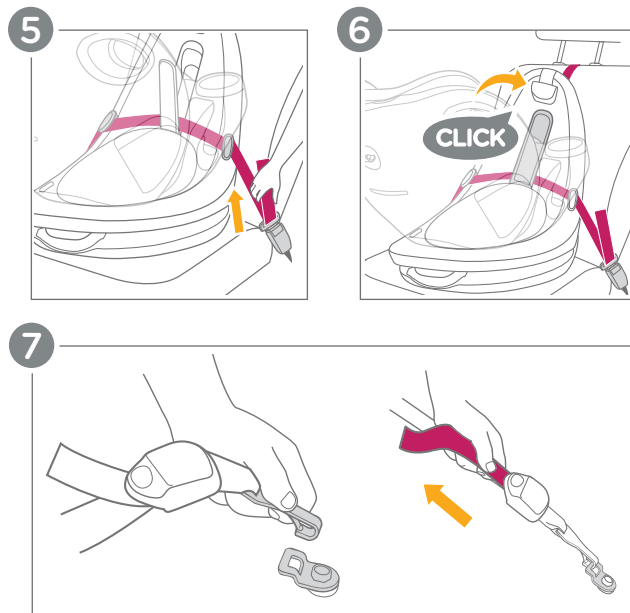
6 - Once the lap belt is tight, close the lock-off bar. Listen for a **CLICK**. Keep your hands clear of the lock-off area while closing it.

7 - Attach the top tether to your vehicle's tether attachment point. Pull the loose end of the webbing on the tether strap to tighten it. There should be no slack in the strap.

After installing your child restraint, continue on to Forward-Facing Securing Child in Seat on pg. 68.

Check Install!

- The lock-off bar is securely locked and the tether has no slack.
- The bubble indicator on the child restraint window is **FULLY** within the **WHITE** line.
- The vehicle belt is buckled and is as tight as possible around the child restraint. The vehicle belt is not loose or twisted.
- The child restraint should be snug and **NOT MOVE** in any direction more than 1 in. (2.5 cm) **AT THE BELT PATH.**



FF - Securing Child in Seat:

IMPORTANT: DO NOT use snowsuits or bulky garments when placing your child in the seat. They can prevent the harness straps from being tightened properly. To keep your child warm, buckle them first, then use a blanket or backwards coat.

1 - Squeeze the rotation lever and turn the child restraint seat to the side position for easier access.

2 - Locate the harness adjustment button above the slot at the harness adjustment strap (a). Press it down while pulling the shoulder harnesses (b) outward to loosen.

3 - Unbuckle the harness by pressing the release buttons on the chest clip.

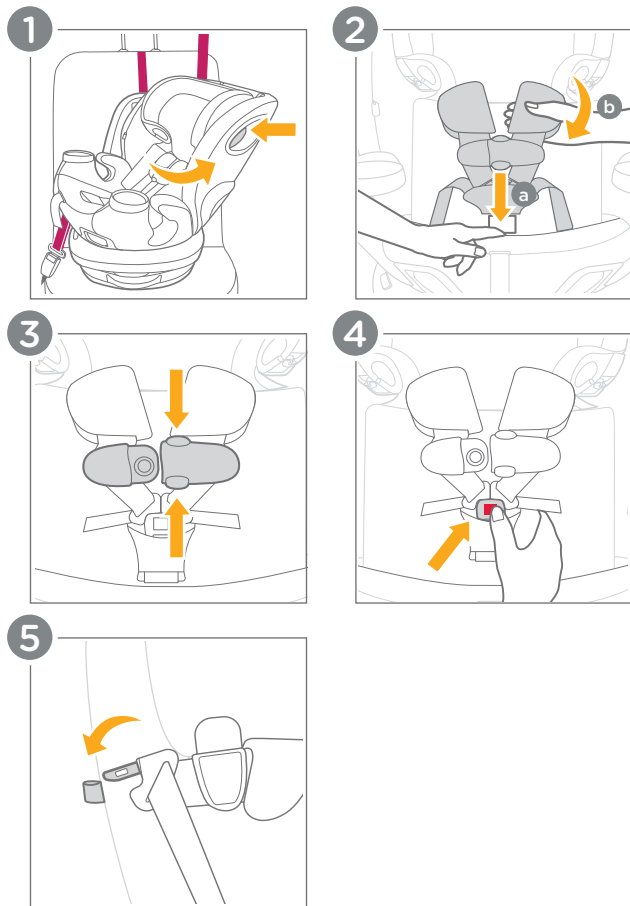
4 - Press the release button to remove the buckle tongues from the crotch buckle.

5 - Spread apart the harness straps and insert the buckle tongues into the harness buckle holders on either side of the child restraint to keep the harness straps out of the way. Place your child into the child restraint and gently guide the child's arms through the harness straps.

IMPORTANT: The child must be in a seated position against both the back and bottom of the seat with no gap behind the child. DO NOT allow the child to slouch.

IMPORTANT: NEVER use the infant insert when forward-facing.

(FF - Securing Child in Seat continued on pg. 70)




FF - Securing Child in Seat: (cont.)

6 - The harness straps must be **AT** or **JUST ABOVE** the child's shoulders. If **NOT**, please refer to **Adjusting Headrest Height** on pg. 26.

7 - Insert the buckle tongues into the buckle. Listen for a **CLICK**. Pull on the buckle to ensure that it is properly attached.

8 - Snap the chest clip together. Listen for a **CLICK**. Temporarily slide it towards the buckle for tightening of the harness straps.

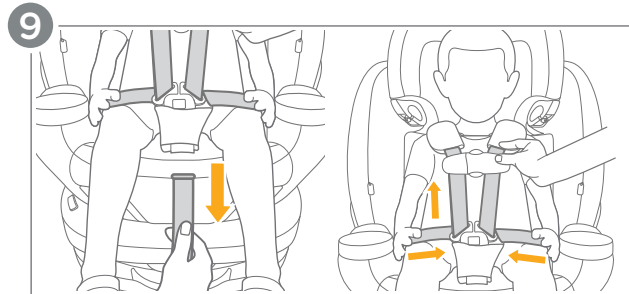
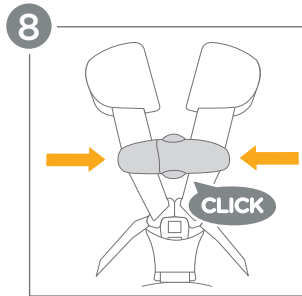
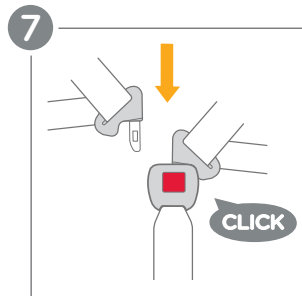
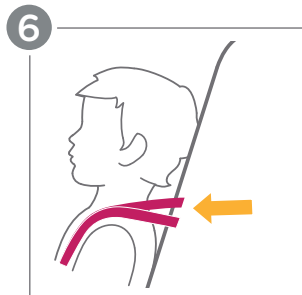
9 - Pull on the harness adjustment strap to tighten the harness. Slide any excess strap length from the child's waist up through the buckle towards the shoulders, and repeat this step until the harness is secure. You should **NOT** be able to vertically pinch the harness straps at the collarbone area.

 The harness should be snug around your child's waist and shoulders. It may take a few adjustments, so be patient!

WARNING! Ensure that nothing interferes with the harness. Ensure that the harness straps are snug around the child and lay flat.

Serious injury or death could occur to a child that is not secured properly. If the child is not secured properly, the child could be ejected in a sudden stop or crash, resulting in serious injury or death.

(FF - Securing Child in Seat continued on pg. 72)

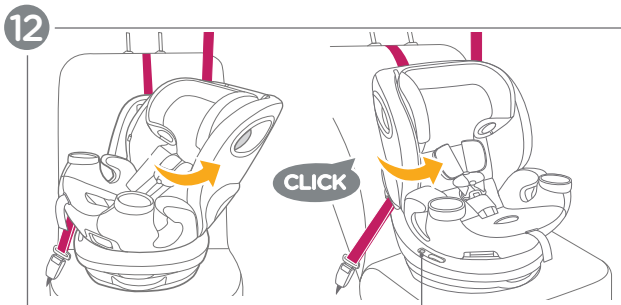
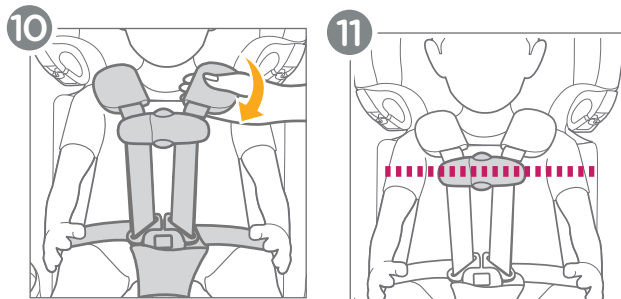


FF - Securing Child in Seat: (cont.)

10 - Without pressing the harness adjustment button, pull forward firmly on the harness straps at the shoulder. If the straps loosen, clean the harness adjustment button and strap (see pg. 97).

11 - Position the chest clip at the child's **ARMPIT LEVEL**.

12 - Turn the child restraint seat to the **FORWARD-FACING** position. Listen for a **CLICK**. Ensure that the turn lock indicator is fully **GREEN**.



Check Setup!

The harness is snug - a snug harness cannot be pinched vertically at the collarbone area, and should not allow any slack. If the harness straps are not snugly adjusted, the child may be ejected from the seat in the event of a crash.

IMPORTANT: A snug strap should not allow any slack. It lies in a relatively straight line without sagging. It does not press on the child's flesh or push the child's body into an unnatural position.

- The chest clip and crotch buckle are secured properly.**
- The chest clip is at the child's armpit level.**
- The shoulder straps are AT or JUST ABOVE the child's shoulders.**
- The turn lock indicator is showing fully GREEN.**

WARNING! ALWAYS ensure that the turn lock indicator is fully green while the vehicle is in motion, even when the child is not in the seat.

NEVER rotate the child restraint while the vehicle is in motion.

Storing LATCH

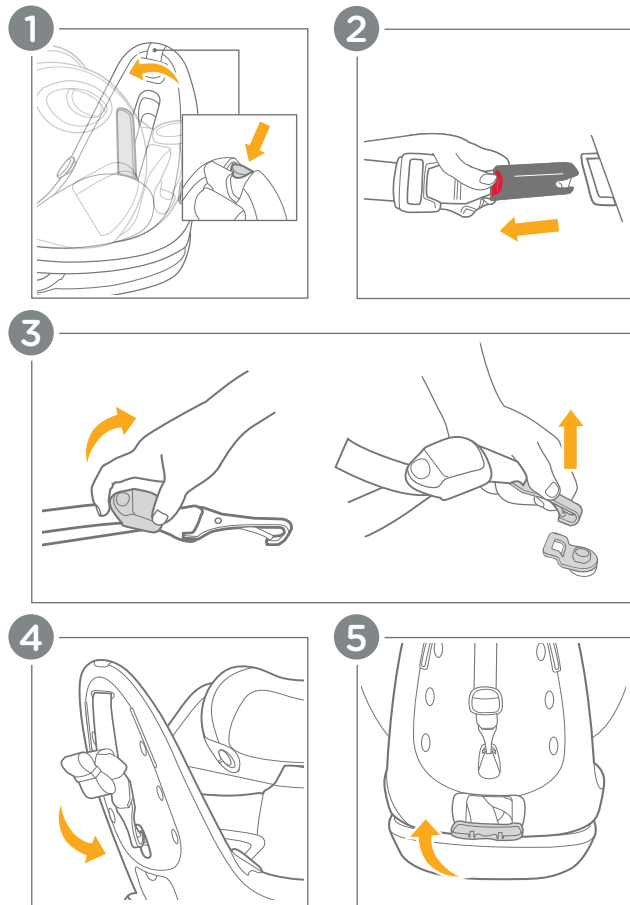
1 - Press the lock-off bar release button to open the lock-off bar on the child restraint base.

2 - Press the red buttons on both lower anchor attachments and pull to remove them from the lower anchor points in your vehicle.

3 - Lift the tether strap adjuster and pull to release the tether strap. Then unclip the tether from your vehicle.

4 - Store the tether strap on the clip on the back of the child restraint base when not in use. The extra tether strap length can be rolled up and secured with the elastic loop.

5 - Store the lower anchor attachments and strap in the storage compartment on the back of the child restraint base when not in use.



Highback Booster - Install:

Before installing:

Adjust the recline to POSITION 1 (see pg. 34).

Remove the side impact bolster (see pg. 38).

Properly store the top tether (see pg. 74).

(Lower anchor attachments may be used to secure the seat in place.)

1 - Loosen the harness straps by pressing the harness adjustment button (a) and pulling on the straps (b).

2 - Squeeze the headrest adjustment lever and move the headrest into the highest position.

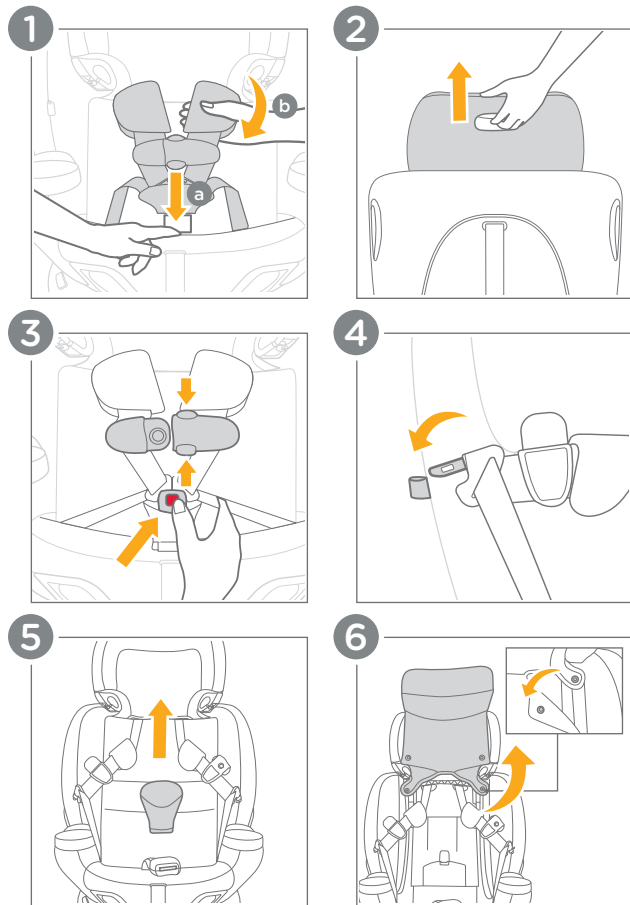
3 - Unbuckle the harness by pressing the release buttons on the chest clip. Then press the release button to remove the buckle tongues from the crotch buckle.

4 - Spread the harness straps apart and insert the buckle tongues into the harness buckle holders on either side of the child restraint.

5 - Remove the crotch pad.

6 - Unsnap the headrest pad flap from the headrest. Lift the headrest pad flap up and out of the way.

(Highback Booster - Install continued on pg. 78)




Highback Booster - Install: (cont.)

7 - Release the buckle tongues from the harness buckle holders and pull the seat pad forward.


8 - Store the crotch buckle in the seat shell.

9 - Open the harness storage door and place the harness, chest clip, and buckle tongues, inside the storage compartment and close the door.

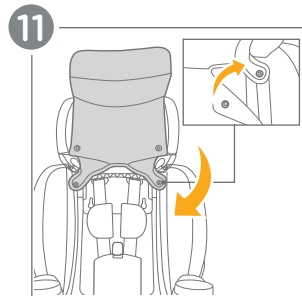
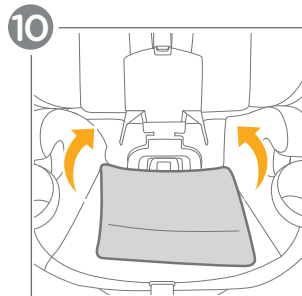
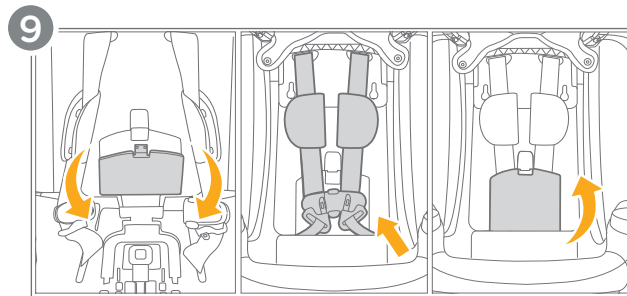
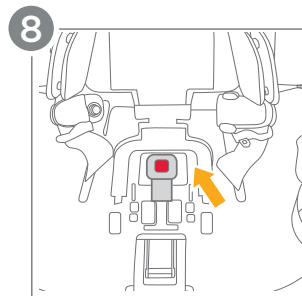
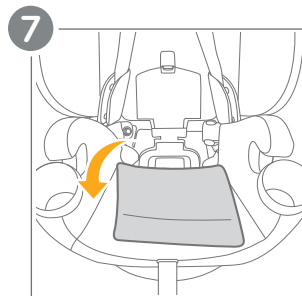
 The harness pads may be left attached outside of the storage compartment.

10 - Push the seat pad back into place.

11 - Push the headrest pad flap back down into place and snap the headrest pad flap to the headrest.

 Lower anchor attachments may be used to secure the seat in place. See pg. 42, steps 6 and 7 for instructions on how to attach and tighten the lower anchor attachments.

After installing, continue on to [Highback Booster - Securing Child in Seat](#) on pg. 80.



Highback Booster – Securing Child in Seat:

WARNING! Use only the vehicle's lap and shoulder belt system when restraining the child in this booster seat. **This restraint is not certified for aircraft use, as a lap-only belt is not permitted.** In addition to the lap/shoulder belt, lower anchors may be used to secure the seat in place.

Your child must be able to sit upright and keep the vehicle lap/shoulder belt properly secured over their chest and lap throughout the car ride. If your child is unable to do so, please secure your child in this child restraint using the 5-point harness in forward-facing mode.

1 - Thread the vehicle's shoulder belt into the seat belt guide in the headrest.

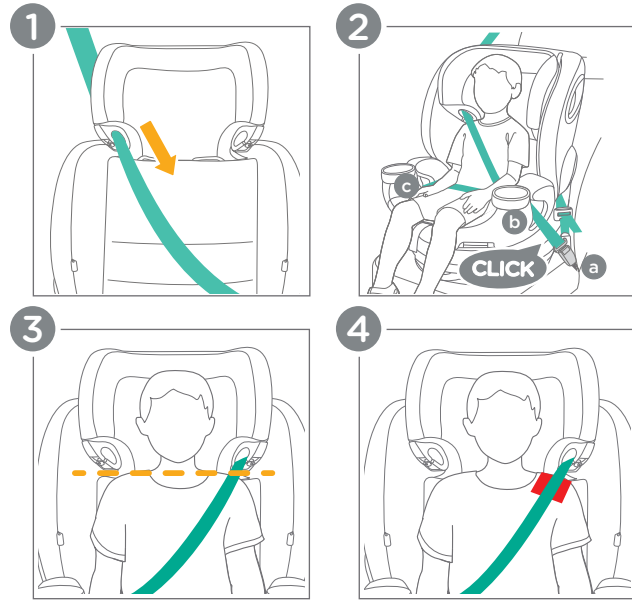
2 - Place the child on the child restraint and buckle them in (a). Ensure that the lap and shoulder belt are **BOTH UNDER** the armrest nearest the vehicle buckle (b). Ensure that the lap belt is also under **BOTH** armrests (c).

WARNING: DO NOT position the vehicle shoulder belt under the child's arm or behind their back.

WARNING: DO NOT position the vehicle belt over the armrests.

3 - The shoulder belt guides **MUST** be **AT** or **JUST ABOVE** the child's shoulders. If **NOT**, please refer to **Adjusting Headrest Height** on pg. 26.

4 - The shoulder belt **MUST** be positioned in the red zone when properly adjusted. Ensure that the shoulder belt lays flat against your child's chest and is not twisted.



WARNING: The child must be in a seated position against both the back and bottom of the seat with no gap behind the child. **DO NOT** allow the child to slouch.

Backless Booster - Install/Use:

WARNING! Use only the vehicle's lap and shoulder belt system when restraining the child in this booster seat. **This restraint is not certified for aircraft use, as a lap-only belt is not permitted.**

Your child must be able to sit upright and keep the vehicle lap/shoulder belt properly secured over their chest and lap throughout the car ride. If your child is unable to do so, please secure your child in this child restraint using the 5-point harness in forward-facing mode.

Before installing:

Remove the side impact bolster (see pg. 38).

Properly store the LATCH system (see pg. 74).


1 - Spread the harness straps apart and insert the buckle tongues into the harness buckle holders on either side of the child restraint.

2 - Remove the crotch pad.

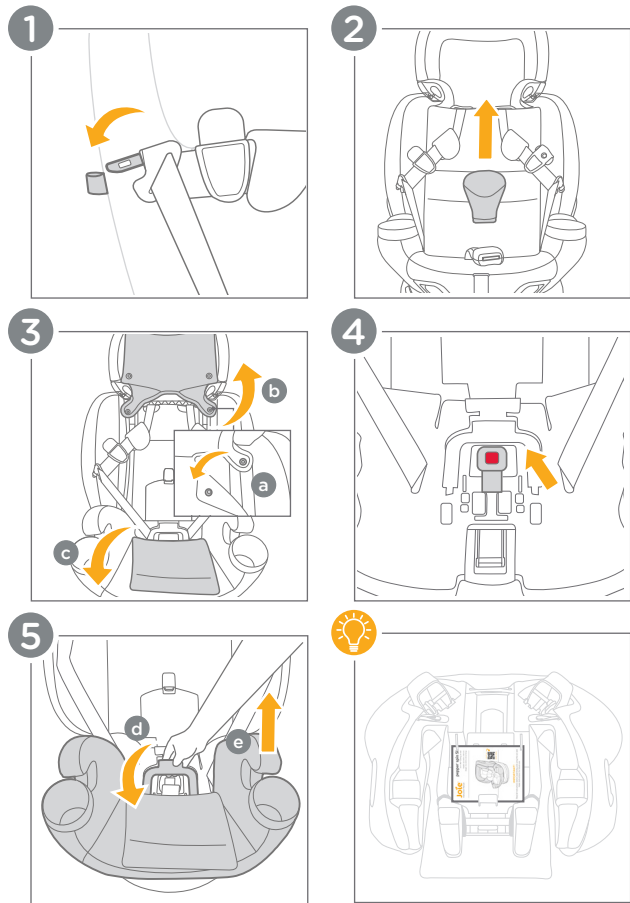
3 - Unsnap the headrest pad flap from the headrest (a). Lift the headrest pad flap up and out of the way (b), then pull the seat pad forward (c).

4 - Store the crotch buckle in the seat shell.

5 - Lift the backless booster release handle up firmly (d) and pull the booster base up and away (e) from the child restraint back.

 In backless booster mode, the manual may be stored on the underside of the backless booster.

(Backless Booster - Install/Use continued on pg. 84)



Backless Booster - Install/Use: (cont.)

Shoulder belt positioning clip (optional):

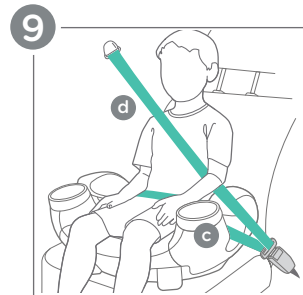
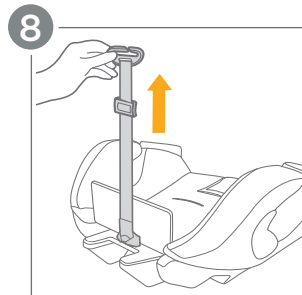
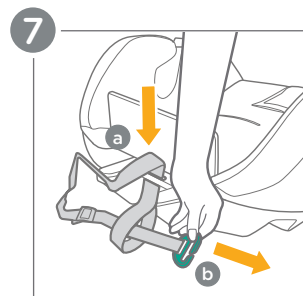
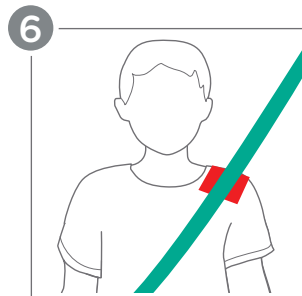
6 - Use the shoulder belt positioning clip if the seatbelt does not naturally fall in the red zone on the child's shoulder.

7 - Insert the loop end of the belt positioning strap through the slot on the back of the booster base (a). Then, push the clip through the loop to secure it (b).

8 - Pull the shoulder belt positioning clip tight to secure it.

9 - Place the child on the child restraint and buckle them in. Ensure that the vehicle lap belt is **UNDER BOTH** armrests (c). The vehicle shoulder belt must be **OVER** the child's shoulder on the retractor side (d).

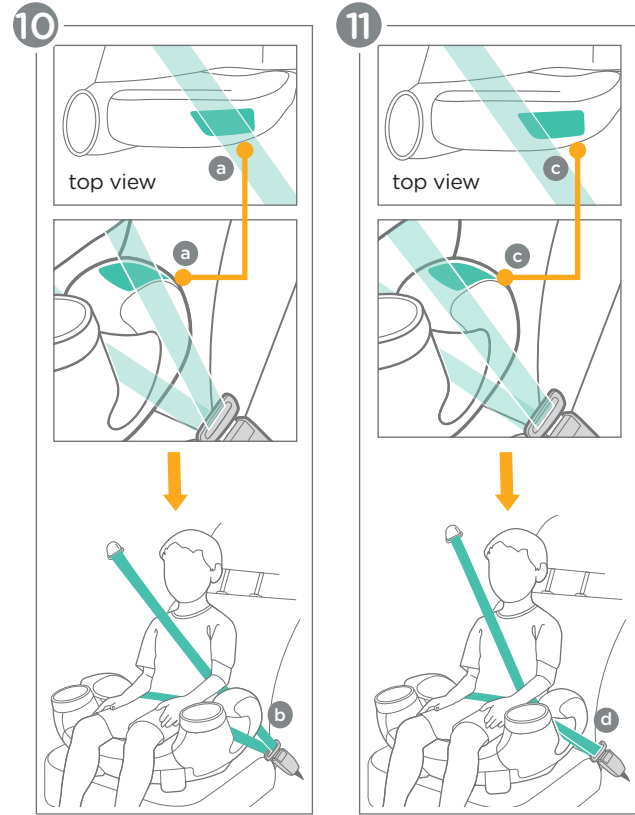
(Backless Booster - Install/Use continued on pg. 86)



Backless Booster - Install/Use: (cont.)

10 - With the child in the seat: IF the shoulder belt is **ON OR BEHIND** the green label (a), keep the shoulder belt **OVER** the armrest (b).

11 - With the child in the seat: IF **ANY PART** of the shoulder belt is **IN FRONT OF** the green label (c), move the shoulder belt **UNDER** the armrest (d).

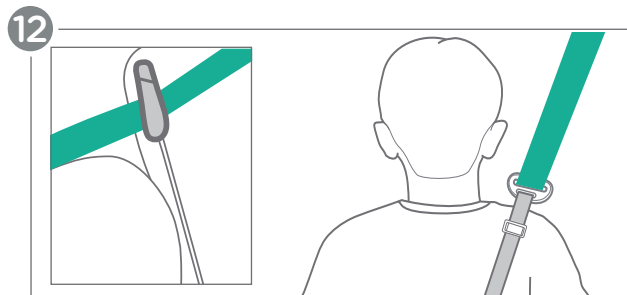


Backless Booster - Install/Use: (cont.)

12 - If using, thread the shoulder belt through the shoulder belt positioning clip. Tighten or loosen the shoulder belt positioning strap so that the clip sits just above the shoulder.


WARNING: DO NOT allow the child to slouch.

WARNING: DO NOT position the vehicle shoulder belt under the child's arm or behind their back.



Reattaching Backless Booster:

1 - If attached, unthread and remove the shoulder belt positioning clip from the back of the backless booster.

 The shoulder belt positioning clip may be stored in the harness storage door.

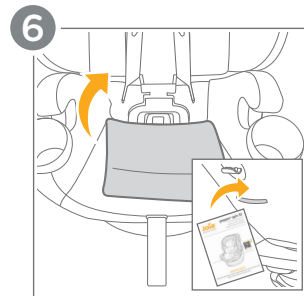
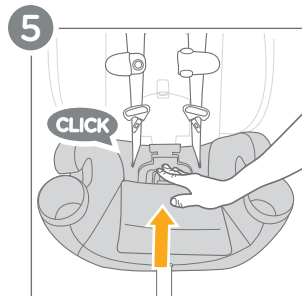
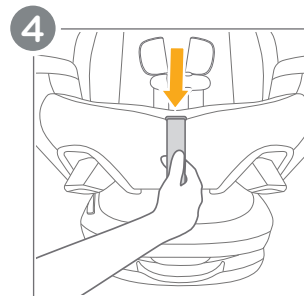
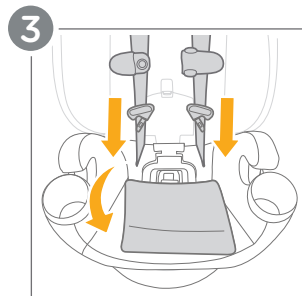
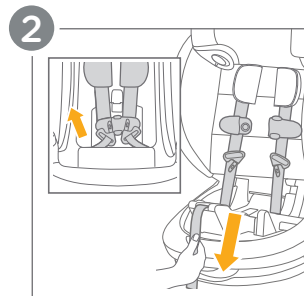
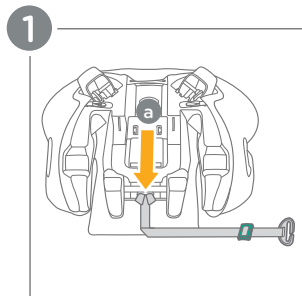
2 - If planning to use the seat in harnessed mode, open the harness storage door and remove the harness, chest clip, and buckle tongues, then close the door. Completely tighten the harness straps on the child restraint by pulling the harness adjustment strap.

3 - Fold the seat pad forward. Lightly place the booster base on the child restraint back without pushing it down. Thread the harness straps through the slots on either side of the backless booster release handle in the booster base.

4 - Before pushing the backless booster fully in, unthread the harness adjustment strap from its current position and rethread it up through the opening on the front of the booster base fabric.

5 - Push the booster base down firmly into the child restraint back. Listen for a **CLICK**.

6 - Fold the seat pad back into place and place the manual in the compartment on the back of the child restraint.

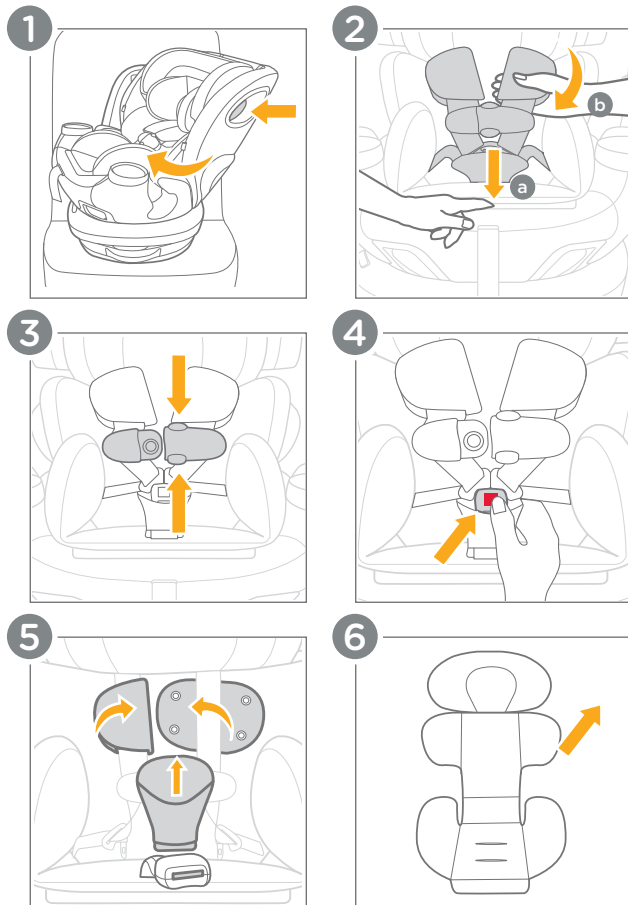


Removing Softgoods:

WARNING! NEVER use the child restraint without the softgoods in place.

- 1 - Squeeze the rotation lever and turn the child restraint seat to the side position for easier access.
- 2 - Loosen the harness straps by pressing the harness adjustment button (a) and pulling the straps (b).
- 3 - Unbuckle the harness by pressing the release buttons on the chest clip.
- 4 - Press the release button to remove the buckle tongues from the crotch buckle.
- 5 - Remove the crotch pad and the harness pads.
- 6 - Gently pull the infant insert upwards. Slide off the sleeve that covers the side impact bolster, then thread the crotch buckle through the infant insert to remove it.

(Removing Softgoods continued on pg. 90)



Removing Softgoods: (cont.)

7 - Unbutton the side impact bolster from the seat pad on both sides. Pull the seat pad forward. Unthread the side impact bolster from the harness straps and pull up gently to remove it.

8 - Spread the harness straps apart and insert the buckle tongues into the harness buckle holders on either side of the child restraint.

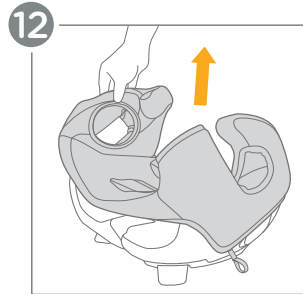
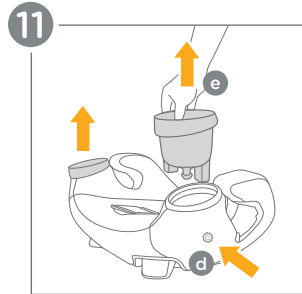
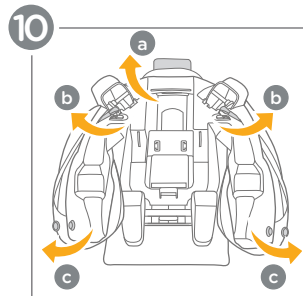
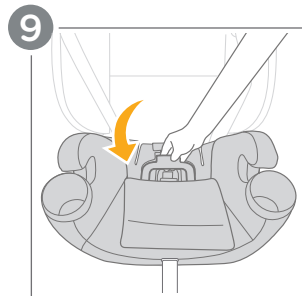
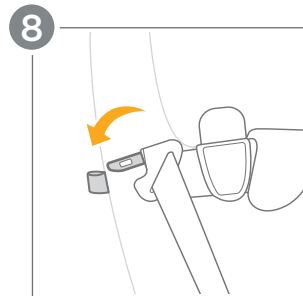
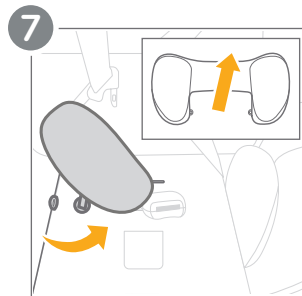
9 - Lift the backless booster release handle up firmly and pull the booster base up and away from the child restraint back.

10 - Unclip the tab (a), two elastic loops (b), and two snaps (c) on the underside of the seat.

11 - Press the cup holder release buttons (d) and pull up on the cup holders (e) to remove them from the seat.

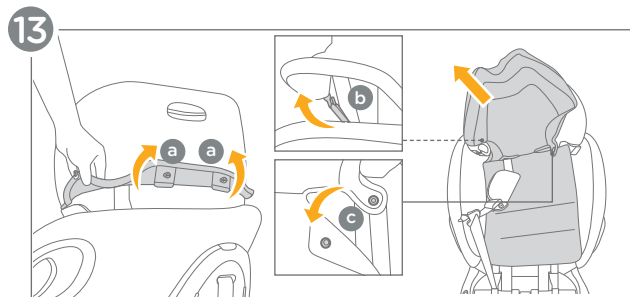
12 - Remove the seat softgoods.

(Removing Softgoods continued on pg. 92)

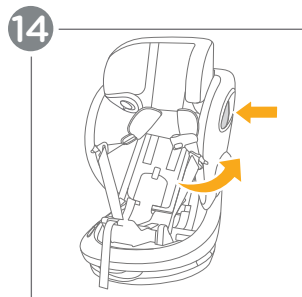


Removing Softgoods: (cont.)

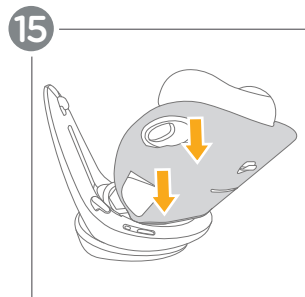
13 - Fully raise the headrest for access. On the BACK of the headrest, unclip BOTH tabs at the outer base of the headrest (a) and unhook BOTH elastic straps near the highback booster shoulder belt guides (b). Then pull the headrest cover forward and undo BOTH snaps of the headrest cover and remove the headrest cover and headrest pad flap (c).



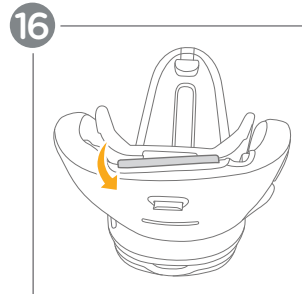
14 - Squeeze the rotation lever and turn the child restraint seat to the rear-facing position.



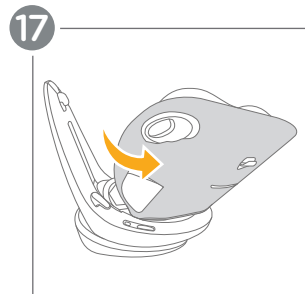
15 - Release the softgoods fabric from around the sides of both side impact pods and rotation levers by pulling the fabric down and then unwrapping it from the hardgoods.



16 - Fully lower the headrest for access. Unclip the tab on the top of the backrest.



17 - Remove the base softgoods by pulling them away, starting at the front side of the seat.



DO NOT remove any foam from the seat.

To reassemble the softgoods, follow these steps in reverse order.

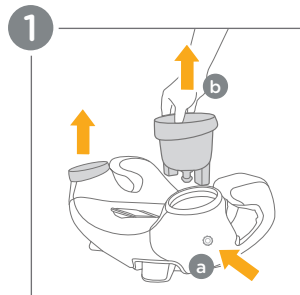
Using Cup Holders

1 - Press the cup holder release buttons (a) and pull up on the cup holders (b) to remove them from the seat.

IMPORTANT: Cup holders **MUST** be installed when using the car seat.

IMPORTANT: **NEVER** put hot liquids in the cup holders.

IMPORTANT: The maximum recommended weight in each cup holder is 1 lb. (0.5 kg).



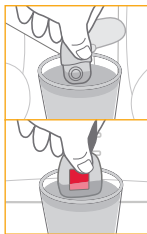
Care and Maintenance:

Washing the Seat Pads: Refer to the care label attached to the fabrics for washing and drying instructions. **DO NOT** attempt to remove the foam or tape from under the seat pad.

Cleaning the Seat Shell and Foams: Use only mild detergent, water, and a soft cloth to clean the shell, base, and foams. Air dry after cleaning. **NEVER** use bleach or any other harsh chemicals anywhere on the child restraint.

Cleaning the Buckle, Chest Clip, Harness, and LATCH straps:

Hand rinse the buckle and chest clip using warm water only. **DO NOT** use soaps, solvents, or lubricants. These can cause malfunctions. Air dry the buckle and chest clip. Use a damp soft cloth and mild detergent to hand wipe the harness and LATCH straps clean. **DO NOT** submerge or saturate the harness or LATCH straps. Doing so may compromise the safety of the straps.



Storage: When not in use for a long period, remove the child restraint from the vehicle seat. Store the child restraint in a cool, dry place that your child does not have access to.

Normal Wear and Tear: It is normal for the fabric to fade from sunlight and show wear and tear over time even when used normally.

Regular Checks: Regularly check that everything functions properly. If any parts are torn, broken, or missing, stop using immediately and contact Joie for replacement parts.

Care and Maintenance:

Keeping Your Harness Adjustment Button & Strap Clean:

A clean harness adjustment button and strap are key to a properly functioning harness. Regularly check the button and strap for dirt and debris, and clean them as needed.

Cleaning Steps:

1. Expose the button: Remove the backless booster from the car seat (pg. 82) to access the harness adjustment button.

2. Open the mechanism: Push down on the lever on the back of the button. This will expose the small teeth and any trapped debris. Pull the harness adjustment strap out slightly to help loosen debris.

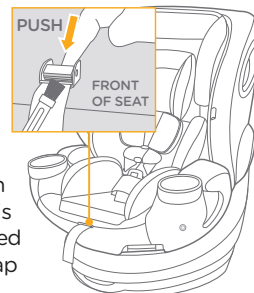
3. Clean the button and strap: Use a soft, nylon-bristled brush to remove any dirt or debris. For stubborn debris or residue, you can use a vacuum cleaner, a damp cloth, or a flat, plastic edged tool to scrape. **NEVER** use a sharp or metal tool.

4. Test and reassemble: Test the harness to ensure it's working correctly. Reattach the softgoods to the seat and then test again.

Important:

DO NOT use harsh cleaning chemicals.

DO NOT saturate the harness adjustment strap with liquids.



Joie Baby USA Consumer Service Contact Info.

Address: 70 Thousand Oaks Blvd., Morgantown, PA 19543

Email: info.us@joiebaby.com • **Phone:** 1-866-798-7866

Joie™

Effortlessly happy.

Helping parents be their best
with worry-free baby gear.