

# Joie™

Instruction Manual

## rosemary™ lx

side-by-side stroller with travel  
system compatibility

Weight: birth up to 50 lb. (22.7 kg) per seat

Height: birth up to 45 in. (114.3 cm) per seat

---



### **IMPORTANT!**

Read all instructions before assembling and using the stroller.

Keep instructions for future use.

---

## Contents:

---

- 3 Warranty Information
- 4 Warnings
- 8 Parts List
- 10 Opening Stroller
- 10 Attaching & Detaching Front Wheels
- 12 Attaching & Detaching Rear Wheels
- 14 Securing Canopies
- 14 Securing Storage Basket
- 16 Attaching & Detaching Arm Bar
- 18 Attaching & Detaching Cup Holders
- 20 Securing Your Child
- 24 Adjusting Recline
- 24 Using Full Recline
- 26 Adjusting Calf Support
- 28 Using Front Swivel Locks
- 28 Using Brake
- 30 Using Canopy
- 32 Removing Harness & Buckle Covers
- 34 Using Reversible Seat Pad
- 34 Folding Stroller
- 36 Using Accessories
- 40 Care & Maintenance

### Child Usage Requirements

This stroller is suitable for use with children who meet the following requirements:

#### Weight:

**Right seat usage:** birth up to 50 lb. (22.7 kg) (can be used from birth with newborn nest/occupant retention)

**Left seat usage:** up to 50 lb. (22.7 kg) or use as a travel system with a compatible infant car seat (sold separately)

**Height:** birth up to 45 in. (114.3 cm) per seat

---

## Warranty Information:

---

### Product Registration

Please fill in the information below. The model number and the date of manufacture are located on a label on the stroller frame. Fill out the prepaid registration postcard attached to the product and mail it today. To register your product online, please visit: <https://joiebaby.com/us/register-gear>.

Model Name: \_\_\_\_\_

Model Number: \_\_\_\_\_

Date of Manufacture: \_\_\_\_\_

Date of Purchase: \_\_\_\_\_

register your  
product online



### Limited Warranty

We have purposely designed our high-quality products so that they can grow with both your child and your family. Because we stand by our product, our gear is covered by a custom limited warranty per product, starting from the day it was purchased. Please have the proof of purchase, model number, and date of manufacture available when you contact us. For warranty information, please visit: [www.joiebaby.com/us](http://www.joiebaby.com/us).

### Contact

#### Joie Baby USA Consumer Service Contact Info.

Address: 70 Thousand Oaks Blvd., Morgantown, PA 19543

Email: [info.us@joiebaby.com](mailto:info.us@joiebaby.com)

Phone: 1-866-798-7866

---

## WARNING

---

Failure to follow these warnings and instructions could result in serious injury or death.

- **NEVER** leave children unattended.
- **Choking Hazard:** Keep small parts away from children. They may pose a choking hazard.
- **Suffocation Risk:** Remove all the plastic covers before using the stroller. Destroy these covers or keep them completely out of the reach of children.
- **If the stroller becomes damaged or broken, STOP USING IT IMMEDIATELY.** A damaged stroller can be unsafe.
- **DO NOT** modify the stroller in any way unless specified in the manual. Unauthorized changes can compromise safety.
- **Use ONLY Joie** genuine parts and accessories.
- **Overloading, incorrect folding, and using accessories other than those approved by Joie** (e.g., child seats, bag hooks, rain covers, buggy boards, etc.), may damage or make the stroller unstable.

---

## WARNING

---

Failure to follow these warnings and instructions could result in serious injury or death.

- **Weight & Height Limits:** This stroller is only suitable for children up to 50 lb. (22.7 kg) and 45 in. (114.3 cm) tall in each seat. Exceeding these limits can cause excess wear and tear, potentially leading to an unstable stroller.
- **NEVER** transport more than one child in each seat.
- **To prevent a hazardous, unstable condition, DO NOT** place more than 10 lb. (4.5 kg) in the storage basket and **NEVER** place purses, shopping bags, parcels, or other items on the handlebar or canopy.
- **DO NOT** use the storage basket as a child carrier.
- **Avoid serious injury from falling or sliding out. ALWAYS** use the harness. After fastening the buckles, adjust the straps to get a snug fit around your child.
- **PINCH HAZARD:** Use care when folding and unfolding the stroller and keep fingers clear of moving parts. Ensure that the stroller is fully erected and locked before allowing your child near the stroller.

---

## WARNING

---

Failure to follow these warnings and instructions could result in serious injury or death.

- **Strangulation Hazard: DO NOT** place items with a string around your child's neck, suspend strings from the stroller, or attach strings to toys.
- **DO NOT** let your child play with the stroller.
- **NEVER** allow your child to stand on the stroller.
- **The brakes MUST be engaged** when the stroller is stopped and when placing and removing your child.
- **Navigate curbs and rough ground carefully.** Repeated impact could cause damage to the stroller.
- **The stroller is to be used only at a walking speed** and is not intended for use while jogging, skating, etc.
- **NEVER** use the stroller on stairs or escalators. You may suddenly lose control of the stroller, or your child may fall out.
- **This stroller is NOT a sleeping device.** Your children **MUST** be moved to an approved sleeping device if they need to sleep.

---

## WARNING

---

Failure to follow these warnings and instructions could result in serious injury or death.

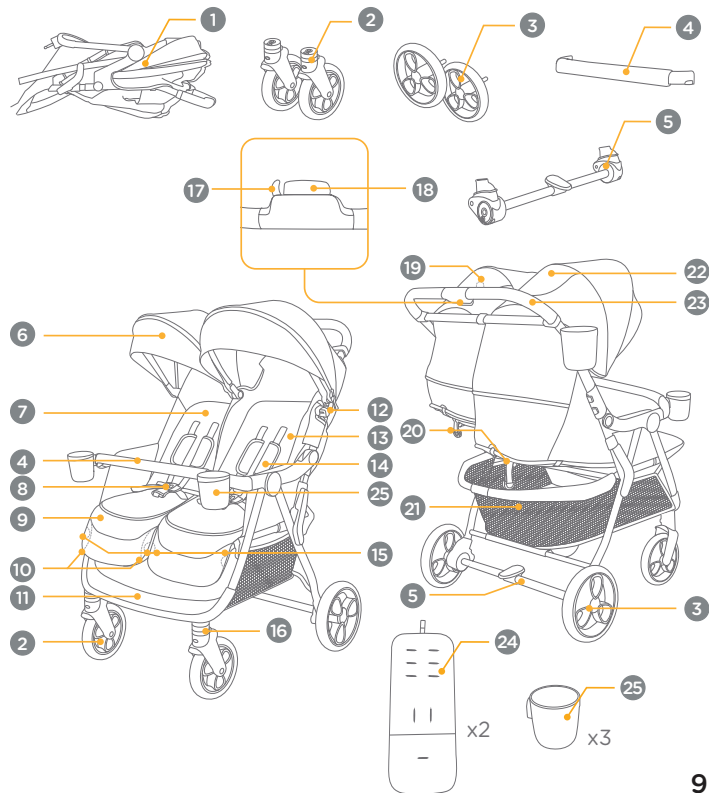
- **DO NOT** apply heat to dry the fabric. **ONLY** air dry the fabric.
- **DO NOT** leave the stroller exposed near a strong heat source, such as a radiator or open fire.
- **DO NOT** store the stroller in a damp place.
- **To avoid burns, NEVER** put hot liquids in the cup holders.
- **To prevent a hazardous, unstable condition, DO NOT** place more than 1 lb. (0.5 kg) in each cup holder.
- **When using the stroller frame with a Joie infant car seat,** refer to the child usage requirements listed in the car seat instruction manual.
- **Child may slip into leg openings and strangle. NEVER** use in reclined carriage position unless the calf support is raised to cover the front opening and the fabric flaps are snapped to the sides of the stroller seat.

## Parts List:

Please make sure there are no missing parts. Please contact Joie Consumer Service if anything is missing.

- 1 Stroller Frame
- 2 Front Wheels
- 3 Rear Wheels
- 4 Arm Bar
- 5 Brake Assembly
- 6 Canopy (x2)
- 7 Full-Recline Seat
- 8 Restraint Buckle (x2)
- 9 Calf Support (x2)
- 10 Full-Recline Closure Flaps
- 11 Footrest
- 12 Infant Car Seat Lock
- 13 Infant Car Seat Compatible Seat
- 14 Shoulder Harness Cover (x4)
- 15 Calf Support Adjustment Buttons
- 16 Front Swivel Lock (x2)
- 17 Secondary Fold Button
- 18 One-Hand Fold Button
- 19 Tracking Device Pocket
- 20 Recline Adjusters
- 21 Storage Basket
- 22 Canopy Window Cover (x2)
- 23 Handlebar
- 24 Reversible Seat Pad (x2)
- 25 Cup Holder (x3)

## Parts List:



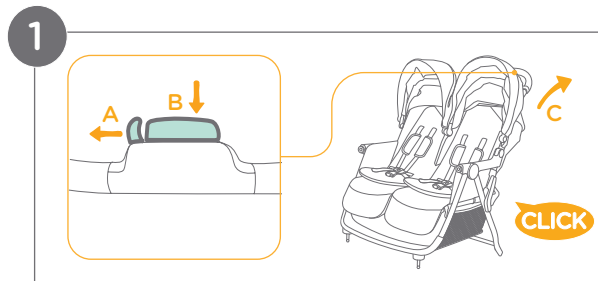
---

## Opening Stroller:

---

- 1 - Push the secondary fold lock outward (A) and squeeze the one-hand fold button (B). At the same time, pull the stroller backward (C) to open. A “clicking” sound will confirm that the stroller is completely open.

**IMPORTANT: Safety Check:** Before using the stroller, **ALWAYS** ensure that it is fully open.



---

## Attaching & Detaching Front Wheels:

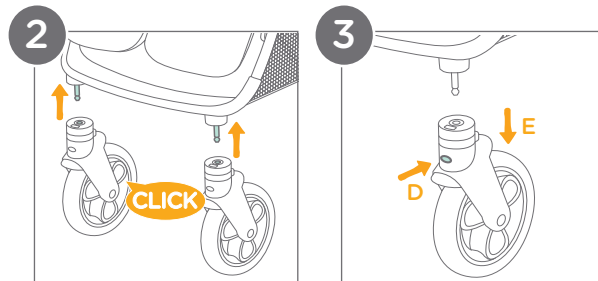
---

### 2 - Attaching the Front Wheels:

Insert the front wheels onto the front legs.

A “clicking” sound will confirm that the wheels are properly locked in place.

**IMPORTANT: Safety Check: ALWAYS** pull on the wheels after attachment to ensure that they are securely fastened.



### 3 - Detaching the Front Wheels:

To remove the front wheels, press the release button (D) on the front of each wheel and pull the front wheel away (E).

## Attaching & Detaching Rear Wheels:

### Attaching the Brake Assembly:

- 1 - Insert the brake assembly into the rear legs.
- 2 - A “clicking” sound will confirm that the brake assembly is properly locked in place.

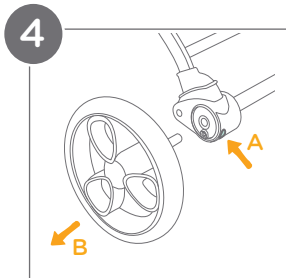
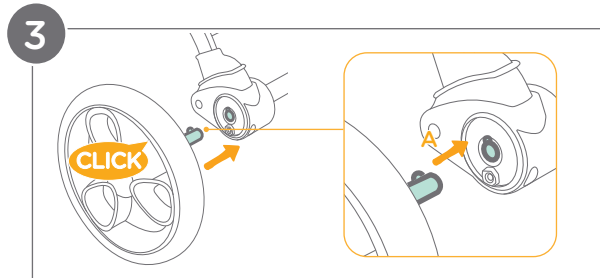
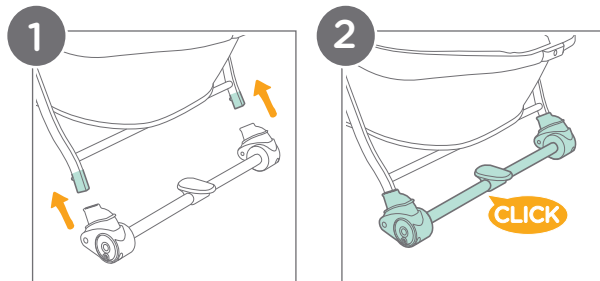
### Attaching the Rear Wheels:

- 3 - Insert the rear wheels into the rear legs.  
Ensure that the notches on the wheel align with the notch in the leg (A).  
A “clicking” sound will confirm that the wheels are properly locked in place.

**IMPORTANT:** Safety Check: **ALWAYS** pull on the wheels after attachment to ensure that they are securely fastened.

### Detaching the Rear Wheels:

- 4 - To remove the rear wheels, press the release button (A) on the back of each wheel hub and pull the rear wheel away (B).



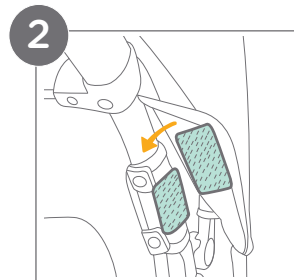
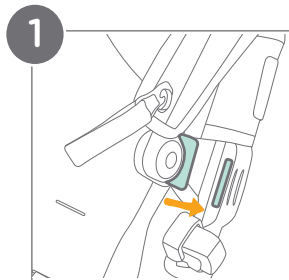
---

## Securing Canopies:

---

- 1 - Slide the canopy tabs into the canopy openings on both ends and the center of the stroller frame.
- 2 - Attach the two sets of hook and loop fasteners on the sides of each canopy.

**The canopies are not designed to be removed.**



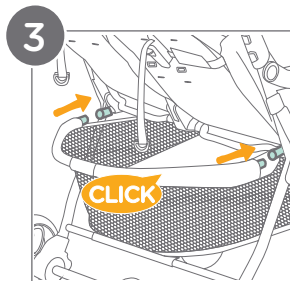
---

## Securing Storage Basket:

---

- 3 - Secure the storage basket by squeezing the buttons on the tubes as you push the ends into their designated slots on the back of the stroller.

A “clicking” sound will indicate that the storage basket tube is properly locked in place. Pull back on the storage basket to ensure that it is securely fastened.



## Attaching & Detaching Arm Bar:

**IMPORTANT:** ALWAYS secure your child with the harness.

The arm bar is not a restraint and cannot prevent falls.

**DO NOT** lift the stroller by the arm bar. This can cause damage or injury.

**Use care** when attaching the arm bar onto the stroller with a child in the stroller.

**CAREGIVER MUST ALWAYS** help the child get into and out of the stroller.

### 1 - Attaching the Arm Bar:

Align the ends of the arm bar with the two arm bar mounts on the stroller frame (A).

Push the arm bar down (B).

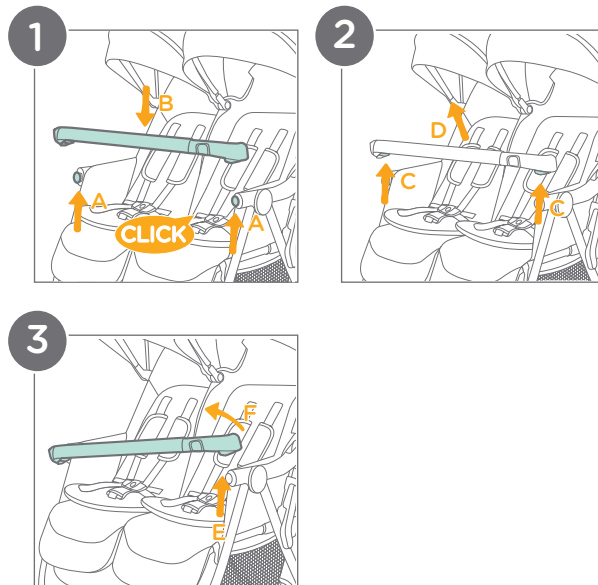
A “clicking” sound will indicate that the arm bar is properly locked in place. Pull up on the arm bar to ensure that it is securely fastened.

### 2 - Detaching the Arm Bar:

Squeeze both arm bar buttons simultaneously (C). Pull the arm bar up (D) to detach it from the stroller frame.

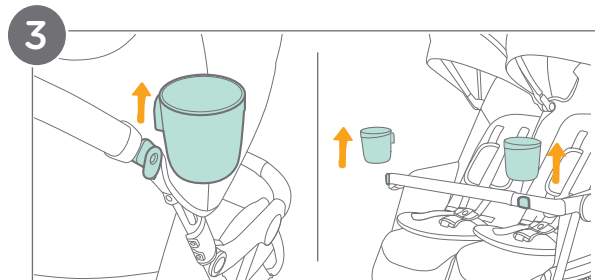
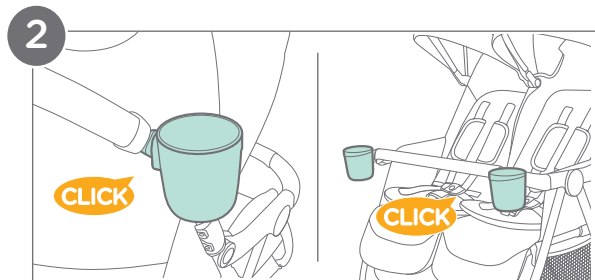
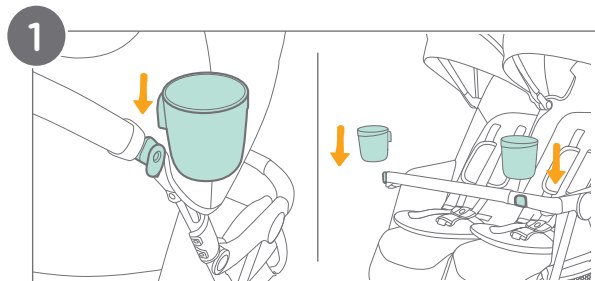
### 3 - Rotating the Arm Bar:

Press and hold one arm bar button (E) while lifting up to rotate the arm bar at the arm bar mount on the other side of the stroller (F).



## Attaching & Detaching Cup Holders:

- 1 - To attach, align each cup holder with the cup holder mounts on the stroller frame or arm bar and slide downward.
- 2 - A “clicking” sound will indicate that the cup holder is properly locked in place. Pull up on the cup holder to ensure that it is securely fastened.
- 3 - To detach each cup holder, pull up firmly to slide it off of the mount.



## Securing Your Child:

Ensure that the brakes are fully locked before placing your child in the stroller.

### 1 - Releasing the Restraint Buckle:

Locate the button in the center of the restraint buckle and press it firmly to release the harness straps.

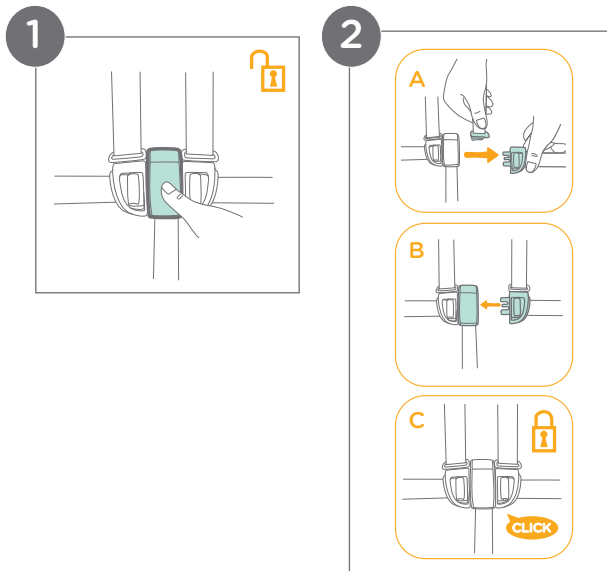
### 2 - Locking the Restraint Buckle:

Slide the shoulder harness buckle into the waist belt buckle (A). Insert the combined buckles into the center buckle (B). A “clicking” sound will confirm that the restraint buckle is properly locked in place (C).

**IMPORTANT:** Secure your child with the harness: **NEVER** leave your child unbuckled in the stroller. A secure harness is essential to prevent them from falling or sliding out.

**Proper harness adjustment:** Ensure that the harness straps are snug but comfortable. The space between the child and the harness straps should be about a 1/2 in. (1 cm).

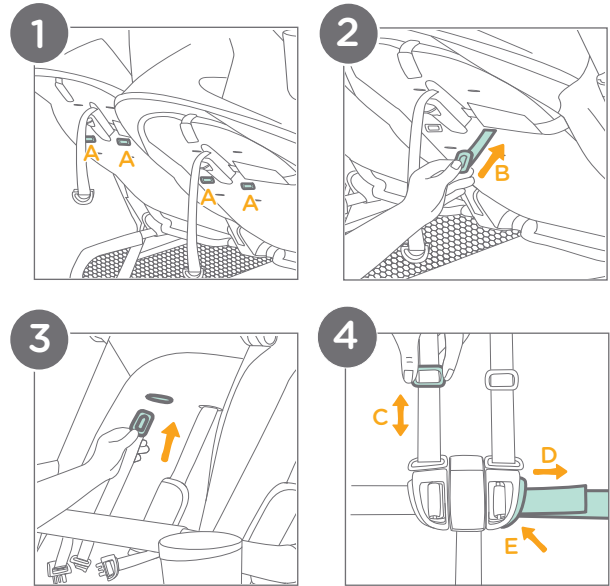
**Shoulder strap positioning:** **NEVER** cross the shoulder straps. **ALWAYS** keep them straight over your child's shoulders to avoid putting pressure on the child's neck.



## Shoulder Harness Height Adjustment:

- 1 - Locate the shoulder harness anchors (A) on the back of each seat.
- 2 - Turn the harness anchor to be in line with the harness strap and thread it through the shoulder harness slot from back to front (B).
- 3 - Re-thread the harness anchor through the correct slot from front to back. Ensure that both sides are adjusted to slots at the same height.
- 4 - Use the slide adjuster (C) to adjust the length of the shoulder harness straps. Pull the waist harness strap (D) to tighten the waist harness. Press the button (E) on the waist belt buckle and pull to loosen the waist harness strap (D).

**IMPORTANT:** DO NOT adjust the harness anchors with a child in the stroller.



## Adjusting Recline:

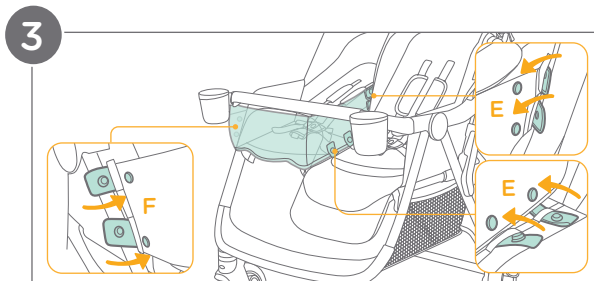
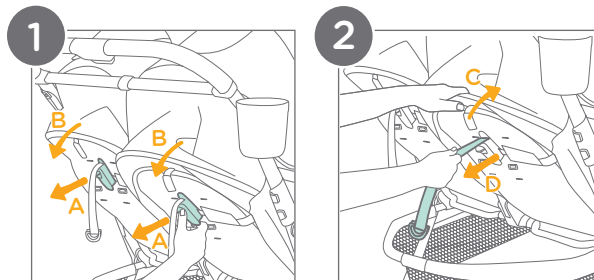
### 1 - Reclining the Backrest:

Press the lever (A) in the center of the recline adjuster while pulling the backrest backward (B).

### 2 - Raising the Backrest:

Push the backrest forward (C) while pulling the webbing (D) at the end of the recline adjuster.

**IMPORTANT:** When making adjustments to the recline, make sure your child's head, arms, and legs are clear of moving parts and the stroller frame to prevent injury.



**3 -** When using the full-recline seat, the calf support must be fully raised with the full-recline closure flaps snapped in place.

First, pull the full-recline closure flaps located inside the calf support outwards.

On the inner side of the seat, pass the closure flaps through all 4 fabric loops and fasten the snaps to each other (E).

On the outer side of the seat, pass the closure flaps through 2 fabric loops and fasten the snaps to each other (F).

---

## Adjusting Calf Support:

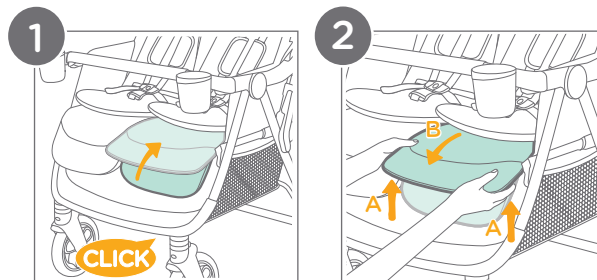
---

### 1 - Raising the Calf Support:

Lift the 2-position calf support upwards. A “clicking” sound will indicate that it is properly locked in place.

### 2 - Lowering the Calf Support:

Squeeze the calf support adjustment buttons on both sides of the calf support (A) simultaneously and gently rotate the calf support downward (B).



---

## Using Front Swivel Locks:

---

### 1 - Locking the Wheels:

Ensure that the front wheels are positioned straight ahead, not angled to the side or turned around.

The swivel locks are located on the backside of each wheel.

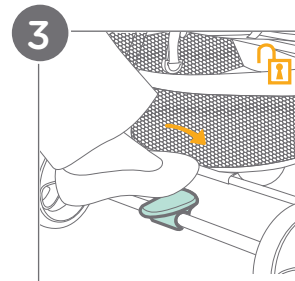
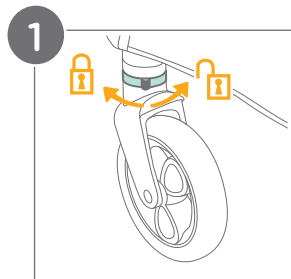
Rotate each swivel lock clockwise. A “clicking” sound will confirm that the wheels are properly locked in a straight position.

### Unlocking the Wheels:

Rotate each swivel lock counter-clockwise. The wheels will swivel freely again.



It is recommended to use the swivel locks on uneven surfaces.



---

## Using Brake:

---

2 - To lock the brake, push the brake lever downward.

3 - To unlock the brake, push the brake lever forward.

**IMPORTANT:** ALWAYS lock the brake when the stroller is not moving.

---

## Using Canopy:

---

### Opening and Closing the Canopy:

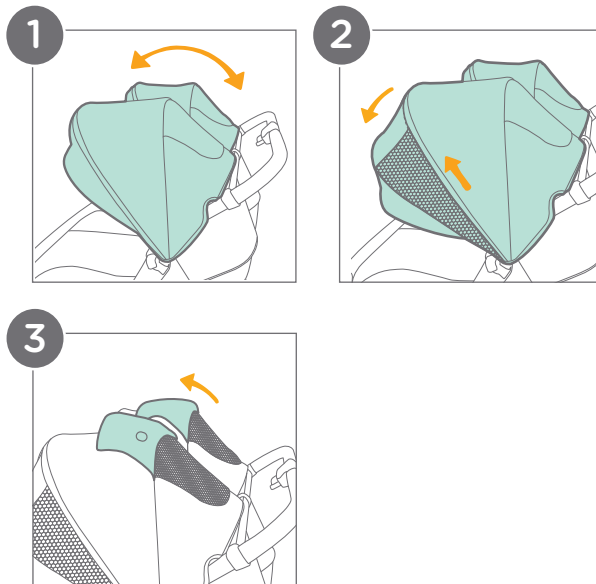
- 1 - To open, pull the canopy forward towards the front of the stroller. To close, push the canopy back.
- 2 - For extended canopy coverage, unzip the canopy zipper and pull the canopy fully forward.

### Ventilation:

- 3 - For airflow, flip up the canopy window covers.



A tracking device may be added to the pocket inside the canopy window cover.



---

## Removing Harness & Buckle Covers:

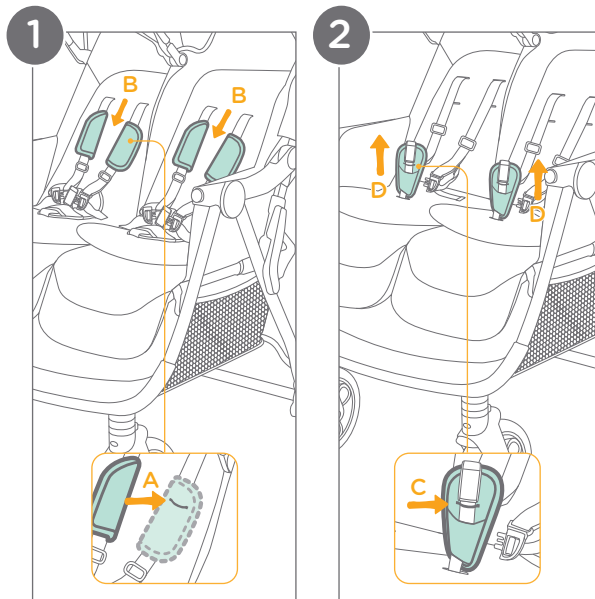
---

### 1 - Removing the Shoulder Harness Covers:

Release the restraint buckle and slide the shoulder harness buckle out of the waist belt buckle. Unthread each shoulder harness strap from the elastic (A) on the inside of the shoulder harness covers. Slide the harness covers off of the straps by pulling them down (B).

### 2 - Removing the Crotch Buckle Covers:

Unbuckle the harness straps. Unthread each center buckle from the elastic (C) on the inside of the crotch buckle covers. Lift the crotch buckle covers up to remove them (D).



## Using Reversible Seat Pad:

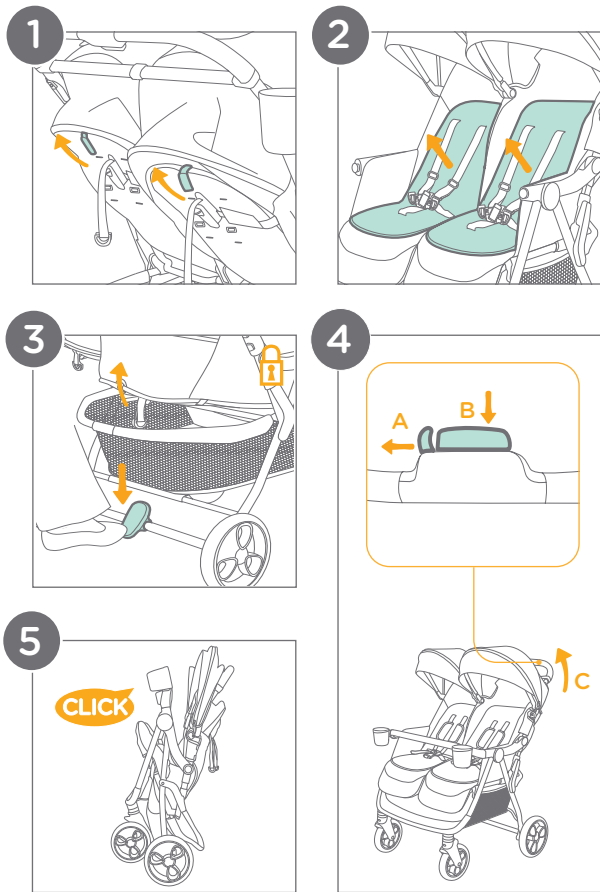
- 1 - To remove the reversible seat pad, unfasten the hook and loop fasteners from the top of the backrest.
- 2 - Release the restraint buckle and slide the shoulder harness buckle out of the waist belt buckle. Remove the shoulder harness covers and crotch buckle covers (see pg. 32). Unthread all the harness straps and buckles through their corresponding openings and lift the reversible seat pad up to remove it.

To reattach the reversible seat pad, repeat the above steps in reverse order.

## Folding Stroller:

**IMPORTANT:** ALWAYS close the canopy before folding the stroller. This prevents damage to the canopy fabric.

- 3 - Adjust both backrests to the fully upright position (see pg. 24) and lock the brake by pushing the brake lever downwards.
- 4 - Push the secondary fold lock outward (A) and squeeze the one-hand fold button (B). At the same time, pull the handlebar up and push it away from you (C) to fold the stroller.
- 5 - A “clicking” sound will confirm that the stroller is completely closed. The stroller frame will automatically lock into an upright position. The stroller will stand upright when resting on the basket.



## Using Accessories

**IMPORTANT:** ALWAYS fully close the canopy before attaching the car seat.

Ensure that the brakes are fully locked before attaching an infant car seat.

**NEVER** fold the stroller with the car seat attached. ALWAYS remove the car seat first.

**ONLY** attach an infant car seat in the infant car seat compatible stroller seat.

### Reclining the Backrest:

- 1 - Press the lever (A) in the center of the recline adjuster while pulling the backrest backward (B). **ALWAYS** set the backrest to its lowest position for infant car seat usage.

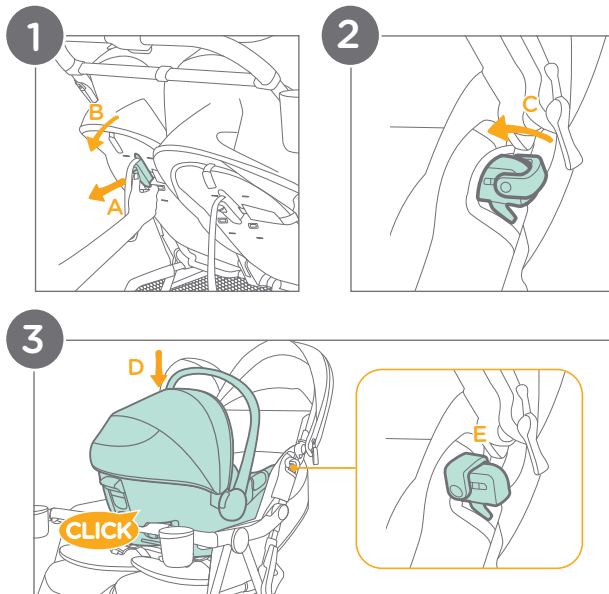
### Engaging the Infant Car Seat Lock:

- 2 - Find the infant car seat lock located near the base of the stroller handle. Engage the infant car seat lock by sliding its rotating part towards the inside of the stroller (C).

### Attaching a Joie Infant Car Seat:

- 3 - Insert the infant car seat onto the stroller frame (D), **OVER** the arm bar. Push down on the foot end of the infant car seat to slide it **UNDER** the engaged infant car seat lock (E).


A “clicking” sound will indicate that the car seat is properly locked in place.

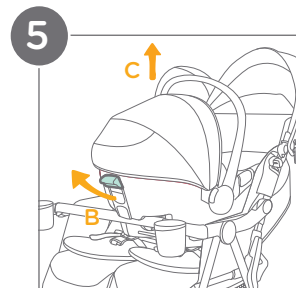
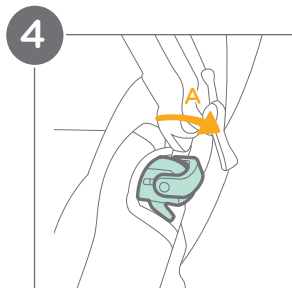


## Releasing the Infant Car Seat Lock:

- 4 - Release the infant car seat lock by sliding its rotating part towards the outside of the stroller (A).

**ALWAYS** keep the infant car seat lock engaged when an infant car seat is attached to the stroller.

-  The infant car seat may be installed or removed with the infant car seat lock engaged.



## 5 - Removing the Infant Car Seat:

Locate the release handle (B) on the car seat and squeeze it.

While squeezing the release handle, lift the infant car seat upwards (C) to detach it from the stroller.

**WARNING: Fall Hazard: ALWAYS** check that the infant car seat is securely attached to the stroller by pulling up on the car seat.

**ALWAYS** insert the infant car seat rear-facing. **NEVER** use it forward-facing.

**ALWAYS secure your child** with the infant car seat harness. Refer to your Joie infant car seat manual for information on properly restraining your child.

**ONLY** use Joie infant car seats with this stroller.

---

## Care & Maintenance:

---

### Cleaning:

**Reversible seat pad:** Refer to the care label for washing instructions. **DO NOT** use bleach.

**Stroller frame:** Wipe clean with a solution of warm water and mild household soap. Avoid bleach and harsh detergents.

**Plastic parts:** Periodically wipe clean with a damp cloth.

**Metal parts:** After contact with water, thoroughly dry the metal parts to prevent rust.

### Maintenance:

**Regular inspection:** Check the stroller regularly for loose or missing parts. Discontinue use if parts are loose or missing.

**Worn parts:** Replace any worn or damaged parts. Use only Joie replacement parts.

**Torn material or stitching:** Repair or replace torn fabric or stitching. Use only Joie replacement fabrics.

### Contact Joie Consumer Service at:

Email: [info.us@joiebaby.com](mailto:info.us@joiebaby.com) • Phone: 1-866-798-7866

### Storage:

**Extreme weather exposure:** Avoid excessive sun or heat exposure to prevent fading or warping of parts. Avoid storing outside or in cold conditions.

**Drying after use:** If the stroller gets wet, open the canopy and allow it to dry completely before storing.

### Wheel Maintenance:

**Squeaking wheels:** Apply a light coat of lubricating oil (e.g., silicone spray, anti-rust oil, or sewing machine oil) directly to the axle and wheel assembly to eliminate squeaking.

### Beach Use:

**After beach use:** Thoroughly clean the stroller to remove sand and salt from the mechanisms and wheels. This helps to prevent rust.

### Cup Holders:

Use mild detergent and warm water.

For a more thorough cleaning, remove the cup holders (see pg. 18).

The cup holders can be placed on the top rack of your dishwasher for convenient cleaning.



**Joie™**

**Effortlessly happy.**

Helping parents be their best  
with worry-free baby gear.