



## Instruction Manual

**rosemary™**

lightweight double stroller

Weight: up to 40 lb. (18 kg) per seat

Height: up to 43 in. (109 cm) per seat

---



## IMPORTANT!

Read all instructions before assembling and using the stroller.  
Keep instructions for future use.

---

# Contents:

---

- 3 Warranty Information
- 4 Warnings
- 8 Parts List
- 10 Opening Stroller
- 10 Attaching & Detaching Front Wheels
- 12 Attaching & Detaching Rear Wheels
- 12 Securing Canopies
- 14 Attaching & Detaching Arm Bar
- 16 Attaching & Detaching Cup Holders
- 18 Securing Footrest
- 18 Securing Storage Basket
- 20 Securing Your Child
- 24 Adjusting Recline
- 26 Adjusting Calf Support
- 28 Using Front Swivel Locks
- 28 Using Brakes
- 30 Using Canopy
- 30 Removing Harness & Buckle Covers
- 32 Using Reversible Seat Pad
- 32 Folding Stroller
- 34 Care & Maintenance

## Child Usage Requirements

This stroller is suitable for use with children who meet the following requirements:

Weight: up to 40 lb. (18 kg) per seat

Height: up to 43 in. (109 cm) per seat

---

# Warranty Information:

---

## Product Registration

Please fill in the information below. The model number and the date of manufacture are located on a label on the stroller frame. Fill out the prepaid registration postcard attached to the product and mail it today. To register your product online, please visit: <https://joiebaby.com/us/register-gear>

Model Name: \_\_\_\_\_

Model Number: \_\_\_\_\_

Date of Manufacture: \_\_\_\_\_

Date of Purchase: \_\_\_\_\_

register your  
product online



## Limited Warranty

We have purposely designed our high-quality products so that they can grow with both your child and your family. Because we stand by our product, our gear is covered by a custom limited warranty per product, starting from the day it was purchased. Please have the proof of purchase, model number, and date of manufacture available when you contact us. For warranty information, please visit: [www.joiebaby.com/us](http://www.joiebaby.com/us)

## Contact

### Joie Baby USA Consumer Service Contact Info.

Address: 70 Thousand Oaks Blvd., Morgantown, PA 19543

Email: [info.us@joiebaby.com](mailto:info.us@joiebaby.com)

Phone: 1-866-798-7866

---

# WARNING

---

Failure to follow these warnings and instructions could result in serious injury or death.

- **NEVER** leave children unattended.
- **Choking Hazard:** Keep small parts away from children. They may pose a choking hazard.
- **Suffocation Risk:** Remove all the plastic covers before using the stroller. Destroy these covers or keep them completely out of the reach of children.
- **If the stroller becomes damaged or broken, STOP USING IT IMMEDIATELY.** A damaged stroller can be unsafe.
- **DO NOT** modify the stroller in any way unless specified in the manual. Unauthorized changes can compromise safety.
- **Use ONLY Joie** genuine parts and accessories
- **Overloading, incorrect folding, and using accessories other than those approved by Joie** (e.g., child seats, bag hooks, rain covers, buggy boards, etc.), may damage or make the stroller unstable.

---

# WARNING

---

Failure to follow these warnings and instructions could result in serious injury or death.

- **Weight & Height Limits:** This stroller is only suitable for children up to 40 lb. (18 kg) and 43 in. (109 cm) tall in each seat. Exceeding these limits can cause excess wear and tear, potentially leading to an unstable stroller.
- **NEVER** transport more than one child in each seat.
- **To prevent a hazardous, unstable condition, DO NOT** place more than 10 lb. (4.5 kg) in the storage basket and **NEVER** place purses, shopping bags, parcels, or other items on the handlebar or canopy.
- **DO NOT** use the storage basket as a child carrier.
- **Avoid serious injury from falling or sliding out. ALWAYS** use the harness. After fastening the buckles, adjust the straps to get a snug fit around your child.
- **Avoid Finger Entrapment:** Use care when folding and unfolding the stroller. Ensure the stroller is fully erected and locked before allowing your child near the stroller.

---

# WARNING

---

Failure to follow these warnings and instructions could result in serious injury or death.

- **Strangulation Hazard: DO NOT** place items with a string around your child's neck, suspend strings from the stroller, or attach strings to toys.
- **DO NOT** let your child play with the stroller.
- **NEVER** allow your child to stand on the stroller.
- **The brakes MUST be engaged** when the stroller is stopped and when placing and removing your child.
- **Navigate curbs and rough ground carefully.** Repeated impact could cause damage to the stroller.
- **The stroller is to be used only at a walking speed** and is not intended for use while jogging, skating, etc.
- **NEVER** use the stroller on stairs or escalators. You may suddenly lose control of the stroller, or your child may fall out.

---

# WARNING

---

Failure to follow these warnings and instructions could result in serious injury or death.

- **This stroller is NOT a sleeping device.** Your children **MUST** be moved to an approved sleeping device if they need to sleep.
- **DO NOT** apply heat to dry the fabric. **ONLY** air dry the fabric.
- **DO NOT** leave the stroller exposed near a strong heat source, such as a radiator or open fire.
- **DO NOT** store the stroller in a damp place.
- **To avoid burns, NEVER** put hot liquids in the cup holders.
- **To prevent a hazardous, unstable condition, DO NOT** place more than 1 lb. (0.5 kg) in each cup holder.

---

## Parts List:

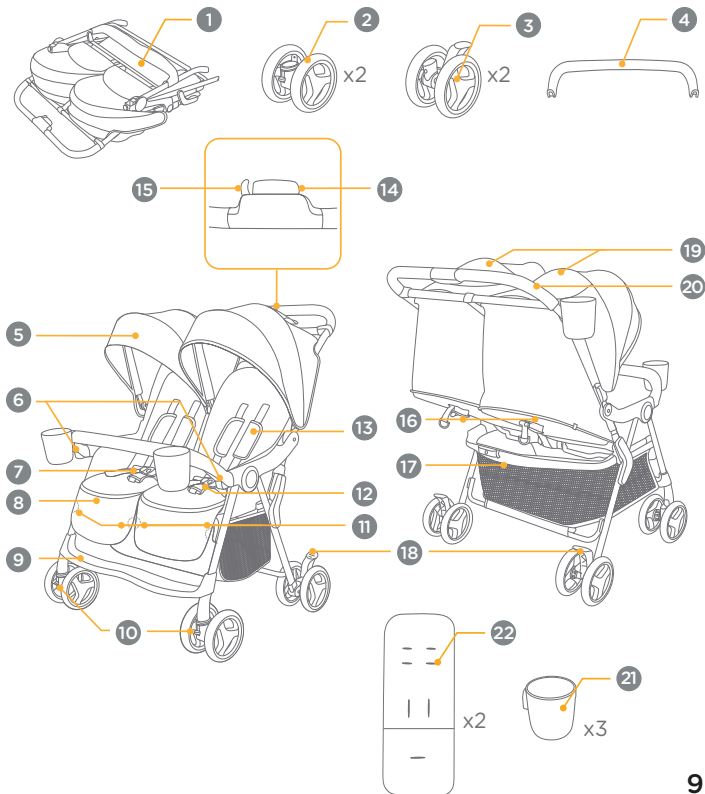
---

Please make sure there are no missing parts. Please contact Joie Consumer Service if anything is missing.

- 1 Stroller Frame
- 2 Front Wheel (x2)
- 3 Rear Wheel (x2)
- 4 Arm Bar
- 5 Canopy (x2)
- 6 Arm Bar Release Buttons
- 7 Crotch Buckle Cover
- 8 Calf Support (x2)
- 9 Footrest
- 10 Front Swivel Locks
- 11 Calf Support Adjustment Buttons
- 12 Restraint Buckle
- 13 Shoulder Harness Cover (x4)
- 14 One-Hand Fold Button
- 15 Secondary Fold Lock
- 16 Recline Adjusters
- 17 Storage Basket
- 18 Brakes
- 19 Canopy Window Covers
- 20 Handlebar
- 21 Cup Holder (x3)
- 22 Reversible Seat Pad (x2)



# Parts List:



---

## Opening Stroller:

---

- 1 - Push the secondary fold lock outward (A) and squeeze the one-hand fold button (B). At the same time, pull the stroller backward (C) to open. A “clicking” sound will confirm that the stroller is completely open.

**IMPORTANT: Safety Check:** Before using the stroller, **ALWAYS** ensure that it is fully open.

---

## Attaching & Detaching Front Wheels:

---

### 2 - Attaching the Front Wheels:

Insert the front wheels onto the front legs.

A “clicking” sound will confirm that the wheels are properly locked in place.

**IMPORTANT: Safety Check: ALWAYS** pull on the wheels after attachment to ensure that they are securely fastened.

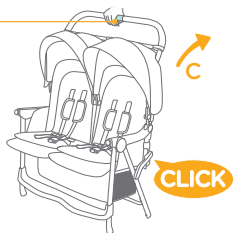
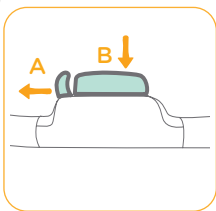
---

### 3 - Detaching the Front Wheels:

To remove the front wheels, press the release button (D) on the back of each wheel and pull the front wheel away (E).

**Tip** A thin tool, such as a screwdriver, may be used to depress the buttons for removal. Be careful not to push the buttons fully into the stroller frame.

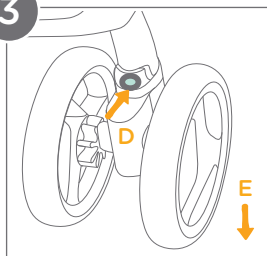
1



2



3



---

# Attaching & Detaching Rear Wheels:

---

## 1 - Attaching the Rear Wheels:

Insert the rear wheels into the rear legs, ensuring that the brakes face the back of the stroller.

A “clicking” sound will confirm that the wheels are properly locked in place.

**IMPORTANT: Safety Check: ALWAYS** pull on the wheels after attachment to ensure that they are securely fastened.

## 2 - Detaching the Rear Wheels:

To remove the rear wheels, press the release button (A) on the front of each wheel and pull the rear wheel away (B).

**Tip** A thin tool, such as a screwdriver, may be used to depress the buttons for removal. Be careful not to push the buttons fully into the stroller frame.

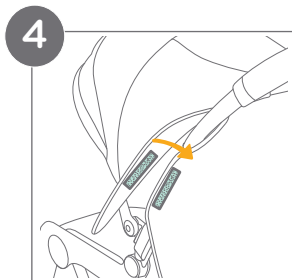
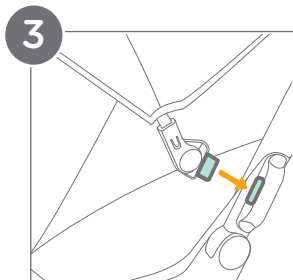
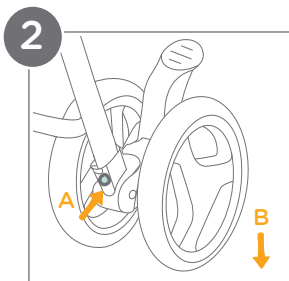
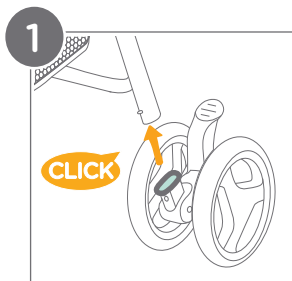
---

# Securing Canopies:

---

**3** - Slide the canopy mounts onto the mount tabs on the stroller frame.

**4** - Attach the two sets of hook and loop fasteners on the sides of each canopy. The canopies are not designed to be removed.



---

# Attaching & Detaching Arm Bar:

---

**IMPORTANT:** ALWAYS secure your child with the harness.

The arm bar is not a restraint and cannot prevent falls.

**DO NOT lift the stroller by the arm bar.** This can cause damage or injury.

**Use care** when attaching the arm bar onto the stroller with a child in the stroller.

**CAREGIVER MUST ALWAYS** help the child get into and out of the stroller.

## 1 - Attaching the Arm Bar:

Align the ends of the arm bar with the two arm bar mounts on the stroller frame.

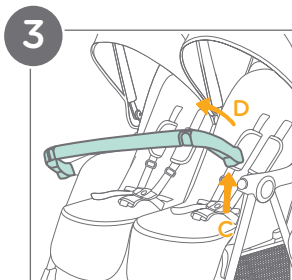
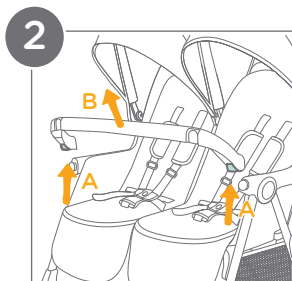
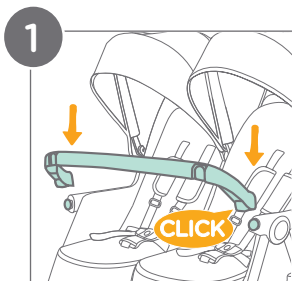
Push the arm bar down. A “clicking” sound will indicate that the arm bar is properly locked in place. Pull up on the arm bar to ensure that it is securely fastened.

## 2 - Detaching the Arm Bar:

Squeeze both arm bar release buttons simultaneously (A). Pull the arm bar up (B) to detach it from the stroller frame.

## 3 - Rotating the Arm Bar:

Press and hold one arm bar release button (C) while lifting up to rotate the arm bar at the arm bar mount on the other side of the stroller (D).



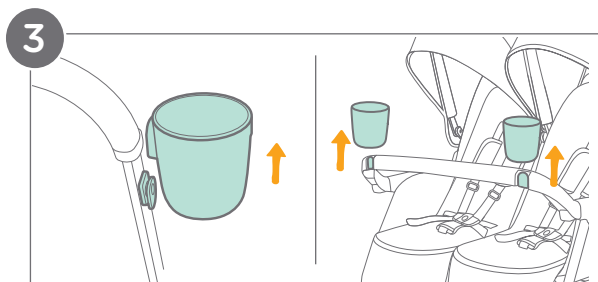
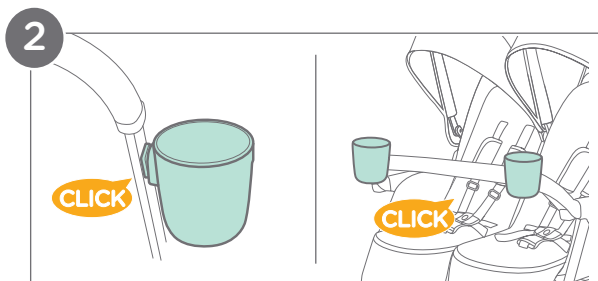
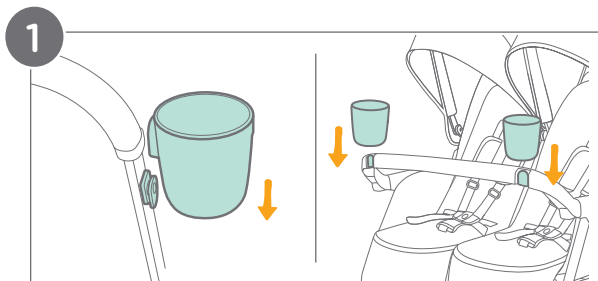
---

## Attaching & Detaching Cup Holders:

---

- 1 -** To attach, align each cup holder with the cup holder mounts on the stroller frame or arm bar and slide downward.
- 2 -** A “clicking” sound will indicate that the cup holder is properly locked in place. Pull up on the cup holder to ensure that it is securely fastened.
- 3 -** To detach each cup holder, pull upwards to slide it off of the mount.





---

## Securing Footrest:

---

- 1** - Push the footrest down to secure it.

A “clicking” sound will indicate that the footrest is properly locked in place. Pull up on the footrest to ensure that it is securely fastened.

---

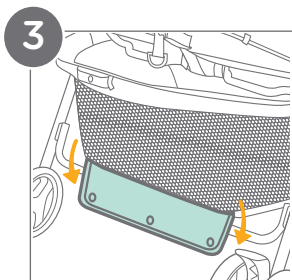
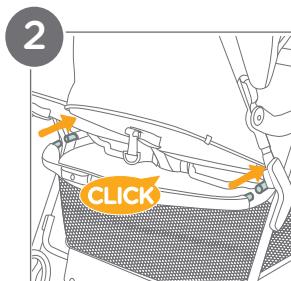
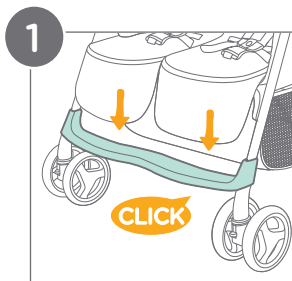
## Securing Storage Basket:

---

- 2** - Secure the storage basket tube by pushing the ends into their designated slots on the back of the stroller.

A “clicking” sound will indicate that the storage basket tube is properly locked in place. Pull back on the storage basket to ensure that it is securely fastened.

- 3** - On the bottom of the storage basket, wrap the fabric flap around the lower bar and attach the corresponding snaps on the underside of the basket.



---

# Securing Your Child:

---

## 1 - Releasing the Restraint Buckle:

Locate the button in the center of the restraint buckle and press it firmly to release the harness straps.

## 2 - Locking the Restraint Buckle:

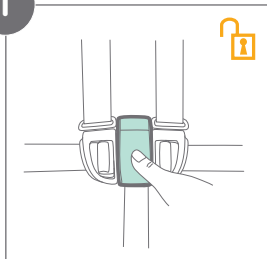
Slide the shoulder harness buckle into the waist belt buckle (A). Insert the combined buckles into the center buckle (B). A “clicking” sound will confirm that the restraint buckle is properly locked in place (C).

**IMPORTANT:** Secure your child with the harness: **NEVER** leave your child unbuckled in the stroller. A secure harness is essential to prevent them from falling or sliding out.

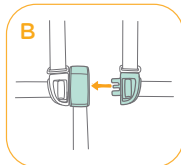
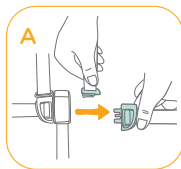
**Proper harness adjustment:** Ensure that the harness straps are snug but comfortable. The space between the child and the harness straps should be about a 1/2 inch.

**Shoulder strap positioning:** Never cross the shoulder straps. **ALWAYS** keep them straight over your child's shoulders to avoid putting pressure on the child's neck.

1



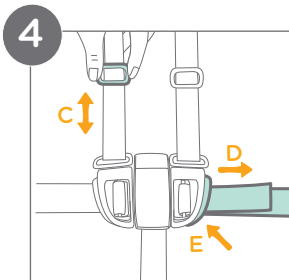
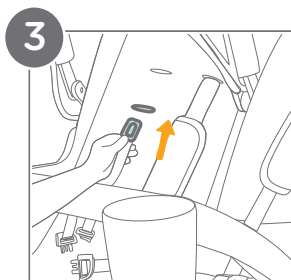
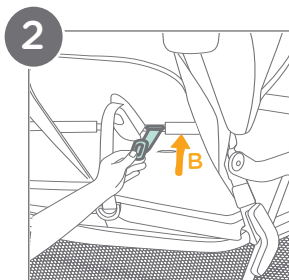
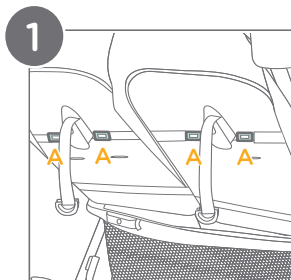
2



## Shoulder Harness Height Adjustment:

- 1** - Locate the shoulder harness anchors (A) on the back of each seat.
- 2** - Turn the harness anchor to be in line with the harness strap and thread it through the shoulder harness slot from back to front.
- 3** - Re-thread the harness anchor through the correct slot from front to back. Ensure that both sides are adjusted to slots at the same height.
- 4** - Use the slide adjuster (C) to adjust the length of the shoulder harness straps. Pull the waist harness strap (D) to tighten the waist harness. Press the button (E) on the waist belt buckle and pull to loosen the waist harness strap (D).

**IMPORTANT:** DO NOT adjust the harness anchors with a child in the stroller.



---

# Adjusting Recline:

---

## 1 - Reclining the Backrest:

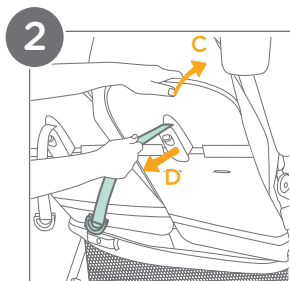
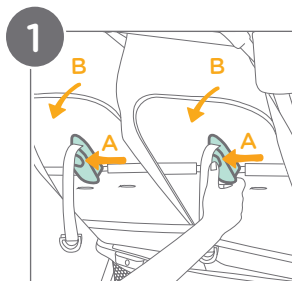
Press the button (A) in the center of the recline adjuster while pulling the backrest backward (B).

## 2 - Raising the Backrest:

Push the backrest forward (C) while pulling the webbing (D) at the end of the recline adjuster.

**IMPORTANT:** When making adjustments to the recline, make sure your child's head, arms, and legs are clear of moving parts and the stroller frame to prevent injury.





---

# Adjusting Calf Support:

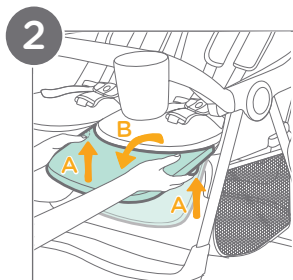
---

## **1 - Raising the Calf Support:**

Lift the 2-position calf support upwards. A “clicking” sound will indicate that it is properly locked in place.

## **2 - Lowering the Calf Support:**

Squeeze the calf support adjustment buttons on both sides of the calf support (A) simultaneously and gently rotate the calf support downward (B).



---

## Using Front Swivel Locks:

---

- 1 - Push the front swivel locks upwards to fix the wheels in a straight position. This will prevent them from swiveling freely. Push the locks back down to release them.

**Tip** It is recommended to use the swivel locks on uneven surfaces.

---

## Using Brakes:

---

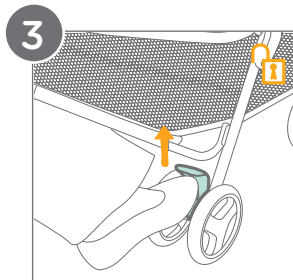
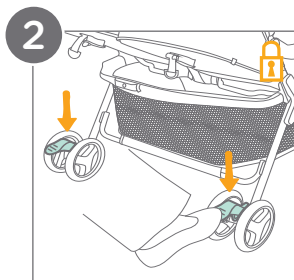
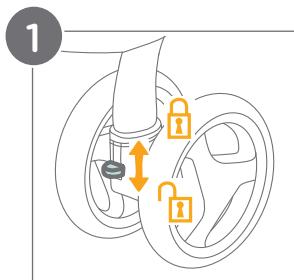
### 2 - Locking the Brakes:

Locate **BOTH** brakes on the rear wheels. Step firmly on each lever to lock them.

### 3 - Unlocking the Brakes:

Lift **BOTH** brakes upwards to unlock them.

**WARNING:** ALWAYS apply **BOTH** brakes whenever the stroller is stopped. Gently push the stroller to ensure that the brakes are securely engaged.



---

## Using Canopy:

---

### 1 - Opening and Closing the Canopy:

To open, pull the canopy forward towards the front of the stroller. To close, push the canopy back.

### 2 - Ventilation:

For airflow, flip up the canopy window covers.

---

## Removing Harness & Buckle Covers:

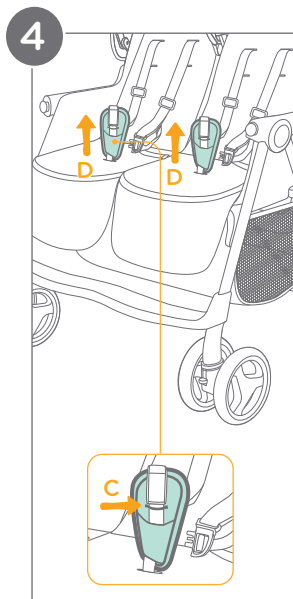
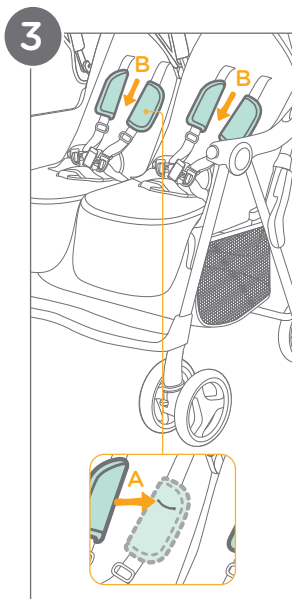
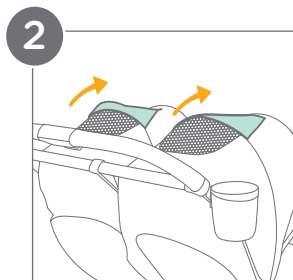
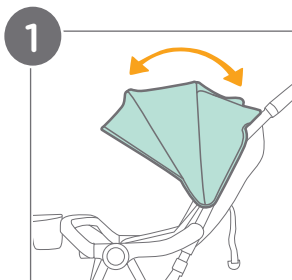
---

### 3 - Removing the Shoulder Harness Covers:

Release the restraint buckle and slide the shoulder harness buckle out of the waist belt buckle. Unthread each shoulder harness strap from the elastic (A) on the inside of the shoulder harness covers. Slide the harness covers off of the straps by pulling them down (B).

### 4 - Removing the Crotch Buckle Covers:

Unbuckle the harness straps. Unthread each center buckle from the elastic (C) on the inside of the crotch buckle covers. Lift the crotch buckle covers up to remove them (D).



---

## Using Reversible Seat Pad:

---

- 1 - To remove the reversible seat pad, release the restraint buckle and slide the shoulder harness buckle out of the waist belt buckle. Remove the shoulder harness covers and crotch buckle covers (see pg. 30). Unthread all the harness straps and buckles through their corresponding openings and lift the reversible seat pad up to remove it.

Flip the reversible seat pad over to change the color.

**To reattach the reversible seat pad, repeat the above steps in reverse order.**

---

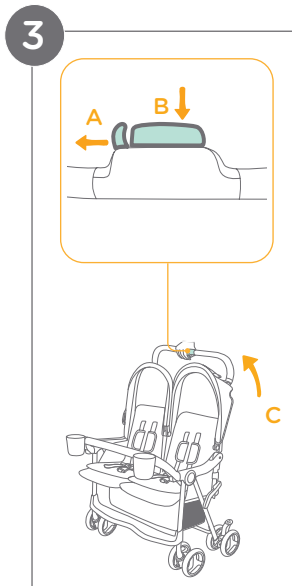
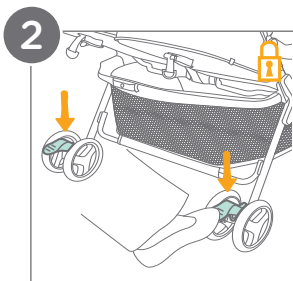
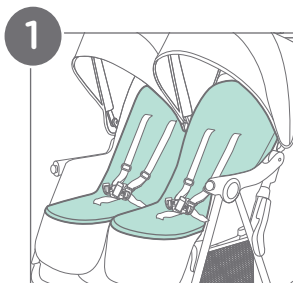
## Folding Stroller:

---

**IMPORTANT:** ALWAYS close the canopy before folding the stroller. This prevents damage to the canopy fabric.

- 2 - Lock the brakes by stepping firmly on both levers.
- 3 - Push the secondary fold lock outward (A) and squeeze the one-hand fold button (B). At the same time, pull the handlebar up and push it away from you (C) to fold the stroller.
- 4 - A “clicking” sound will confirm that the stroller is completely closed. The stroller frame will automatically lock into an upright position. The stroller will stand upright when resting on the basket.





---

## Care & Maintenance:

---

### Cleaning:

**Reversible seat pad:** Refer to the care label for washing instructions. **DO NOT** use bleach.

**Stroller frame:** Wipe clean with a solution of warm water and mild household soap. Avoid bleach and harsh detergents.

**Plastic parts:** Periodically wipe clean with a damp cloth.

**Metal parts:** After contact with water, thoroughly dry the metal parts to prevent rust.

### Maintenance:

**Regular inspection:** Check the stroller regularly for loose or missing parts. Discontinue use if parts are loose or missing.

**Worn parts:** Replace any worn or damaged parts. Use only Joie replacement parts.

**Torn material or stitching:** Repair or replace torn fabric or stitching. Use only Joie replacement fabrics.

**Contact Joie Consumer Service at:**

Email: [info.us@joiebaby.com](mailto:info.us@joiebaby.com) • Phone: 1-866-798-7866

## **Storage:**

**Extreme weather exposure:** Avoid excessive sun or heat exposure to prevent fading or warping of parts. Avoid storing outside or in cold conditions.

**Drying after use:** If the stroller gets wet, open the canopy and allow it to dry completely before storing.

## **Wheel Maintenance:**

**Squeaking wheels:** Apply a light coat of lubricating oil (e.g., silicone spray, anti-rust oil, or sewing machine oil) directly to the axle and wheel assembly to eliminate squeaking.

## **Beach Use:**

**After beach use:** Thoroughly clean the stroller to remove sand and salt from the mechanisms and wheels. This helps to prevent rust.

## **Cup Holders:**

Use mild detergent and warm water.

For a more thorough cleaning, remove the cup holders (see pg. 16).

The cup holders can be placed on the top rack of your dishwasher for convenient cleaning.



**Effortlessly happy.**

Helping parents be their best  
with worry-free baby gear.