

Joie™

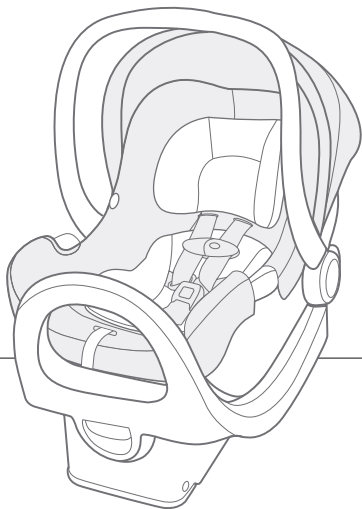
Instruction Manual

rue™

with Base

Height: less than 30 in. (76 cm)

Weight: 4 to 30 lb. (1.8 to 13.6 kg)



installation
videos



IMPORTANT!

Read the instructions in this manual before use of the product.

Keep this manual for future use.

IS-2024-07-11

Contents:

- 3** Important
 - Welcome to the Joie Family!
 - If You Need Help
 - Register Your Child Restraint
- 5** Child Requirements
- 6** Warnings
- 14** Best Practices
- 15** Vehicle Compatibility
- 16** Vehicle Belts
- 18** Choose Your Installation
- 22** Parts List
- 24** Canopy
- 24** Handle Adjustment
- 26** Head Support
- 28** Infant Insert
- 30** Adjusting Harness Height
- 34** Crotch Buckle Adjustment
- 36** Securing Child in Seat
- 40** Adjusting Recline
- 42** Base Install LATCH
- 46** Removing and Storing LATCH
- 48** Base Install Lap/Shoulder Belt
- 52** Base Install Lap Belt ONLY
- 56** Attaching and Removing Carrier from Base
- 58** Carrier Install Lap/Shoulder Belt
- 60** Carrier Install Lap Belt ONLY
- 62** Install in an Aircraft
- 64** Attaching and Removing Carrier from Stroller
- 66** Removing Canopy & Softgoods
- 70** Care and Maintenance

Important:

Welcome to the Joie Family!

Ensure your child's safety - **READ THIS MANUAL CAREFULLY!**

Although no child restraint can promise to protect in every situation, using it correctly reduces the chance of serious injury. Even if the child restraint seems easy, follow the step-by-step instructions in this book.

Store this instruction manual in the pocket located behind the softgoods near the lap belt guide on your child's left side.

If You Need Help

If you have questions in the U.S.A. about parts, use, or maintaining your child restraint, contact our Consumer Service Department for assistance. To ensure a speedy response, please have your child restraint's model number and date of manufacture ready.

You can find the information on the manufacturer label on the child restraint.

Joie Baby USA Consumer Service Contact Info

Address: 70 Thousand Oaks Blvd, Morgantown, PA 19543

Email: info.us@joiebaby.com

Phone: 1-866-798-7866

(Important information continued on pg. 4)

Important:

Register this Child Restraint

Child restraints could be recalled for safety reasons. You must register this restraint to be reached in a recall. Send your name, address, e-mail address if available, and the restraint's model number and manufacturing date to **70 Thousand Oaks Blvd Morgantown, PA 19543**, call **1-866-798-7866**, or register online at:

www.joiebaby.com/carseatregistration

For recall information, call the U.S. Government's Vehicle Safety Hotline at **1-888-327-4236 (TTY: 1-800-424-9153)** or go to **www.NHTSA.gov**.

For future reference, record the following information about your child restraint in case you move, lose your registration card, or need to reference it for any reason. You can find this information on the registration card or on the manufacturer label located on the child restraint:

Model Name: _____

Model Number: _____

Date of Manufacture: _____

Date of Purchase: _____

Child Requirements:

This child restraint is for a child that meets **BOTH** of the following requirements:

Weight: 4 to 30 lb. (1.8 to 13.6 kg)

Height: less than 30 in. (76 cm)

STOP using this child restraint as soon as the child reaches the max. weight **OR** the max. height.

NEVER use this child restraint forward-facing.

According to accident statistics, children are safer when properly restrained in the rear seating positions than in the front seating positions. **Children should ride rear-facing as long as possible, until at least 2 years old.**

Preterm or Low Birth Weight Infants

To ensure the safety of your preterm or low birth weight infant (born before 37 weeks or weighing less than 5 lb. (2.3 kg), Joie recommends following the AAP's guidelines and consulting your doctor or hospital staff before the child's first car or airplane trip. A medical evaluation is crucial to check for breathing and heart rate concerns when traveling in a rear-facing child restraint.

For additional information or to have your child restraint inspected by a certified professional, you can visit the Safe Kids Worldwide website at www.safekids.org

⚠️ WARNING!

DEATH OR SERIOUS INJURY can occur if you fail to follow the warnings, instructions, and labels on the child restraint.

- Read **ALL INSTRUCTIONS** before use of the child restraint.
- Read the vehicle owner's manual for information on child restraint installation.
- **KEEP INSTRUCTIONS FOR FUTURE USE.**
- Failure to follow these instructions and child restraint's labels can result in child striking the vehicle's interior during a sudden stop or crash.
- **DO NOT** allow anyone who has not read the instruction manual to install or use this child restraint.
- **DO NOT** place rear-facing child restraint on front seat with air bag. **DEATH OR SERIOUS INJURY CAN OCCUR.** The back seat is the safest place for children 12 and under.



WARNING!

DEATH OR SERIOUS INJURY can occur if you fail to follow the warnings, instructions, and labels on the child restraint.

- If an air bag inflates, it can hit the child and child restraint with great force and cause serious injury or death to your child. Review your vehicle owner's manual for more information about air bags and child restraint use.
- Do not use the child restraint if it is damaged or broken or if parts are missing.
- **NEVER** use a child restraint that has been involved in a **MODERATE** or **SEVERE** crash.
- Use only with a child that weighs between 4 - 30 lb. (1.8 - 13.6 kg) and height is less than 30 in. (76 cm).
- Stop using this child restraint as soon as the child reaches the max. weight OR the max. height.

WARNING!

DEATH OR SERIOUS INJURY can occur if you fail to follow the warnings, instructions, and labels on the child restraint.

- **NEVER** secure this child restraint using an inflatable seat belt. Move to a vehicle seat that does not have an inflatable seat belt or install using LATCH.
- Your child's safety is your responsibility. **NEVER** leave child unattended.
- Before each use, always check the child restraint to make sure it is tightly secured to the vehicle seat.
- According to accident statistics, children are safer when properly restrained in the rear seating positions than in the front seating positions.
- If your vehicle does not have a back seat, review your vehicle owner's manual.
- Vehicle seat belt system **MUST** hold child restraint securely. Not all vehicle seat belts can be used with a child restraint.

WARNING!

DEATH OR SERIOUS INJURY can occur if you fail to follow the warnings, instructions, and labels on the child restraint.

- Select a suitable location for the child restraint in your vehicle. Secure child restraint with a vehicle seat belt or lower anchor attachment that is properly routed as shown in this manual.
- **NEVER** attach two lower anchor connectors to one vehicle lower anchor point unless specifically allowed by the vehicle manufacturer.
- Rear-facing child restraint must be properly leveled. An improperly reclined child restraint can result in breathing difficulties, injury, or ejection.
- **DO NOT** remove lower anchor system from child restraint. If using vehicle seat belt to secure child restraint, lower anchor connectors must be properly stored.
- **DO NOT** allow child restraint to contact the vehicle interior (side of car door or seat in front).

⚠️ WARNING!

DEATH OR SERIOUS INJURY can occur if you fail to follow the warnings, instructions, and labels on the child restraint.

- **STRANGULATION HAZARD** Children have **STRANGLER** in loose or partially buckled harness straps. Fully restrain the child even when child restraint is used outside the vehicle.
- **SUFFOCATION HAZARD** child restraint can roll over on soft surfaces and suffocate child. Never place child restraint on beds, sofas, or other soft surfaces.
- **FALL HAZARD** Child's activity can move child restraint. **NEVER** place child restraint on counter tops, tables, or any other elevated surface. Always stay within arm's reach whenever child restraint is not on floor/ground.
- **FALL HAZARD** The child restraint can fall from a shopping cart. **DO NOT** use on shopping cart.



WARNING!

DEATH OR SERIOUS INJURY can occur if you fail to follow the warnings, instructions, and labels on the child restraint.

- Be sure the handle is locked into the carrying position before lifting child restraint.
- **DO NOT** use child restraint if it has frayed or cut harness straps or is damaged in any way. To find out if damaged parts are replaceable, call 1-866-798-7866.
- **NEVER** modify any part of the child restraint.
- **DO NOT** attach additional padding, toys, or other devices unless made by Joie and described in these instructions. Use only approved accessories. Unapproved items can injure your child and may void the warranty.
- **NEVER** leave child restraint unsecured in your vehicle, even when it is unoccupied. In a crash, it could become a projectile and injure other vehicle occupants.

WARNING!

DEATH OR SERIOUS INJURY can occur if you fail to follow the warnings, instructions, and labels on the child restraint.

- **NEVER** use clothing or blankets that interfere with providing a properly tightened harness. An unsecured or improperly harnessed child can come out of the restraint during a crash.
- Place blankets over child **AFTER** harness has been properly tightened.
- Only use with Joie strollers or appropriate Joie adapters designed for use with other strollers.

This child restraint system conforms to all applicable Federal Motor Vehicle Safety Standards.

WARNING!

NEVER use a child restraint that has been involved in a **MODERATE** or **SEVERE** crash.

Even if there is no visible damage, the child restraint's internal structure may be compromised and may not protect your child in a future crash.

Child restraint is still usable after a minor incident in which all of the following apply:

- 1) The vehicle was able to be driven away from the crash site.
- 2) The vehicle door nearest the child restraint was **NOT** damaged.
- 3) None of the passengers in the vehicle sustained any injuries in the crash.
- 4) If the vehicle has air bags, the air bags did not deploy during the crash; and
- 5) There is no visible damage to the child restraint.

Contact Joie Consumer Service with any questions or concerns.

Best Practices:

Expiration:

DO NOT USE THIS CHILD RESTRAINT 7 YEARS AFTER ORIGINAL PURCHASE.

Stop using it after that date and dispose of it. Check the label on the child restraint for the manufacture date.

Hot Weather Warning:

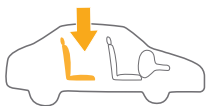
Child restraints can become extremely hot in the sun or warm weather. Always check the seat temperature before placing your child inside to avoid burns.

Clothing:

For proper harness fit and child safety, avoid bulky clothing like heavy jackets or snowsuits when using the child restraint. Ensure the harness is snug but comfortable on your child.

Vehicle Compatibility:

You **MUST** read and understand **ALL** child restraint-related instructions and warnings in your vehicle owner's manual to correctly and safely use this child restraint in your vehicle.



This child restraint can **ONLY** be installed on vehicle seats that face forward. **DO NOT** install on seats that face to the sides or rear of the vehicle.



DO NOT place rear-facing child restraint on front seat with air bag. **DEATH OR SERIOUS INJURY CAN OCCUR.** The back seat is the safest place for children 12 and under.

If your vehicle is equipped with front passenger side air bags, check your vehicle owner's manual for child restraint installation instructions.



NEVER attach two lower anchor connectors to one vehicle lower anchor point unless specifically allowed by the vehicle manufacturer.

DO NOT use both the vehicle seat belt and lower anchor attachment at the same time.

Vehicle Belts:

The following vehicle belts **CANNOT BE USED** with your child restraint. Install with lower anchors instead.

1 - Motorized Belts (Automatic)

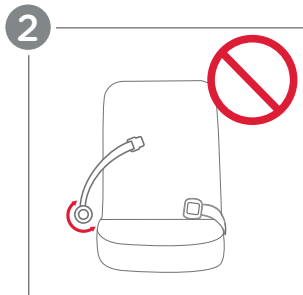
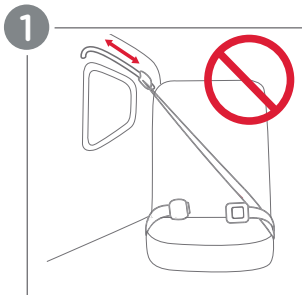
These should not be used unless the shoulder belt can be removed, the lap belt is locked, and use is allowed by the vehicle manufacturer.

2 - Non-Locking (ELR) Lap Belts

This belt only locks in a crash or sudden stop and should only be used with a belt-shortening clip.

3 - Airbag/Inflatable Belts

4 - Door Mounted Belts



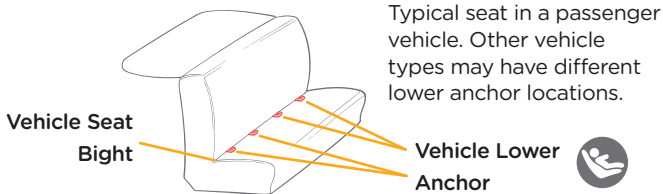
Choose Your Installation:

This child restraint can be installed in your vehicle using either the vehicle seat belt OR the lower anchor attachment (LATCH). Both are equally safe to use. **INSTALL USING ONLY ONE METHOD.**

LATCH Install:

Lower Anchors and Tethers for Children:

The LATCH system, or lower anchor attachment and top tether, allow you to securely attach your child restraint in your car without using the vehicle seat belt. All 2003 and newer model year vehicles are required to have a LATCH system, although some manufacturers began including LATCH earlier. Some vehicle owner's manuals use the term ISOFIX to identify the LATCH system.



Review your vehicle owner's manual for exact location and use.

Vehicle Belt Install:

Vehicle Seat Belt:

Refer to your vehicle owner's manual to determine if the belts in your vehicle lock by switching the seat belt's retractor OR have a locking latch plate that locks the vehicle's seat belt.

Vehicle Seat Belt Terms:

Retractor

A device that winds up the unused vehicle seat belt. It is often hidden inside the panels on the walls of the vehicle or in the vehicle seatback.

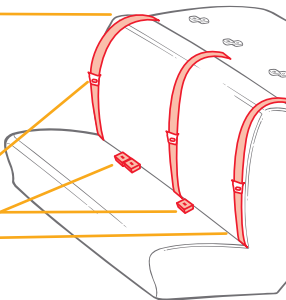
Latch Plate

The male end of the seat belt with the metal tongue.

Buckle

Seat Bight

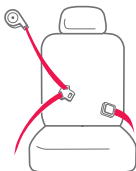
The crease where the vehicle seatback and seat bottom meet.



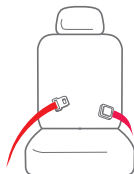
Review your vehicle owner's manual for exact location and use.

Identify Your Seat Belt Type:

The vehicle seat belt types that can be used with this child restraint.

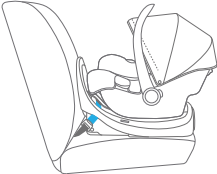
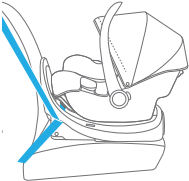
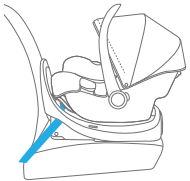


Lap/Shoulder Belt
3 connections points.

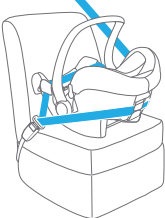
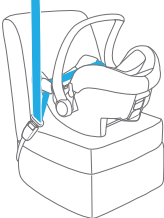
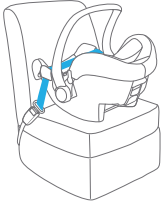


Lap Belt Only
2 connection points.

Choose Your Installation:

Installation Method	Suitable For
<p data-bbox="83 238 285 268">WITH BASE</p> <p data-bbox="467 310 576 382">Install pg. 42</p>  <p data-bbox="403 636 508 663">LATCH</p> <p data-bbox="218 721 327 793">Install pg. 48</p>  <p data-bbox="63 1054 337 1084">Lap/Shoulder Belt</p> <p data-bbox="498 721 607 793">Install pg. 52</p>  <p data-bbox="368 1054 570 1084">Lap Belt Only</p>	<p data-bbox="648 557 948 679">Child height less than 30 in. (76 cm)</p> <p data-bbox="648 731 891 856">Child weight 4 - 30 lb. (1.8 - 13.6 kg)</p>

Choose Your Installation:

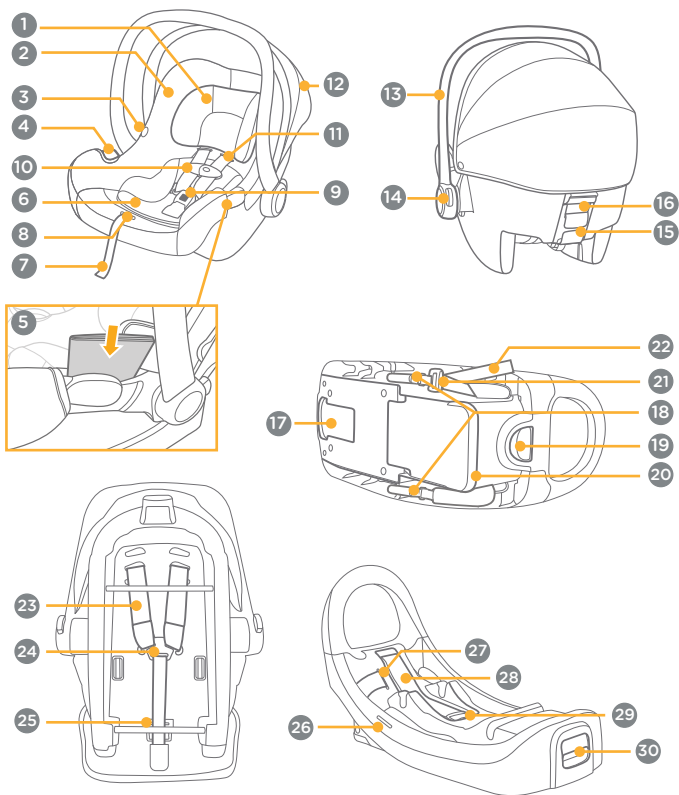
Installation Method	Suitable For
<p data-bbox="63 238 339 268">WITHOUT BASE</p> <p data-bbox="169 294 277 365">Install pg. 58</p>  <p data-bbox="58 692 327 755">Lap/Shoulder Belt Option 1 (suggested)</p> <p data-bbox="453 294 561 365">Install pg. 58</p>  <p data-bbox="344 692 614 755">Lap/Shoulder Belt Option 2</p> <p data-bbox="456 784 564 855">Install pg. 60</p>  <p data-bbox="370 1172 578 1202">Lap Belt Only</p>	<p data-bbox="655 557 954 681">Child height less than 30 in. (76 cm)</p> <p data-bbox="655 734 899 858">Child weight 4 - 30 lb. (1.8 - 13.6 kg)</p>

Parts List:

Please make sure there are no missing parts. Please contact Joie Customer Service if anything is missing.

- | | |
|---|--------------------------------|
| 1 Head Support | 17 Instruction Storage |
| 2 Seat Pad | 18 Lower Anchor Connectors |
| 3 Stroller Release Button | 19 Base Recline Lever |
| 4 Lap Belt Guide | 20 Base Recline Foot |
| 5 Instruction Storage (behind seat padding) | 21 Lower Anchor Strap Adjuster |
| 6 Infant Insert | 22 Lower Anchor Strap |
| 7 Adjustment Webbing | 23 Harness Straps |
| 8 Harness Adjustment Button | 24 Harness Splitter Plate |
| 9 Crotch Buckle | 25 Buckle Metal Clip |
| 10 Chest Clip | 26 Level Indicator |
| 11 Harness Straps | 27 LATCH Belt Path |
| 12 Canopy | 28 Lock-Off |
| 13 Handle | 29 Lock-Off Release Lever |
| 14 Handle Adjustment Button | 30 Carrier Release Button |
| 15 Shoulder Belt Guide | |
| 16 Stroller Release Button | |

Parts List:



Canopy:

1 - For added coverage, the canopy can be adjusted.

Handle Adjustment:

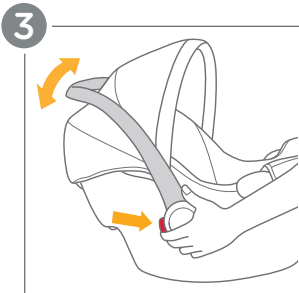
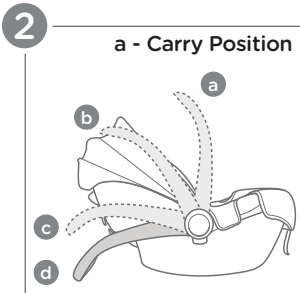
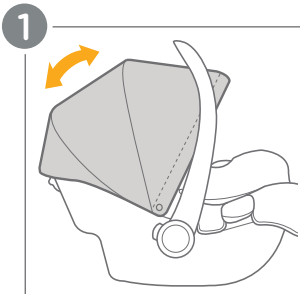
2 - The carry handle has 3 locked positions and 1 convenience position.

- a. Carry** - Use this position when carrying and installing in your vehicle.
- b. Convenience** - Use when removing your child from the child restraint. This position does not lock.
- c. Travel** - Can be used when installing in your vehicle.
- d. Stand** - Use to prevent child restraint from rocking.

3 - To adjust the handle position, squeeze the handle adjustment buttons on both sides of the child restraint and rotate the handle until it clicks into a locked position.

WARNING: Make sure handle is locked in the carry position before lifting child restraint. An unlocked handle could move unexpectedly, causing injury to the child.

Joie recommends to have the handle in the carry position when in the vehicle. This allows space between front/rear seats and easier install/removal of the child restraint.



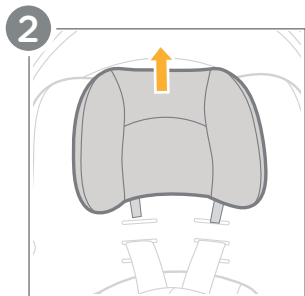
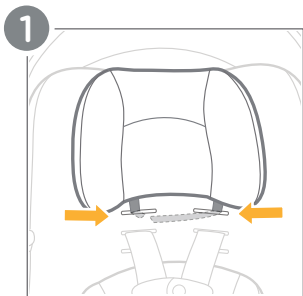
Head Support:

The head support can be used, as needed, to provide a snug fit for small babies. The head support can be removed when your child has outgrown it.

To Remove Head Support:

- 1 - Locate the hook and loop fasteners behind the seat fabric. Carefully pull apart the fastener to detach the head support.
- 2 - Gently pull the head support upwards to remove it completely.

WARNING: The head support straps must **NOT** go through the same slots as the harness and should only be used in the top two harness slot positions.



Infant Insert:

The infant insert can be used, as needed, to provide a snug fit for small babies.

The low birth weight pillow located inside the infant insert can be used for even smaller babies.

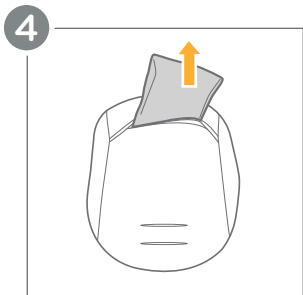
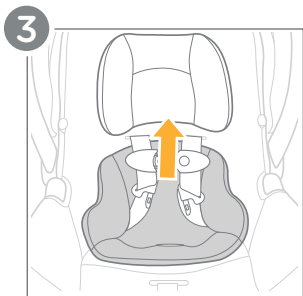
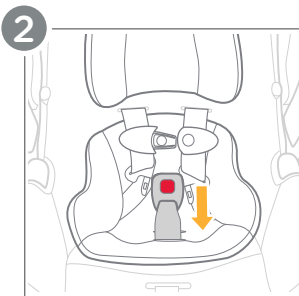
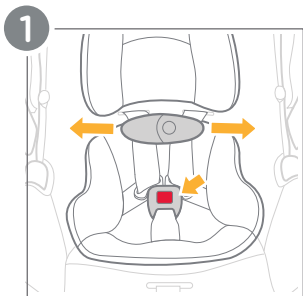
To Remove Infant Insert:

- 1 - Unbuckle the harness by pressing the release buttons on the crotch buckle and chest clip.
- 2 - Thread the crotch strap through the slot of the infant insert.
- 3 - Gently pull the infant insert upwards to remove it completely.

IMPORTANT: The infant insert can be used for smaller babies, but **MUST** be removed once the child reaches 11 lb. (5 kg).

Removing Low Birth Weight Pillow:

- 4 - To remove the low birth weight pillow, slide it out of the pocket on the back side of the infant insert.



Check Harness Height Fit:

For safety and comfort, ensure the harness straps fit snugly on your child's shoulders and are positioned at or just below their shoulders.

1 - Have your child sit in the child restraint with the harness buckled. The harness straps should be at or just below the child's shoulders. If the harness straps are not at or just below the shoulders, adjust the harness height.

Adjusting Harness Height:

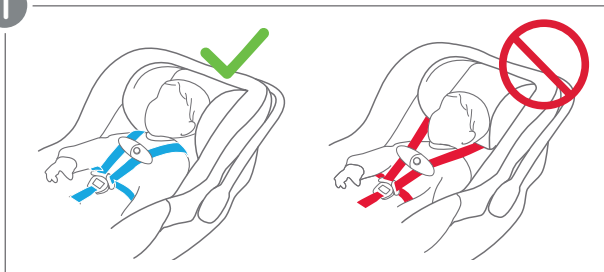
2 - Remove the child from the child restraint and loosen the harness straps by pressing the harness adjustment button (a) and pulling on the straps (b).

3 - Turn the child restraint over and locate the metal splitter plate where the harness straps come together. Carefully remove **BOTH** harness straps from the metal splitter plate.

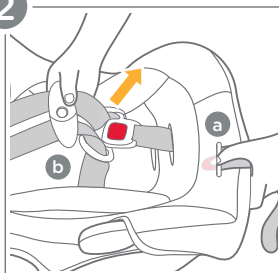
4 - Turn the child restraint back over and pull **BOTH** harness straps out through the front of the child restraint.

(Adjusting Harness Height continued on pg. 32)

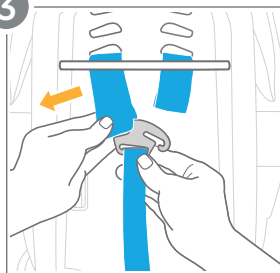
1



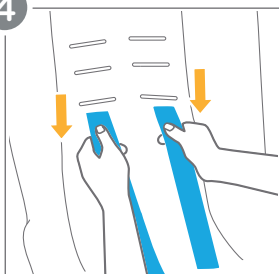
2



3



4



Adjusting Harness Height: (cont.)

5 - Re-thread the harness straps through the correct slot on the front of the child restraint.

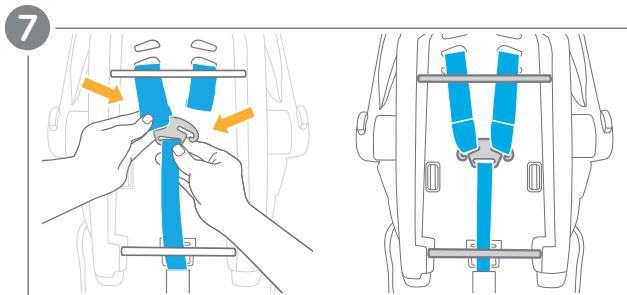
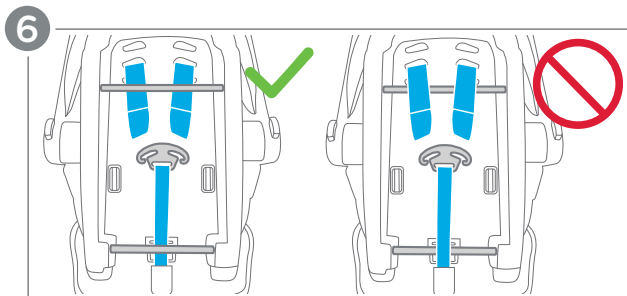
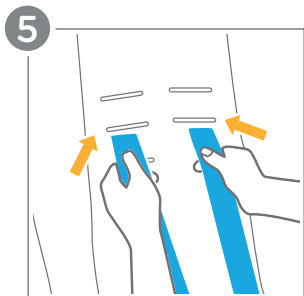
6 - Turn the child restraint over and ensure the harness straps pass under the cross bars.

WARNING: Make sure harness straps are not twisted before attaching to the splitter plate.

7 - Once you've adjusted the harness straps to the desired height, re-attach **BOTH** harness strap loops into the metal splitter plate.

Check the Final Fit:

Have your child sit back in the child restraint and repeat **Step 1 - Check Harness Height Fit** to ensure the harness is snug and positioned correctly at or just below their shoulders.

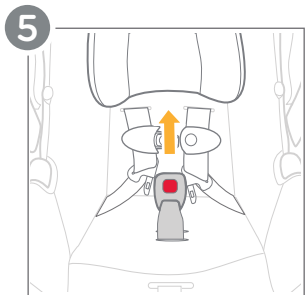
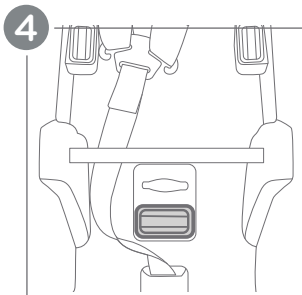
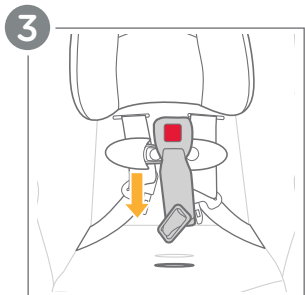
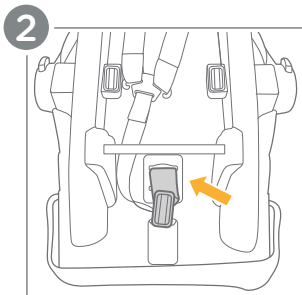
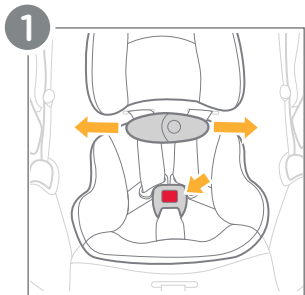


Crotch Buckle Adjustment:

For safety and comfort, the crotch buckle can be adjusted when it is underneath your child and no longer in front of them.

- 1** - Unbuckle the harness by pressing the release buttons on the crotch buckle and chest clip.
- 2** - Flip the child restraint over and locate the D-Ring on the crotch buckle strap. Rotate the D-Ring sideways and push it through the buckle adjustment slot.
- 3** - Flip the child restraint back over and pull the crotch buckle up out of the seat. Rotate the D-Ring sideways and push it through the new crotch buckle adjustment slot in the seat.
- 4** - Flip the child restraint over and make sure the D-Ring is laying **FLAT** against the base of the seat.
- 5** - Pull up on the crotch buckle to make sure that it is secure.

TIP: You may need to loosen the harness straps before adjusting the crotch buckle to give you access to the D-Ring.



Securing Child in Seat:

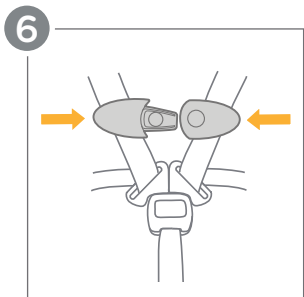
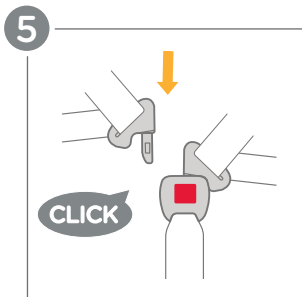
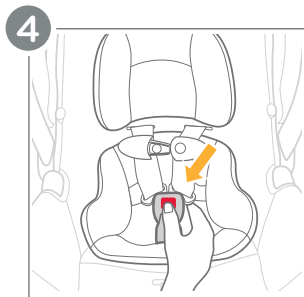
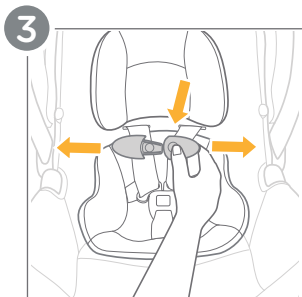
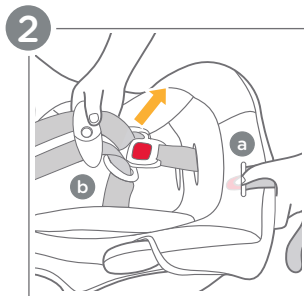
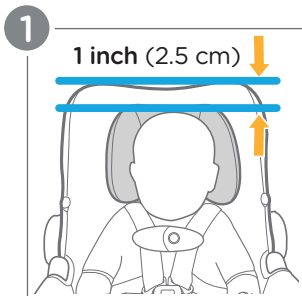
- 1** - The top of child's head **MUST** be at least 1 in. (2.5 cm) below the top of the child restraint.
- 2** - Loosen the harness straps by pressing the harness adjustment button (a) and pulling on the straps (b).
- 3** - Press the release button on the chest clip to separate.
- 4** - Press the release button to remove the buckle tongues from crotch buckle and spread harness straps apart. Place your child in the child restraint.

WARNING: Child must be in a seated position against both the back and bottom of the seat with no gap behind the child. Do not allow child to slouch.

Harness straps must be at or just below child's shoulders to avoid injury.

- 5** - Gently guide child's arms through the harness straps. Insert buckle tongues into the crotch buckle. Listen for a **CLICK**. Pull on crotch buckle to make sure it is properly latched.
- 6** - Snap the chest clip together and temporarily slide down towards buckle for tightening the harness straps.

(Securing Child in Seat continued on pg. 38)



Securing Child in Seat: (cont.)

7 - Pull on the adjustment strap to tighten the harness. Slide any excess strap length from the child's waist up through the buckle towards the shoulders, and repeat this step until the harness is secure.

TIP: The harness should be snug around your child's waist and shoulders. It may take a few adjustments, so be patient!

8 - Position the chest clip at child's armpit level.

Check Setup!

Harness is snug - A snug harness cannot be pinched vertically and should not allow any slack. If harness straps are not snugly adjusted, child may be ejected from child restraint in the event of a crash.

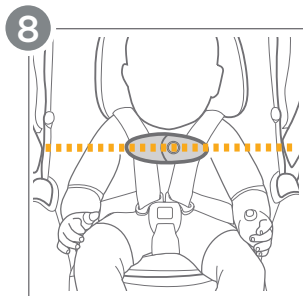
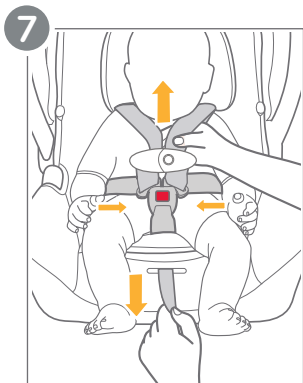
IMPORTANT: A snug strap should not allow any slack. It lies in a relatively straight line without sagging. It does not press on the child's flesh or push the child's body into an unnatural position.

Chest clip and crotch buckle are secured properly.

Chest clip is at child's armpit level.

Child's head is at least 1 in. (2.5 cm) below top of headrest.

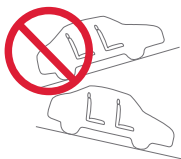
Shoulder straps are at or just below child's shoulders.



WARNING! Make sure that nothing interferes with the harness. Make sure harness straps are snug around the child and lay flat.

Serious injury or death could occur to a child that is not secured properly. If not secured properly, the child could be ejected in a sudden stop or crash, resulting in serious injury or death.

Adjusting Recline:



Make sure the vehicle is on a flat and **LEVEL** surface.

NEVER adjust the recline when vehicle is on an incline.

1 - The recline can be adjusted by pulling the recline adjustment lever (a) and pulling or pushing the base into the desired position (b). The base has 4 recline positions.

2 - Place the base on your vehicle seat and adjust the recline. Make sure the bubble level is entirely **UNDER** the lines for the correct recline.

For 0-3 months:

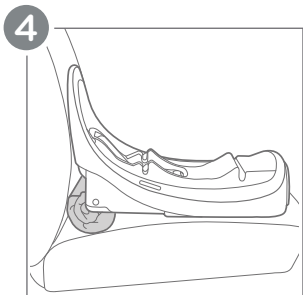
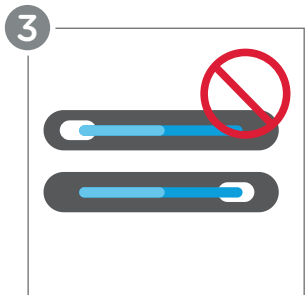
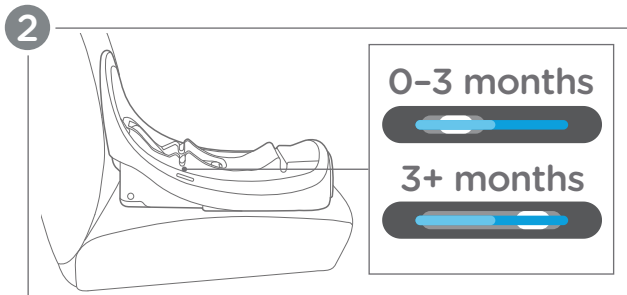
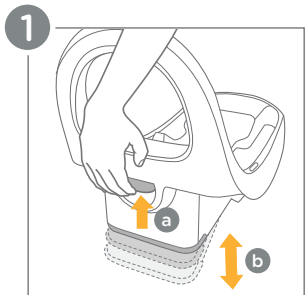
Make sure the bubble is entirely under the light blue line.

For 3+ months:

Make sure the bubble is entirely under any portion of the line.

3 - The bubble should not be outside the line for any recline position.

4 - If needed, a rolled-up towel may be placed under the base at the vehicle seat bight to adjust the bubble to the correct position.



Base Install LATCH:

INSTALL USING ONLY ONE METHOD.

NEVER install using BOTH vehicle belt and LATCH.

BEFORE INSTALLING refer to Adjusting Recline on pg. 40.

1 - Press the red LATCH release buttons to unhook the LATCH anchors from the storage positions on the base.

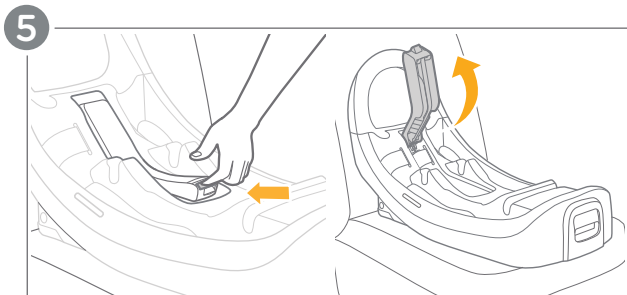
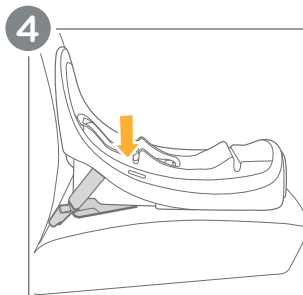
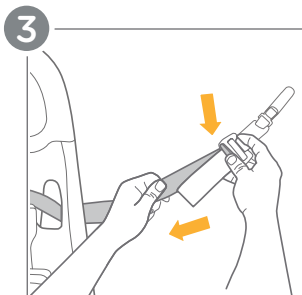
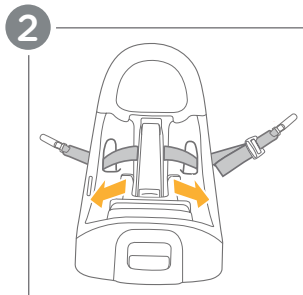
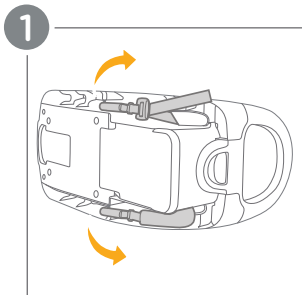
2 - Make sure the LATCH straps are threaded through the belt path, as shown.

3 - Press the gray button on the LATCH anchor and pull to extend the LATCH strap to the full length.

4 - Place the base on the vehicle seat and check the recline level. Adjust recline if needed.

5 - Lift up on the lock-off release lever and open the lock-off.

(Base Install LATCH continued on pg. 44)



Base Install LATCH: (cont.)

6 - Attach **BOTH** LATCH connectors to the correct lower anchor points in your vehicle.

7 - Press down firmly on the base while pulling on the free end of the LATCH strap to remove all the slack out of the LATCH strap.

IMPORTANT: **DO NOT** over tighten the LATCH strap or lock-off will not close.

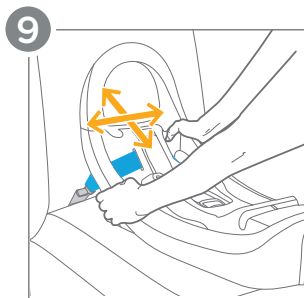
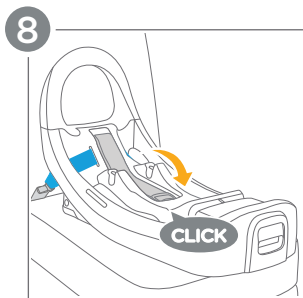
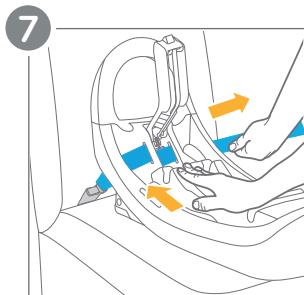
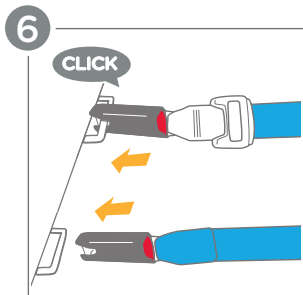
8 - Close the lock-off until you hear a **CLICK**. Keep your hands clear of the lock-off area while closing it.

9 - Grab both sides of the base at the belt path and push and pull in all directions. The base should **NOT MOVE** in any direction **MORE THAN 1 in. (2.5 cm)** at the belt path.

After installing the base continue on to Attaching Carrier to Base on pg. 56.

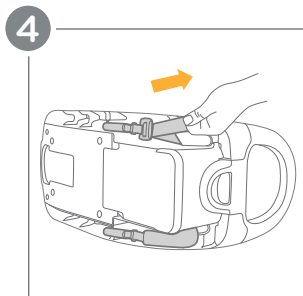
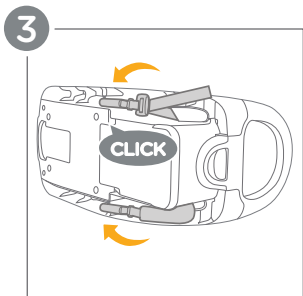
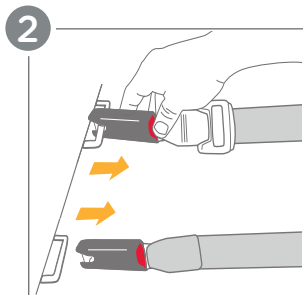
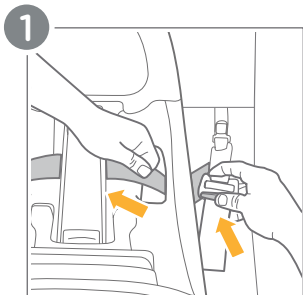
Check Install!

- Recline is adjusted to the correct level.
- LATCH connectors are properly attached.
- Base should be stable and **NOT MOVE** in any direction more than 1 in. (2.5 cm) at the belt path.



Removing and Storing LATCH:

- 1** - Press the gray button on the LATCH anchor and pull to extend the LATCH strap to the full length.
- 2** - Press the red LATCH release button to unhook the LATCH anchors and remove from the vehicle seat.
- 3** - Clip the LATCH anchors to the storage positions on the base.
- 4** - Pull the LATCH strap to tighten the LATCH anchors.



Base Install Lap/Shoulder Belt:

INSTALL USING ONLY ONE METHOD.

NEVER install using BOTH vehicle belt and LATCH.

Only install in a forward facing vehicle seat.

BEFORE INSTALLING refer to Adjusting Recline on pg. 40.

1 - Place the base on the vehicle seat. Lift up on the lock-off release lever and open the lock-off.

2 - Check the recline level.

3 - Thread the lap/shoulder belt through the belt path and buckle it.

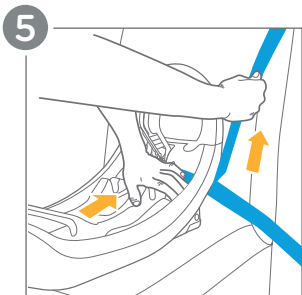
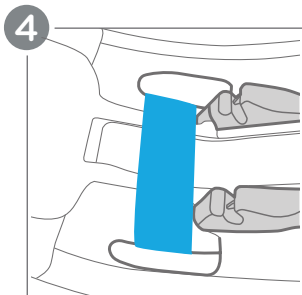
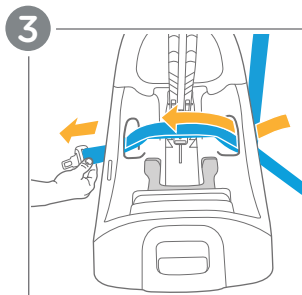
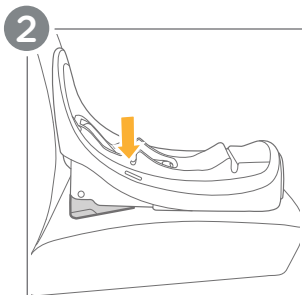
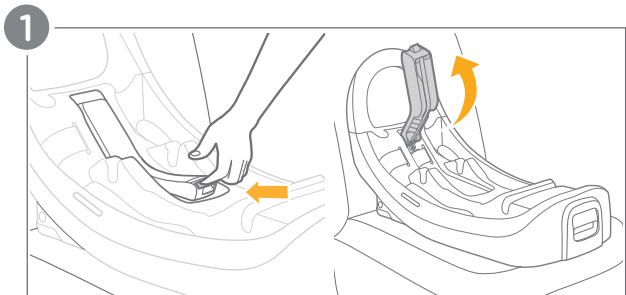
4 - Make sure vehicle belt is above the notches on the base.

IMPORTANT: Make sure the vehicle belt is not twisted and lies flat against the base.

5 - Press down firmly on the base while pulling on the vehicle shoulder belt to remove all the slack out of the vehicle lap belt.

IMPORTANT: DO NOT over tighten the vehicle belt or lock-off will not close.

(Base Install Lap/Shoulder Belt continued on pg. 50)



Base Install Lap/Shoulder Belt: (cont.)

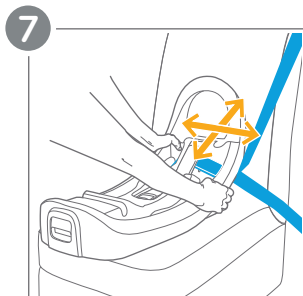
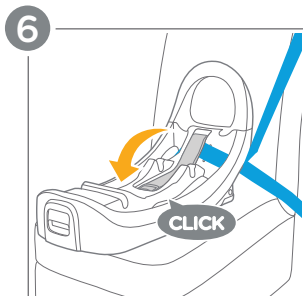
6 - Close the lock-off until you hear a **CLICK**. Keep your hands clear of the lock-off area while closing it.

7 - Grab both sides of the base at the belt path and push and pull in all directions. The base should **NOT MOVE** in any direction **MORE THAN 1 in. (2.5 cm)** at the belt path.

After installing the base continue on to Attaching Carrier to Base on pg. 56.

Check Install!

- Recline is adjusted to the correct level.
- Vehicle belt is buckled and is as tight as possible around the base. Vehicle belt is not loose or twisted.
- Base should be stable and **NOT MOVE** in any direction more than 1 in. (2.5 cm) at the belt path.



Base Install Lap Belt ONLY:

INSTALL USING ONLY ONE METHOD.

NEVER install using BOTH vehicle belt and LATCH.

Only install in a forward facing vehicle seat.

BEFORE INSTALLING refer to Adjusting Recline on pg. 40.

1 - Place the base on the vehicle seat. Lift up on the lock-off release lever and open the lock-off.

2 - Check the recline level.

3 - Thread the lap belt through the belt path and buckle it.

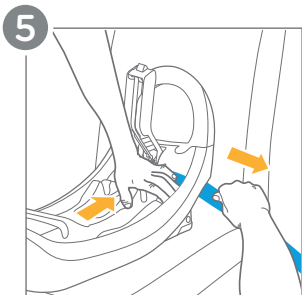
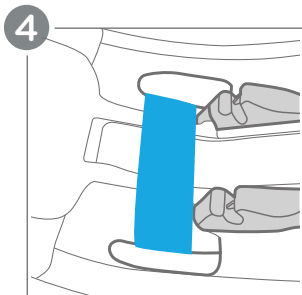
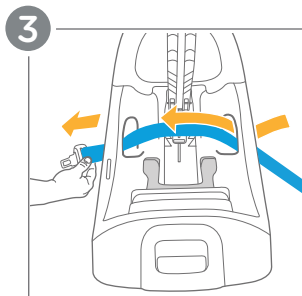
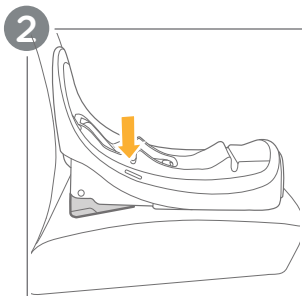
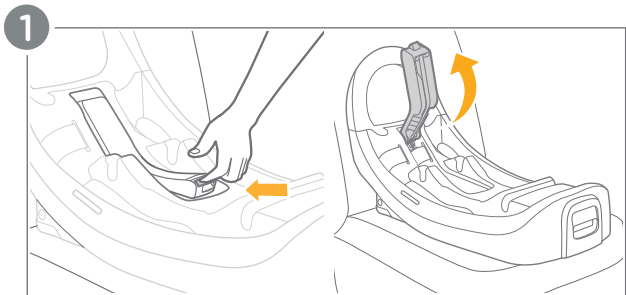
4 - Make sure vehicle belt is above the notches on the base.

IMPORTANT: Make sure the vehicle belt is not twisted and lies flat against the base.

5 - Press down firmly on the base while pulling on the vehicle lap belt on the opposite side of the buckle to remove all the slack.

IMPORTANT: **DO NOT** over tighten the vehicle belt or lock-off will not close.

(Base Install Lap Belt ONLY continued on pg. 54)



Base Install Lap Belt ONLY: (cont.)

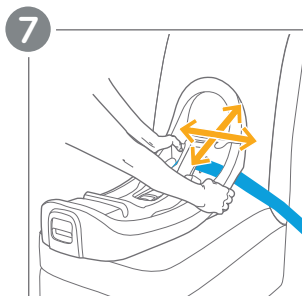
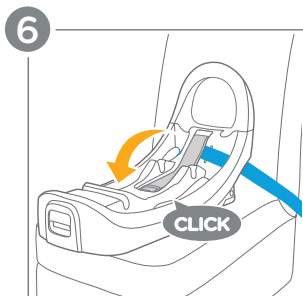
6 - Close the lock-off until you hear a **CLICK**. Keep your hands clear of the lock-off area while closing it.

7 - Grab both sides of the base at the belt path and push and pull in all directions. The base should **NOT MOVE** in any direction **MORE THAN 1 in. (2.5 cm)** at the belt path.

After installing the base continue on to Attaching Carrier to Base on pg. 56.

Check Install!

- Recline is adjusted to the correct level.
- Vehicle belt is buckled and is as tight as possible around the base. Vehicle belt is not loose or twisted.
- Base should be stable and **NOT MOVE** in any direction more than 1 in. (2.5 cm) at the belt path.

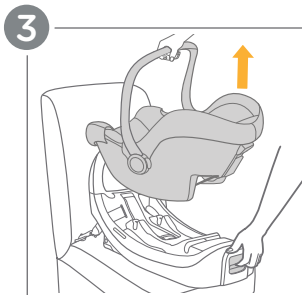
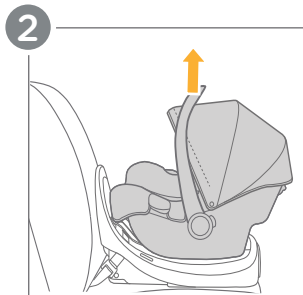
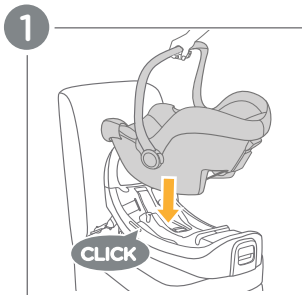


Attaching Carrier to Base:

- 1** - Place the child restraint onto the base. Push down on the front of the child restraint until you hear a **CLICK**.
- 2** - Check that the child restraint is secured by pulling up on the carry handle.

Removing Carrier from Base:

- 3** - Squeeze the carrier release button and pull the child restraint up by the carry handle



Carrier Install Lap/Shoulder Belt:

Only install in a forward-facing vehicle seat.

1 - Place the child restraint in the vehicle facing the back of the car. Make sure the **LEVEL LINE** on the restraint label is **LEVEL WITH THE GROUND**. A rolled-up towel or pool noodle may be used to adjust the recline.

Option 1 (suggested method)

2 - Thread your vehicle's lap belt under **BOTH** lap belt guides and buckle.

3 - Wrap the shoulder belt around the back of the child restraint and secure in the shoulder belt guide. Lock the lap/shoulder belt using your car's locking mechanism (check your vehicle owner's manual).

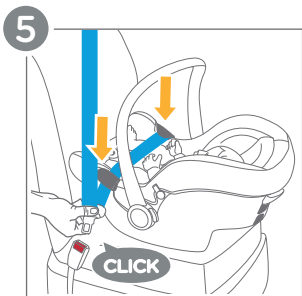
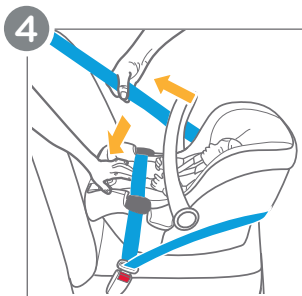
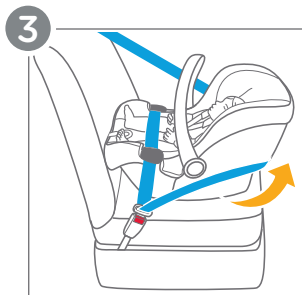
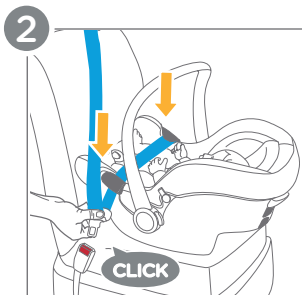
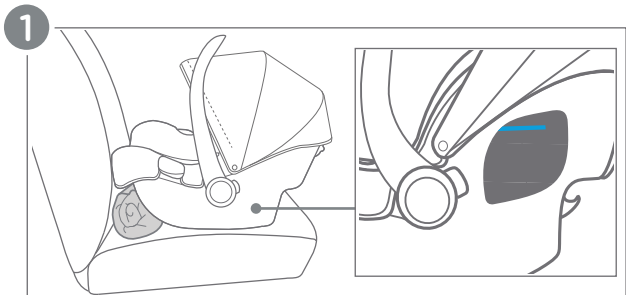
4 - Press firmly into the middle of the child restraint while pulling the vehicle's shoulder belt to tighten. Lock shoulder belt by pulling belt fully out, then letting it retract. If your vehicle seat belt doesn't lock, use a locking clip.

Option 2

5 - Thread your vehicle's lap belt under **BOTH** lap belt guides and buckle. Allow shoulder belt to lay against vehicle seat back as shown. Refer to step 4 to tighten.

Check Install!

- Level line must be level with ground.
- Vehicle belt is buckled and is as tight as possible around the child restraint. Vehicle belt is not loose or twisted.
- Child restraint should be stable and **NOT MOVE** in any direction more than 1 in. (2.5 cm) at belt path.



Carrier Install Lap Belt ONLY:

Only install in a forward-facing vehicle seat.

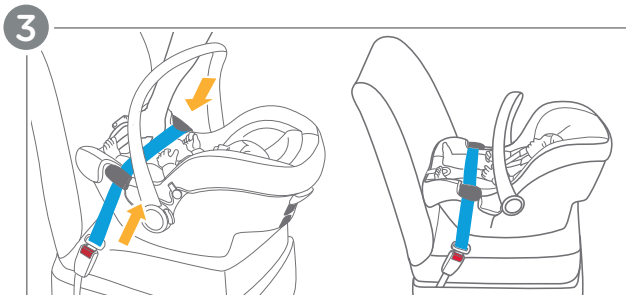
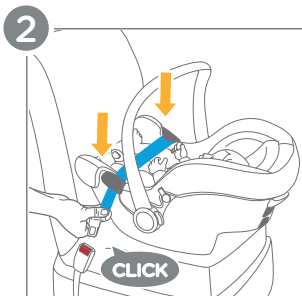
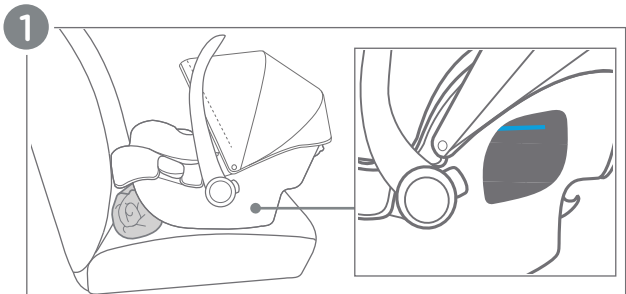
1 - Place the child restraint in the vehicle facing the back of the car. Make sure the **LEVEL LINE** on the restraint label is **LEVEL WITH THE GROUND**. A rolled-up towel or pool noodle may be used to adjust the recline.

2 - Thread your vehicle's lap belt under **BOTH** lap belt guides and buckle.

3 - Press down firmly into the middle of the child restraint while pulling on the vehicle's lap belt on the opposite side of the buckle to remove all the slack.

Check Install!

- Level line must be level with ground.
- Vehicle belt is buckled and is as tight as possible around the child restraint. Vehicle belt is not loose or twisted.
- Child restraint should be stable and **NOT MOVE** in any direction more than 1 in. (2.5 cm) at belt path.



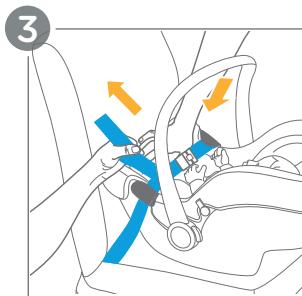
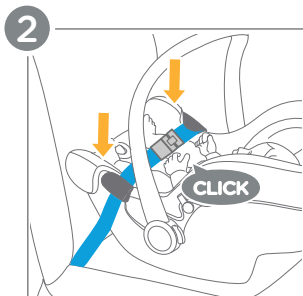
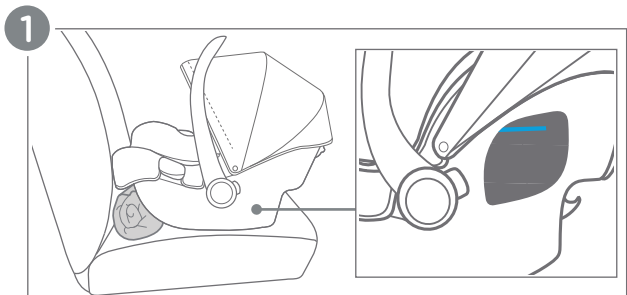
Install in an Aircraft:

This child restraint is certified for airplane use. Contact your airline about their policy before traveling.

1 - Place the child restraint in the seat facing the back of the aircraft. Make sure the **LEVEL LINE** on the restraint label is **LEVEL WITH THE FLOOR OF THE AIRCRAFT**. A rolled-up towel or pool noodle may be used to adjust the recline.

2 - Thread your aircraft lap belt under **BOTH** lap belt guides and buckle.

3 - Press firmly into the middle of the child restraint while pulling the aircraft lap belt to tighten.



Attaching Carrier to Stroller:

There are two different ways to attach your child restraint to your Joie stroller.

1 - Using Adapters: (included with most Joie strollers)

Refer to your stroller's instruction manual for specific instructions.

2 - Using Stroller Arm Bar: (included on some Joie strollers)

Refer to your stroller's instruction manual for specific instructions.

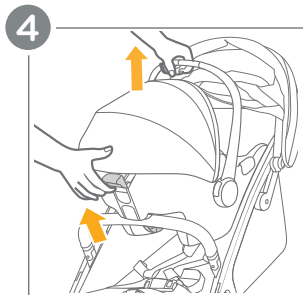
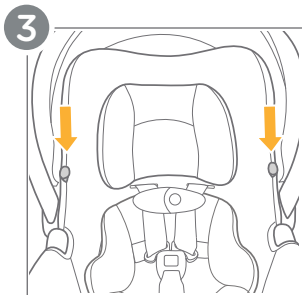
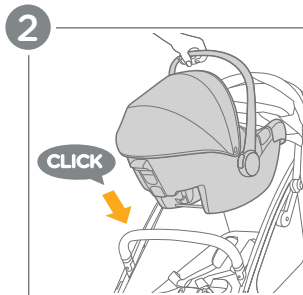
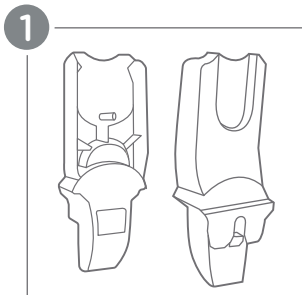
Removing Carrier from Stroller:

3 - Using Adapters:

Locate the stroller release buttons and press them on **BOTH** sides to release the child restraint. Lift the child restraint up using the carry handle to remove it.

4 - Using Stroller Arm Bar:

Locate the stroller release button and squeeze it while lifting the child restraint up using the carry handle to remove it.

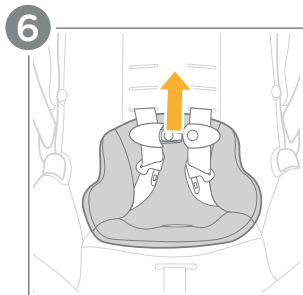
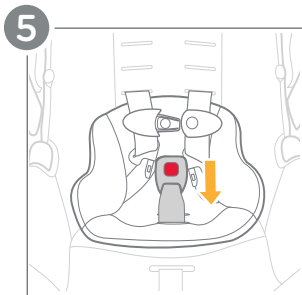
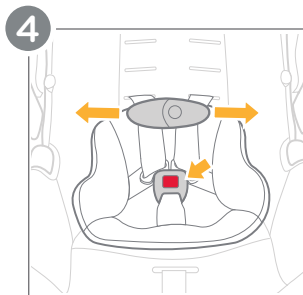
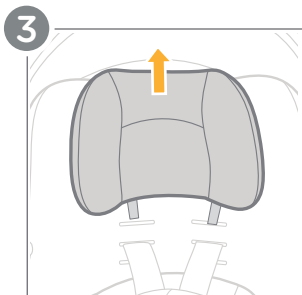
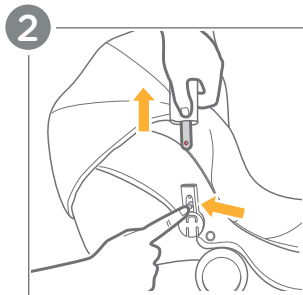
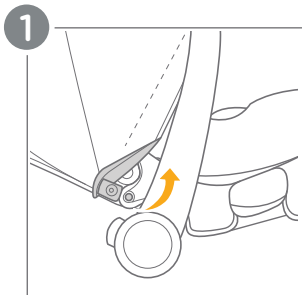


Removing Canopy & Softgoods:

WARNING! NEVER use the child restraint without the softgoods in place.

- 1** - Unfasten the snaps under the canopy fabric on the sides of the child restraint.
- 2** - Press the round plastic tab on the canopy support and pull it upwards to disconnect it from the hinge.
- 3** - Refer to Removing the Head Support on **pg. 26**.
- 4** - Unbuckle the crotch buckle and chest clip.
- 5** - Thread the crotch buckle through the slot of both the infant insert and seat pad.
- 6** - Remove the infant insert.

(Removing Canopy/Fabric continued on pg. 68)



Removing Canopy & Softgoods: (cont.)

7 - To disconnect the harness straps refer to Adjusting Harness Height on **pg. 30**.

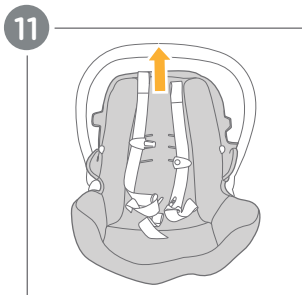
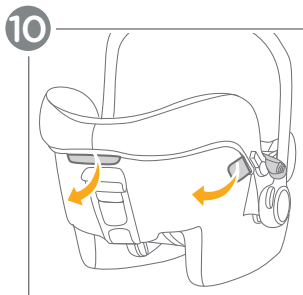
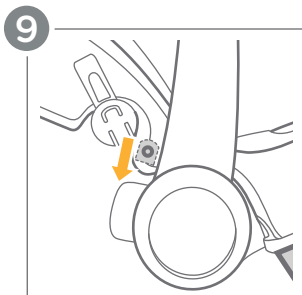
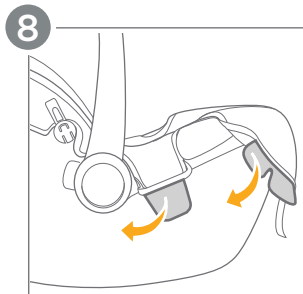
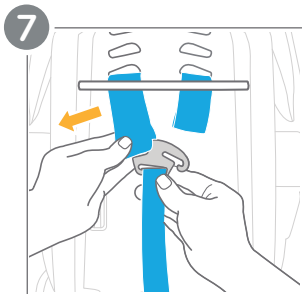
8 - Unhook two plastic tabs from **BOTH SIDES** of the child restraint shell.

9 - Next to the canopy hinge, pull down and unhook metal sliders from **BOTH SIDES**, located on underside of softgoods.

10 - Near the canopy hinge, unhook **BOTH** plastic tabs on either side. Unhook the plastic tab on the back of the child restraint shell.

11 - Carefully slide the lap belt guides through the opening in the fabric. Continue lifting the seat pad until it is completely removed.

To re-assemble, follow these steps in reverse order.



Care and Maintenance:

Washing:

Refer to the care label attached to the fabrics for washing and drying instructions. **DO NOT** attempt to remove the foam or tape under the seat pad.

Cleaning:

Use only mild detergent, water, and a soft cloth to clean the child restraint shell, base, handle, and harness straps. Spot clean harness only. Never immerse harness in water. Air dry after cleaning. **DO NOT** iron harness straps. **NEVER** use bleach or any other harsh chemicals anywhere on the child restraint.

Crotch Buckle Care:

Rinse the crotch buckle using warm water only. Do not use soaps, solvents, or lubricants. These can cause the buckle to malfunction. Air dry the buckle.

Storage:

When not in use for a long period, remove the child restraint from the vehicle. Store the child restraint in a cool, dry place that your child does not have access to.

Care and Maintenance:

Normal Wear and Tear:

It is normal for the fabric to fade from sunlight and show wear and tear over time, even when used normally.

Regular Checks:

Regularly check if everything functions properly. If any parts are torn, broken, or missing, stop using immediately and contact Joie Consumer Service for replacement parts.

Joie Baby USA Consumer Service Contact Info

Address: 70 Thousand Oaks Blvd, Morgantown, PA 19543

Email: info.us@joiebaby.com

Phone: 1-866-798-7866

Joie™

Effortlessly happy.

Helping parents be their best
with worry-free baby gear.

IM-001484B