

# Joie™

Instruction Manual

# saffron™ SI

4-in-1 car seat

Height: up to 60 in. (152 cm)

Weight: 4 to 120 lb. (1.8 to 54 kg)

---



installation  
videos



## IMPORTANT!

Read all instructions before assembling and using the car seat.  
Keep instructions for future use.

---

# Contents:

---

- 3 Important
  - Welcome to the Joie Family!
  - If You Need Help
  - Register Your Child Restraint
- 5 Child Requirements
- 6 Warnings
- 14 Best Practices
- 15 Vehicle Compatibility
- 16 Vehicle Belts
- 18 Choose Your Installation
- 20 Rear-Facing and Forward-Facing Requirements
- 22 Highback and Backless Booster Requirements
- 24 Parts List
- 26 Headrest Height Adjustment
- 30 Crotch Buckle Adjustment
- 34 Recline Adjustment
- 36 Routing LATCH Straps
- 40 Removing Infant Insert
- 42 Removing Side Impact Bolster
- 44 **RF - Install Using LATCH**
- 48 **RF - Install Lap/Shoulder Belt**
- 52 **RF - Install Lap Belt ONLY**
- 56 **RF - Securing Child in Seat**
- 62 **FF - Install Using LATCH and Tether**
- 68 **FF - Install Lap/Shoulder Belt and Tether**
- 72 **FF - Install Lap Belt ONLY and Tether**
- 76 **FF - Securing Child in Seat**
- 82 Removing LATCH and Tether
- 84 **Highback Booster - Install**
- 88 **Highback Booster - Securing Child in Seat**
- 90 **Backless Booster - Install/Use**
- 94 Reattaching Backless Booster
- 96 Removing Softgoods
- 102 Removing Cup Holders
- 104 Care and Maintenance

---

## Important:

---

### Welcome to the Joie Family!

Ensure your child's safety - **READ THIS MANUAL CAREFULLY!**

Although no child restraint can promise to protect in every situation, using it correctly reduces the chance of serious injury. Even if the child restraint seems easy, follow the step-by-step instructions in this book.

**Store this instruction manual in the compartment located on the back of the child restraint.**

### If You Need Help

If you have questions in the U.S.A. about parts, use, or maintaining your child restraint, contact our Consumer Service Department for assistance. To ensure a speedy response, please have your child restraint's model number and date of manufacture ready.

You can find the information on the manufacturer label on the child restraint.

### Joie Baby USA Consumer Service Contact Info

**Address:** 70 Thousand Oaks Blvd., Morgantown, PA 19543

**Email:** [info.us@joiebaby.com](mailto:info.us@joiebaby.com)

**Phone:** 1-866-798-7866

**(Important information continued on pg. 4)**

---

## Important:

---

### Register this Child Restraint

Child restraints could be recalled for safety reasons. You must register this restraint to be reached in a recall. Send your name, address, e-mail address if available, and the restraint's model number and manufacturing date to **70 Thousand Oaks Blvd., Morgantown, PA 19543**, call **1-866-798-7866**, or register online at:

<https://joiebaby.com/us/register-car-seat>

For recall information, call the U.S. Government's Vehicle Safety Hotline at **1-888-327-4236 (TTY: 1-800-424-9153)** or go to **www.NHTSA.gov**.

For future reference, record the following information about your child restraint in case you move, lose your registration card, or need to reference it for any reason. You can find this information on the registration card or on the manufacturer label located on the child restraint:

**Model Name:** \_\_\_\_\_

**Model Number:** \_\_\_\_\_

**Date of Manufacture:** \_\_\_\_\_

**Date of Purchase:** \_\_\_\_\_

---

## Child Requirements:

---

This child restraint is for a child that meets **BOTH** of the following requirements:

**Height:** up to 60 in. (152 cm)

**Weight:** 4 to 120 lb. (1.8 to 54 kg)

**STOP using this child restraint as soon as the child reaches the max. weight OR the max. height.**

According to accident statistics, children are safer when properly restrained in the rear seating positions than in the front seating positions. **Children should ride rear-facing as long as possible, until at least 2 years old.**

### Preterm or Low Birth Weight Infants

To ensure the safety of your preterm or low birth weight infant (born before 37 weeks or weighing less than 5 lb. (2.3 kg)), Joie recommends following the AAP's guidelines and consulting your doctor or hospital staff before the child's first car or airplane trip. A medical evaluation is crucial to check for breathing and heart rate concerns when traveling in a rear-facing child restraint.

For additional information or to have your child restraint inspected by a certified professional, you can visit the Safe Kids Worldwide website at [www.safekids.org](http://www.safekids.org).

---

# **WARNING!**

---

**DEATH OR SERIOUS INJURY** can occur if you fail to follow the warnings, instructions, and labels on the child restraint.

---

- Read **ALL INSTRUCTIONS** before use of the child restraint.
- Read the vehicle owner's manual for information on child restraint installation.
- **KEEP INSTRUCTIONS FOR FUTURE USE.**
- Failure to follow these instructions and the child restraint's labels can result in the child striking the vehicle's interior during a sudden stop or crash.
- **DO NOT** allow anyone who has not read the instruction manual to install or use this child restraint.
- **DO NOT** place rear-facing child restraint on front seat with air bag. **DEATH OR SERIOUS INJURY CAN OCCUR.** The back seat is the safest place for children 12 and under.



---

# WARNING!

---

**DEATH OR SERIOUS INJURY** can occur if you fail to follow the warnings, instructions, and labels on the child restraint.

---

- Your child's safety is your responsibility. **NEVER** leave your child unattended.
- If an air bag inflates, it can hit the child and the child restraint with great force and cause serious injury or death to your child. Review your vehicle owner's manual for more information about air bags and child restraint use.
- Use only with a child that weighs between 4 - 120 lb. (1.8 - 54 kg) and whose height is 60 in. (152 cm) or less.
- Stop using this child restraint as soon as the child reaches the max. weight OR the max. height.
- This child restraint is certified for use only in passenger vehicles. This child restraint is **NOT** certified for aircraft use, as aircraft belts will not accommodate proper installation of this child restraint.



---

 **WARNING!**

---

**DEATH OR SERIOUS INJURY** can occur if you fail to follow the warnings, instructions, and labels on the child restraint.

---

- **NEVER** secure this child restraint using an inflatable seat belt. Move to a vehicle seat that does not have an inflatable seat belt or install using LATCH.
- **NEVER** use lower anchors (LATCH) for children weighing more than 40 lb. (18 kg) for rear-facing or 45 lb. (20 kg) for forward-facing.
- Before each use, always check the child restraint to ensure that it is tightly secured to the vehicle seat.
- According to accident statistics, children are safer when properly restrained in the rear seating positions than in the front seating positions.
- If your vehicle does not have a back seat, review your vehicle owner's manual.



---

 **WARNING!**

---

**DEATH OR SERIOUS INJURY** can occur if you fail to follow the warnings, instructions, and labels on the child restraint.

---

- Vehicle seat belt system **MUST** hold the child restraint securely. Not all vehicle seat belts can be used with this child restraint.
- **NEVER** modify any part of the child restraint.
- Select a suitable location for the child restraint in your vehicle. Secure the child restraint with a vehicle seat belt or LATCH attachment that is properly routed as shown in this manual.
- **NEVER** attach two LATCH connectors to one vehicle lower anchor point unless specifically allowed by the vehicle manufacturer.
- Rear-facing child restraint must be properly leveled. An improperly reclined child restraint can result in breathing difficulties, injury, or ejection.

---

 **WARNING!**

---

**DEATH OR SERIOUS INJURY** can occur if you fail to follow the warnings, instructions, and labels on the child restraint.

---

- **DO NOT** remove the LATCH system from the child restraint. If using the vehicle seat belt to secure the child restraint, the LATCH connectors must be properly stored.
- **DO NOT** allow the child restraint to contact the vehicle interior (the side of the car door or the seat in the front).
- **DO NOT** use the child restraint if it has frayed or cut harness straps or is damaged in any way. To find out if damaged parts are replaceable, call 1-866-798-7866.
- **DO NOT** use the child restraint if it is damaged or broken or if parts are missing.
- **DO NOT** use this car seat for children that have implanted electronic medical devices. The magnetic locking mechanism on the chest clip can potentially disrupt the proper function of implanted electronic devices.

---

 **WARNING!**

---

**DEATH OR SERIOUS INJURY** can occur if you fail to follow the warnings, instructions, and labels on the child restraint.

---

- The side impact bolster **MUST** be used with children weighing under 40 lb. (18 kg).
- **DO NOT** use the tether when installing rear-facing.
- **DO NOT** use both the vehicle seat belt and the LATCH attachment at the same time.
- **DO NOT** attach additional padding, toys, or other devices unless made by Joie Baby and described in these instructions. Use only approved accessories. Unapproved items can injure your child and may void the warranty.
- **NEVER** leave the child restraint unsecured in your vehicle, even when it is unoccupied. In a crash, it could become a projectile and injure other vehicle occupants.

---

 **WARNING!**

---

**DEATH OR SERIOUS INJURY** can occur if you fail to follow the warnings, instructions, and labels on the child restraint.

---

- **NEVER** use clothing or blankets that interfere with providing a properly tightened harness. An unsecured or improperly harnessed child can come out of the restraint during a crash.
- Place blankets over the child **AFTER** the harness has been properly tightened.

This child restraint system conforms to all applicable Federal Motor Vehicle Safety Standards.

---

# **WARNING!**

---

**NEVER use a child restraint that has been involved in a MODERATE or SEVERE crash.**

Even if there is no visible damage, the child restraint's internal structure may be compromised and may not protect your child in a future crash.

**The child restraint is still usable after a minor incident in which all of the following apply:**

- 1) The vehicle was able to be driven away from the crash site.
- 2) The vehicle door nearest the child restraint was **NOT** damaged.
- 3) None of the passengers in the vehicle sustained any injuries in the crash.
- 4) If the vehicle has air bags, the air bags did not deploy during the crash; and
- 5) There is no visible damage to the child restraint.

**Contact Joie Consumer Service with any questions or concerns.**

---

## Best Practices:

---

### **Expiration:**

**DO NOT USE THIS CHILD RESTRAINT 10 YEARS AFTER ORIGINAL PURCHASE.**

Stop using it after that date and dispose of it. If the original purchase date is unknown, the manufacture date located on the child restraint should be used.

### **Hot Weather Warning:**

Child restraints can become extremely hot in the sun or warm weather. Always check the seat temperature before placing your child inside to avoid burns.

### **Clothing:**

For proper harness fit and child safety, avoid bulky clothing like heavy jackets or snowsuits when using the child restraint. Ensure the harness is snug but comfortable on your child.

---

## Vehicle Compatibility:

---

You **MUST** read and understand **ALL** child restraint-related instructions and warnings in your vehicle owner's manual to correctly and safely use this child restraint in your vehicle.



This child restraint can **ONLY** be installed on vehicle seats that face forward. **DO NOT** install on seats that face to the sides or rear of the vehicle.



**DO NOT** place the rear-facing child restraint on the front seat with air bag. **DEATH OR SERIOUS INJURY CAN OCCUR.** The back seat is the safest place for children 12 and under.

If your vehicle is equipped with front passenger side air bags, check your vehicle owner's manual for child restraint installation instructions.



**NEVER** attach two LATCH connectors to one vehicle lower anchor point unless specifically allowed by the vehicle manufacturer.

**DO NOT** use both the vehicle seat belt and lower anchor attachment at the same time.

---

## Vehicle Belts:

---

The following vehicle belts **CANNOT BE USED** with your child restraint. Install with the lower anchors instead.

### **1 - Motorized Belts (Automatic)**

These should not be used unless the shoulder belt can be removed, the lap belt is locked, and use is allowed by the vehicle manufacturer.

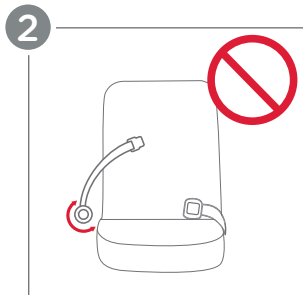
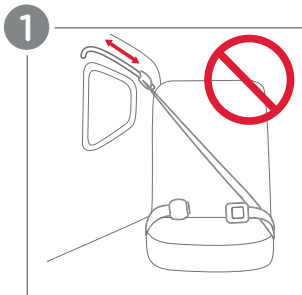
### **2 - Non-Locking (ELR) Lap Belts**

This belt only locks in a crash or sudden stop and should only be used with a belt-shortening clip.

### **3 - Airbag/Inflatable Belts**

### **4 - Door Mounted Belts**





---

## Choose Your Installation:

---

This child restraint can be installed in your vehicle using either the vehicle seat belt OR the lower anchor attachment (LATCH). Both are equally safe to use. **INSTALL USING ONLY ONE METHOD.**

---

## LATCH Overview:

---

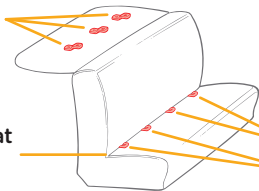
### LATCH (Lower Anchors and Tethers for Children):

The LATCH system, or lower anchor attachment and top tether, allow you to securely attach your child restraint in your car without using the vehicle seat belt. All 2003 and newer model year vehicles are required to have a LATCH system, although some manufacturers began including LATCH earlier. Some vehicle owner's manuals use the term ISOFIX to identify the LATCH system.

#### Vehicle's Tether Anchor



#### Vehicle Seat Bight



Typical seat in a passenger vehicle. Other vehicle types may have different LATCH locations.

#### LATCH Lower Anchors



Review your vehicle owner's manual for exact location and use.

---

# Vehicle Belt Overview:

---

## Vehicle Seat Belt:

Refer to your vehicle owner's manual to determine if the belts in your vehicle lock by switching the seat belt's retractor OR have a locking latch plate that locks the vehicle's seat belt.

## Vehicle Seat Belt Terms:

### Retractor

A device that winds up the unused vehicle seat belt. It is often hidden inside the panels on the walls of the vehicle or in the vehicle seatback.

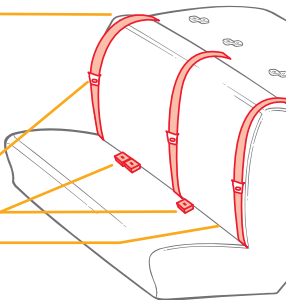
### Latch Plate

The male end of the seat belt with the metal tongue.

### Buckle

### Seat Bight

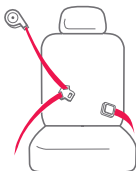
The crease where the vehicle seatback and seat bottom meet.



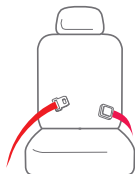
Review your vehicle owner's manual for exact location and use.

## Identify Your Seat Belt Type:

The vehicle seat belt types that can be used with this child restraint.

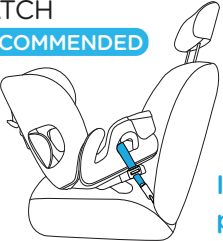
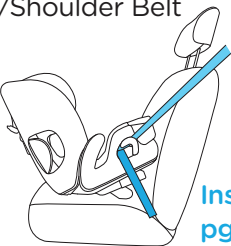
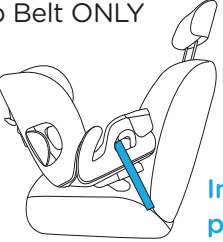


**Lap/Shoulder Belt**  
3 connection points.

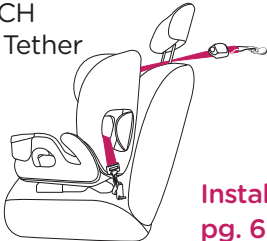
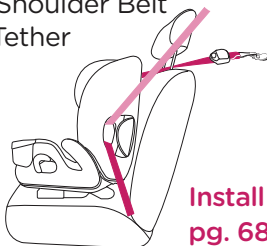
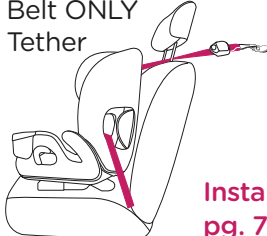


**Lap Belt Only**  
2 connection points.

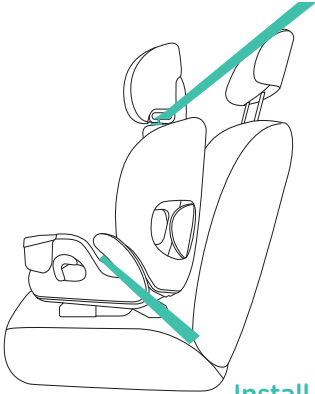
## Rear-Facing Requirements:

Installation Method	Suitable For
<p>LATCH <b>RECOMMENDED</b></p>  <p>Install pg. 44</p>	<p>Height: less than <b>43 in. (110 cm)</b></p> <p>Weight: <b>4 - 40 lb.</b> <b>(1.8 - 18 kg)</b></p>
<p>Lap/Shoulder Belt</p>  <p>Install pg. 48</p>	<p>Children should ride rear-facing as long as possible, until at least <b>2 years old.</b></p> <p><b>WARNING! DO NOT</b> use tether when installing rear-facing.</p>
<p>Lap Belt ONLY</p>  <p>Install pg. 52</p>	<p><b>WARNING! NEVER</b> use lower anchors (LATCH) for children weighing more than <b>40 lb. (18 kg).</b></p>


## Forward-Facing Requirements:

Installation Method	Suitable For
<p>LATCH and Tether</p>  <p>Install pg. 62</p>	<p>Height: less than <b>49 in. (125 cm)</b></p>
<p>Lap/Shoulder Belt and Tether</p>  <p>Install pg. 68</p>	<p>Weight: <b>30 - 65 lb.</b> <b>(14 - 30 kg)</b></p> <p><b>Child must be able to sit upright unassisted and must be at least 1 year old.</b></p> <p><b>WARNING! NEVER</b> use lower anchors (LATCH) for children weighing more than 45 lb. (20 kg).</p>
<p>Lap Belt ONLY and Tether</p>  <p>Install pg. 72</p>	

## Highback Booster Requirements:

Installation Method	Suitable For
<p data-bbox="83 238 393 273">Lap/Shoulder Belt</p>  <p data-bbox="404 769 512 855"><b>Install</b> <b>pg. 84</b></p>	<p data-bbox="549 427 854 506">Height: <b>less than 57 in. (145 cm)</b></p> <p data-bbox="549 546 906 625">Weight: <b>40 - 100 lb. (18 - 45 kg)</b></p> <p data-bbox="549 658 958 763">Children over 65 lb. (30 kg) who are at least 4 years old <b>MUST</b> be in booster mode.</p> <p data-bbox="549 796 906 901">Check your local and state laws and the AAP/NHTSA recommendations.</p>

## Backless Booster Requirements:

Installation Method	Suitable For
<p data-bbox="66 238 370 271">Lap/Shoulder Belt</p>  <p data-bbox="385 663 497 742">Install pg. 90</p>	<p data-bbox="528 438 859 518">Height: <b>43 - 60 in.</b> (110 - 152 cm)</p> <p data-bbox="528 556 878 636">Weight: <b>50 - 120 lb.</b> (23 - 54 kg)</p> <p data-bbox="528 668 938 775">Children over 65 lb. (30 kg) who are at least 4 years old <b>MUST</b> be in booster mode.</p> <p data-bbox="528 804 884 909">Check your local and state laws and the AAP/NHTSA recommendations.</p>

---

## Parts List:

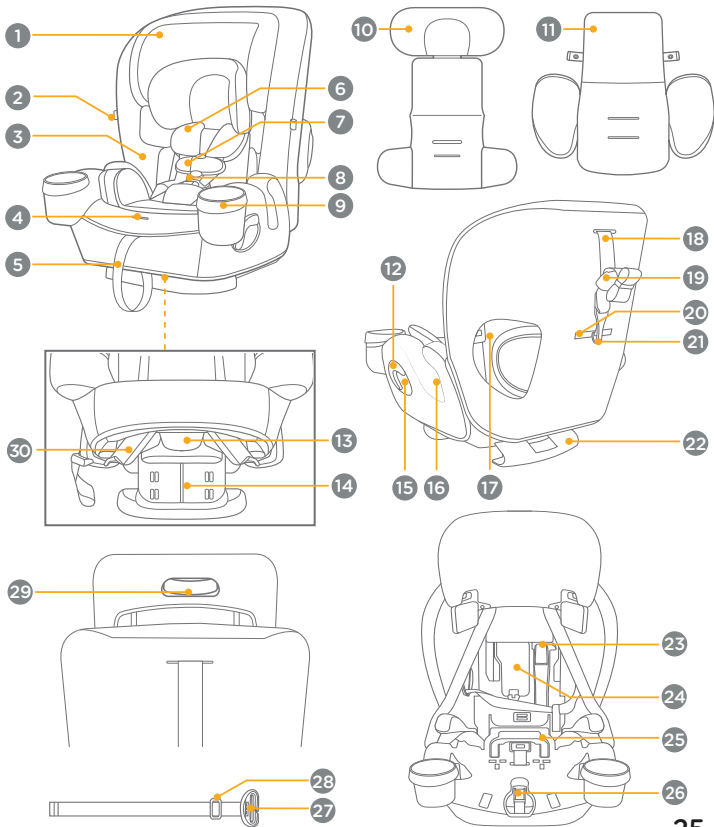
---

Please make sure there are no missing parts. Please contact Joie Consumer Service if anything is missing.

- 1 Headrest
- 2 Harness Buckle Holder (x2)
- 3 Seat Pad
- 4 Harness Adjustment Button
- 5 Harness Adjustment Strap
- 6 Harness Cover (x2)
- 7 Magnetic Chest Clip
- 8 Buckle
- 9 Cup Holder
- 10 Infant Insert
- 11 Side Impact Bolster
- 12 Rear-Facing Lock-Off
- 13 Recline Adjustment Lever
- 14 Recline Base
- 15 Rear-Facing Belt Path
- 16 Booster Belt Path
- 17 Forward-Facing Belt Path
- 18 Tether Strap
- 19 Tether Strap Adjuster
- 20 Instruction Manual Storage
- 21 Tether Storage
- 22 Recline Foot
- 23 Lock-Off Release Lever
- 24 Harness Storage Compartment
- 25 Backless Booster Release Handle
- 26 Harness Adjustment Button
- 27 Shoulder Harness Adjuster
- 28 Shoulder Belt Positioning Clip
- 29 Headrest Adjustment Lever
- 30 LATCH Connectors



# Parts List:



---

## Headrest Height Adjustment:

---

For safety and comfort, ensure the harness straps fit snugly on your child's shoulders and are adjusted to the proper height stated below.

**1** - Loosen the harness straps by pressing the harness adjustment button (a) and pulling on the straps (b).

**2** - Locate the headrest adjustment lever and squeeze it while moving the headrest up or down until it locks into one of the 10 available positions.

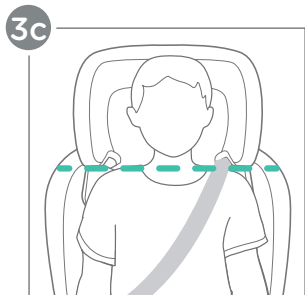
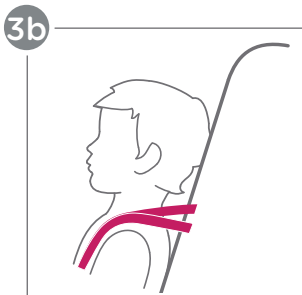
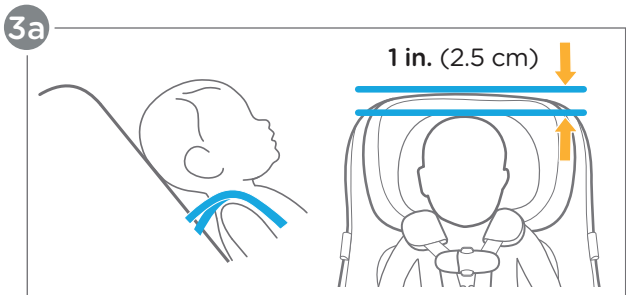
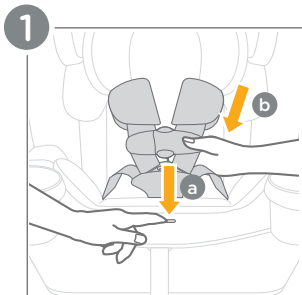
**3** - Place your child in the child restraint and adjust the headrest for the correct adjustment for your installation:

**a. Rear-Facing:** The harness straps should be at or just **BELOW** the child's shoulders, and the top of child's head **MUST** be at least 1 in. (2.5 cm) below the top of the child restraint.

**b. Forward-Facing:** The harness straps should be at or just **ABOVE** the child's shoulders.

**c. Highback Booster:** The belt guides should be at or just above the child's shoulders.

(Headrest Height Adjustment continued on pg. 28)



---

## Headrest Height Adjustment: (cont.)

---

**4** - Insert the buckle tongues into the crotch buckle. Listen for a **CLICK**. Pull on the crotch buckle to ensure that it is properly latched.

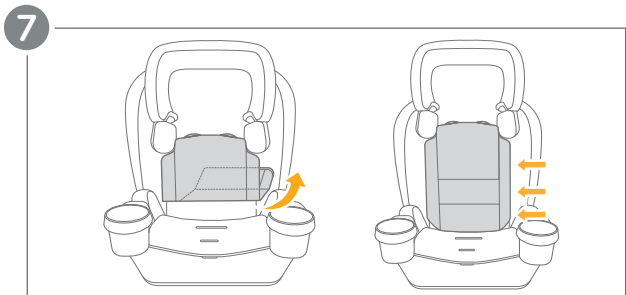
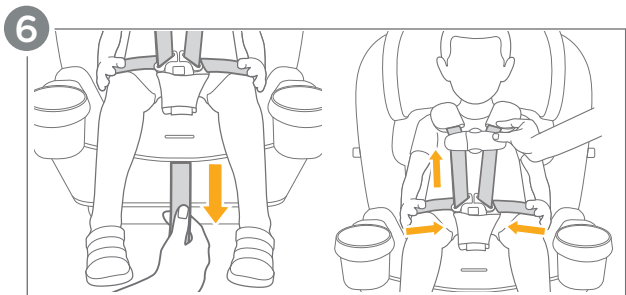
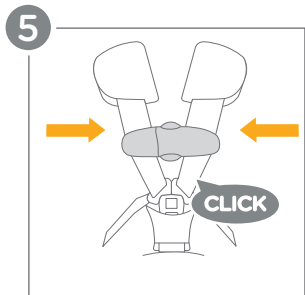
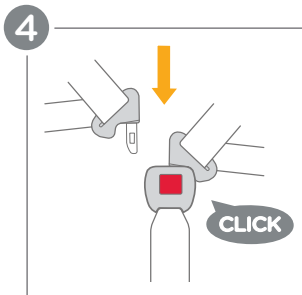
**5** - Snap the chest clip together and temporarily slide it down towards the buckle for tightening of the harness straps.

**6** - Pull on the adjustment strap to tighten the harness. Slide any excess strap length from the child's waist up through the buckle towards the shoulders, and repeat this step until the harness is secure. You should **NOT** be able to vertically pinch the harness straps at the collarbone area.

### Check the Final Fit:

Ensure the harness is snug and the headrest is positioned correctly. If not repeat **Step 1 - Headrest Height Adjustment**.

**7** - The headrest back fabric has 3 folding positions. After adjusting the headrest, fold or unfold the back fabric to provide proper support.



---

## Crotch Buckle Adjustment:

---

**The harness buckle has two positions. Use the position that is closest to (but not under) your child.**

**1** - Unbuckle the harness by pressing the release buttons on the chest clip.

**2** - Press the release buttons on the crotch buckle and remove both buckle tongues.

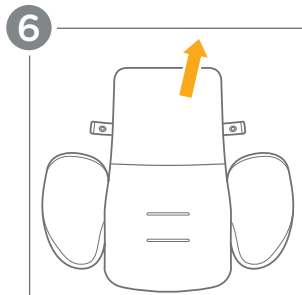
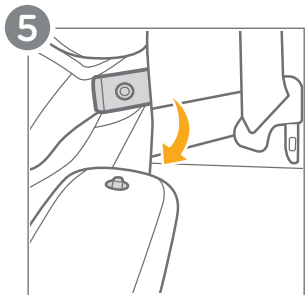
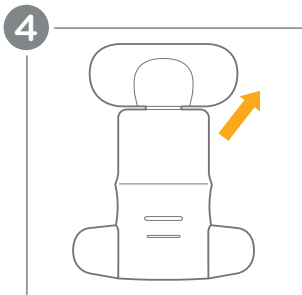
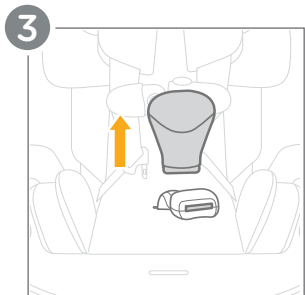
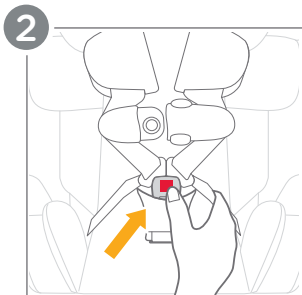
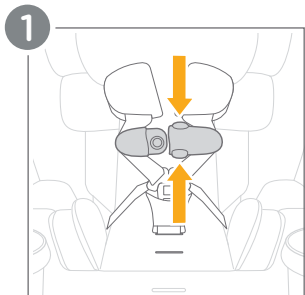
**3** - Remove the crotch pad.

**4** - Remove the infant insert by threading the crotch buckle through the pad.

**5** - Undo the snaps on either side of the side impact bolster.

**6** - Remove the side impact bolster by threading the crotch buckle through the pad.

**(Crotch Buckle Adjustment continued on pg. 32)**



---

## Crotch Buckle Adjustment: (cont.)

---

**7** - Undo the snaps on the back of the seat pad and pull forward.

**8** - Locate the crotch buckle adjustment slots in the seat shell and squeeze/pinch the sides of the strap together. Twist and slide the crotch buckle strap forward or backwards into the desired slot to best fit your child.

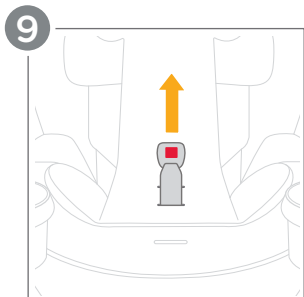
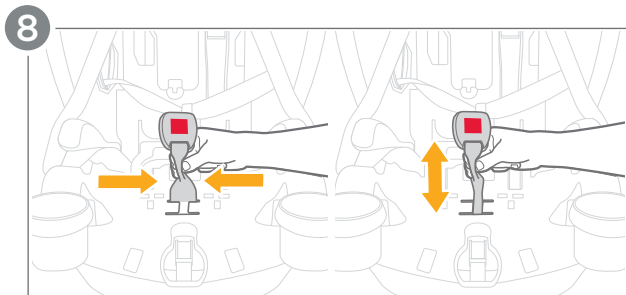
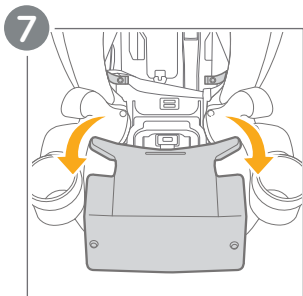
**9** - Thread the crotch buckle back up through the seat fabric in the correct slot and reattach the seat fabric button snaps.

**Reassemble the crotch pad, side impact bolster, and infant insert (if being used).**

**WARNING! ALWAYS** ensure that the crotch buckle strap is **NOT** twisted and the buckle button is facing outward.

**IMPORTANT:** Check to ensure that the crotch buckle strap is properly secured by pulling up on the buckle.

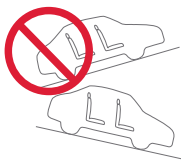




---

## Recline Adjustment:

---



Ensure that the vehicle is on a flat and **LEVEL** surface.

**NEVER** adjust the recline when the vehicle is on an incline.

**1** - The recline foot must be adjusted to either position (a) or position (b) based on your installation.

**a. Rear-Facing**

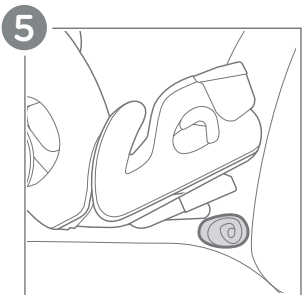
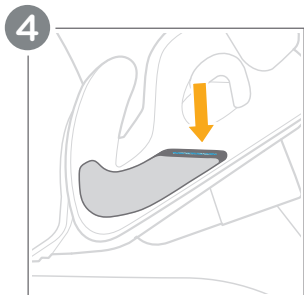
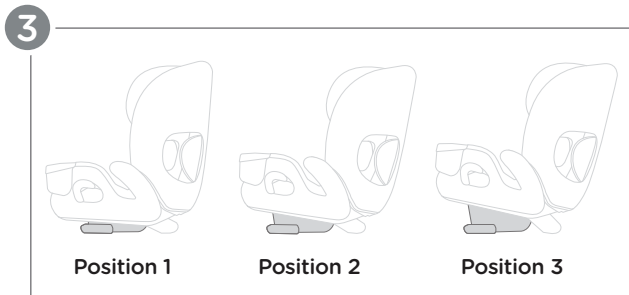
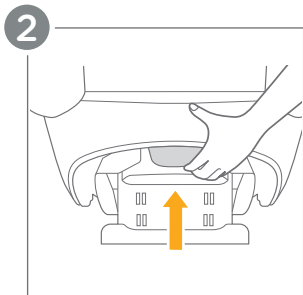
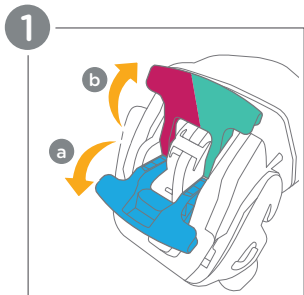
**b. Forward-Facing and Booster**

**2** - Place the child restraint on your vehicle seat and adjust the recline by squeezing the recline adjustment lever and locking the recline base into the desired position.

**3** - This child restraint has 3 recline positions.

**4** - For **Rear-Facing**, the **LEVEL LINE** on the restraint label must be **LEVEL WITH THE GROUND**.

**5** - If needed for **Rear-Facing**, a rolled-up towel may be placed under the child restraint at the vehicle seat bight to adjust the recline.



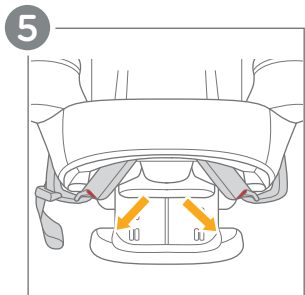
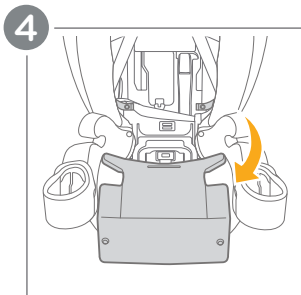
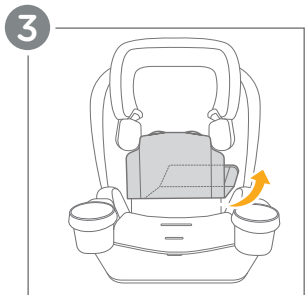
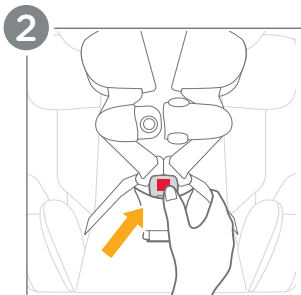
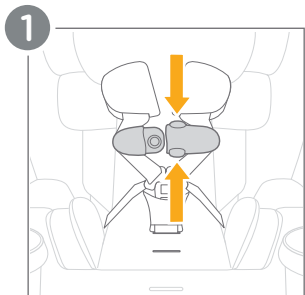
---

## Routing LATCH Straps:

---

- 1** - Unbuckle the harness by pressing the release buttons on the chest clip.
- 2** - Press the release buttons on the crotch buckle and remove both buckle tongues.
- 3** - Lift the back headrest fabric up and out of the way.
- 4** - Undo the snaps on the back of the seat pad and pull forward.
- 5** - Push in on the red buttons on the LATCH connectors and remove them from the storage position.

**(Routing LATCH Straps continued on pg. 38)**



---

## Routing LATCH Straps: (cont.)

---

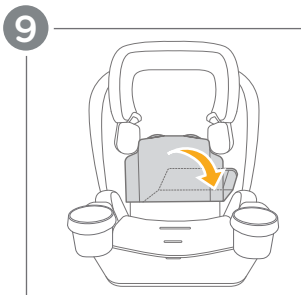
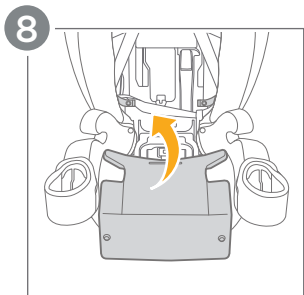
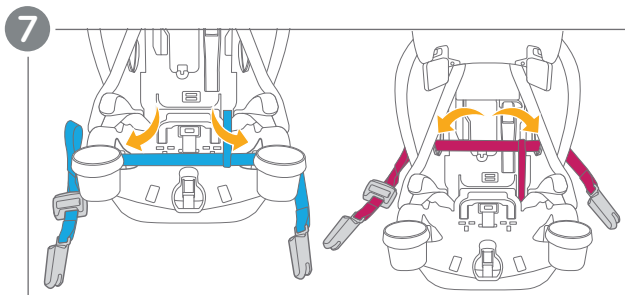
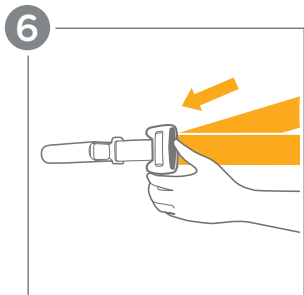
**6** - Press the gray button on the LATCH strap adjuster and pull to extend the LATCH strap completely.

**7** - Route the LATCH straps through the correct openings on the child restraint for either **Rear-Facing** or **Forward-Facing mode**, as shown.

**IMPORTANT:** Ensure that the harness straps are out of the way and are **NOT** tangled with the LATCH straps.

**8** - Fold the seat pad back into place and redo the snaps on the back of the seat pad.

**9** - Pull the back headrest fabric back down into place.



---

## Removing Infant Insert:

---

The infant insert can be used, as needed, to provide a snug fit for small babies.

**1** - Unbuckle the harness by pressing the release buttons on the chest clip.

**2** - Press the release buttons on the crotch buckle and remove both buckle tongues.

**3** - Remove the crotch pad.

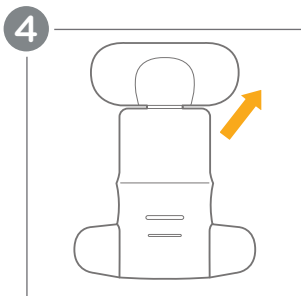
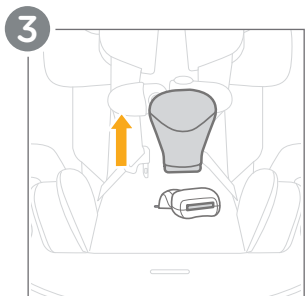
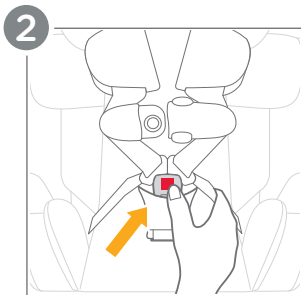
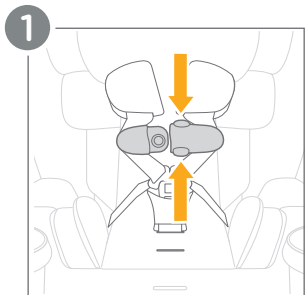
**4** - Remove the infant insert by threading the crotch buckle through the pad.

**Reassemble the crotch pad (if being used).**

**IMPORTANT:** The infant insert can be used for smaller babies but **MUST** be removed once the child reaches 11 lb. (5 kg).

**IMPORTANT:** **NEVER** use the infant insert when forward-facing.





---

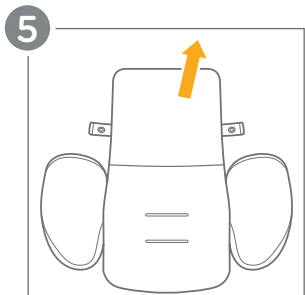
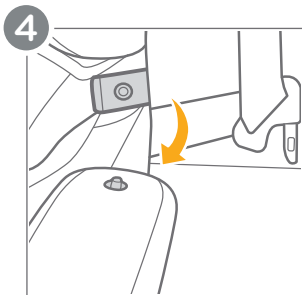
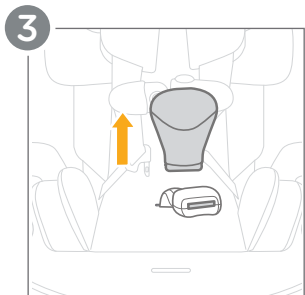
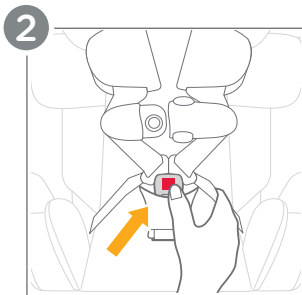
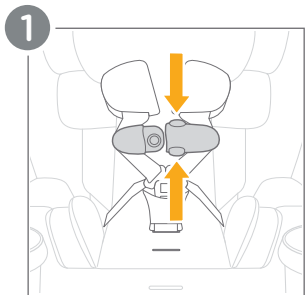
## Removing Side Impact Bolster:

---

**IMPORTANT:** The side impact bolster **MUST** be used with children weighing under 40 lb. (18 kg).

- 1** - Unbuckle the harness by pressing the release buttons on the chest clip.
- 2** - Press the release buttons on the crotch buckle and remove both buckle tongues.
- 3** - Remove the crotch pad.
- 4** - Undo the snaps on either side of the side impact bolster.
- 5** - Remove the side impact bolster by threading the crotch buckle through the pad.

**Reassemble the crotch pad (if being used).**



---

## RF - Install Using LATCH:

---

For easier installation, Joie recommends using LATCH when rear-facing. However, either LATCH or the seat belt are safe installation methods when used correctly. Please refer to your vehicle owner's manual to confirm LATCH seating positions.

**WARNING!** DO NOT use the tether when installing rear-facing. DO NOT install by this method for a child weighing more than 40 lb. (18 kg).

### **INSTALL USING ONLY ONE METHOD.**

**NEVER** install using BOTH vehicle belt and LATCH.

**ONLY** install in a forward-facing vehicle seat.

### **Before installing:**

Adjust the recline base and foot **(see pg. 34)**.

Properly route the LATCH straps **(see pg. 36)**.

Properly store the tether **(see pg. 82)**.

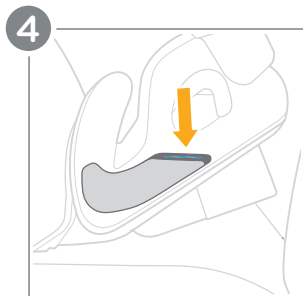
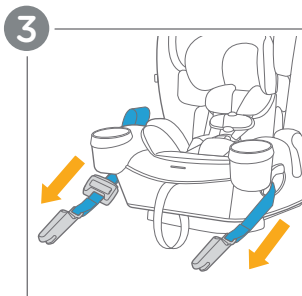
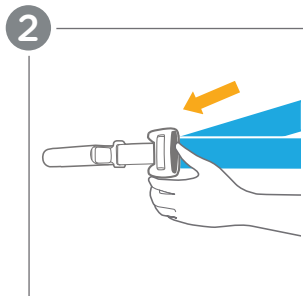
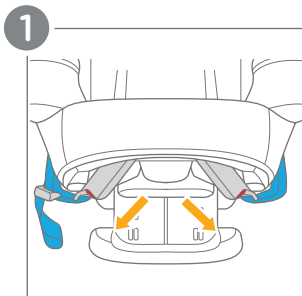
**1** - Push in on the red buttons on the LATCH connectors and remove them from the storage position.

**2** - Press the gray button on the LATCH strap adjuster and pull to extend the LATCH strap completely.

**3** - Ensure that the LATCH straps are through the rear-facing belt path.

**4** - Place the child restraint on the vehicle seat rear-facing. Ensure that the **LEVEL LINE** on the restraint label is **LEVEL WITH THE GROUND**. A rolled-up towel or pool noodle may be used to further adjust the recline if needed.

**(RF - Install Using LATCH continued on pg. 46)**



---

## RF - Install Using LATCH: (cont.)

---

**5** - Attach **BOTH** LATCH connectors to the correct lower anchor points in your vehicle.

**6** - Press down firmly on the child restraint while pulling on the free end of the LATCH strap to remove all the slack out of the LATCH strap.

**7** - Grab both sides of the child restraint **at the belt path** and push and pull in all directions. The child restraint should be snug and should **NOT MOVE** in any direction **MORE THAN 1 in. (2.5 cm) at the belt path.**

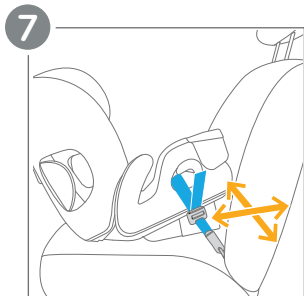
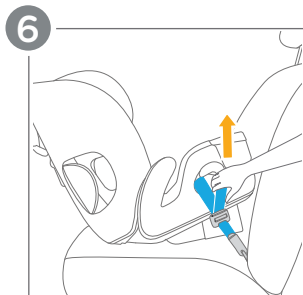
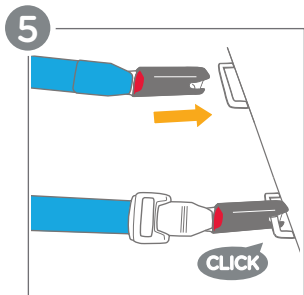
After installing, continue on to [RF - Securing Child in Seat](#) on pg. 56.

---

## Check Install!

---

- The recline base is adjusted to the correct position.
- The level line is level with the ground.
- The LATCH connectors are properly attached.
- The child restraint should be snug and **NOT MOVE** in any direction more than 1 in. (2.5 cm) at the belt path.



---

## RF - Install Lap/Shoulder Belt:

---

**WARNING!** DO NOT use the tether when installing rear-facing.

### **INSTALL USING ONLY ONE METHOD.**

**NEVER** install using **BOTH** vehicle belt and LATCH.

**ONLY** install in a forward-facing vehicle seat.

### **Before installing:**

Adjust the recline base and foot (see pg. 34).

Properly store the LATCH and tether (see pg. 82).

**1** - Place the child restraint on the vehicle seat rear-facing. Ensure that the **LEVEL LINE** on the restraint label is **LEVEL WITH THE GROUND**. A rolled-up towel or pool noodle may be used to further adjust the recline if needed.

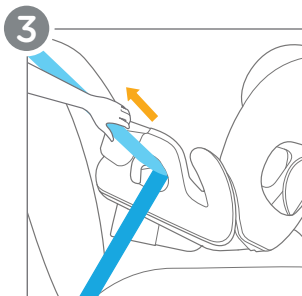
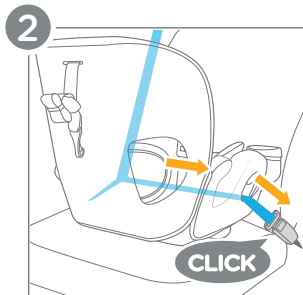
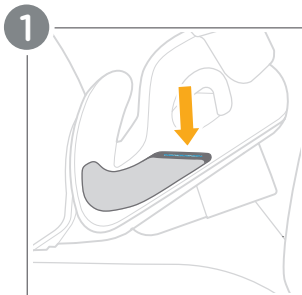
**2** - Thread the lap/shoulder belt through the rear-facing belt path and buckle the lap/shoulder belt.

**IMPORTANT:** Ensure that the vehicle belt is not twisted and lies flat against the child restraint.

**3** - Press down firmly on the child restraint while pulling on the vehicle shoulder belt to remove all the slack out of the vehicle lap belt.

**(RF - Install Lap/Shoulder Belt continued on pg. 50)**





---

## RF - Install Lap/Shoulder Belt: (cont.)

---

**4** - Slide the shoulder belt between the lock-off and seat.

**5** - Grab both sides of the child restraint **at the belt path** and push and pull in all directions. The child restraint should be snug and should **NOT MOVE** in any direction **MORE THAN 1 in. (2.5 cm) at the belt path.**

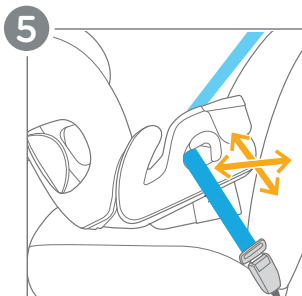
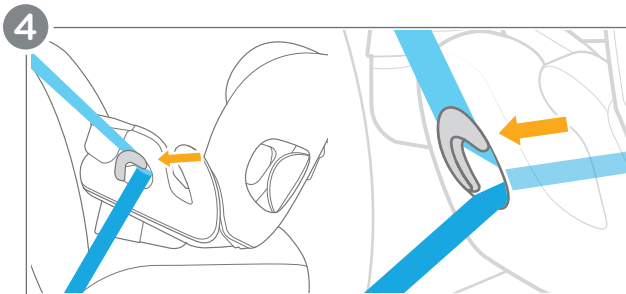
After installing, continue on to [RF - Securing Child in Seat](#) on pg. 56.

---

## Check Install!

---

- The recline base is adjusted to the correct position.
- The level line is level with the ground.
- The vehicle belt is buckled and is as snug as possible around the child restraint. The vehicle belt is not loose or twisted.
- The child restraint should be snug and **NOT MOVE** in any direction more than 1 in. (2.5 cm) at the belt path.



---

## RF - Install Lap Belt ONLY:

---

**WARNING!** DO NOT use the tether when installing rear-facing.

### **INSTALL USING ONLY ONE METHOD.**

**NEVER** install using **BOTH** vehicle belt and LATCH.

**ONLY** install in a forward-facing vehicle seat.

### **Before installing:**

Adjust the recline base and foot (see pg. 34).

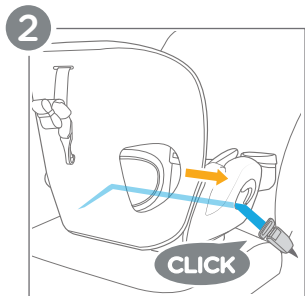
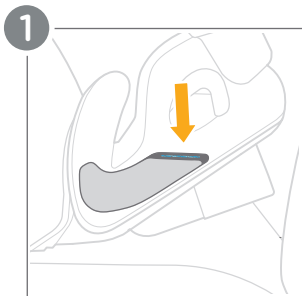
Properly store the LATCH and tether (see pg. 82).

**1** - Place the child restraint on the vehicle seat rear-facing. Ensure that the **LEVEL LINE** on the restraint label is **LEVEL WITH THE GROUND**. A rolled-up towel or pool noodle may be used to further adjust the recline if needed.

**2** - Thread the lap belt through the rear-facing belt path and buckle the lap belt.

**IMPORTANT:** Ensure that the vehicle belt is not twisted and lies flat against the child restraint.

**(RF - Install Lap Belt ONLY continued on pg. 54)**



---

## RF - Install Lap Belt ONLY: (cont.)

---

**3** - Press down firmly on the child restraint while pulling on the vehicle lap belt to remove all the slack.

**4** - Grab both sides of the child restraint **at the belt path** and push and pull in all directions. The child restraint should be snug and should **NOT MOVE** in any direction **MORE THAN 1 in. (2.5 cm)** at the belt path.

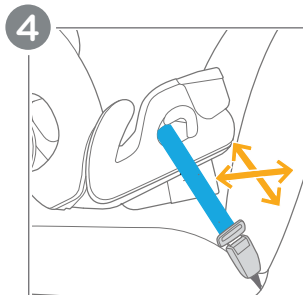
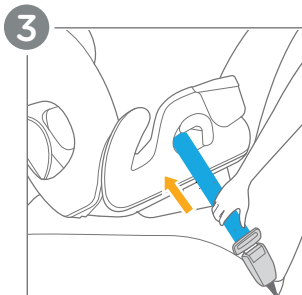
After installing, continue on to [RF - Securing Child in Seat](#) on pg. 56.

---

## Check Install!

---

- The recline base is adjusted to the correct position.
- The level line is level with the ground.
- The vehicle belt is buckled and is as snug as possible around the child restraint. The vehicle belt is not loose or twisted.
- The child restraint should be snug and **NOT MOVE** in any direction more than 1 in. (2.5 cm) at the belt path.



---

## RF - Securing Child in Seat:

---

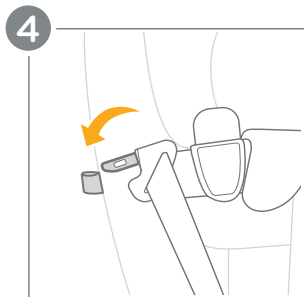
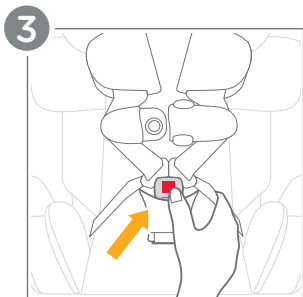
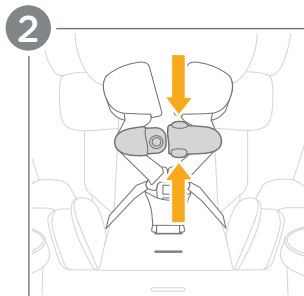
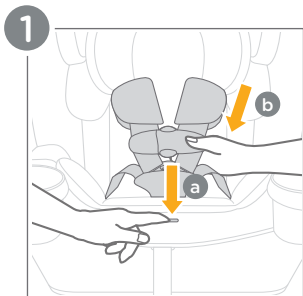
- 1** - Loosen the harness straps by pressing the harness adjustment button (a) and pulling on the straps (b).
- 2** - Press the release buttons on the chest clip to separate.
- 3** - Press the release button to remove the buckle tongues from the crotch buckle.
- 4** - Spread the harness straps apart and insert the buckle tongues into the harness buckle holders on either side of the child restraint. Place your child in the child restraint and gently guide the child's arms through the harness straps.

**WARNING:** The child must be in a seated position against both the back and bottom of the seat with no gap behind the child. **DO NOT** allow the child to slouch.

For rear-facing use, the harness straps must be at or just below the child's shoulders to avoid injury.

**(RF - Securing Child in Seat continued on pg. 58)**





---

## RF - Securing Child in Seat: (cont.)

---

**5** - The top of child's head **MUST** be at least **1 in. (2.5 cm)** below the top of the child restraint and the harness straps should be at or just **BELOW** the child's shoulders. If **NOT**, please refer to Headrest Height Adjustment on pg. 26.

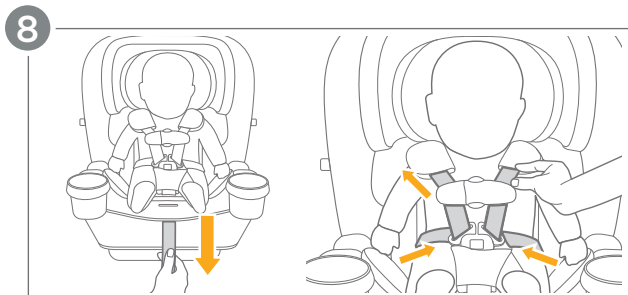
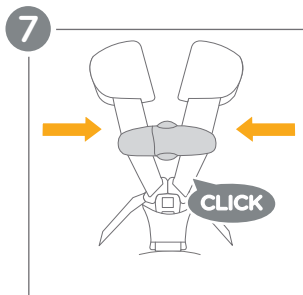
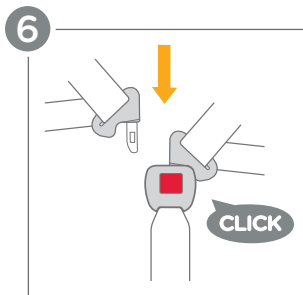
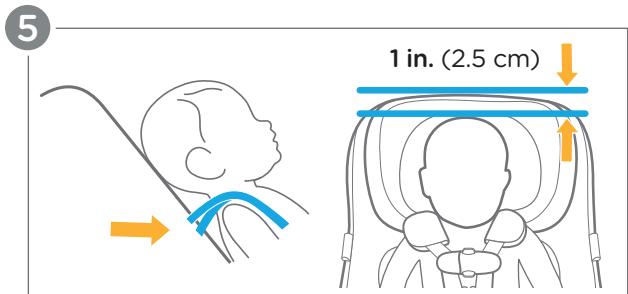
**6** - Insert the buckle tongues into the crotch buckle. Listen for a **CLICK**. Pull on the crotch buckle to ensure that it is properly latched.

**7** - Snap the chest clip together and temporarily slide it down towards the buckle for tightening of the harness straps.

**8** - Pull on the adjustment strap to tighten the harness. Slide any excess strap length from the child's waist up through the buckle towards the shoulders, and repeat this step until the harness is secure. You should **NOT** be able to vertically pinch the harness straps at the collarbone area.

**TIP:** The harness should be snug around your child's waist and shoulders. It may take a few adjustments, so be patient!

**(RF - Securing Child in Seat continued on pg. 60)**



---

## RF - Securing Child in Seat: (cont.)

---

**9** - Position the chest clip at the child's armpit level and ensure that the shoulder pads are on **TOP** of the child's shoulders.

**WARNING!** Ensure that nothing interferes with the harness. Ensure that the harness straps are snug around the child and lay flat.

Serious injury or death could occur to a child that is not secured properly. If not secured properly, the child could be ejected in a sudden stop or crash, resulting in serious injury or death.

---

## Check Setup!

**The harness is snug** - A snug harness cannot be pinched vertically at the collarbone area and should not allow any slack. If the harness straps are not snugly adjusted, the child may be ejected from the child restraint in the event of a crash.

**IMPORTANT:** A snug strap should not allow any slack. It lies in a relatively straight line without sagging. It does not press on the child's flesh or push the child's body into an unnatural position.

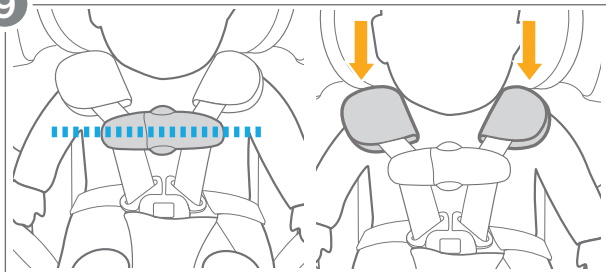
**The chest clip and crotch buckle are secured properly.**

**The chest clip is at the child's armpit level.**

**The child's head is at least 1 in. (2.5 cm) below the top of the headrest.**

**The shoulder straps are at or just below the child's shoulders.**

9



---

## FF - Install Using LATCH:

---

**WARNING!** DO NOT install by this method for a child weighing more than 45 lb. (20 kg).

### **INSTALL USING ONLY ONE METHOD.**

**NEVER** install using **BOTH** vehicle belt and LATCH.

**ONLY** install in a forward-facing vehicle seat.

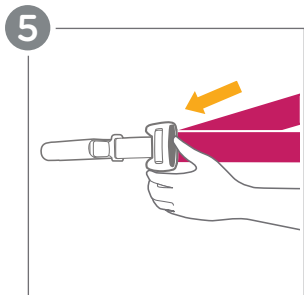
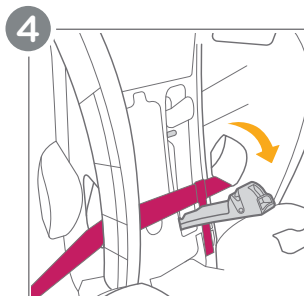
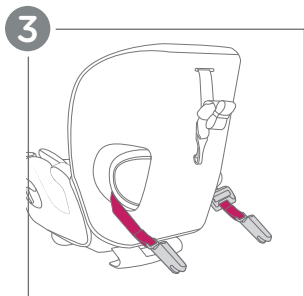
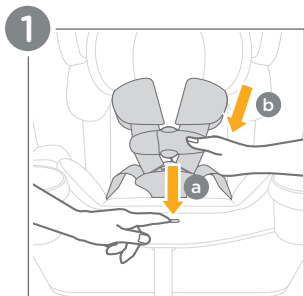
### **Before installing:**

Adjust the recline base and foot (**see pg. 34**).

Properly route the LATCH straps (**see pg. 36**).

- 1** - Loosen the harness straps by pressing the harness adjustment button (a) and pulling on the straps (b).
- 2** - Locate the headrest adjustment lever and squeeze it while moving it up into the highest position.
- 3** - Ensure that the LATCH connectors are removed from the storage position and that the LATCH straps are through the forward-facing belt path (see pg 36.).
- 4** - Lift up on the headrest back fabric and open the lock-off bar.
- 5** - Press the gray button on the LATCH strap adjuster and pull to extend the LATCH strap completely.

**(FF - Install Using LATCH continued on pg. 64)**



---

## FF - Install Using LATCH: (cont.)

---

**6** - Unhook the tether strap from storage. Loosen the tether strap fully by pulling on the release tab (a). Place the child restraint on the vehicle seat and lay the tether strap across the back of the vehicle seat.

**IMPORTANT:** Consult your vehicle's owner manual for the correct install of the tether strap for your vehicle.

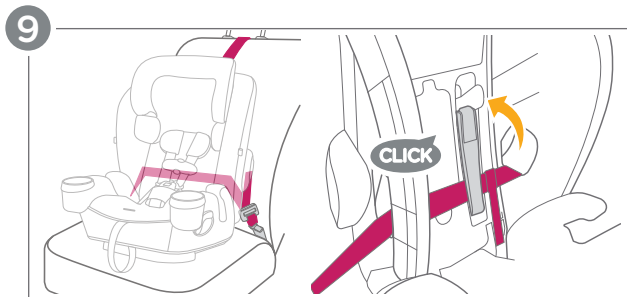
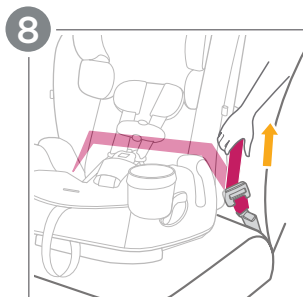
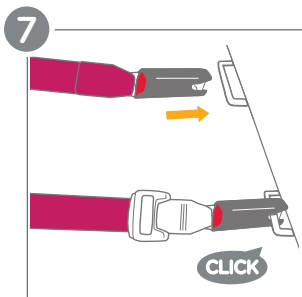
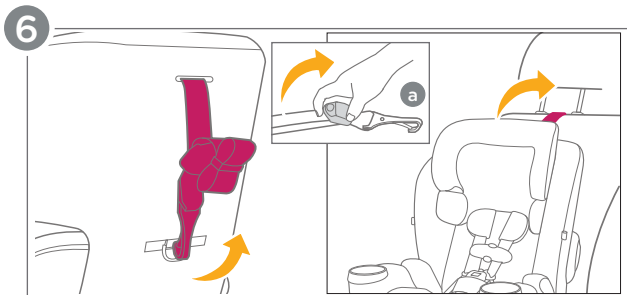
**7** - Attach **BOTH** LATCH connectors to the correct lower anchor points in your vehicle.

**8** - Press down firmly on the child restraint while pulling on the free end of the LATCH strap to remove all the slack out of the LATCH strap.

**9** - Once the LATCH strap is tight, close the lock-off bar until it clicks into place. Keep your hands clear of the lock-off area when closing. Fold the headrest back fabric back into place.

**(FF - Install Using LATCH continued on pg. 66)**





---

## FF - Install Using LATCH: (cont.)

---

**10** - Attach the tether strap to your vehicle's tether attachment point. Pull the loose end of the webbing on the top tether strap to tighten it. There should be no slack in the strap.

**11** - Grab both sides of the child restraint **at the belt path** and push and pull in all directions. The child restraint should be snug and should **NOT MOVE** in any direction **MORE THAN 1 in. (2.5 cm)** at **the belt path**. Ensure that the child restraint does not hang over the front of the vehicle seat.

After installing, continue on to **FF - Securing Child in Seat** on pg. 76.

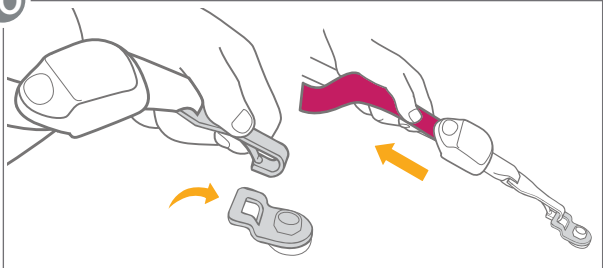
---

## Check Install!

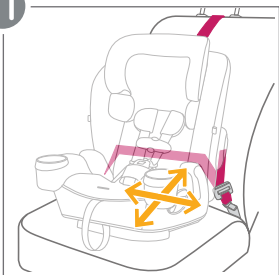
---

- The recline base is adjusted to the correct position.
- The lock-off bar is securely locked, and the tether has no slack.
- The LATCH connectors are properly attached.
- The child restraint should be snug and **NOT MOVE** in any direction more than 1 in. (2.5 cm) at the belt path.

10



11



---

## FF - Install Lap/Shoulder Belt:

---

### INSTALL USING ONLY ONE METHOD.

**NEVER** install using **BOTH** vehicle belt and LATCH.

**ONLY** install in a forward-facing vehicle seat.

### Before installing:

Adjust the recline base and foot (see pg. 34).

Properly store the LATCH (see pg. 82).

**1** - Loosen the harness straps fully, then squeeze the headrest adjustment lever and move the headrest into the highest position.

**2** - Lift up on the headrest back fabric and open the lock-off bar.

**3** - Unhook the tether strap from storage. Loosen the tether strap fully by pulling on the release tab (a). Place the child restraint on the vehicle seat and lay the tether strap across the back of the vehicle seat.

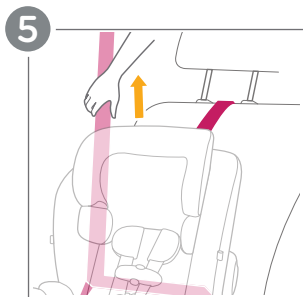
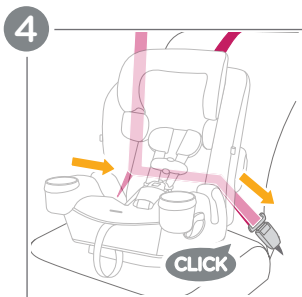
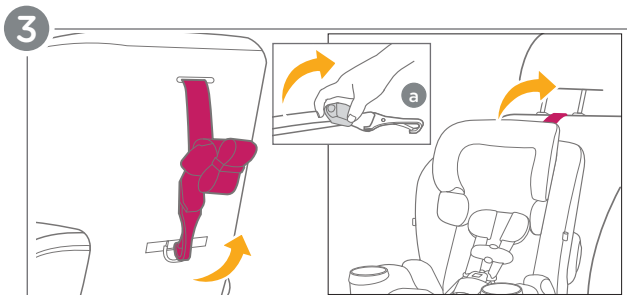
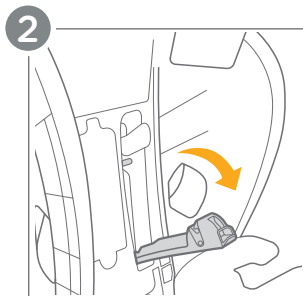
**IMPORTANT:** Consult your vehicle's owner manual for the correct install of the tether strap for your vehicle.

**4** - Thread the lap/shoulder belt through the forward-facing belt path opening, through the lock-off path, and out the other belt path opening. Buckle the lap/shoulder belt.

**IMPORTANT:** Ensure that the vehicle belt is not twisted and lies flat against the child restraint.

**5** - Press down firmly on the child restraint while pulling on the vehicle shoulder belt to remove all the slack.

**(FF - Install Lap/Shoulder Belt continued on pg. 70)**



---

## FF - Install Lap/Shoulder Belt: (cont.)

---

**6** - Once the lap/shoulder belt is tight, close the lock-off bar until it clicks into place. Keep your hands clear of the lock-off area when closing. Fold the headrest back fabric back into place.

**7** - Attach the tether strap to your vehicle's tether attachment point. Pull the loose end of the webbing on the top tether strap to tighten it. There should be no slack in the strap.

**8** - Grab both sides of the child restraint **at the belt path** and push and pull in all directions. The child restraint should be snug and should **NOT MOVE** in any direction **MORE THAN 1 in. (2.5 cm) at the belt path**. Ensure that the child restraint does not hang over the front of the vehicle seat.

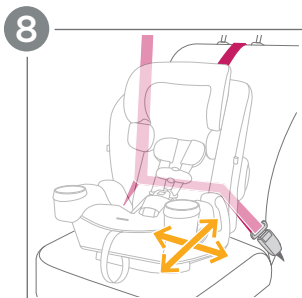
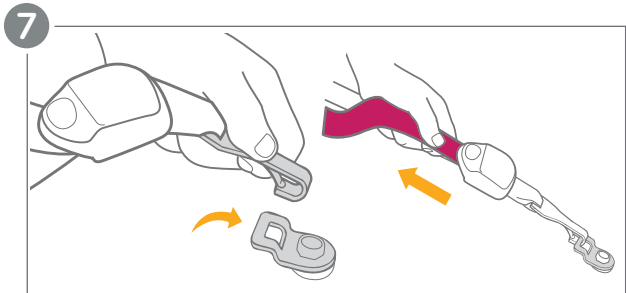
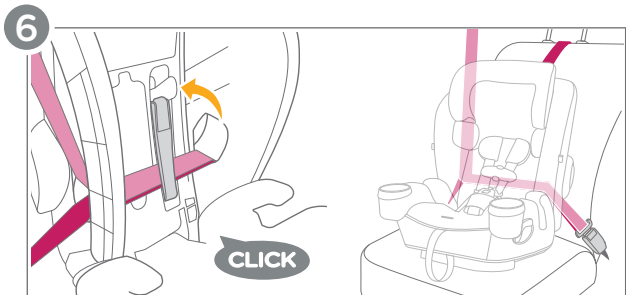
**After installing, continue on to FF - Securing Child in Seat on pg. 76.**

---

## Check Install!

---

- The recline base is adjusted to the correct position.
- The lock-off bar is securely locked, and the tether has no slack.
- The vehicle belt is buckled and is as snug as possible around the child restraint. The vehicle belt is not loose or twisted.
- The child restraint should be snug and **NOT MOVE** in any direction more than 1 in. (2.5 cm) at the belt path.



---

## FF - Install Lap Belt ONLY:

---

### INSTALL USING ONLY ONE METHOD.

**NEVER** install using **BOTH** vehicle belt and LATCH.

**ONLY** install in a forward-facing vehicle seat.

### Before installing:

The seat must be reclined to POSITION 3 (see pg. 34).

Properly store the LATCH (see pg. 82).

- 1 - Loosen the harness straps fully, then squeeze the headrest adjustment lever and move the headrest into the highest position.
- 2 - Lift up on the headrest back fabric and open the lock-off bar.
- 3 - Unhook the tether strap from storage. Loosen the tether strap fully by pulling on the release tab (a). Place the child restraint on the vehicle seat and lay the tether strap across the back of the vehicle seat.

**IMPORTANT:** Consult your vehicle's owner manual for the correct install of the tether strap for your vehicle.

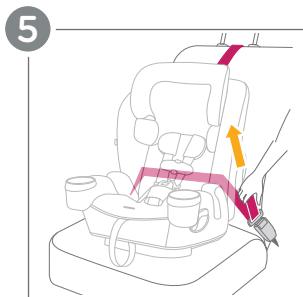
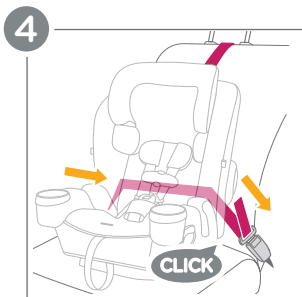
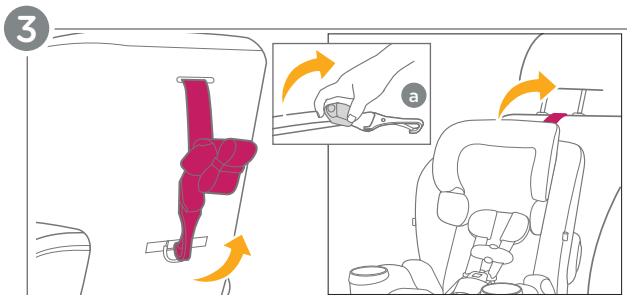
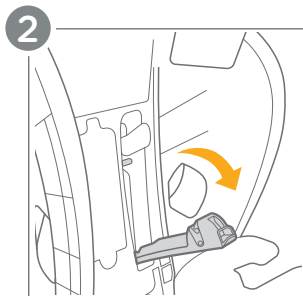
- 4 - Thread the lap belt through the forward-facing belt path opening, through the lock-off path, and out the other belt path opening. Buckle the lap belt.

**IMPORTANT:** Ensure that the vehicle belt is not twisted and lies flat against the child restraint.

- 5 - Press down firmly on the child restraint while pulling on the vehicle lap belt to remove all the slack.

**(FF - Install Lap Belt ONLY continued on pg. 74)**





---

## FF - Install Lap Belt ONLY: (cont.)

---

**6** - Once the lap belt is tight, close the lock-off bar until it clicks into place. Keep your hands clear of the lock-off area when closing. Fold the headrest back fabric back into place.

**7** - Attach the tether strap to your vehicle's tether attachment point. Pull the loose end of the webbing on the top tether strap to tighten it. There should be no slack in the strap.

**8** - Grab both sides of the child restraint **at the belt path** and push and pull in all directions. The child restraint should be snug and should **NOT MOVE** in any direction **MORE THAN 1 in. (2.5 cm) at the belt path**. Ensure that the child restraint does not hang over the front of the vehicle seat.

**After installing, continue on to FF - Securing Child in Seat on pg. 76.**

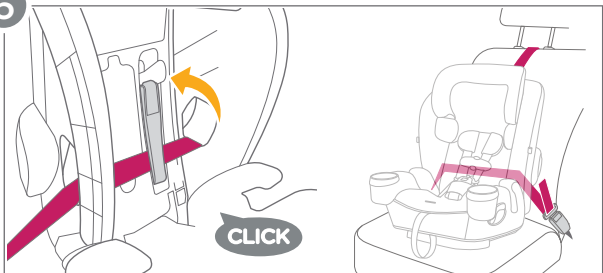
---

## Check Install!

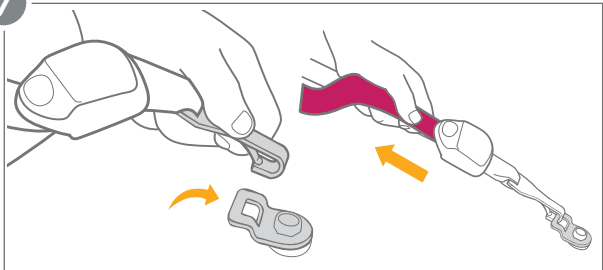
---

- The recline base is adjusted to Position 3.
- The lock-off bar is securely locked, and the tether has no slack.
- The vehicle belt is buckled and is as snug as possible around the child restraint. The vehicle belt is not loose or twisted.
- The child restraint should be snug and **NOT MOVE** in any direction more than 1 in. (2.5 cm) at the belt path.

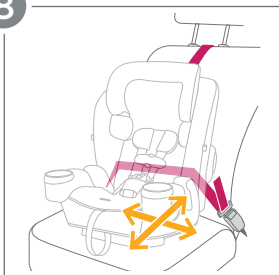
6



7



8



---

## FF - Securing Child in Seat:

---

**WARNING!** NEVER use the harness pads for children weighing more than 40 lb. (18 kg).

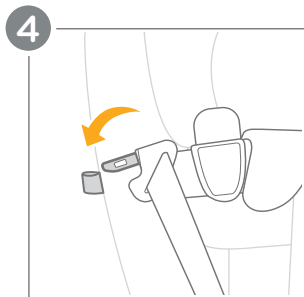
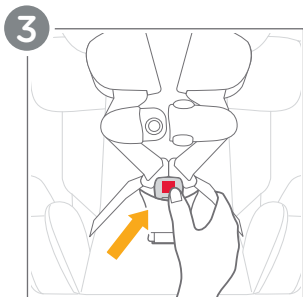
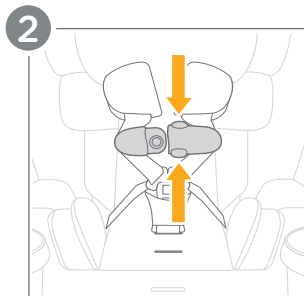
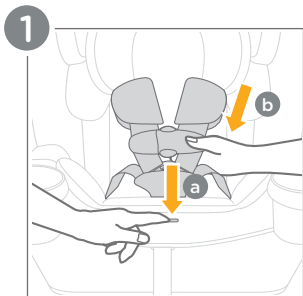
**IMPORTANT:** NEVER use the infant insert when forward-facing.

- 1 - Loosen the harness straps by pressing the harness adjustment button (a) and pulling on the straps (b).
- 2 - Press the release buttons on the chest clip to separate.
- 3 - Press the release button to remove the buckle tongues from the crotch buckle.
- 4 - Spread the harness straps apart and insert the buckle tongues into the harness buckle holders on either side of the child restraint. Place your child in the child restraint and gently guide the child's arms through the harness straps.

**WARNING:** The child must be in a seated position against both the back and bottom of the seat with no gap behind the child. **DO NOT** allow the child to slouch.

For forward-facing use, the harness straps must be at or just above the child's shoulders to avoid injury.

**(FF - Securing Child in Seat continued on pg. 78)**



---

## FF - Securing Child in Seat: (cont.)

---

**5** - Insert the buckle tongues into the crotch buckle. Listen for a **CLICK**. Pull on the crotch buckle to ensure that it is properly latched.

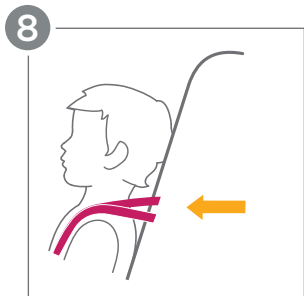
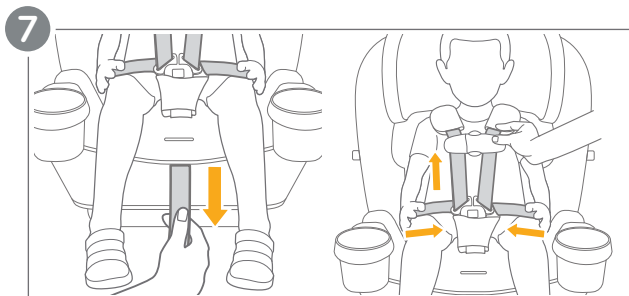
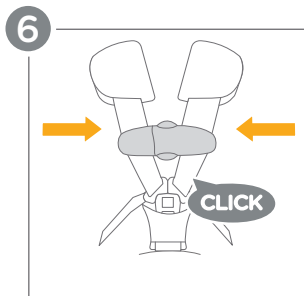
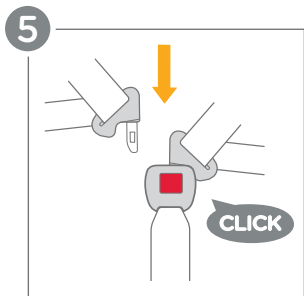
**6** - Snap the chest clip together and temporarily slide it down towards the buckle for tightening of the harness straps.

**7** - Pull on the adjustment strap to tighten the harness. Slide any excess strap length from the child's waist up through the buckle towards the shoulders, and repeat this step until the harness is secure. You should **NOT** be able to vertically pinch the harness straps at the collarbone area.

**TIP:** The harness should be snug around your child's waist and shoulders. It may take a few adjustments, so be patient!

**8** - The harness straps should be at or just **ABOVE** the child's shoulders. If **NOT**, please refer to Headrest Height Adjustment on pg. 26.

**(FF - Securing Child in Seat continued on pg. 80)**



---

## FF - Securing Child in Seat: (cont.)

---

9 - Position the chest clip at the child's armpit level.

**WARNING!** Ensure that nothing interferes with the harness. Ensure that the harness straps are snug around the child and lay flat.

Serious injury or death could occur to a child that is not secured properly. If not secured properly, the child could be ejected in a sudden stop or crash, resulting in serious injury or death.

---

## Check Setup!

---

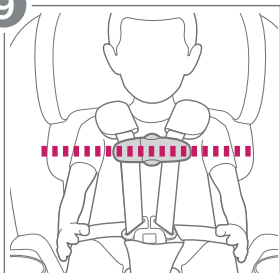
**The harness is snug** - A snug harness cannot be pinched vertically at the collarbone area and should not allow any slack. If the harness straps are not snugly adjusted, the child may be ejected from the child restraint in the event of a crash.

**IMPORTANT:** A snug strap should not allow any slack. It lies in a relatively straight line without sagging. It does not press on the child's flesh or push the child's body into an unnatural position.

- The chest clip and crotch buckle are secured properly.**
- The chest clip is at child's armpit level.**
- The shoulder straps are at or just above the child's shoulders.**



9

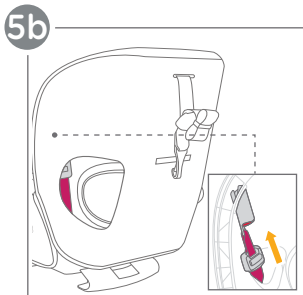
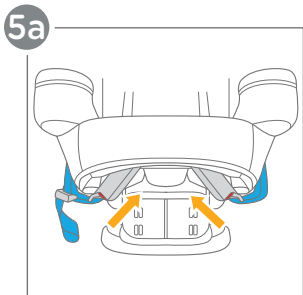
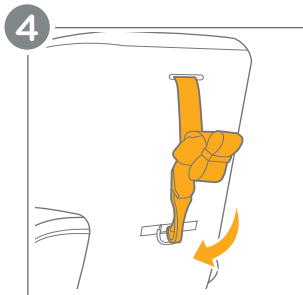
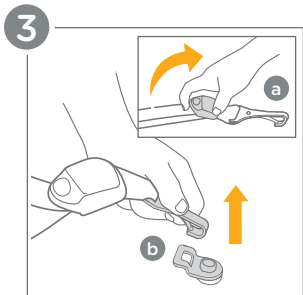
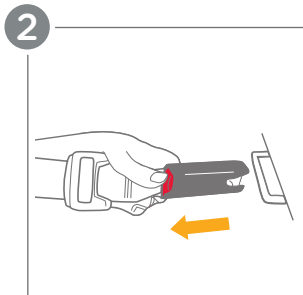
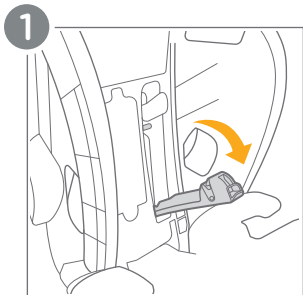


---

## Removing LATCH and Tether:

---

- 1** - Loosen the harness straps fully and raise the headrest into the highest position. Lift up on the headrest back fabric and open the lock-off bar.
- 2** - Press the red buttons on both LATCH connectors and pull to remove them from the lower anchor points in your vehicle.
- 3** - Lift the tether release tab and pull to release it (a). Then unclip the tether from your vehicle (b).
- 4** - Store the tether strap on the clip on the back of the child restraint when not in use.
- 5** - Store the LATCH connectors on the storage hooks when not in use:
  - a. Rear-Facing Path:** Store on the storage hooks located on the front of the child restraint near the recline adjustment lever.
  - b. Forward-Facing Path:** Store on the storage hooks located on the back of the child restraint under the fabric.



---

## Highback Booster - Install:

---

### Before installing:

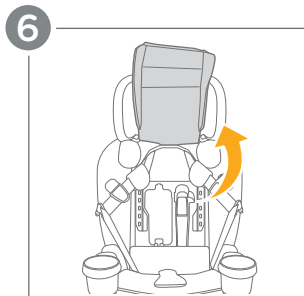
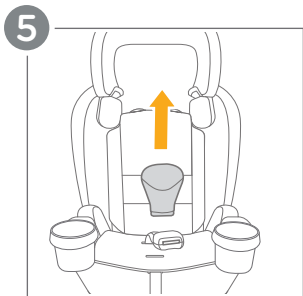
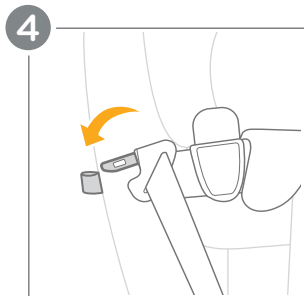
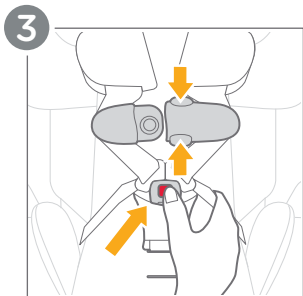
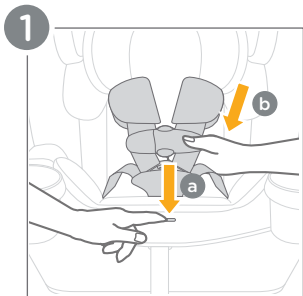
Adjust the recline to POSITION 1 (see pg. 34).

Remove the side impact bolster (see pg. 42).

Properly store the LATCH and tether (see pg. 82).

- 1 - Loosen the harness straps by pressing the harness adjustment button (a) and pulling on the straps (b).
- 2 - Squeeze the headrest adjustment lever and move the headrest into the highest position.
- 3 - Press the release buttons on the chest clip to separate. Then press the release button to remove the buckle tongues from the crotch buckle.
- 4 - Spread the harness straps apart and insert the buckle tongues into the harness buckle holders on either side of the child restraint.
- 5 - Remove the crotch pad.
- 6 - Lift the headrest pad flap up and out of the way.

**(Highback Booster - Install continued on pg. 86)**



---

## Highback Booster - Install: (cont.)

---

**7** - Undo the two snaps on the back of the seat pad and pull forward.

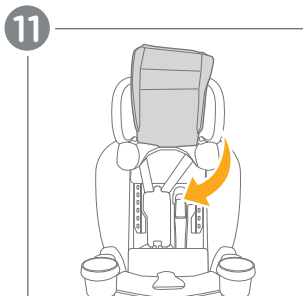
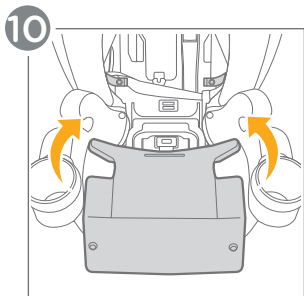
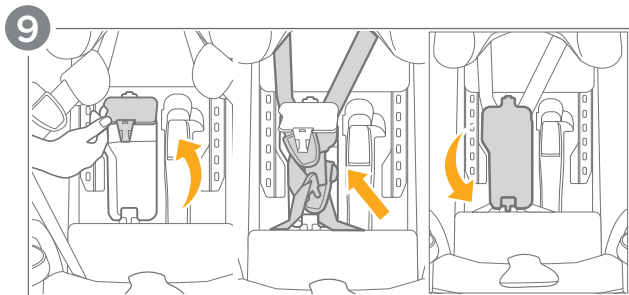
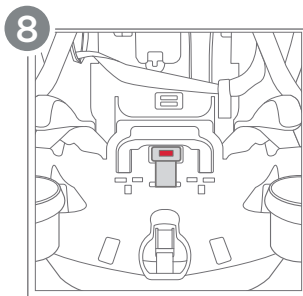
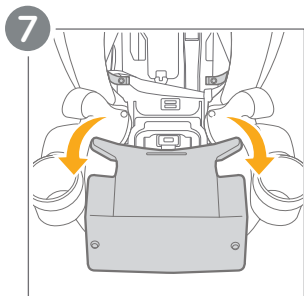
**8** - Store the crotch buckle in the seat shell.

**9** - Open the harness storage door and place the harness, chest clip, buckle tongues, and harness covers inside the storage compartment and close the door.

**10** - Push the seat fabric back into place and snap the two snaps on the bottom of the seat pad back into place.

**11** - Push the headrest pad flap back down into place.

**After installing, continue on to [Highback Booster Securing Child](#) on pg. 88.**



---

## Highback Booster Securing Child:

---

**WARNING!** Use only the vehicle's lap and shoulder belt system when restraining the child in the booster seat. **NEVER USE A LAP-ONLY BELT.**

Your child must be able to sit upright and keep the vehicle lap/shoulder belt properly secured over their chest and lap throughout the car ride. If your child is unable to do so, please secure your child in this child restraint using the 5-point harness in forward-facing mode.

- 1** - Thread the vehicle's shoulder belt into the seat belt guide in the headrest.
- 2** - Place the child on the child restraint and buckle them in (a). Ensure that the lap and shoulder belt are **BOTH UNDER** the armrest nearest the vehicle buckle (b).

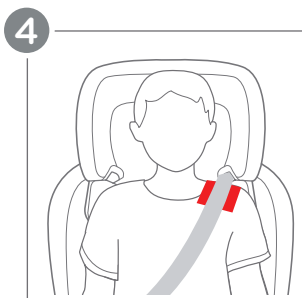
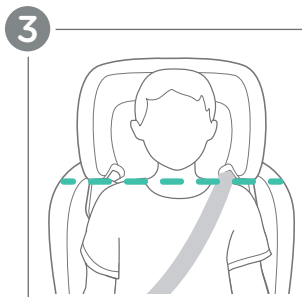
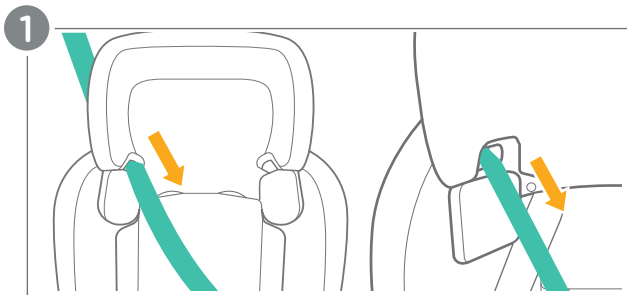
**WARNING: DO NOT** position the vehicle shoulder belt under the child's arm or behind their back.

**WARNING: DO NOT** position the vehicle belt over top of armrests.

- 3** - The bottom of the head support **MUST** be level with the top of your child's shoulders. If **NOT**, please refer to Headrest Height Adjustment on pg. 26.
- 4** - The shoulder belt **MUST** be positioned in the red zone when properly adjusted. Ensure that the shoulder belt lays flat against your child's chest and is not twisted.

**WARNING:** The child must be in a seated position against both the back and bottom of the seat with no gap behind the child. **DO NOT** allow the child to slouch.





---

## Backless Booster - Install/Use:

---

**WARNING!** Use only the vehicle's lap and shoulder belt system when restraining the child in the booster seat. **NEVER USE A LAP-ONLY BELT.**

Your child must be able to sit upright and keep the vehicle lap/shoulder belt properly secured over their chest and lap throughout the car ride. If your child is unable to do so, please secure your child in this child restraint using the 5-point harness in forward-facing mode.

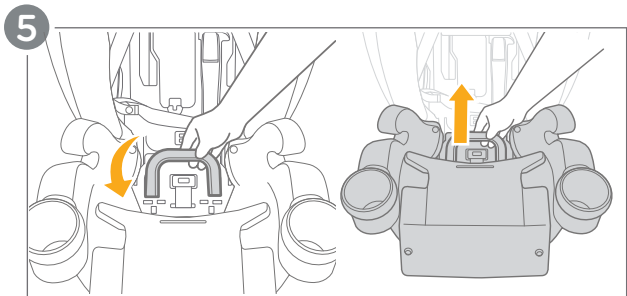
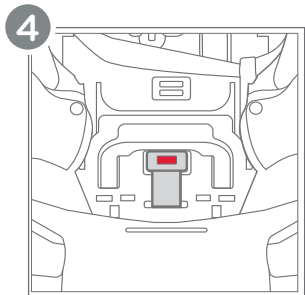
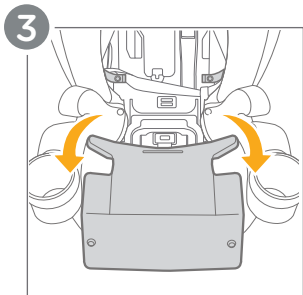
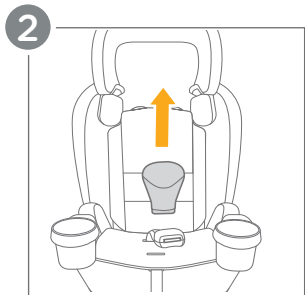
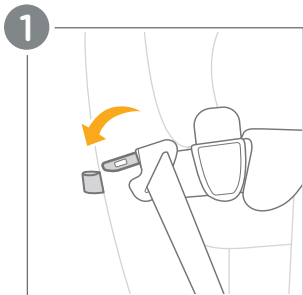
### Before installing:

LATCH stored in forward-facing position **(see pg. 82)**.  
Remove the side impact bolster **(see pg. 42)**.

**Tip** The manual may be stored on the underside of the backless booster in the designated slots.

- 1 - Spread the harness straps apart and insert the buckle tongues into the harness buckle holders on either side of the child restraint.
- 2 - Remove the crotch pad.
- 3 - Undo the two snaps on the bottom of the seat pad and pull forward.
- 4 - Store the crotch buckle in the seat shell.
- 5 - Lift the backless booster release handle up firmly and pull the booster base up and away from the child restraint back.

**(Backless Booster - Install/Use continued on pg. 92)**



---

## Backless Booster - Install/Use: (cont.)

---

**7** - Keep the back panel of the seat pad out and hook the two elastic loops to the pegs on the underside of the seat.

**8** - Insert the loop end of the belt positioning strap through the slot on the back of the booster base (a). Then, push the clip through the loop to secure (b).

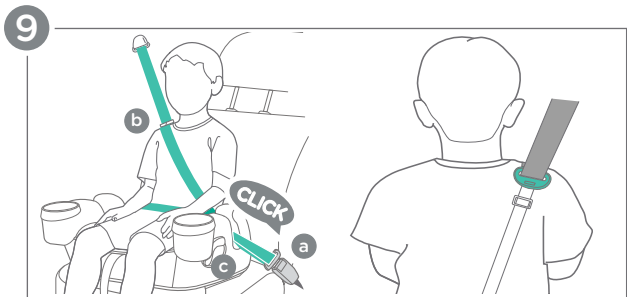
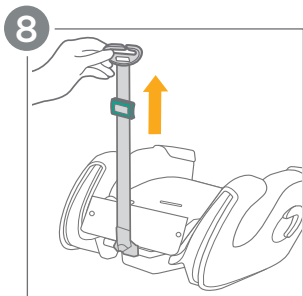
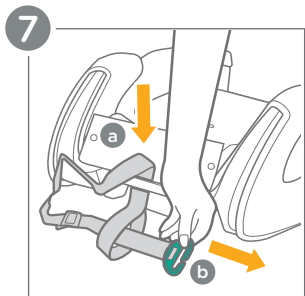
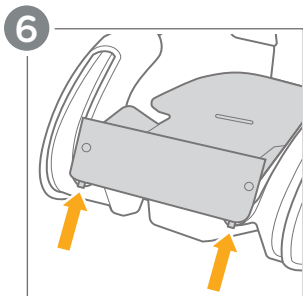
**9** - Slide the shoulder harness anchor to adjust the strap length.

**10** - Place the child on the child restraint and buckle them in (a). Attach the belt positioning clip to the shoulder strap (b). Ensure that the lap and shoulder belt are **BOTH UNDER** the armrest nearest the vehicle buckle (c).

**WARNING:** DO NOT allow the child to slouch.

**WARNING:** DO NOT position the vehicle shoulder belt under the child's arm or behind their back.

**WARNING:** DO NOT position the vehicle belt over top of the armrests.

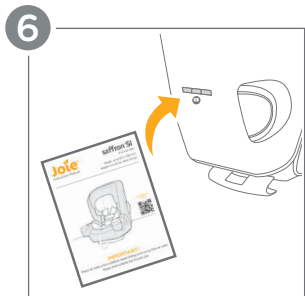
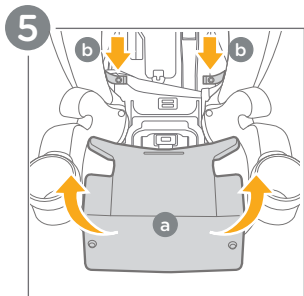
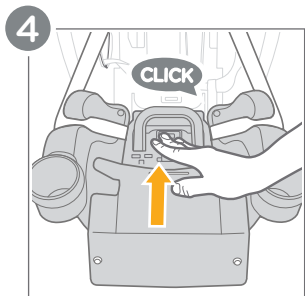
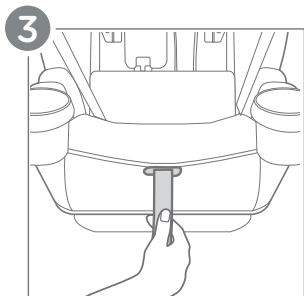
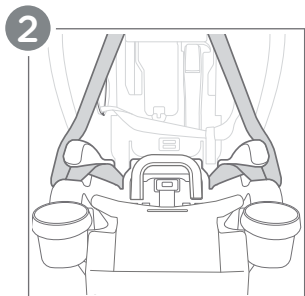
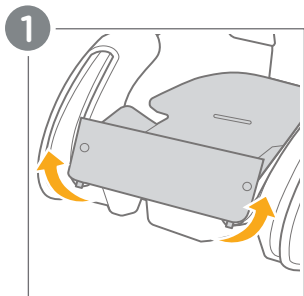


---

## Reattaching Backless Booster:

---

- 1** - Unhook the two elastic loops on the seat pad from the pegs on the underside of the seat. Flip the seat pad towards the front of the seat.
- 2** - Place the booster base on the child restraint back. Thread the harness straps through the slots on either side of the backless booster release handle in the booster base.
- 3** - Unthread the adjustment strap from its current position and rethread it up through the opening on the front of the booster base.
- 4** - Push the booster base down firmly into the child restraint back. A “clicking” sound will confirm that the booster is properly locked in place.
- 5** - Fold the seat pad back into place (a) and redo the snaps on the back of the seat pad (b).
- 6** - Place the manual in the compartment on the back of the child restraint.



---

## Removing Softgoods:

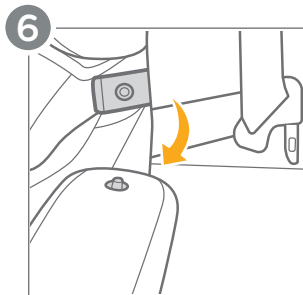
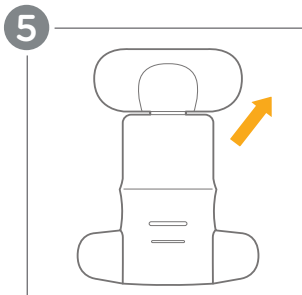
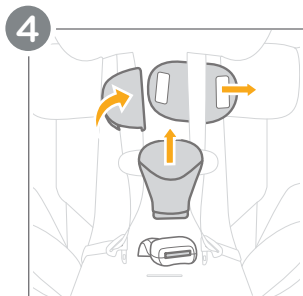
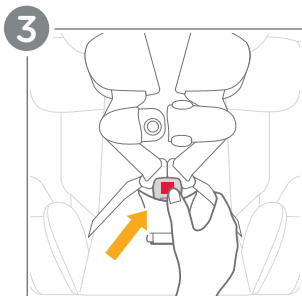
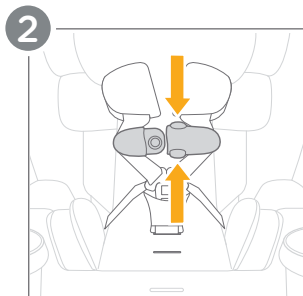
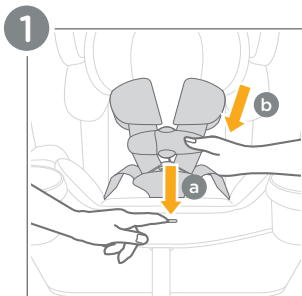
---

**WARNING!** NEVER use the child restraint without the softgoods in place.

- 1** - Loosen the harness straps by pressing the harness adjustment button (a) and pulling on the straps (b).
- 2** - Press the release button on the chest clip to separate.
- 3** - Press the release buttons to remove the buckle tongues from the crotch buckle.
- 4** - Remove the crotch pad and the harness pads.
- 5** - Remove the infant insert by threading the crotch buckle through the pad.
- 6** - Undo the snaps on either side of the side impact bolster.

**(Removing Softgoods continued on pg. 98)**





---

## Removing Softgoods: (cont.)

---

**7** - Remove the side impact bolster by threading the crotch buckle through the pad.

**8** - Undo the hooks on both sides of the back of the headrest.

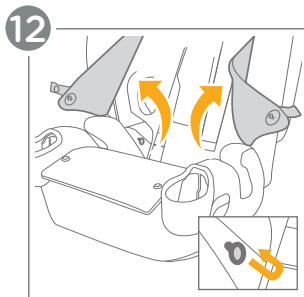
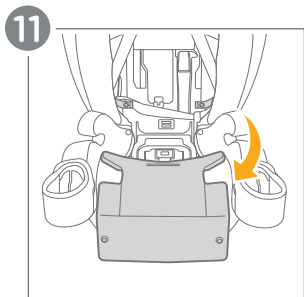
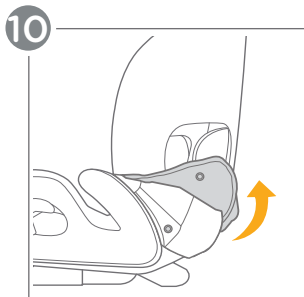
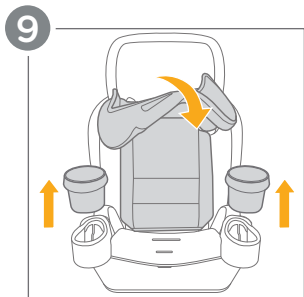
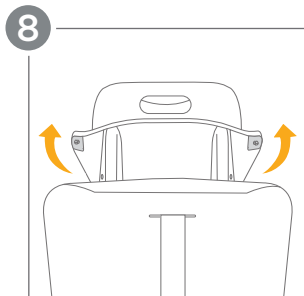
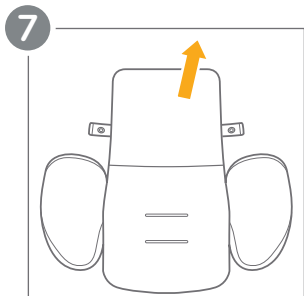
**9** - Remove the headrest fabric. Then pull firmly straight up on the cup holders to remove.

**10** - Undo the snaps on both sides of the child restraint.

**11** - Undo the two snaps on the back of the seat pad and pull forward.

**12** - Undo the hooks on both sides on the inside of the seat shell.

**(Removing Softgoods continued on pg. 100)**



---

## Removing Softgoods: (cont.)

---

**13** - Unhook the tether and feed it through the fabric slot.

**14** - Undo the clips near the headrest and remove the back softgoods.

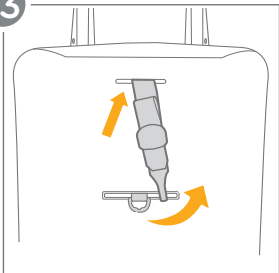
**15** - Undo the snaps on the inside of the seat shell.

**16** - Undo the snaps on both sides of the child restraint base.

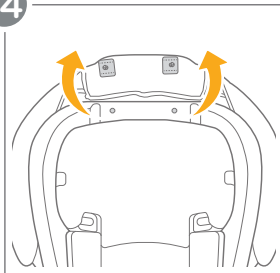
**17** - Remove the base softgoods.

**To reassemble, follow these steps in reverse order.**

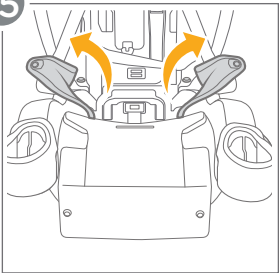
13



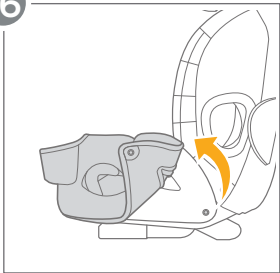
14



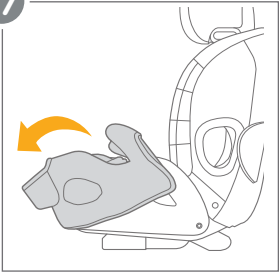
15



16



17



---

## Removing Cup Holders:

---

**1** - To remove, pull straight up on the cup holders.

**IMPORTANT:** Cup holders **MUST** be installed when using the car seat.

**IMPORTANT:** **NEVER** put hot liquids in the cup holders.

**IMPORTANT:** The maximum recommended weight in each cup holder is 1 lb. (0.5 kg).

1



---

## Care and Maintenance:

---

### Washing:

Refer to the care label attached to the fabrics for washing and drying instructions. **DO NOT** attempt to remove the foam or tape under the seat pad.

### Cleaning:

Use only mild detergent, water, and a soft cloth to clean the child restraint shell and harness straps. Spot clean the harness only. Never immerse the harness in water. Air dry after cleaning. **DO NOT** iron the harness straps. **NEVER** use bleach or any other harsh chemicals anywhere on the child restraint.

### Crotch Buckle Care:

Rinse the crotch buckle using warm water only. **Do not** use soaps, solvents, or lubricants. These can cause the buckle to malfunction. Air dry the buckle.

### Cup Holder Care:

Remove the cup holders following the instructions on page 102. Use mild detergent and warm water. The cup holders can also be placed on the top rack of your dishwasher for convenient cleaning.



---

## Care and Maintenance:

---

### **Storage:**

When not in use for a long period, remove the child restraint from the vehicle. Store the child restraint in a cool, dry place that your child does not have access to.

### **Normal Wear and Tear:**

It is normal for the fabric to fade from sunlight and show wear and tear over time, even when used normally.

### **Regular Checks:**

Regularly check that everything functions properly. If any parts are torn, broken, or missing, stop using immediately and contact Joie Consumer Service for replacement parts.

### **Joie Baby USA Consumer Service Contact Info**

**Address:** 70 Thousand Oaks Blvd., Morgantown, PA 19543

**Email:** [info.us@joiebaby.com](mailto:info.us@joiebaby.com)

**Phone:** 1-866-798-7866

**Joie™**

**Effortlessly happy.**

Helping parents be their best  
with worry-free baby gear.