



Instruction Manual

# sesame™ lx

playard with bassinet and changer

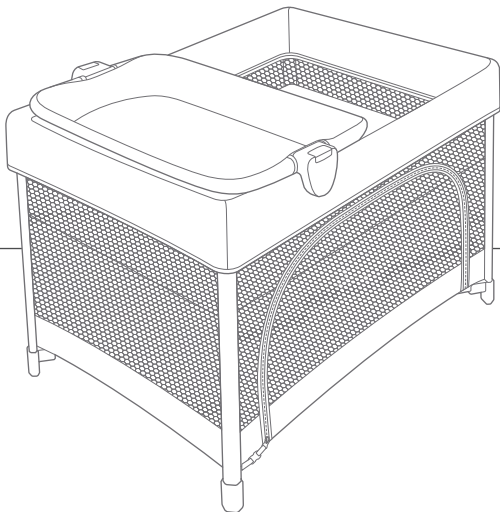
**Playard** – Weight: up to 30 lb. (14 kg)

Height: up to 35 in. (89 cm)

**Bassinet** – Weight: up to 15 lb. (6.8 kg)

**Changer** – Weight: up to 25 lb. (11.3 kg)

---



## IMPORTANT!

Read all instructions before assembling and using the product.

Keep instructions for future use.

## Contents:

- 3 Warranty Information
- 4 Warnings
- 10 Parts List
- 12 Assembling Bassinet
- 14 Assembling Playard
- 16 Attaching and Detaching Changer
- 18 Free Play Mode
- 20 Folding Playard
- 22 Using Carry Bag
- 24 Care & Maintenance

## Child Usage Requirements

This playard is suitable for use with children who meet the following requirements:

Weight: up to 30 lb. (14 kg)

Height: up to 35 in. (89 cm)

Discontinue use of the playard when the child is able to climb out, reaches the height of 35 in. (89 cm), or weighs more than 30 lb. (14 kg), whichever comes first.

Discontinue use of the bassinet portion of this product when the child can push up on their hands and knees (approx. 3–5 months) or weighs more than 15 lb. (6.8 kg), whichever comes first.

Discontinue use of the changer portion of this product when the child weighs more than 25 lb. (11.3 kg).

## Warranty Information:

### Product Registration

Please fill in the information below. The model number and the date of manufacture are located on a label on the playard frame. Fill out the prepaid registration postcard attached to the product and mail it today. To register your product online, please visit: <https://joiebaby.com/us/register-gear>.

Model Name: \_\_\_\_\_

Model Number: \_\_\_\_\_

Date of Manufacture: \_\_\_\_\_

Date of Purchase: \_\_\_\_\_

register your  
product online



### Limited Warranty

We have purposely designed our high-quality products so that they can grow with both your child and your family. Because we stand by our product, our gear is covered by a custom limited warranty per product, starting from the day it was purchased. Please have the proof of purchase, model number, and date of manufacture available when you contact us. For warranty information, please visit: [www.joiebaby.com/us](http://www.joiebaby.com/us).

### Contact

#### Joie Baby USA Consumer Service Contact Info.

Address: 70 Thousand Oaks Blvd., Morgantown, PA 19543

Email: [info.us@joiebaby.com](mailto:info.us@joiebaby.com)

Phone: 1-866-798-7866

---

## WARNING

---

Failure to follow these warnings and the instructions could result in serious injury or death.

- **Be sure the product is completely set up** before use, including the side rails fully erected and locked in position.
- **Be sure the mattress is flat and secured** by the snaps before using the playard.
- **Ensure that the side rails are fully erect and locked** in position whenever the child is in the product.
- The playard is for playing or sleeping. When used for playing, **NEVER** leave the child unattended and **ALWAYS** keep the child in view. When used for sleeping, you must still provide the supervision necessary for the continued safety of your child.
- **Discontinue use of the playard** when the child is able to climb out, reaches the height of 35 in. (89 cm), or weighs more than 30 lb. (14 kg), whichever comes first.
- **Discontinue use of the changer** when the child weighs more than 25 lb. (11.3 kg).
- **FALL HAZARD: Discontinue use of the bassinet** when the child can push up on their hands and knees (approx. 3–5 months) or weighs more than 15 lb. (6.8 kg), whichever comes first.

---

## WARNING

---

Failure to follow these warnings and the instructions could result in serious injury or death.

- **Child can become entrapped and die** when improvised netting or covers are placed on top of the product. **NEVER** add such items to confine the child in the product.
- **NEVER** use the product if there are any loose or missing fasteners, loose joints, broken parts, or torn mesh/fabric. Check before assembly and periodically during use. Contact Joie for replacement parts. **NEVER** substitute parts.
- **When child is able to pull to a standing position**, remove large toys and other objects that could serve as steps for climbing out.
- **ALWAYS** place baby on back to sleep to reduce the risks of SIDS and suffocation.
- **NEVER** leave the child in the product with the side lowered. Be sure the side is in a raised and locked position whenever the child is in the product.
- **DO NOT** leave the child unattended.

---

## WARNING

---

Failure to follow these warnings and the instructions could result in serious injury or death.

- If a sheet is used with the mattress, **ONLY** use one specifically designed to fit the dimensions of the mattress (approx. 38 in. (96.5 cm) long, 26.5 in. (67.3 cm) wide, and 0.875 in. (2.2 cm) thick). Ensure that the sheet fits securely on the mattress and the mattress snap straps can be properly secured in playard mode.
- **DO NOT** modify the playard or add any attachments or accessories that are not listed in this manual.
- **DO NOT** place the product close to an open fire, candles, or other heat source such as a stove, heater, fireplace, electric bar fires, gas fires, and other hazards which can cause injury to your child.
- **The bassinet must be fully assembled** and installed before use, including the zipper completely zipped and mattress laid flat.
- **You are responsible to provide** adult supervision when using the bassinet or playard.
- **ALWAYS** keep the bassinet away from hazards in the area that may injure your child.
- **Use the bassinet with ONLY** one child at a time.

---

## WARNING

---

Failure to follow these warnings and the instructions could result in serious injury or death.

### SUFFOCATION HAZARDS

**Babies have suffocated:**

- on pillows, comforters, and extra padding.
- in gaps between product sides and a wrong-size mattress or extra padding.
- **NEVER** add pillows, soft bedding, comforters, padding, or an extra mattress.
- **ONLY** use the mattress as described in the warnings on the product.
- Use **ONLY** the mattress provided by Joie. Using a thicker or a different sized mattress may allow a child's head to get between the mattress/pad and side of the playard, causing suffocation. Contact Joie for a replacement mattress.
- **NEVER** use plastic shipping bags or other plastic film as mattress covers. They can cause suffocation.
- **NEVER** use a water mattress with this product.

---

## WARNING

---

Failure to follow these warnings and the instructions could result in serious injury or death.

### SUFFOCATION HAZARDS

- **Babies have suffocated** while sleeping in changing tables. Changing tables are not designed for safe sleeping.
- **NEVER** allow a baby to sleep in the changing table.

### STRANGULATION HAZARDS

- **Children have STRANGLED** when their necks became trapped between accessories and playard frames.
- **Remove the bassinet and changer** any time a child is in the playard.
- **Strings can cause strangulation! NEVER** place items with a string around a child's neck such as hood strings or pacifier cords. **NEVER** suspend strings on or over the product or attach strings to toys.
- **NEVER** place the product near a window where cords from blinds or drapes can strangle a child.

---

## WARNING

---

### FALL HAZARDS

- **To help prevent falls, DO NOT** use the bassinet when the infant begins to push up on hands and knees or has reached 15 lb. (6.8 kg), whichever comes first.
- **Children have suffered serious injuries** after falling from changing tables. Falls can happen quickly.
- **STAY** in arm's reach of your child.
- **ALWAYS** secure the changer to the support frame by attaching the changer onto the long rails of the playard in **ONLY** the designated areas. See instructions in this manual.
- **DO NOT** use the changer or mattress on a bed, counter, or other elevated surfaces.
- **DO NOT** carry the child in changer or on mattress.

### ENTRAPMENT HAZARDS

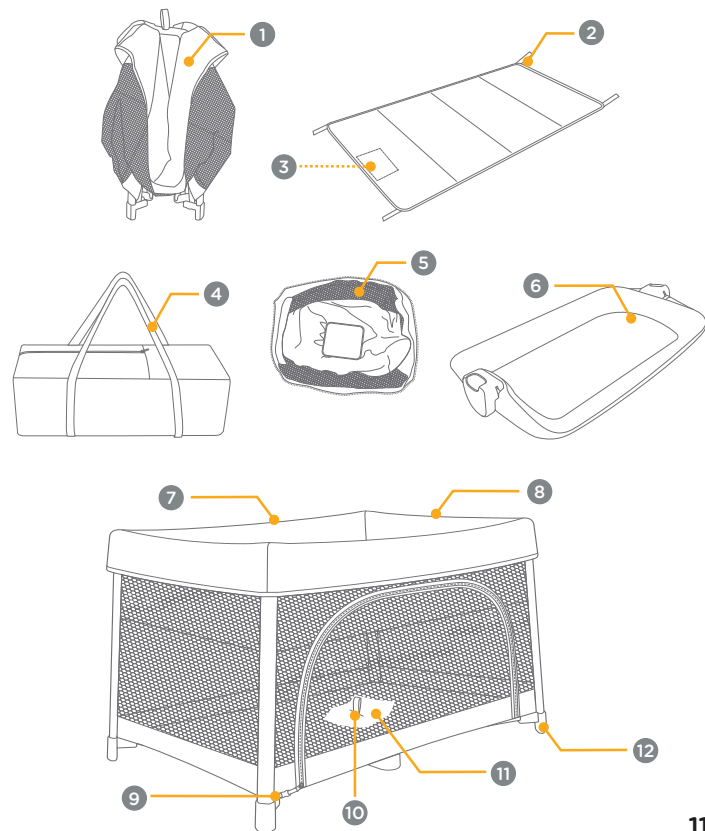
- **NEVER** leave the bassinet or changer in place when a child is in the playard.
- **DO NOT** modify the bassinet or add any attachments or accessories that are not listed in this manual.
- **NEVER** place a child under the bassinet.

## Parts List:

Please make sure there are no missing parts. Please contact Joie Consumer Service if anything is missing.

- 1 Playard
- 2 Mattress
- 3 Instruction Storage Pocket
- 4 Carry Bag
- 5 Bassinet
- 6 Changer
- 7 Long Rail (x2)
- 8 Short Rail (x2)
- 9 Playard Zipper Buckle
- 10 Folding Webbing
- 11 Bottom Hub
- 12 Foot (x4)

## Parts List:



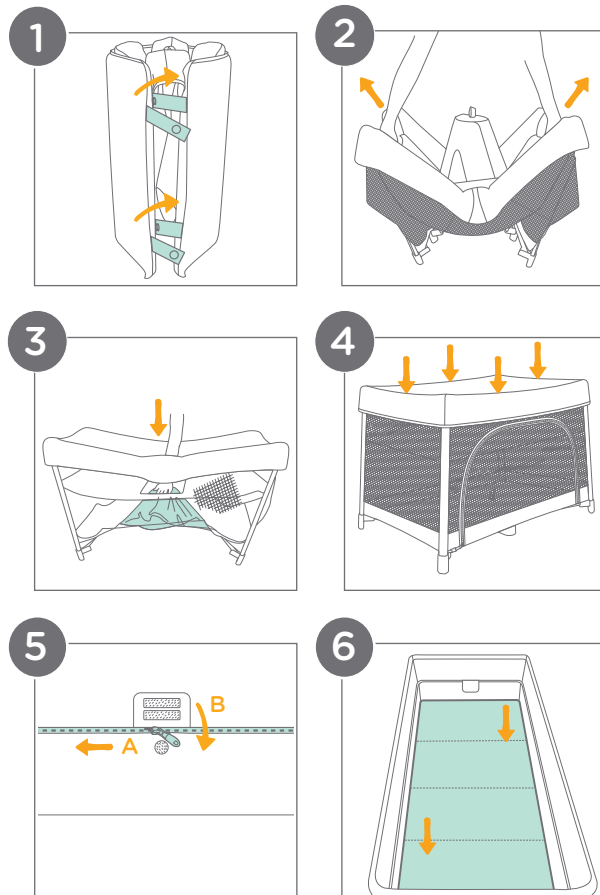
## Assembling Bassinet:

- 1 - Undo the snaps at the top and bottom of the mattress. Remove the mattress from around the playard.
- 2 - Pull up and out on the short rails of the playard, spreading the playard base out.
- 3 - Push the center of the playard down. The sides will automatically lock into position.
- 4 - Push down on all top rails of the playard to ensure that they are fully erected and locked.
- 5 - Install the bassinet by attaching the bassinet zipper pull to the zipper path (A) near the top of the playard and zipping all the way around, starting at the left. Ensure that there are no gaps before using.  
Secure the hook and loop fasteners to cover the zipper (B).
- 6 - Place the mattress into the bassinet.

**IMPORTANT:** Ensure that the mattress is completely flat and installed soft side up, with the snaps and straps tucked underneath.

**Before using, ensure that the bassinet is completely zipped without any gaps.**

**WARNING!** Discontinue use of the bassinet when the child can push up on their hands and knees (approx. 3-5 months) or weighs more than 15 lb. (6.8 kg), whichever comes first.



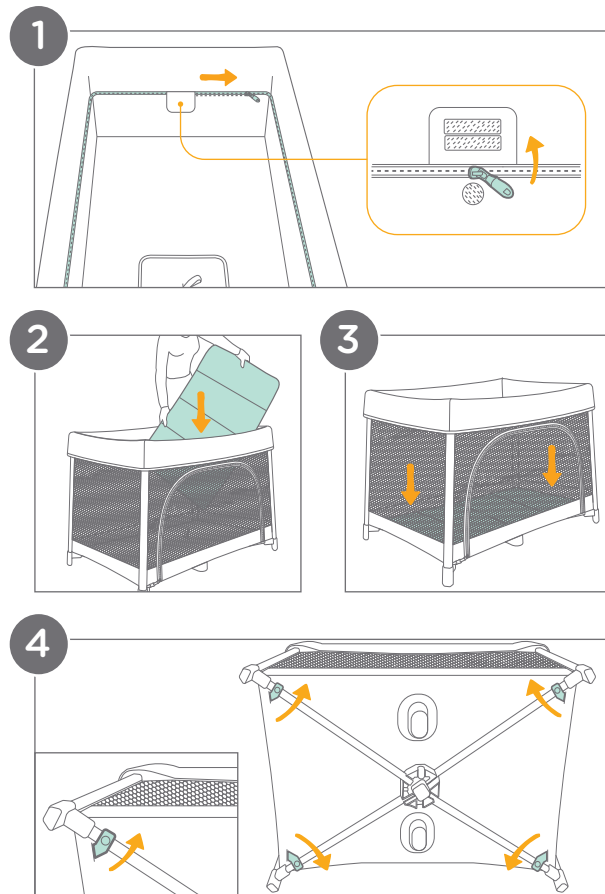
## Assembling Playard:

**IMPORTANT:** Before setting up the playard, push down on all rails of the playard to ensure that they are fully erected and locked.

- 1 - Detach the bassinet by unzipping the zipper all the way around. Remove the bassinet completely from the playard. When not in use, store the bassinet where your child cannot access it.
- 2 - Place the mattress into the playard.
- 3 - Ensure that the mattress is installed soft side up.
- 4 - Attach the mattress to the frame by feeding the straps on the mattress corners through the slots in the bottom of the playard. Pull the strap through the slot and fasten the snap onto the playard frame. Repeat on the other corners.

**IMPORTANT:** Pull up on all four corners of the mattress to ensure that the mattress is secured to the bottom of the playard.

**WARNING!** Discontinue use of the playard when the child is able to climb out, reaches the height of 35 in. (89 cm), or weighs more than 30 lb. (14 kg), whichever comes first.





## Attaching & Detaching Changer:

### Attaching the Changer:

- 1 - Unfold the changer by pulling up on the sides to make it flat.
- 2 - Attach the changer onto the top long rails of the playard in **ONLY** the areas designated with this arrow: ▼

A “clicking” sound will confirm that the changer is properly locked in place.

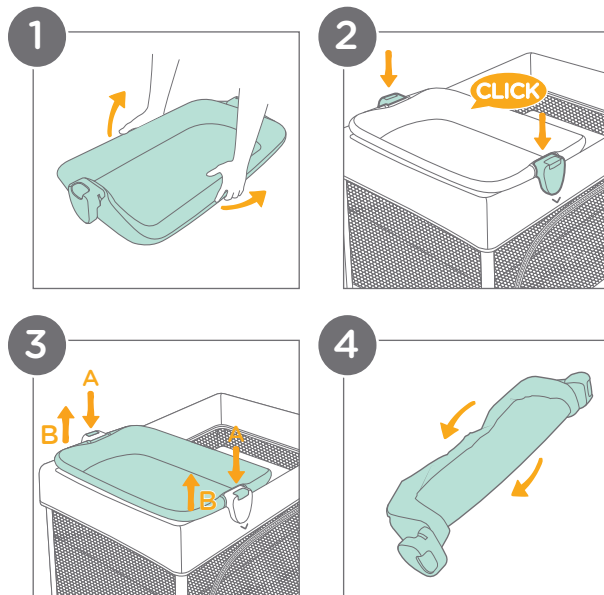
### Detaching the Changer:

- 3 - Press and hold in the changer release buttons (A) and lift the changer off (B).
- 4 - Push down on both sides of the changer to fold it for storage. When not in use, store the changer where your child cannot access it.

**WARNING!** Discontinue use of the changer when the child weighs more than 25 lb. (11.3 kg).

Use the included changer **ONLY** with this specific playard model.

**NEVER** use the changing area on the floor, bed, counter, or any other surface.

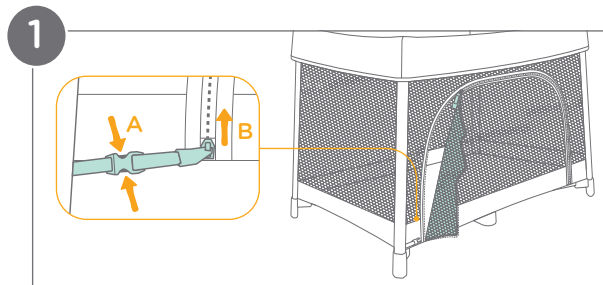


## Free Play Mode:

**WARNING:** Ensure that the zipper is closed and the playard zipper buckle is locked when using as a playard, bassinet, or changer.

- 1 - For Free Play Mode, release the playard zipper buckle (A) and unzip the front of the playard (B) for your child to conveniently enter and exit.

**IMPORTANT:** Ensure that the bassinet and changer are removed and that the mattress is installed on the playard floor before using Free Play Mode.

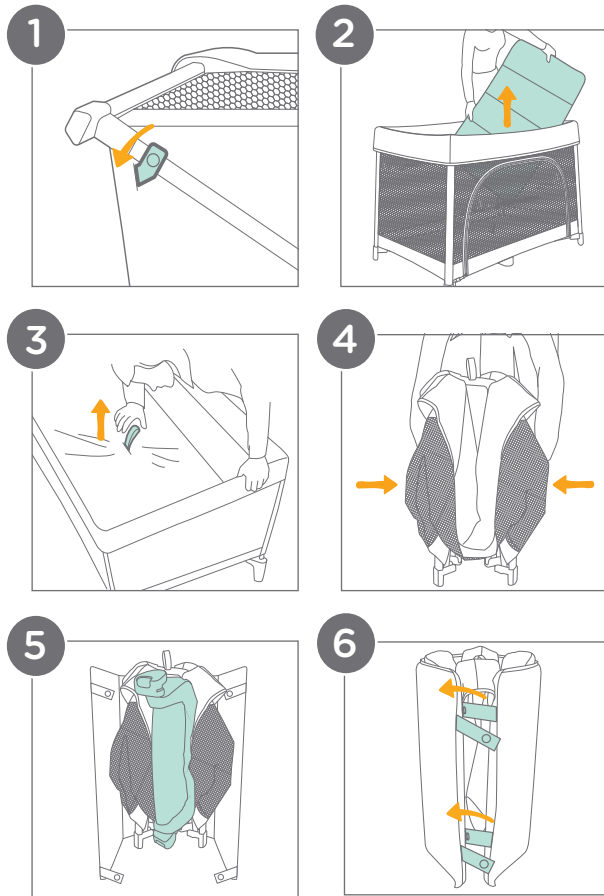


## Folding Playard:

- 1 - Unsnap the mattress straps from the underside of the playard frame in all four corners.
- 2 - Remove the mattress from the playard.
- 3 - Pull the folding webbing upward to release the side rails and bottom hub.
- 4 - Fold the rails towards the center of the playard, but do not force. If the rails have not fully released, continue pulling up on the folding webbing.
- 5 - Wrap the playard with the mattress. To include the changer, fold it by pushing down on both sides, then place it vertically inside the wrapped playard.
- 6 - Attach the mattress straps to the mattress top and bottom snaps to secure the mattress.

**Tip** The playard can be folded with the bassinet attached.

**Tip** Store the instruction manual on the underside of the mattress in the storage pocket.

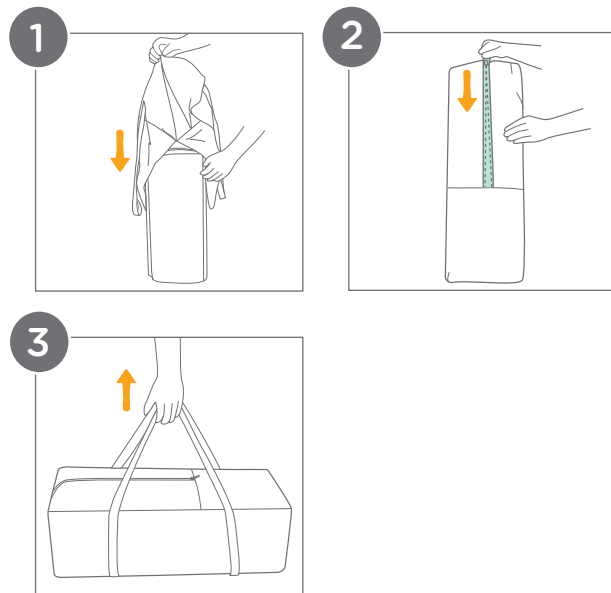


---

## Using Carry Bag:

---

- 1 - Cover the folded playard with the carry bag.
- 2 - Zip up the carry bag.
- 3 - The playard is ready to travel with you!



---

## Care & Maintenance:

---

### Cleaning:

The playard fabric is not removable.

The fabric and mattress can be spot cleaned with a sponge and soapy water.

**Frame:** wipe clean with a solution of warm water and mild household soap. Avoid bleach and harsh detergents.

**DO NOT** fully submerge in water

**Plastic parts:** Periodically wipe clean with a damp cloth.

**Metal parts:** after contact with water, thoroughly dry the metal frame to prevent rust.

To wash the carry bag, machine wash in cold water and drip-dry. **DO NOT** use bleach.

If used at the beach or outdoors, clean sand and dirt off of your playard. Sand or dirt in the top rail locks may cause damage.

---

## Care & Maintenance:

---

### Maintenance:

**Regular inspection:** Check the playard regularly for loose or missing parts. Discontinue use if parts are loose, missing, or broken.

**Worn parts:** Replace any worn or damaged parts. Use only Joie replacement parts.

**Torn material or stitching:** Repair or replace torn fabric or stitching. Use only Joie replacement fabrics.

### Contact Joie Consumer Service at

Email: [info.us@joiebaby.com](mailto:info.us@joiebaby.com) • Phone: 1-866-798-7866

### Storage:

**Extreme weather exposure:** Avoid excessive sun or heat exposure to prevent fading or warping of parts. Avoid storing outside or in cold conditions.

If the playard is not in use for a long period of time, store it where your child cannot access it.



**Effortlessly happy.**

Helping parents be their best  
with worry-free baby gear.